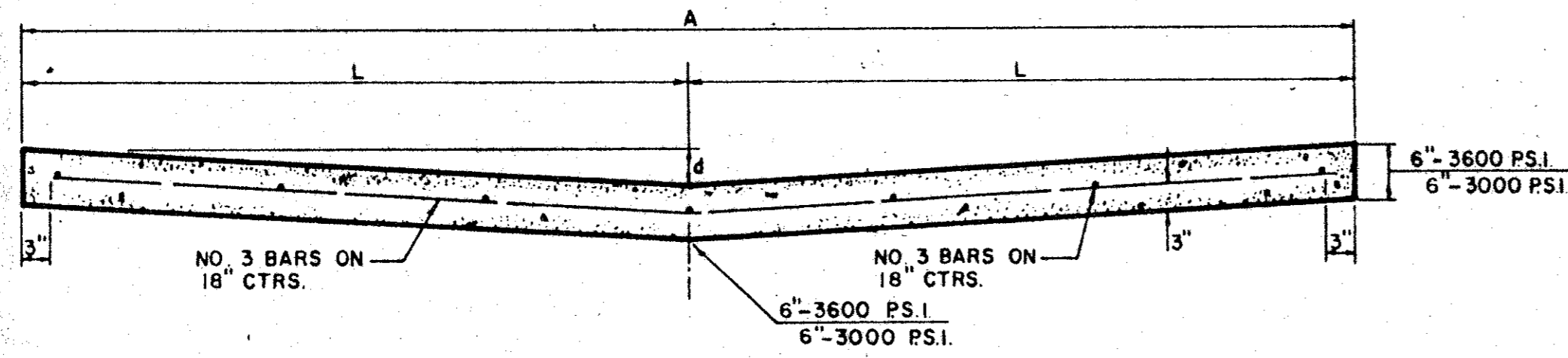
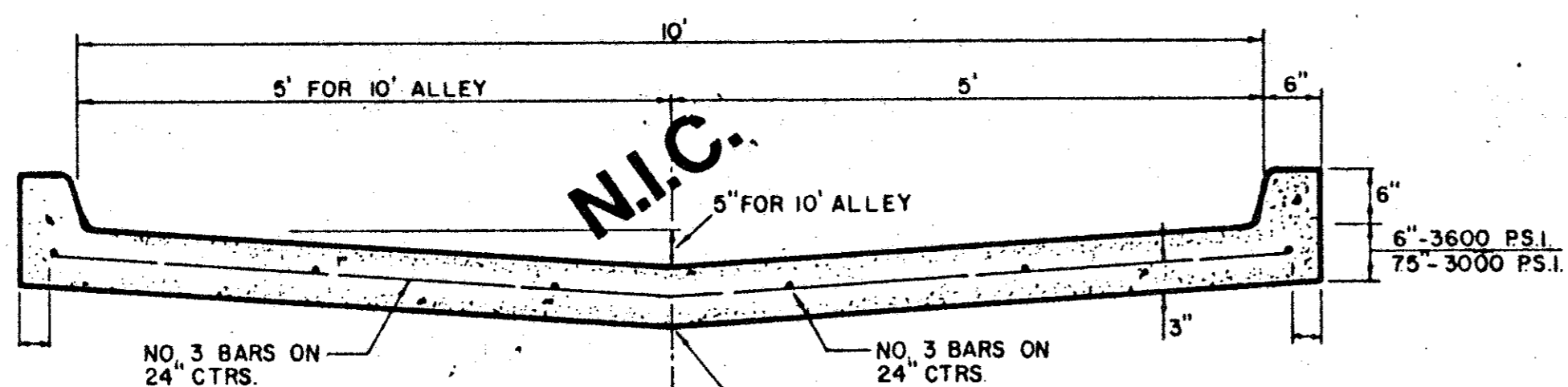


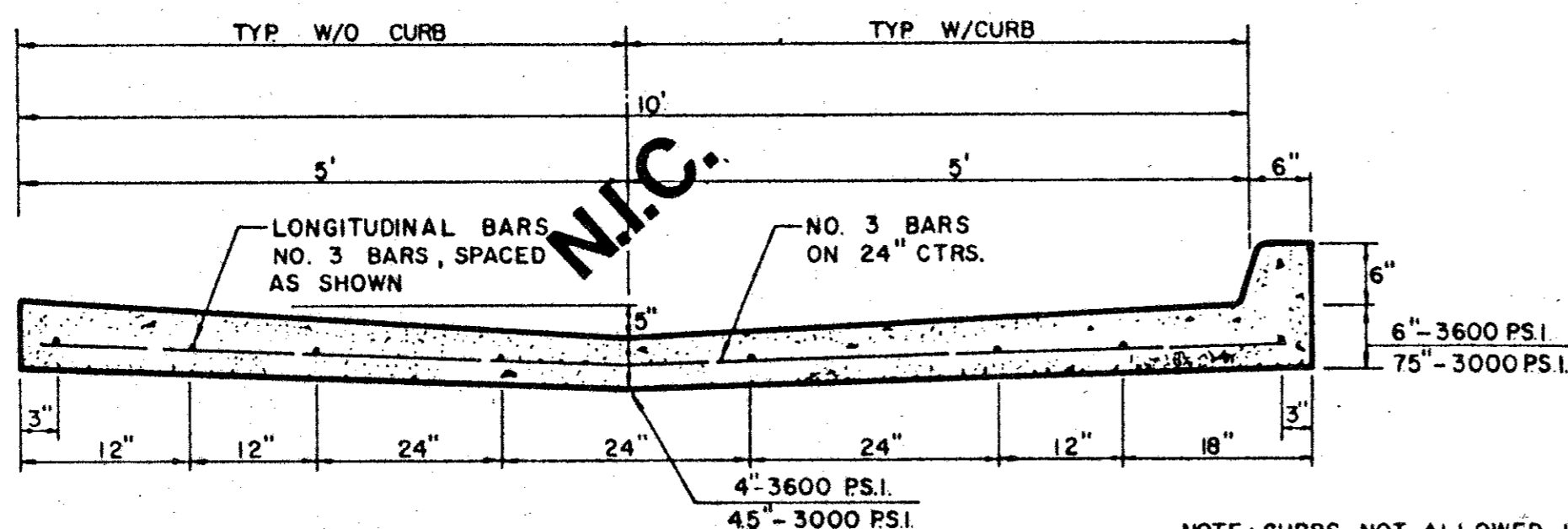
ALLEY WIDTH (A)	HALF SECTION WIDTH (L)	INVERT DEPTH (d)
10'	5'	4"
12'	6'	6"
16'	8'	6"
20'	10'	6"



STANDARD 10', 12', 16', & 20' ALLEY SECTION

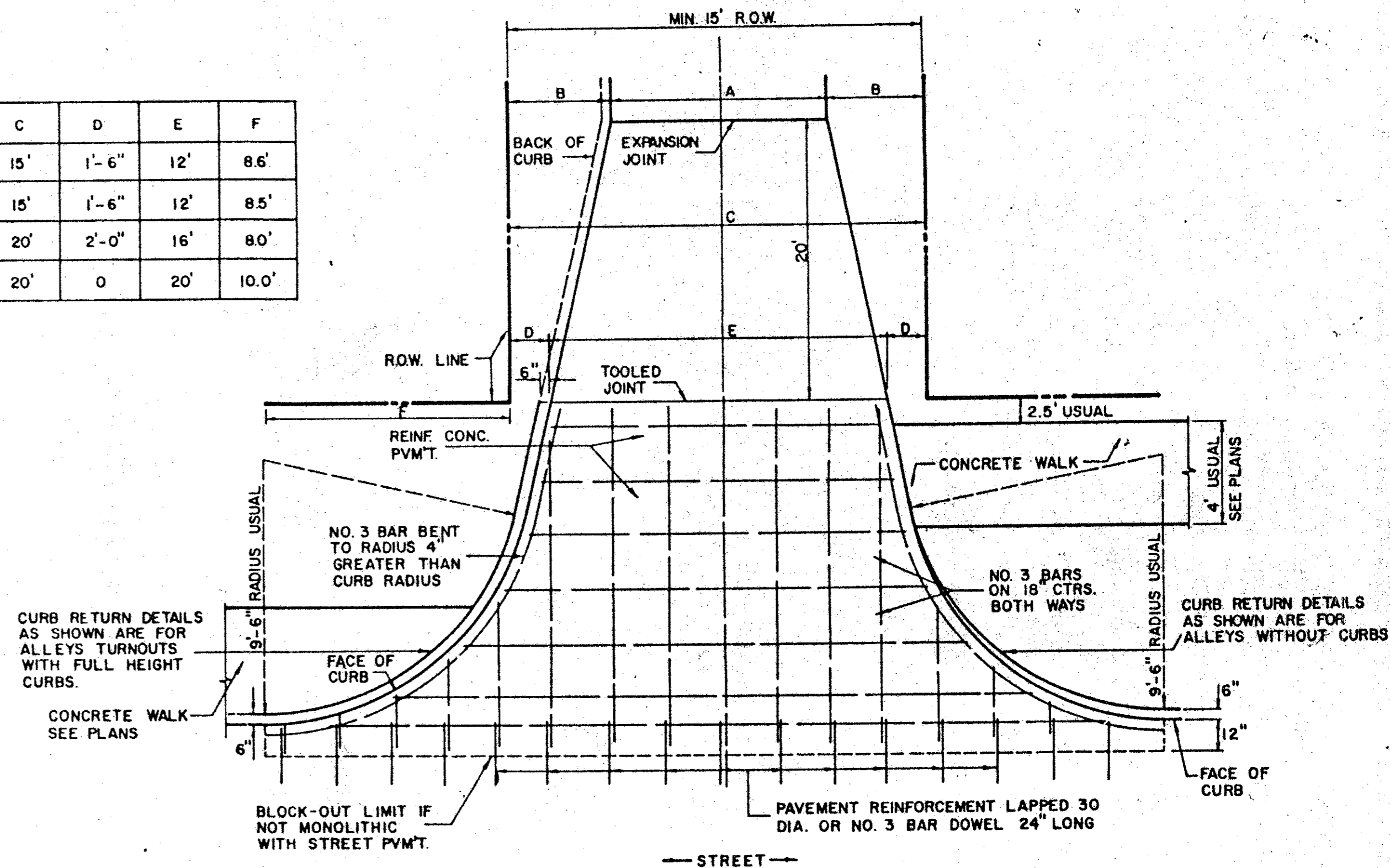


STANDARD ALLEY SECTION WITH CURBS

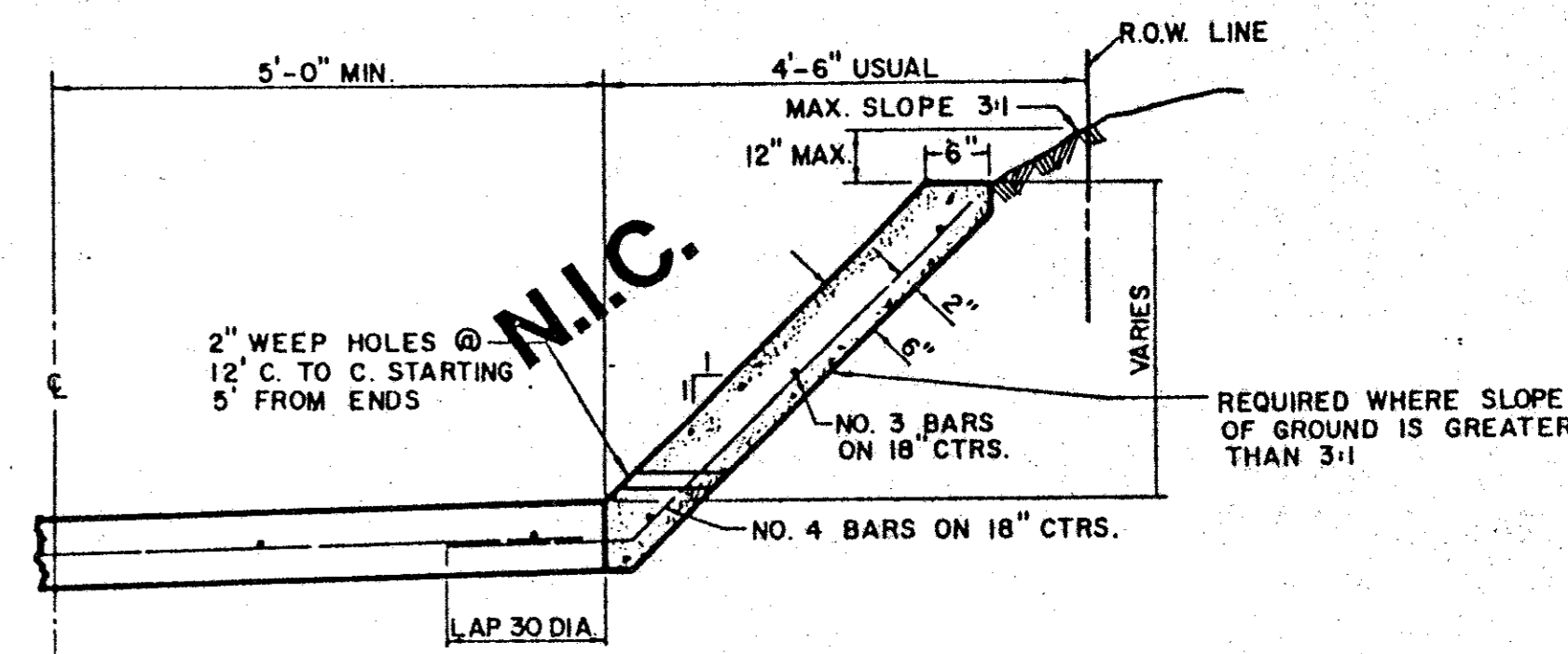


ALTERNATE 10' ALLEY SECTION / CURB

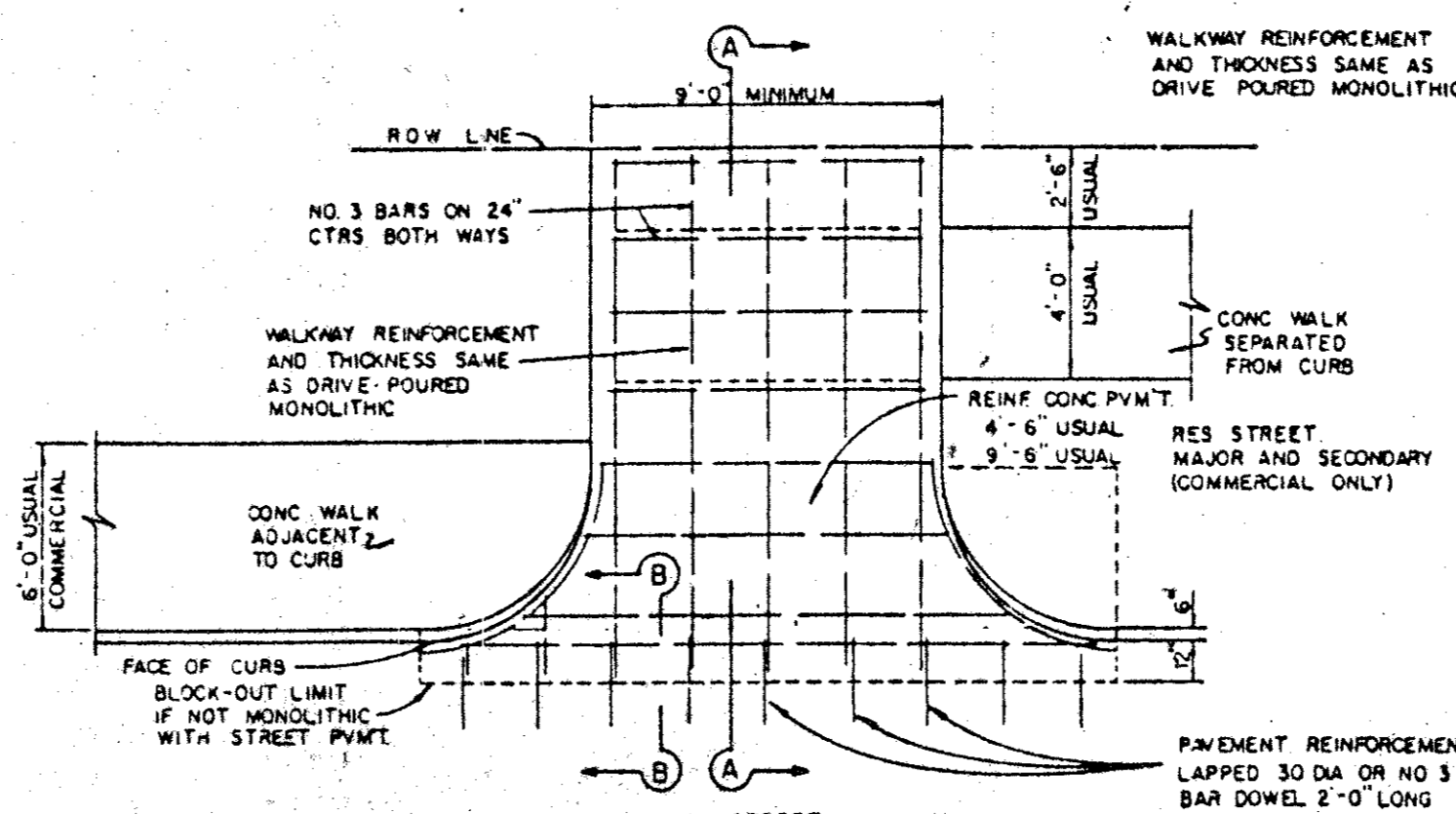
ALLEY WIDTH	A	B	C	D	E	F
10'	10'	2'-6"	15'	1'-6"	12'	8.6'
12'	12'	1'-6"	15'	1'-6"	12'	8.5'
16'	16'	2'-0"	20'	2'-0"	16'	8.0'
20'	20'	0	20'	0	20'	10.0'



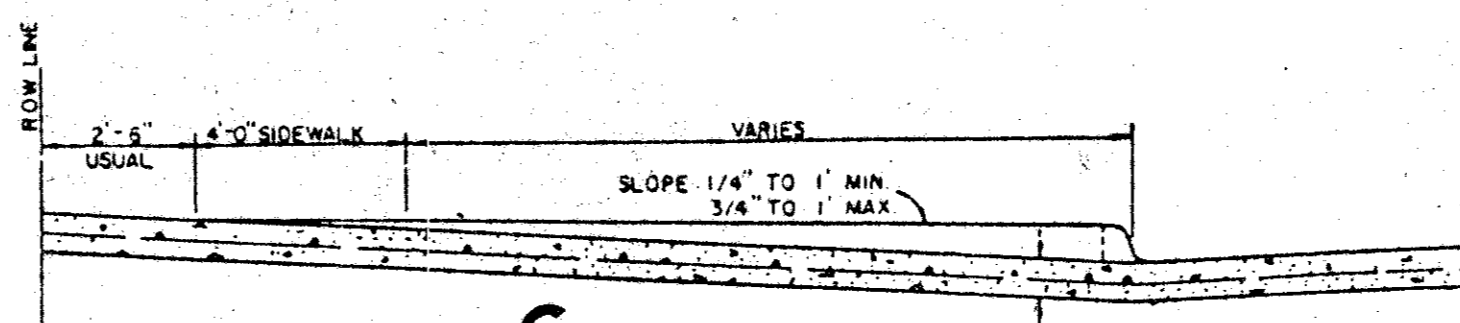
ALLEY RETURN DETAILS
FOR DETAILS ONLY-SEE PLAN FOR DIMENSIONS



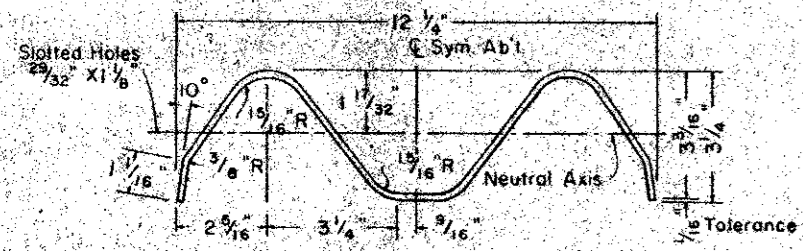
ALLEY SLOPE PROTECTION



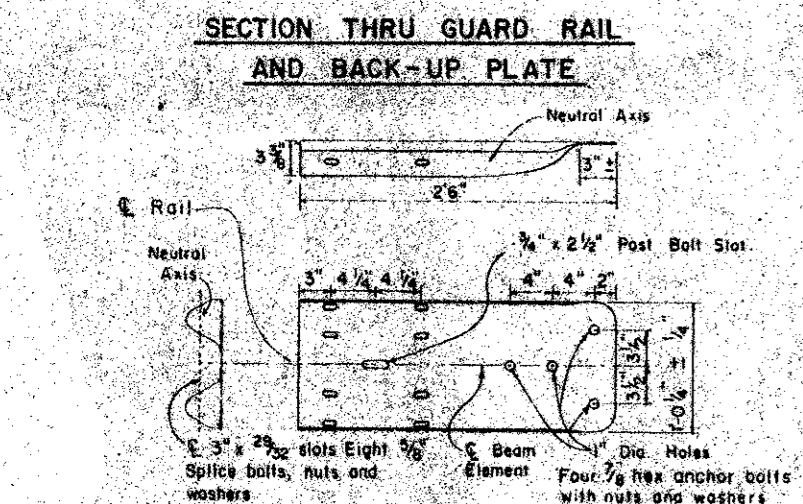
DRIVEWAY RETURN TO STREET



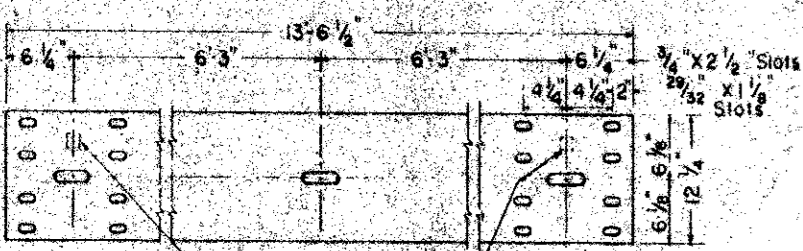
SECTION A-A
SECTION B-B
DRIVEWAY RETURN DETAILS



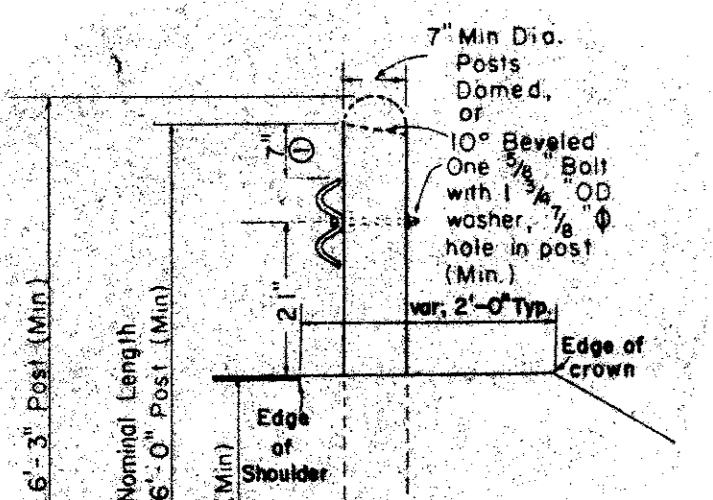
SECTION THRU GUARD RAIL AND BACK-UP PLATE



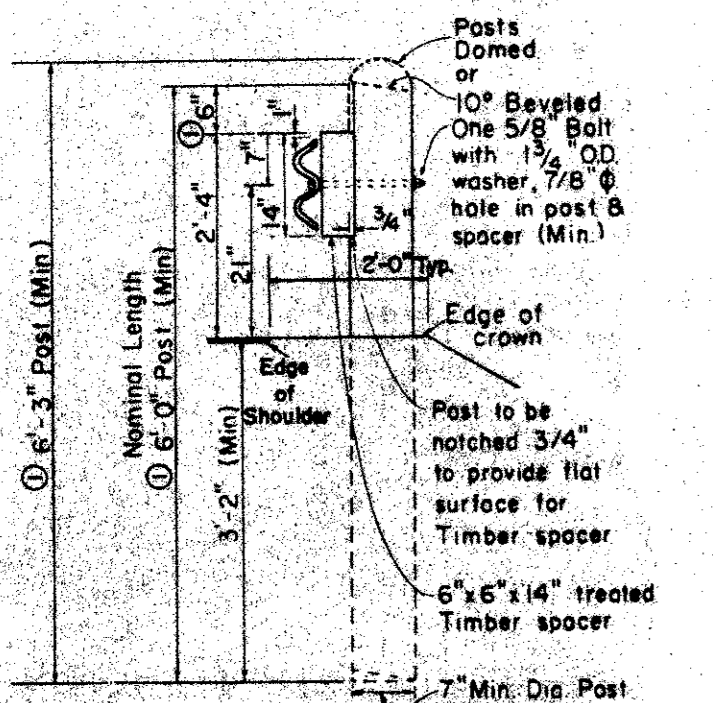
TERMINAL CONNECTOR (10 GAUGE MINIMUM)



ELEVATION OF NOMINAL 12 1/2 FOOT GUARD RAIL (25 Foot sections may also be supplied)

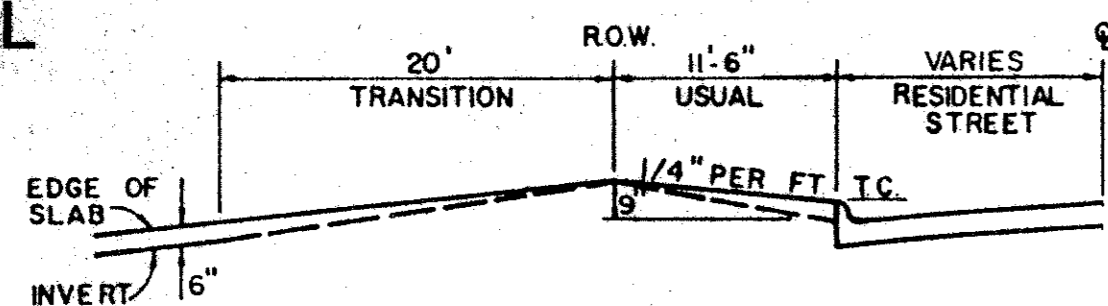


WOOD LINE POST

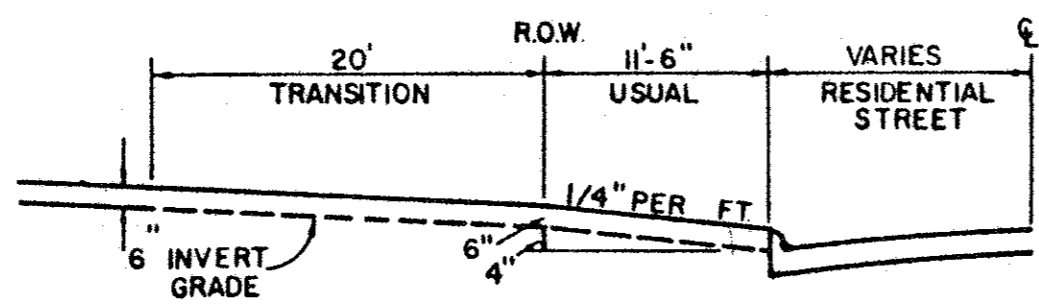


WOOD LINE POST (Blockout)

BARRICADE DETAIL



TYPE I ALLEY ENTRANCE



TYPE II ALLEY ENTRANCE

GENERAL NOTES FOR ALLEYS AND DRIVEWAYS

1. CONCRETE FOR ALLEY RETURNS AND DRIVEWAYS SHALL HAVE A MINIMUM COMPRESSIVE STRENGTH AT 28 DAYS IDENTICAL TO THAT SPECIFIED FOR THE STREET PAVEMENT OR BASE WHEN BUILT AS COMPONENTS OF A CONCRETE PAVING PROJECT. WHEN BUILT SEPARATELY, THE STRENGTH SHALL BE AS SPECIFIED ON THE CONSTRUCTION PLANS.
2. CONCRETE FOR ALLEY PAVEMENT SHALL BE OF THE STRENGTH SPECIFIED ON THE CONSTRUCTION PLANS. (3000 P.S.I. OR 3600 P.S.I. MINIMUM COMPRESSIVE.)
3. SPACING AND CONSTRUCTION OF JOINTS SHALL CONFORM TO STREET PAVEMENT DETAILS.

TOWN OF ADDISON, TEXAS
DEPARTMENT OF ENGINEERING

STANDARD CONSTRUCTION DETAILS
PAVING

ALLEY & DRIVEWAY RETURNS

Designed -	Drawn -	Date - AUGUST, 1991	Job No. -
Approved -	Checked -	Scale -	Sheet JJ-2 OF