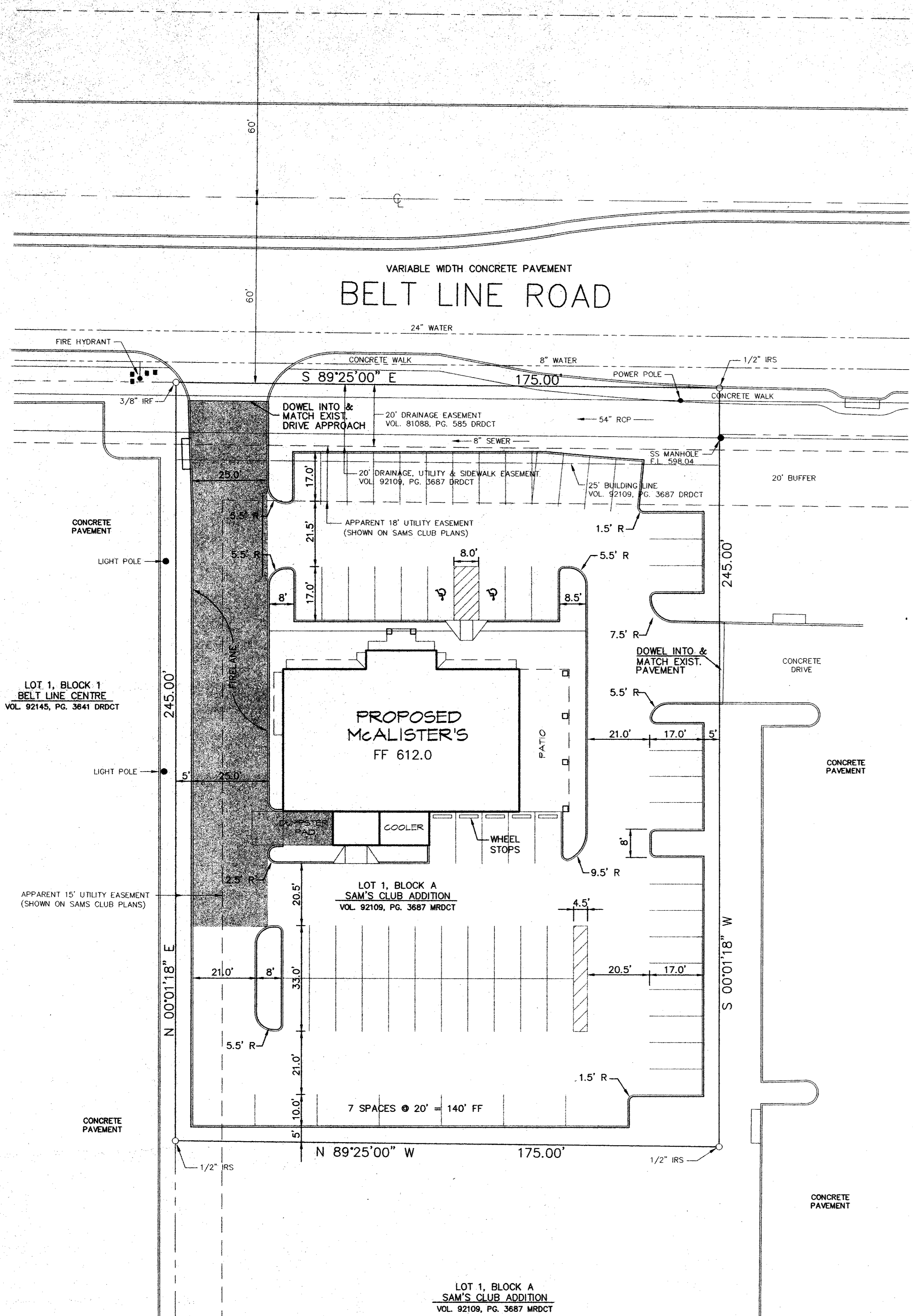
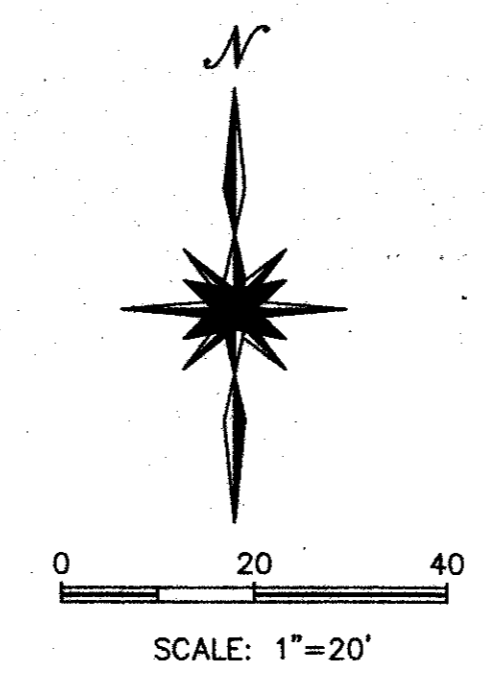


General Notes

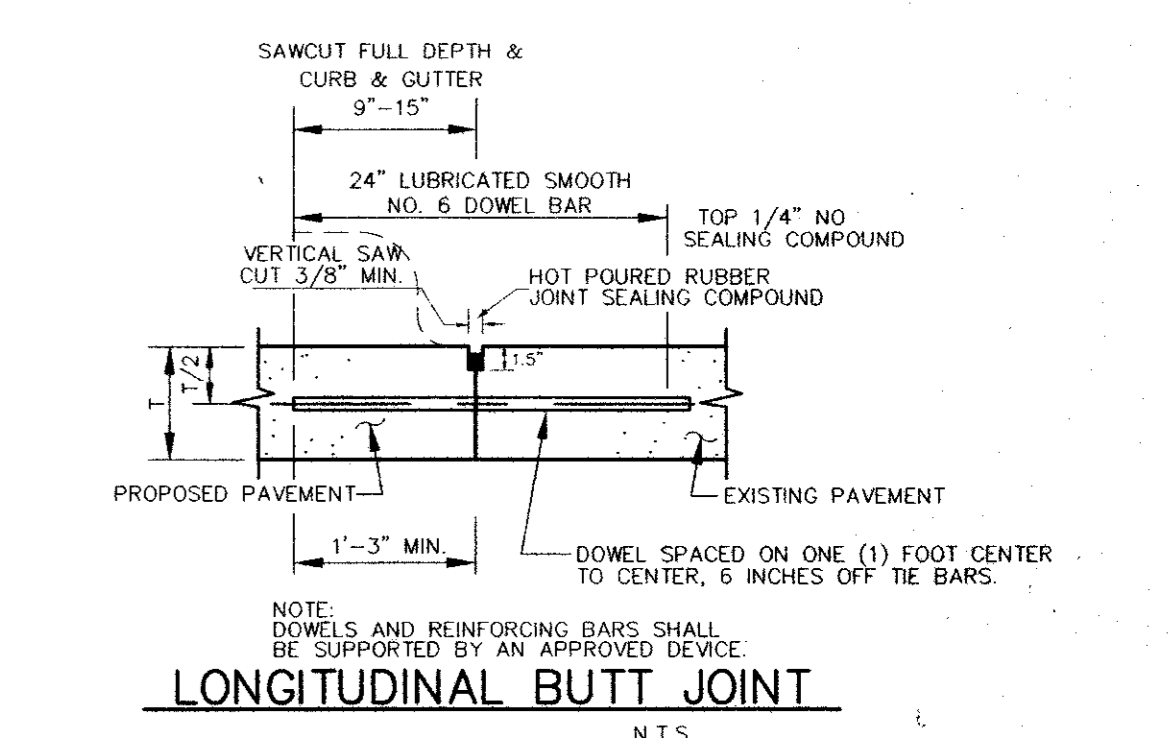
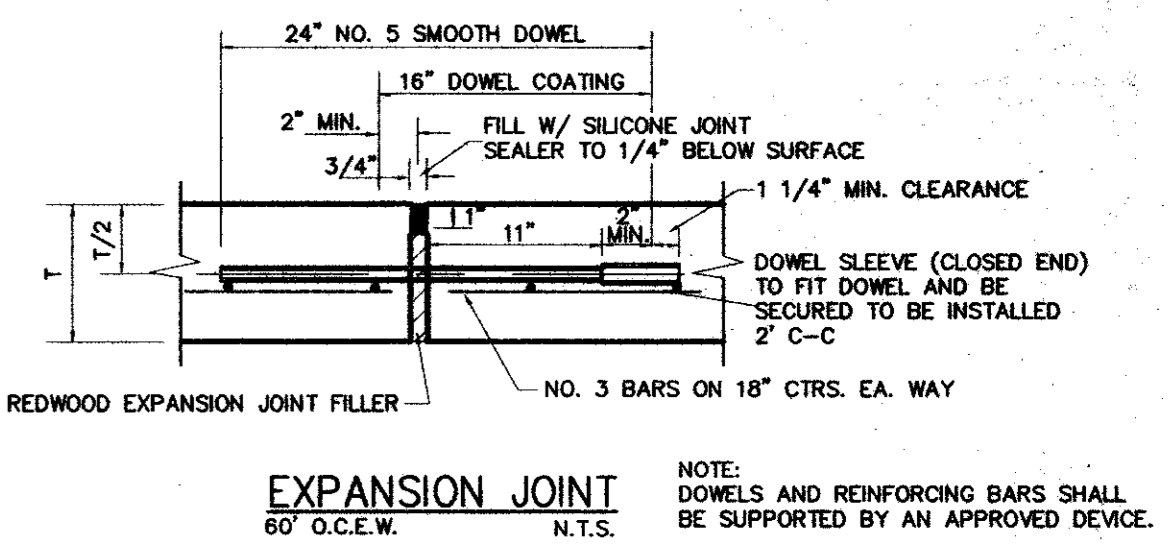
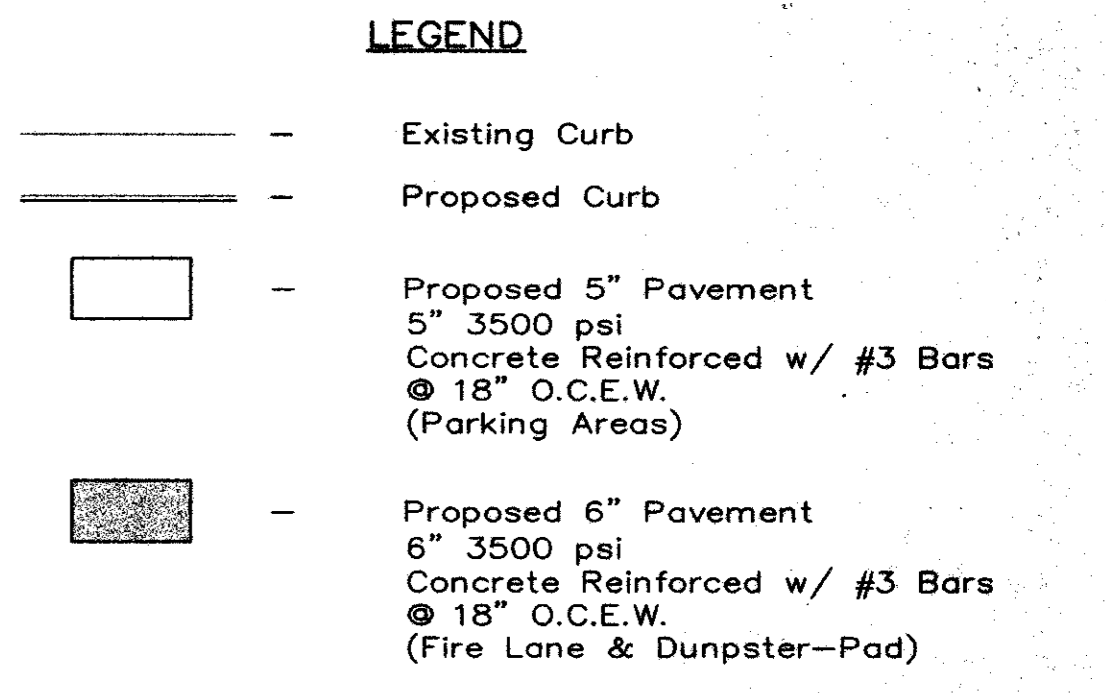
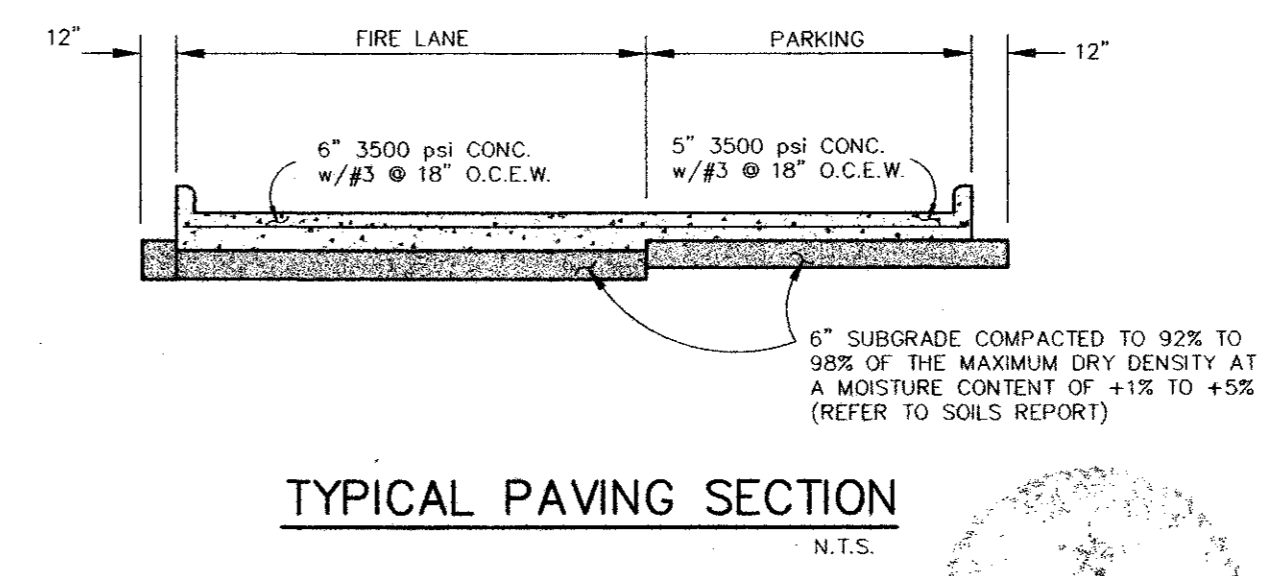
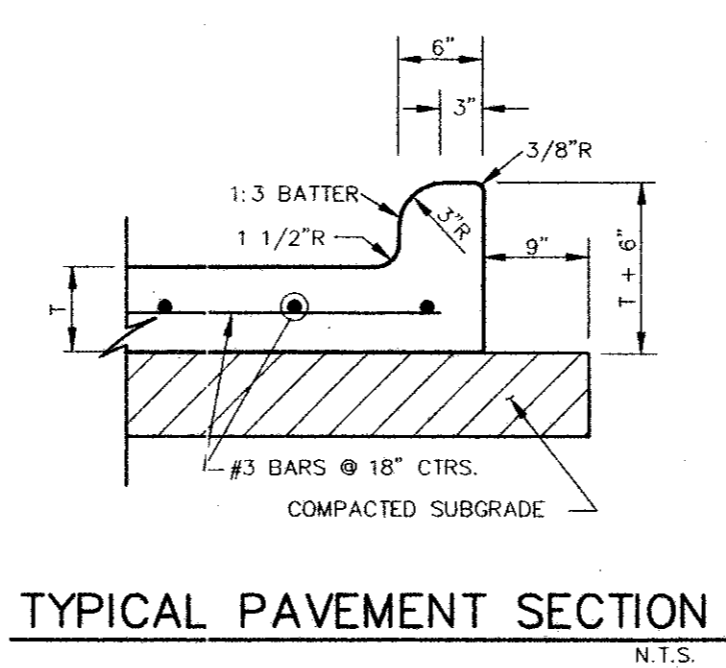
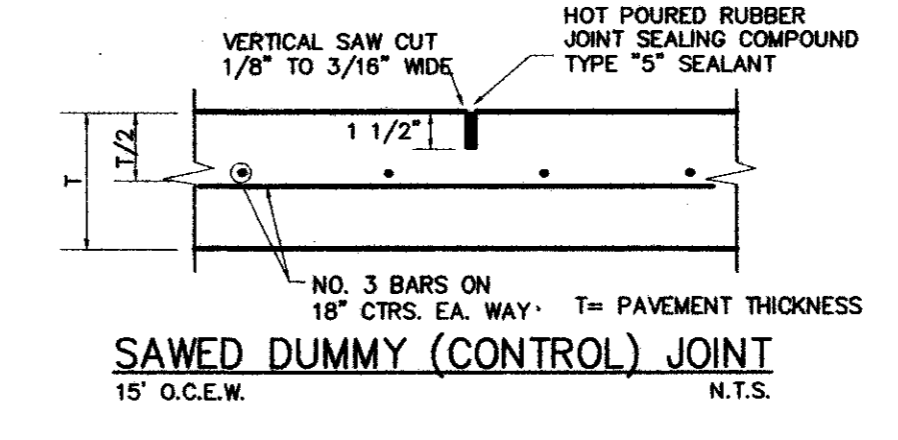
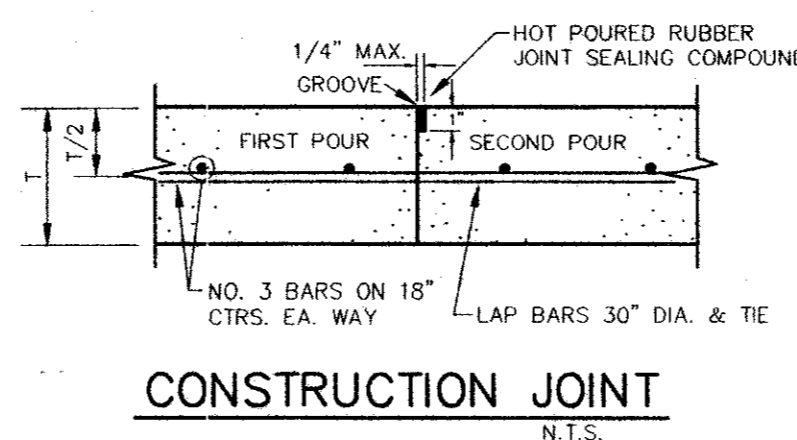
- All materials and construction shall conform to the Town of Addison's standards and specifications.
- It will be the responsibility of the contractor to protect all public utilities in the construction of this project. All manholes, clean-outs, valve boxes, fire hydrants, etc. must be adjusted to proper line and grade by the Contractor prior to and after the placing of permanent paving. Utilities must be maintained to proper line and grade during construction of this project.
- The Contractor will be responsible for coordinating with all the appropriate utility companies for the location of all utilities within the construction area.
- The Paving Contractor shall coordinate with the Utility Contractor to insure all sleeving for irrigation has been installed prior to placement of permanent pavement.
- All paving and earthwork operations shall conform to the recommendations in the Geotechnical Investigation Report.
- All dimensions are to back of curb unless otherwise noted.
- All curb return radii are 1.5' unless otherwise noted.
- All construction debris shall be legally disposed of offsite.
- All parking spaces are 8.5'x 17' unless otherwise noted.



SITE DATA

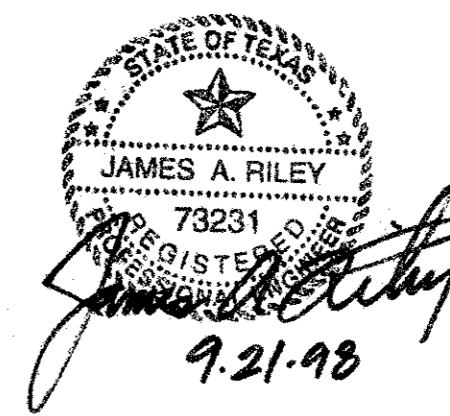
LOT AREA = 42,875 sq. ft.
 BUILDING SQ. FOOTAGE = 4,636 sq. ft. (INCLUDES PATIO)
 PARKING PROVIDED = 58 + 7 PARALLEL + 2 HANDICAP = 67 SPACES
 PARKING REQUIRED = 1 SPACE/70 sq. ft. OF BLDG. AREA
 = 4636/70 = 67 SPACES

**LOT 4
 BLOCK A**
 42,873 SQUARE FEET
 0.9842 ACRES



- NOTES:**
- No. 5 smooth dowel bar may be used in 5 inch and 6 inch pavement thickness.
 - Longitudinal butt construction may be utilized in place of longitudinal hinged (keyway) joint at contractor's option.
 - Dowel bars shall be drilled into pavement horizontally by use of a mechanical rig.
 - Drilled by hand is not acceptable. Pushing dowel bars into green concrete not acceptable.

BENCH MARK: SQUARE CUT ON INLET AT THE SOUTHEAST CORNER OF BELT LINE ROAD AND SURVEYOR ROAD.
 ELEVATION 594.94



PAVING PLAN

McAlister's Gourmet Deli
 TOWN OF ADDISON
 DALLAS COUNTY, TEXAS

BROCKETTE • DAVIS • DRAKE, inc.
 consulting engineers

Civil & Structural Engineering • Surveying
 4144 North Central Expressway, Suite 1100 Dallas, Texas 75204
 (214)824-3647, fax (214) 824-7064

DESIGN	DRAWN	DATE	SCALE	NOTES	FILE	NO.
JAR	WHB	9/98	1"=20'	BDD	C98349	C-3