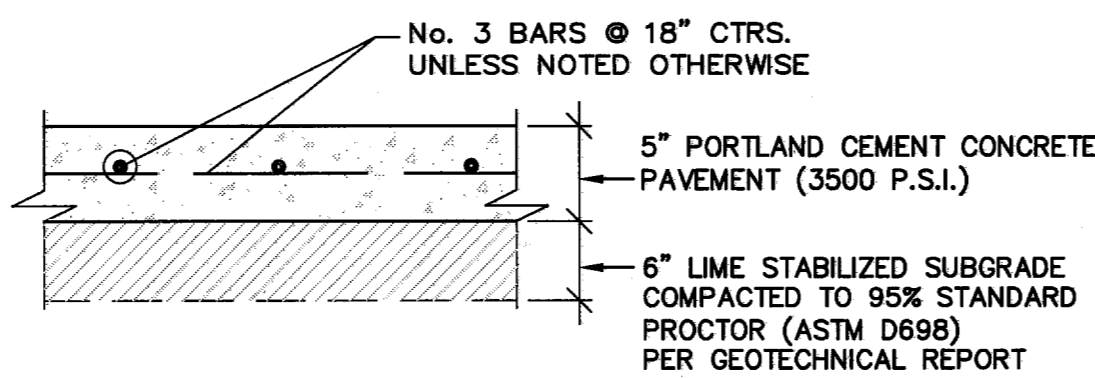
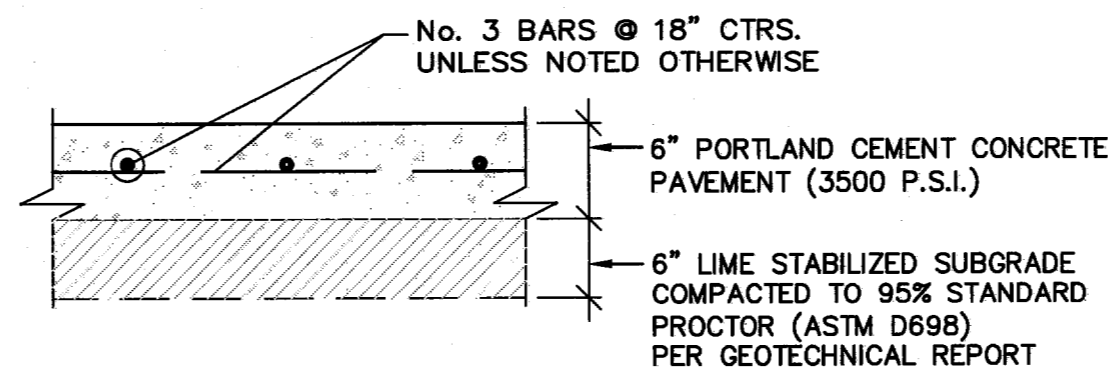


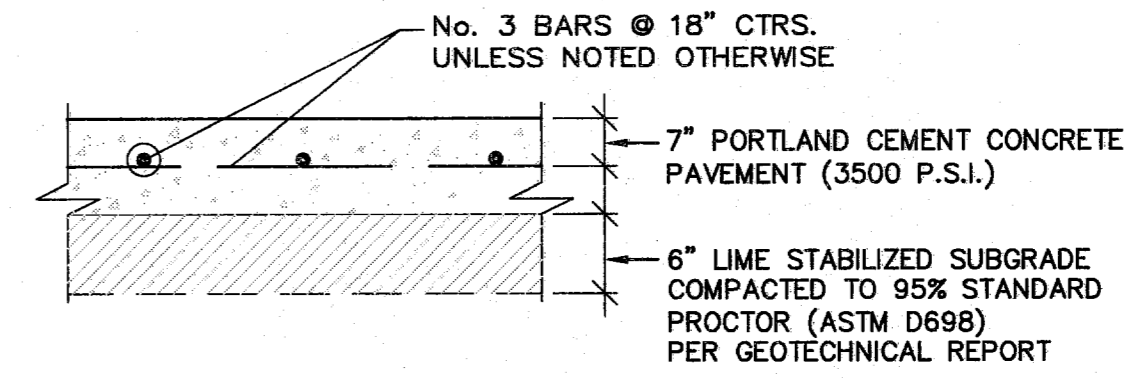
1 MONOLITHIC CONCRETE CURB
N.T.S.



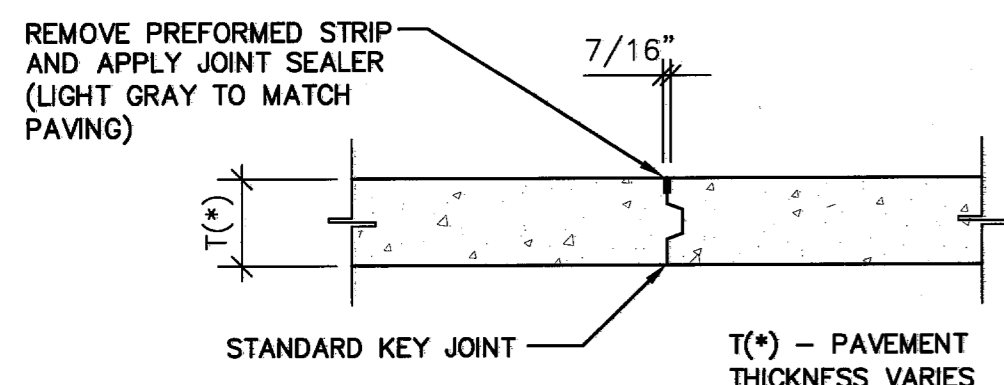
2 LIGHT DUTY PAVING SECTION
N.T.S.



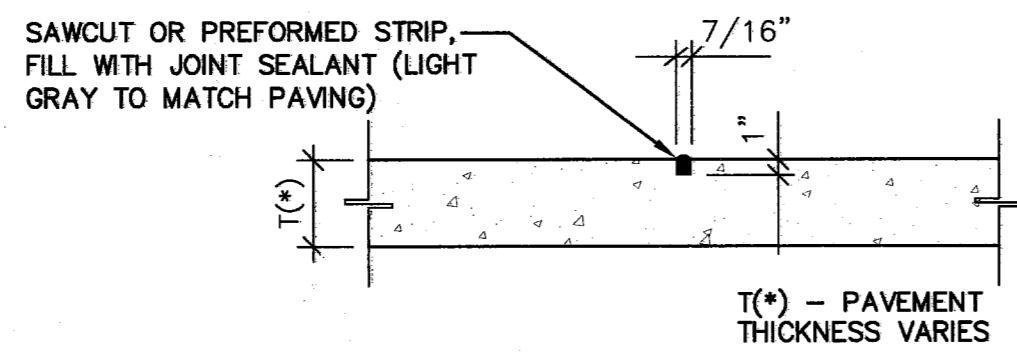
3 MEDIUM DUTY PAVING SECTION
N.T.S.



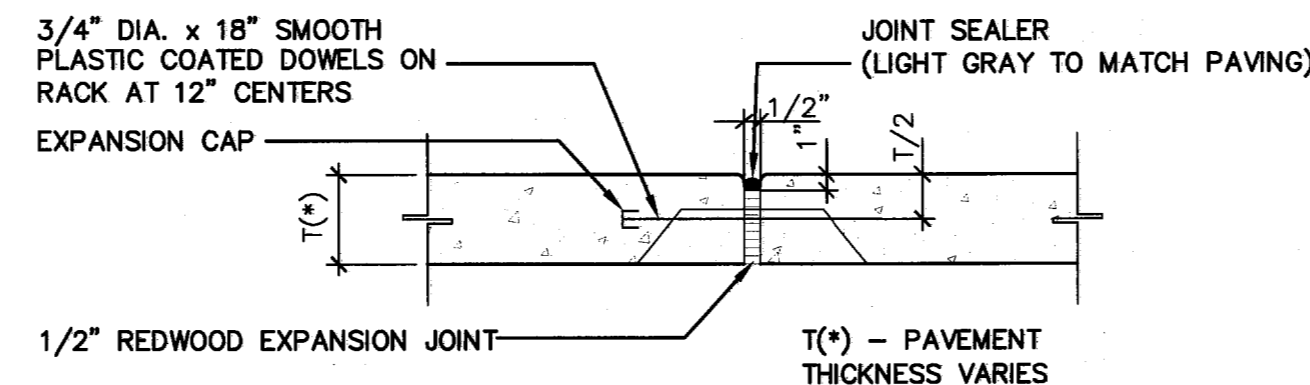
4 HEAVY DUTY PAVING SECTION
N.T.S.



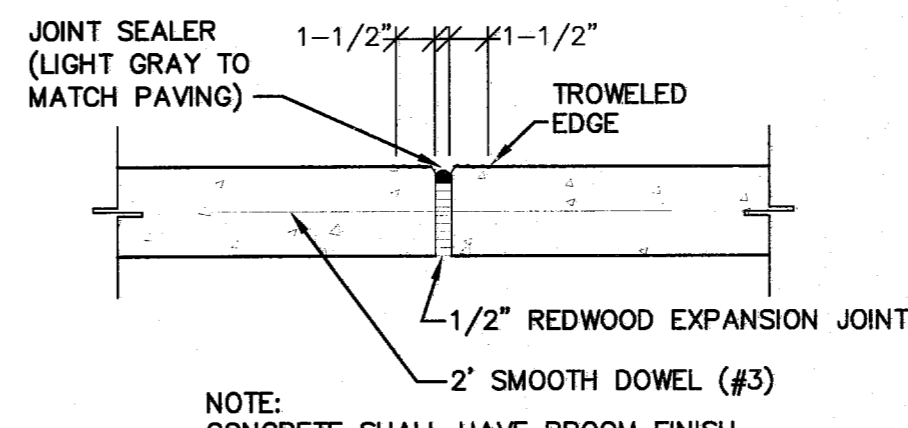
5 LONGITUDINAL (KEY) JOINT
N.T.S.



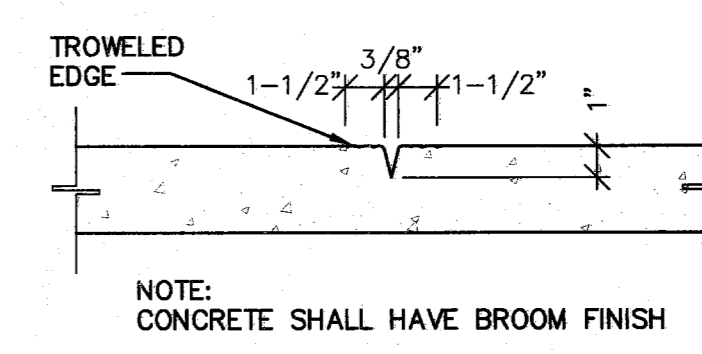
6 CONTRACTION JOINT
N.T.S.



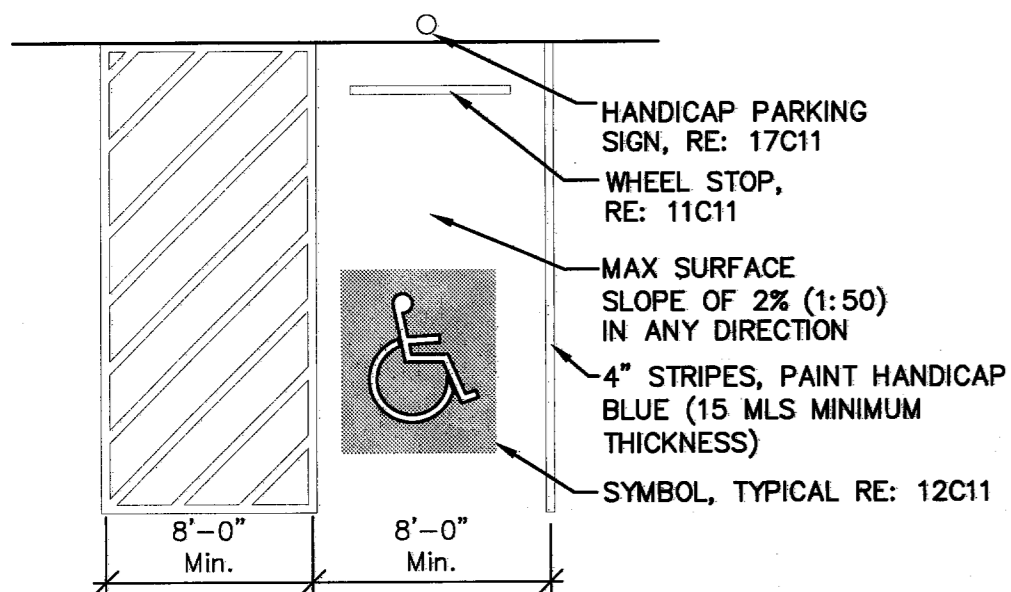
7 EXPANSION JOINT
N.T.S.



8 SIDEWALK EXPANSION JOINT
N.T.S.

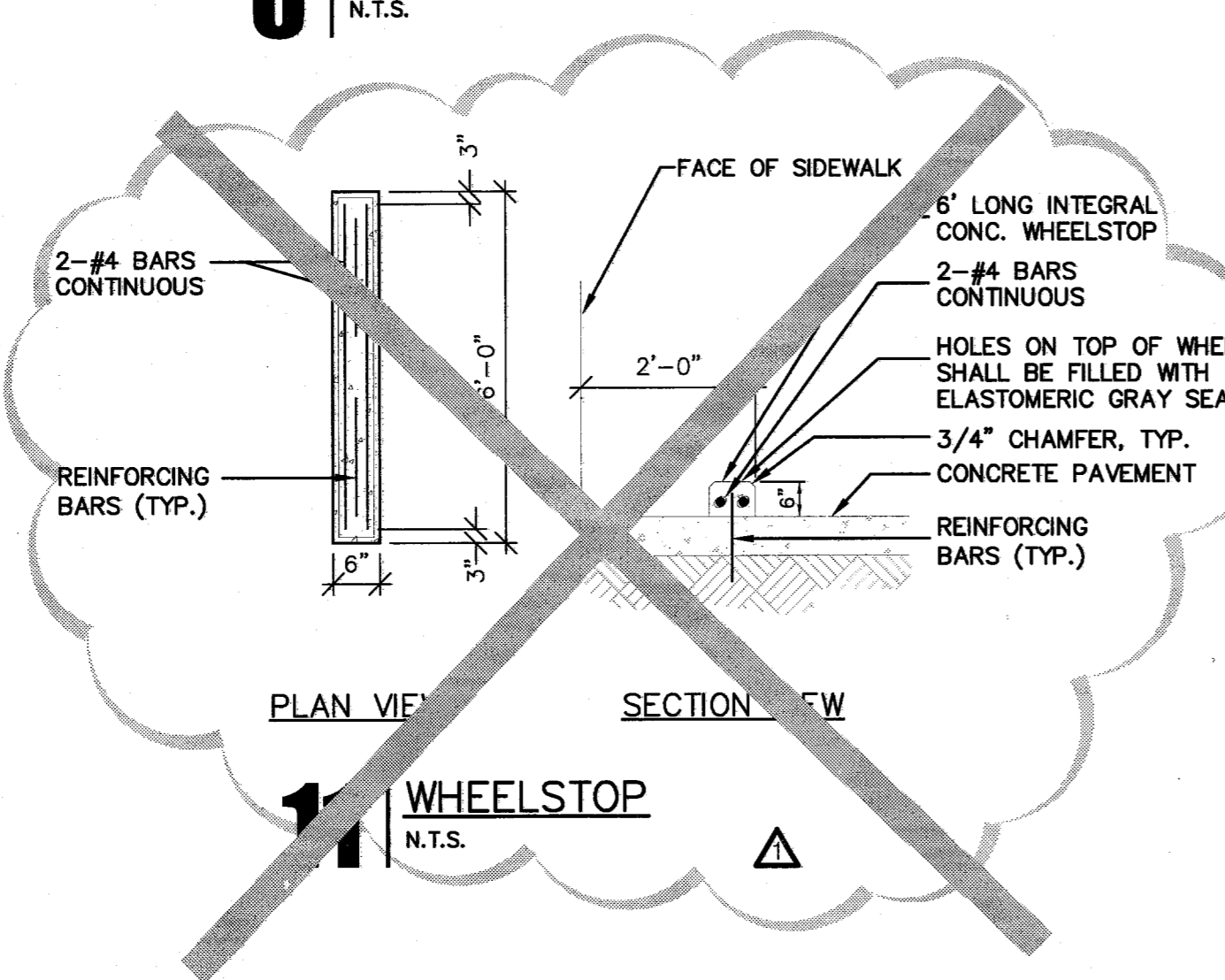


9 SIDEWALK TOOL JOINT
N.T.S.

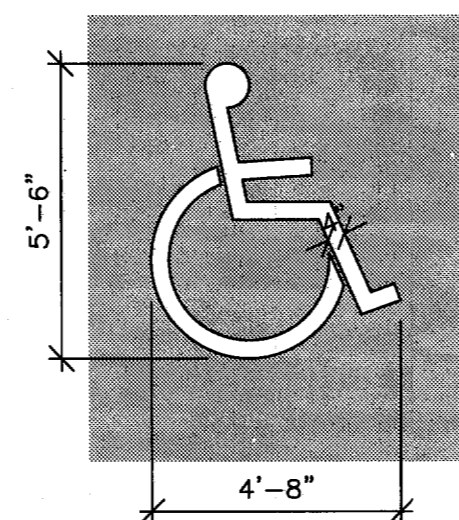


NOTE:
PAINT SYMBOL ONTO PAVED SURFACE WITH TWO (2) COATS OF HANDICAP BLUE PAINT. MANUFACTURE AS PER DEPARTMENT OF TRANSPORTATION SPECIFICATIONS.

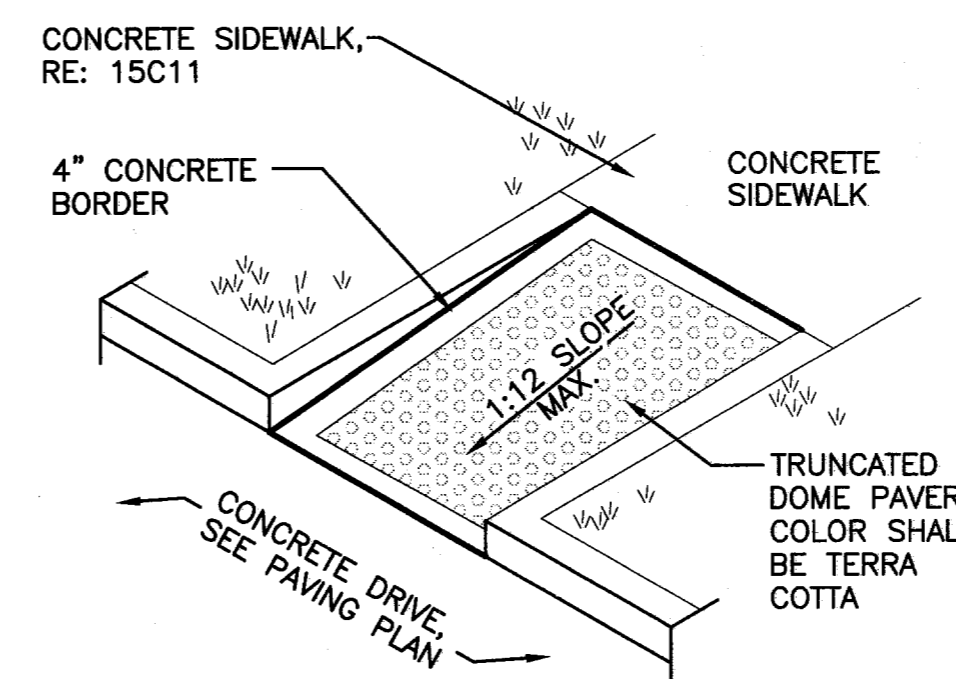
10 HANDICAP PARKING LAYOUT
N.T.S.



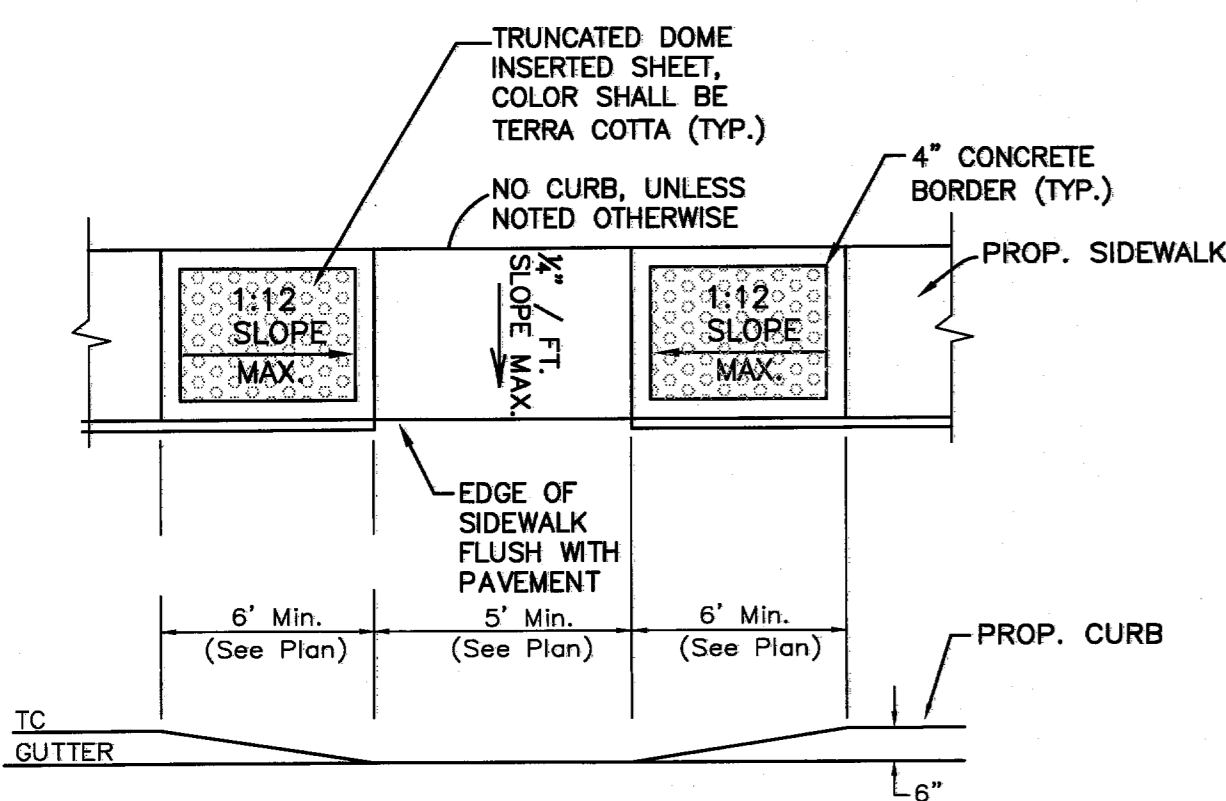
11 WHEELSTOP
N.T.S.



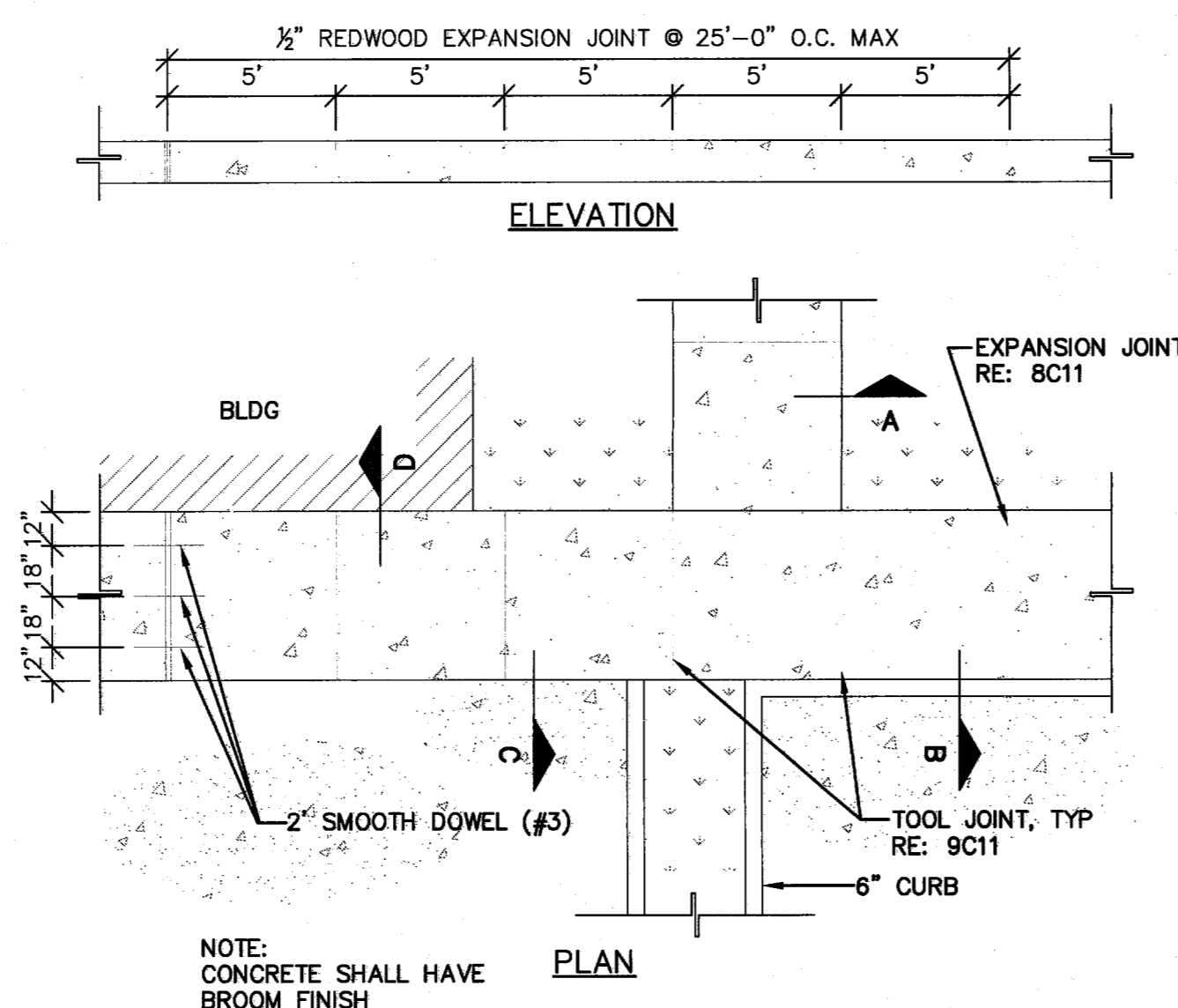
12 HANDICAP PARKING SYMBOL
N.T.S.



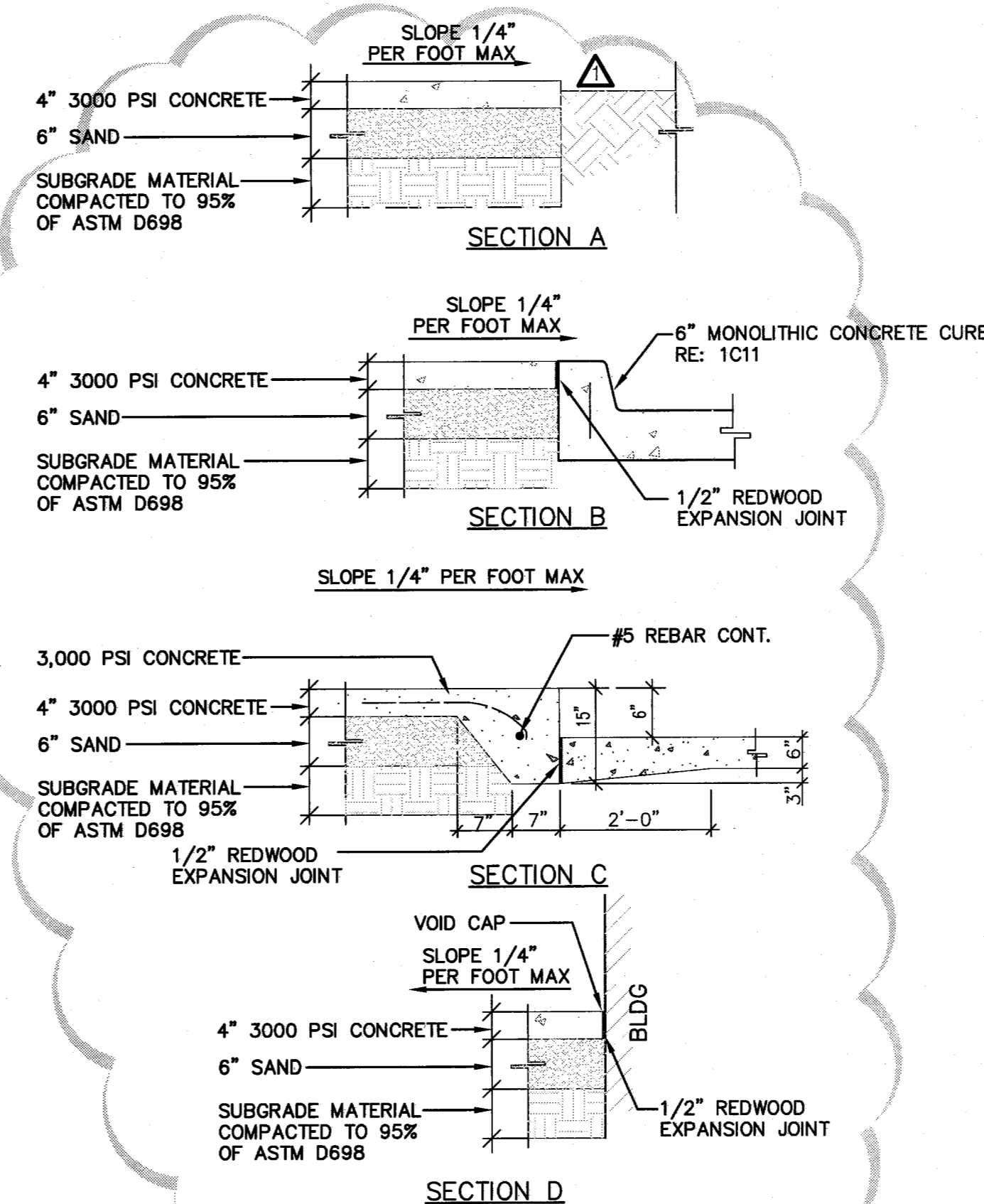
13 RAMP
N.T.S.



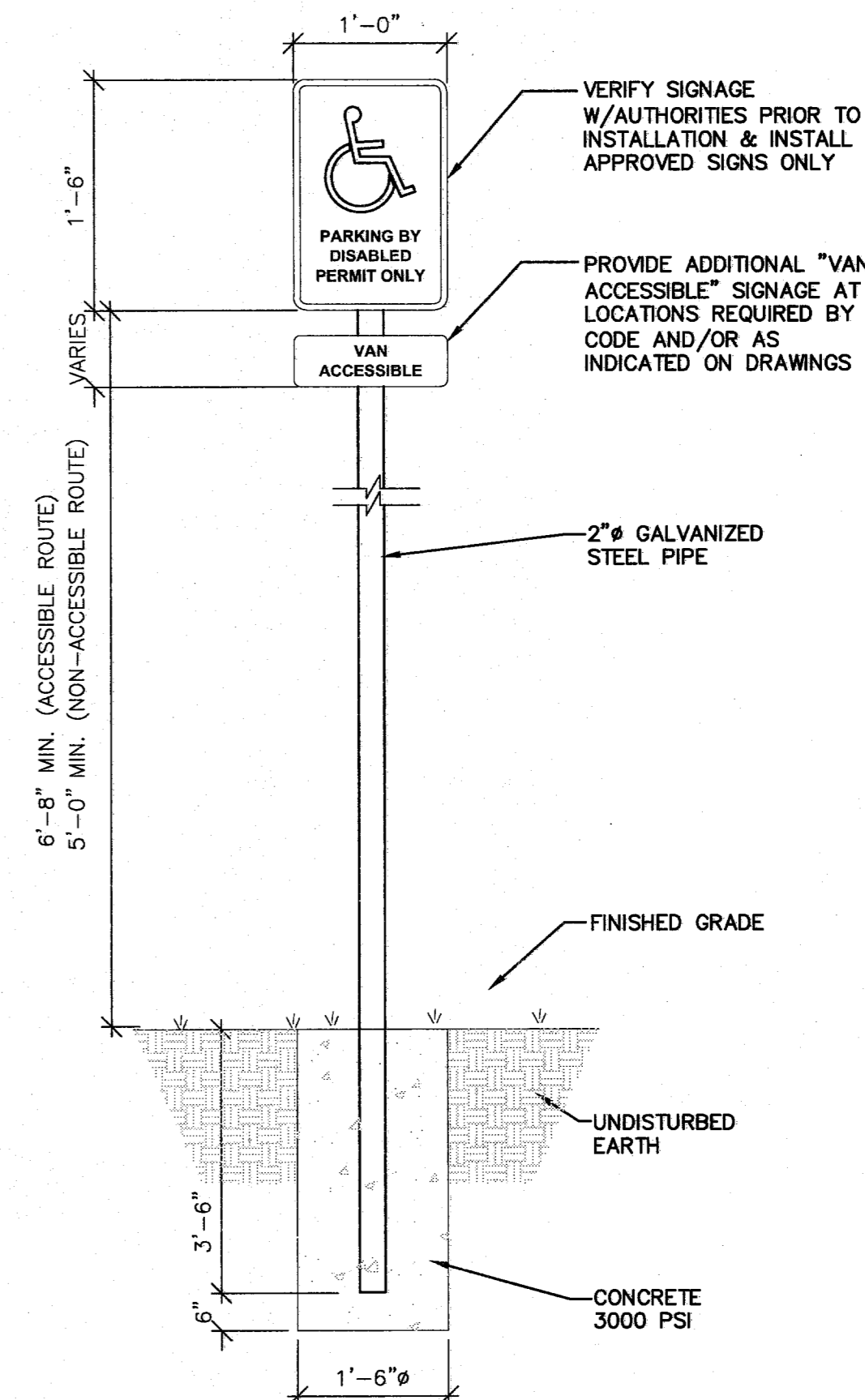
14 HANDICAP RAMP
N.T.S.



15 CONCRETE SIDEWALK
N.T.S.



16 SIDEWALK SECTIONS
N.T.S.



NOTES:
1. ALL SIGNS SHOWN SHALL CONFORM TO THE MANUAL FOR UNIFORM TRAFFIC CONTROL DEVICES.
2. ALL SIGNS SHOWN SHALL BE REFLECTORIZED TO SHOW THE SAME COLOR BY NIGHT AS BY DAY.
3. ALL SIGNS SHALL BE SECURELY MOUNTED ON GALVANIZED STEEL POSTS.
4. INSTALL QUANTITY AND AT LOCATIONS REQUIRED BY CODE AND/OR AS INDICATED ON DRAWINGS. CONFIRM ALL HANDICAPPED SIGNAGE CODES.

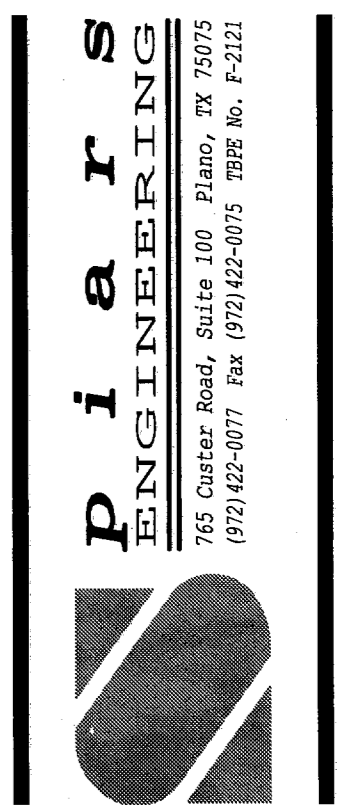
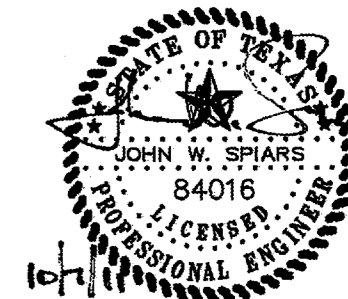
17 HANDICAP PARKING SIGN
N.T.S.



Restaurant Support Office
5800 TENNISON PARKWAY, SUITE 200
Tel: 972.769.9337 Fax: 972.769.3101

Store:
Raising Cane's
Store # 98
Belt Line Road
Addison, TX 75001
Prototype 2

Professional of Record:



Architect Information:



CSRS, Inc.
6767 Perkins Road Suite 200 Baton Rouge, LA 70808
Tel: 225.769-0546 Fax: 225.767-0060
www.csronline.com

Prototype Issue Date: August 1, 2010

Design Bulletin Updates:

Date Issued: Bulletin Number:

FOR CONSTRUCTION

Revisions:

#	Date	Description
1	10-07-2011	PERMIT/OWNER REVIEW

Sheet Title:

SITE DETAILS
(PRIVATE)

Date: October 07, 2011

Project Number: SEI No. 11-101

Drawn By: MPC

Sheet Number:

C11