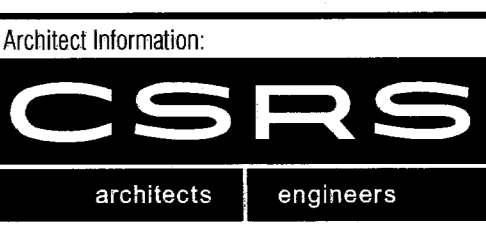
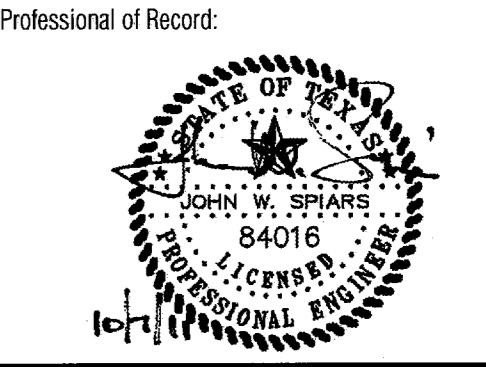




Restaurant Support Office  
5800 TENNYSON PARKWAY, SUITE 200  
Ft. Worth, TX 76105  
Tel: 972.769.3337 Fax: 972.769.3101

Store:  
**Raising Cane's  
Store # 98**  
Belt Line Road  
Addison, TX 75001  
Prototype 2



CSRS, Inc.  
6767 Perkins Road Suite 200 Balcon Rouge, LA 70088  
Tel: 225 769-0546 Fax: 225 767-0060  
www.csrsinc.com

Prototype Issue Date: August 1, 2010

Design Bulletin Updates:

Date Issued:	Bulletin Number:
-	-

**FOR CONSTRUCTION**

Revisions:

#	Date	Description
1	10-07-2011	PERMIT/OWNER REVIEW

Sheet Title:

**STRIPING AND SIGNAGE PLAN**

Date: October 07, 2011

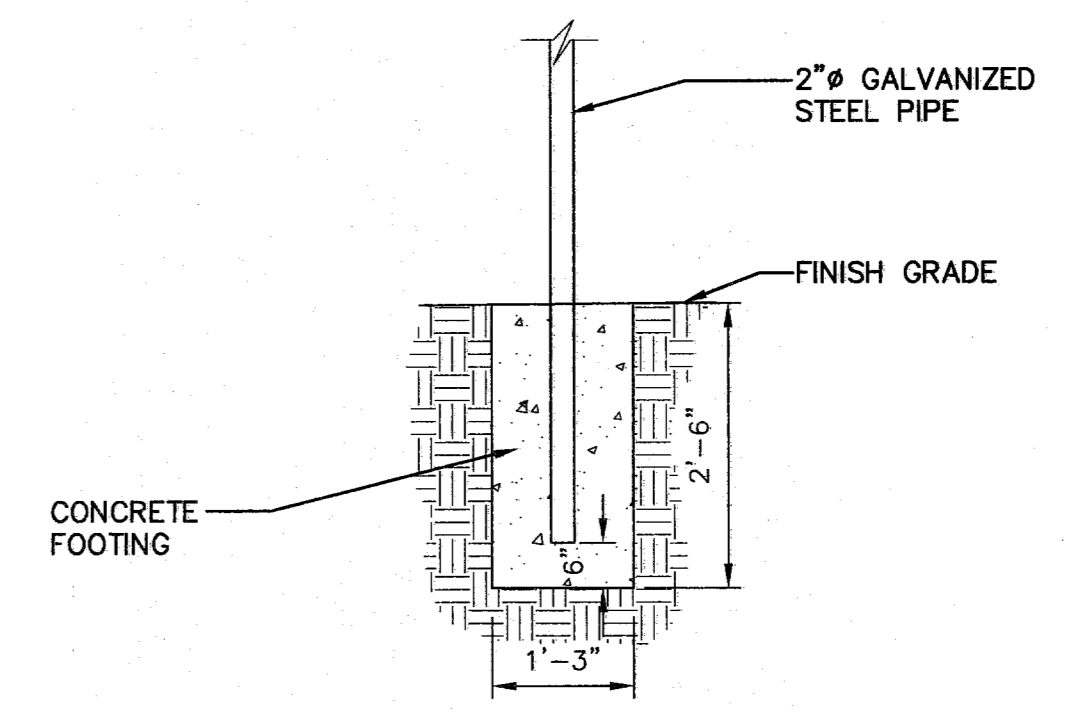
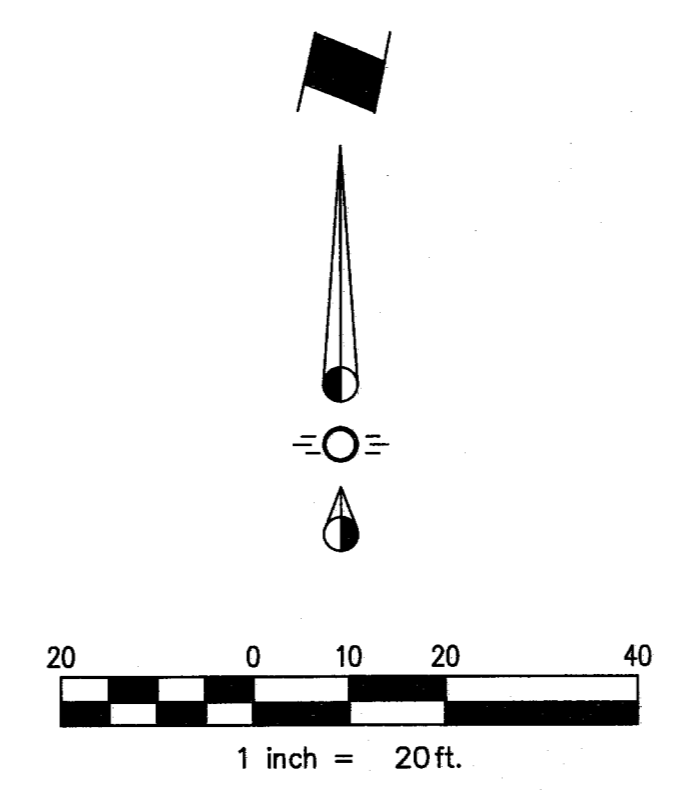
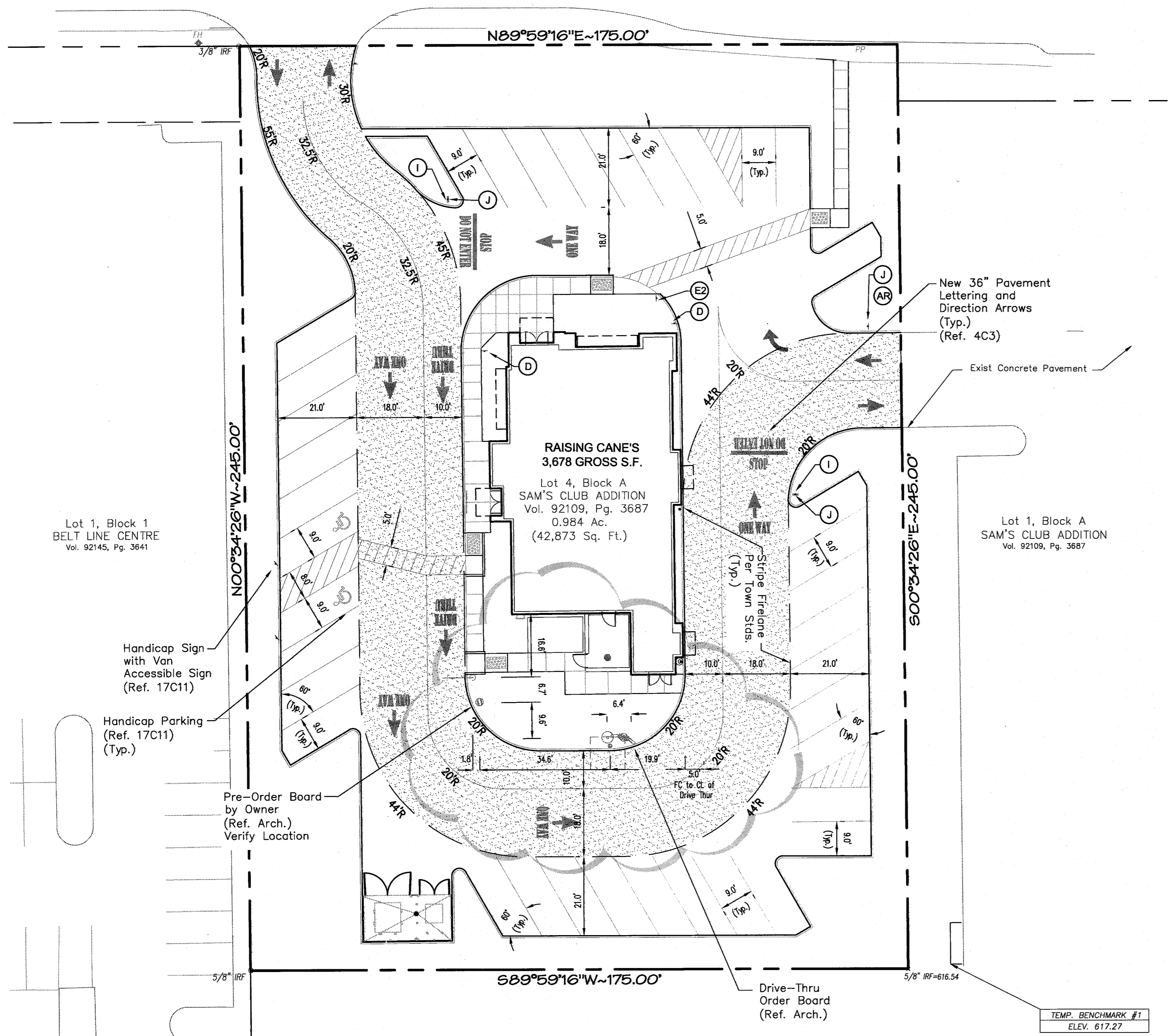
Project Number: SEI No. 11-101

Drawn By: MPC

Sheet Number:

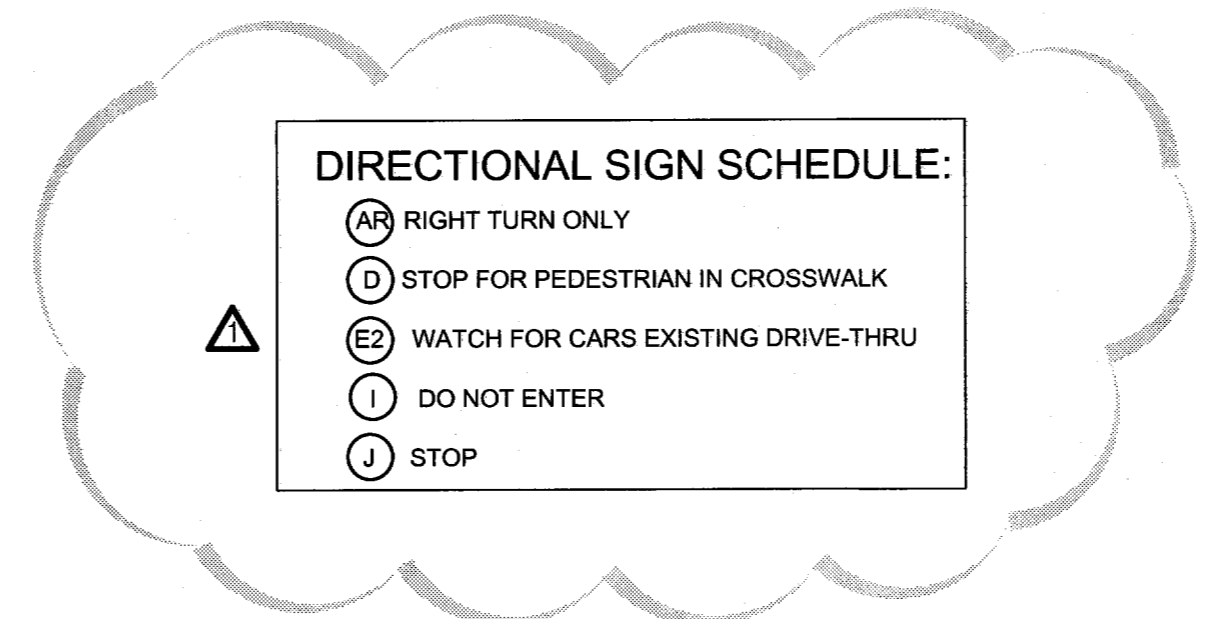
**C3**

**BELT LINE ROAD**  
(A called 120' RIGHT-OF-WAY)



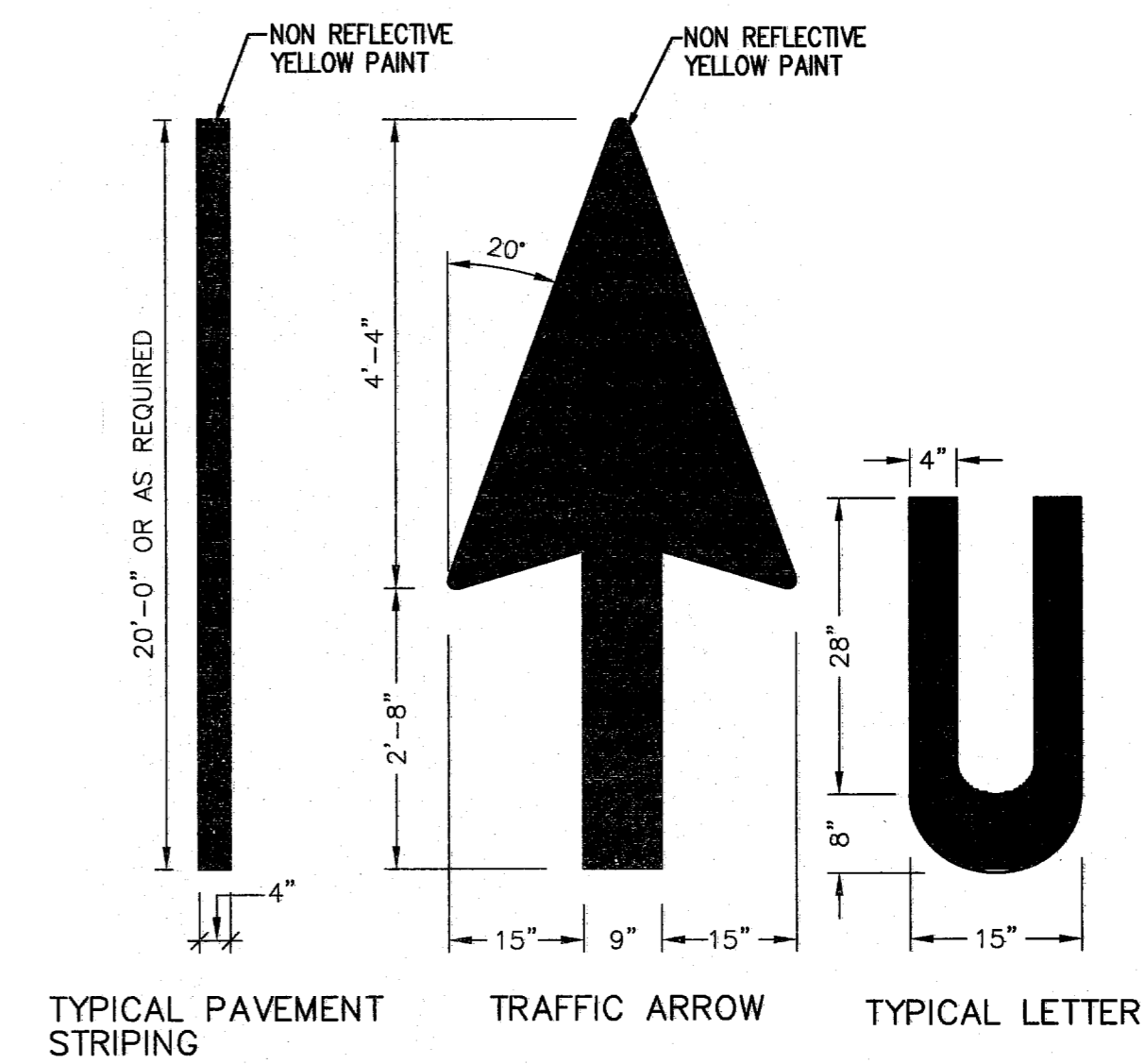
**3 | PARKING LOT SIGNAGE FOOTING**  
N.T.S.

**SIGN NOTE:**  
CONTRACTOR TO VERIFY SIGNS AND SIGN LOCATIONS WITH OWNER PRIOR TO INSTALLATION.



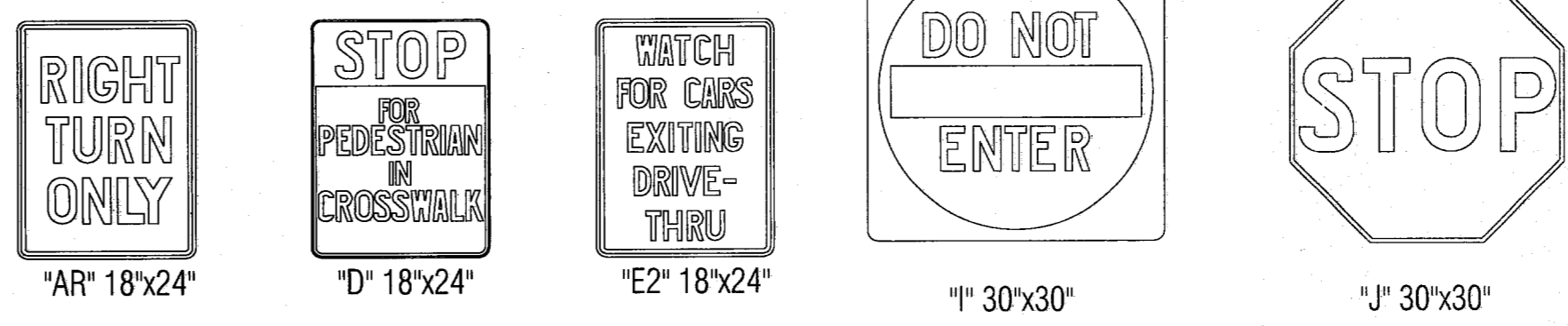
**DIRECTIONAL SIGN SCHEDULE:**

- PARKING LOT NOTES:**
1. PARKING STALLS MUST BE STRIPED WITH A 4 INCH CONTRASTING STRIPE (YELLOW ON CONCRETE AND YELLOW OR WHITE ON ASPHALT PARKING LOT).
  2. HANDICAP PARKING SPACES ARE TO BE DESIGNATED BY BLUE STRIPING & EITHER A BLUE SYMBOL ON A WHITE BACKGROUND OR A WHITE SYMBOL ON A BLUE BACKGROUND. ALL HANDICAP PARKING SPACES REQUIRE THE INSTALLATION OF THE PROPER SIGNAGE.
  3. ALL WHEEL STOPS AND CONCRETE CURBS SHALL BE CONSTRUCTED IN ACCORDANCE WITH THE DETAILS SHOWN IN THIS PLAN SET.
  4. ALL PARKING SPACES ARE TO BE LAID OUT IN ACCORDANCE WITH THE TYPICAL DETAIL AS SHOWN ON THIS PLAN UNLESS OTHERWISE INDICATED ON THIS PLAN.



NOTE:  
PAINT SHALL BE APPLIED AT A THICKNESS OF 22 WET MILS AND 15 DRY MILS.

**4 | TYPICAL PAVEMENT MARKINGS**  
N.T.S.



**2 | STANDARD PARKING LOT SIGNS**  
N.T.S.

**TEMPORARY BENCHMARK #1:**  
SOUTHWEST CORNER OF INLET BEING 11.3' EAST OF SOUTHEAST CORNER OF SUBJECT TRACT. ELEVATION = 617.27

**CITY BENCHMARK COA-11:**  
SOUTHEAST CORNER OF INLET 261' EAST AND 5.7' NORTH OF NORTHEAST CORNER OF SUBJECT TRACT. ELEVATION = 611.74