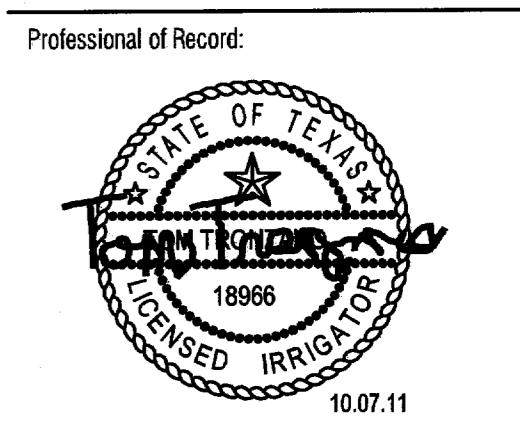


Restaurant Support Office
5800 Temponson Parkway, STE 200, Plano, TX 75024
Tel: 972 769-3357 Fax: 972 769-3101

Store:
Raising Cane's
Store # 98
Belt Line Road
Addison, TX 75001
Prototype 2



Architect Information:
CSRS
architects engineers

CSRS, Inc.
6767 Perkins Road Suite 200 Baton Rouge, LA 70808
Tel: 225 769-0546 Fax: 225 767-0060
www.csronline.com

SMI
landscape architects, inc.
1700 S. Loop West
Dallas, Texas 75225
Tel: 214-871-5885
Fax: 214-871-5885
Email: smi@smi.com

Prototype Issue Date: August 1, 2010

Design Bulletin Updates:

Date Issued:	Bulletin Number:

FOR CONSTRUCTION

Revisions:

#	Date	Description
Δ	10-07-2011	PERMIT/OWNER REVIEW

Sheet Title:
IRRIGATION PLAN
Date: October 07, 2011
Project Number: 211057
Drawn By:
Sheet Number:

L2.01

TCEQ 2009 NOTES

- All irrigation equipment to be located no closer than 4" to any pavement and / or structure
- Electrical splices at each valve and controller only.
- Irrigation in Texas is regulated by the Texas Commission on Environmental Quality (TCEQ) MC-175 / P.O. BOX 13067 Austin, Texas 78711-3067 www.tceq.state.tx.us

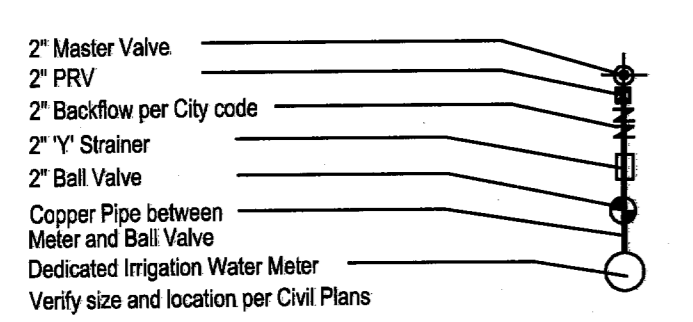
BUBBLER PIPING CHART

- 1-5 BUBBLERS - 1/2" PIPE
- 6-10 BUBBLERS - 3/4" PIPE
- 11-20 BUBBLERS - 1" PIPE
- 21-30 BUBBLERS - 1 1/4" PIPE
- 31-40 BUBBLERS - 1 1/2" PIPE

IRRIGATION LEGEND

- WM LX-4 4" Pop-up Spray Head with a Plastic MPR Nozzle
- WM LX-12 12" Pop-up Spray Head with a Plastic MPR Nozzle
- IRRITROL 533 BUBBLERS
- WM 11000 Series Control Valves
- RAINBIRD RZC-100-RPF Med. Flow Zone Control Kit with Valve, Basket Filter, and Pressure Regulator
- Weathermatic ET Based System Controller with Weather Monitor
- WATER METER, SIZE AS INDICATED
- D.C.A., SIZE AS INDICATED
- To include Wye Strainer, Isolation Valve, Master Valve, and Pressure Regulator

- PVC CLASS 200 LATERAL LINE
- PVC CLASS 200 MAINLINE
- PVC SCHEDULE 40 SLEEVING
- VALVE SIZE
- GPM
- NETAFIM TECHLINE TL.DL.6-1210 (16" LATERAL SPACING, 12" EMITTER SPACING)
- PVC LATERAL PIPING SIZED AS REQUIRED
- INSTALL ALL EQUIPMENT ACCORDING TO MANUFACTURERS SPECIFICATIONS
- NETAFIM DISC FILTER #DF100-080
- NETAFIM PRESSURE REGULATOR #PRV15025
- INSTALL ALL EQUIPMENT ACCORDING TO MANUFACTURERS SPECIFICATIONS



SLEEVING NOTES

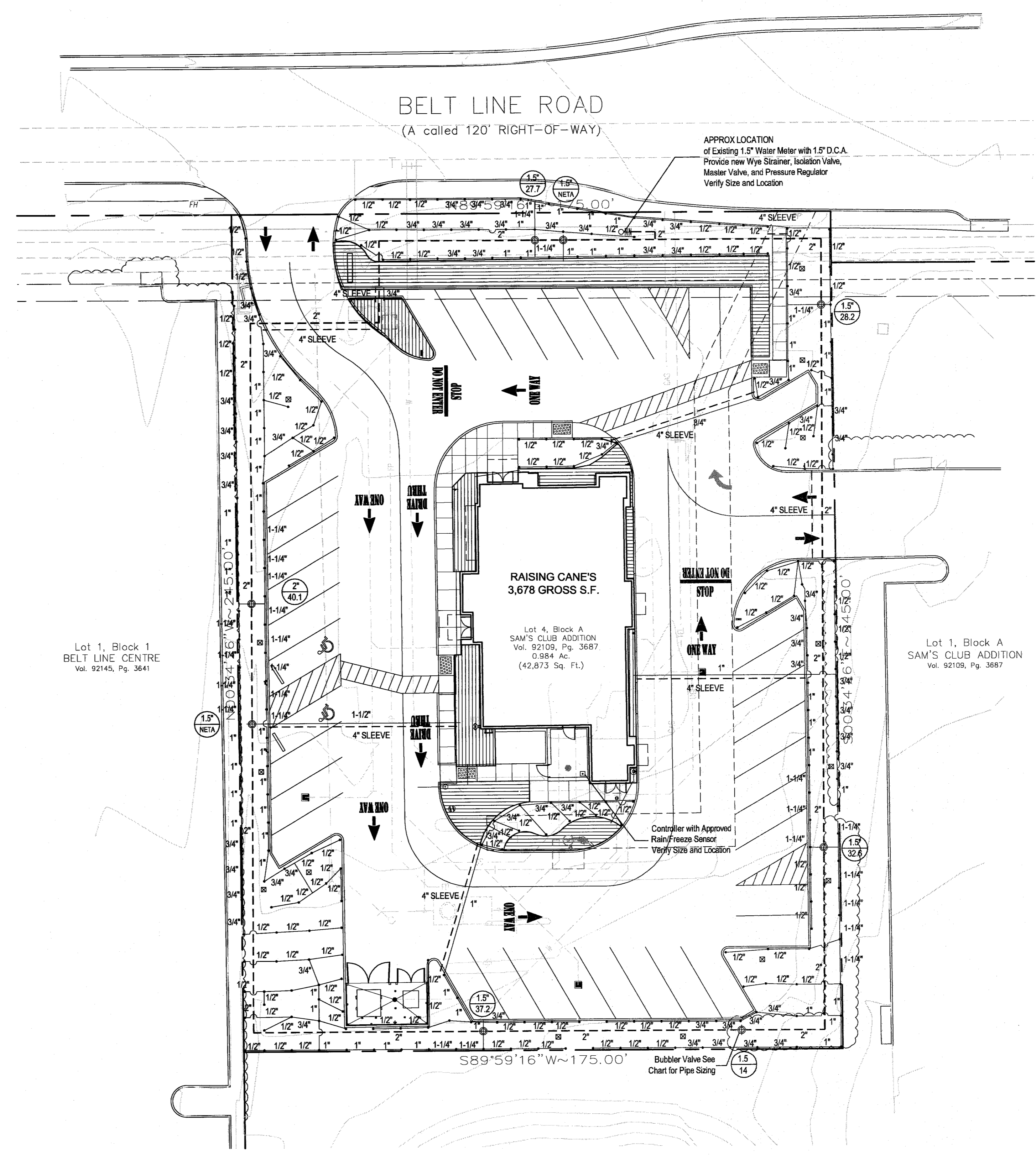
- Contractor shall lay sleeves and conduits at twenty-four (24) inches below finish grade of the top of pavement.
- Contractor shall extend sleeves one (1) foot beyond edge of all pavement.
- Contractor shall cap pipe ends using PVC caps.
- All sleeves shall be Schedule 40 PVC pipe.
- Contractor shall furnish Owner and Irrigation Contractor with an 'as-built' drawing showing all sleeve locations.

IRRIGATION NOTES

- All sprinkler equipment numbers reference the Weathermatic equipment catalog unless otherwise indicated.
- LAWN SPRAY HEADS are WM LX-4 installed as per detail shown.
- SHRUB SPRAY HEADS are WM LX-12 installed as per detail shown.
- ELECTRIC CONTROL VALVES shall be WM 11000 SERIES installed as per detail shown. Size valves as shown on plan. Valves shall be installed in valve boxes large enough to permit manual operation, removal of solenoid and/or valve cover without any earth excavation.
- AUTOMATIC CONTROLLER shall be installed at location shown. Power (120V) shall be located in a junction box within five (5) feet of controller location by other trades.
- All 24 volt valve wiring is to be UF 14 single conductor. All wire splices are to be permanent and waterproof.
- SLEEVES shall be installed by General Contractor. Sleeve material shall be Schedule 40. Size as indicated on plan.
- Ten days prior to start of construction, Landscape or Irrigation Contractor shall verify static water pressure. If static pressure is less than 65 P.S.I., do not work until notified to do so by Owner.
- All main line and lateral piping to a minimum of 12 inches of cover. All piping under paving shall have a minimum of 18" of cover.
- The Irrigation Contractor shall coordinate installation of the system with the Landscape Contractor so that all plant material will be watered in accordance with the intent of the plans and specifications.
- The Irrigation Contractor shall select the proper arc and radius for each nozzle to insure 100% and proper coverage of all lawn areas and plant material. All nozzles in parking lot islands and planting beds shall be low angle to minimize over spray on pavement surfaces. No water will be allowed to spray on building.

DRIP IRRIGATION NOTES

- Drip Irrigation Equipment numbers reference Rainbird Equipment Catalog unless otherwise noted.
- Landscape Contractor shall be required to supply Owner's Construction Manager with all equipment specifications and maintenance guidelines.
- Landscape Contractor shall be required to follow Manufacturer's Specifications and Installation guidelines for drip system.
- PRESSURE COMPENSATING EMITTERS shall be: Multiset Rain Bug EM6-M101, Multi outlet Shrub Bug EM16-M101 or approved equal. (1 PER EVERY 6 - 4" POTS)
- SINGLE OUTLET PRESSURE COMPENSATING EMITTERS shall be: Rain Bug Emitters EM-M6S, -M10, -M20 and Shrub Bug Emitters EMT-M10, -M20 or approved equal. (1 PER EACH 1 OR 5 GAL PLANT)
- DRIP PRESSURE REGULATORS shall be: PSHLA-15, PSHLA-20, PSHMB-20, PSHMB-25 or approved equal.
- Y-FILTERS shall be: RBY-075-200, RBY-100-200 or approved equal.
- MAIN IRRIGATION TUBING shall be: RBT-150P, RBT-160V or approved equal.
- EMITTER DISTRIBUTION TUBING shall be: RBT-150P, RBT-160V or approved equal.
- SUBTERRANEAN EMITTER BOX shall be: SEB-6 or approved equal.
- Drip system piping only occurs within shrub / groundcover beds and rock mulch areas. Piping shall be a maximum 4" depth and a minimum 2" depth.
- Contractor shall verify that all drip system valves and spray system valves are sectioned separately on controller.



01 IRRIGATION PLAN
SCALE: 1" = 20'-0"
0 10 20 40

