

General Notes

1. All materials and construction shall be in accordance with the Town of Addison Standard Specifications and Construction Standards, and Standard Specifications for Public Works Construction prepared by North Central Texas Council of Governments (Latest Revision).
2. Existing utilities are shown schematically and are for the contractor's guidance only. The location and/or elevation of existing utilities as shown on these plans are based on records of the various utility companies, and, where possible, measurements taken in the field. The contractor must call the appropriate utility company at least 48 hours prior to any excavation to request exact field location of utilities.
3. The contractor shall be responsible for protecting all existing improvements in the construction of this project. The contractor is responsible for repairs of damage to any existing improvements during construction. Repairs shall be equal to or better than condition prior to construction.
4. All paving dimensions are to the FACE of curb, where applicable, unless noted otherwise.
5. All curb radii are 2' unless noted otherwise.
6. All curb radii for drives shall be 20' unless noted otherwise.
7. All parking spaces are 9'x 18', unless noted otherwise.
8. Firelanes shall be striped in accordance with the Town of Addison Standards.
9. All concrete pavement shall be sawcut at 12' O.C.E.W. unless noted otherwise.
10. Parking stripes shall be 4" wide, spray applied white vinyl acrylic paint. Paint shall be applied in two coats to a clean, dry surface using template or striping machine.
11. All paving and earthwork operations shall conform to the recommendations in Geotechnical Report No. J-101-0190, dated May. 30, 2001, GEE Consultants, Inc.
12. All on-site pavement shall be 3000 P.S.I. concrete reinforced with #3 bars spaced at 18" O.C.E.W. over compacted subgrade. Pavement shall be 5-inches thick in Light-Duty (auto traffic only) areas, and 7-inches thick in Fire Lanes & Drive Approaches, as designated on plan, and as per Geotechnical Report. All Drive approaches shall be 4000 P.S.I. reinforced concrete.
13. All pavement subgrade shall be compacted to at least 95% Standard Proctor Density at or slightly above Optimum Moisture Content.

Drive Approach Notes

Where there is an existing sidewalk, or where a new sidewalk is proposed or is being built for a new development, the installation or replacement of a drive approach will require the incorporation of the accessible ramps into the design of the approach. In such cases, the cross-slope of the approach in the area of the sidewalk crossing may not exceed 1:48 (1/4" per foot). Also, the running slope of the sidewalk ramps may not exceed 1:12 (1" per foot) for a minimum width of (3) feet. All ramp construction must comply with the most current specifications of the Texas Department of Licensing and Regulation (ph#512-463-3211).

Any stakes used for supporting forms shall be cut 2" down from the surface of the new pavement. The thickness of the approach shall be a minimum of 6", but if existing street pavement is thicker, match existing for 1 foot, then taper to 6". Curb expansion "ears" shall be placed at the connection to existing curb. After drilling for the dowel bars, blow out the drilling dust, and epoxy the bars into the existing pavement. Dowels must be set level and perpendicular to the face of existing concrete. Clean all saw dust or mud from face of concrete. Number three (3) rebar shall be placed on 18" centers both ways, and tied to dowel bars. Support rebar mat with 3" chairs.




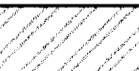
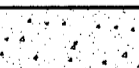

Subgrade shall be compacted and uniformly level, with all organic material and/or loose rocks and dirt clods removed. Any deep soft or muddy areas shall be removed and refilled with a suitable base material (i.e. Flowable fill, CTB Flex base).

!!! CAUTION !!!
Existing Utility Lines In Area
Contractor To Verify Existing Utility Locations
Contact Appropriate Utility Companies
48 Hrs. Prior To Any Construction

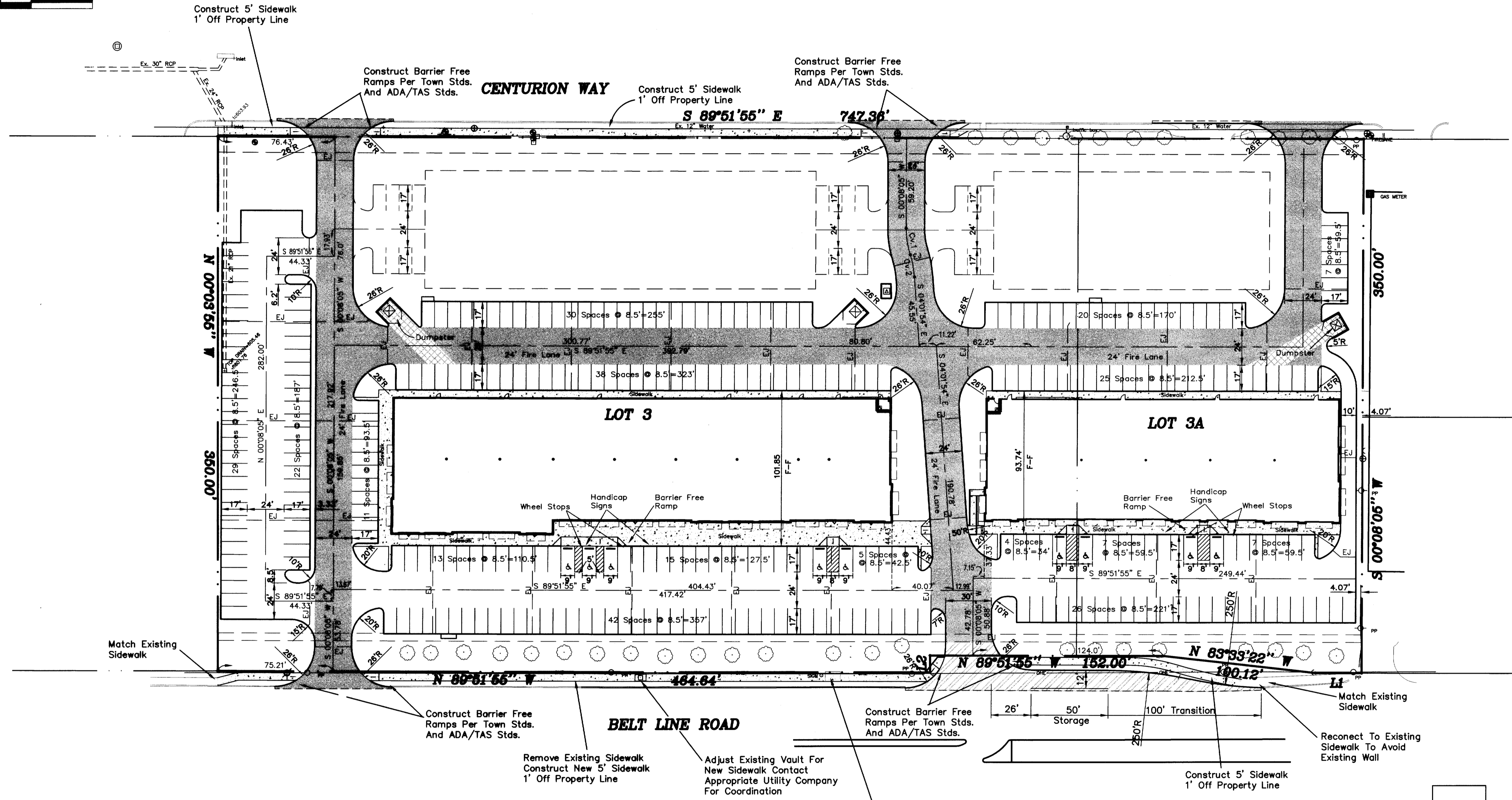
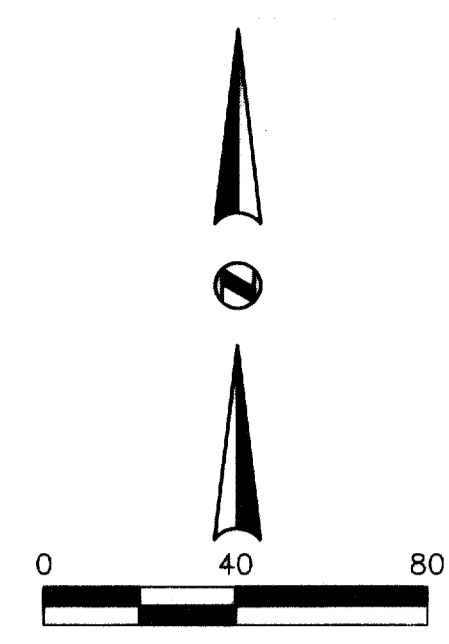
!!! CAUTION !!!
Existing Private Utility Lines On Site
Contractor To Verify Existing Utility Locations
Field Verify Both Location & Depth
Visibly Mark All Existing Utilities
Prior To Any Construction
These Markings Are To Be Maintained
And Remain During The Entire
Construction Process

!!! CAUTION !!!
Existing Utility Lines In Area
Contractor To Verify Existing Utility Locations
Contact Appropriate Utility Companies
48 Hrs. Prior To Any Construction

LEGEND

-  5" 3500 psi Concrete W/#3 Bars 18"ocew With 6" Compacted Subgrade
-  6" 3500 psi Concrete W/#3 Bars 18"ocew With 6" Compacted Subgrade
-  8" 3500 psi Concrete W/#3 Bars 18"ocew With 6" Compacted Subgrade
-  10" 3500 psi Concrete W/#3 Bars 18"ocew With 6" Compacted Subgrade
-  4" Sidewalk Pavement
-  Expansion Joint

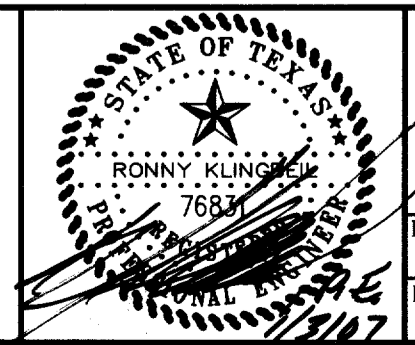
RECORD DRAWING
REVISED TO CONFORM TO CONSTRUCTION RECORDS
Ronny Klingbell, P.E.
Date 1/3/07



MISC. INFORMATION	REVISION	DATE	DESCRIPTION
<p>NOTE: Prior to beginning any construction or construction staking, it shall be the Contractor's responsibility to contact the civil engineer to insure that all parties are in possession of the most current set of construction documents.</p>			



RLK ENGINEERING, LLC
111 West Main
Allen, Texas 75013
(972) 359-1733 Off
(972) 359-1833 Fax



DESIGNED BY: RLK Engineering	TECH REVIEW: RLK	DRAWING FILE: 04090 PAV3.dwg	DRAWING SCALE: 1" = 40'	SHEET: C 1 OF 8
DRAWN BY: RLK Engineering	PEER REVIEW: RLK	DRAWING DATE: 01/03/07	PROJECT NUMBER: RLK 04090	

SITE PLAN
ADDISON WEST INDUSTRIAL PARK
4135 BELT LINE ROAD
ADDISON, TEXAS