

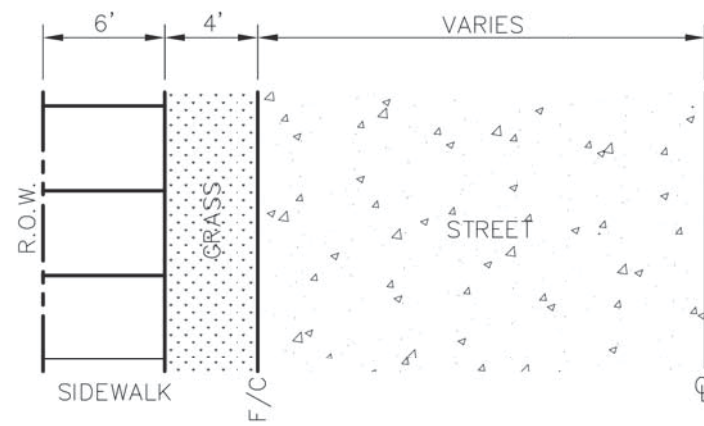
PAVING — GENERAL NOTES

- GENERAL: PAVEMENT THICKNESS IS AS SHOWN IN ITEM 7. SUBGRADE DESIGN SHALL CONFORM TO TOWN OF ADDISON PUBLIC WORKS REQUIREMENTS IN ITEM 3, AND SHALL EXTEND 12" MIN. BEHIND THE BACK OF CURB.
- REINFORCED CONCRETE PAVEMENT:
 - CONCRETE STRENGTH SHALL BE AS SHOWN IN ITEM 7 (NCTCOG LATEST EDITION).
 - ALL CURBS SHALL BE INTEGRAL WITH PAVEMENT AND SHALL BE OF THE SAME STRENGTH AS CONCRETE PAVEMENT.
 - DETAIL AND ARRANGEMENT OF PAVEMENT JOINTS, ALL TYPES, SHALL BE AS SHOWN ON THE TOWN STANDARD CONSTRUCTION DETAILS.
 - BAR LAPS SHALL BE THIRTY DIAMETERS.
 - REINFORCING STEEL SHALL BE #3 REBAR (3/8") ON 18" CENTERS FOR 8" OR LESS, #4 FOR 10" OR ABOVE.
- SUBGRADE: SUBGRADE UNDER ALL PAVEMENT SHALL BE 6" THICK AND SHALL BE STABILIZED WITH AT LEAST 30 LBS. PER SQ. YD. HYDRATED LIME, COMPACTED TO A DENSITY NOT LESS THAN 95 PERCENT. LABORATORY TESTS MUST BE SUBMITTED TO THE PUBLIC WORKS DEPARTMENT FOR APPROVAL TO DETERMINE AMOUNT OF LIME REQUIRED. LABORATORY TEST MAY BE WAIVED PROVIDED AT LEAST 36 LBS. OF LIME PER SQ. YD. IS USED. SEE NCTCOG ITEM 301.2 "LIME TREATMENT". FLEXIBLE BASE (CRUSHED STONE/CONCRETE) PER NCTCOG ITEM 301.5 MAY BE SUBSTITUTED FOR LIME TREATMENT WITH THE APPROVAL OF THE TOWN ENGINEER.
- REBAR SHALL BE SUPPORTED BY BAR CHAIRS OR OTHER DEVICES APPROVED BY TOWN ENGINEER.
- NO TRAFFIC ON FINISHED SUBGRADE SHALL BE PERMITTED AFTER REINFORCING STEEL IS INSTALLED ABOVE SUBGRADE. NO TRAFFIC SHALL BE PERMITTED BEFORE OR DURING THE PLACING OF CONCRETE.
- CROSS SLOPE OF STRAIGHT CROWN STREETS SHALL BE 1/4" PER FOOT UNLESS APPROVED BY THE TOWN ENGINEER.
- PAVEMENT THICKNESS AND STRENGTHS SHALL BE AS FOLLOWS:

MAJOR ARTERIAL	10" CLASS "P1" OR "P2"
MINOR ARTERIAL	8" CLASS "P1" OR "P2"
COMMERCIAL/INDUSTRIAL COLLECTOR	8" CLASS "P1" OR "P2"
RESIDENTIAL COLLECTOR	8" CLASS "P1" OR "P2"
RESIDENTIAL LOCAL	8" CLASS "P1" OR "P2"
SIDEWALK AND BFR's	4" CLASS "A"
DRIVE APPROACH	8" CLASS "P2"
ALLEY	6" CLASS "P1" OR "P2"
- CONCRETE MIX DESIGN SHALL BE AS DEFINED BY NCTCOG 303.3.
- ALL MEDIANS AND PARKWAYS SHALL BE PROVIDED WITH BERMUDA GROUND COVER.
- ONCE A CURB ABUTTING A THOROUGHFARE HAS BEEN SAWCUT AND REMOVED, THE CONTRACTOR MUST REPLACE THE CONCRETE WITH A NEW POUR (i.e. DRIVEWAY) WITHIN 14 CALENDAR DAYS. LIQUIDATED DAMAGES WILL BE ASSESSED AT \$500 PER DAY FOR EACH CALENDAR DAY IN EXCESS OF 14 CALENDAR DAYS. PAYMENT SHALL BE MADE PRIOR TO ACCEPTANCE OR ISSUANCE OF A CERTIFICATE OF OCCUPANCY.
- ALL SIDEWALKS AND ACCESSIBLE ROUTES SHALL HAVE A MAXIMUM LONGITUDINAL SLOPE OF 5% AND A MAXIMUM CROSS SLOPE OF 2%.
 - CONCRETE FOR ALLEY RETURNS AND DRIVEWAYS SHALL HAVE A MINIMUM COMPRESSIVE STRENGTH AT 28 DAYS IDENTICAL TO THAT SPECIFIED FOR THE STREET PAVEMENT OR BASE WHEN BUILT AS COMPONENTS OF A CONCRETE PAVING PROJECT. WHEN BUILT SEPARATELY, THE STRENGTH SHALL BE AS SPECIFIED ON THE CONSTRUCTION PLAN.
 - SPACING AND CONSTRUCTION OF JOINTS SHALL CONFORM TO PARABOLIC STREET PAVEMENT.

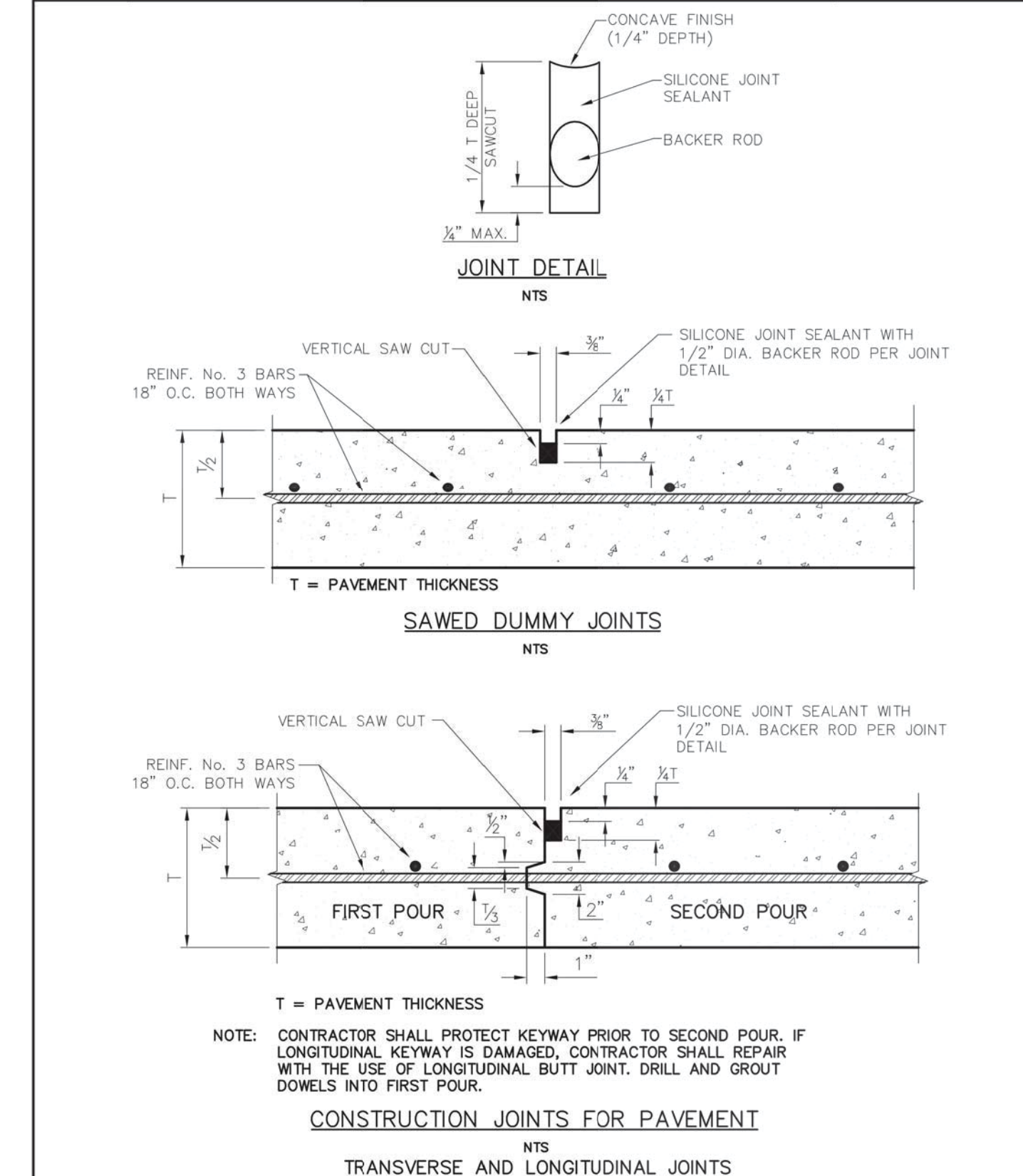
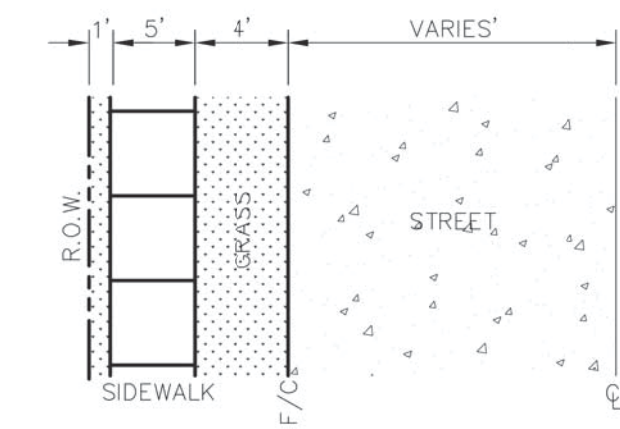
ARTERIAL

6" SIDEWALK EDGE SHALL BE LOCATED ON THE R.O.W. LINE OF ARTERIAL STREETS.

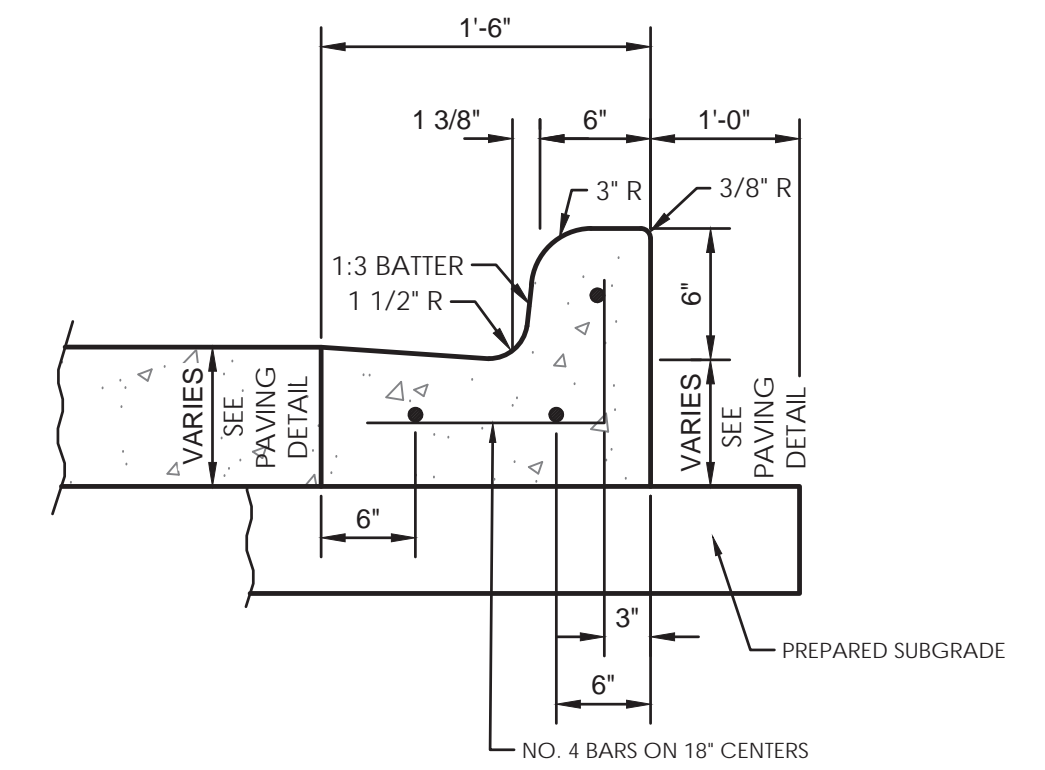


RESIDENTIAL/COLLECTOR

5" SIDEWALK SHALL BE LOCATED 1' INSIDE R.O.W. OF RESIDENTIAL STREETS.



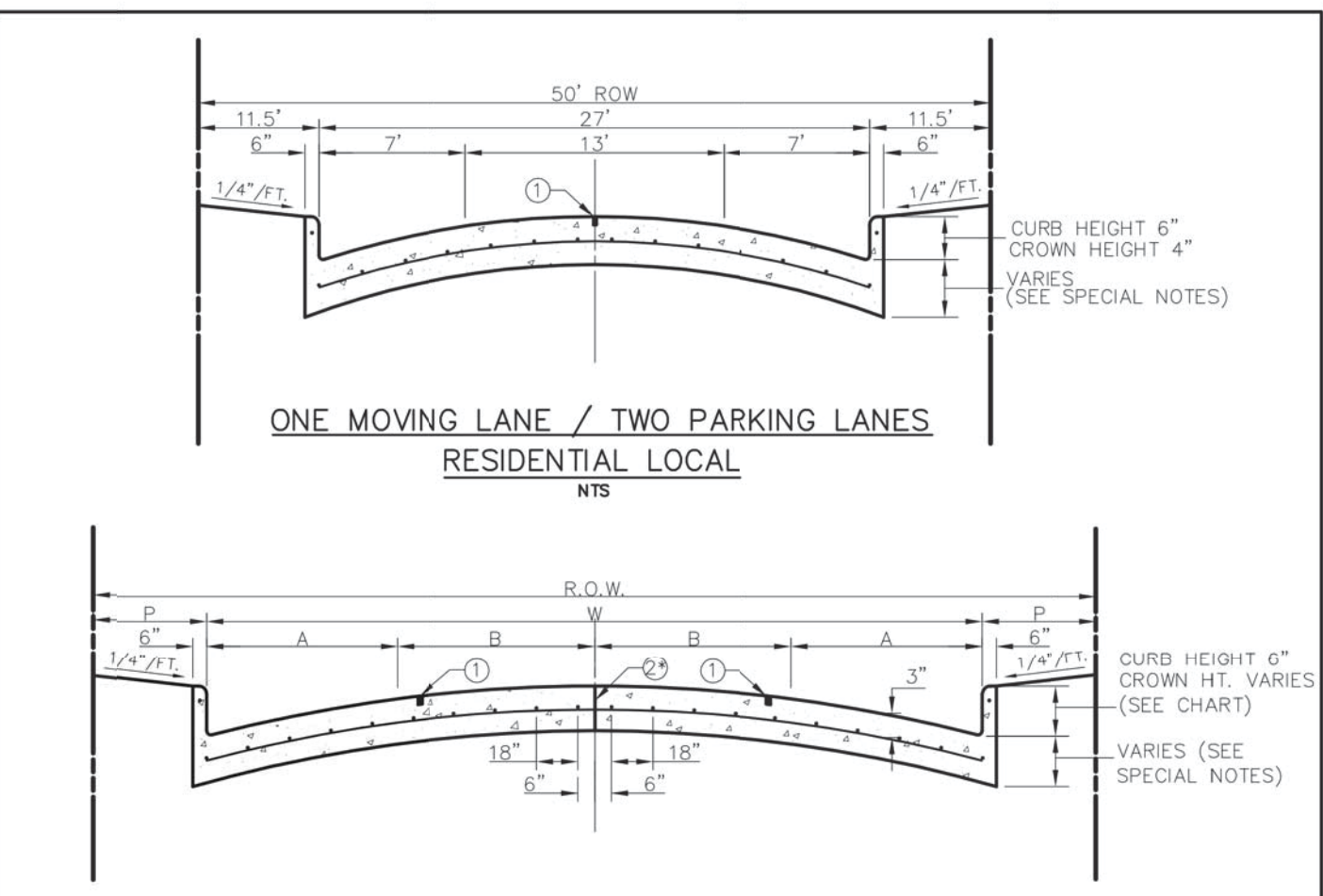
Addison! PUBLIC WORKS DEPARTMENT	JOINT DETAILS	STANDARD CONSTRUCTION DETAILS PAVING	
		DATE: AUGUST, 2010	SHEET: 30-P18



6" INTEGRAL CURB
NOT TO SCALE

Addison! PUBLIC WORKS DEPARTMENT	CONCRETE SIDEWALK CONTINUED	STANDARD CONSTRUCTION DETAILS PAVING	
		DATE: AUGUST, 2010	SHEET: 30-P17

Addison! PUBLIC WORKS DEPARTMENT	PAVING GENERAL NOTES	STANDARD CONSTRUCTION DETAILS PAVING	
		DATE: AUGUST, 2010	SHEET: 30-P19

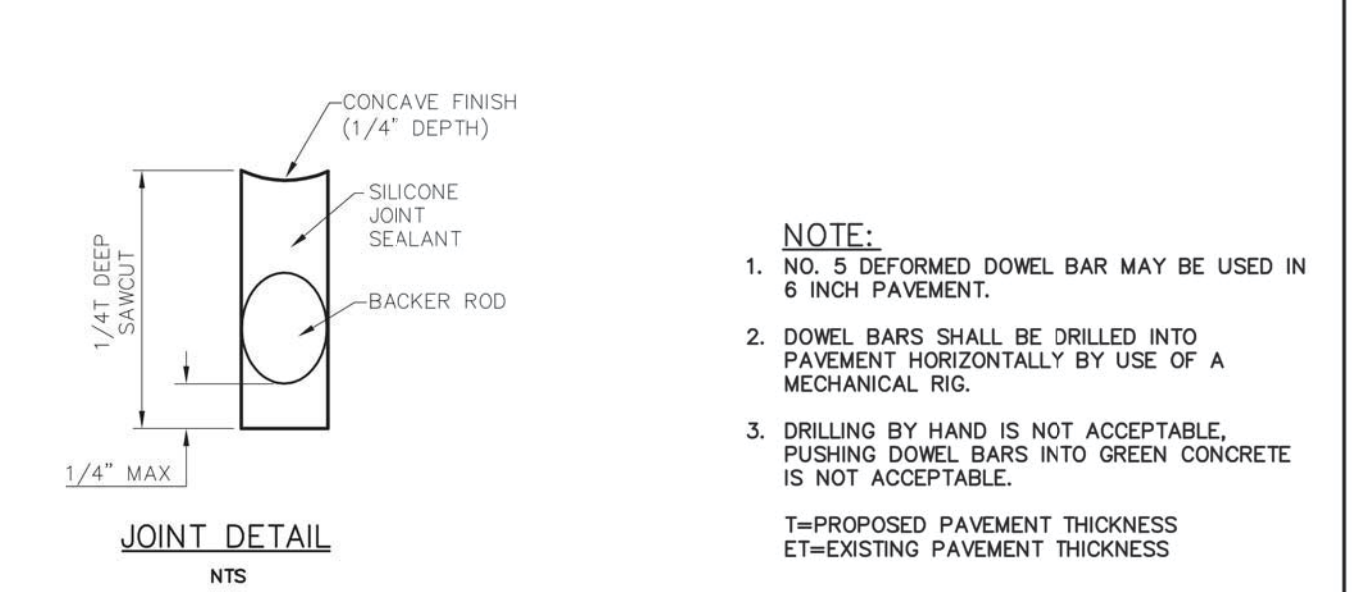
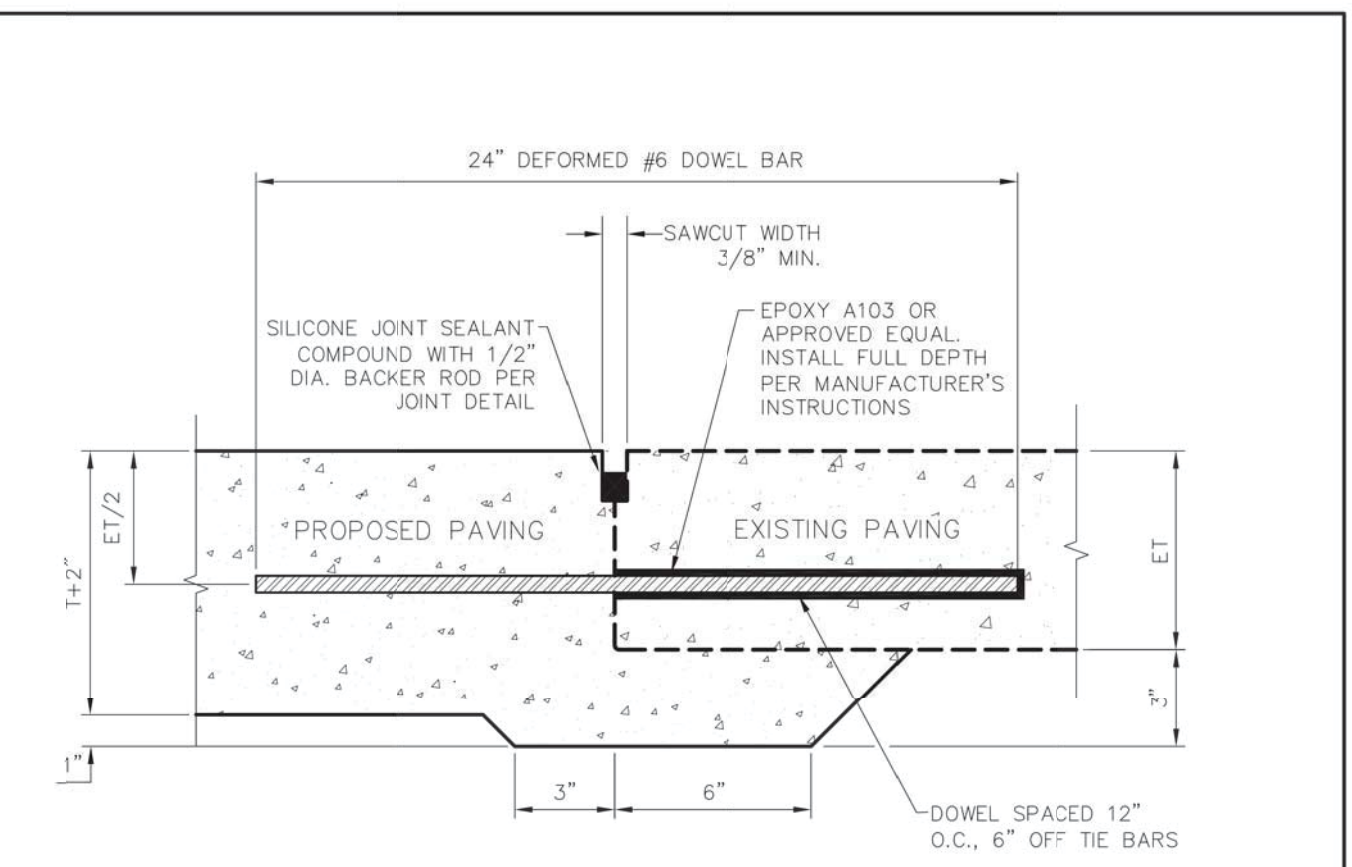


* FULL WIDTH PAVEMENT OF 36' WIDTH STREETS IS ALLOWED WHERE APPROVED BY THE PUBLIC WORKS DEPT.

STREET TYPE	STREET WIDTH (W)	A	B	R.O.W. WIDTH	P	CROWN HT.
RESIDENTIAL COLLECTOR	36'	7'	11'	60'	12'	5"
64' COMMERCIAL / INDUSTRIAL COLLECTOR	44'	10'	12'	64'	10'	6"
68' COMMERCIAL / INDUSTRIAL COLLECTOR	48'	12'	12'	68'	10'	6"

- ① SAWED LONGITUDINAL DUMMY JOINT.
 ② CONSTRUCTION JOINT (FULL WIDTH PAVEMENT IS ALLOWED WHERE APPROVED BY THE PUBLIC WORKS DEPARTMENT).
 ③ ALL REINFORCING BARS SHALL BE NO. 3 TRANSVERSE BARS TO BE SPACED ON 18" CENTERS. LONGITUDINAL BARS SHALL BE PLACED ON 18" CENTERS EXCEPT WHERE NOTED.
 ④ CURB REINFORCEMENT SHALL BE CONTINUOUS NO. 3 BAR.

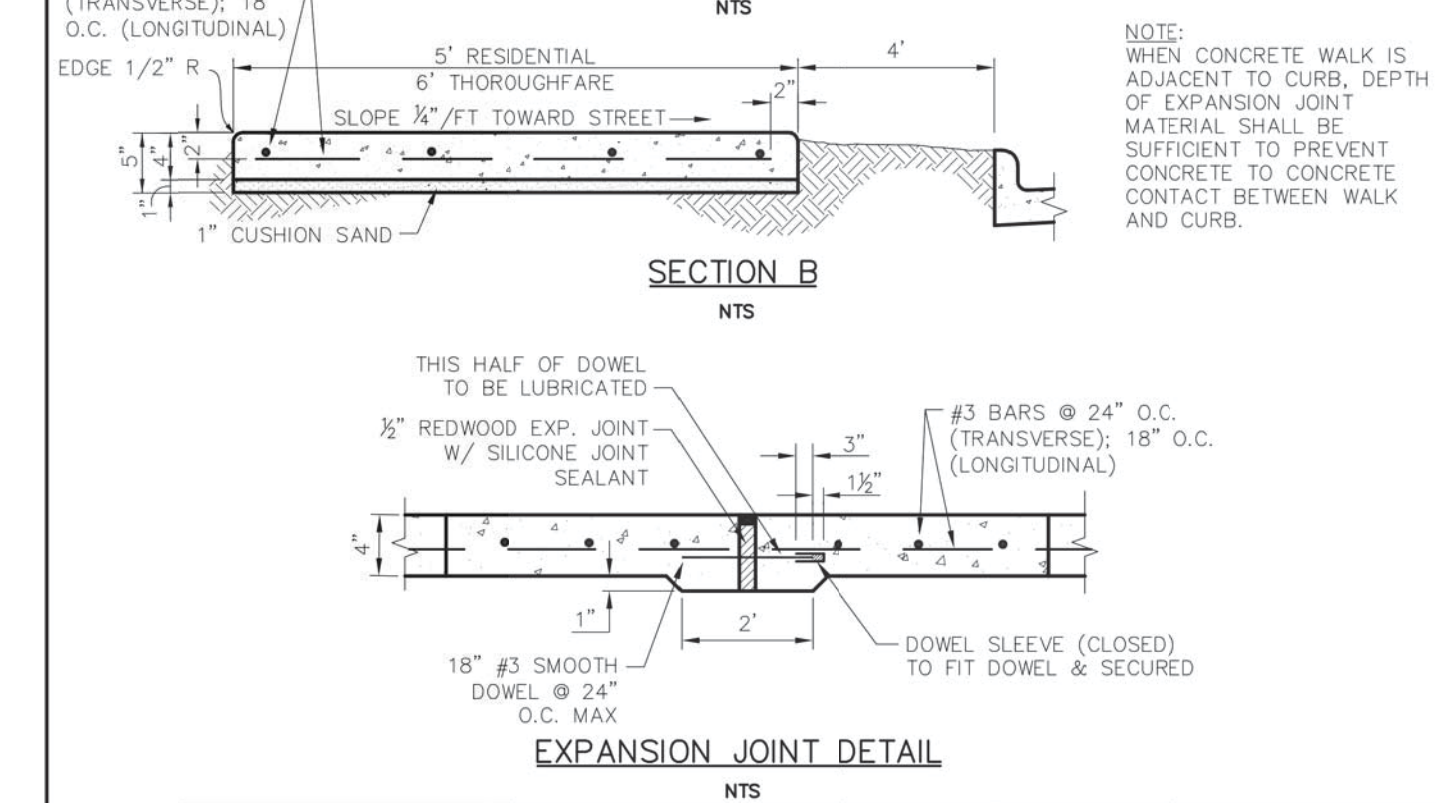
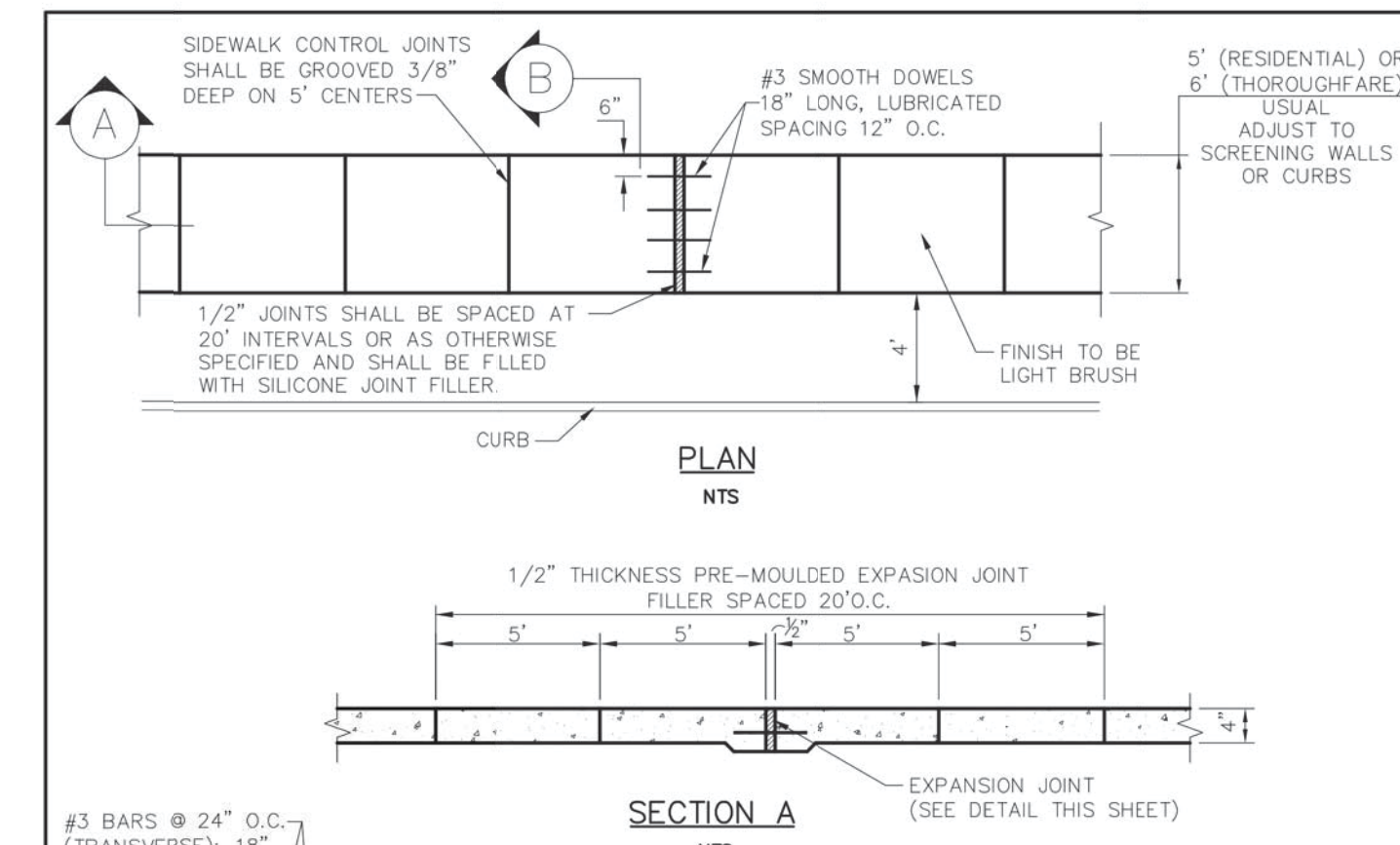
Addison! PUBLIC WORKS DEPARTMENT	REINFORCED CONCRETE PAVEMENT	STANDARD CONSTRUCTION DETAILS PAVING	
		DATE: AUGUST, 2010	SHEET: 30-P20



PAVEMENT REPAIR HEADER
NTS

NOTE:
 1. NO. 5 DEFORMED DOWEL BAR MAY BE USED IN 6 INCH PAVEMENT.
 2. DOWEL BARS SHALL BE DRILLED INTO PAVEMENT HORIZONTALLY BY USE OF A MECHANICAL RIG.
 3. DRILLING BY HAND IS NOT ACCEPTABLE. PUSHING DOWEL BARS INTO GREEN CONCRETE IS NOT ACCEPTABLE.
 T=PROPOSED PAVEMENT THICKNESS
 ET=EXISTING PAVEMENT THICKNESS

Addison! PUBLIC WORKS DEPARTMENT	PAVEMENT REPAIR HEADER	STANDARD CONSTRUCTION DETAILS PAVING	
		DATE: AUGUST, 2010	SHEET: 30-P16



Addison! PUBLIC WORKS DEPARTMENT	CONCRETE SIDEWALK	STANDARD CONSTRUCTION DETAILS PAVING	
		DATE: AUGUST, 2010	SHEET: 30-P26

2017/12/19
SAWYER ENGINEERING, LLC
TBPE FIRM NUMBER F-9171

NO. _____						REVISION _____						BY _____						DATE _____																													
TOWN OF ADDISON DALLAS COUNTY, TEXAS IMPROVEMENT PLANS ADDISON GROVE PAVING DETAILS																																															
SAWYER ENGINEERING, LLC						1520 OLIVER STREET HOUSTON, TEXAS 77007 (832) 553-5948						PROJECT						DESIGN						DRAWN						DATE						FILE						SHEET					
CDP						JDS						MAY 2017						14																													