

**SANITARY SEWER AND WATERLINE LEGEND**

- SANITARY SEWER AND MANHOLE
- SANITARY SEWER AND CLEANOUT
- EXISTING SANITARY SEWER AND MANHOLE
- PROPOSED FIRE HYDRANT ASSEMBLY
- PROPOSED WATERLINE WITH GATE VALVE AND BOX WITH 10' W.L.E.
- EXISTING WATERLINE WITH GATE VALVE AND BOX
- PROPOSED STORM SEWER WITH MANHOLE AND INLETS
- PROPOSED PRIVATE STORM SEWER
- EXISTING STORM SEWER AND MANHOLE
- EXISTING INLET
- PROPOSED TREE WELL
- 2x6 TRUNCATED DOME PANEL
- 4" SAN. LEAD @ 1.04% WITH CLEANOUT FOR LANDSCAPE. CONTRACTOR TO MAINTAIN A MINIMUM VERTICAL SEPARATION FROM ANY OTHER UNDERGROUND UTILITY

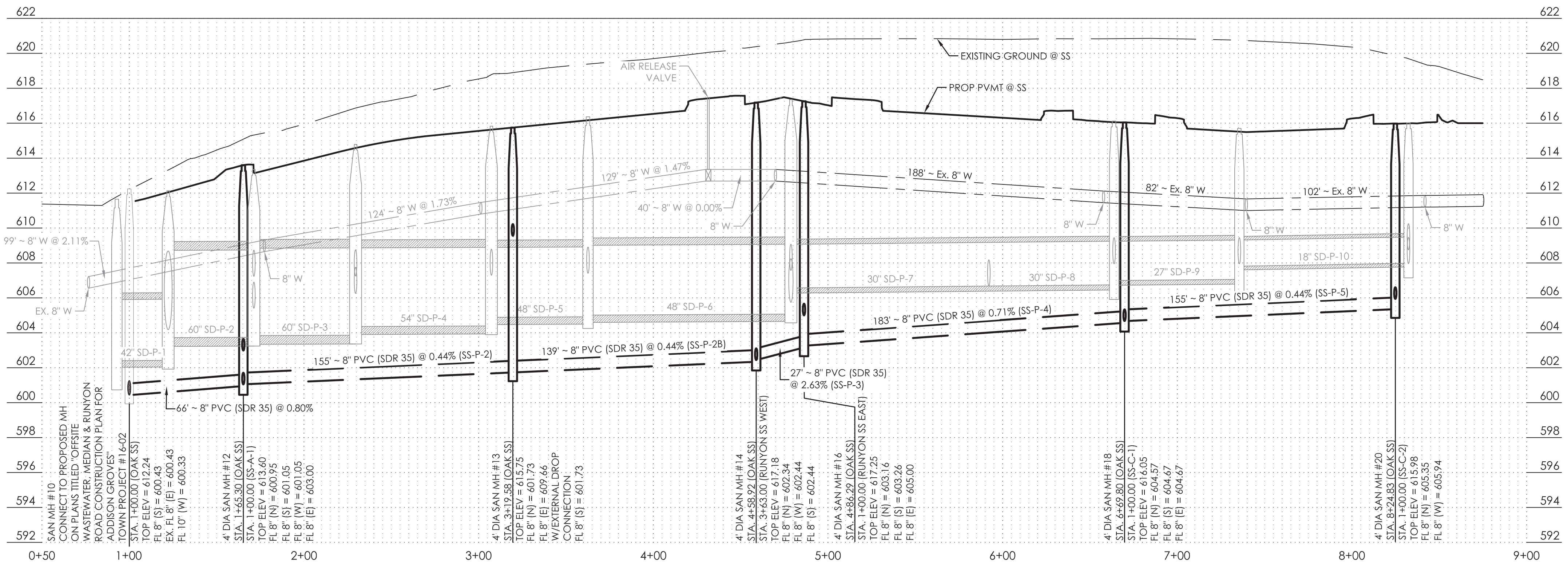
CONSTRUCTION OF SANITARY SEWER AND STORM SEWER WITHIN THE RIGHT-OF-WAY TO BE CONSIDERED PUBLIC UTILITIES INCLUDING THE TRUNK LINE EXTENDING TO THE FIRST MANHOLE OR INLET OUTSIDE THE RIGHT-OF-WAY. THE MANHOLE OR INLET OUTSIDE OF THE RIGHT-OF-WAY IS TO BE CONSIDERED PRIVATE.



2018/04/06

SAWYER ENGINEERING, LLC  
TBPE FIRM NUMBER F-9171

ONE-CALL NOTIFICATION SYSTEM  
**CALL BEFORE YOU DIG**  
1-800-545-6005  
OR OTHER UTILITY LOCATING SERVICES AT  
LEAST 48 HOURS PRIOR TO  
CONSTRUCTION ACTIVITIES.



NO.	REVISION	BY	DATE
<b>TOWN OF ADDISON</b> DALLAS COUNTY, TEXAS			
<b>IMPROVEMENT PLANS</b> ADDISON GROVE			
<b>WATER LINE AND SANITARY SEWER</b> PLAN & PROFILE - OAK STREET			
SAWYER ENGINEERING, LLC TBPE: F-9171		1520 OLIVER STREET HOUSTON, TEXAS 77007 (832) 553-5948	
PROJECT	DESIGN	DRAWN	DATE
	CDP	JDS	MAY 2017
FILE	SHEET		
	34		