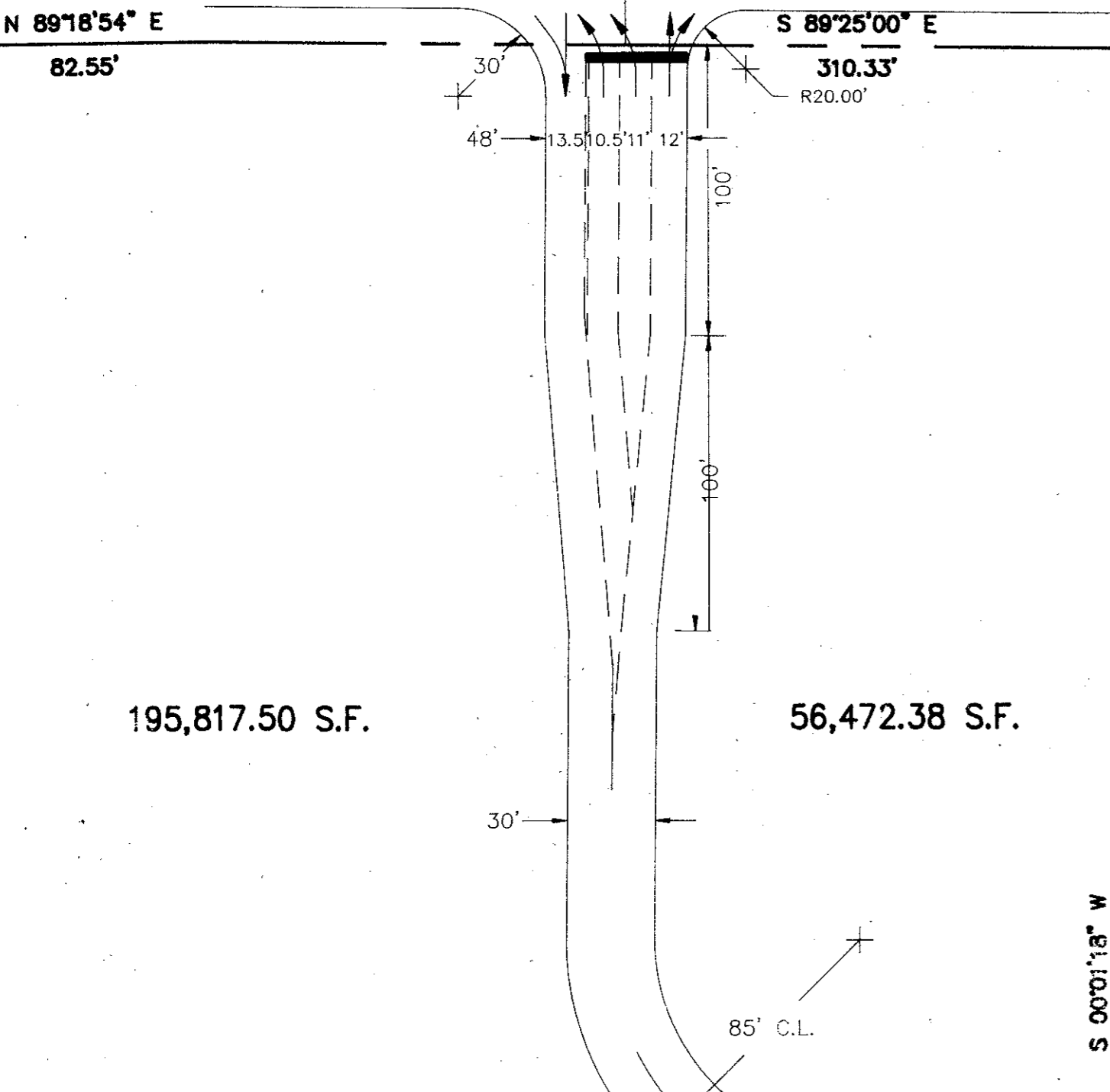
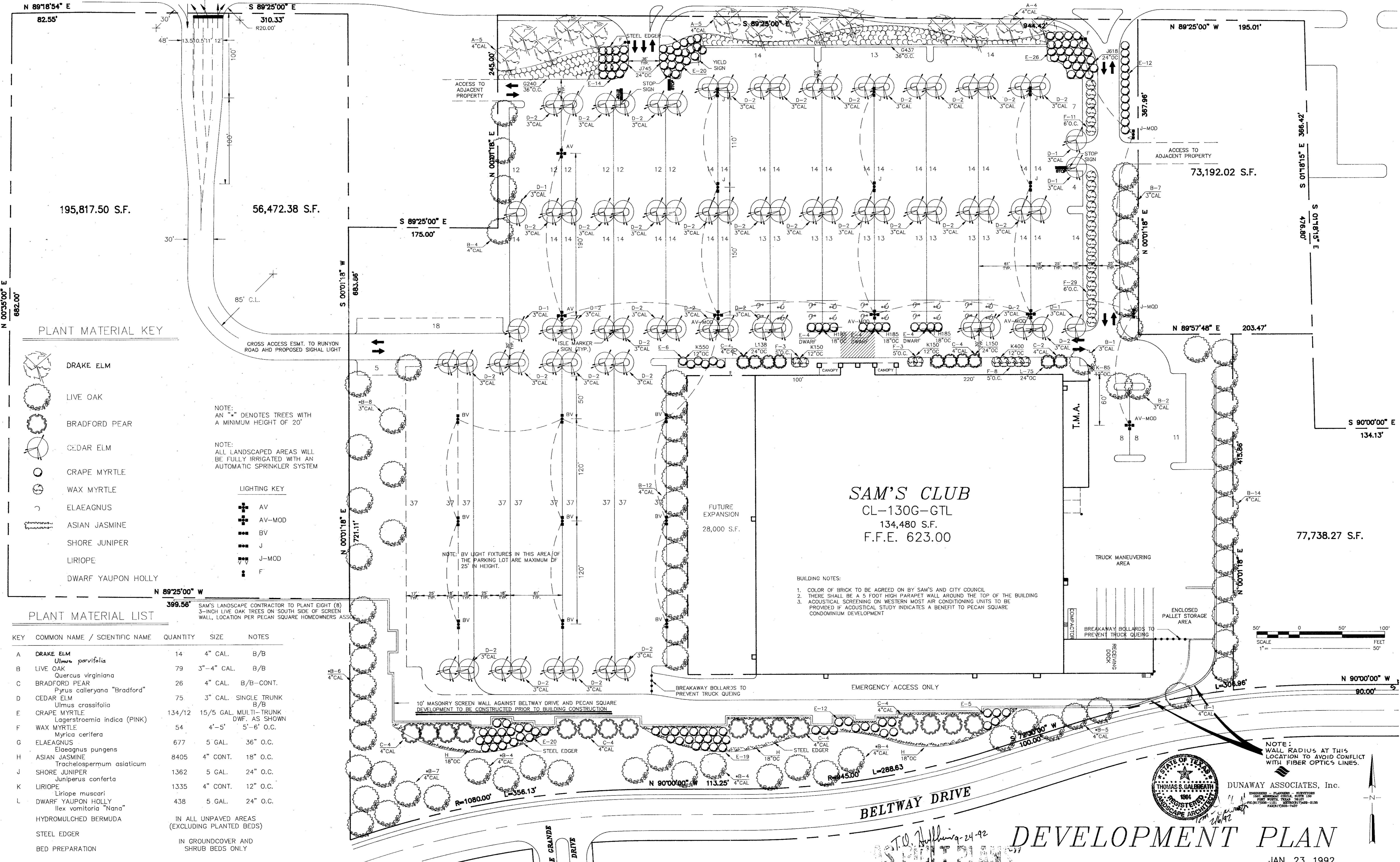


**BELTLINE ROAD**

NOTE: EXISTING MEDIANS TO BE REWORKED TO PROHIBIT INGRESS OR EGRESS TO SAM'S DEVELOPMENT

NOTE: LAYOUT OF EXISTING MEDIANS PENDING SURVEY INFORMATION

NOTE: EXISTING MEDIANS TO BE REWORKED TO PROHIBIT WESTBOUND TURNS OUT OF SAM'S DEVELOPMENT



**PLANT MATERIAL KEY**

- DRAKE ELM
- LIVE OAK
- BRADFORD PEAR
- CEDAR ELM
- CRAPE MYRTLE
- WAX MYRTLE
- ELAEAGNUS
- ASIAN JASMINE
- SHORE JUNIPER
- LIRIOPE
- DWARF YAUPON HOLLY

NOTE: AN "A" DENOTES TREES WITH A MINIMUM HEIGHT OF 20'

NOTE: ALL LANDSCAPED AREAS WILL BE FULLY IRRIGATED WITH AN AUTOMATIC SPRINKLER SYSTEM

**LIGHTING KEY**

- AV
- AV-MOD
- BV
- J
- J-MOD
- F

NOTE: BV LIGHT FIXTURES IN THIS AREA OF THE PARKING LOT ARE MAXIMUM OF 25' IN HEIGHT.

**PLANT MATERIAL LIST**

KEY	COMMON NAME / SCIENTIFIC NAME	QUANTITY	SIZE	NOTES
A	DRAKE ELM <i>Ulmus parvifolia</i>	14	4" CAL.	B/B
B	LIVE OAK <i>Quercus virginiana</i>	79	3"-4" CAL.	B/B
C	BRADFORD PEAR <i>Pyrus calleryana</i> "Bradford"	26	4" CAL.	B/B-CONT.
D	CEDAR ELM <i>Ulmus crassifolia</i>	75	3" CAL.	SINGLE TRUNK B/B
E	CRAPE MYRTLE <i>Lagerstroemia indica</i> (PINK)	134/12	15/5 GAL. MULTI-TRUNK DWF. AS SHOWN	
F	WAX MYRTLE <i>Myrica cerifera</i>	54	4'-5'	5'-6" O.C.
G	ELAEAGNUS <i>Elaeagnus pungens</i>	677	5 GAL.	36" O.C.
H	ASIAN JASMINE <i>Trachelospermum asiaticum</i>	8405	4" CONT.	18" O.C.
J	SHORE JUNIPER <i>Juniperus conferta</i>	1362	5 GAL.	24" O.C.
K	LIRIOPE <i>Liriope muscari</i>	1335	4" CONT.	12" O.C.
L	DWARF YAUPON HOLLY <i>Ilex vomitoria</i> "Nana"	438	5 GAL.	24" O.C.
	HYDOMULCHED BERMUDA			IN ALL UNPAVED AREAS (EXCLUDING PLANTED BEDS)
	STEEL EDGER			IN GROUNDCOVER AND SHRUB BEDS ONLY
	BED PREPARATION			

- BUILDING NOTES:**
- COLOR OF BRICK TO BE AGREED ON BY SAM'S AND CITY COUNCIL
  - THERE SHALL BE A 5 FOOT HIGH PARAPET WALL AROUND THE TOP OF THE BUILDING
  - ACOUSTICAL SCREENING ON WESTERN MOST AIR CONDITIONING UNITS TO BE PROVIDED IF ACOUSTICAL STUDY INDICATES A BENEFIT TO PECAN SQUARE CONDOMINIUM DEVELOPMENT



DUNAWAY ASSOCIATES, Inc.

**DEVELOPMENT PLAN**

JAN. 23, 1992