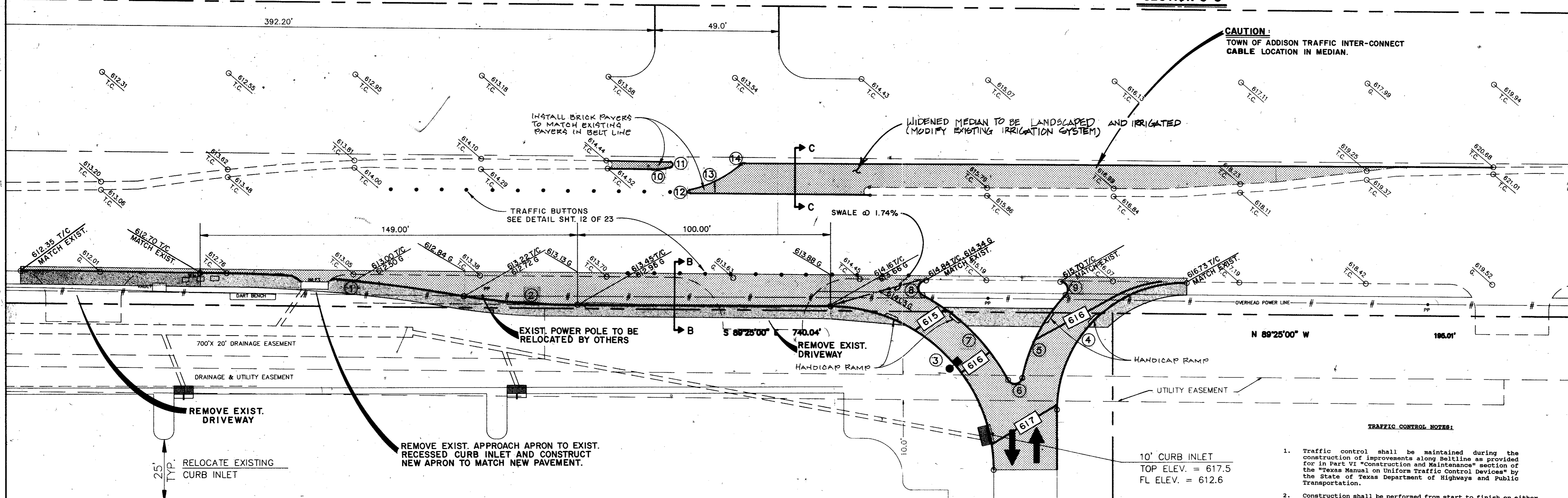
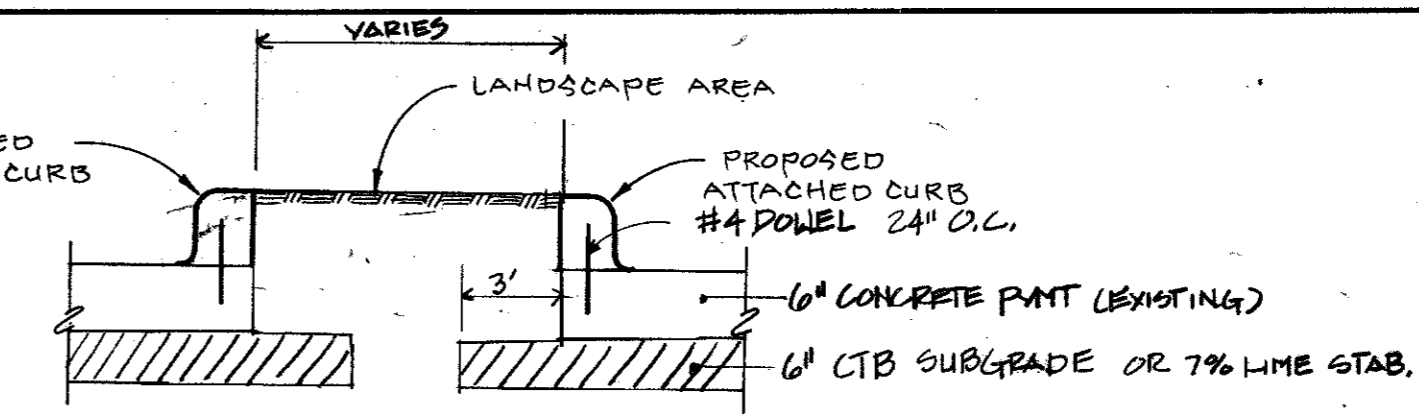


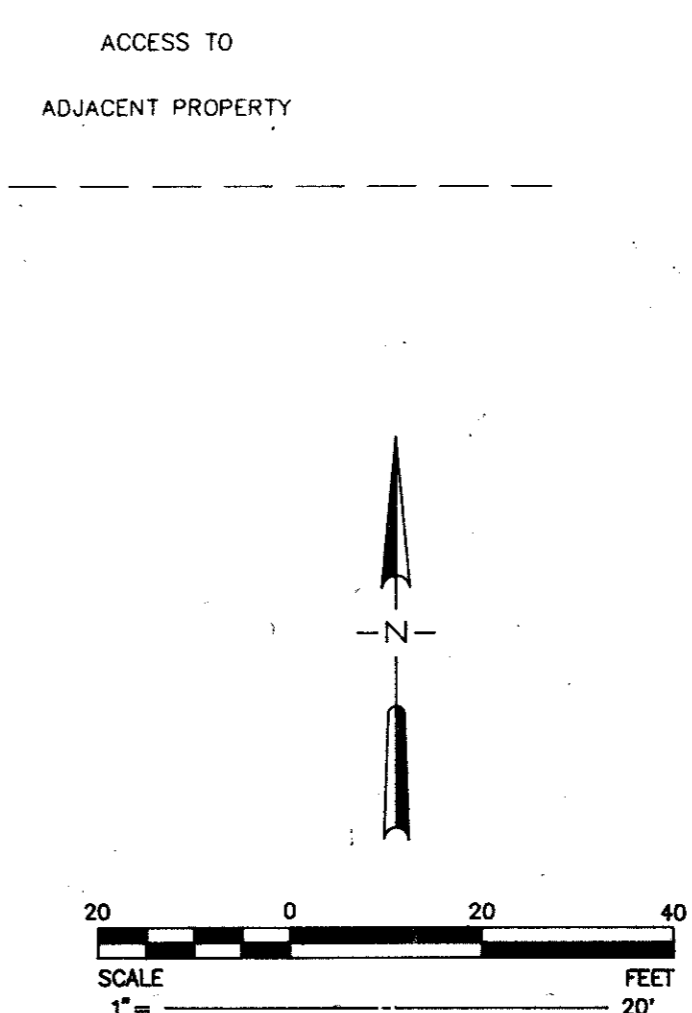
BELTLINE ROAD



CURB & MEDIAN CURVE DATA

1 Δ = 04°48'36" R = 800.00' T = 23.02' L = 50.02'	8 Δ = 153°04'15" R = 3.00' T = 12.53' L = 8.01'
2 Δ = 08°35'47" R = 300.00' T = 22.55' L = 45.01'	9 Δ = 34°32'52" R = 80.00' T = 24.88' L = 48.24'
3 Δ = 89°26'20" R = 65.00' T = 64.37' L = 101.47'	10 Δ = 140°7'13" R = 30.00' T = 3.72' L = 7.39'
4 Δ = 90°33'42" R = 50.00' T = 50.49' L = 79.03'	11 Δ = 165°03'42" R = 1.00' T = 7.63' L = 2.88'
5 Δ = 140°46'12" R = 3.00' T = 8.42' L = 7.37'	12 Δ = 165°15'08" R = 0.50' T = 3.86' L = 1.44'
6 Δ = 33°00'59" R = 65.00' T = 19.26' L = 37.48'	13 Δ = 30°54'54" R = 44.00' T = 12.17' L = 23.74'
7 Δ = 133°43'24" R = 3.00' T = 7.02' L = 7.00'	14 Δ = 45°35'34" R = 0.50' T = 0.21' L = 0.40'

- TRAFFIC CONTROL NOTES:**
- Traffic control shall be maintained during the construction of improvements along Beltline as provided for in Part VI "Construction and Maintenance" section of the "Texas Manual on Uniform Traffic Control Devices" by the State of Texas Department of Highways and Public Transportation.
 - Construction shall be performed from start to finish on either the median side or the outside lane (one side at a time). This is to minimize the effect of construction on any one traffic lane at a time.
 - Once begun, construction on either side shall be conducted as expeditiously as possible in order to complete the work.
 - Construction to Beltline shall be performed between the hours of 9:30 AM and 3:30 PM, Monday through Saturday. Sunday hours would be limited to daylight. The traffic lane effected by construction may be fully closed, utilizing the appropriate temporary devices, during these hours and must be re-opened during non-construction hours. When an edge of driving lane is a hazard during non-construction hours it shall be lined with flashing vertical panels spaced no greater than 40 feet apart.
 - Contractor shall provide name and a 24 hour telephone number of the individual responsible for maintenance of traffic control devices. Contractor shall have a demonstrated 30 minute response time for maintenance of traffic control devices.
 - Traffic control devices shall be covered or removed when not in use.



REVISION DESCRIPTION
No. DATE

1 1/24/92 ADDED TRAFFIC CONTROL NOTES & SECTION DETAIL
2 2/24/92 MODIFIED PAVEMENT & SECTION DETAIL
3 3/24/92 MODIFIED TRAFFIC CONTROL NOTES

STATE OF TEXAS
T.O. HUFFMINE
50981
REGISTERED PROFESSIONAL ENGINEER
DATE: 1/24/92

SHEET TITLE: **DECELERATION LANE + MEDIAN IMPROVEMENTS**
PROJECT TITLE: **WAL-MART SAM'S CLUB**
BELTLINE • MIDWAY
ADDISON, TEXAS

DUNAWAY ASSOCIATES, Inc.
ENGINEERS - PLANNERS - SURVEYORS
1501 W. WINDING CREEK BLVD. SUITE 100
FLORENCE, TEXAS 75761
PH: (817) 538-1131 FAX: (817) 538-1667

JOB No. 9102800
DESIGNED BY: TOH
CHECKED BY: TOH
DATE: JANUARY 1992
SCALE: 1"=20'
SHEET 22 OF 24 SHEETS

T.O. Huffmine
1/24/92
"AS BUILT PLANS"