

**BELTLINE ROAD**

REMOVE TOP OF EXIST DROP INLET AND RECONSTRUCT WITH MANHOLE ACCESS.

RELOCATE EXISTING CURB INLET

NOTE: REFER TO STORM DRAIN PROFILE SHEET 6A OF 24

CONNECT PROP. 36" TO EX. 54"  
F.L. 54" = 601.15  
F.L. 36" = 601.90

NOTE: REFER TO DECEL. LANE PLANS FOR DRIVE APPROACH GRADES

NOTE: SEE LANDSCAPE DETAIL SHEET FOR GRADES IN LANDSCAPE ISLAND

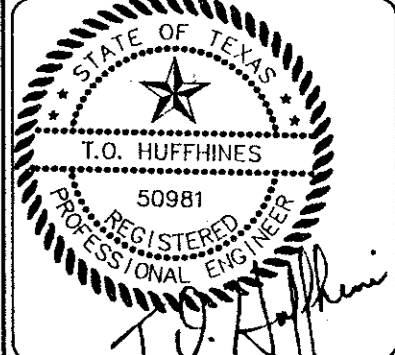
F.L. 48" = 603.62 F.L. 48" = 604.56  
F.L. 21" = 604.75 F.L. 18" = 605.81

REMOVE PLUG & CONNECT PROP. 21" TO EXIST. 48" R.C.P. CONST. NEW CONC. COLLAR  
FL 48" = 605.02, FL 21" = 607.27

NOTE: REFER TO DECEL. LANE PLANS FOR DRIVE APPROACH GRADES

**NOTE:**  
IF WARRANTED CONTRACTOR SHALL PROVIDE EROSION CONTROL BY MEANS OF SILT FENCING OR HAY BAILS TO INSURE SEDIMENT DOES NOT ENTER BELTLINE ROAD OR CITY OF ADDISON STORM DRAIN SYSTEM.

No.	DATE	REVISION DESCRIPTION
1	1/27/92	REVISED STORM DRAIN LOCATION & 36" DROP INLET TO MANHOLE
2	1/27/92	REVISED STORM DRAIN LOCATION & 36" DROP INLET TO MANHOLE
3	1/27/92	REVISED GRADES & IN CORNER OF SITE CHANGE CORNER NO. 4



DATE: 1-18-92

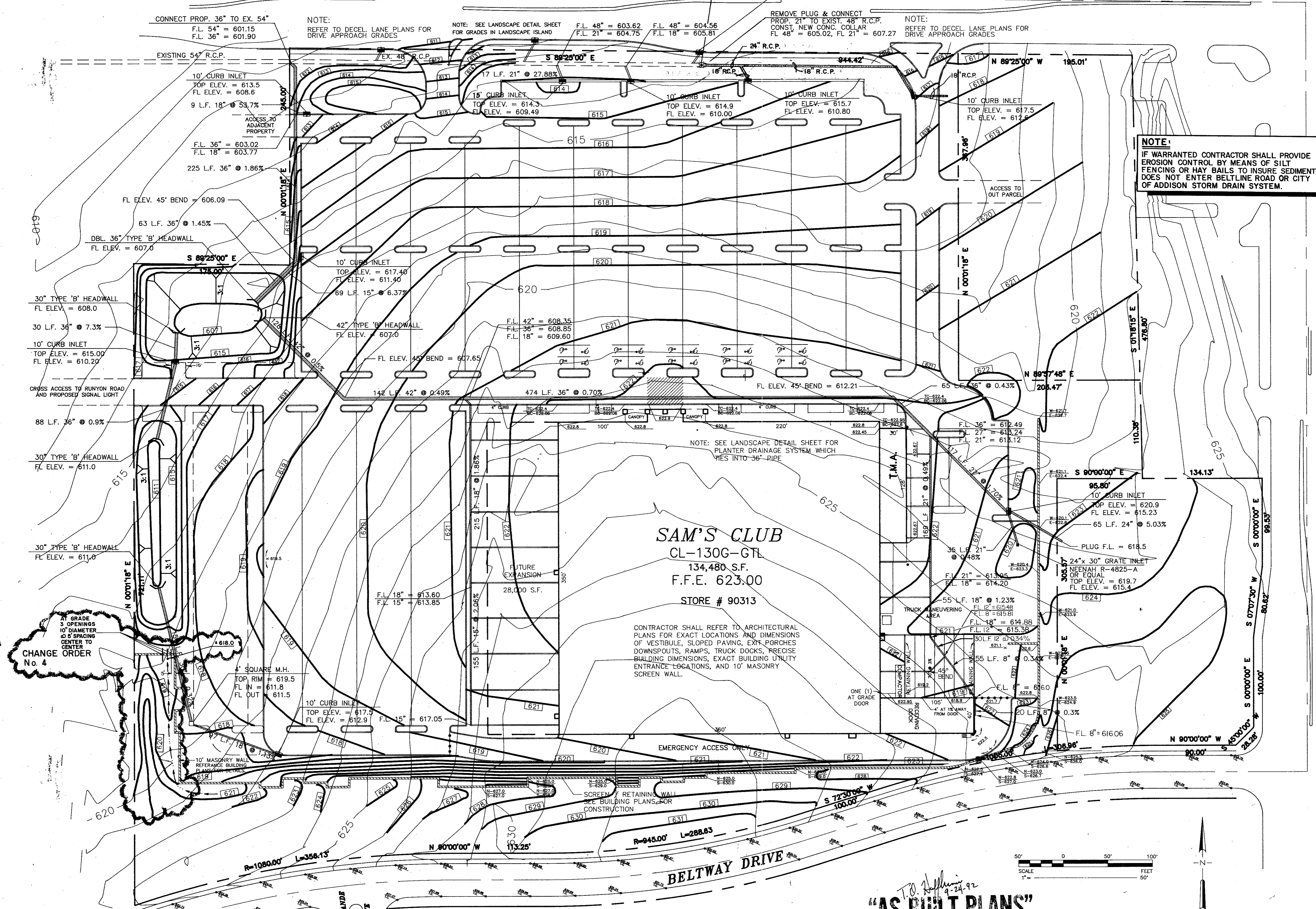
**GRADING AND DRAINAGE PLAN**

**WAL-MART**  
BELTLINE + MIDWAY  
ADDISON, TEXAS

**SAM'S CLUB**

**DUNAWAY ASSOCIATES, Inc.**  
ENGINEERS - PLANNERS - SURVEYORS  
1501 W. MARSHALL AVENUE, SUITE 100  
FORT WORTH, TEXAS 76104  
PH: (817) 338-1121 FAX: (817) 338-1125

JOB No.	9102800
DESIGNED BY:	T.S.G.
CHECKED BY:	T.O.H.
DATE:	FEB. 17, 1992
SCALE:	1" = 50'-0"
SHEET	4 OF 24 SHEETS



**SAM'S CLUB**  
CL-130G-GTL  
134,480 S.F.  
F.F.E. 623.00  
STORE # 90313

CONTRACTOR SHALL REFER TO ARCHITECTURAL PLANS FOR EXACT LOCATIONS AND DIMENSIONS OF VESTIBULE, SLOPED PAVING, EXIT PORCHES, DOWNSPOTS, RAMPS, TRUCK DOCKS, PRECISE BUILDING DIMENSIONS, EXACT BUILDING UTILITY ENTRANCE LOCATIONS, AND 10' MASONRY SCREEN WALL.

T.O. Huffines  
9-24-92  
**"AS BUILT PLANS"**