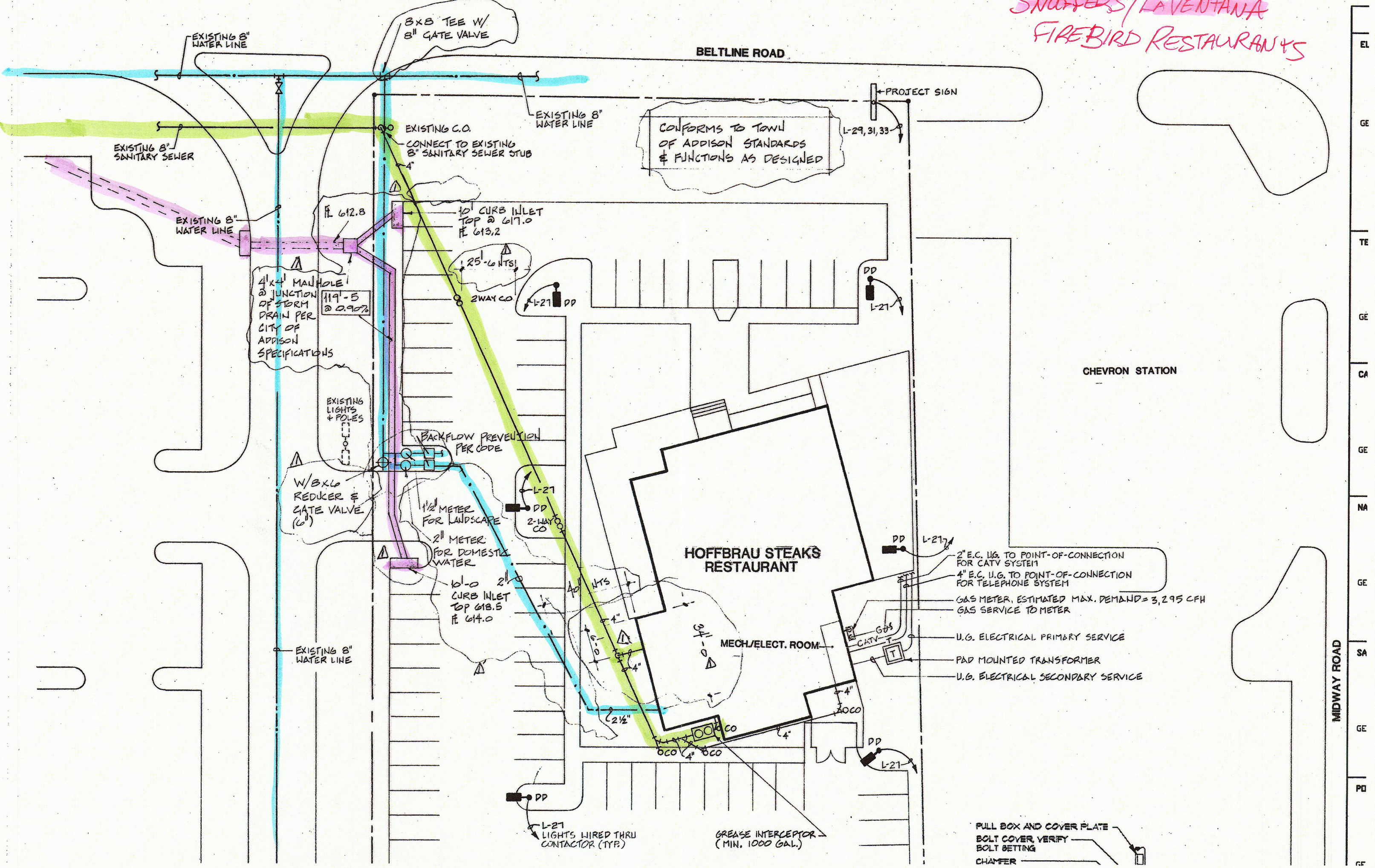


**SNUFFERS/LA VENTANA
FIREBIRD RESTAURANTS**



CHEVRON STATION

HOFFBRAU STEAKS RESTAURANT

MECH/ELECT. ROOM

- 2" E.C. U.G. TO POINT-OF-CONNECTION FOR CATV SYSTEM
- 4" E.C. U.G. TO POINT-OF-CONNECTION FOR TELEPHONE SYSTEM
- GAS METER, ESTIMATED MAX. DEMAND = 3,295 CFH
- GAS SERVICE TO METER
- U.G. ELECTRICAL PRIMARY SERVICE
- PAD MOUNTED TRANSFORMER
- U.G. ELECTRICAL SECONDARY SERVICE

PULL BOX AND COVER PLATE
BOLT COVER, VERIFY BOLT SETTING
CHAMFER

MIDWAY ROAD

EL
GE
TE
GE
CA
GE
NA
GE
SA
GE
PD
CF