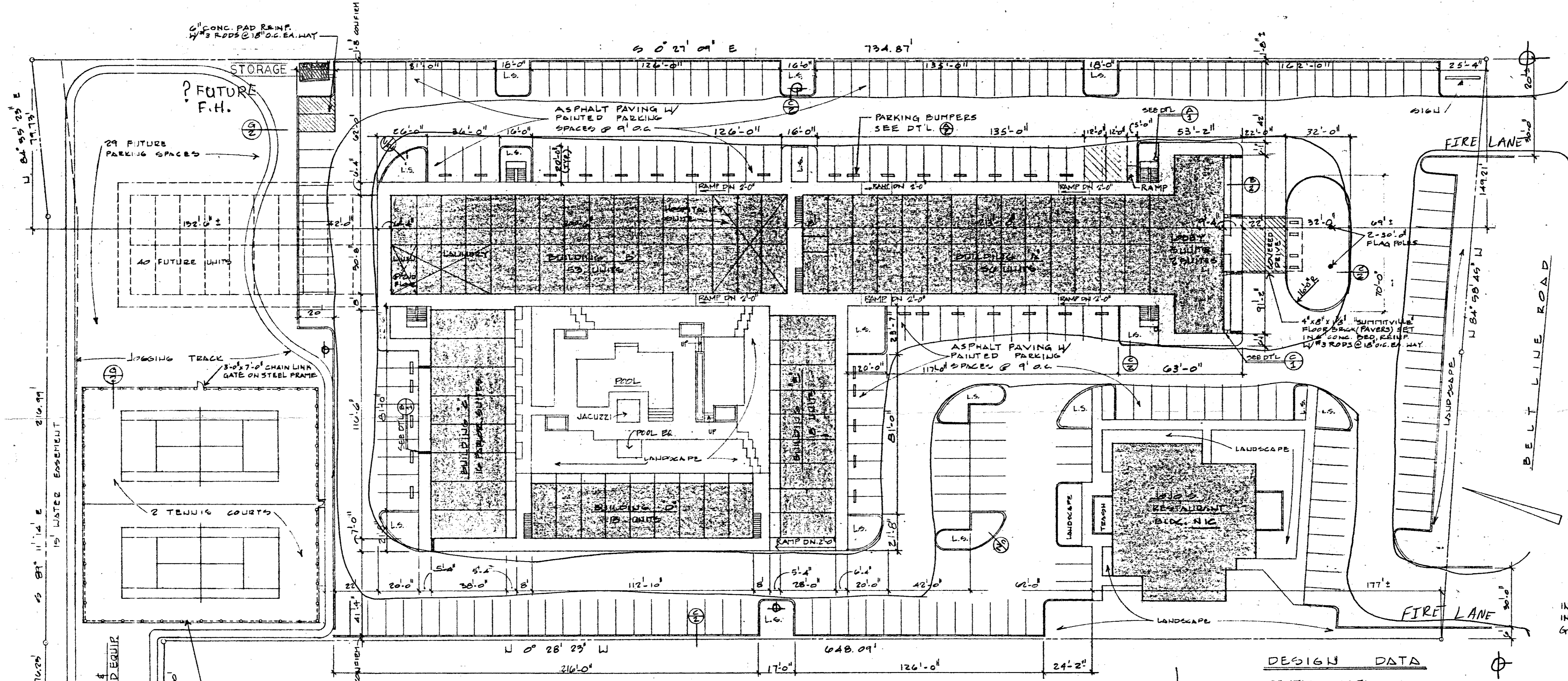
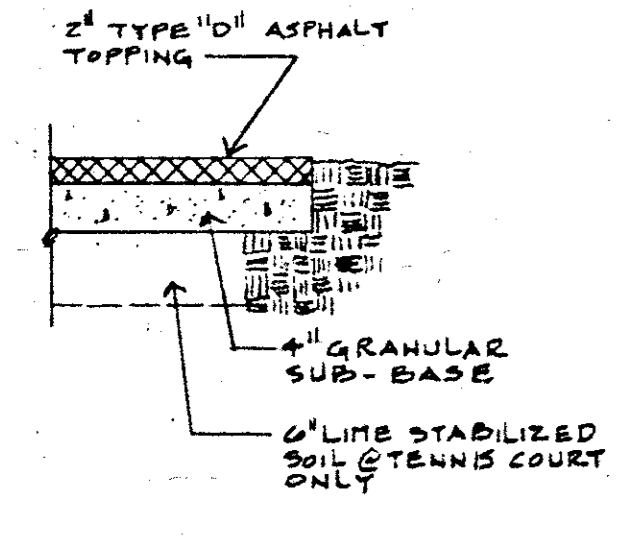


SCALE: 1/4" = 1'-0"



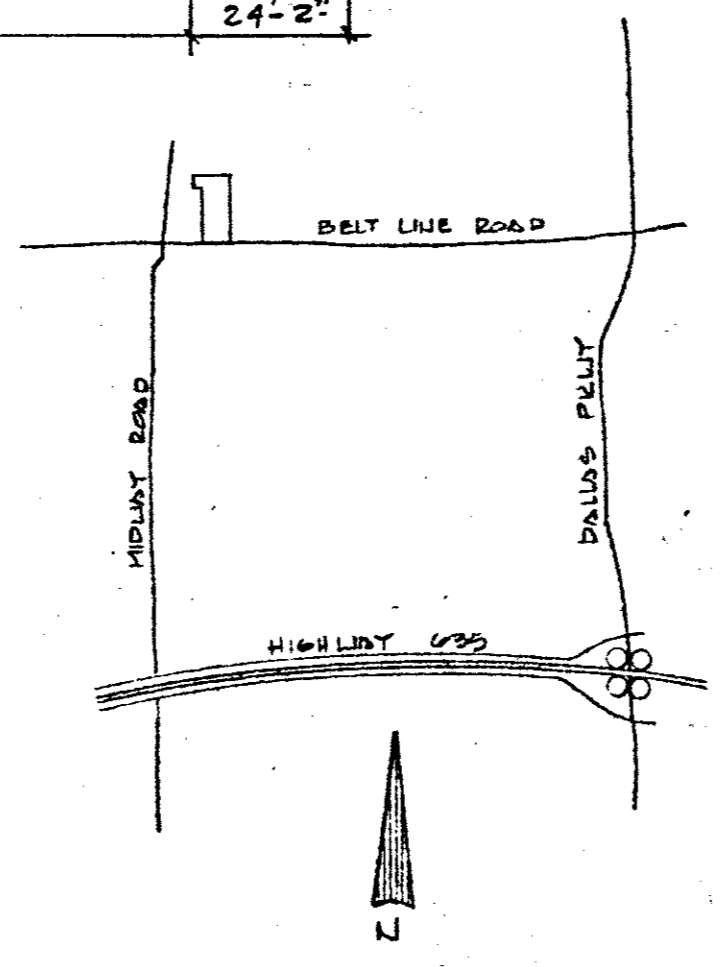
$\Delta = 2' 54.31"$
 $R = 2914.74'$
 $T = 74.0'$
 $L = 147.97'$

INSTALL TWO (2) DRIVE APPROACHES IN ACCORDANCE WITH THE PROPER GOVERNING AUTHORITIES



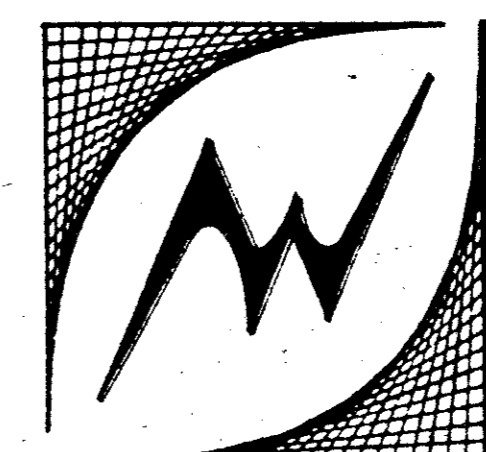
DETAIL TENNIS COURT & JOGGING TRACK
SCALE: 3/4" = 1'-0"

SITE PLAN
SCALE: 1" = 30'



DESIGN DATA

RENTAL UNITS:	
STD. UNITS & SUITES	116
PRIVATE BALCONY UNITS	36
PORCH ROOM SUITES	16
TOTAL	168
TOTAL PARKING SPACES: 232	
LAND AREA: 182,680 sq. ft. = 4.19 ACRES - MOTOR HOTEL	
36,540 sq. ft. = .84 ACRES - RESTAURANT	



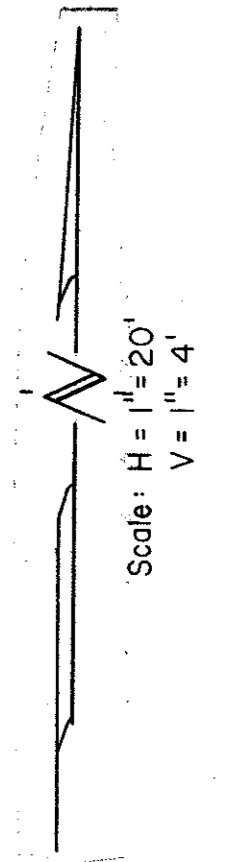
A RODEAWAY INN
ADDISON, TEXAS

ART WILLIAMS JR
AND ASSOCIATES ARCHITECTS

ROBERT BRUNE - ASSOCIATE ARCHITECT
2880 L.B.J. FREEWAY #330 DALLAS

FOLIO No. 601
DATED FEB 15, 1980
DRAWN DTD
REVISED

SHEET No. **2**
OF 31 SHTS



St. Louis & Southwestern R.R.

CONCRETE ENCASUREMENT TO BE USED WHEN PROPOSED
SANITARY SEWER CROSES EXISTING WATER OR
SANITARY SEWER MAINS

35 L.F. TO BE PLACED BY OTHER THAN OPEN CUT.

15' Easement For 54" City of Dallas Water Main

RODEWAY INN AND JOJO'S PLUMBING
CONNECTIONS BY OTHERS

0100 Line A - Conn.
To Exist. 4' Ø Sid. M.H.

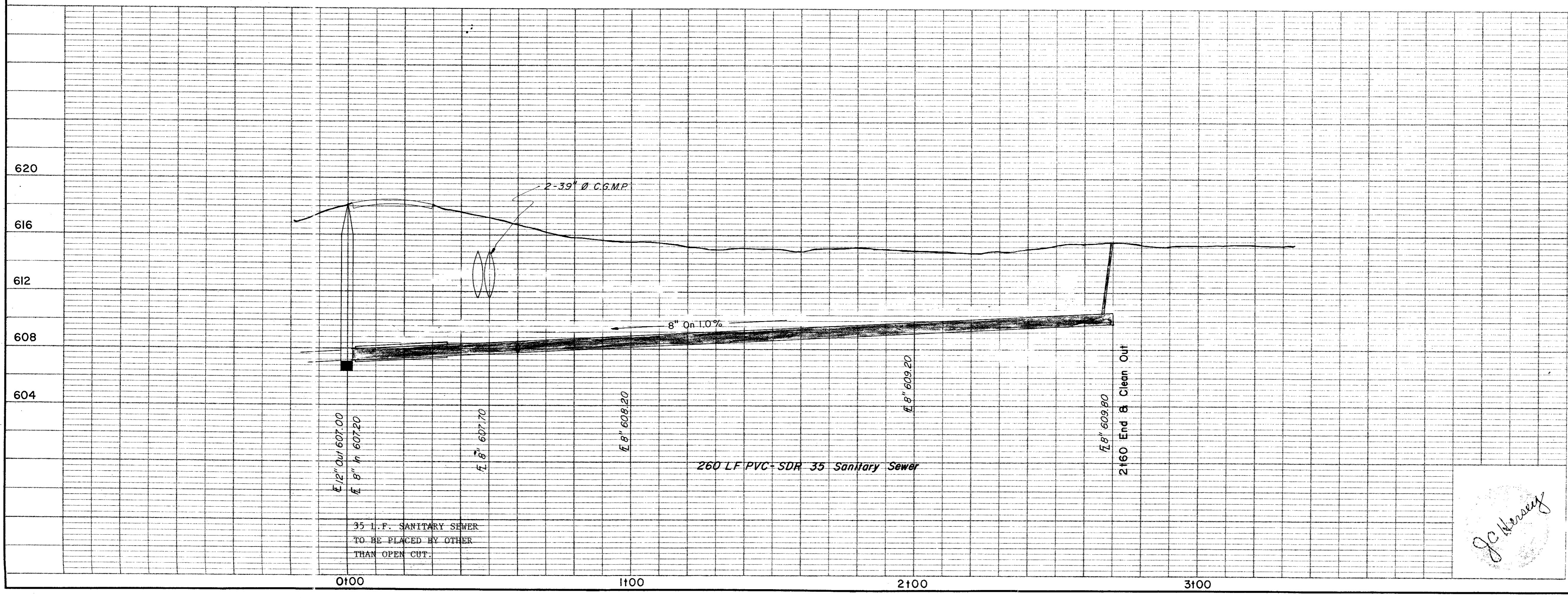
STATION 0+60 CONSTRUCT 6" STUBOUT
CONNECT TO EXISTING 5" PRIVATE SEWER
LATERAL. PLUG DOWNSTREAM 5" PRIVATE
SEWER LATERAL AND ABANDON

San. Sewer Curve Data

Δ = 20°
R = 150'
L = 52.36'
T = 26.52'

- NOTE: 1. All work to be performed in accordance with City of Addison Standards and Specifications
2. Sanitary Sewer line embedment shall be 6" sand cushion on all sides of pipe. Remaining trench shall be backfilled and compacted with "select" material in accordance with City of Addison Standards and Specifications.
3. Sanitary Sewer Cleanouts shall have 18" X 18" X 6" Concrete pad poured around top.

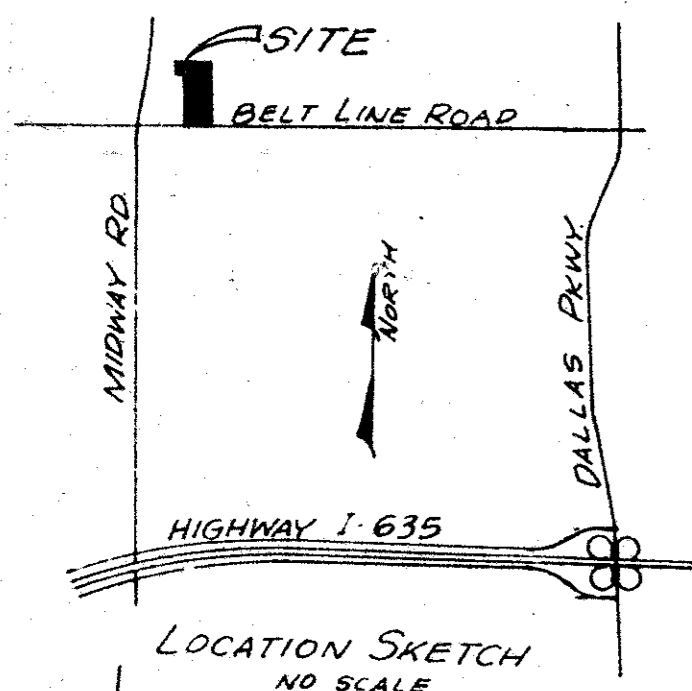
BENCH MARK: "□" cut in top of curb at N.W. corner of parking for Gulf Oil Company Service Station at S.W. corner of Midway Road and Belt Line Road
ELEV: 624.32



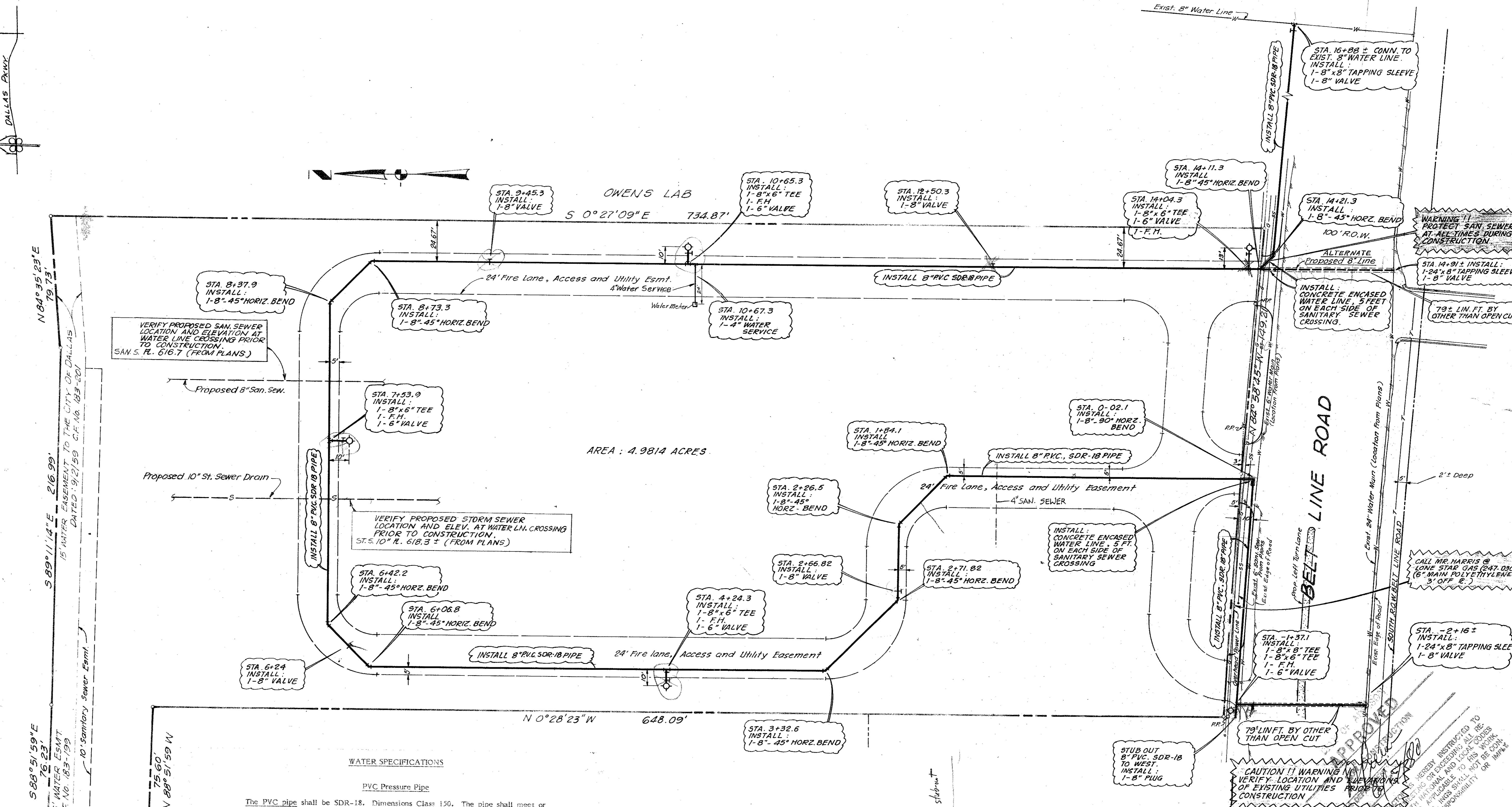
CITY OF ADDISON
APPROVED
FOR CONSTRUCTION
BUILDING DEPARTMENT
DATE: 6-22-80
CONTRACTOR IS HEREBY INSTRUCTED TO EXERCISE CARE IN MEETING OR EXCEEDING ALL REQUIREMENTS OF BOTH NATIONAL AND LOCAL CODES AND ORDINANCES APPLICABLE TO HIS WORK. APPROVAL OF THESE DRAWINGS SHALL NOT BE CONSTRUED TO RELIEVE RESPONSIBILITY OR LIABILITY TO SUCH CODES.

J.C. Hersey

NO.	REVISION	BY	DATE
SANITARY SEWER MAIN ROADWAY INN ADDISON, DALLAS COUNTY, TEXAS HERSEY AND ASSOCIATES CONSULTING ENGINEERS DALLAS, TEXAS			
DESIGNED - J.C.H.	DRAWN - S.M.M.	DATE - 2/5/80	
APPROVED - J.C.H.	CHECKED - J.C.H.	SCALE - AS NOTED	SHEET 1 OF 1



ST. LOUIS & SOUTHWESTERN RR.



WATER SPECIFICATIONS

- PVC Pressure Pipe**
- The PVC pipe shall be SDR-18. Dimensions Class 150. The pipe shall meet or exceed requirements of AWWA C-900-73. PVC pipe with cast iron outside dimensions and with rubber ring joints. PVC water pipe shall be listed by Underwriters Laboratories and approved for use in cities and towns of Texas by the State Board of Insurance. The rigid PVC pipe shall bear the seal of approval for "NSF" mark of the National Sanitation Foundation Testing Laboratory for potable water pipe. Provisions must be made for contraction and expansion at each joint with a rubber ring, and an integral thickened bell as part of each joint. Pipe and fittings must be assembled with a non-toxic lubricant. Pipe shall be made from NSF approved Class 12454-A or B PVC Pipe Compound conforming to ASTM resin specification D1784.
- Joints and Fittings** - Fittings shall be mechanical joint or rubber ring slip joint cast iron fittings.
- Pipe Bedding**
- Bedding material for water and sewer pipe shall be sand. Sand shall be placed six inches below the pipe, around the pipe, and six inches above the pipe.
- Tracer**
- A No. 12 coated copper wire or metallic tracer tape equivalent shall be placed in the trench over all water lines.
- Fire Hydrants and Gate Valves**
- Mueller or Clow Gate valves shall be used.
 - Mueller Fire hydrants, Centurion model shall be used.
 - All Fire Hydrants to be no more than five feet or less than three feet behind curb.
 - All material and Workmanship to conform to the requirements set forth in the City of Addison's specifications for Water Lines.

A WATER LINE FOR RODEWAY INN

AN ADDITION TO THE CITY OF ADDISON, TEXAS
OUT OF THE
EDWARD COOK SURVEY-ABST. 326
DALLAS COUNTY, TEXAS

FOR:
VANTAGE PROPERTIES, INC.

BENCH MARK: Railroad Spike in Power Pole
North side of Belt Line Road. Directly across
from Victoria Station.
Elevation: 631.41

ALBERT H. HALFF ASSOCIATES INC. ENGINEERS-DALLAS
SCALE 1" = 30'
A.V.O. 6587W
APRIL, 1980

Revised 6/17/80

APPROVED

CONSTRUCTION OF THIS PROJECT SHALL BE STRICTLY IN ACCORDANCE WITH THE SPECIFICATIONS AND LOCAL CODES. THE CONTRACTOR SHALL BE RESPONSIBLE FOR OBTAINING ALL NECESSARY PERMITS AND FOR THE PROTECTION OF EXISTING UTILITIES AND STRUCTURES. THE CONTRACTOR SHALL BE RESPONSIBLE FOR THE PROTECTION OF ALL UTILITIES AND STRUCTURES. THE CONTRACTOR SHALL BE RESPONSIBLE FOR THE PROTECTION OF ALL UTILITIES AND STRUCTURES.