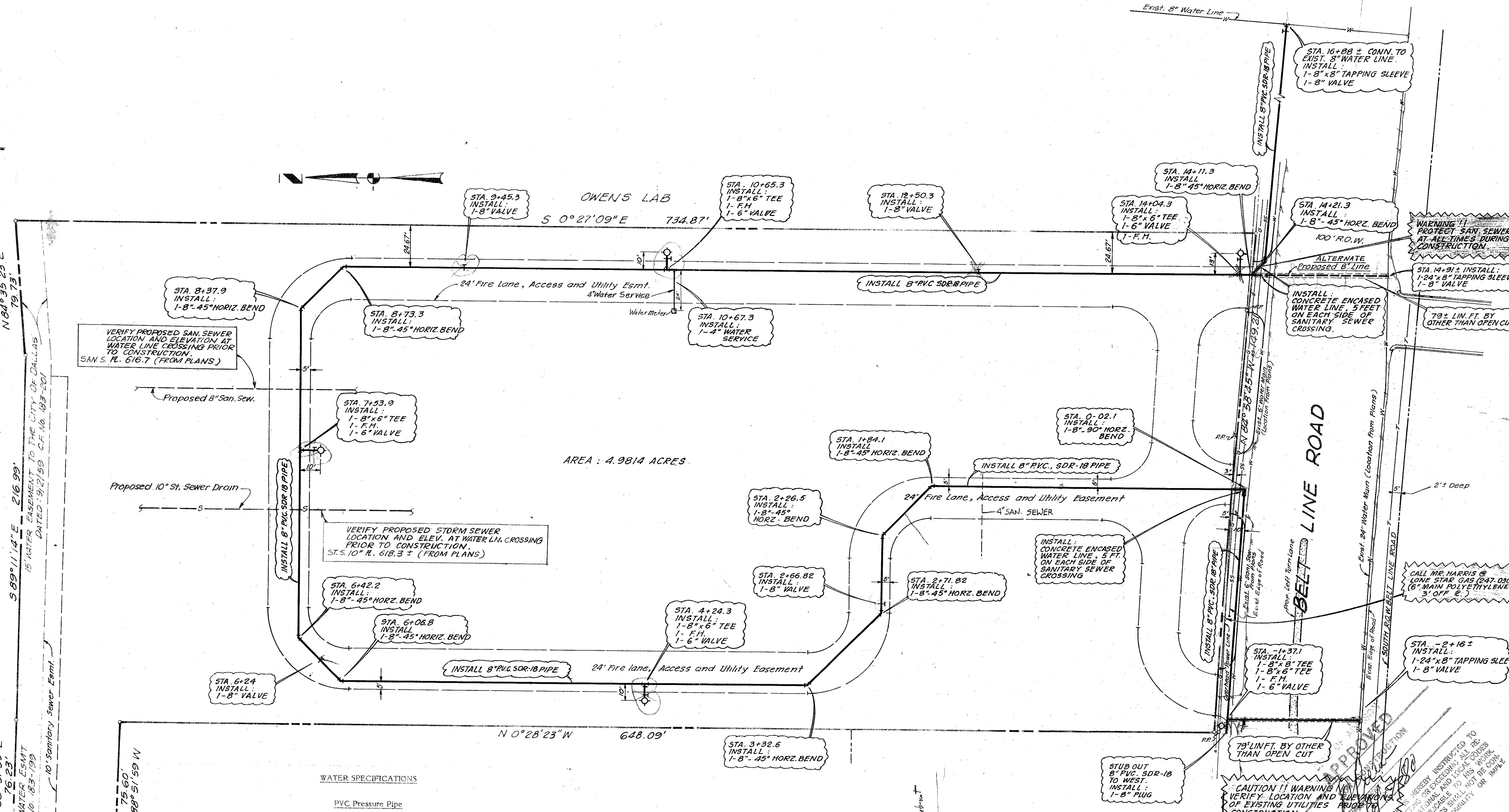


ST. LOUIS & SOUTHWESTERN RR.

Point Of Beginning
 89°41'00"E 195.00'
 588°51'59"E 76.23'
 589°11'14"E 216.99'
 15' WATER EASEMENT TO THE CITY OF DALLAS
 DATED: 9/2/59 C.F. No. 183-20
 10' Sanitary Sewer Easmt.
 75.60'
 N 88° 51' 59" W



WATER SPECIFICATIONS

PVC Pressure Pipe

The PVC pipe shall be SDR-18. Dimensions Class 150. The pipe shall meet or exceed requirements of AWWA C-900-73. PVC pipe with cast iron outside dimensions and with rubber ring joints. PVC water pipe shall be listed by Underwriters Laboratories and approved for use in cities and towns of Texas by the State Board of Insurance. The rigid PVC pipe shall bear the seal of approval for "NSF" mark of the National Sanitation Foundation Testing Laboratory for potable water pipe. Provisions must be made for contraction and expansion at each joint with a rubber ring, and an integral thickened bell as part of each joint. Pipe and fittings must be assembled with a non-toxic lubricant. Pipe shall be made from NSF approved Class 1245A-A or B PVC Pipe Compound conforming to ASTM resin specification D1784.

Joints and Fittings - Fittings shall be mechanical joint or rubber ring slip joint cast iron fittings.

Pipe Bedding

Bedding material for water and sewer pipe shall be sand. Sand shall be placed six inches below the pipe, around the pipe, and six inches above the pipe.

Tracer

A No. 12 coated copper wire or metallic tracer tape equivalent shall be placed in the trench over all water lines.

Fire Hydrants and Gate Valves

- Mueller or Clow Gate valves shall be used.
- Mueller Fire hydrants, Centurion model shall be used.
- All Fire Hydrants to be no more than five feet or less than three feet behind curb.
- All material and Workmanship to conform to the requirements set forth in the City of Addison's specifications for Water Lines.

**A WATER LINE
 FOR RODEWAY INN**

AN ADDITION TO THE CITY OF ADDISON, TEXAS
 OUT OF THE
 EDWARD COOK SURVEY-ABST. 326
 DALLAS COUNTY, TEXAS

FOR:
VANTAGE PROPERTIES, INC.

BENCH MARK: Railroad Spike in Power Pole
 North side of Belt Line Road. Directly across
 from Victoria Station.
 Elevation: 631.41

ALBERT H. HALFF ASSOCIATES INC. ENGINEERS-DALLAS
 SCALE 1" = 30'
 A.V.O. 6587W APRIL, 1980

Revised 6/17/80

APPROVED

CONSTRUCTION SHALL BE IN ACCORDANCE WITH THE SPECIFICATIONS AND CONDITIONS OF THE CONTRACT AND LOCAL ORDINANCES AND REGULATIONS. THE CONTRACTOR SHALL BE RESPONSIBLE FOR OBTAINING ALL NECESSARY PERMITS AND APPROVALS FROM THE CITY OF ADDISON AND THE CITY ENGINEER. THE CONTRACTOR SHALL BE RESPONSIBLE FOR THE PROTECTION OF ALL EXISTING UTILITIES AND STRUCTURES. THE CONTRACTOR SHALL BE RESPONSIBLE FOR THE PROTECTION OF ALL EXISTING UTILITIES AND STRUCTURES. THE CONTRACTOR SHALL BE RESPONSIBLE FOR THE PROTECTION OF ALL EXISTING UTILITIES AND STRUCTURES.