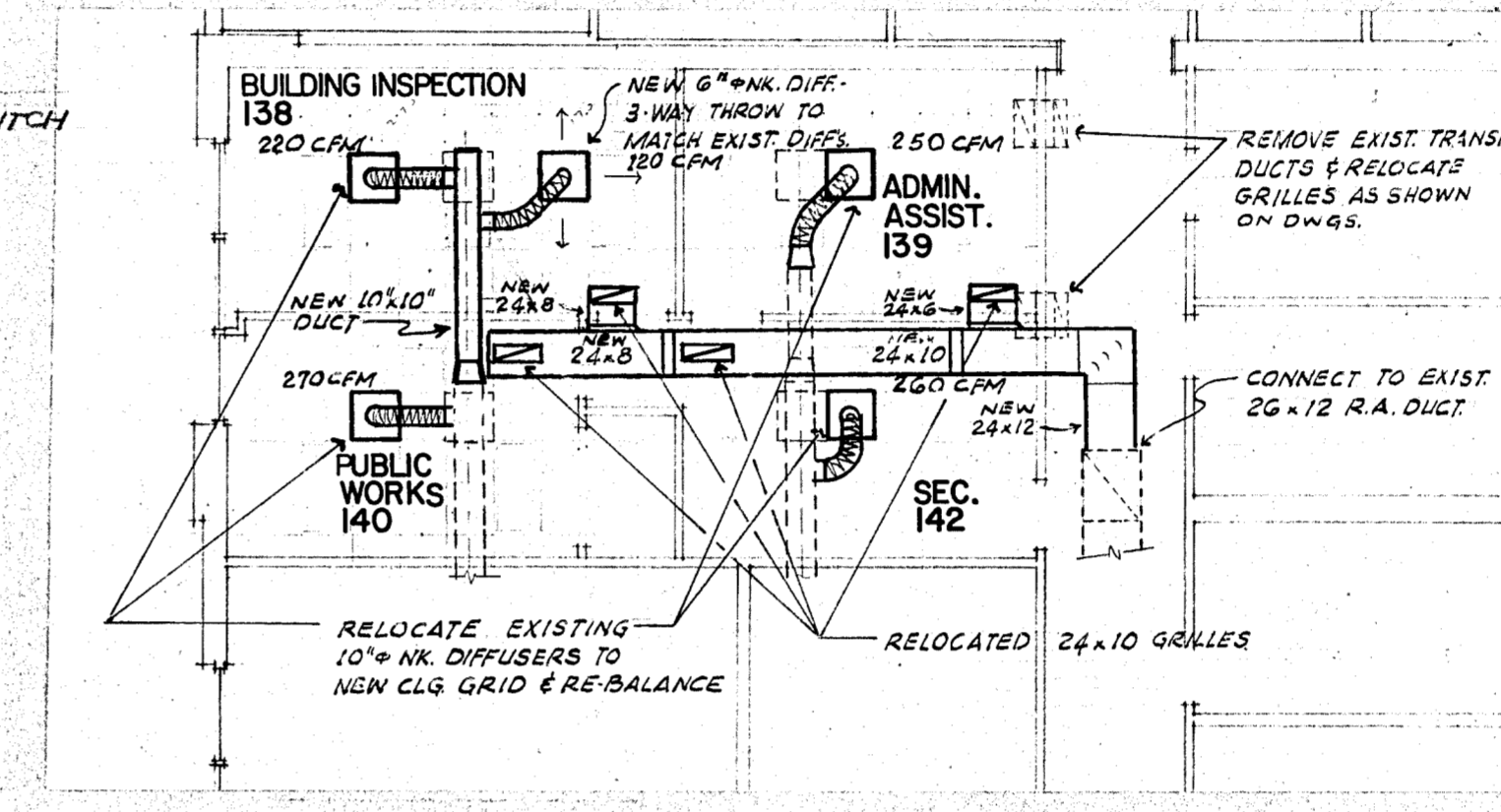


- ELECTRICAL SYMBOLS**
- FLUORESCENT FIXTURES - SCHEDULED
  - INCANDESCENT FIXTURES - SCHEDULED
  - SINGLE POLE SWITCH
  - 3-WAY SWITCH
  - 4-WAY SWITCH
  - SINGLE POLE SWITCH W/ LOCKING COVER
  - DIMMER SWITCH

INDICATES STUDS & ETR. ED. CONTINUOUS TO DECK  
 INDICATES STUDS CONT. TO DECK / ETR. ED. CONT. TO 4" ABOVE ADJACENT CEILING  
 INDICATES STUDS & ETR. ED. TO BOTTOM OF 2x4 GRID



**1002 HVAC Alteration Plan - Exist. Bldg.**  
 1/8" = 1'-0"

THESE ROOMS EXISTING CEILING TO REMAIN - RELOCATE FIXTURES

RELOCATE EXIST. ELEC. SERVICE

NEW & EXIST. ELEC. PANELS & EQUIP. LOCATION

- Notes:**
1. CEMENT PLASTER SOFFIT WITH STUCCO FINISH, MATCH EXISTING COLOR AND TEXTURE.
  4. 2x4 SUSPENDED ACoustICAL CEILING.
  4. GYP. BOARD CEILING.
  5. CONCRETE CEILING.
  7. FURF-DOWN ABOVE CABINET.
  10. SUPPLY AIR DIFFUSER, TYPICAL.
  11. EXISTING STUCCO SOFFIT.

**LIGHTING FIXTURE SCHEDULE**

- A 2' x 4', four-lamp, recessed fluorescent grid-type with framed 0.120" prismatic acrylic lens in flush steel door
- A2 Same as Type A except two-lamp
- A3 Same as Type A except fixture shall be unswitched and connected from existing exit sign switch
- B Recessed incandescent open aperture downlight with parabolic clear alzak parabolic reflector and 150 watt A21 lamp
- C Recessed incandescent wall wash unit with clear alzak reflector and 150 watt A21 lamp
- D Indestructible incandescent ceiling mounted drum fixture with two 75 watt lamps
- E Rapid start fluorescent strip light, two-lamp, four-foot, surface mounted
- F Incandescent lavatory bracket, white ceramic lens with two 50 watt lamps
- G Recessed open aperture incandescent unit with 150 watt colortone R40 lamp for damp location (lamps shall match existing building lamps)
- H Emergency (battery powered) unit 8" x 24" to fit flush in grid ceiling with fully sealed longlife battery and two cylindrical lighting units and two remote exit signs
- I Surface mounted incandescent with gasket lens and 100 watt lamp
- J Fluorescent wrap-around wall-mounted fixture, four-foot long, two lamp, acrylic lens

**1001 Reflected Ceiling Plan**  
 1/8" SCALE



Additions and Alterations to the  
**Addison Municipal Center**  
 Addison, Texas

**The O'Brien Corporation**  
 ARCHITECTURE + PLANNING  
 ONE NORTH PARK EAST, SUITE 116  
 DALLAS, TEXAS 75231  
 214 696 1997