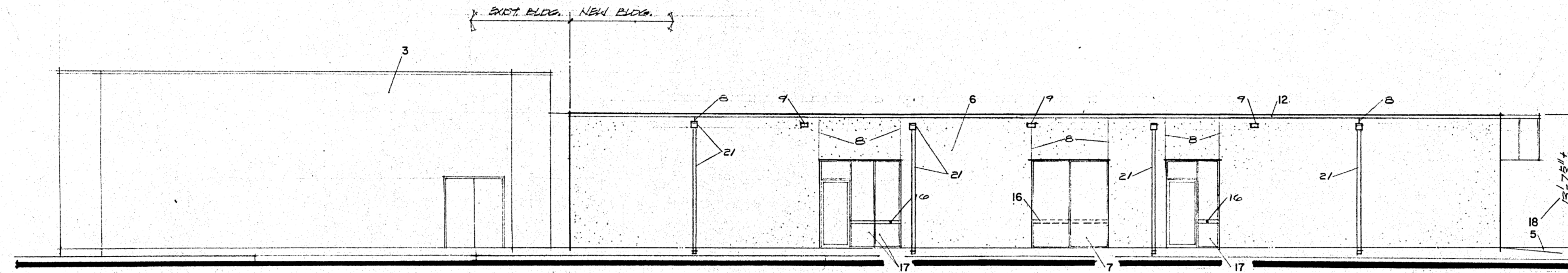
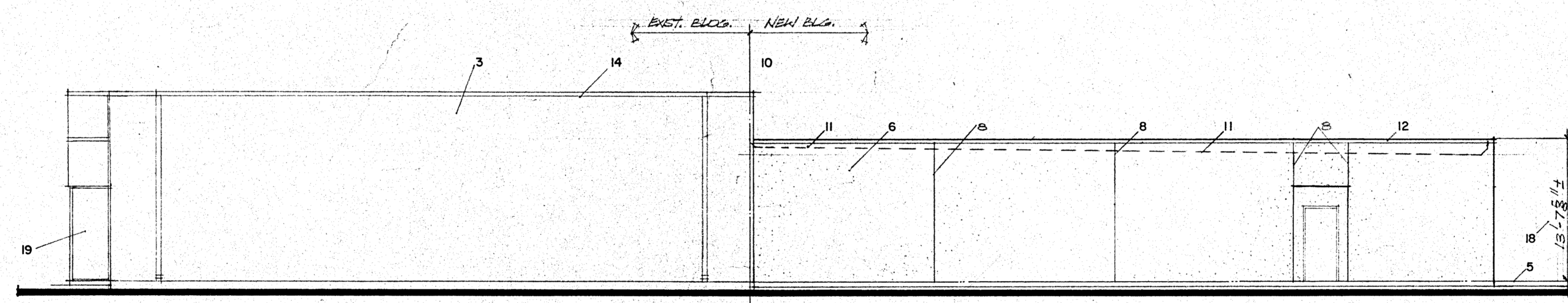


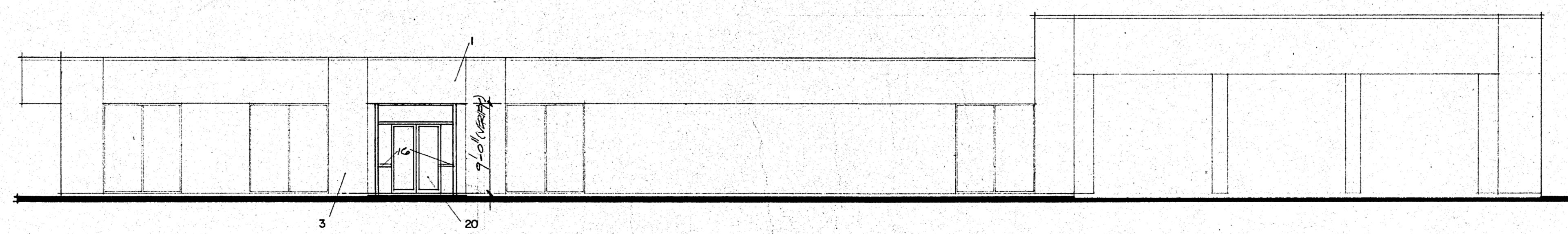
**404 East Elev.**  
1/8" SCALE



**403 South Elev.**  
1/8" SCALE



**402 West Elev.**  
1/8" SCALE



**401 North Elev.**  
1/8" SCALE

**Notes:**

1. EXISTING CANOPY.
2. EXISTING CLEAR PLATE GLASS IN ALUMINUM STORE FRONT.
3. EXISTING PLASTER ON MASONRY WALL.
4. APARTIS BUILDING BEYOND.
5. FINISH FLOOR LINE.
6. CEMENT PLASTER WITH STUCCO FINISH ON 5 1/2" METAL STUDS, 1/2" GYP SHEATHING AND SELF-FURRING METAL LATH. MATCH EXISTING COLOR AND TEXTURE.
7. 1/4" CLEAR PLATE GLASS IN ALUMINUM FRAME.
8. PLASTER CONTROL JOINTS.
9. OVER FLOW SCUPPER.
10. BUILDING LINE OF EXISTING BUILDING.
11. ROOF LINE.
12. METAL COPING, MATCH EXISTING SIZE AND COLOR.
13. STANDING SEAM METAL CANOPY, MATCH EXISTING COLOR, STYLE, AND SEAM SPACING.
14. EXISTING GUTTER AND DOWNSPOUT TO REMAIN.
15. EXISTING GUTTER AND DOWNSPOUT TO BE REMOVED FROM SOUTH WALL OF EXISTING BUILDING.
16. 1"x4" ALUMINUM FILING - 30" ABOVE FINISHED FLOOR.
17. 1/2" TEMPERED PLATE GLASS.
18. VERIFY PARAPET HEIGHT OF EXISTING BUILDING.
19. NEW STORE FRONT AT ENTRY VESTIBULE BEYOND. (ALTERNATE ONLY)
20. NEW STORE FRONT DOORS AT ENTRY VESTIBULE. (ALTERNATE ONLY)
21. METAL DOWNSPOUT & COLLECTION BOXES.



Additions and Alterations to the  
**Addison Municipal Center**  
Addison, Texas

**The O'Brien Corporation**  
ARCHITECTURE + PLANNING  
ONE NORTH PARK EAST, SUITE 116  
DALLAS, TEXAS 75231  
214 696 1997