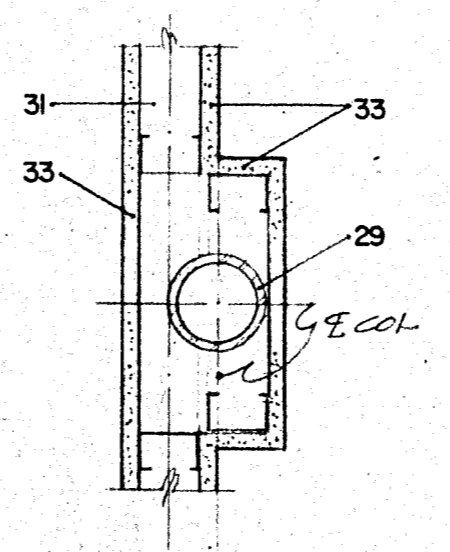
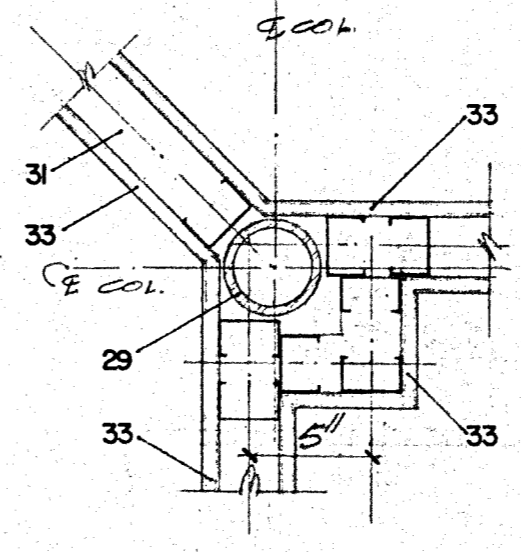


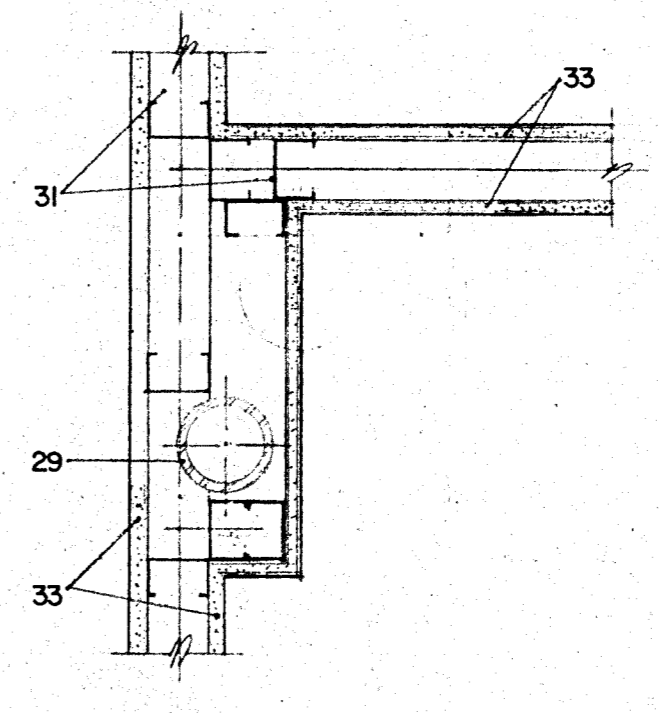
73 Detail
8" SCALE



712 Det.
1 1/2" SCALE



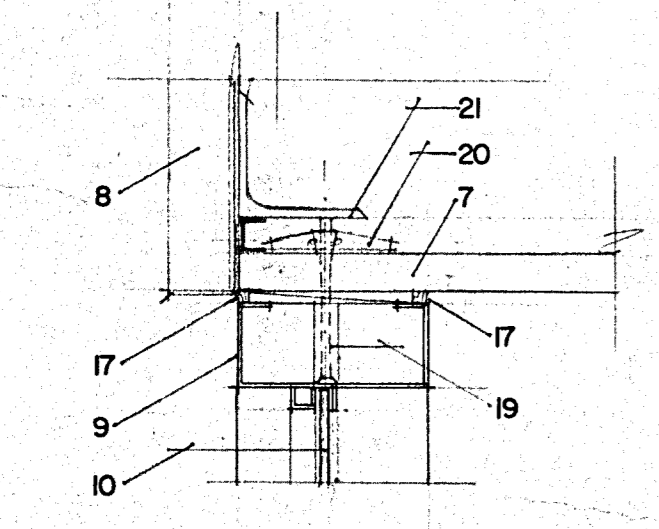
711 Det.
1 1/2" SCALE



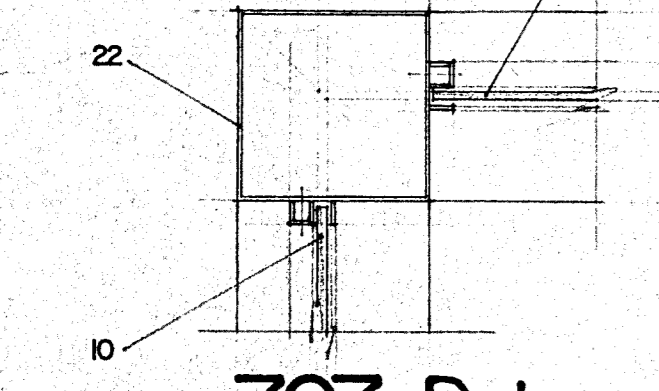
710 Det.
1 1/2" SCALE

- Notes:
- 1.) EXISTING CANOPY TO REMAIN.
 - 2.) EXISTING MASONRY TO REMAIN.
 - 3.) EXISTING TRANSOM TO REMAIN.
 - 4.) EXISTING DOOR AND FRAME TO REMAIN.
 - 5.) EXISTING MASONRY AND PLASTER WALL TO REMAIN.
 - 6.) EXISTING FOUNDATION TO REMAIN.
 - 7.) EXISTING PLASTER SOFFIT TO REMAIN.
 - 8.) EXISTING STANDING SEAM CANOPY TO REMAIN.
 - 9.) 1 3/4" X 4" CLEAR ANODIZED ALUMINUM FIN TUBE STOREFRONT.
 - 10.) 1/4" CLEAR PLATE GLASS.
 - 11.) 1/4" CLEAR TEMPERED GLASS IN DOOR.
 - 12.) NOT USED.
 - 13.) CONCRETE FLOOR SLAB, SEE STRUCTURE.
 - 14.) CONCRETE GRADE BEAM, SEE STRUCTURE.
 - 15.) CONCRETE WALK.
 - 16.) 1/2" PREMOULDED EXPANSION FILLER.
 - 17.) CALK.
 - 18.) CENTER LINE OF EXISTING AND NEW DOORS.
 - 19.) 1/2" DIA. TUBE SPACER.
 - 20.) 3/16" TOGGLE BOLT, PENETRATE AND ANCHOR HEAD SECTION TO PLASTER SOFFIT.
 - 21.) EXISTING ANGLE, VERIFY.
 - 22.) 4X4 ANODIZED ALUMINUM CORNER POST.
 - 23.) OMITTED.
 - 24.) 3/16" DIA. BOLT AND EXPANSION SHIELD.
 - 25.) ALUMINUM THRESHOLD EQUAL TO PEMCO 180 AV. SET IN FULL BED OF GROUT.
 - 26.) CLEAR ANODIZED ALUMINUM FLASHING.
 - 27.) OMITTED.
 - 28.) SET SILL SECTION IN FULL BED OF SEALANT.
 - 29.) STEEL COLUMN, SEE STRUCTURAL.
 - 30.) #3 X 2'-0" @ 16" O.C. - WRAP ONE END WITH FELT.
 - 31.) 2 1/2" METAL STUDS AT 24" O.C.
 - 32.) FULL THICK BATT INSULATION.
 - 33.) 5/8" GYP. BOARD.
 - 34.) #3 @ 12" O.C. EA. WAY.
 - 35.) #3 X 2'-0" @ 16" O.C.
 - 36.) #3 X 1'-0" X 1'-6" @ 16" O.C.
 - 37.) 2 - #6 CONT. TOP & BOTTOM WITH #3 O.C.
 - 38.) PIER.
 - 39.) GRADE BEAM.

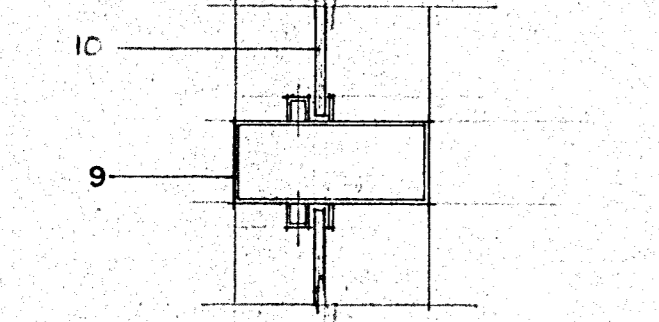
ADD ALTERNATE NO. 1 SHALL INCLUDE DETAILS 701, 702, 703, 704, 705, 706, 707, 708, & 709.



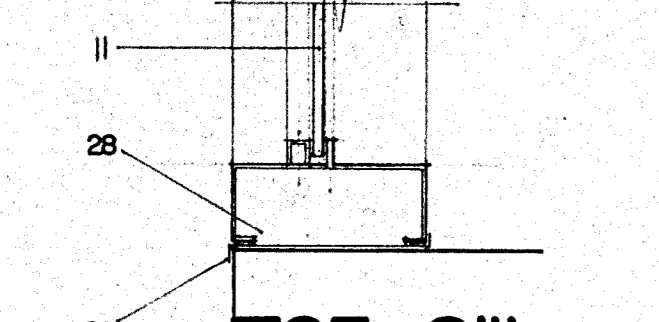
709 Head
3" SCALE



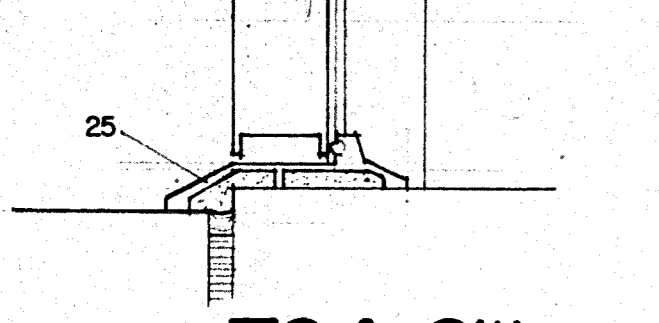
707 Det.
3" SCALE



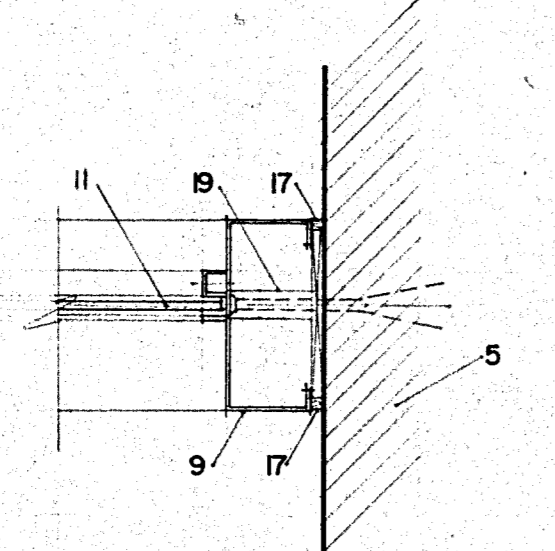
706 Mul.
3" SCALE



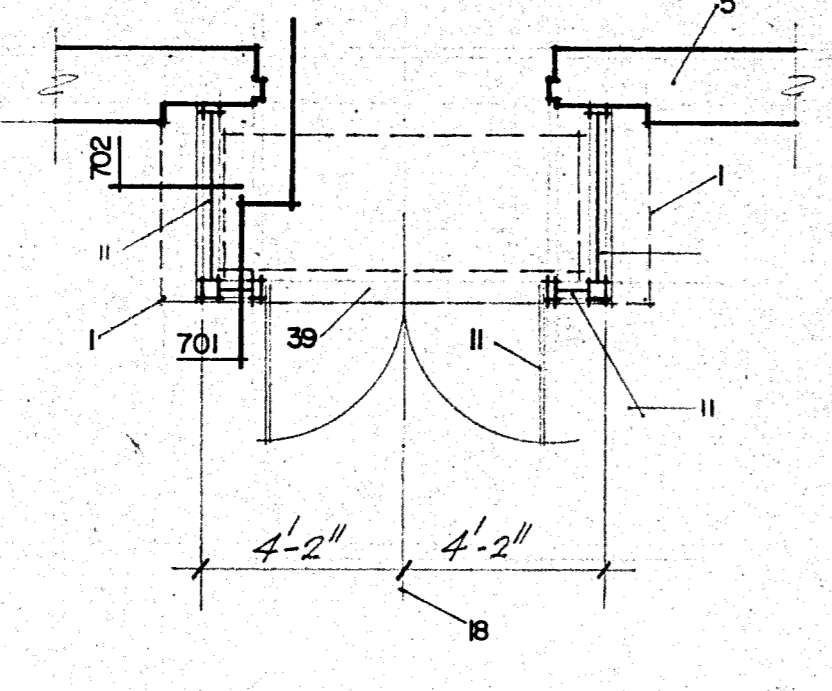
705 Sill
3" SCALE



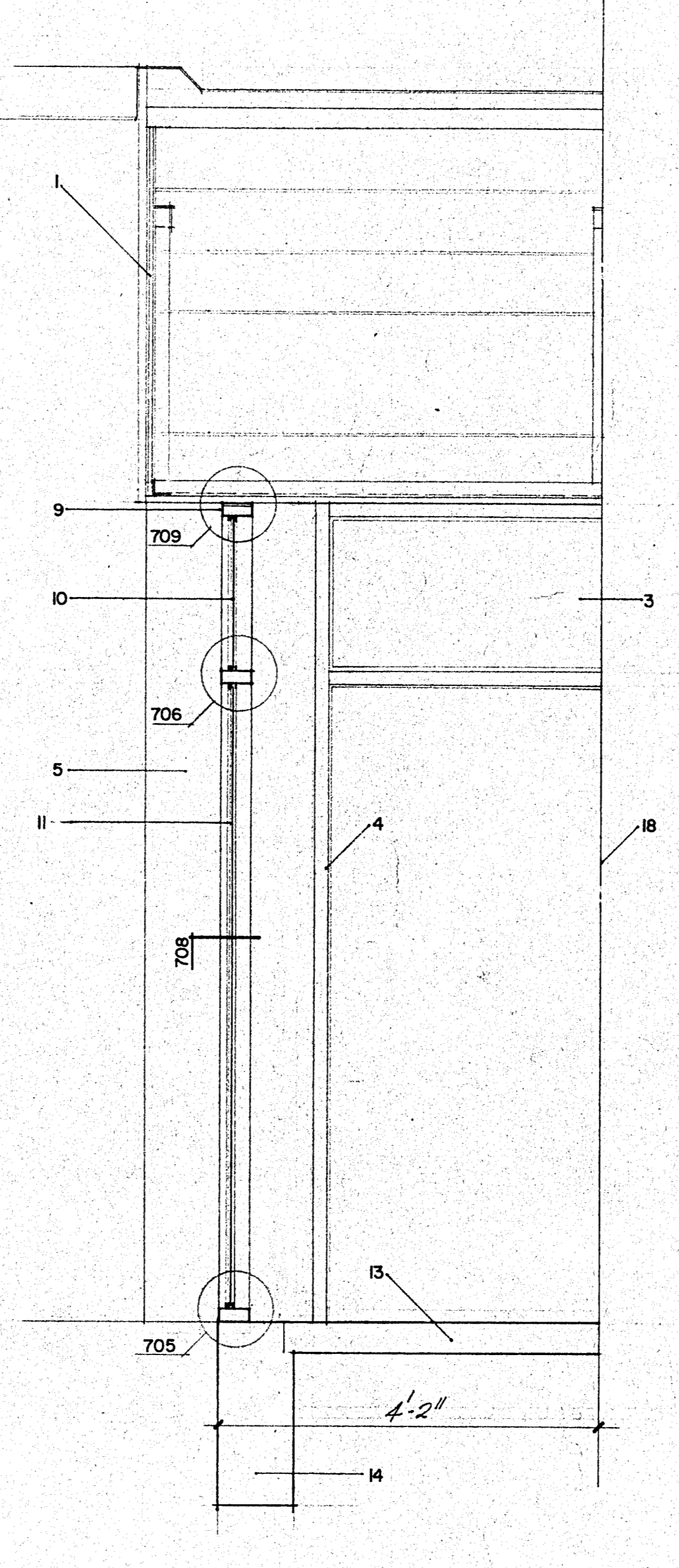
704 Sill
3" SCALE



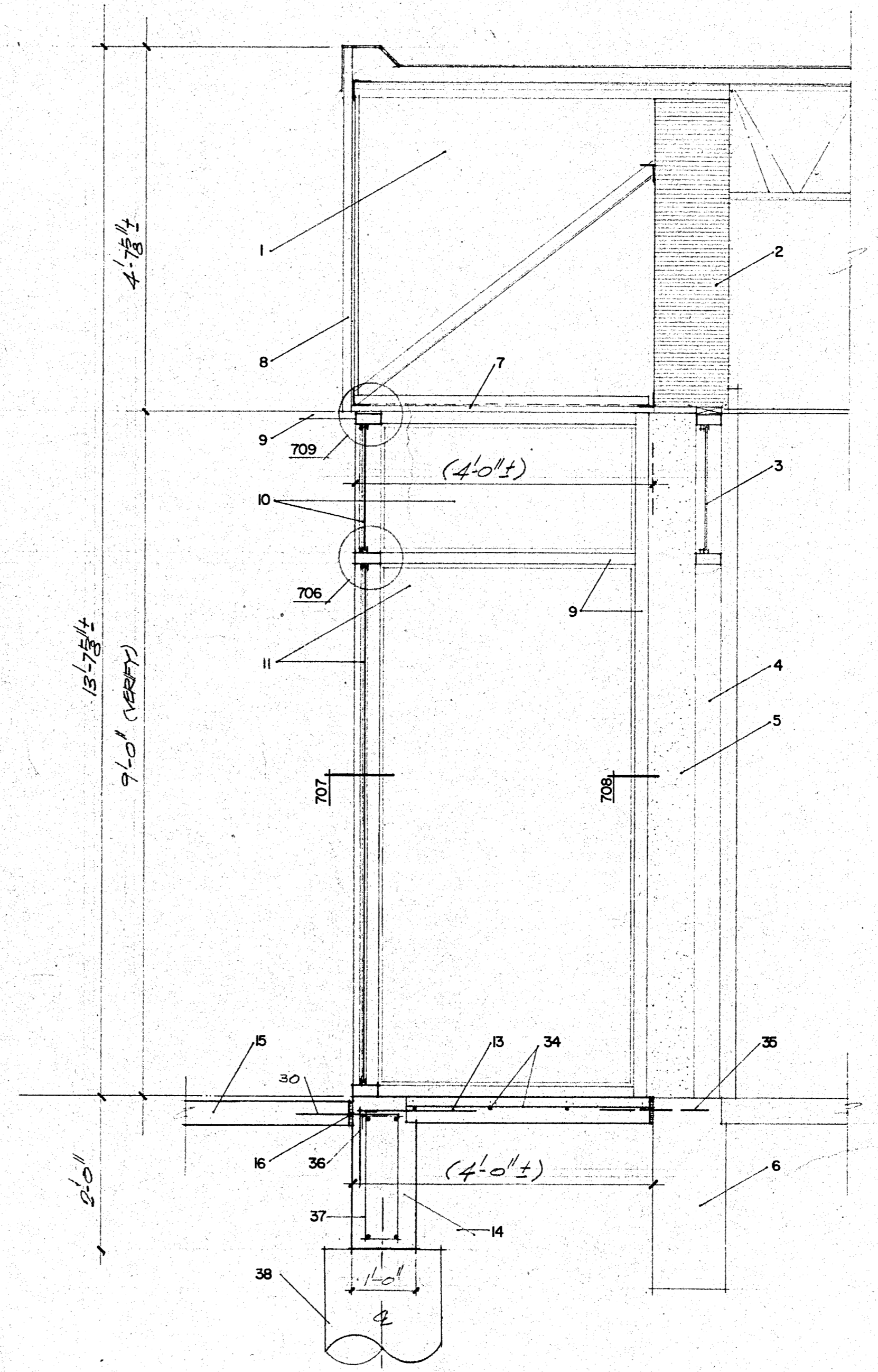
708 Jamb
3" SCALE



703 Plan
1/4" SCALE



702 Sec.
3/4" SCALE



701 Sec.
3/4" SCALE



Additions and Alterations to the
Addison Municipal Center
Addison, Texas

The O'Brien Corporation
ARCHITECTURE + PLANNING
ONE NORTH PARK EAST, SUITE 116
DALLAS, TEXAS 75231
214 696 1997