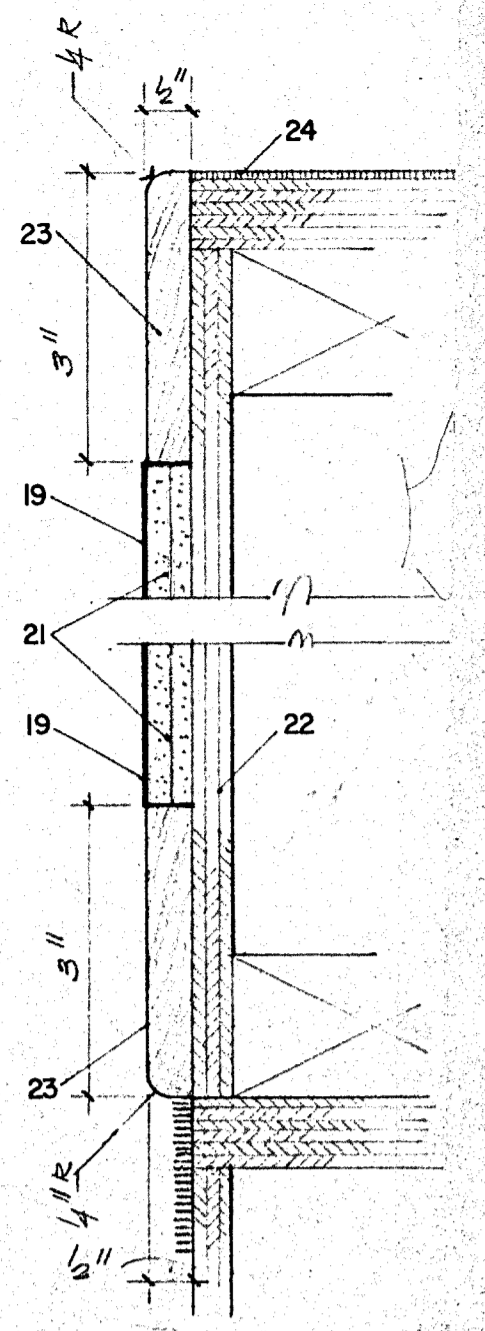
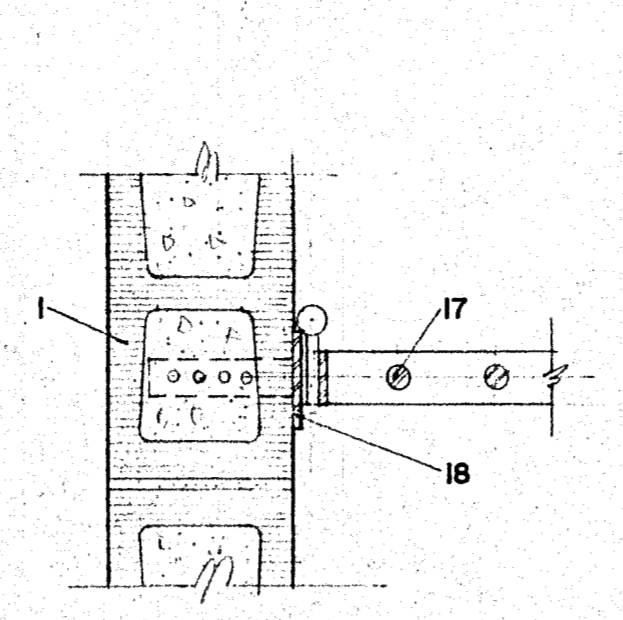


Notes

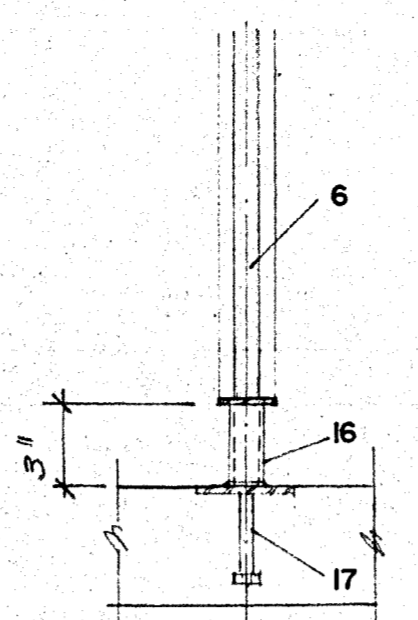
- 1.) CONCRETE BLOCK PAINTED.
- 2.) NEW JAIL GRATING AS DETAILED AND EQUAL TO SOUTHERN STEEL COMPANY SPECIFICATIONS
- 3.) EXTENT OF JAIL GRATING RELOCATED FROM STORAGE 162.
- 4.) WALL HUNG BUNK, VANDAL PROOF, (TWO BUNKS SHALL BE RELOCATED FROM STORAGE 162, VERIFY ALL DIMENSIONS).
- 5.) FLOOR MOUNTED COMBINATION WATER CLOSET & LAVATORY.
- 6.) GRATING WALL.
- 7.) 1/4"x4" STEEL BAR BUCK CONTINUOUS WITH 3/8" DIA. X 4" LONG STUDS @ 24" O.C.
- 8.) 3/16" FORMED PLATE CHANNEL.
- 9.) CONCRETE CEILING.
- 10.) 16 GA. STEEL PLATE BUNK BOTTOM.
- 11.) 3/16"x1 1/2"x2" CONTINUOUS ANGLE FRAME.
- 12.) 3/16" BUNK BRACKET.
- 13.) 1/4"x4" BAR BUCK W/ 3/16"x1 1/2"x4" BAR ANCHORS @ 3 PER BUCK.
- 14.) 2"x2"x3/16" ANGLE CONTINUOUS.
- 15.) 3/16" FORMED CHANNEL FRAME W/ 3/16"x1 1/2" BAR ANCHORS @ 2'-8" O.C.
- 16.) STEEL TUBE SLEEVE.
- 17.) 2'-6" WIDE DETENTION GRATE DOOR WITH FOOD TRAY PASS THROUGH.
- 18.) 1/4"x4" BAY BUCK W/3/16"x1 1/2"x4" BAR ANCHORS @ 2'-0" O.C.
- 19.) WOOD FABRIC AS SELECTED BY ALLOWANCE.
- 20.) 1/2" GYP. BD. PAINTED.
- 21.) 2 LAYERS OF 1/4" GYP. BD.
- 22.) 1/4" PLYWOOD
- 23.) 1/2"x3" RED OAK TRIM (STAINED)
- 24.) PLASTIC LAMINATE
- 25.) 2x4 WOOD STUDS @ 12" O.C.
- 26.) 4" RUBBER BASE
- 27.) CARPET
- 28.) 3/8" PLYWOOD
- 29.) 3/4" PLYWOOD
- 30.) 2x6 BLOCKING @ 24" O.C.
- 36.) 3/4"x10" PLYWOOD SHELF, EDGE BANDED, PAINTED
- 39.) #87 K&V STANDARD
- 40.) #186 K&V BRACKETS @ EACH SHELF



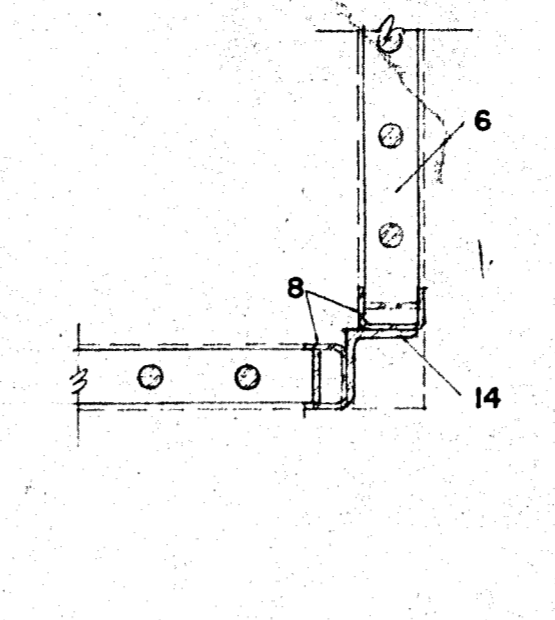
923 Det.  
HALF FULL SCALE



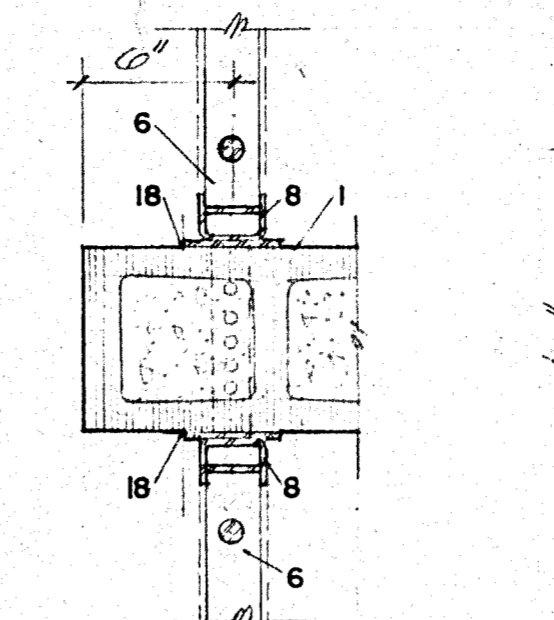
917 Det.  
1/2" SCALE



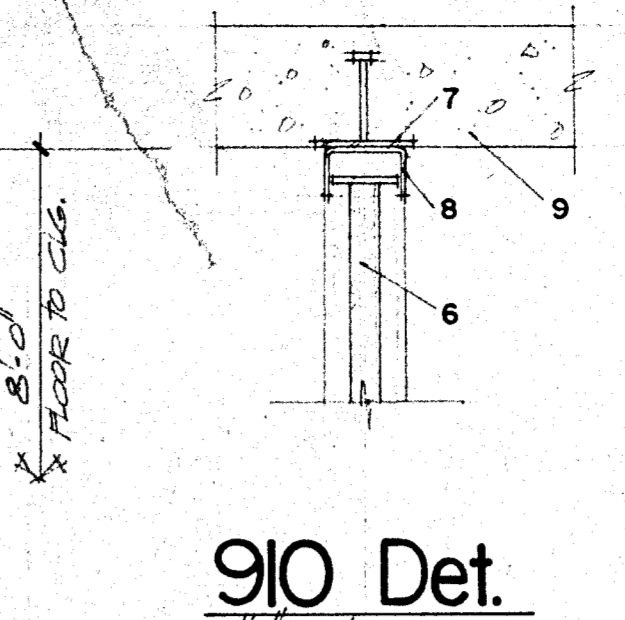
916 Det.  
1/2" SCALE



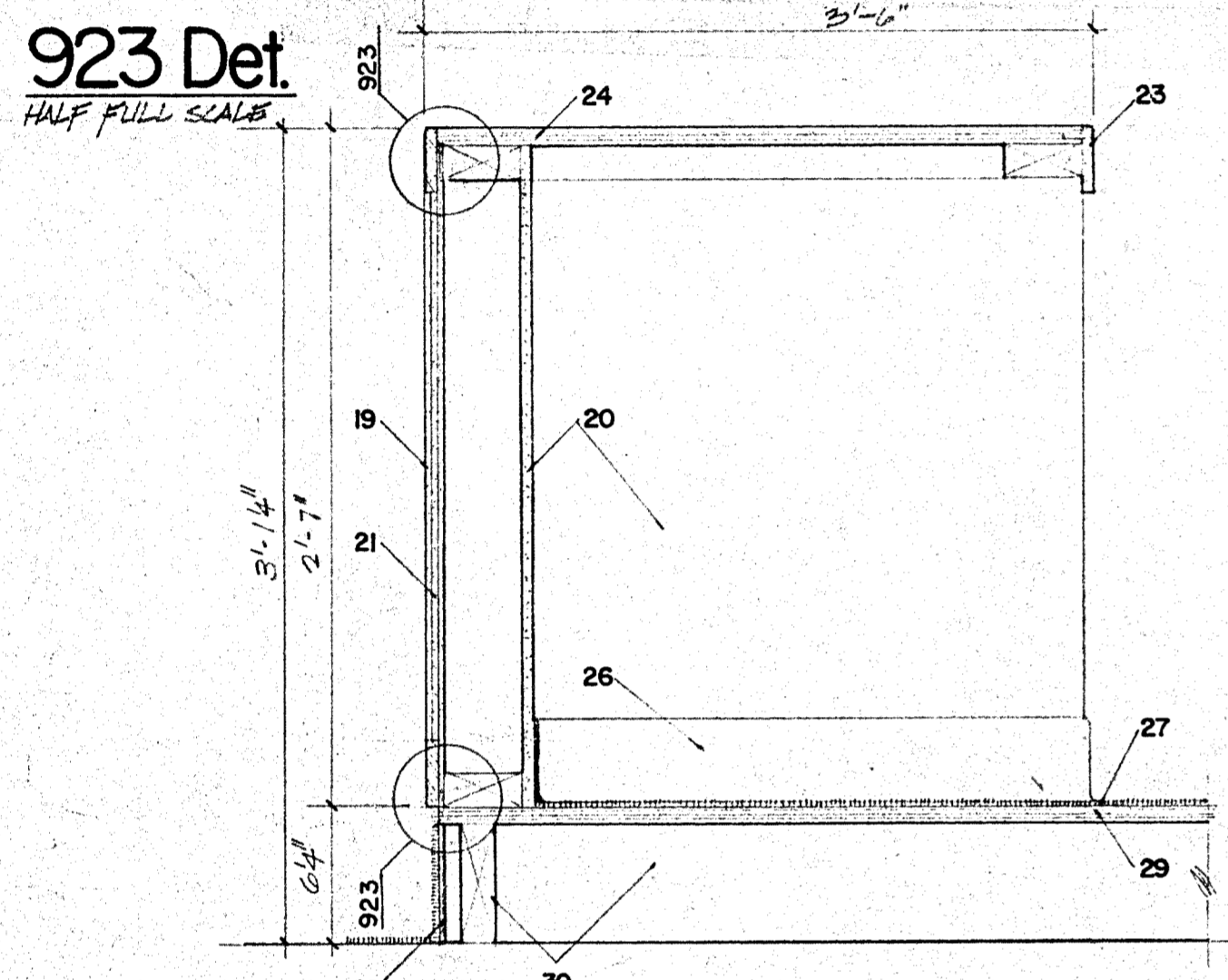
915 Det.  
1/2" SCALE



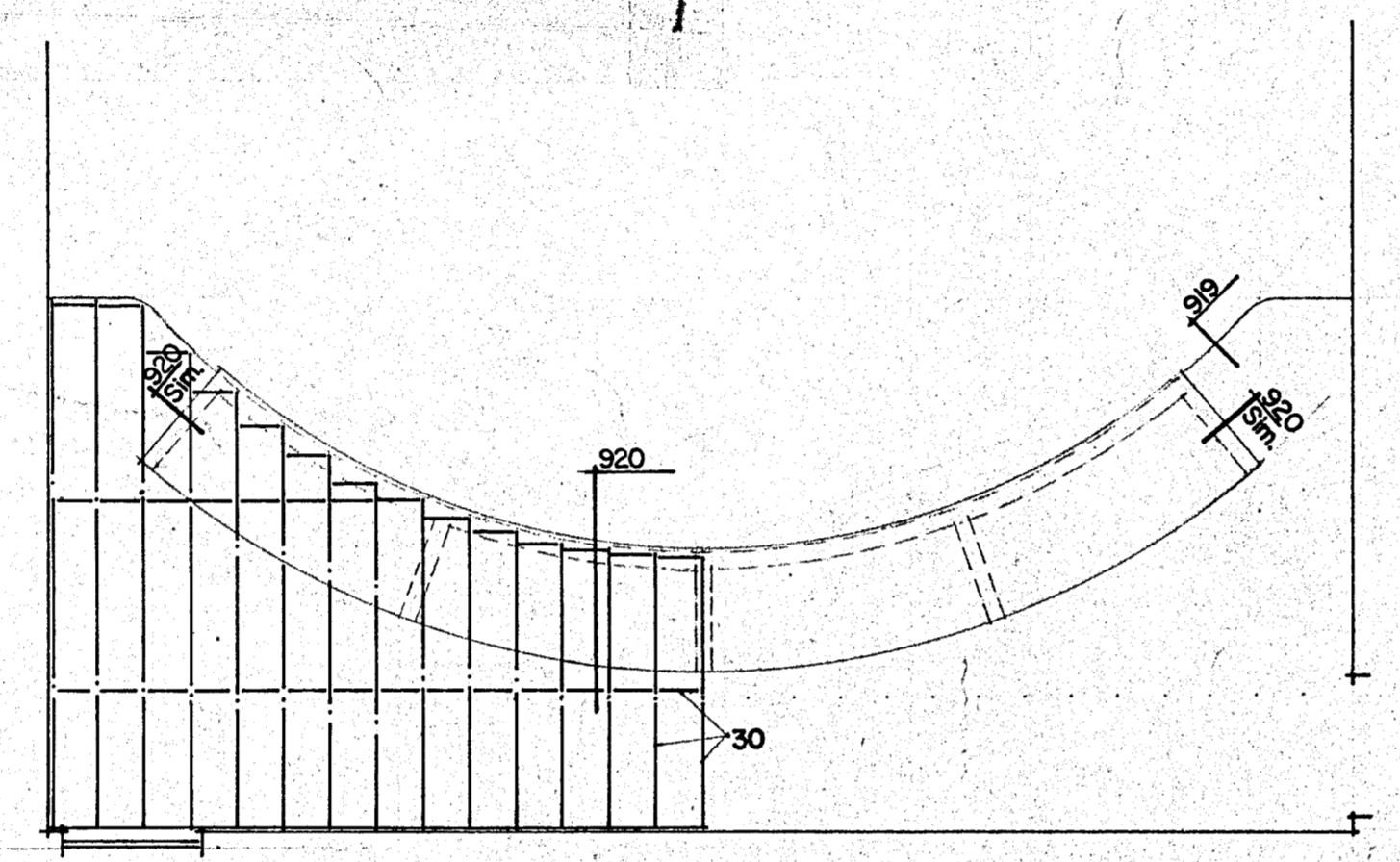
914 Det.  
1/2" SCALE



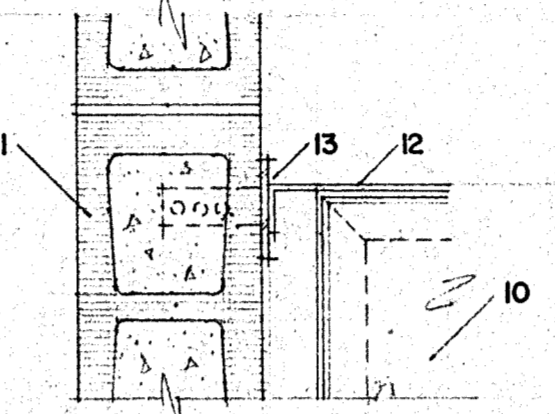
910 Det.  
1/2" SCALE



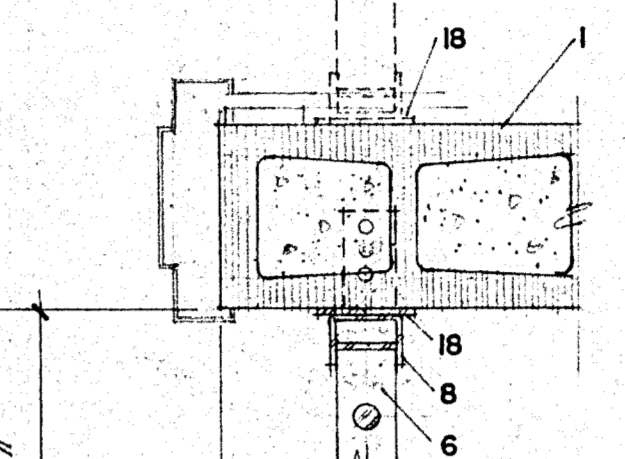
920 Det.  
1/2" SCALE



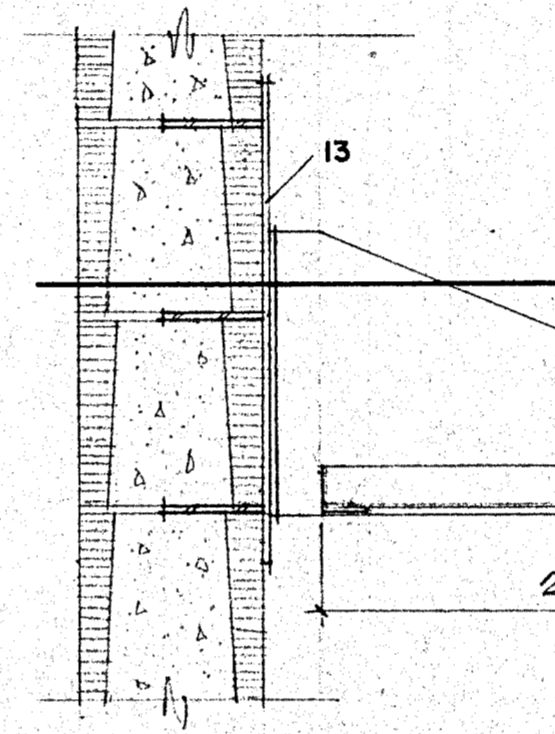
920 Det.  
1/2" SCALE



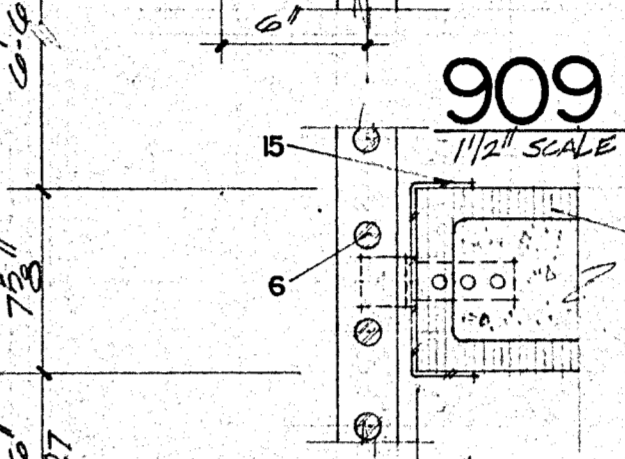
912 Det.  
1/2" SCALE



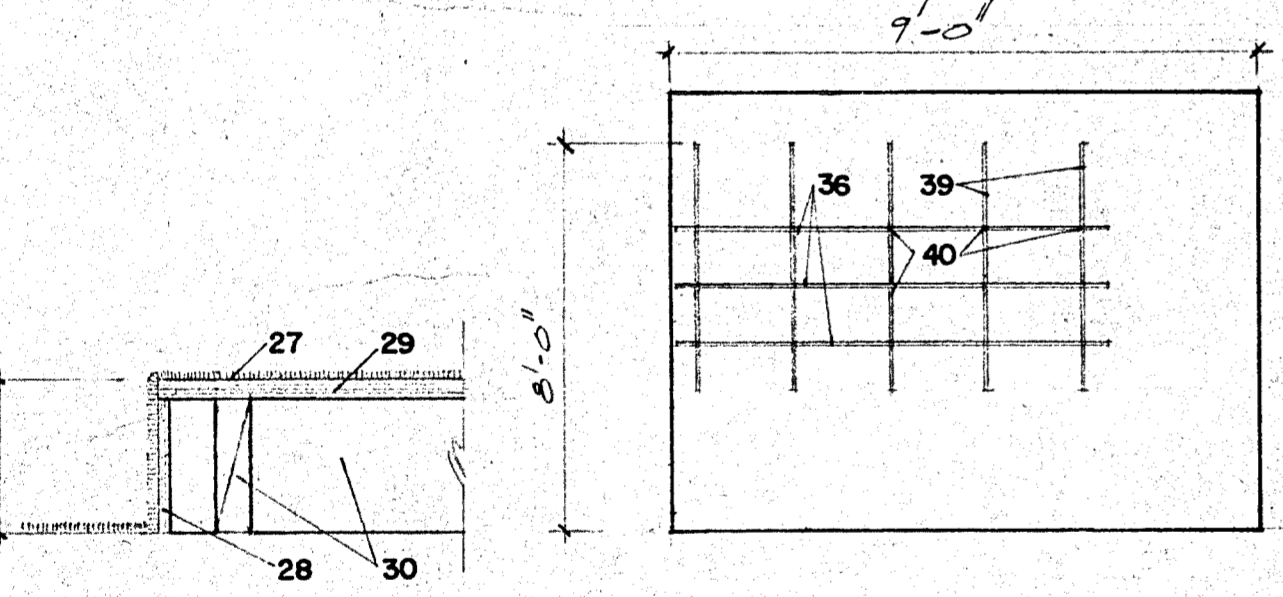
909 Det.  
1/2" SCALE



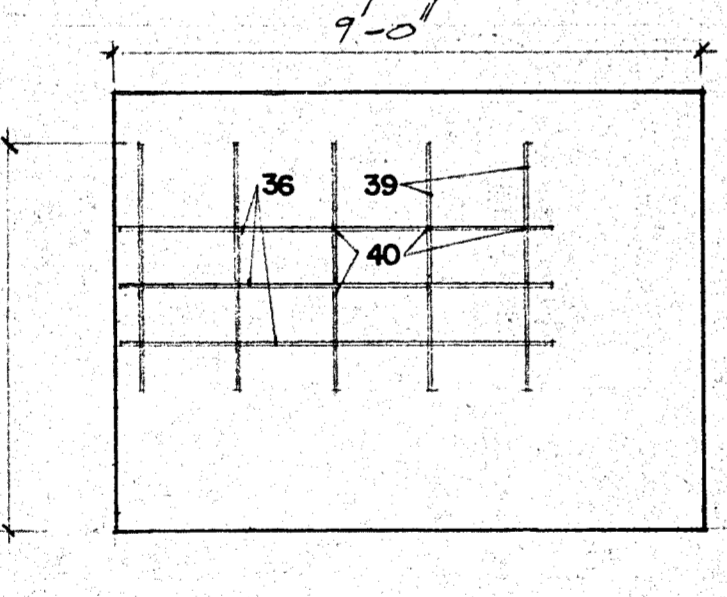
908 Det.  
1/2" SCALE



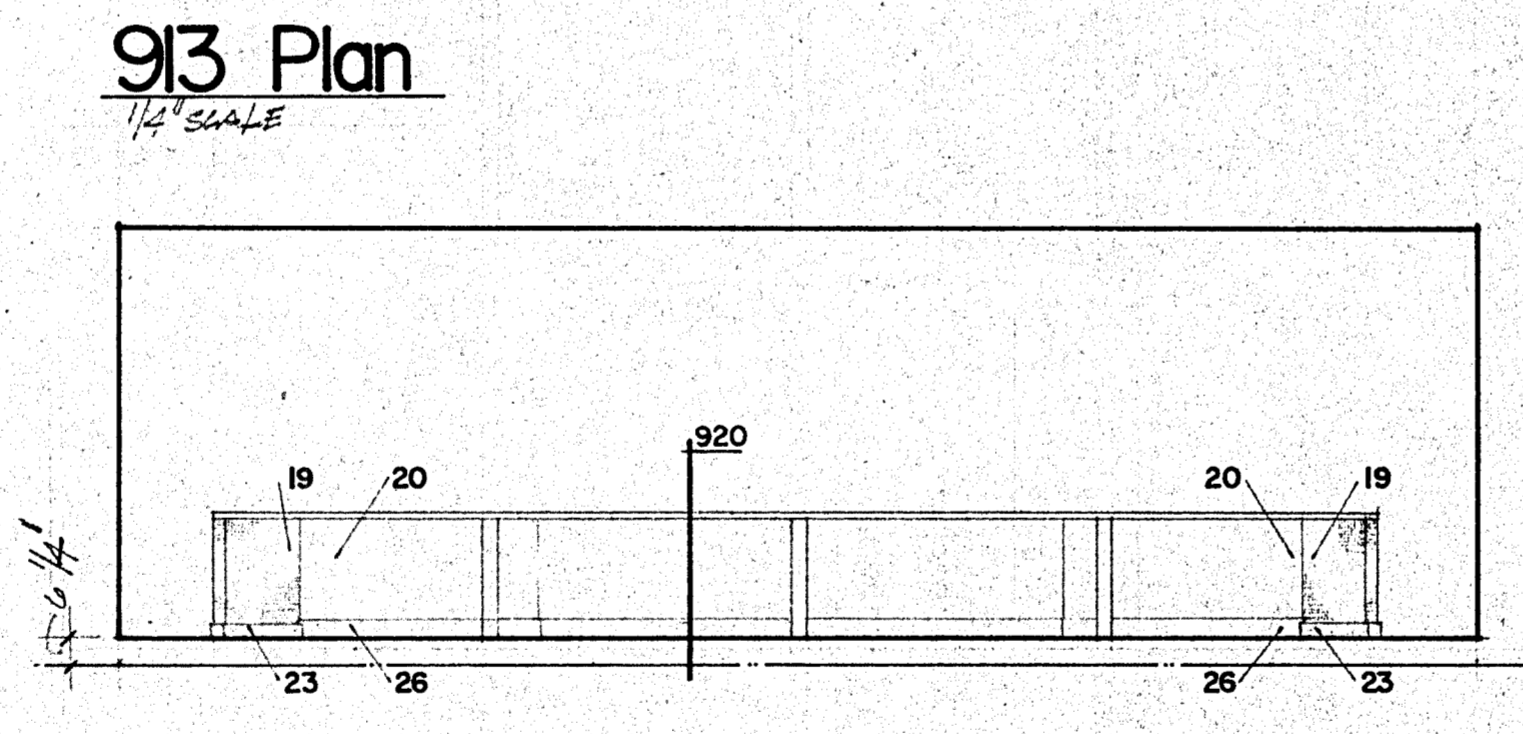
907 Det.  
1/2" SCALE



919 Det.  
1/2" SCALE

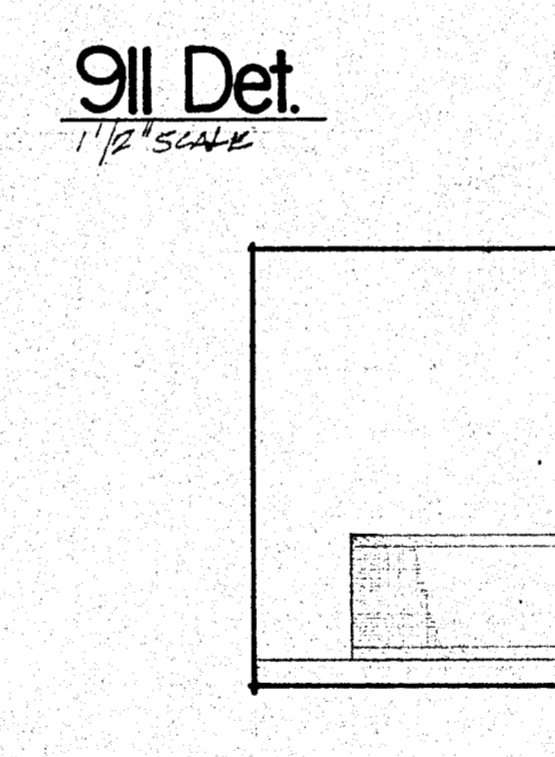


918 Elev.  
1/4" SCALE



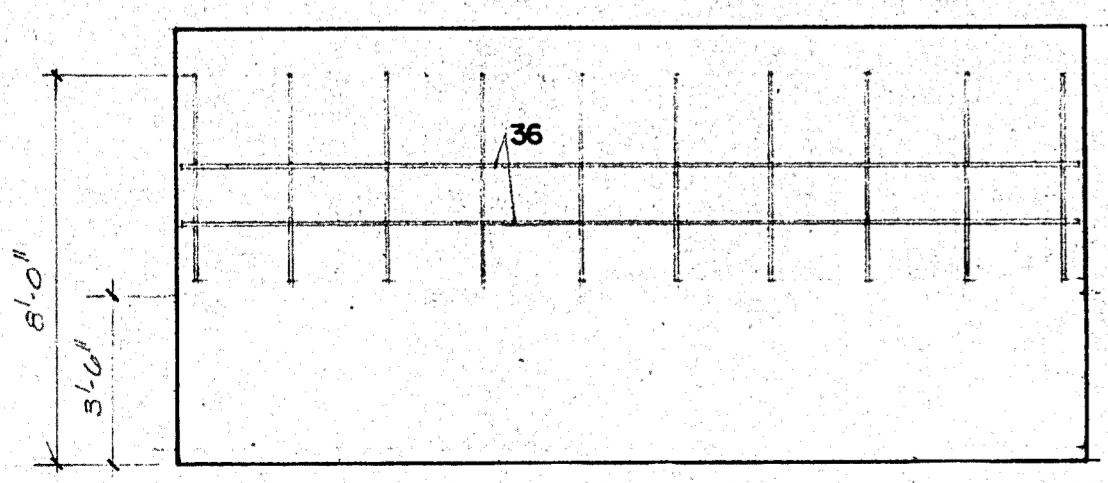
906 Elev.  
1/4" SCALE

911 Det.  
1/2" SCALE

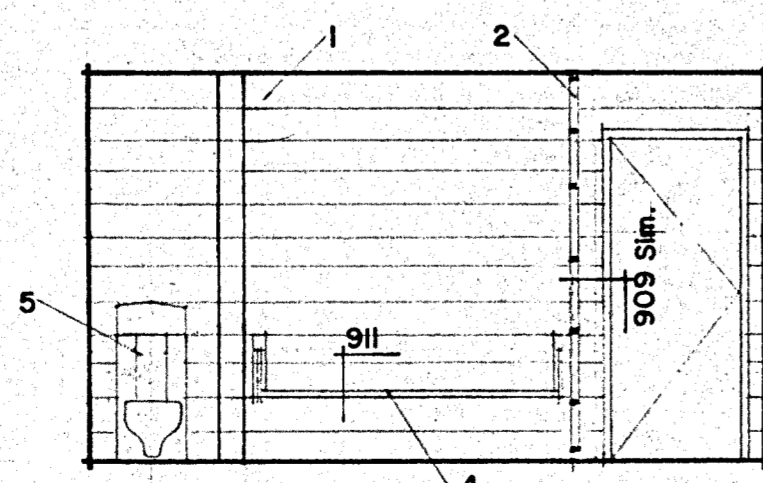


905 Elev.  
1/4" SCALE

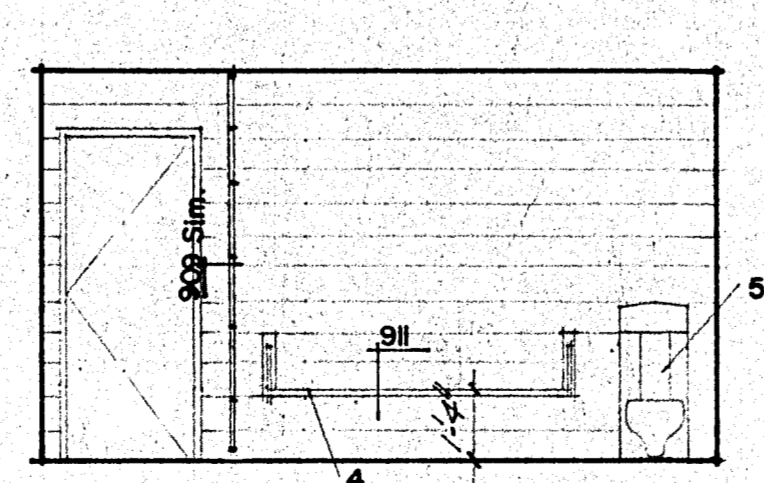
907 Det.  
1/2" SCALE



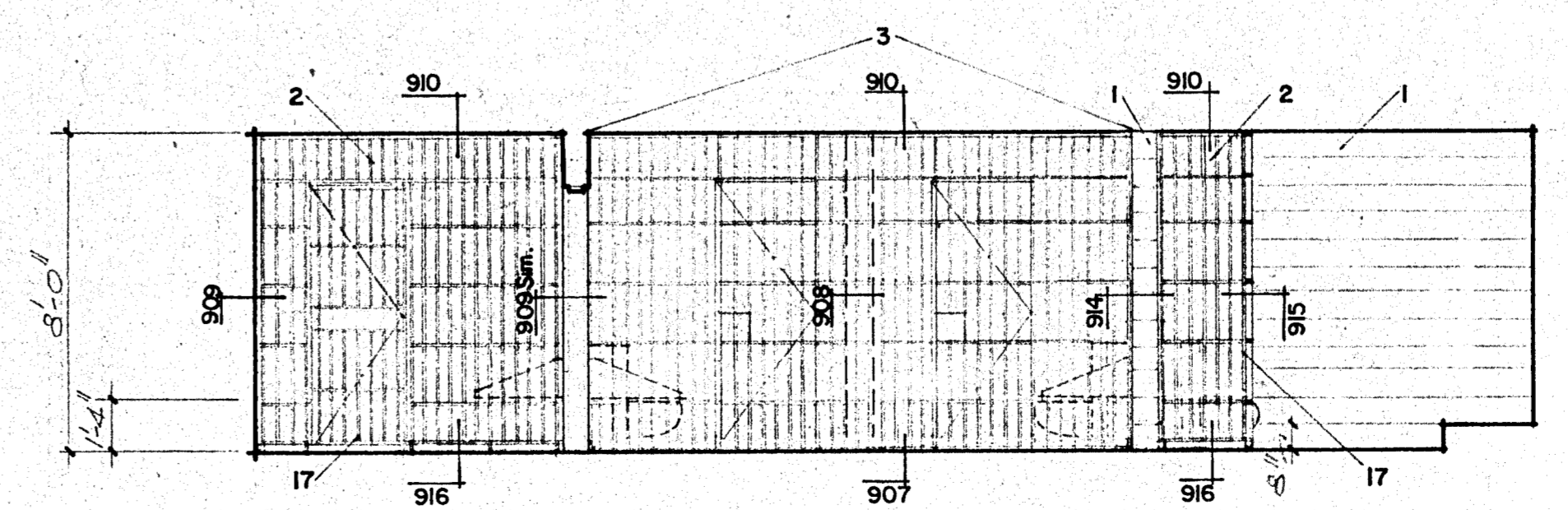
904 Elev.  
1/4" SCALE



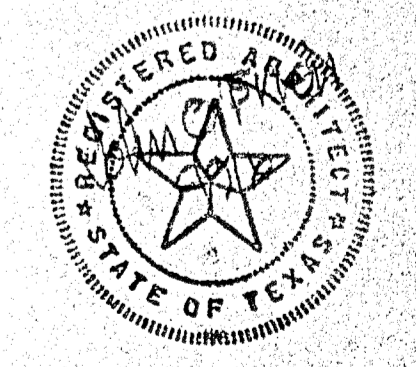
903 Elev.  
1/4" SCALE



902 Elev.  
1/4" SCALE



901 Elev.  
1/4" SCALE



Additions and Alterations to the  
**Addison Municipal Center**  
Addison, Texas

**The O'Brien Corporation**  
ARCHITECTURE + PLANNING  
ONE NORTH PARK EAST, SUITE 116  
DALLAS, TEXAS 75231  
214 696 1997