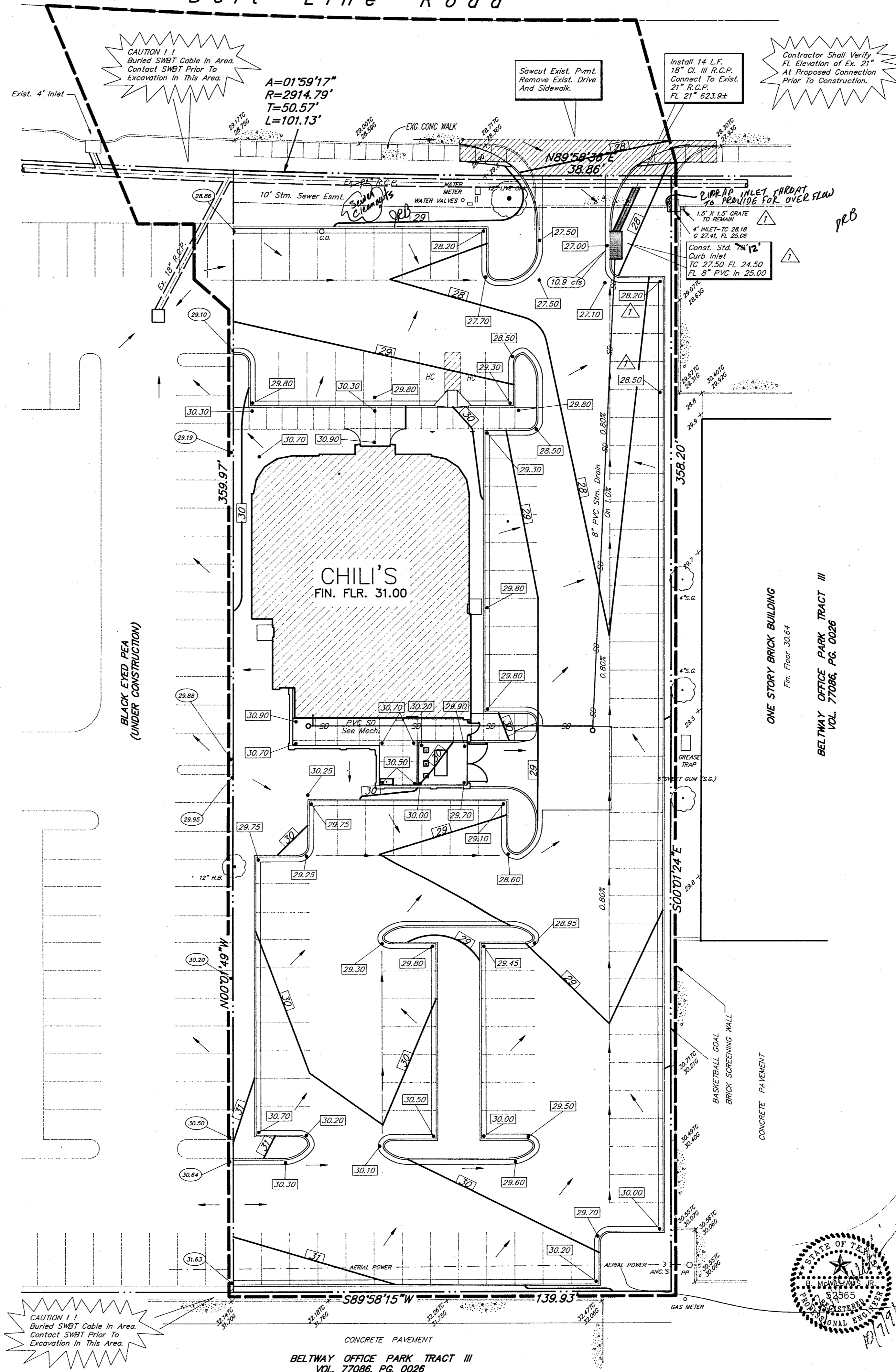
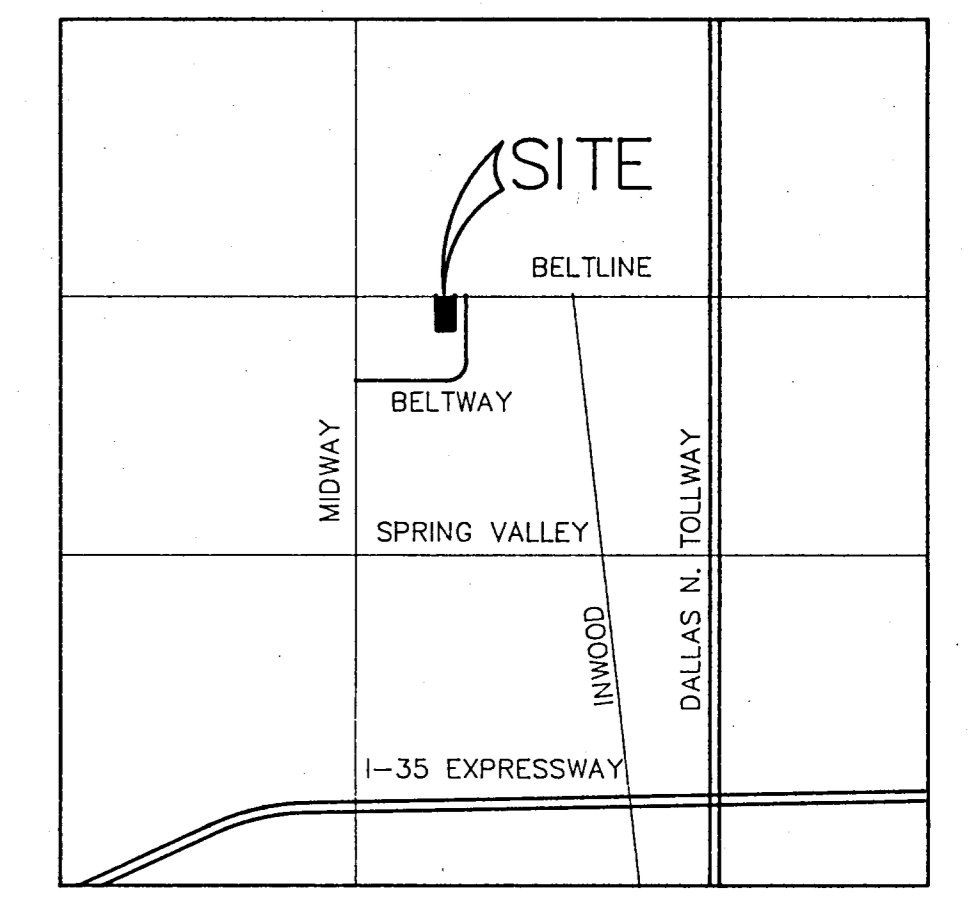


Belt Line Road



GENERAL NOTES

1. PRIOR TO PLACING ANY FILL MATERIAL, ALL EXISTING SURFACES, VEGETATION, LOOSE FILL, AND DEBRIS SHOULD BE REMOVED TO A MINIMUM DEPTH OF 6 INCHES. ALL EXPOSED SURFACES SHOULD THEN BE SCARIFIED, WATERED AS REQUIRED, AND RECOMPACTED TO A MINIMUM DENSITY OF 95% OF THE MAXIMUM DRY DENSITY AS DEFINED BY ASTM D 698 (STANDARD PROCTOR DENSITY) AT A MOISTURE CONTENT BETWEEN THE OPTIMUM MOISTURE VALUE AND 2% ABOVE OPTIMUM.
2. FILL MATERIALS SHOULD BE PLACED IN 6" TO 8" LOOSE LIFTS AT A MOISTURE CONTENT BETWEEN OPTIMUM AND 2% ABOVE OPTIMUM. MINIMUM COMPACTION SHOULD BE 90% FOR FILLS OF 3 FEET OR LESS AND 95% FOR FILLS GREATER THAN 3 FEET. EACH LIFT SHOULD BE INSPECTED AND APPROVED BY A GEOTECHNICAL ENGINEER.
3. DRAINAGE SHOULD BE MAINTAINED AWAY FROM THE FOUNDATIONS, BOTH DURING AND AFTER CONSTRUCTION.
4. BACKFILL FOR UTILITY LINES SHOULD BE CAREFULLY PLACED SO THAT THEY WILL BE STABLE. WHERE UTILITY LINES PASS THROUGH THE PAVEMENT AREAS, THE TOP 6" SHOULD BE COMPACTED SIMILARLY TO THE REMAINDER OF THE PAVEMENT. UTILITY DITCHES SHOULD BE VISUALLY INSPECTED DURING THE EXCAVATION PROCESS TO INSURE THAT UNDESIRABLE FILL THAT WAS NOT DETECTED BY THE TEST BORINGS IS NOT USED.
5. IT IS THE CONTRACTOR'S RESPONSIBILITY TO VERIFY THE EXACT LOCATION AND ELEVATION OF EXISTING UTILITIES AND NOTIFY THE ENGINEER OF ANY DISCREPANCIES.
6. CONTRACTOR SHALL REMOVE ANY ABANDONED SEWER CLEANOUTS TO A MINIMUM DEPTH OF 24" BELOW PROPOSED GRADE. Cleanouts shall be properly plugged to prevent infiltration.



LOCATION MAP
NO SCALE

Runoff Calculations

$C = 0.9$
 $I_{100} = 8.74 \text{ in./hr.}$
 $AREA = 1.38 \text{ Acres}$
 $RUNOFF = (0.9) (8.74) (1.38) = 10.9 \text{ CFS}$

Legend

- 34 Proposed Contour
- 30.70 Exist. Spot Elev.
- 30.0 Prop. Spot Elev. Per Black Eyed Pea Plans
- 30.8 Proposed Spot Elev.
- \rightarrow Flow Arrow
- Drainage Divide

BENCH MARK:
Square Cut on Conc. Base of Light Pole 5'± West of Black-Eyed Pea West Property Line, And 50'± South of Belt Line Road.

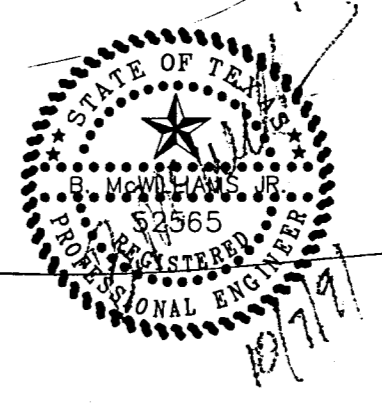
Revised 10/7/1991

GRADING PLAN
CHILI'S RESTAURANT
 CITY OF ADDISON, TEXAS

BROCKETTE · DAVIS · DRAKE, inc.
 consulting engineers

Civil & Structural Engineering-Surveying
 3535 Travis, Suite 100 · Dallas, Texas 75204 · (214) 522-9540

DESIGN	DRAWN	DATE	SCALE	NOTES	FILE	NO.
BDD	BDD	AUG. '91	1"=20'		C91199	GRAD . DWG



CAUTION 1:1 Buried SWBT Cable In Area. Contact SWBT Prior To Excavation In This Area.

Contractor Shall Verify FL Elevation of Ex. 21. At Proposed Connection Prior To Construction.

Sawcut Exist. Pmnt. Remove Exist. Drive And Sidewalk.

CAUTION 1:1 Buried SWBT Cable In Area. Contact SWBT Prior To Excavation In This Area.