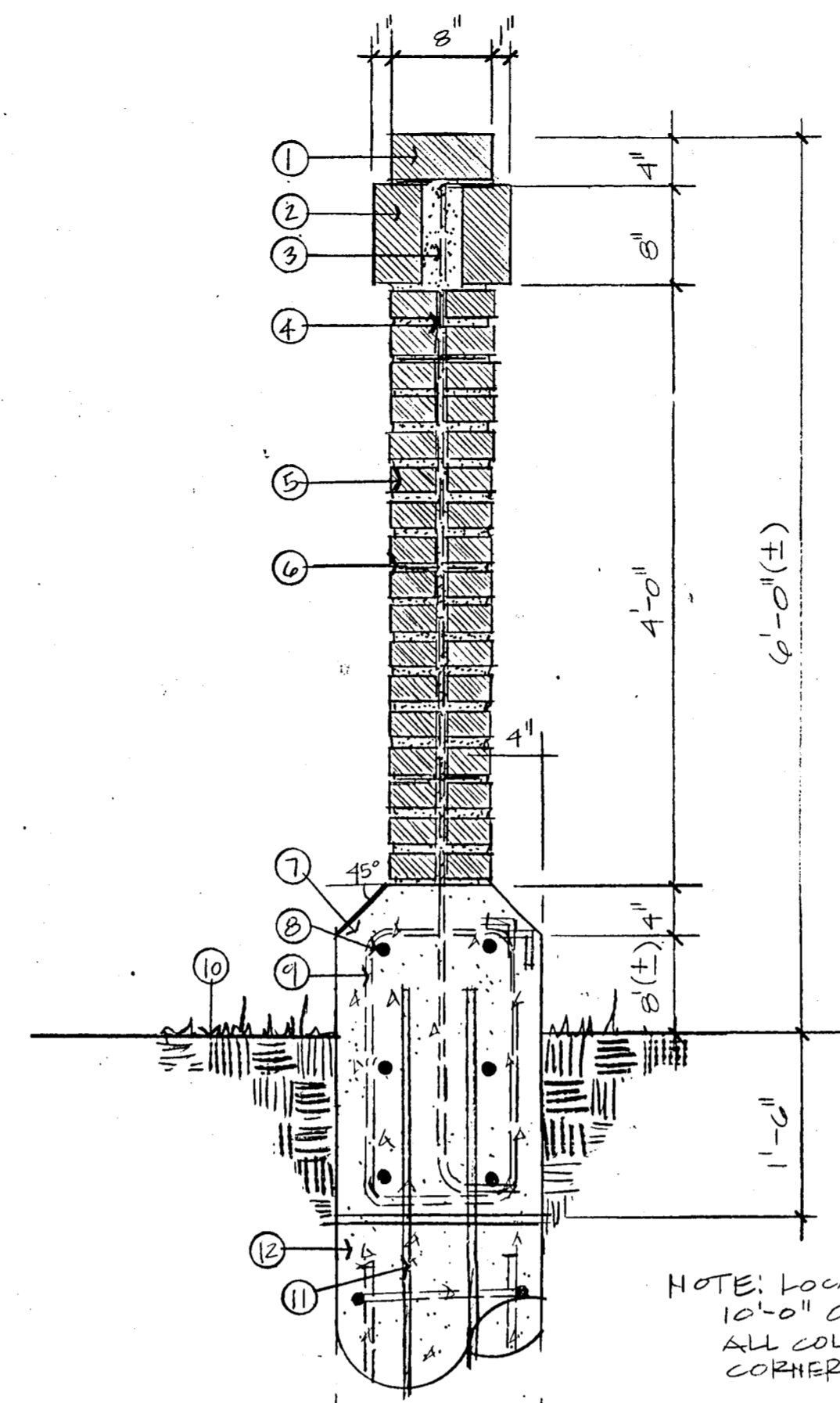


NOTE: BRICK SELECTED BY OWNER

- 1 BRICK CAP
- 2 BRICK WALL ELEVATION
- 3 EXPANSION JOINT (SEALED)
- 4 RUNNING BOND COURSE
- 5 GATE HINGE SET IN COLUMN TOP
- 6 CONCRETE FILL
- 7 1-#5 REBAR FROM FOOTING TO TOP OF COL.
- 8 #2 REBAR TIES 12" O.C.
- 9 CONCRETE BASE/FOOTING 16" X 16"
- 10 4-#4 REBAR 26" LONG VERT. @ EA. CORNER
- 11 #3 REBAR TIES 6" O.C.
- 12 FINISHED GRADE REF. GRADING
- 13 4-#5 X 3'-0" LONG DOVELS
- 14 CONG. PIER 16" Ø EA. PILASTER REF. 02/THIS SHEET

NOTE: ALL FOOTINGS TO BE REVIEWED BY A STRUCTURAL ENGINEER

01 BRICK COLUMN SECTION SCALE: 1"=1'-0"



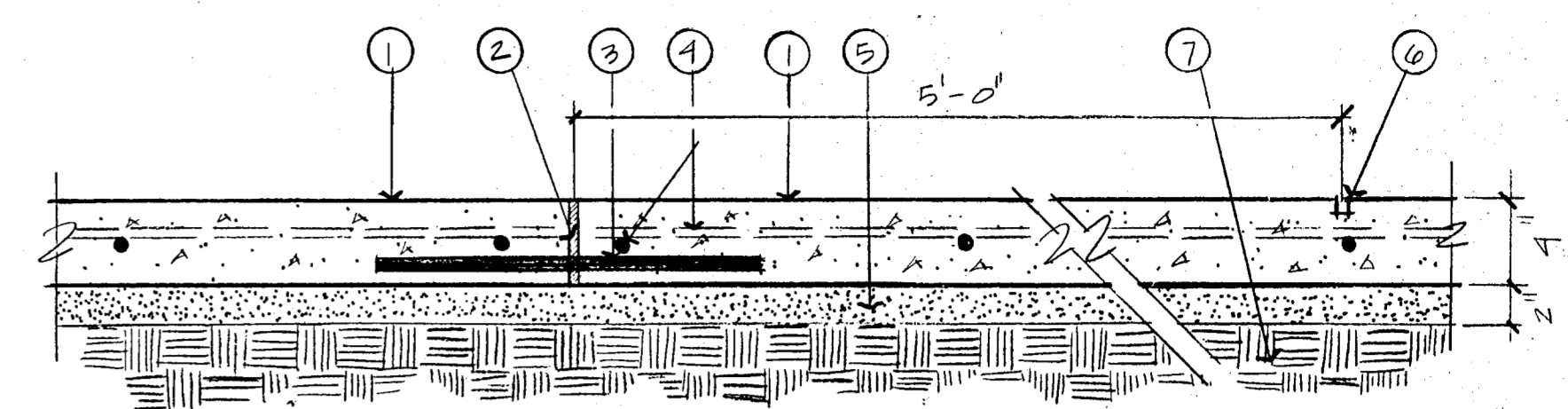
NOTE: BRICK SELECTED BY OWNER

- 1 ROWLOCK CAP
- 2 SOLDIER COURSE
- 3 MORTAR OR BRICK FILL
- 4 #3 REBAR 12" O.C. FROM FOOTING TO TOP OF WALL
- 5 RUNNING BOND COURSE
- 6 HEAVY DUTY WELDED MESH EVERY 6TH COURSE
- 7 CONCRETE BASE/FOOTING
- 8 6-#5 REBAR CONTINUOUS
- 9 #3 REBAR 16" O.C.
- 10 FINISHED GRADE REF. GRADING
- 11 1-#4 X 3'-0" LONG DOVELS
- 12 16" Ø CONG. PIER 2'-0" INTO ROCK

NOTE: WALL EXPANSION JOINTS 10'-0" O.C. EQUAL DISTANCE BETWEEN PIERS AND AT ALL CORNERS (SEALED) (IN WALL ONLY)

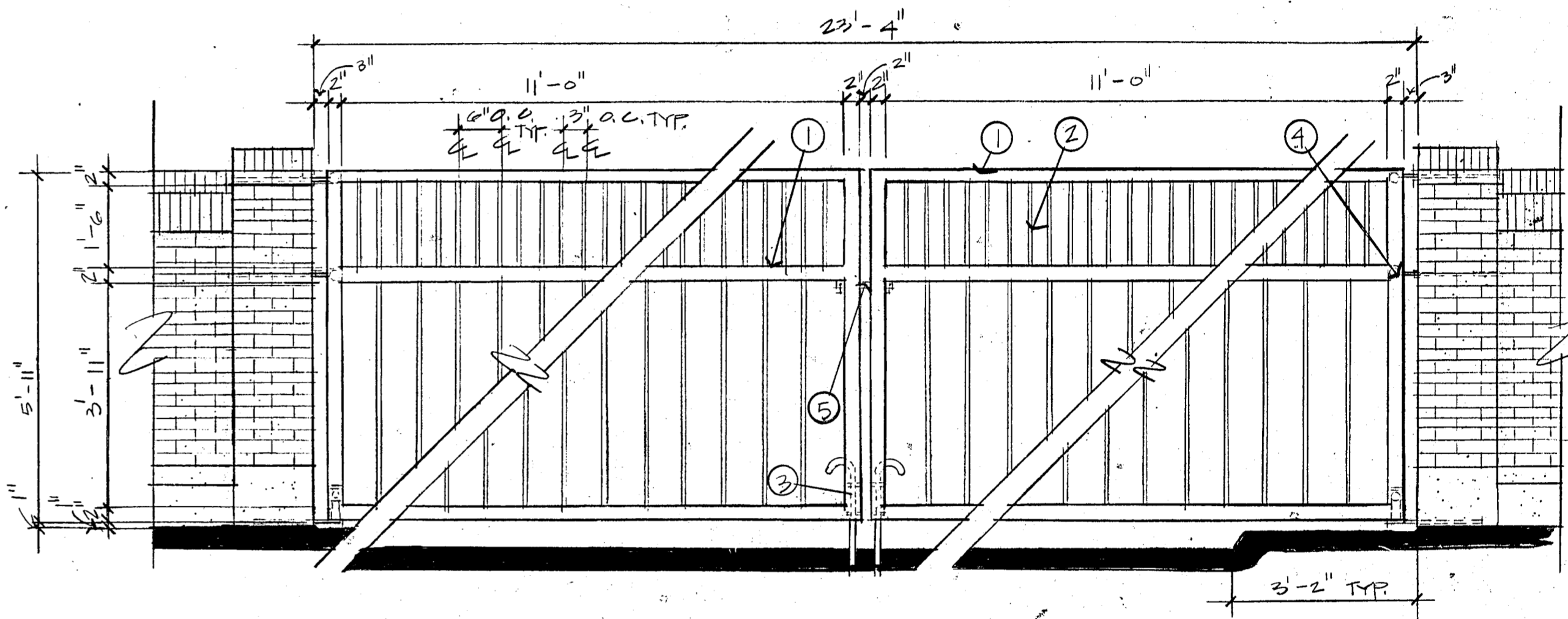
ALL FOOTINGS TO BE REVIEWED BY STRUCTURAL ENGINEER

02 BRICK WALL SECTION SCALE: 1"=1'-0"



- 1 ROUGH BROOM FINISH
- 2 1/4" THICK FIBER EXPANSION JOINT 15'-0" O.C.
- 3 2-1/2" Ø SMOOTH DOVEL 18" LENGTH CAPPED 20" O.C.
- 4 #3 REBAR 18" O.C. BOTH WAYS
- 5 2" SAND BED
- 6 1/4" DEPTH SAW CUT CONTROL JOINTS 5'-0" O.C.
- 7 COMPACTED SUBGRADE

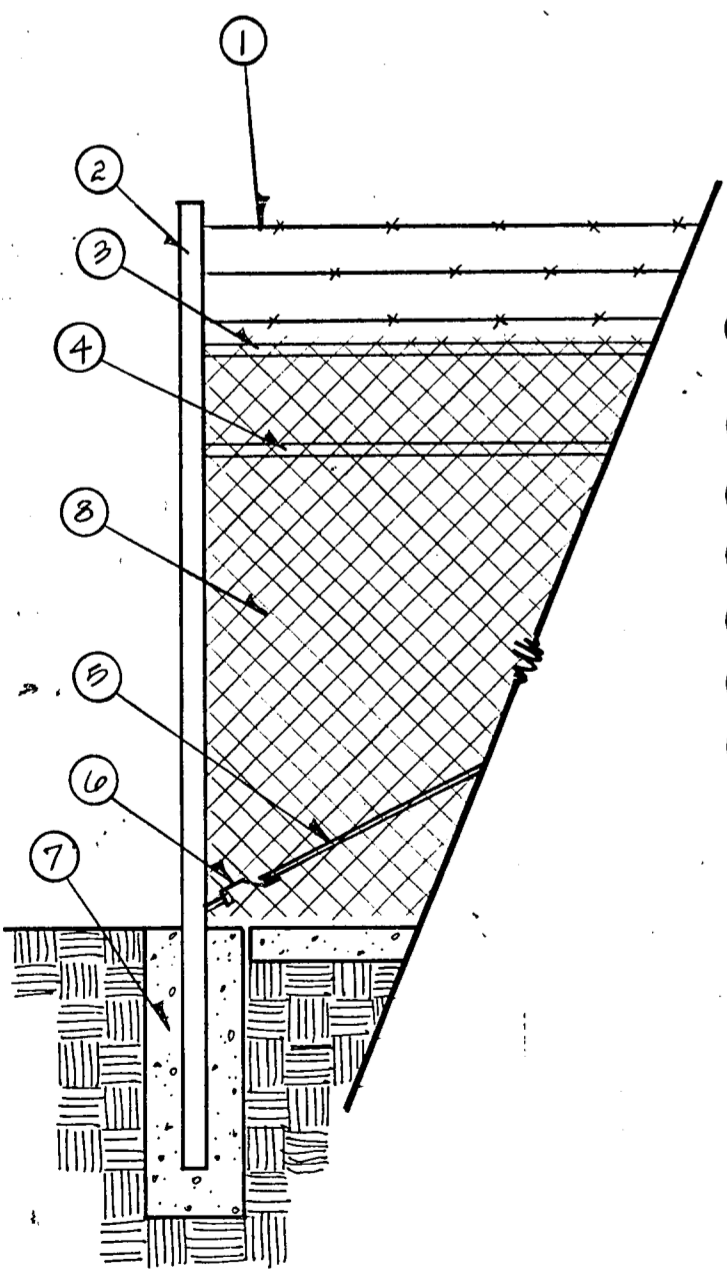
03 CONCRETE WALK SECTION SCALE: 1 1/2"=1'-0"



- 1 2" X 2" SQUARE WROUGHT IRON W/ 10 GAUGE WALLS
- 2 1" X 1" SQUARE WROUGHT IRON W/ 16 GAUGE WALLS
- 3 CANE BOLT
- 4 GATE HINGE SET IN COLUMN
- 5 GATE LATCH

NOTE: 1. CONTRACTOR TO PROVIDE SHOP DRAWINGS FOR LATCH, HINGES, CANE BOLT AND METHODS OF FABRICATION FOR FINAL APPROVAL BY OWNER
2. GATE DESIGN SHOWN BY IRON CRAFT STUDIO INC. #16126 CONTRACTOR TO GUARANTEE STRUCTURAL STABILITY OF GATE, HINGES, SUPPORT & FUNCTIONING

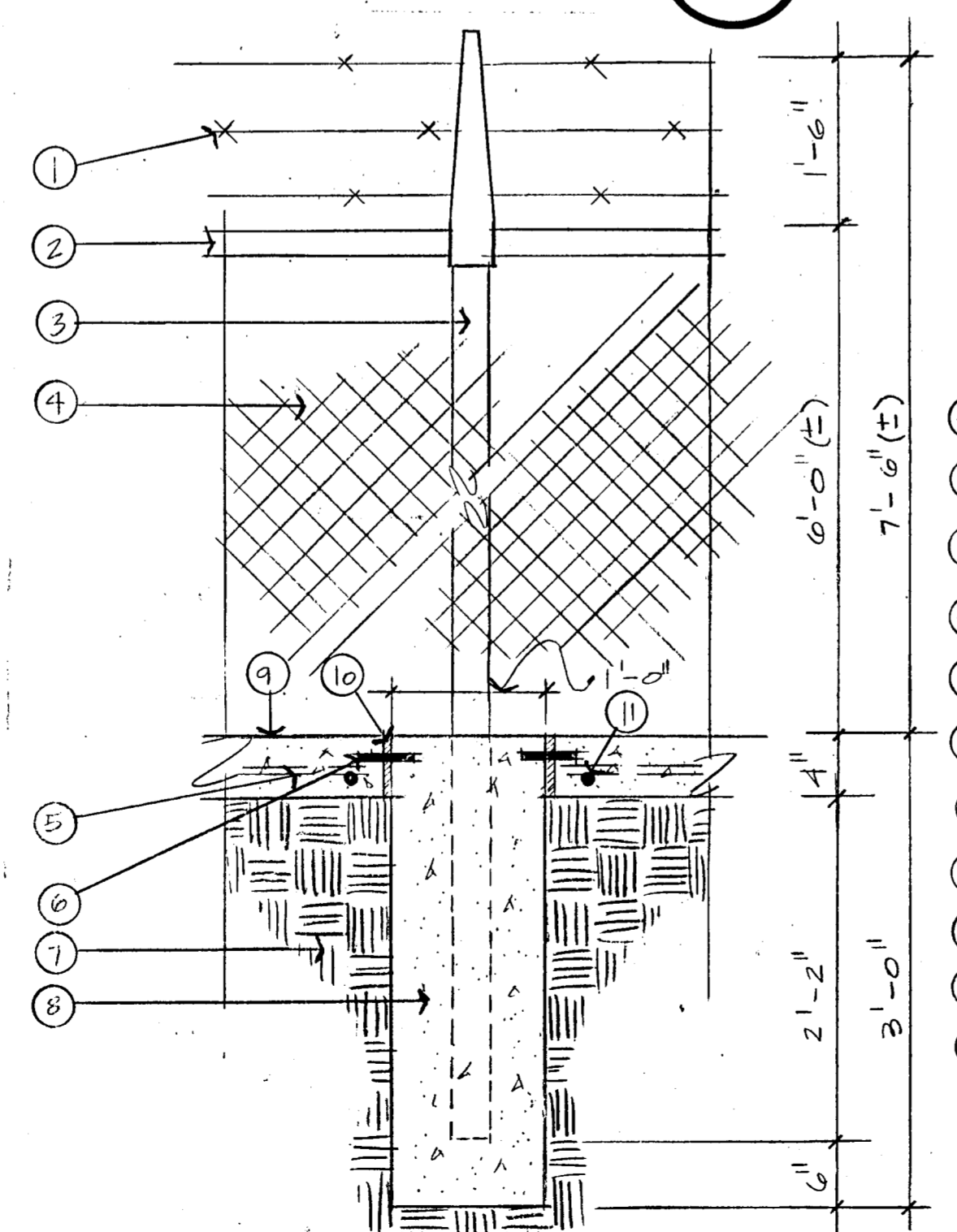
04 GATE ELEVATION SCALE: 1/2"=1'-0"



- 1 THREE STRANDS ALUMINUM COATED BARB WIRE
- 2 TERMINAL POST
- 3 BLACK PVC COATED TOP RAIL
- 4 BLACK PVC COATED BRAC RAIL
- 5 BLACK PVC COATED TENSE ROD
- 6 TENSE TIGHTENER
- 7 12" X 12" X 3'-0" CONCRETE FOOTING
- 8 BLACK PVC COATED CHAIN LINK FENCE 9 GAUGE

REF 06/20 FOR DETAILS & DIMENSIONS

05 TERMINAL POST SCALE: 1/2"=1'-0"

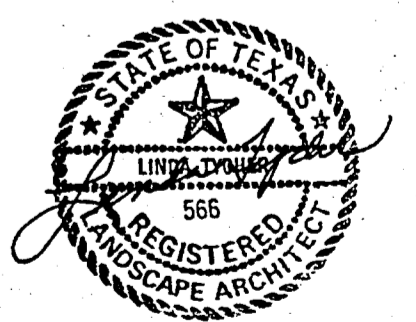


- 1 ALUMINUM COATED BARBED WIRE
- 2 GALVANIZED TOP RAIL PIPE W/ BLACK PVC COATING
- 3 GALVANIZED POST W/ BLACK PVC COATING 9'-0" O.C.
- 4 BLACK PVC COATED CHAIN LINK FENCE 9 GAUGE
- 5 2-#3 REBAR CONTINUOUS
- 6 2-1/2" Ø SMOOTH DOVEL 4" LENGTH CAPPED 6" O.C.
- 7 COMPACTED SUBGRADE
- 8 12" X 12" X 3'-0" CONG. FOOTING
- 9 12" X 4" DEEP CONG. MON STRIP W/ BROOM FINISH
- 10 1/4" THICK FIBER EXPANSION JOINT 2' AT EVERY POST
- 11 #3 REBAR 6" LONG 18" O.C.

ALL FOOTINGS TO BE REVIEWED BY STRUCTURAL ENGINEER

06 FENCE POST FOOTING SCALE: 1"=1'-0"

20
44



BELTWOOD RESERVOIR EXPANSION		
DETAILS		
DALLAS WATER UTILITIES CITY OF DALLAS, TEXAS		
Turner Collie & Braden Inc.		
DESIGN DRAWN	CONTRACT NO.	SHEET NO.
TRACED	89-79	20
CHECKED	FILE NO.	630 Q 700 F
DATE		OF 44