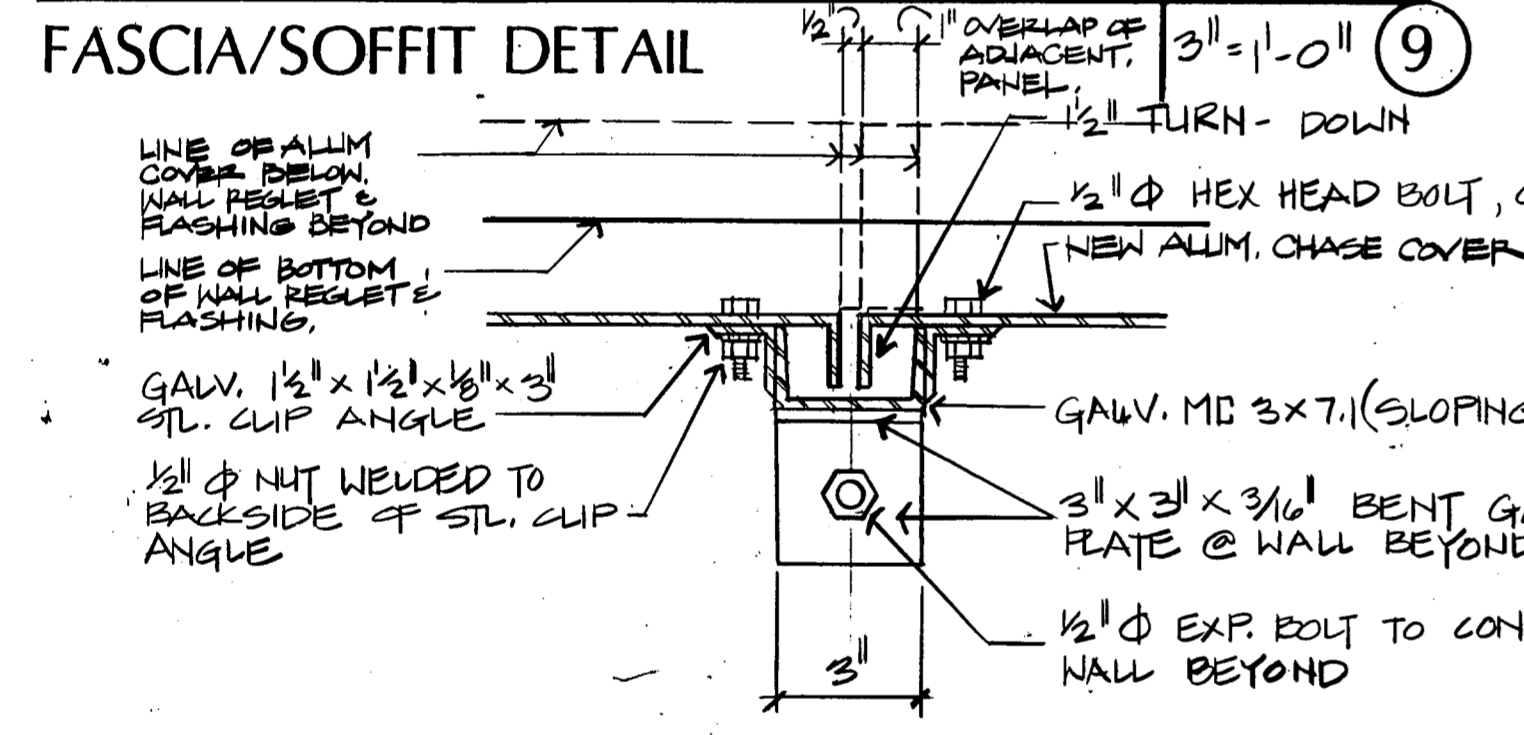
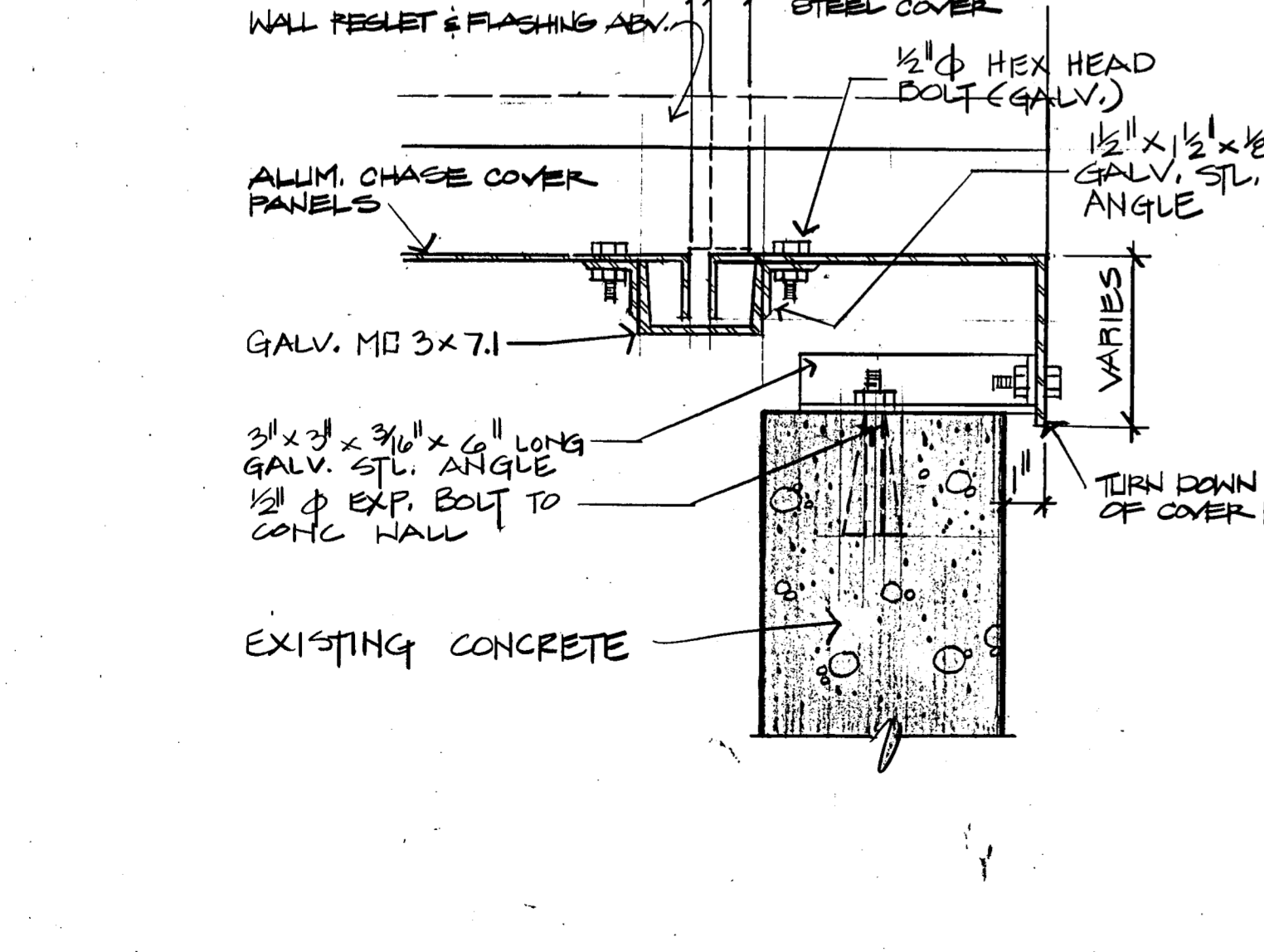


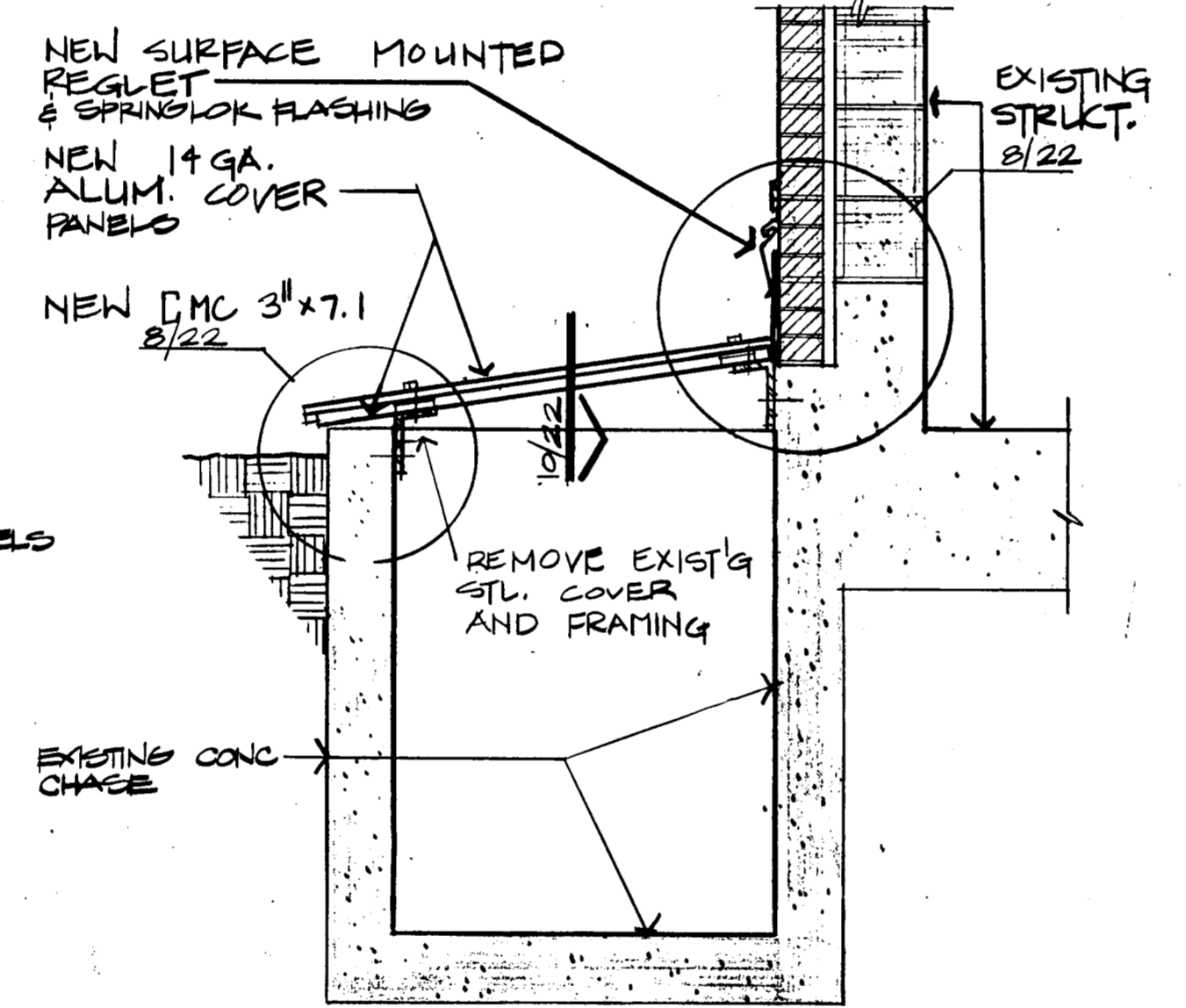
CHASE COVER 3/8"=1'-0" (8)



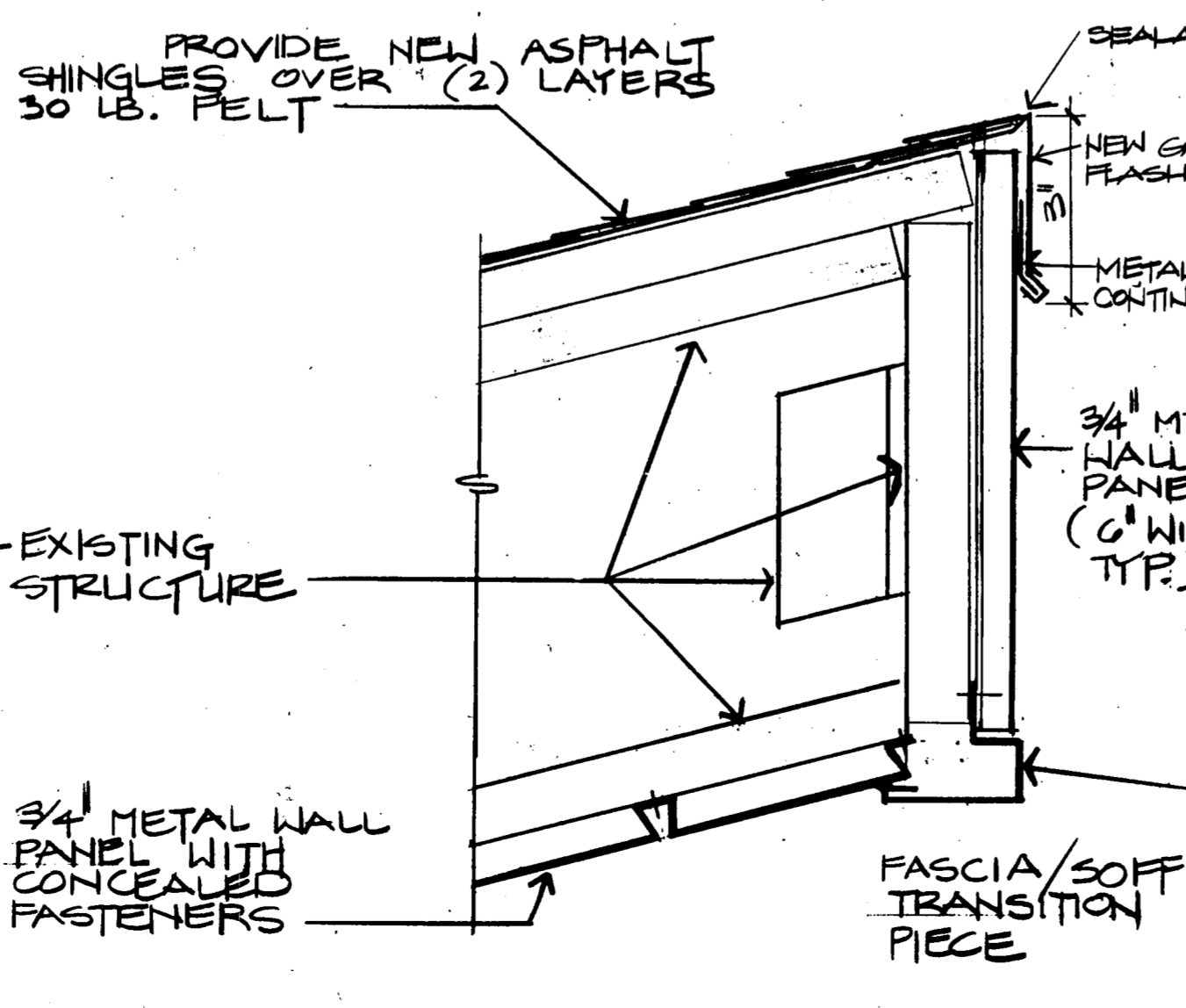
FASCIA/SOFFIT DETAIL 3/8"=1'-0" (9)



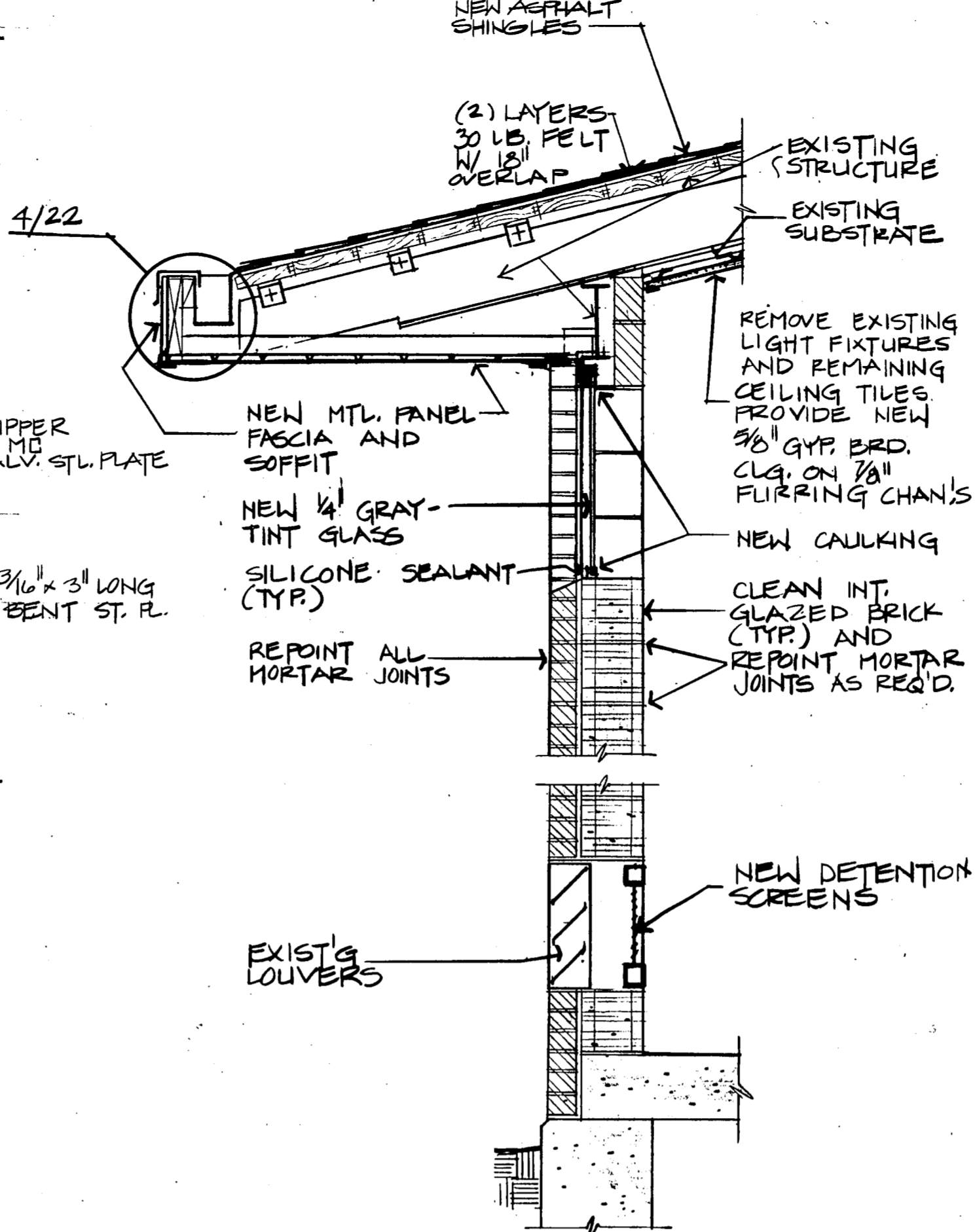
CHASE COVER- PANEL JOINT 3/8"=1'-0" (10)



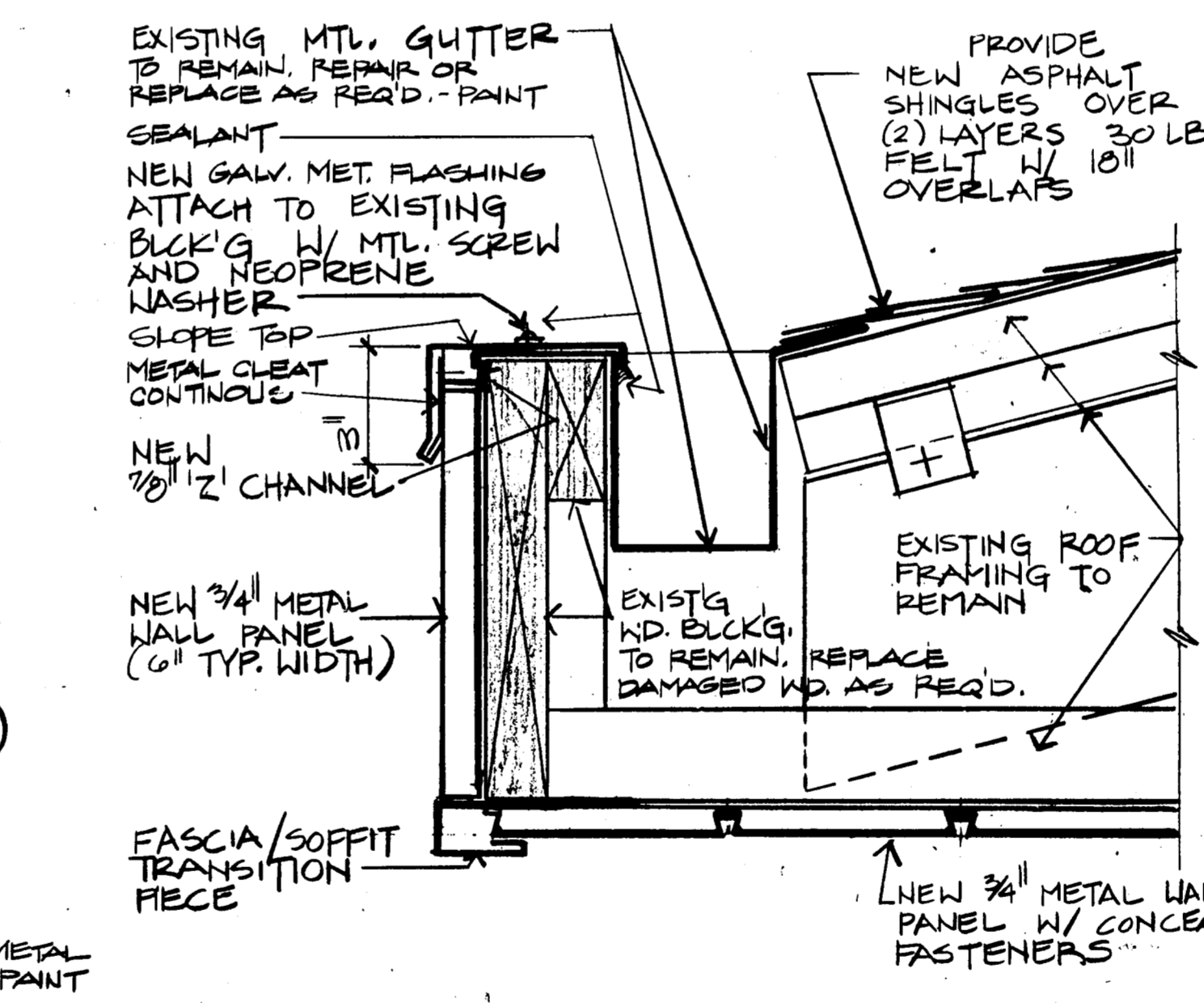
CONDUIT CHASE 3/8"=1'-0" (7)



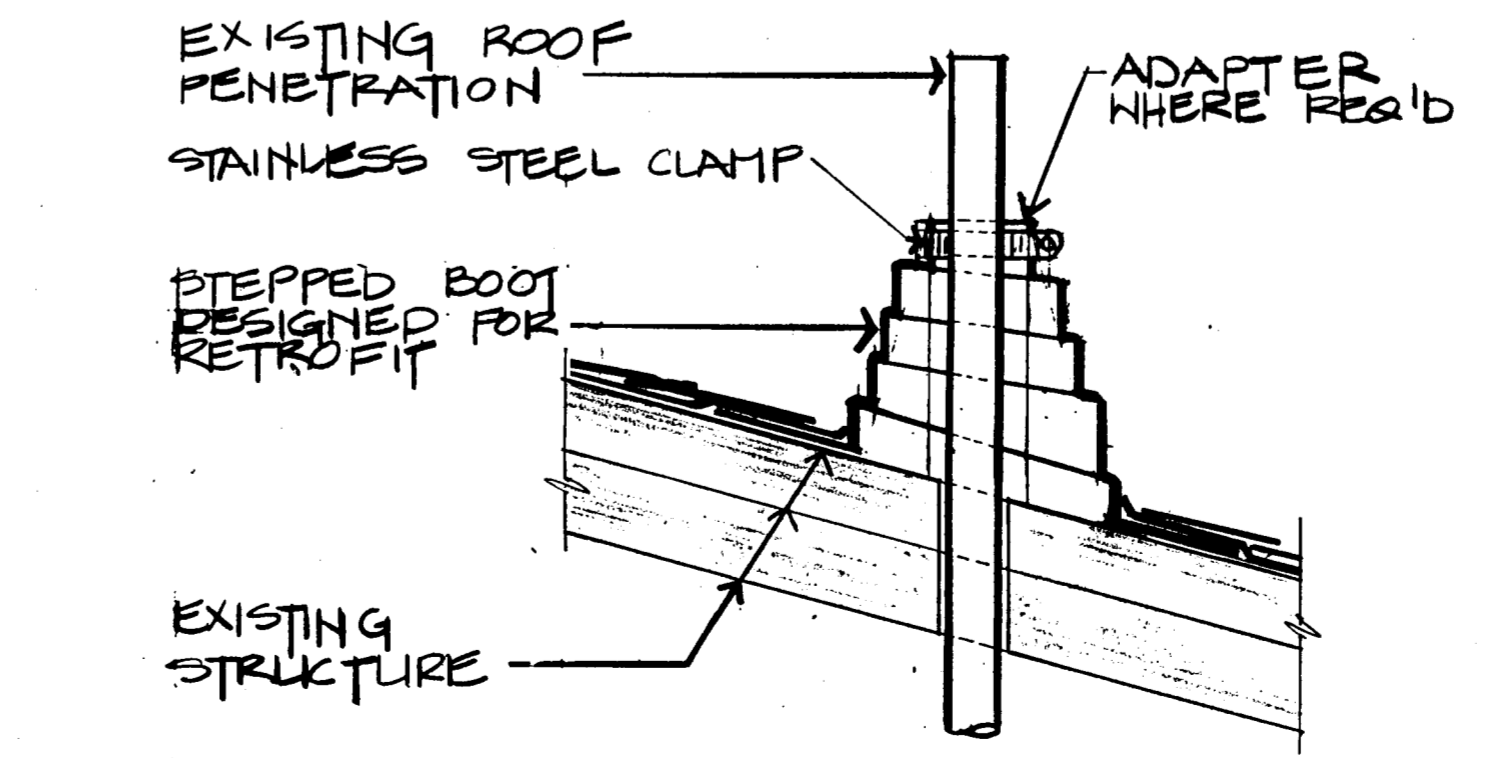
FASCIA DETAIL 3/8"=1'-0" (6)



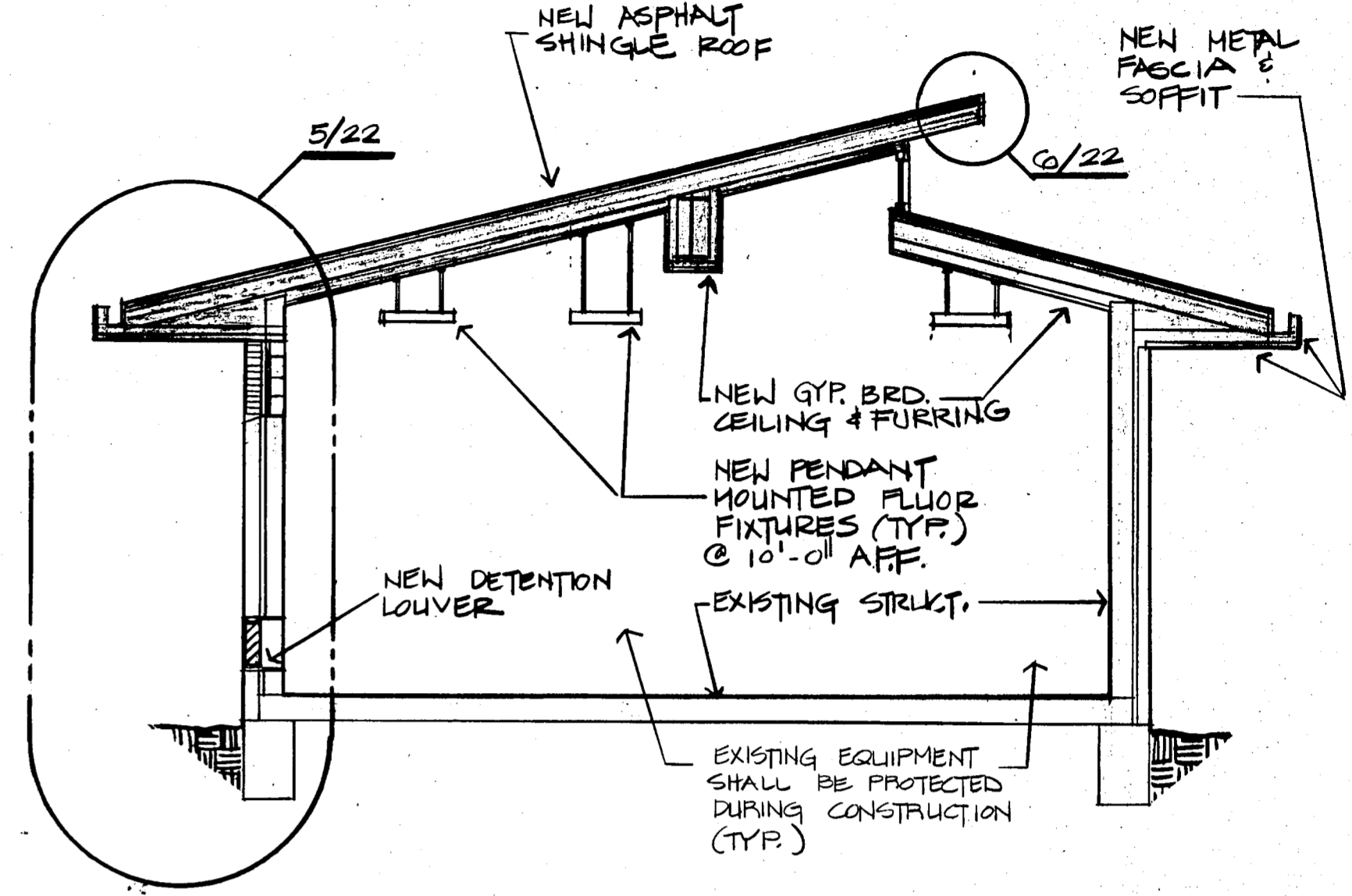
WALL SECTION 3/4"=1'-0" (5)



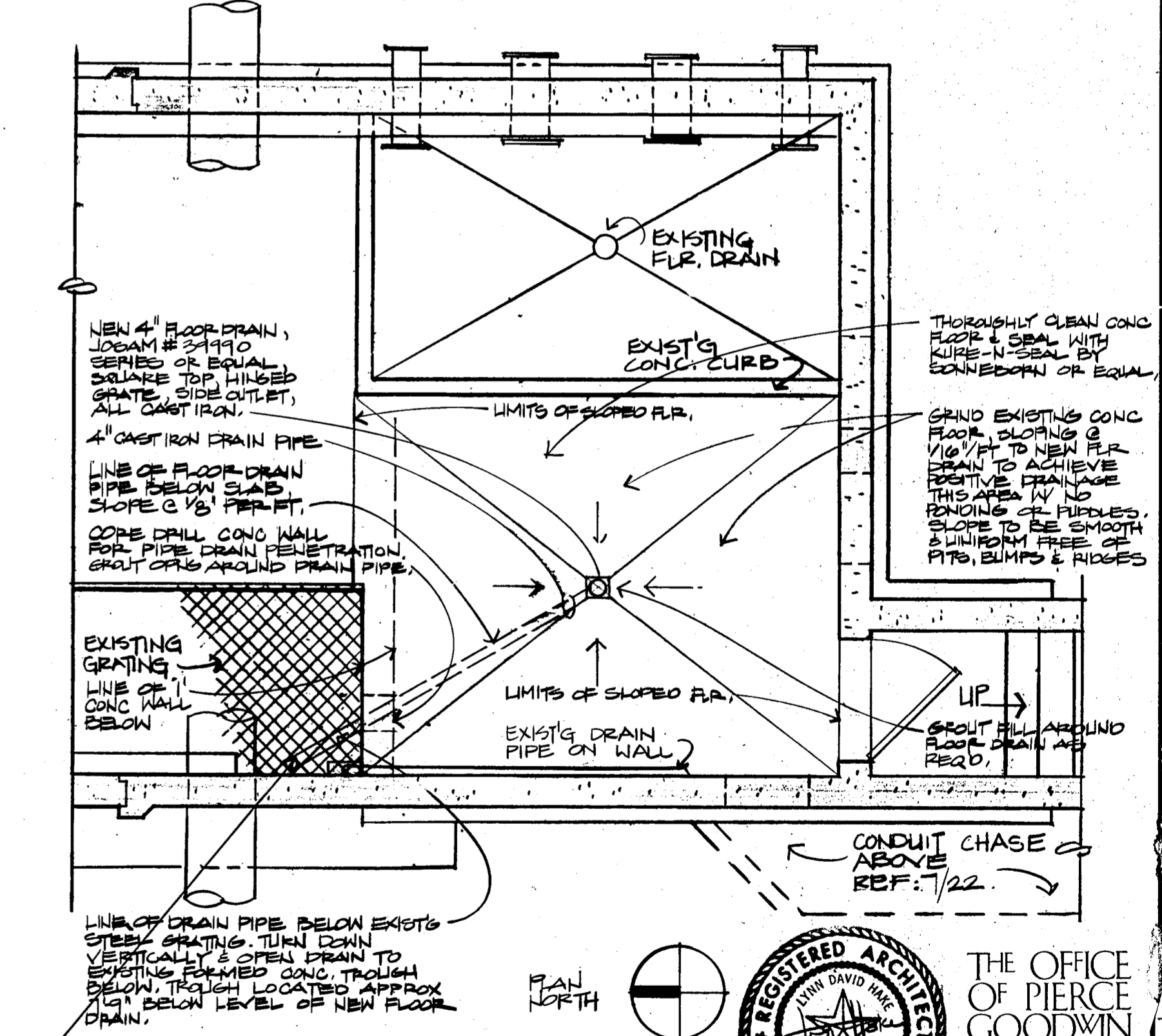
GUTTER DETAIL 3/8"=1'-0" (4)



ROOF PENETRATIONS 3/8"=1'-0" (3)



BUILDING SECTION 1/4"=1'-0" (2)



CONTROL ROOM PLAN 1/4"=1'-0" (1)

1. 4" DRAIN MUST CONNECT TO SANITARY SEWER.
2. 4" DRAIN MUST BE VENTED WITHIN 10' OF FLOOR DRAIN
3. UPC SEC 707 FLOOR DRAIN CONNECTED TO THE DRAINAGE SYSTEM AND SUBJECT TO IMPROPER USE SHALL BE PROVIDED WITH TRAP PRIMER.

BELTWOOD RESERVOIR EXPANSION

CONTROL HOUSE

SECTIONS & DETAILS

DALLAS WATER UTILITIES
CITY OF DALLAS, TEXAS

Turner Collier & Braden Inc.

DESIGN DRAWN TRACED CHECKED DATE

CONTRACT NO. 89-79

FILE NO. 630 Q.700

SHEET NO. 22 OF 44



NO.	DATE	REVISION	APPROVED