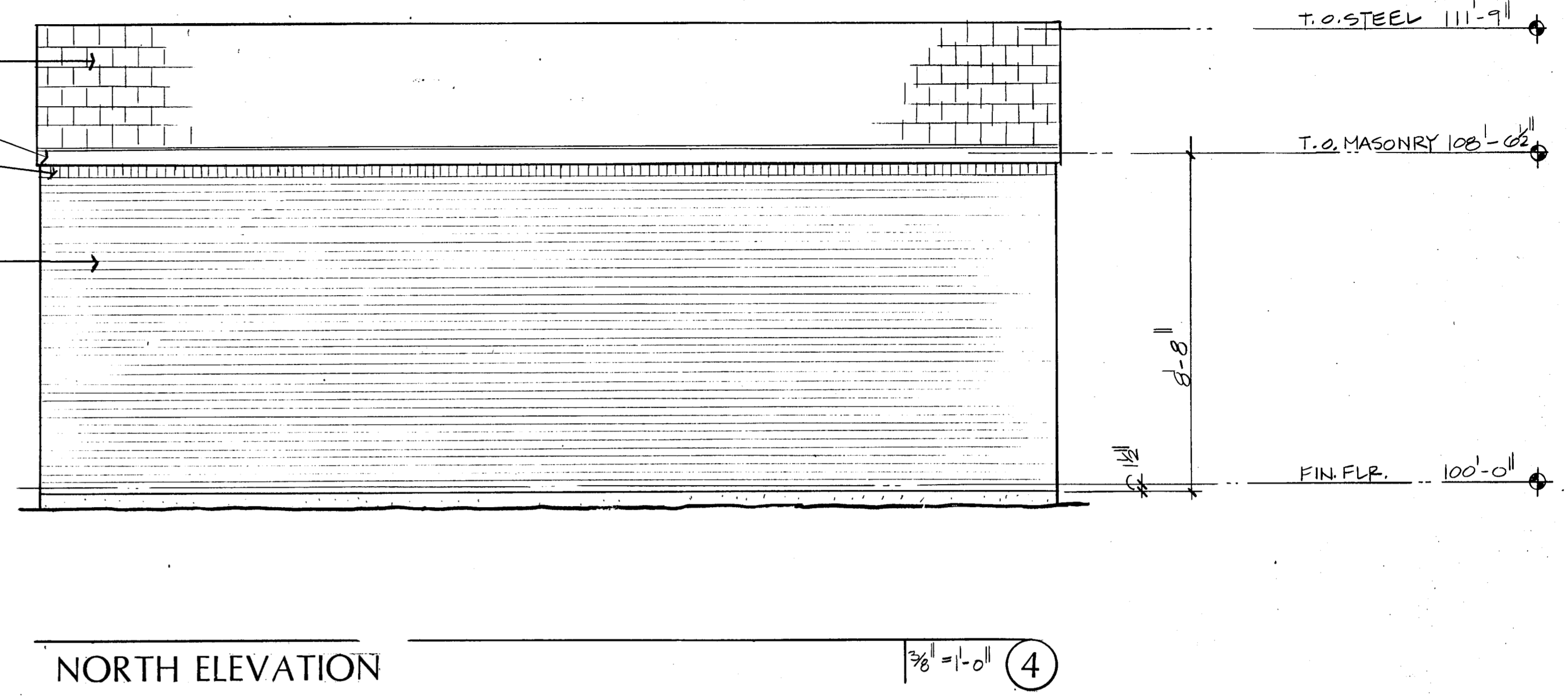


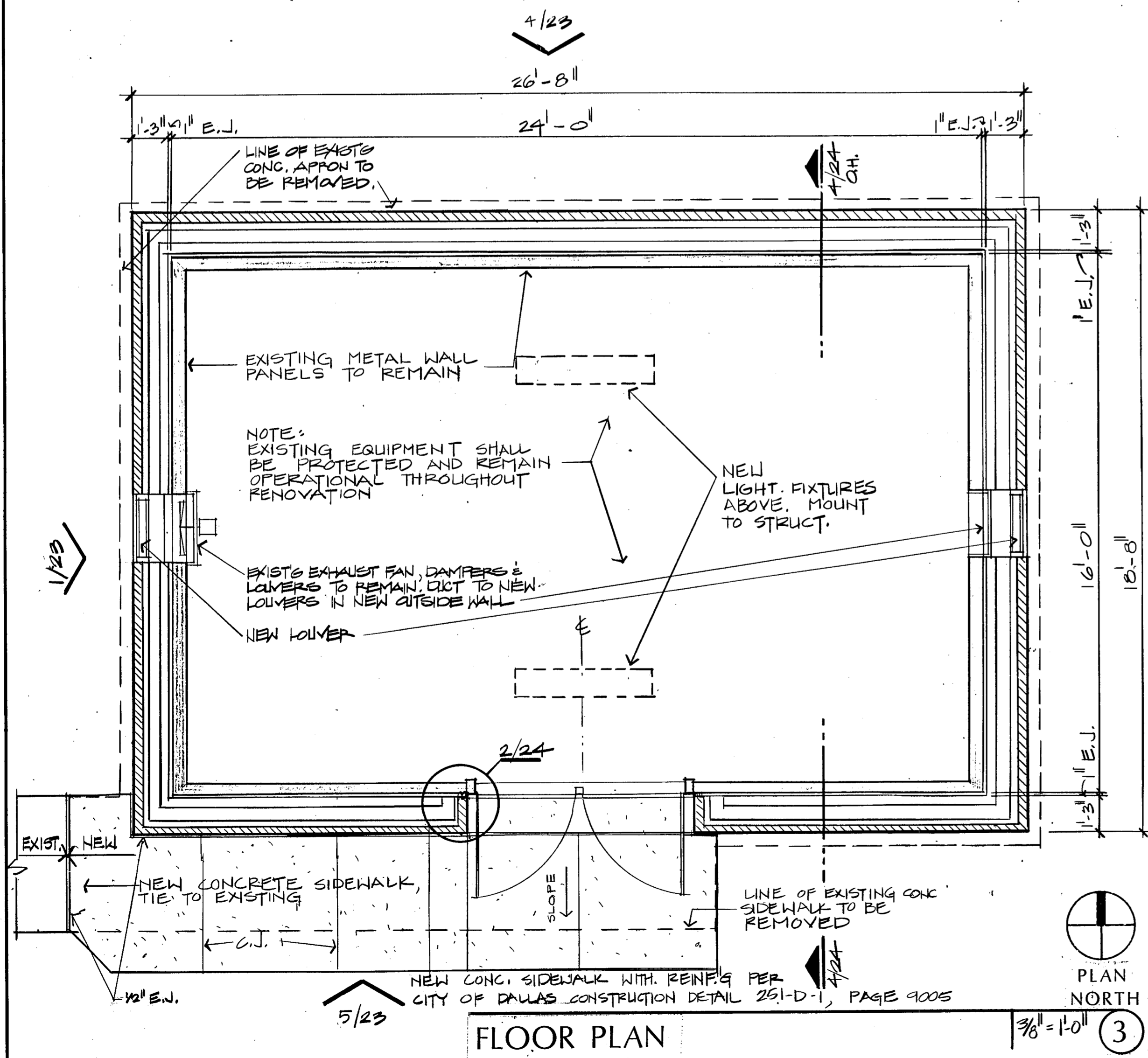
SOUTH ELEVATION

3/8" = 1'-0" (5)



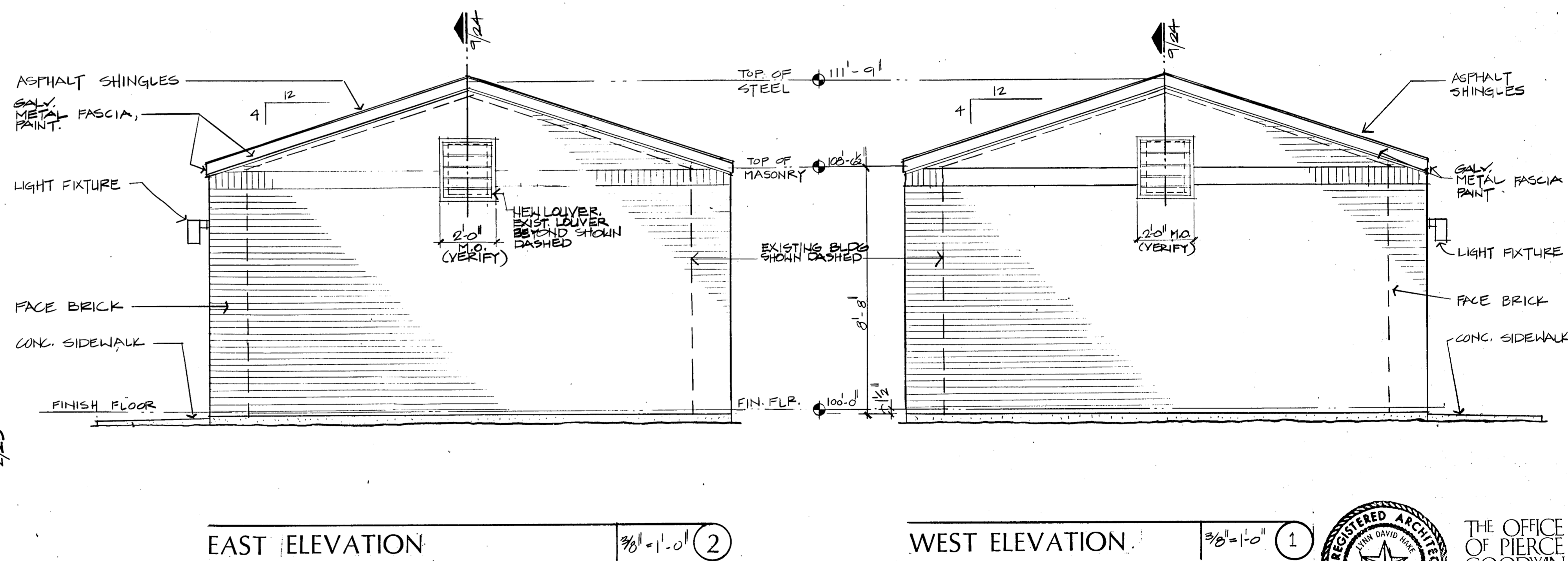
NORTH ELEVATION

3/8" = 1'-0" (4)



FLOOR PLAN

3/8" = 1'-0" (3)



EAST ELEVATION

3/8" = 1'-0" (2)

WEST ELEVATION

3/8" = 1'-0" (1)



THE OFFICE OF  
PIERCE  
GOODWIN  
ALEXANDER  
& LINVILLE

BELTWOOD RESERVOIR EXPANSION

ELECTRICAL SWITCHGEAR HOUSE  
FLOOR PLAN & ELEVATIONS

DALLAS WATER UTILITIES  
CITY OF DALLAS, TEXAS

TurnerCollie & Braden Inc.

DESIGN	CONTRACT NO.	89-79	SHEET NO.
DRAWN	FILE NO.	630 Q 700 F	23
TRACED			OF 44
CHECKED			
DATE			

NO.	DATE	REVISION	APPROVED