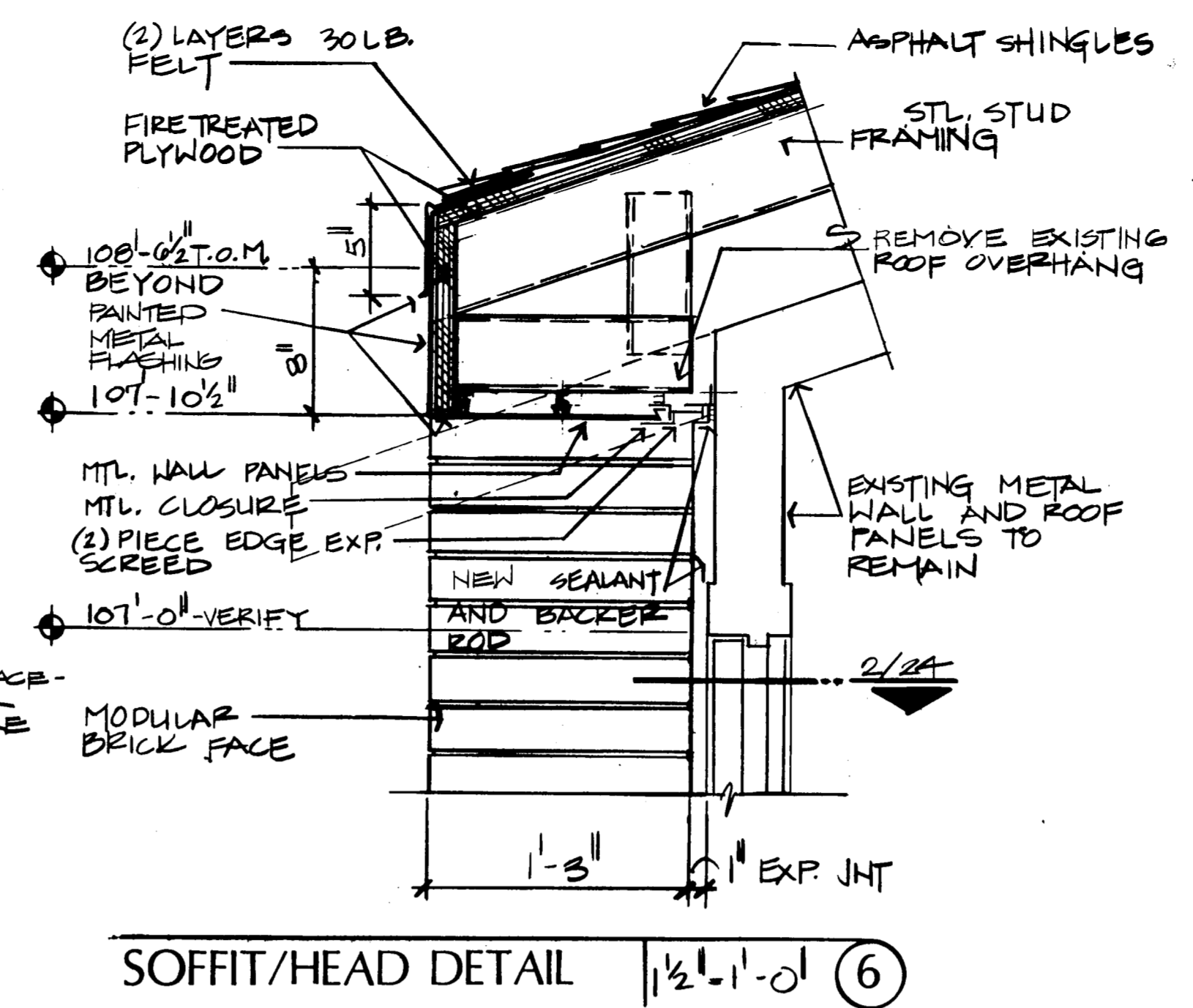
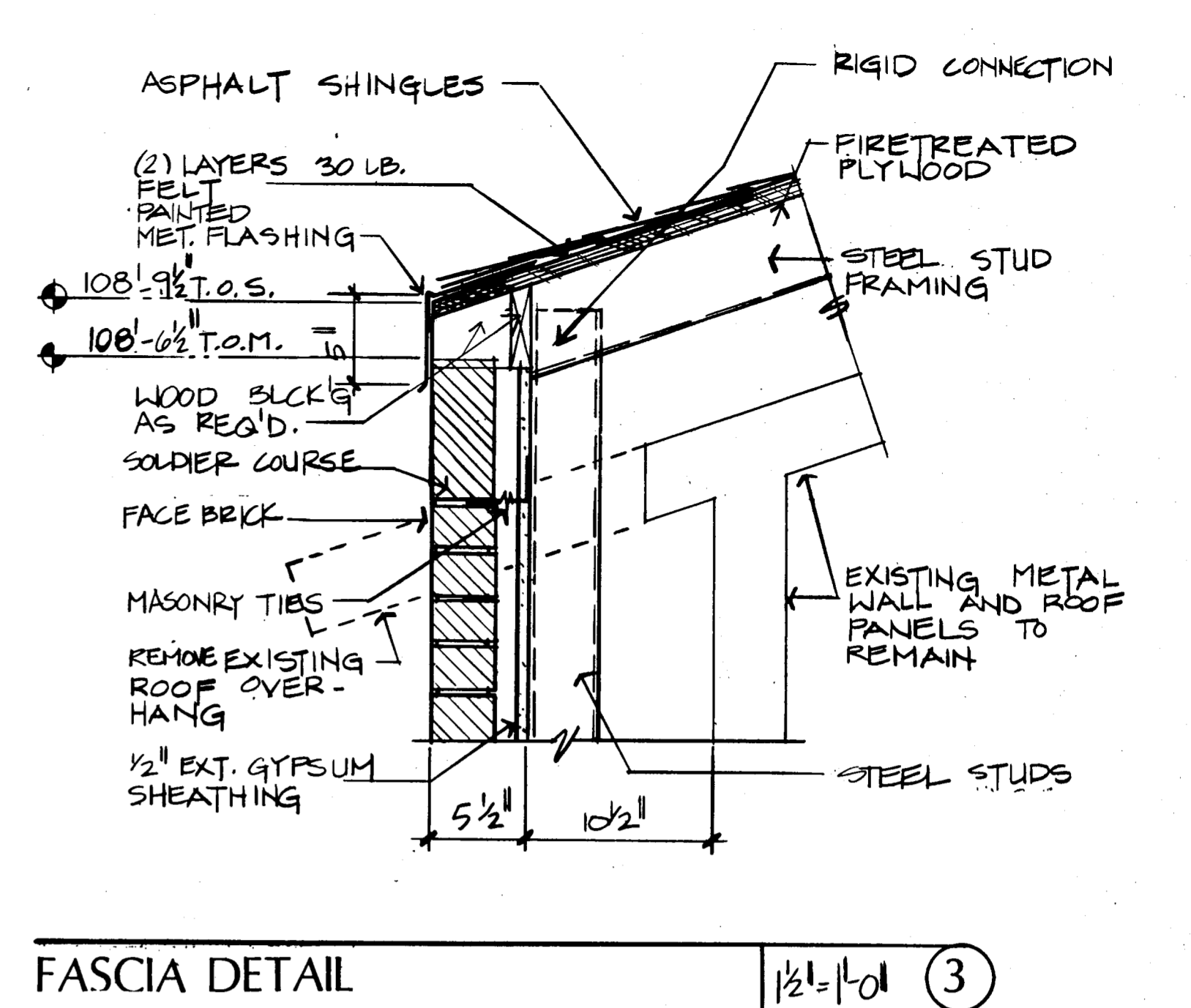


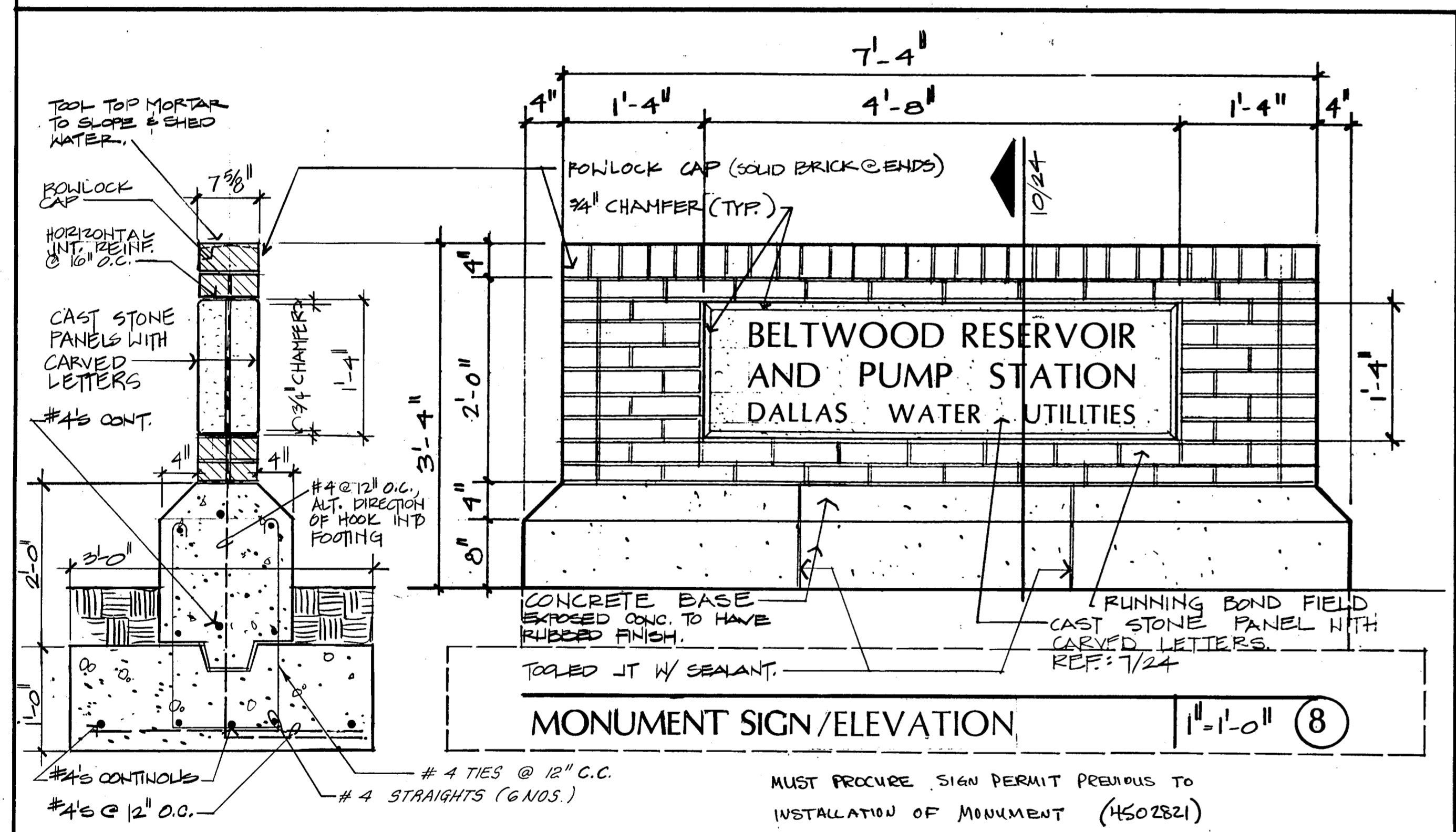
LOUVER DETAIL | 1/2" = 1'-0" | 9



SOFFIT/HEAD DETAIL | 1/2" = 1'-0" | 6

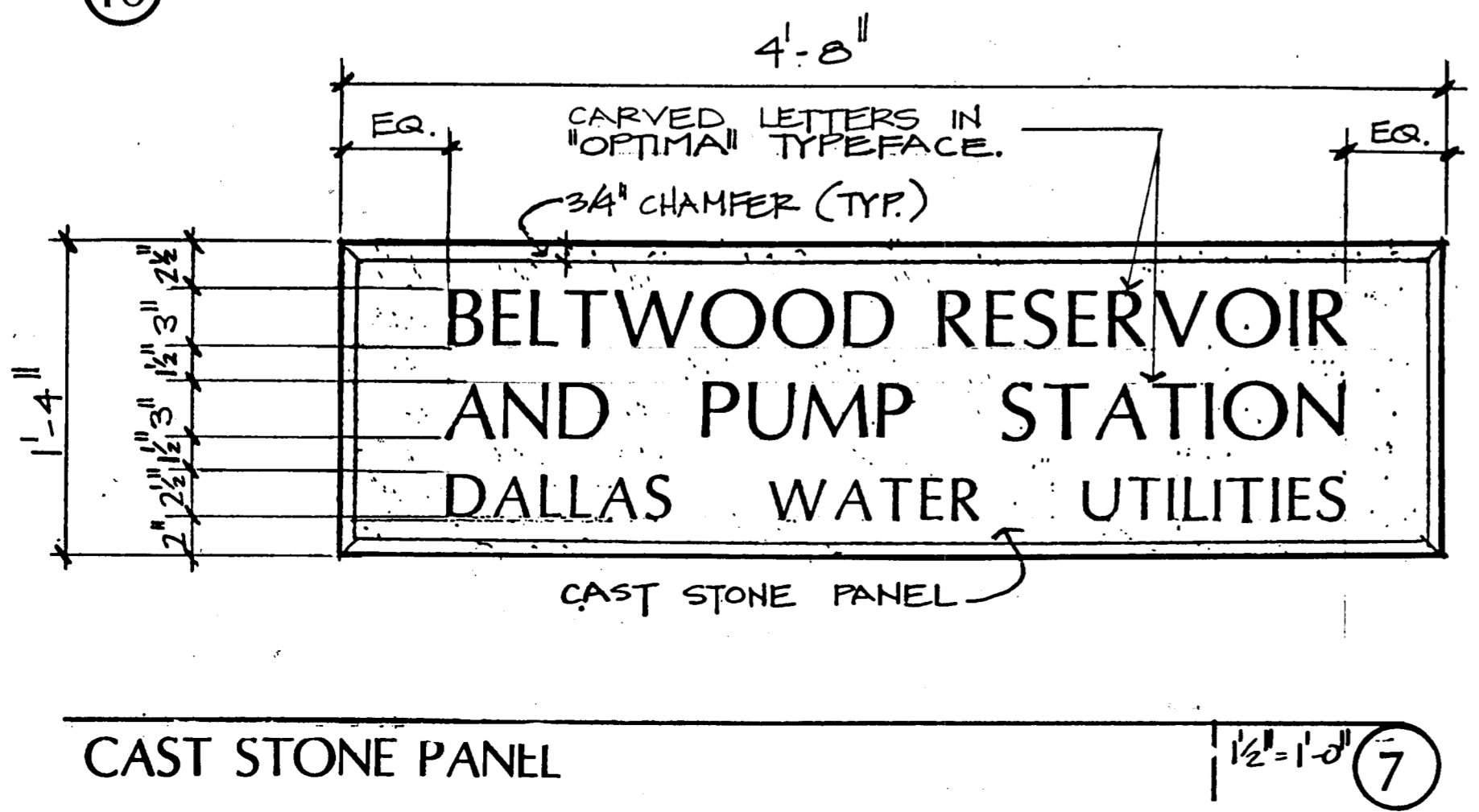


FASCIA DETAIL | 1/2" = 1'-0" | 3

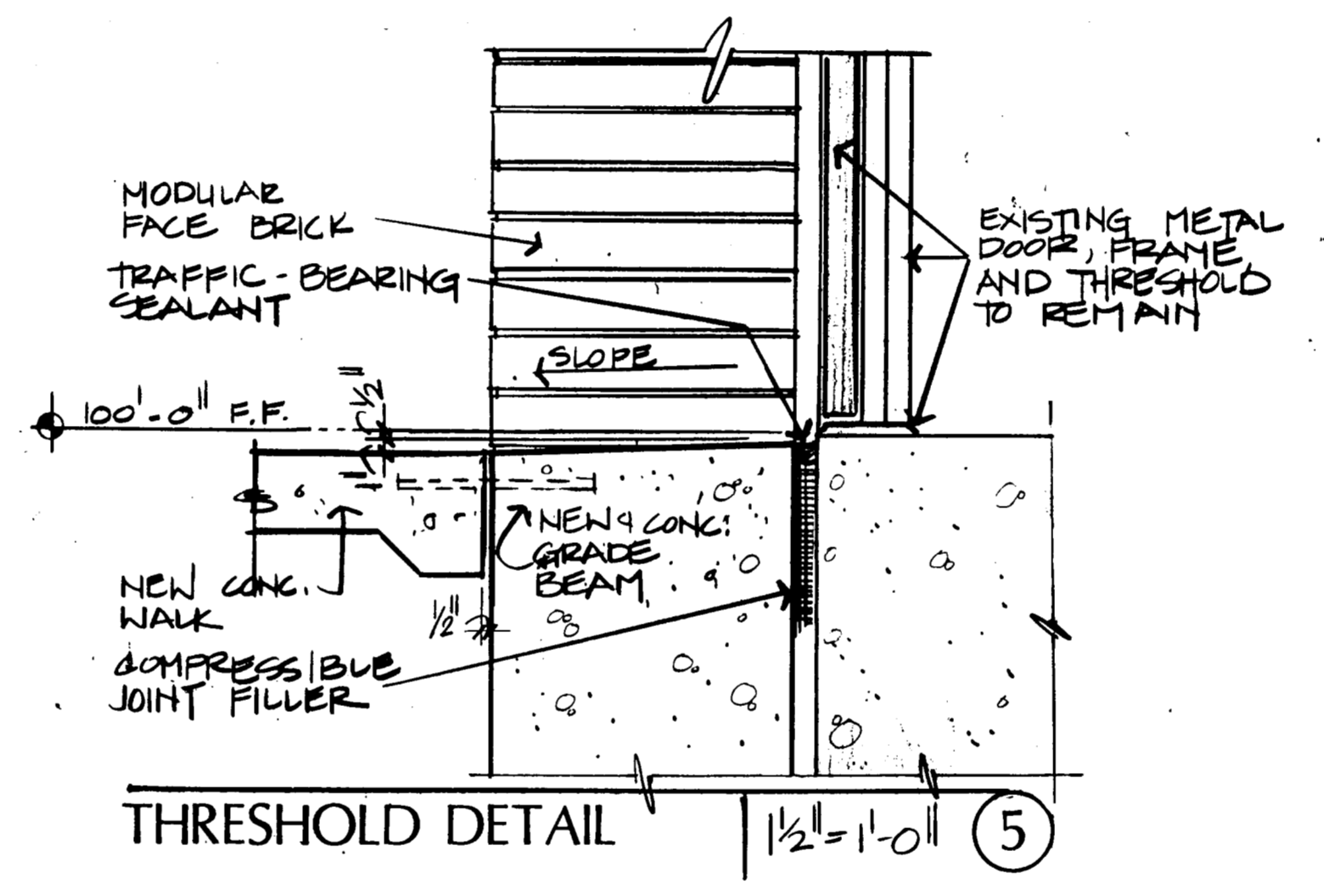


MONUMENT SIGN/ELEVATION | 1" = 1'-0" | 8

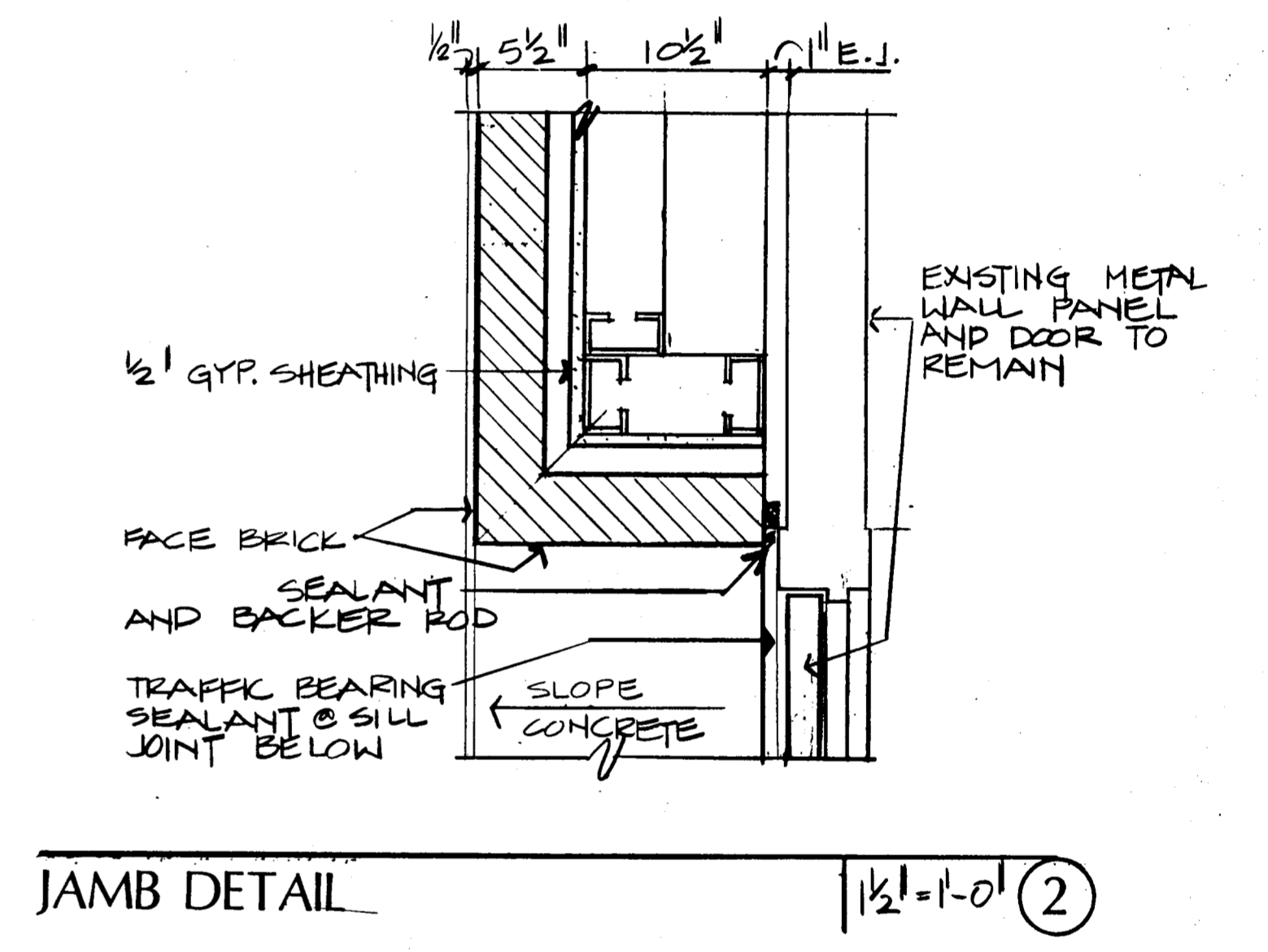
SECTION | 1" = 1'-0" | 10



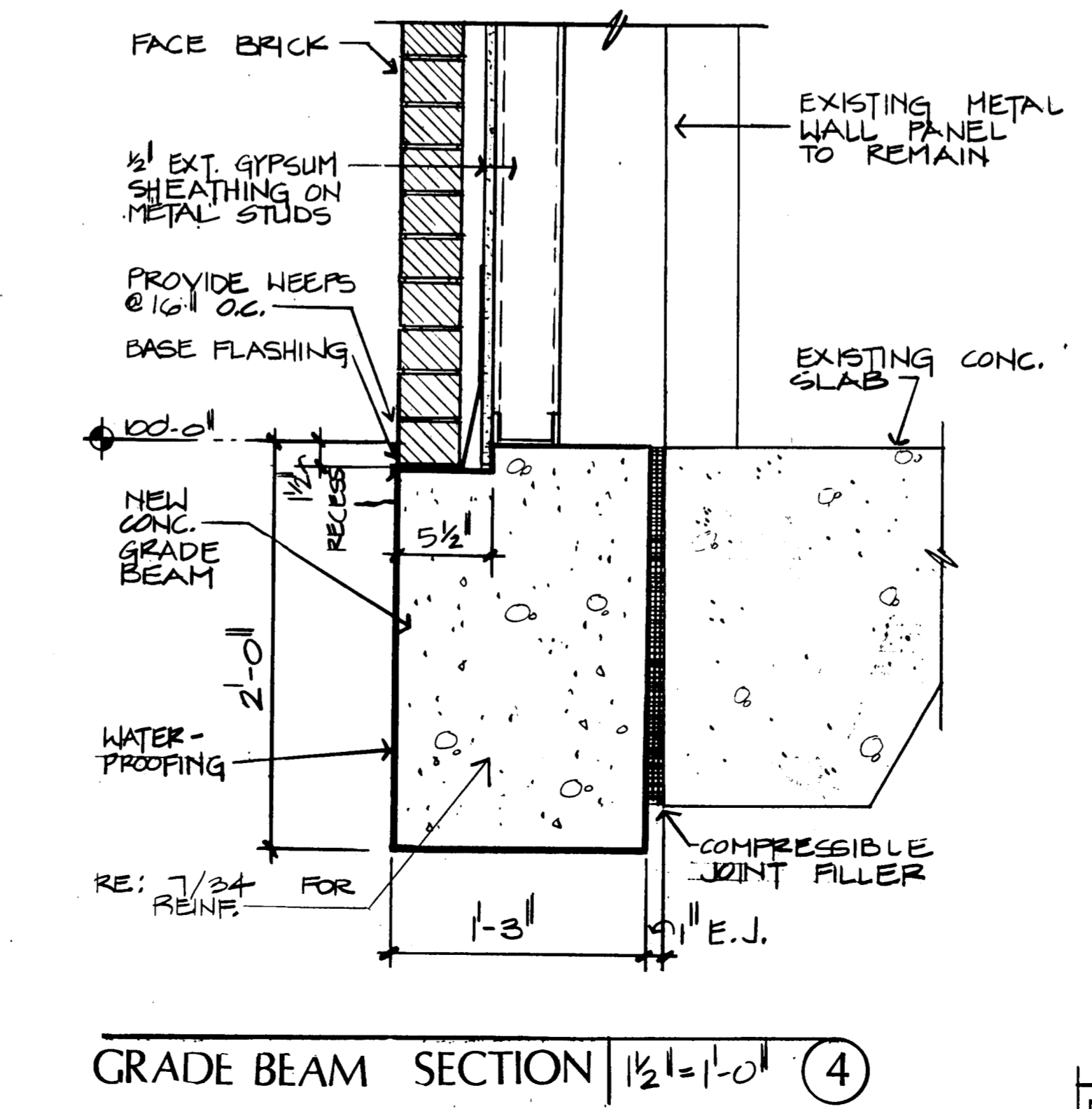
CAST STONE PANEL | 1/2" = 1'-0" | 7



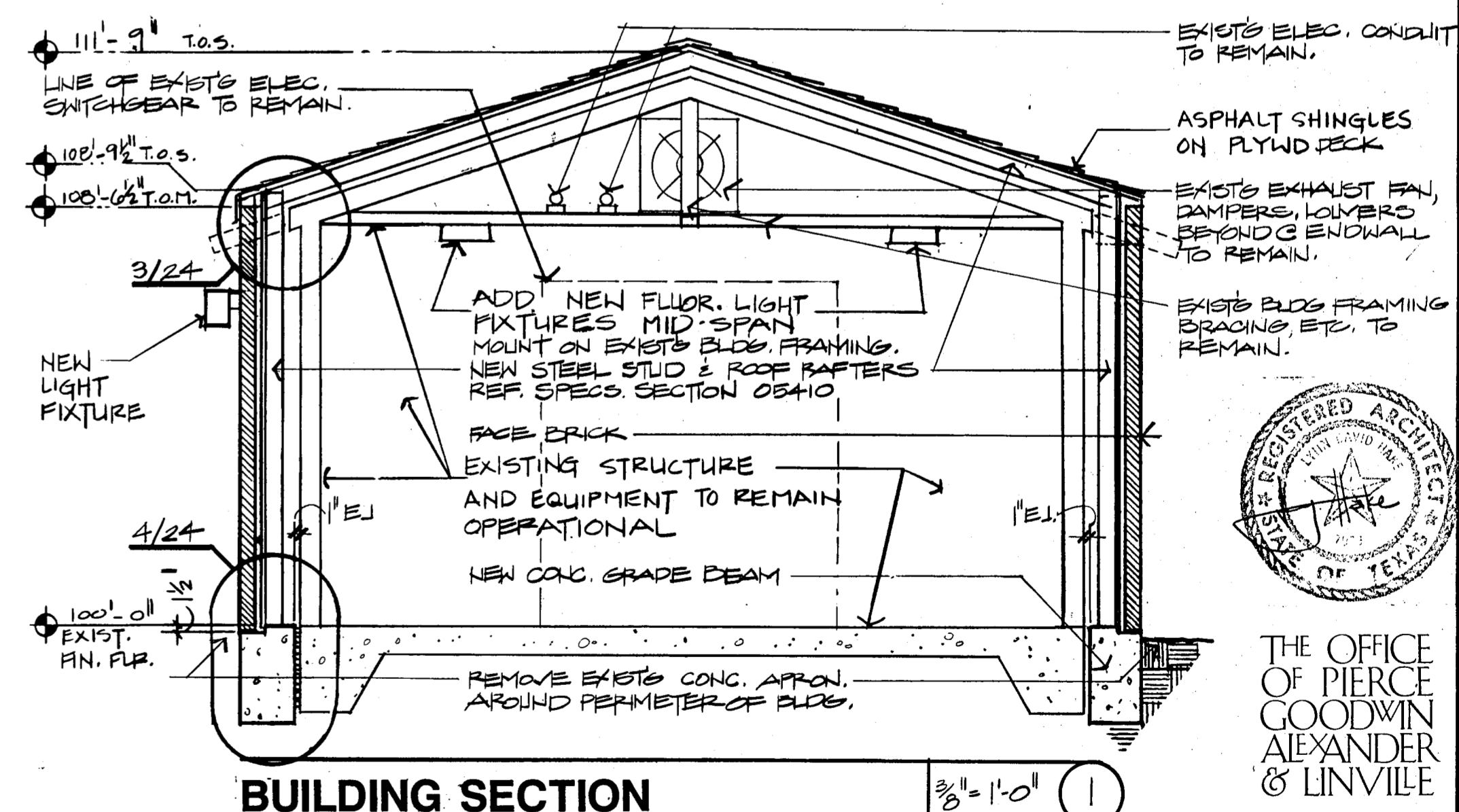
THRESHOLD DETAIL | 1/2" = 1'-0" | 5



JAMB DETAIL | 1/2" = 1'-0" | 2



GRADE BEAM SECTION | 1/2" = 1'-0" | 4



BUILDING SECTION | 3/8" = 1'-0" | 1



THE OFFICE OF
PIERCE
GOODWIN
ALEXANDER
& LINVILLE

BELTWOOD RESERVOIR EXPANSION	
ELECTRICAL SWITCHGEAR HOUSE/SECTIONS & DETAILS	
MONUMENT SIGN/ELEVATIONS & SECTIONS	
DALLAS WATER UTILITIES CITY OF DALLAS, TEXAS	
Turner Collie & Braden Inc.	
DESIGN	CONTRACT NO. 89-79
DRAWN	FILE NO. 630 Q 700 F
TRACED	SHEET NO. 24
CHECKED	OF 44
DATE	

NO.	DATE	REVISION	APPROVED