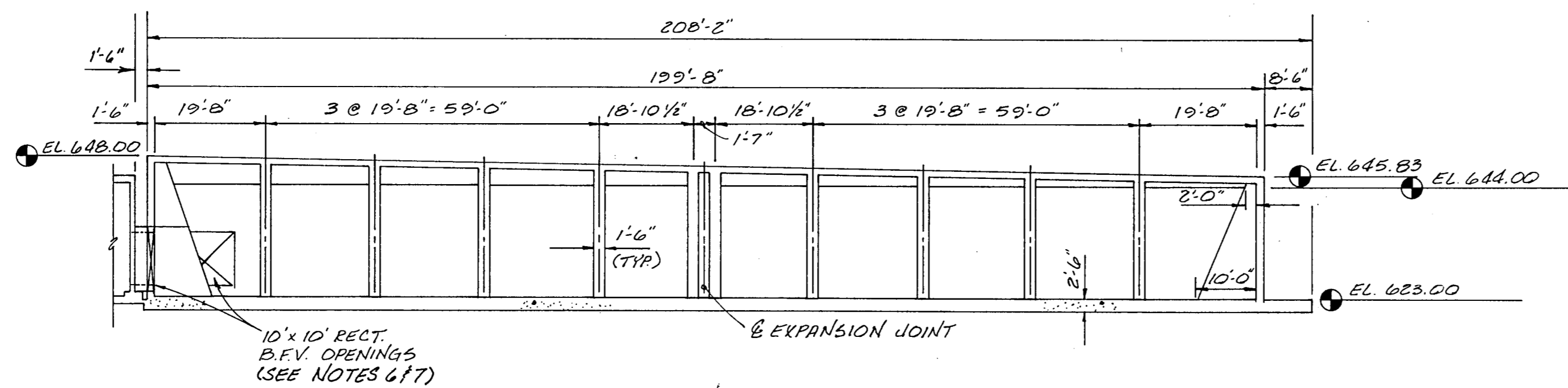


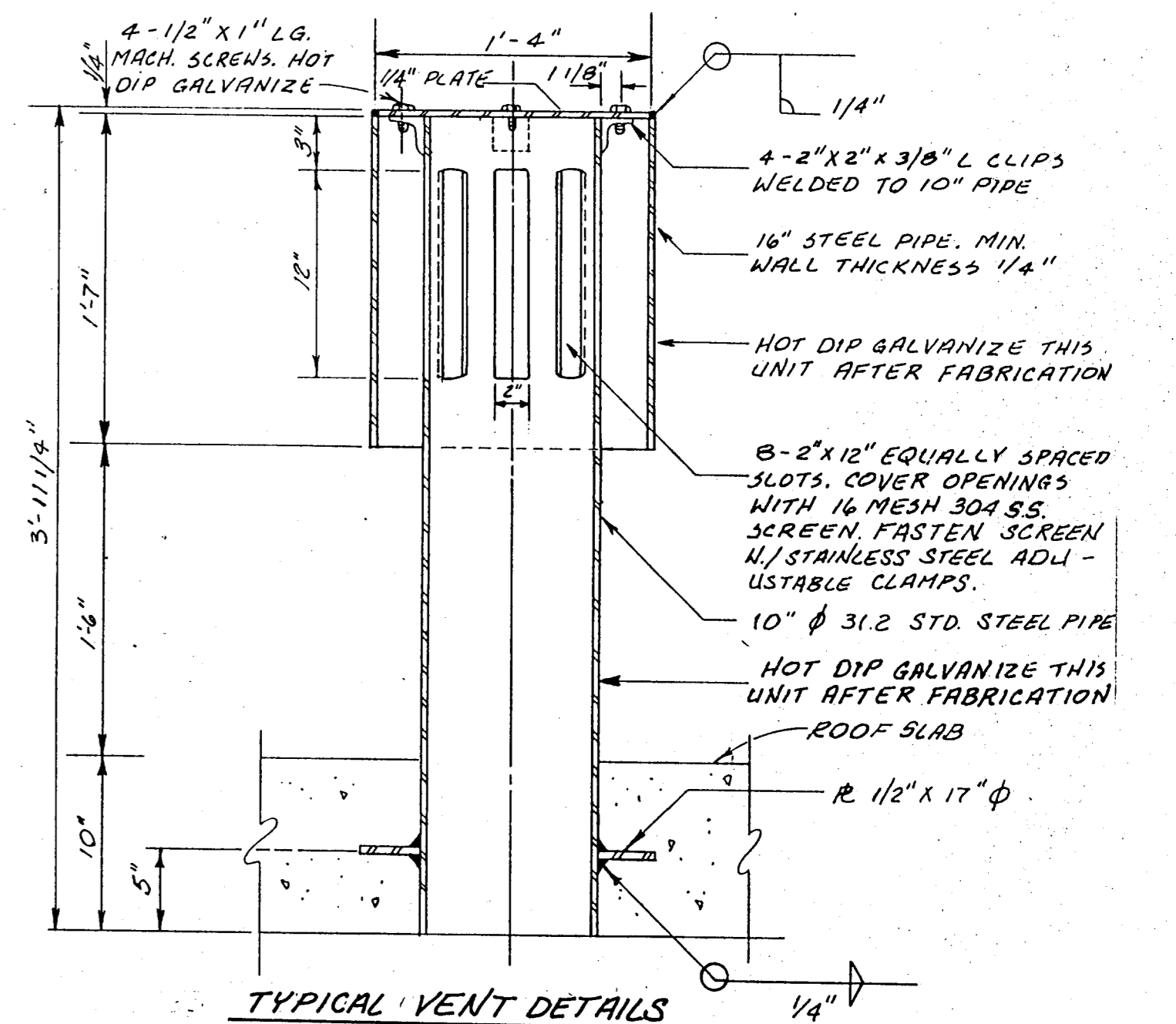
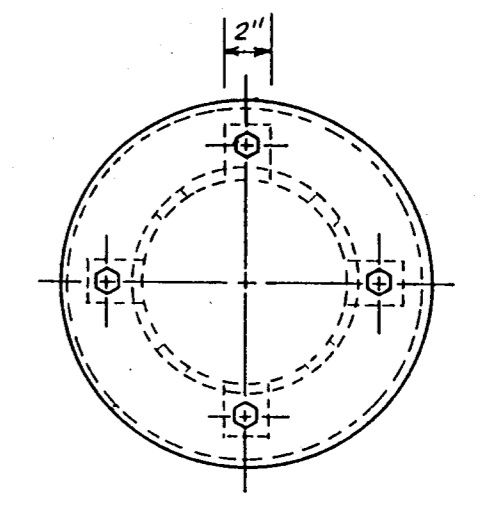
**ROOF LAYOUT**  
SCALE: 1"=20'



**SECTION**  
SCALE: 1"=20'

MANHOLE TABLE					
TYPE	SHAPE	OPENING DIMENSIONS	SEAL	HATCH TYPE	MANHOLE TYPE
1	ROUND	24" Ø	RUBBER GASKET	BOLTED LID	NEENAH R-646-6L OR EQUAL
2	ROUND	6 1/2" Ø	RUBBER GASKET	BOLTED LID	NEENAH R-644-AL OR EQUAL
3	RECTANGULAR	29" X 71"	RUBBER GASKET	BUTT HINGE	NEENAH R-645-MP OR EQUAL

- NOTES:
- FOR STANDARD DETAILS AND STRUCTURAL NOTES, SEE SHEET 34 OF 44.
  - EXCAVATE WITHIN LIMITS OF PROPOSED RESERVOIR TO ROCK. EXCAVATED AREAS TO BE REPLACED WITH SELECT FILL PER SPECIFICATIONS.
  - CONTRACTOR TO COORDINATE WITH OWNER THE PERIOD OF TIME IN WHICH EXISTING RESERVOIR WILL BE OUT OF SERVICE.
  - 1" EXPANSION JOINT ACROSS ROOF SLAB AND VERTICAL WALLS.
  - CEMENT STABILIZED SAND TO BE PLACED BETWEEN EXISTING AND PROPOSED RESERVOIR.
  - INSTALL 10' X 10' RECTANGULAR BUTTERFLY VALVE IN ACCORDANCE WITH SPECIFICATION ITEM "RECTANGULAR BUTTERFLY VALVES" AND MANUFACTURER'S INSTRUCTIONS.
  - PAIN 10' X 10' RECTANGULAR BUTTERFLY VALVES IN ACCORDANCE WITH SPECIFICATION ITEM "RECTANGULAR BUTTERFLY VALVES"
  - EXTENSION STEMS & APPURTENANCES FOR VALVE OPERATORS SHALL BE TYPE 18-8, 304 STAINLESS STEEL.



**TYPICAL VENT DETAILS**  
N.T.S.  
DETAIL 3



BELTWOOD RESERVOIR EXPANSION  
**RESERVOIR ROOF LAYOUT**

DALLAS WATER UTILITIES  
CITY OF DALLAS, TEXAS

**Turner Collier & Braden Inc.**

DESIGN: F.R.W.  
DRAWN: G.A.  
TRACED:  
CHECKED:  
DATE: 5/89

CONTRACT NO. 89-79  
FILE NO. 630 Q 700 F

SHEET NO. 26  
OF 44