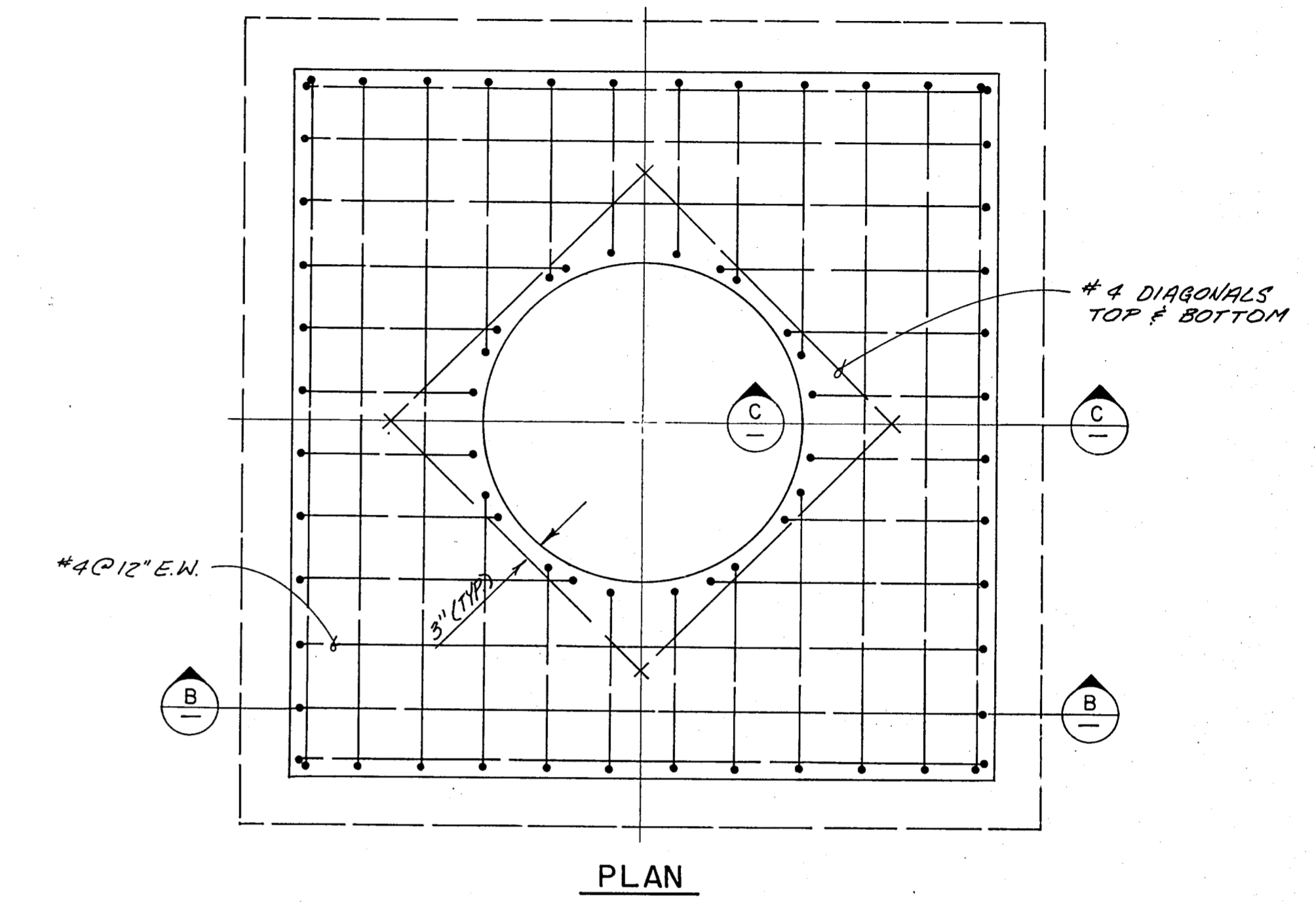
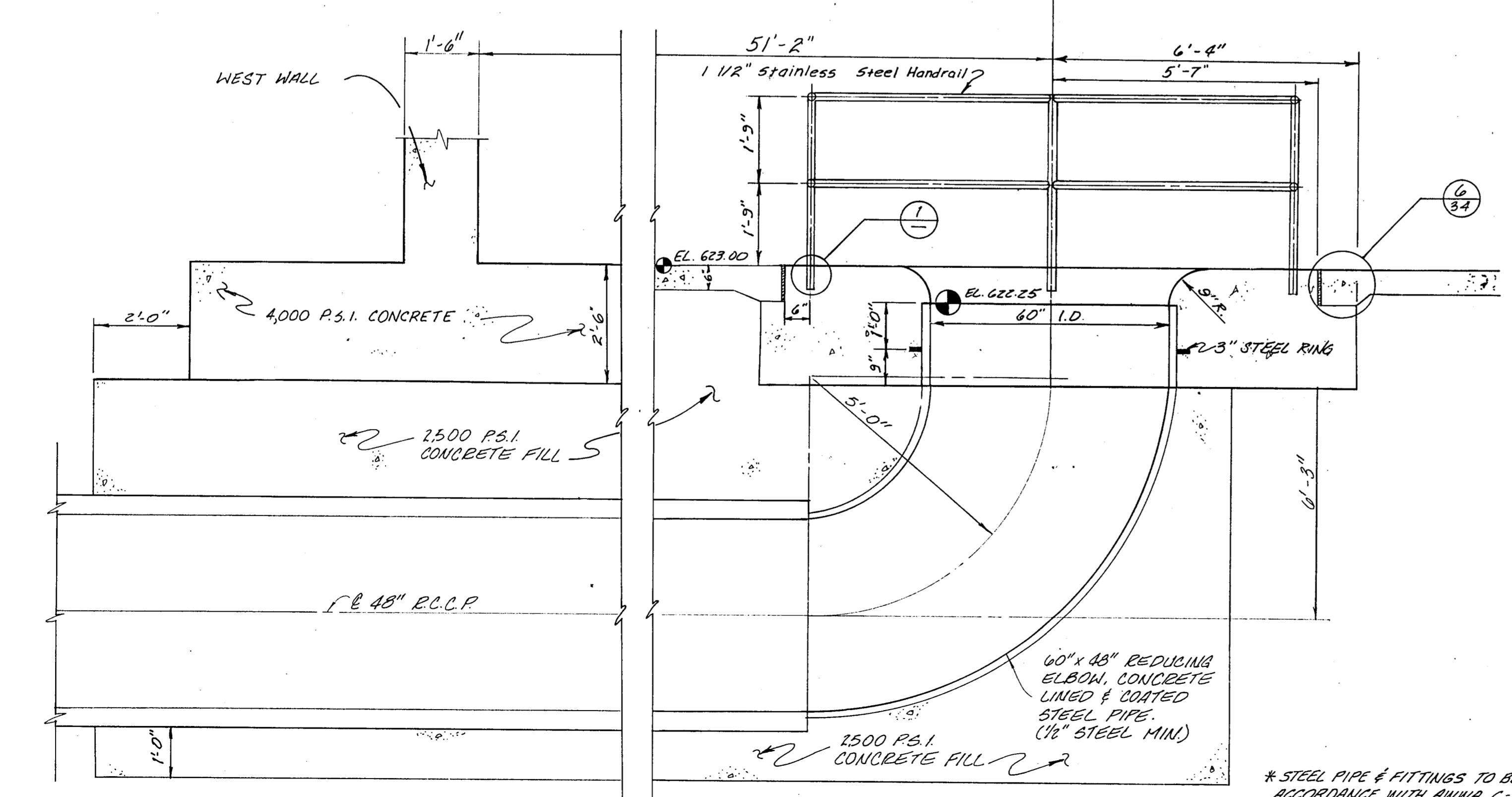


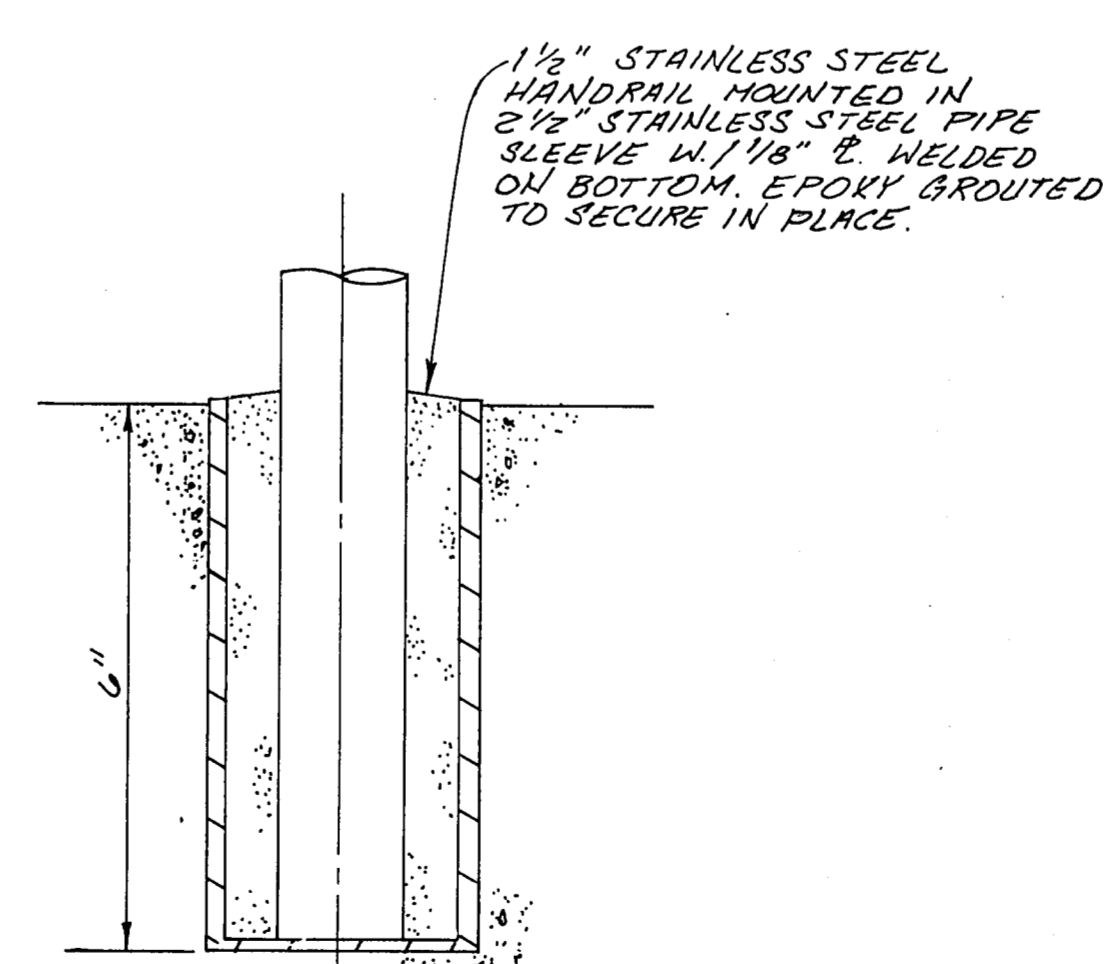
DETAIL
SCALE: 1/2" = 1'-0"



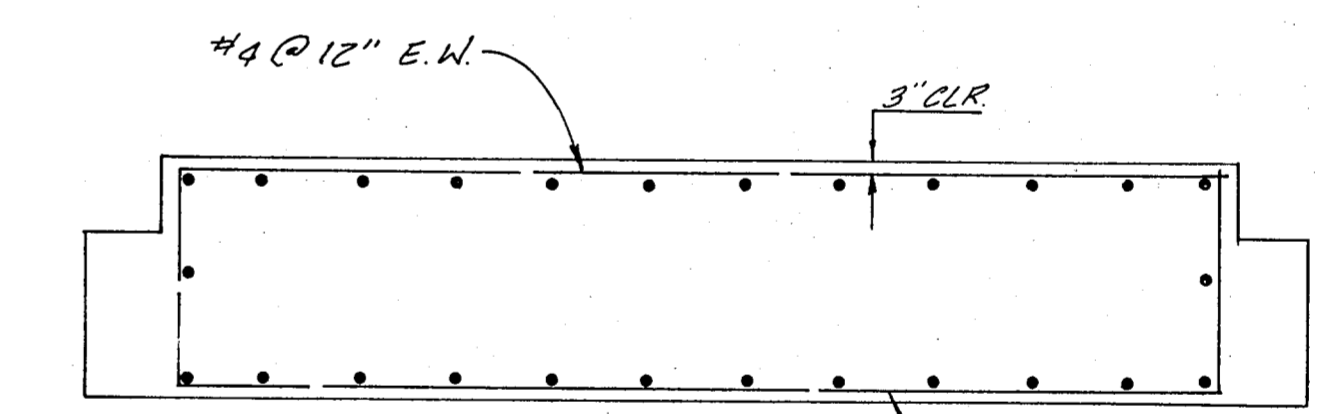
RESERVOIR INLET REINFORCEMENT



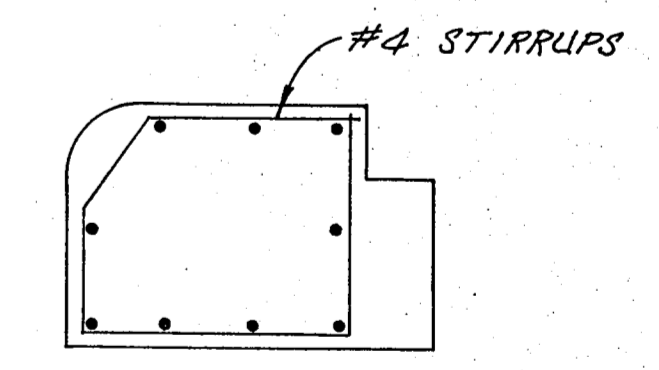
SECTION
SCALE: 1/2" = 1'-0"



DETAIL
N.T.S.

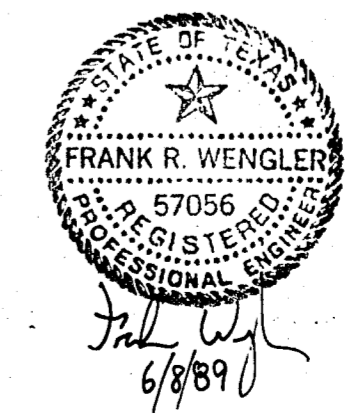


SECTION B



SECTION C

* STEEL PIPE & FITTINGS TO BE IN ACCORDANCE WITH ANWWA C-200 & ANWWA C-208. COATING TO BE PER ANWWA C-205



NO.	DATE	REVISION	APPROVED
BELTWOOD RESERVOIR EXPANSION			
RESERVOIR - 48" Ø INLET CONNECTION			
DALLAS WATER UTILITIES CITY OF DALLAS, TEXAS			
Turner Collier & Braden Inc.			
DESIGN	F.R.W.	CONTRACT NO.	89-79
DRAWN	G.A.	FILE NO.	630 Q 700 F
TRACED			
CHECKED			
DATE	5/89		
			SHEET NO. 35 OF 44