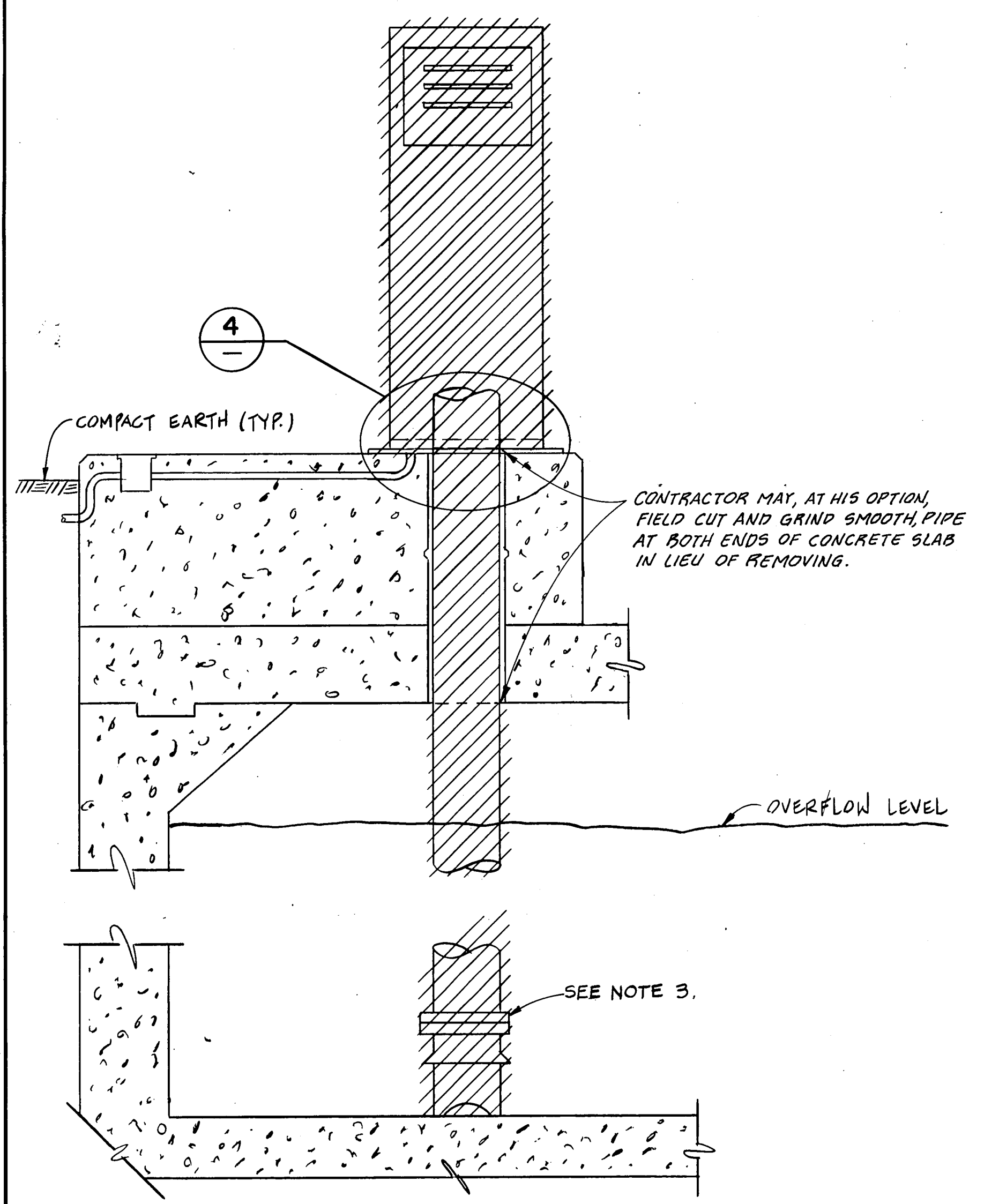
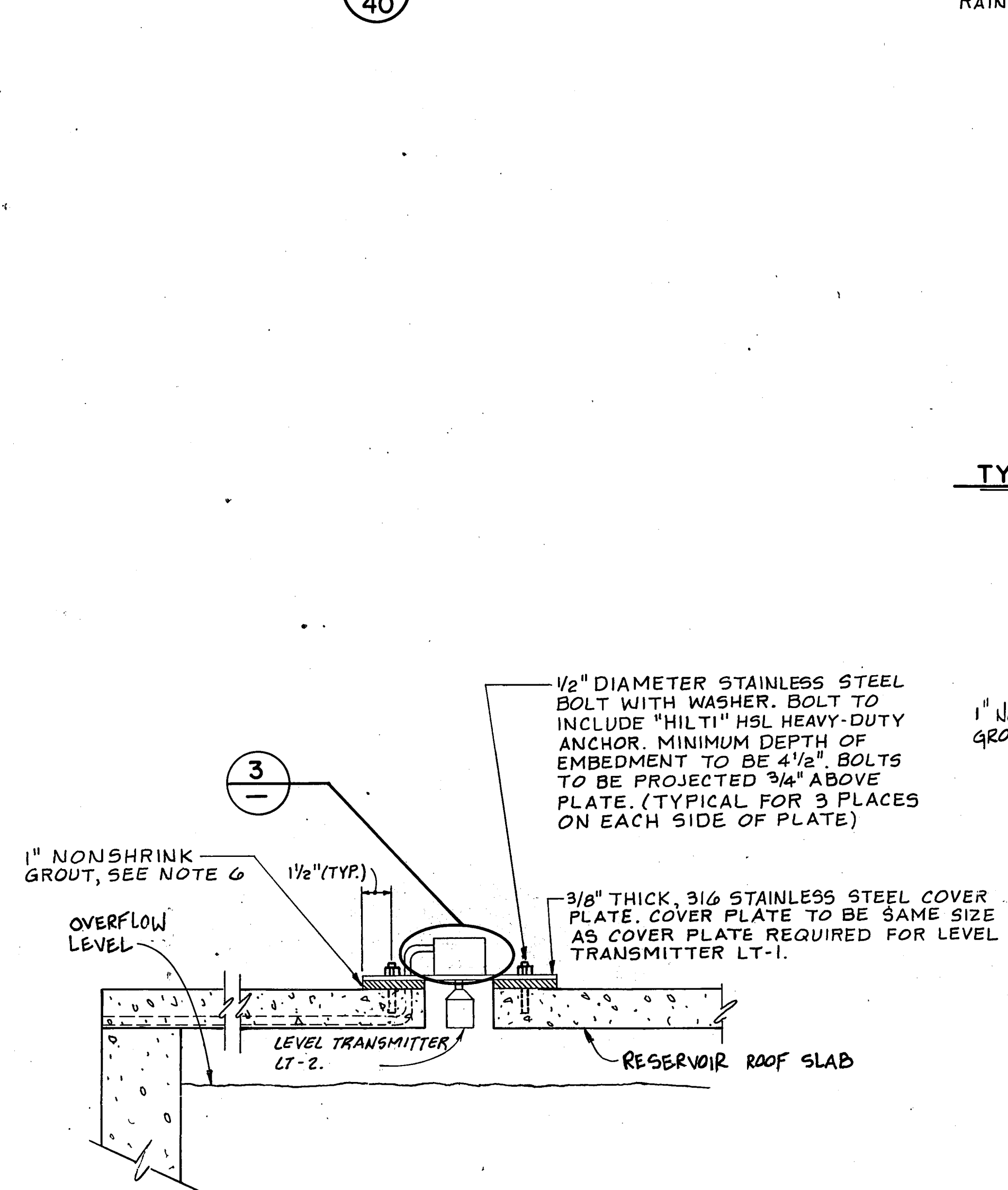


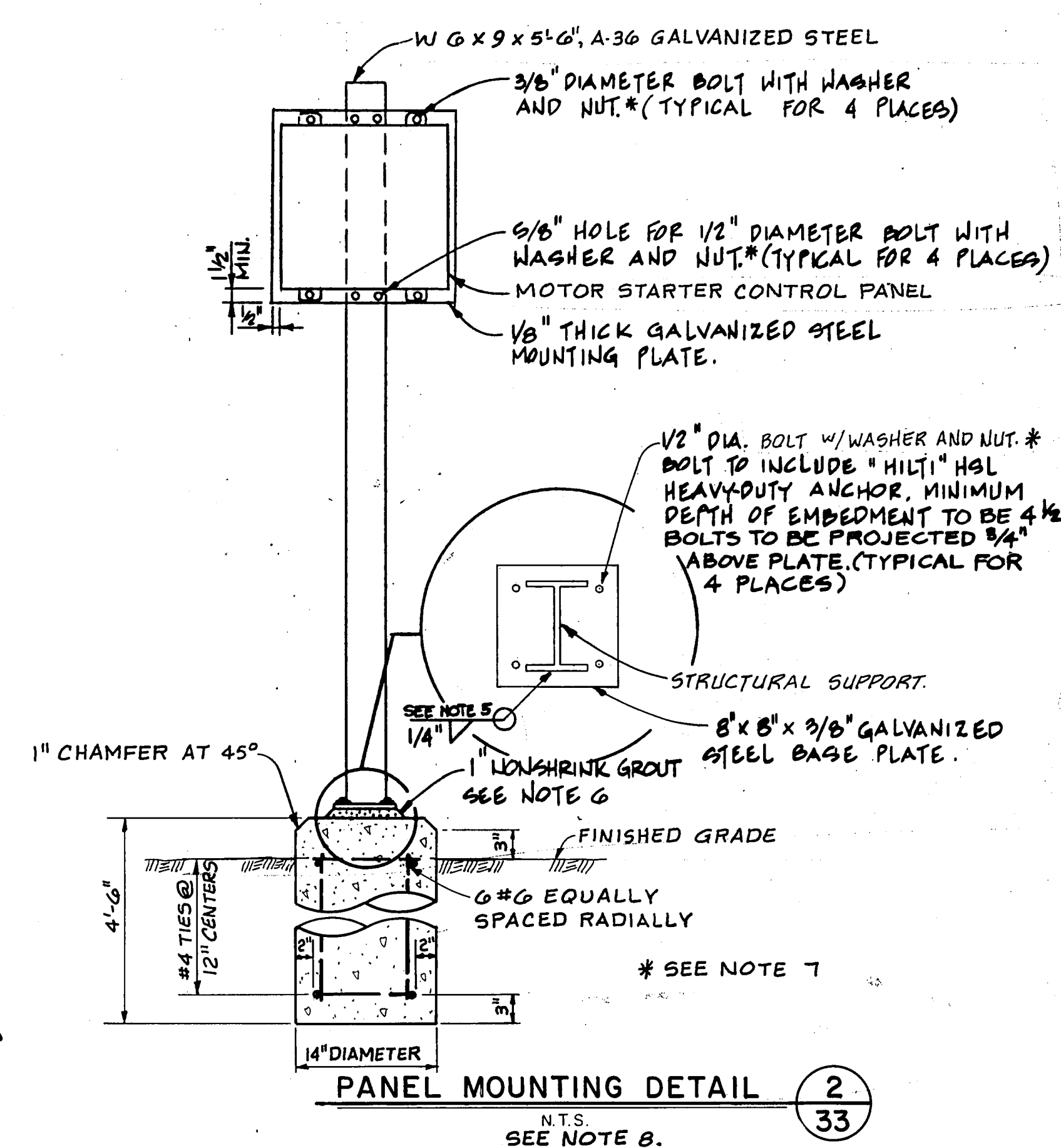
**LEVEL TRANSMITTERS AND AREA LIGHTS DETAIL** (1) 40  
N.T.S.



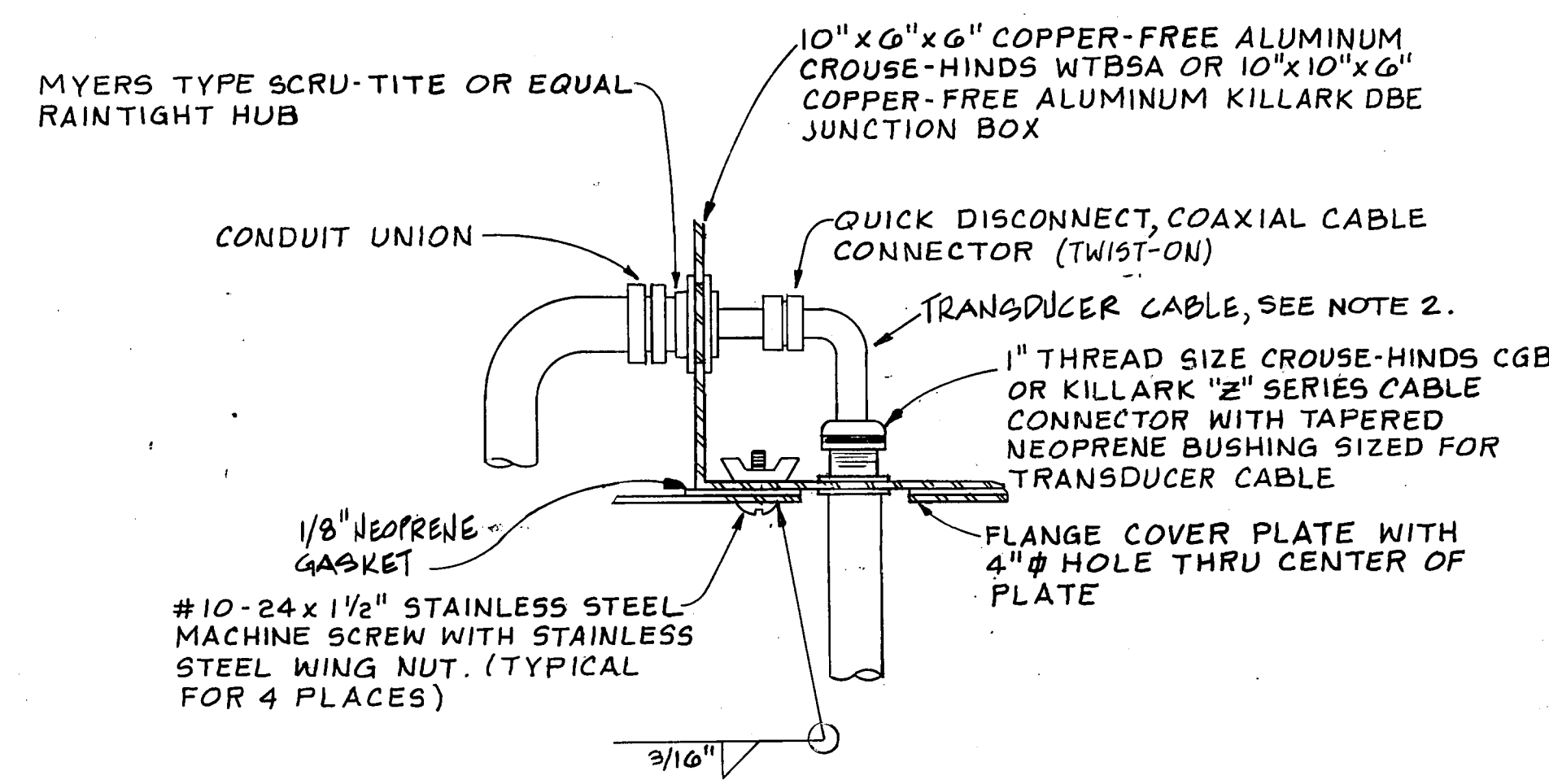
**SECTION "A-A"**  
N.T.S.



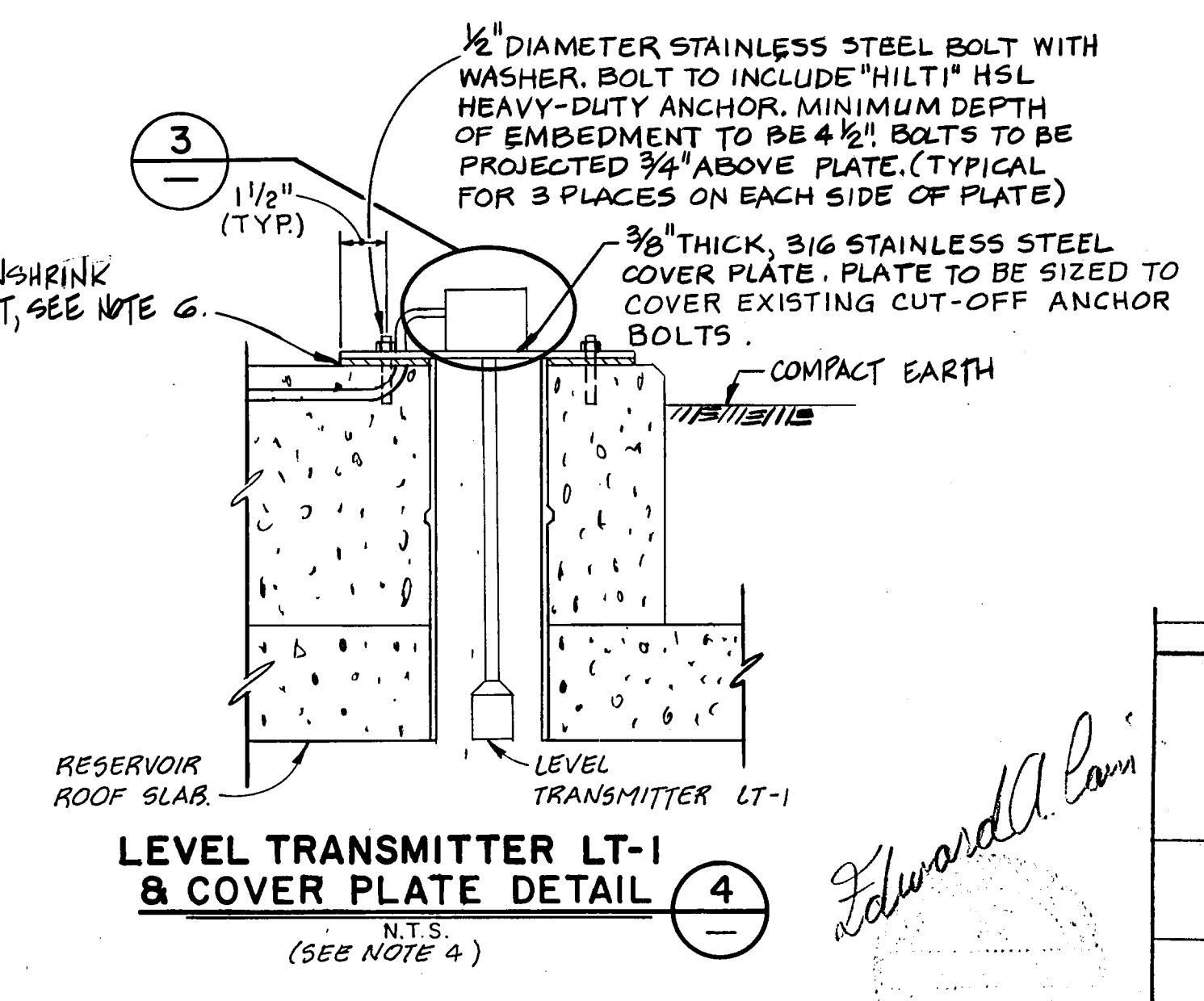
**SECTION "B-B"**  
N.T.S.



**PANEL MOUNTING DETAIL** (2) 33  
N.T.S. SEE NOTE 8.



**TYPICAL JUNCTION BOX AND CABLE MOUNTING DETAIL** (3) 34  
N.T.S. SEE NOTE 9.



**LEVEL TRANSMITTER LT-1 & COVER PLATE DETAIL** (4) 35  
N.T.S. (SEE NOTE 4)

- NOTES**
- Hole in proposed Ground Storage Reservoir GSR-2 for proposed Level Transmitter LT-1 to be same size as hole in existing Ground Storage Reservoir GSR-1 for existing float-actuated level transmitter. Proposed hole in GSR-2 to be located as a mirror image of existing hole in GSR-1.
  - Excess cable to be coiled in box.
  - Shaded equipment to be removed and to become property of City of Dallas Pumping Division.
  - Cover plate, Level Transmitter LT-1, and appurtenances to be installed as shown after removal of equipment referenced in Note 3.
  - All field welded steel to be recoated with "GALV-WELD" in accordance with manufacturer's recommendations.
  - Nonsink grout to be premixed nonmetallic, noncorrosive, and nonstaining. Grout to contain specially selected silicon sands, cement, shrinkage compensating agents, plasticizing and water reducing agents. Grout to conform to requirements of Corps of Engineers CRD-C588 Test Method CRD-C-589. Grout to have minimum 28-day compressive strength of 8,000 psi. Grout to be prepared and placed according to grout manufacturer's specifications maintaining grout temperature during placement between 50°F and 90°F. Manufacturer and type to be U.S. Grout Corporation, Five Star epoxy grout or equal.
  - Bolt, washer, and nut to be stainless steel.
  - Detail is applicable to Motor Starter Control Panels MSCP-V3 and MSCP-V4.
  - Junction box to be ordered with factory drilled holes as required. Holes to be tapped when required. Hole to be cut in center of plate as shown and to be ground smooth.

NO.	DATE	REVISION	APPROVED
BELTWOOD RESERVOIR EXPANSION			
ELECTRICAL DETAILS			
DALLAS WATER UTILITIES CITY OF DALLAS, TEXAS			
Turner Collier & Braden Inc.			
DESIGN	R.A.B.	CONTRACT NO.	89-79
DRAWN	M.H.	FILE NO.	630 Q 700 F
TRACED			
CHECKED			
DATE			
			SHEET NO. 43 OF 44

*Edward A. Pann*  
7/16/82