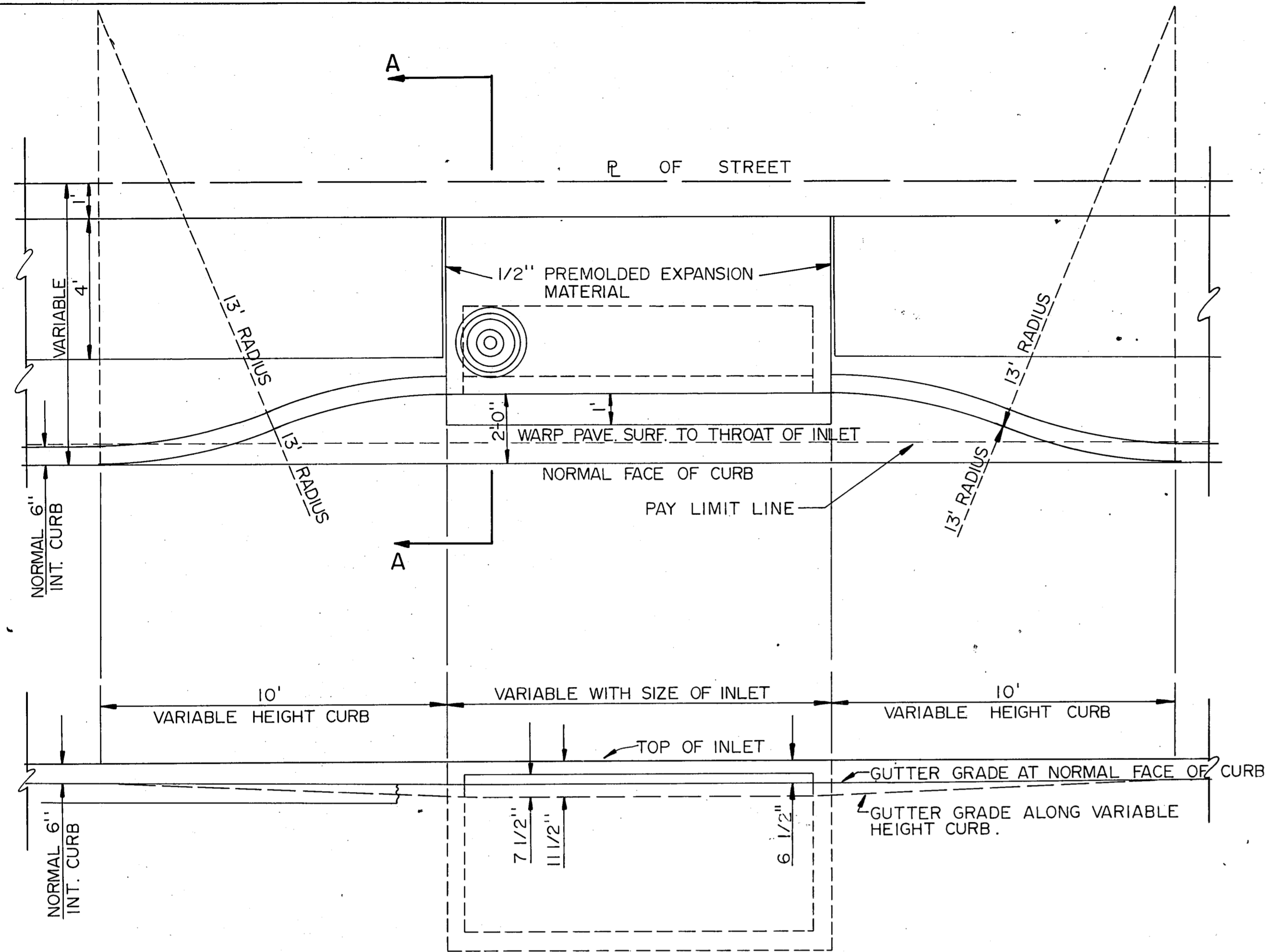
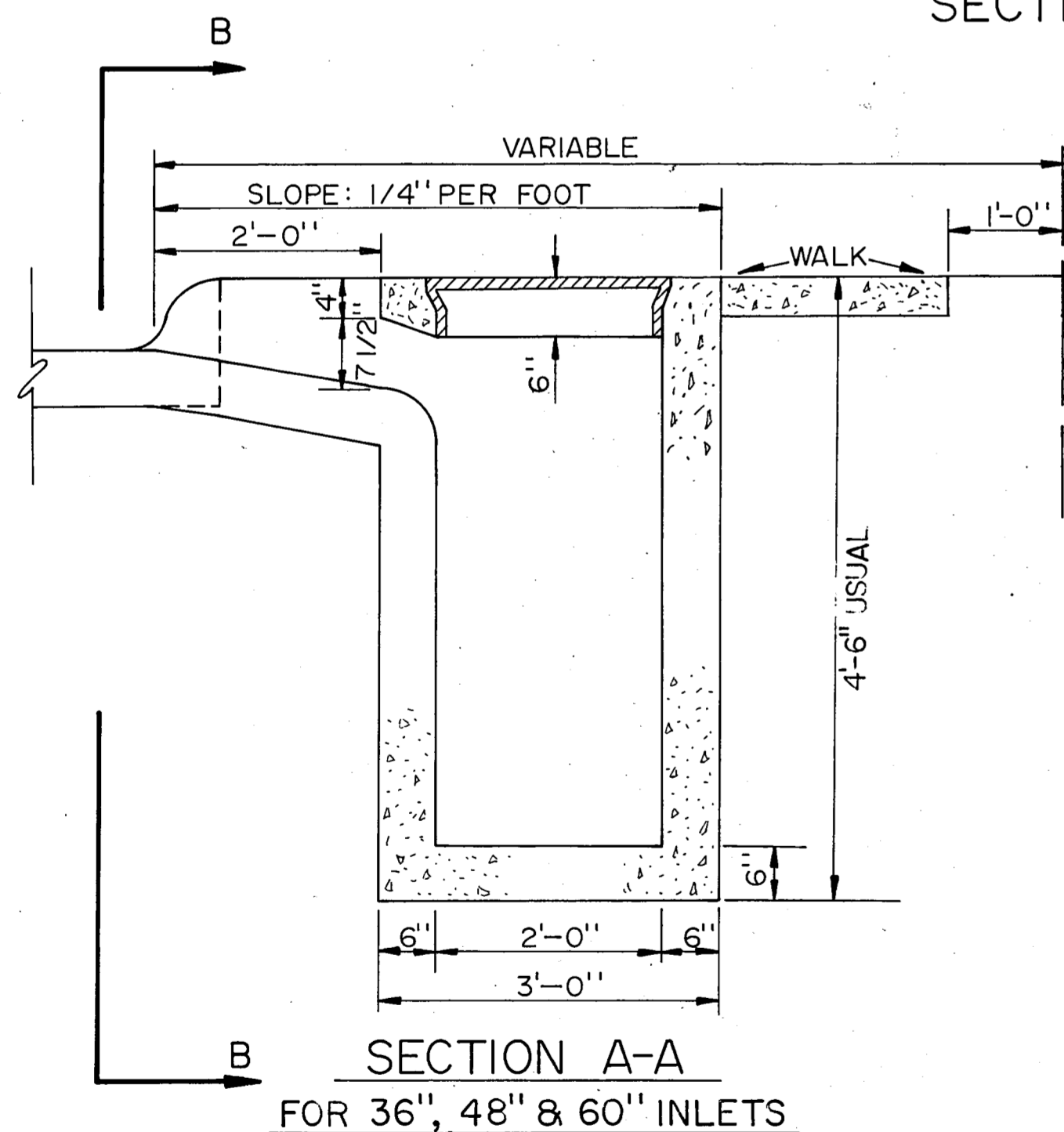


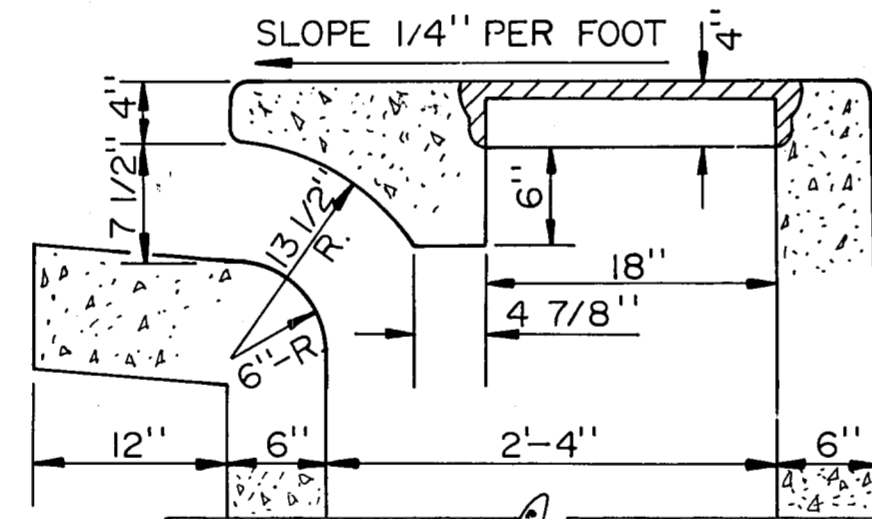
STANDARD RECESSED STORM DRAINAGE INLETS & CURBS



SECTION B-B



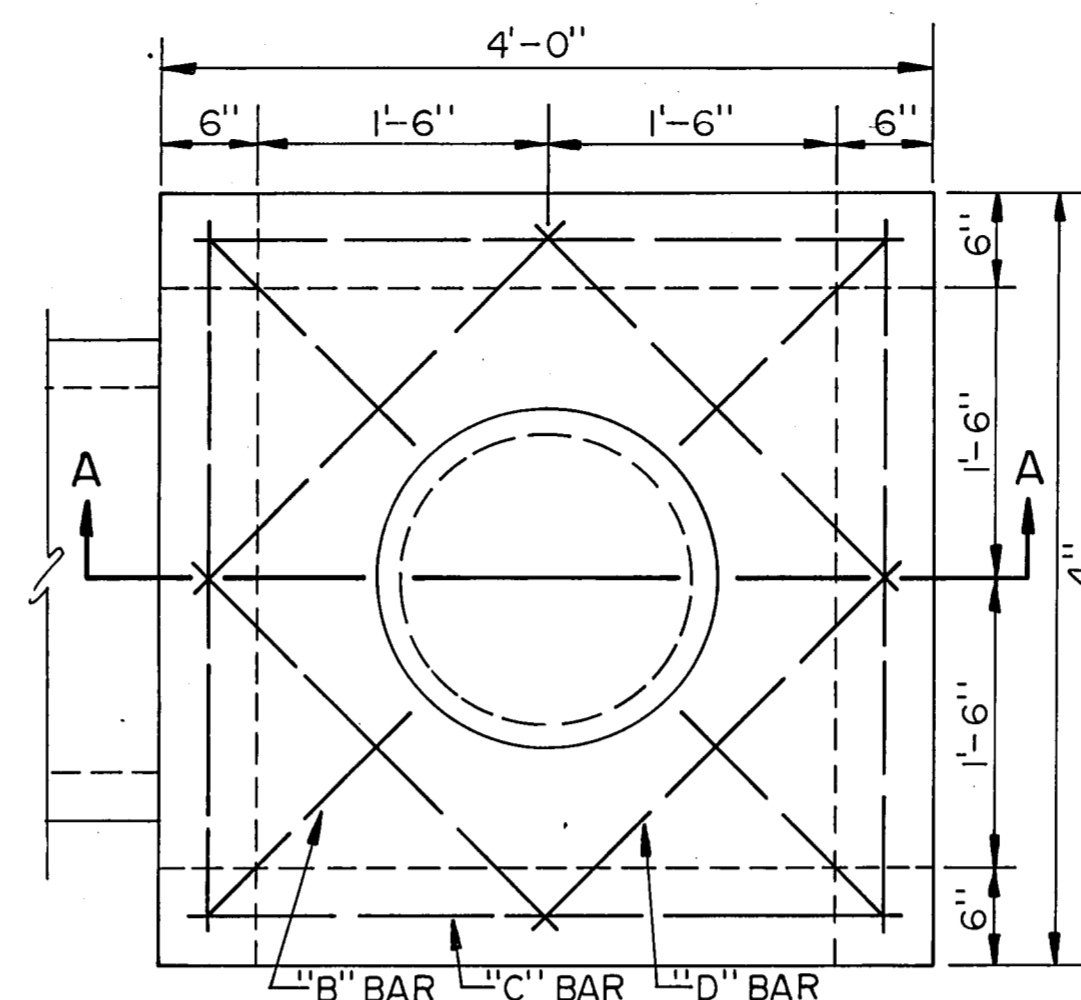
SECTION A-A
FOR 36", 48" & 60" INLETS



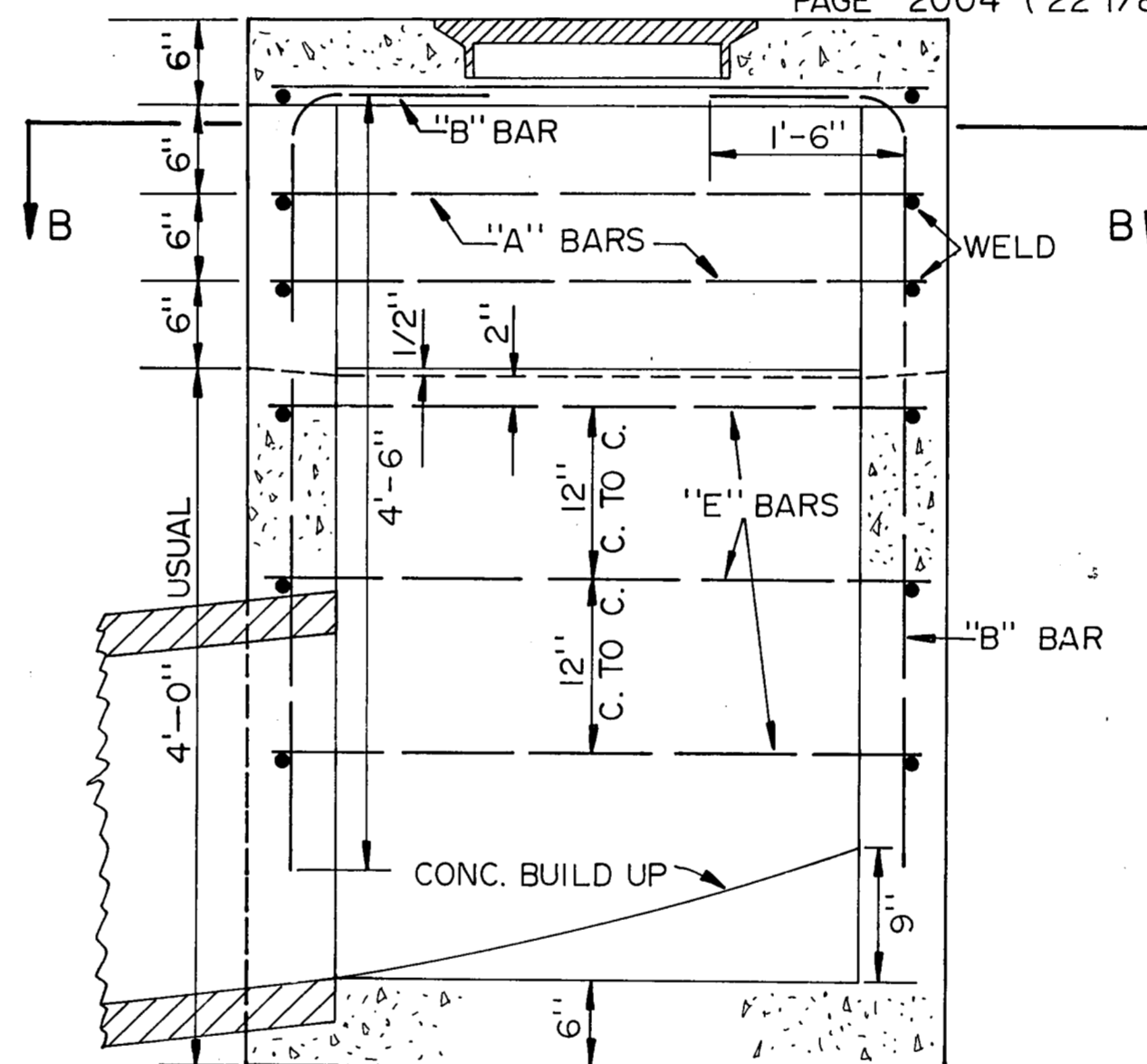
SECTION A-A
FOR 6", 8" & 10" INLETS

NOTE:
SEE PAGE 2004 FOR REINFORCING & BEAM DESIGN

SPECIAL "Y" INLET

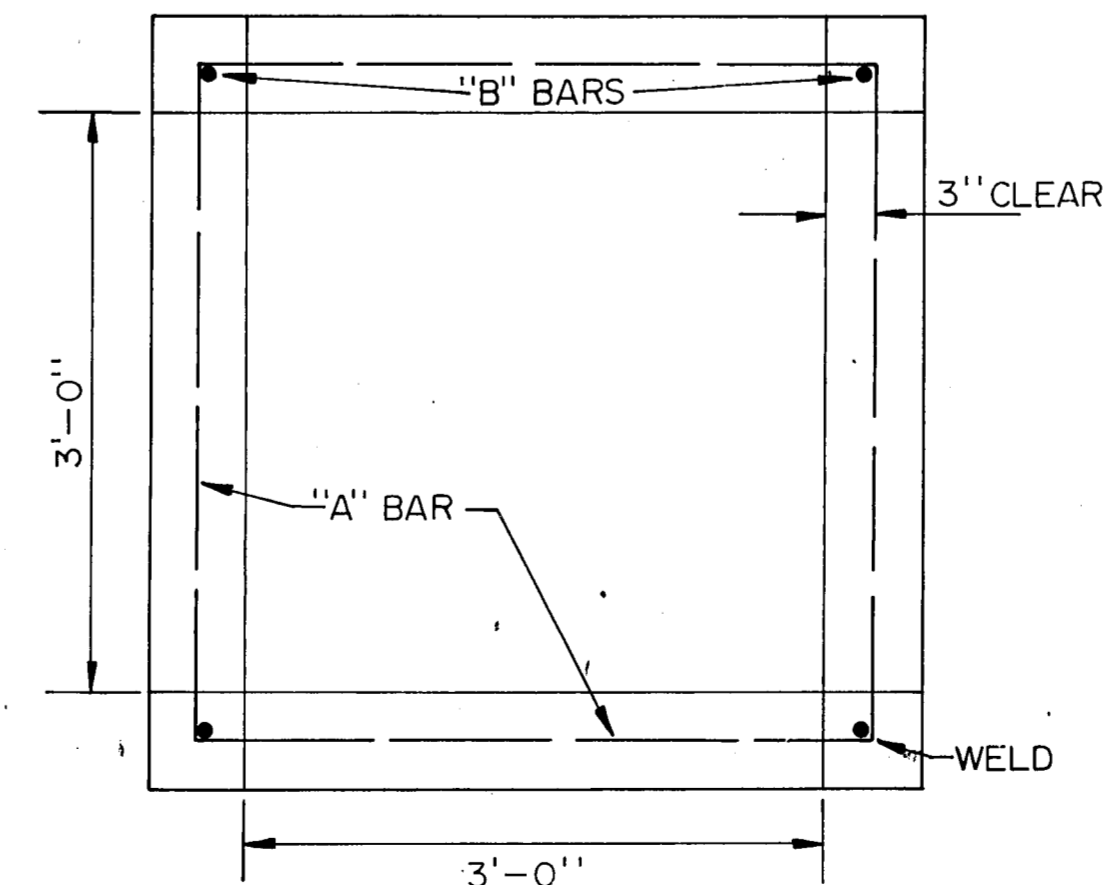


NOTES ALL CONCRETE TO BE 3000 P.S.I.
DEPTH OF INLETS MAY VARY TO SUIT CONDITIONS IN THE FIELD
OR AS SPECIFIED ON PLANS.
USE CITY OF DALLAS STANDARD INLET FRAME & COVER
PAGE 2004 (22 1/8" FRAME)



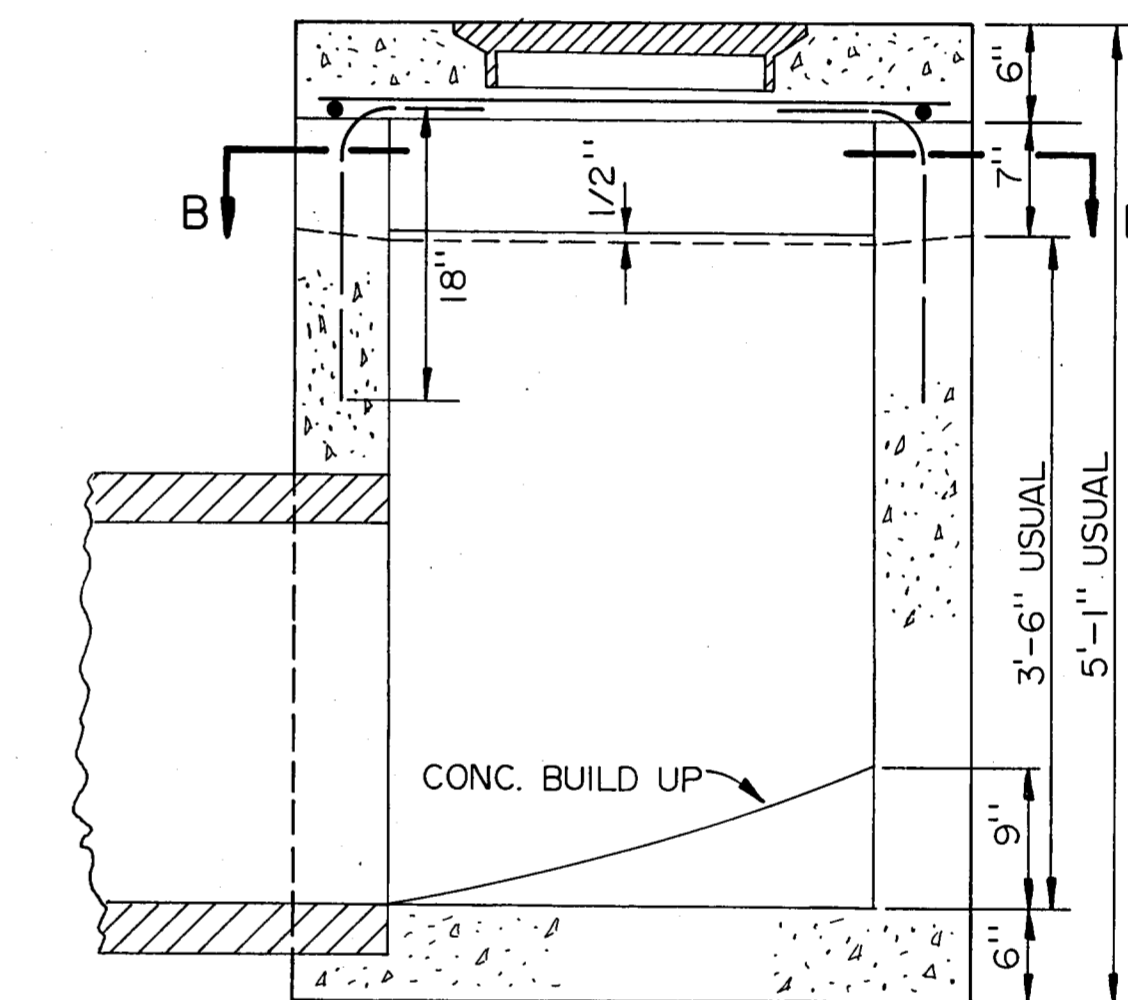
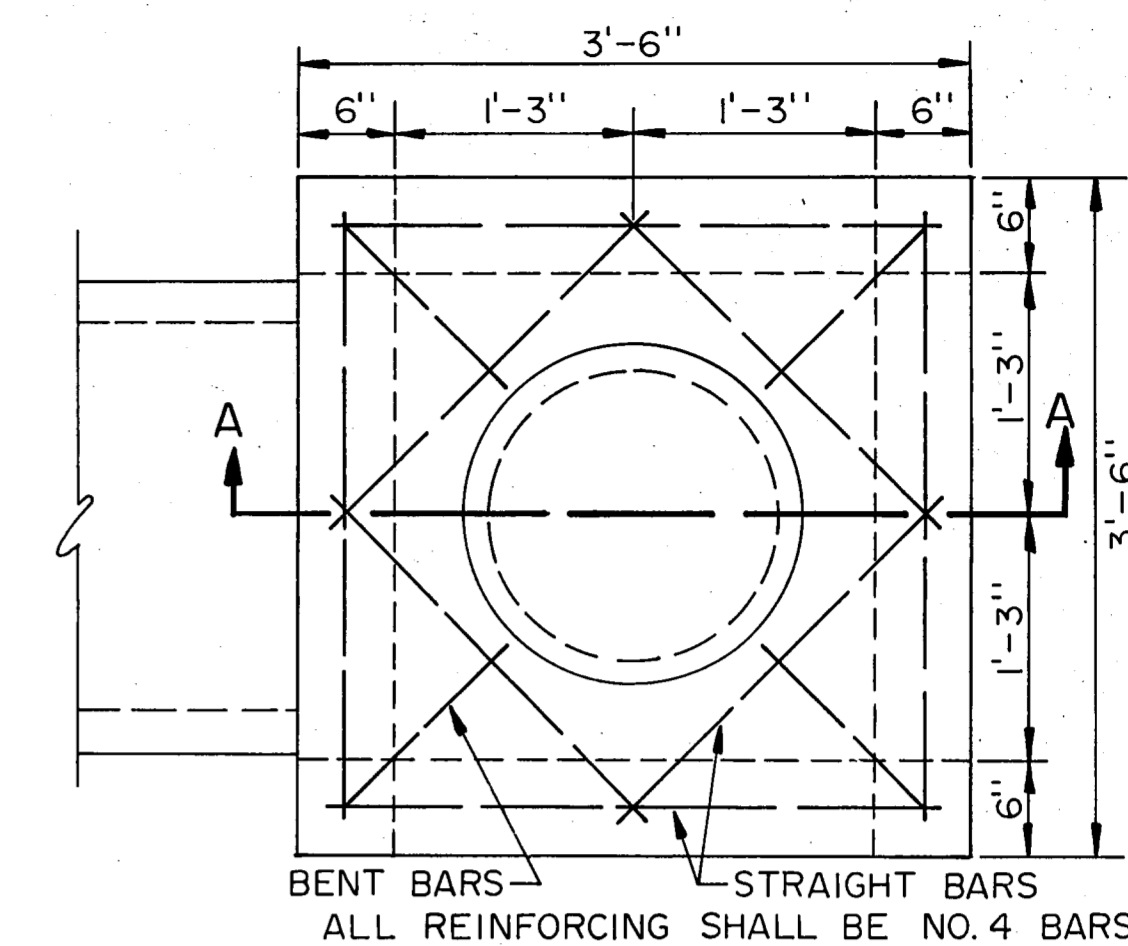
SECTION A-A

"A" BARS SHALL BE NO. 8 BARS PLACED AS SHOWN
& WELDED AT EACH CORNER OF THE INLET.
ALL OTHER BARS SHALL BE NO. 5 BARS PLACED
AS SHOWN.

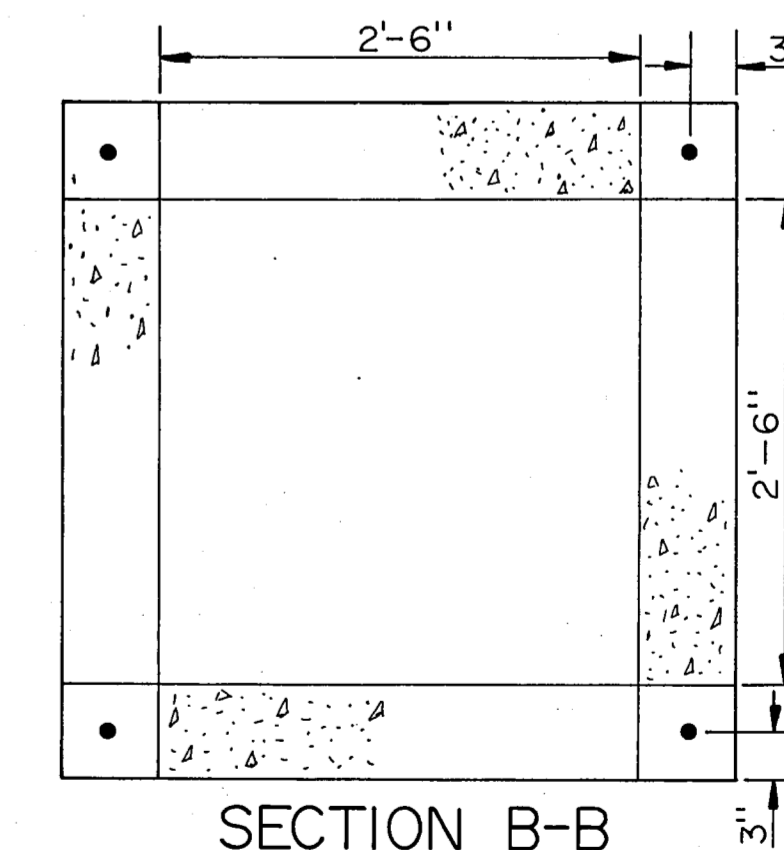


SECTION B-B

STANDARD TYPE "Y" INLET



SECTION A-A



SECTION B-B

APPROVED _____
DIRECTOR OF PUBLIC WORKS

DATE

DRAINAGE DETAILS
STANDARD INLETS & CURBS
"Y" TYPE INLETS
DEPARTMENT OF PUBLIC WORKS
CITY OF DALLAS, TEXAS

DESIGN	DRAWN	DATE	FILE	NO.	PAGE NO.
CITY OF DALLAS	MAY 1980	251D	1	2001	

44B
44