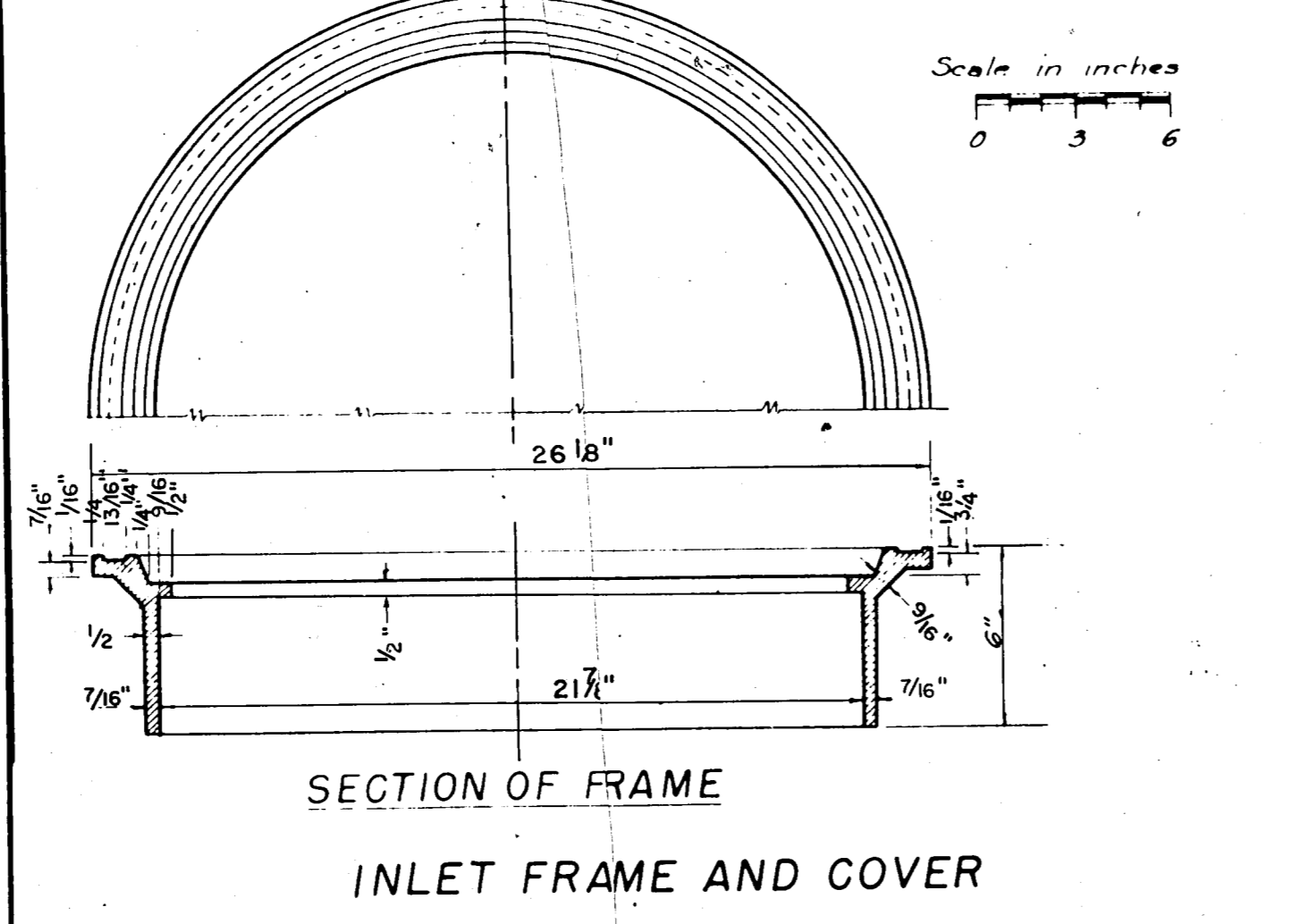
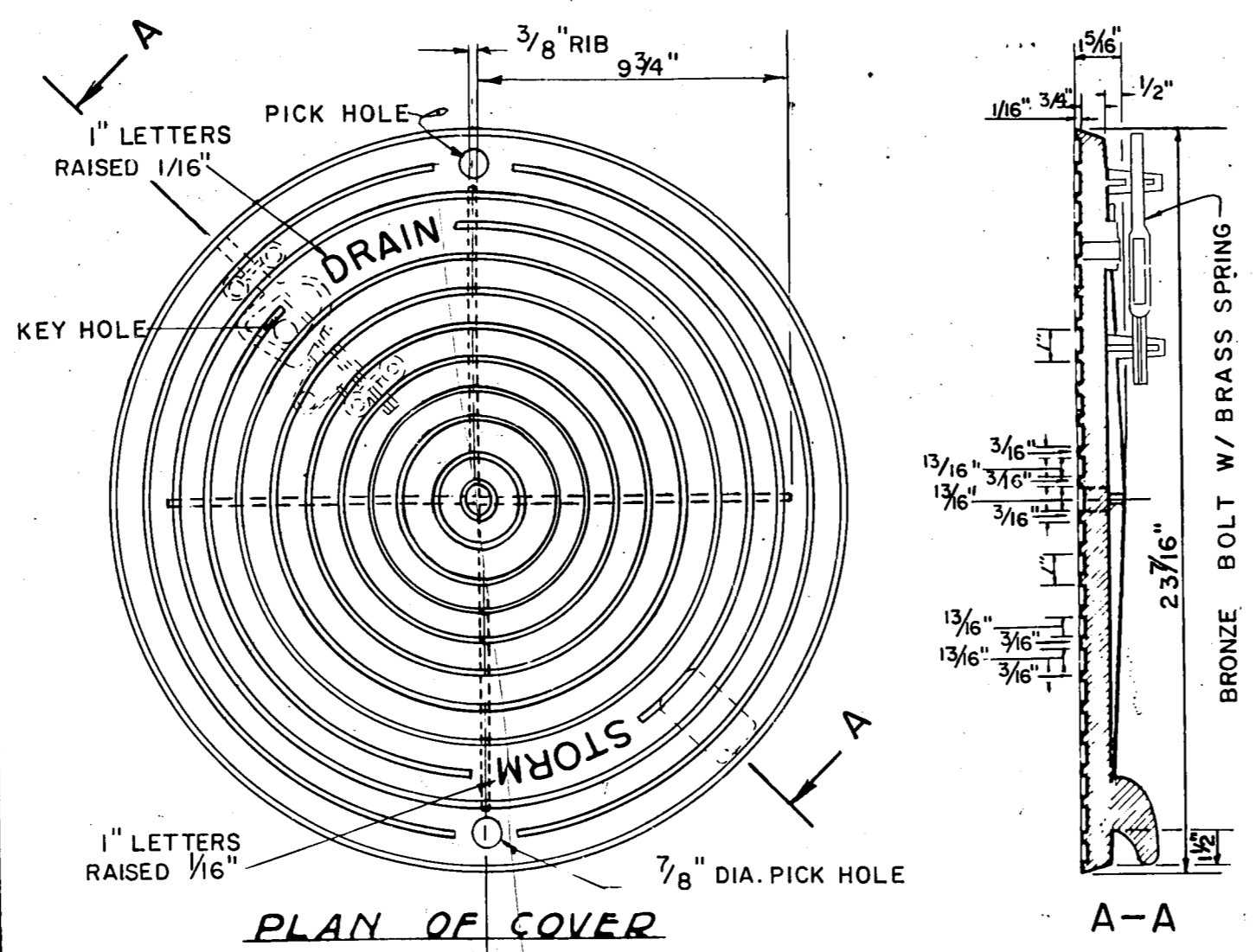
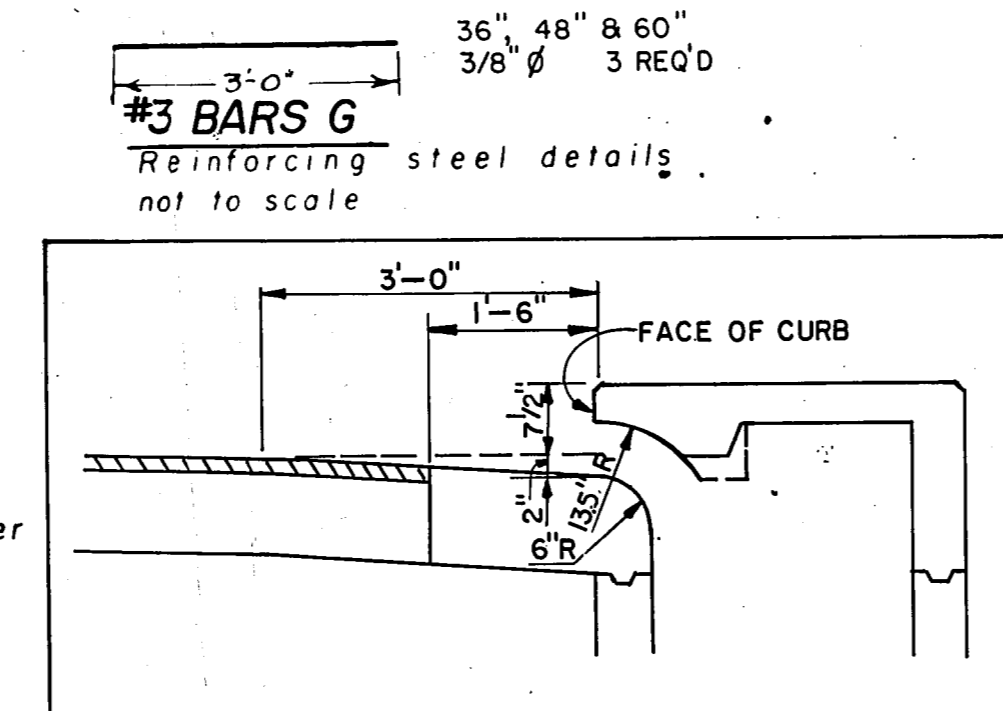


36, 48 AND 60 INCH INLETS



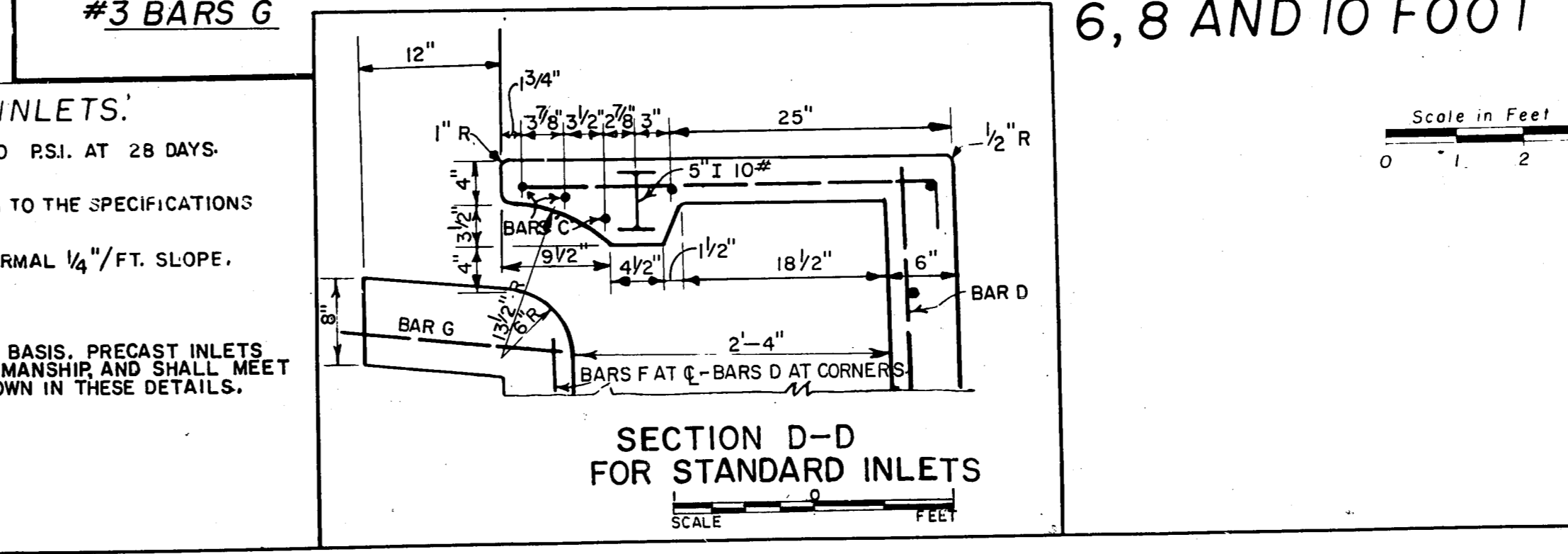
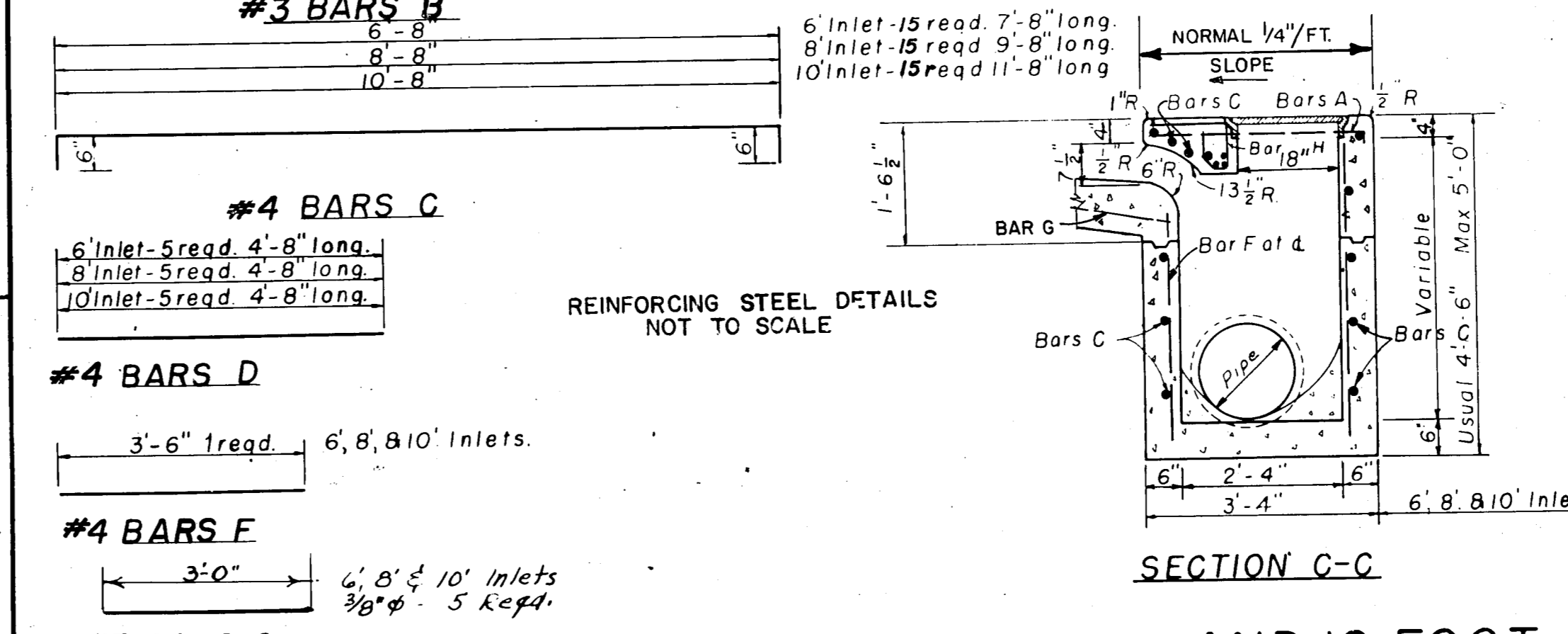
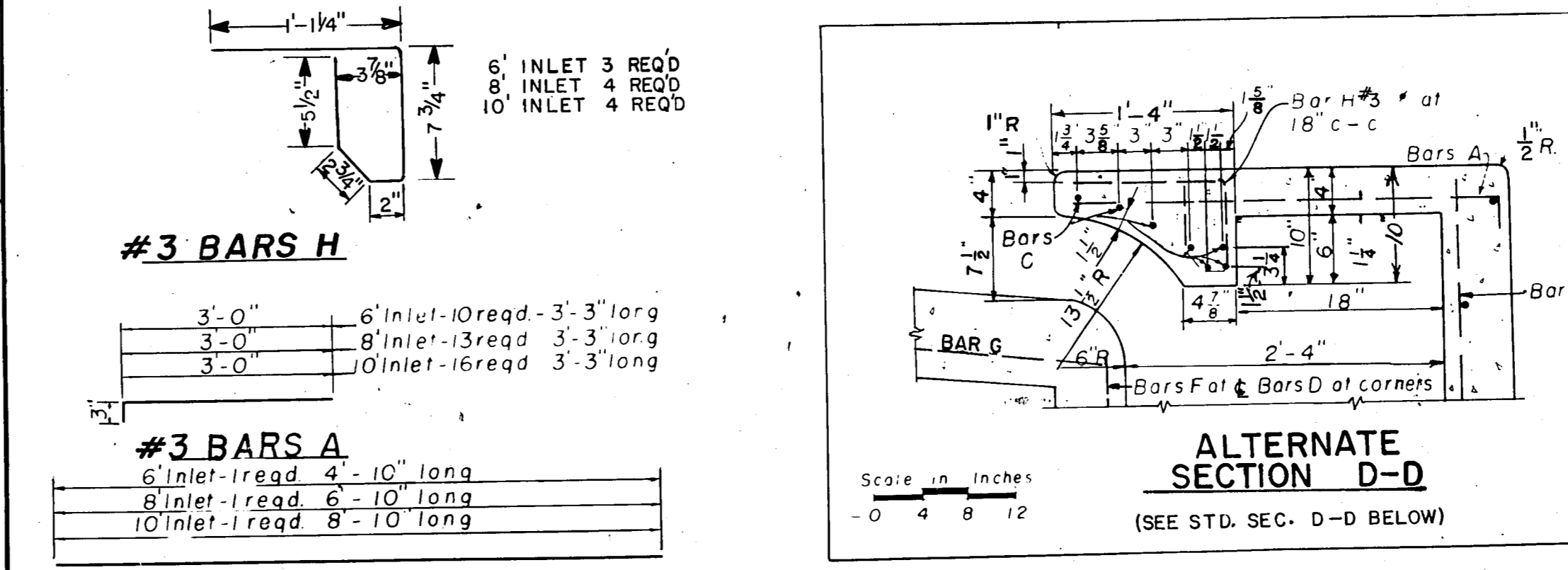
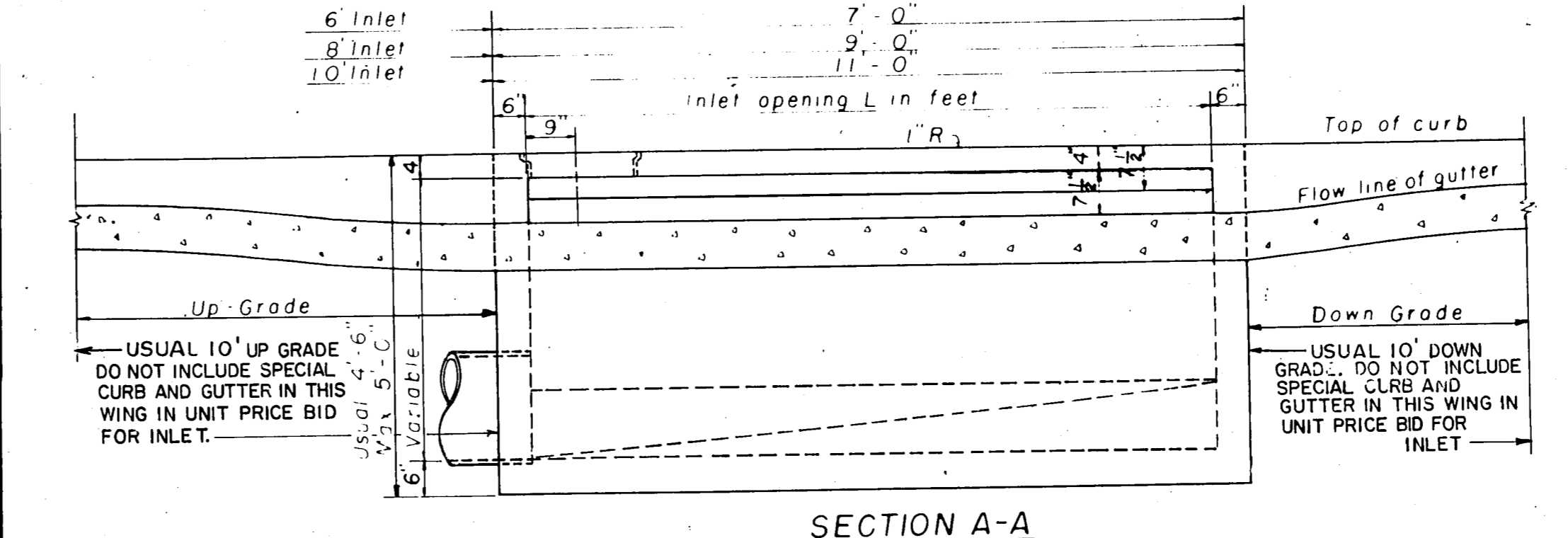
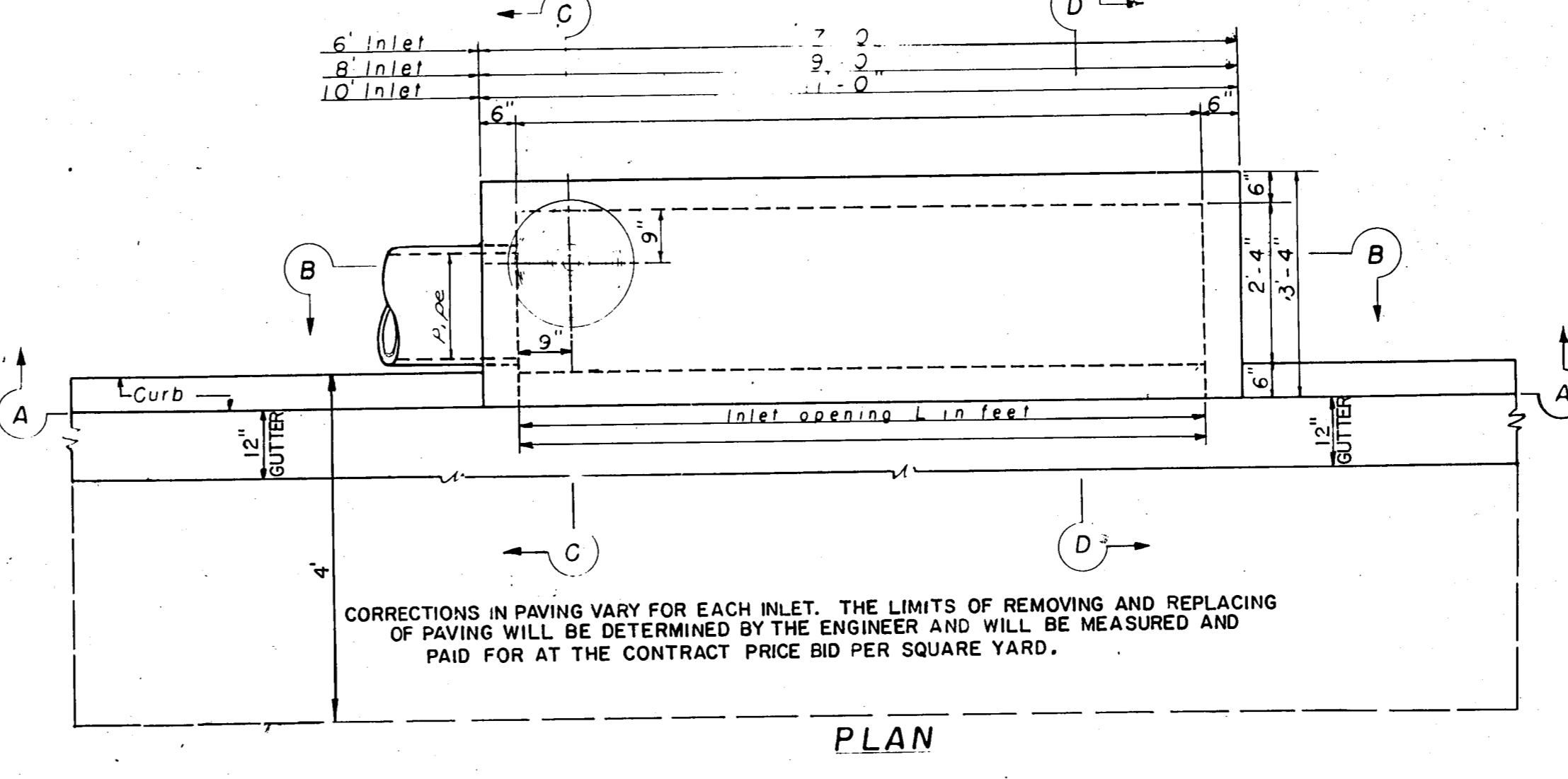
NOTE:  
ON 48" & 60" INLETS, THE INLET FRAME AND COVER SHALL BE AT SAME END OF INLET AS PIPE.

- #5 BARS A: 36" Inlet - 4 reqd, 48" Inlet - 4 reqd, 60" Inlet - 4 reqd
- #5 BARS B: 36" Inlet - 4 reqd, 48" Inlet - 6 reqd, 60" Inlet - 8 reqd
- #5 BARS C: 36" Inlet - 2 reqd 4'-9" long, 48" Inlet - 2 reqd 5'-9" long, 60" Inlet - 2 reqd 6'-9" long
- #3 BARS G: Reinforcing steel details not to scale

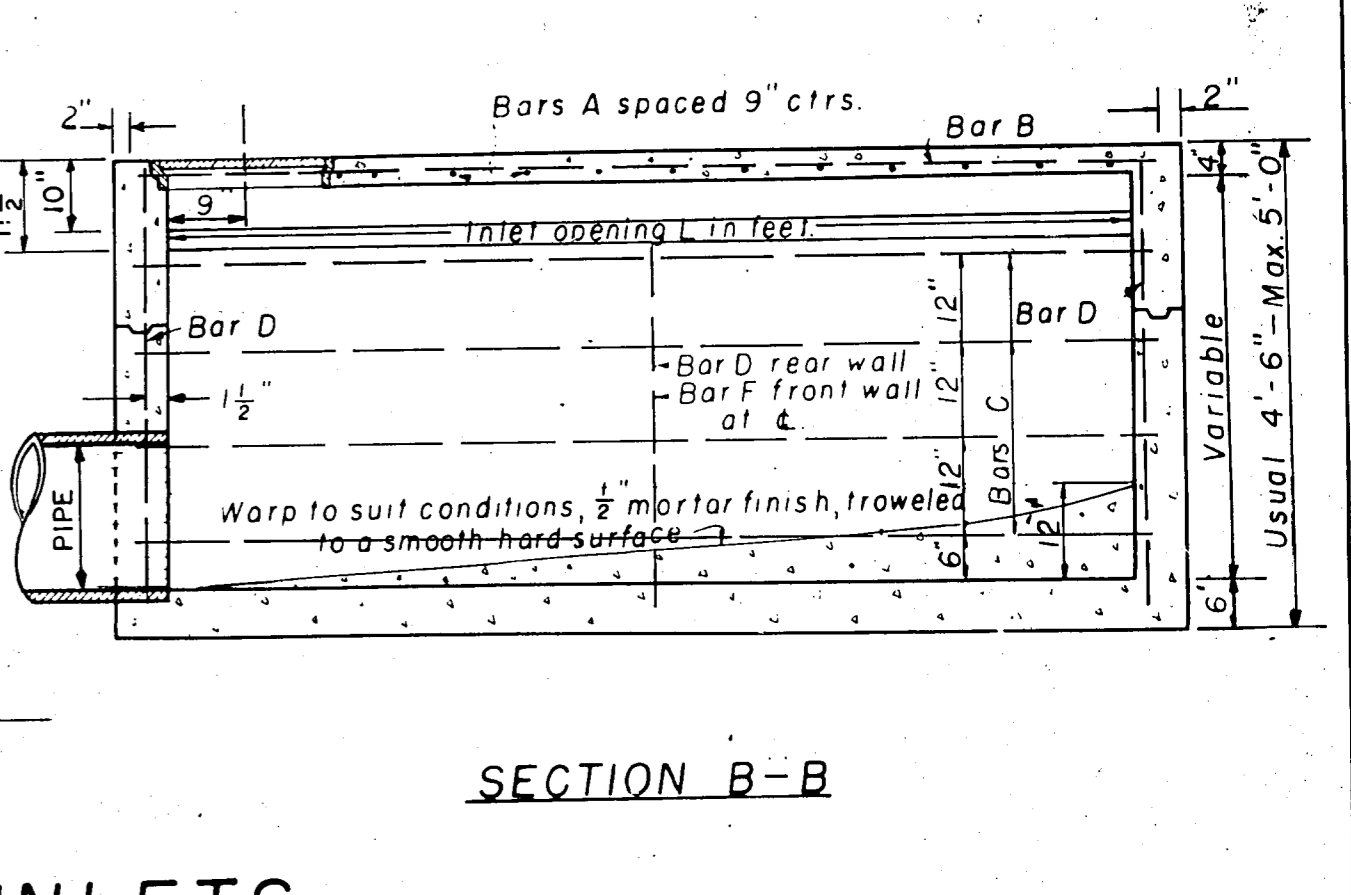
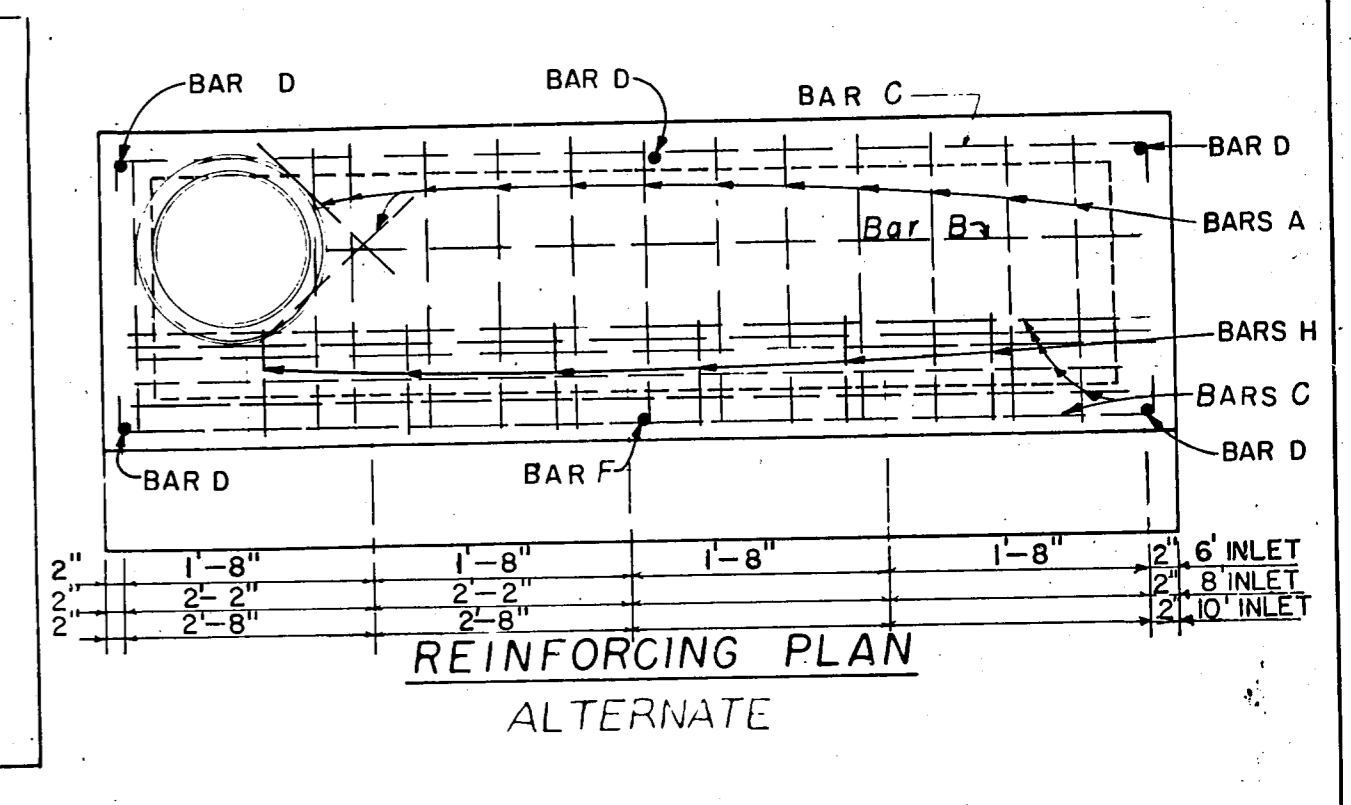
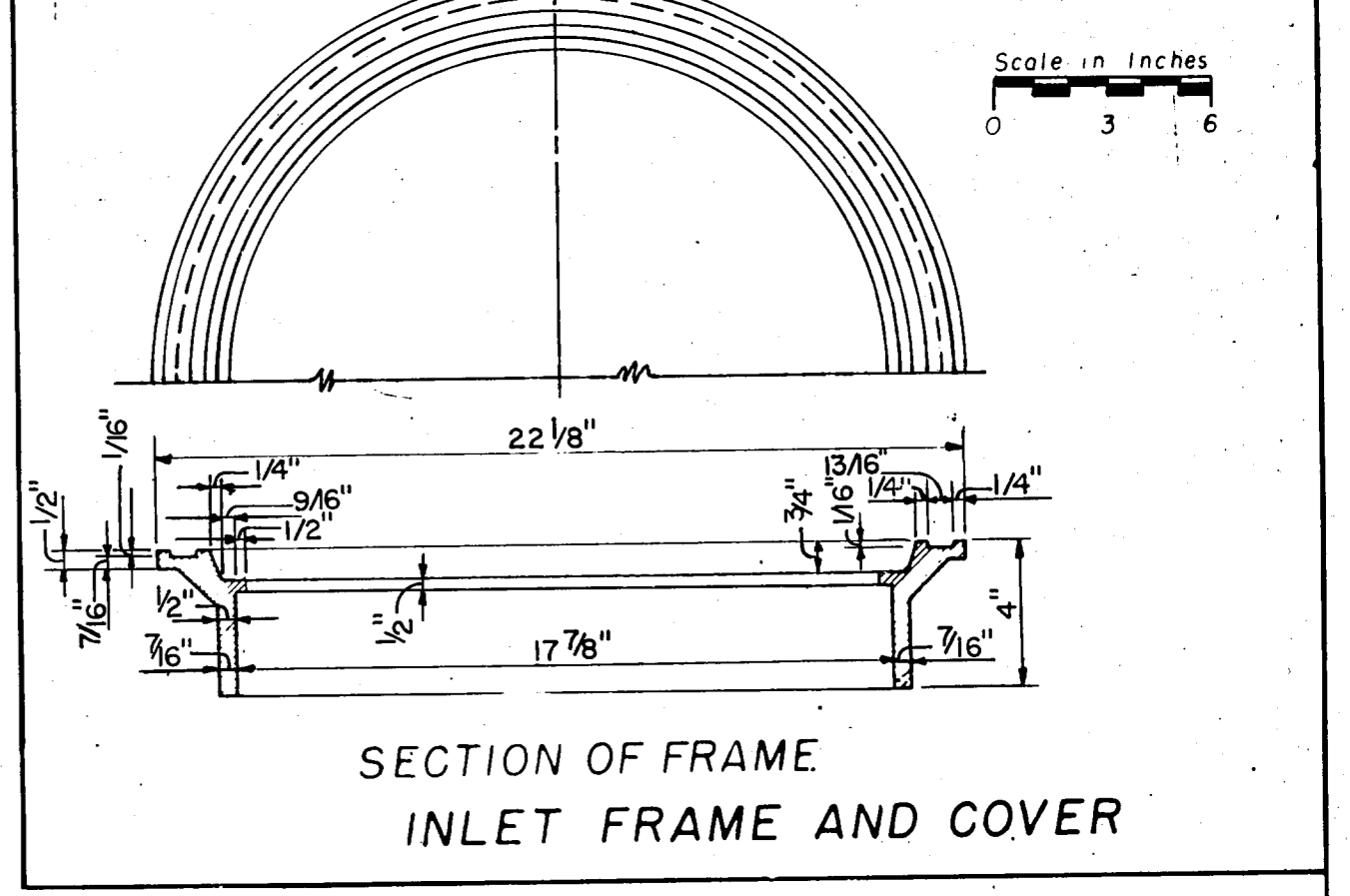
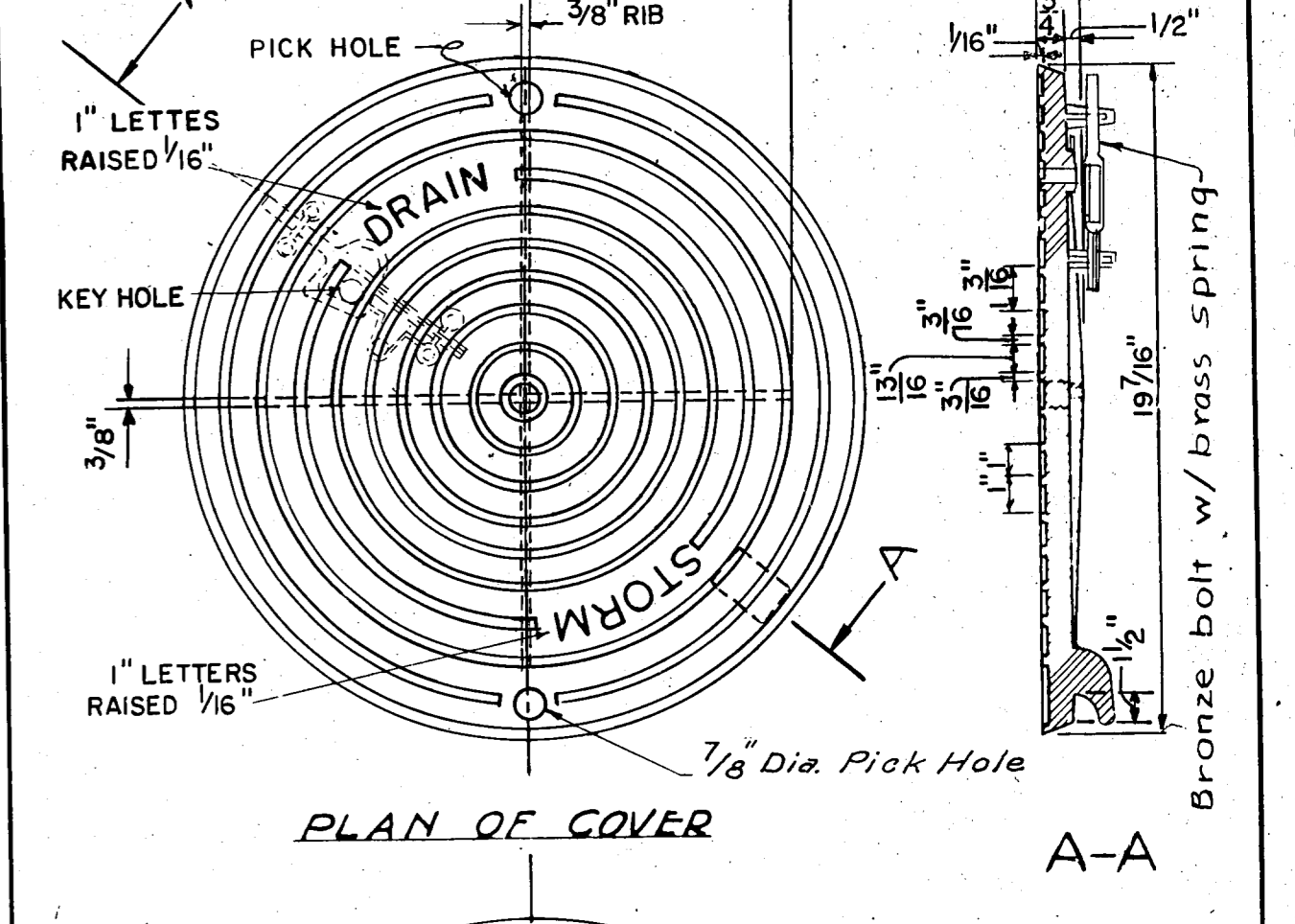


DETAIL FOR SHALLOW DEPRESSION INLETS

NOTES APPLICABLE TO ALL INLETS:  
CONCRETE SHALL HAVE A MINIMUM COMPRESSIVE STRENGTH OF 3000 PSI. AT 28 DAYS. LATERAL PIPE MAY ENTER INLET AT ANY LOCATION.  
REINFORCEMENT, STRUCTURAL STEEL AND CASTINGS SHALL CONFORM TO THE SPECIFICATIONS  
TOP OF INLET SLOPE SHALL CONFORM TO ADJACENT PARKWAY NORMAL 1/4"/FT. SLOPE.  
ALTERNATE CONSTRUCTION:  
ALTERNATE PRECAST INLETS MAY BE APPROVED ON AN INDIVIDUAL BASIS. PRECAST INLETS SHALL BE OF EQUAL OR BETTER STRENGTH MATERIAL, AND WORKMANSHIP AND SHALL MEET THE STANDARD DESIGN CRITERIA OF THE CAST-IN-PLACE INLETS SHOWN IN THESE DETAILS.



6, 8 AND 10 FOOT INLETS



APPROVED \_\_\_\_\_  
DATE \_\_\_\_\_  
DIRECTOR OF PUBLIC WORKS

**DRAINAGE DETAILS**  
36, 48 AND 60 INCH INLETS  
6, 8 AND 10 FOOT INLETS  
DEPT. OF PUBLIC WORKS  
CITY OF DALLAS, TEXAS

DESIGN	DRAWN	DATE	FILE	NO.	PAGE NO.
CITY OF DALLAS	MARCH 1980	251D	1	2004	

44C  
44