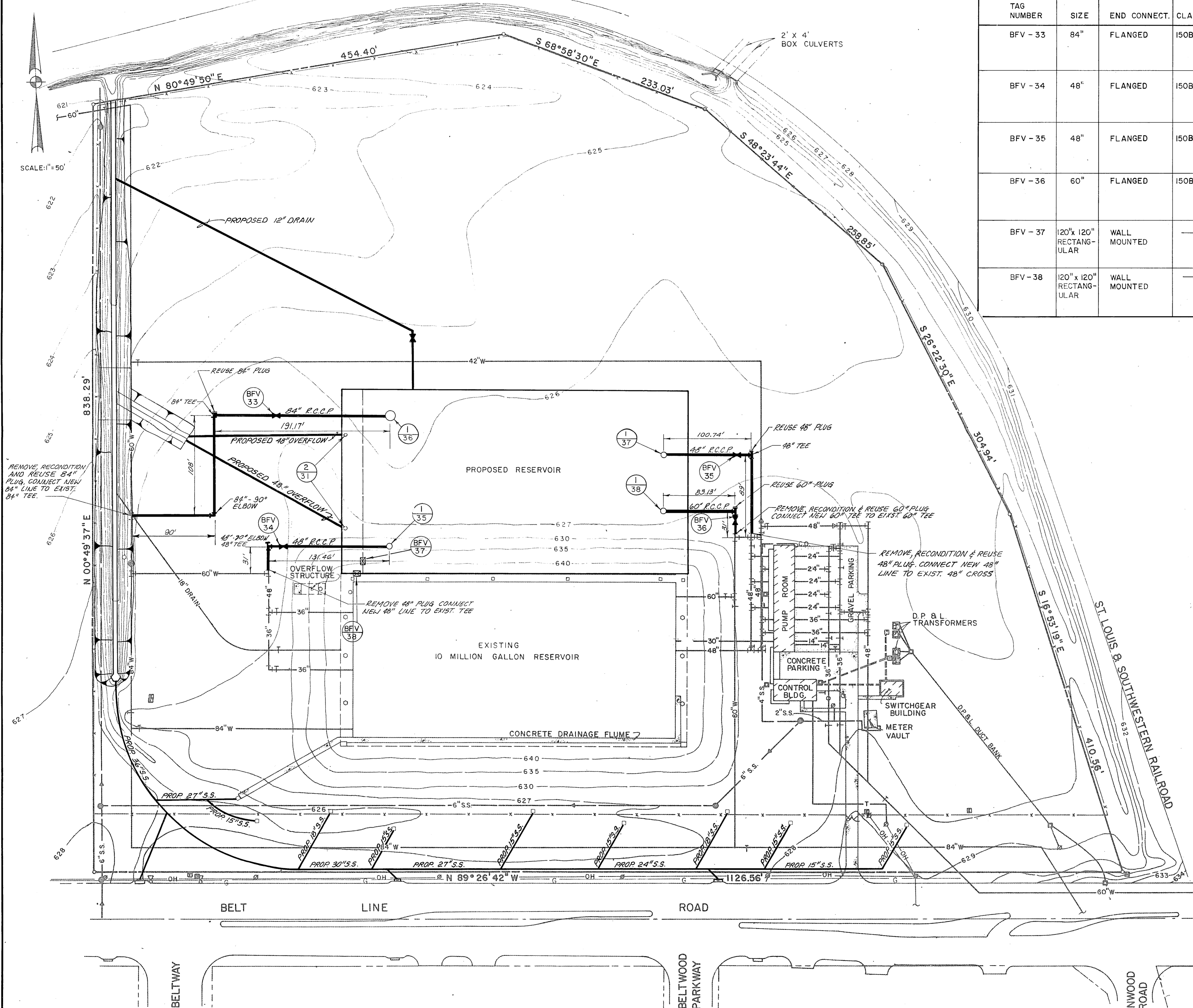


BUTTERFLY VALVE SCHEDULE

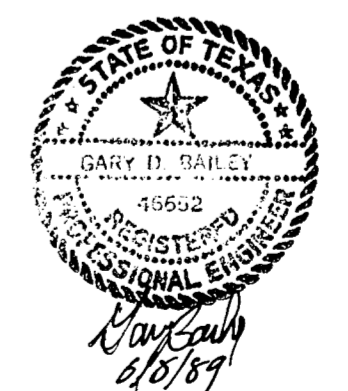
TAG NUMBER	SIZE	END CONNECT.	CLASS	TYPE OPERATOR	OPERATING CONDITIONS	MAXIMUM FLOW	SERVICE PRESURE	TIME OF CLOSURE
BFV - 33	84"	FLANGED	I50B	ELECTRIC MOTOR	N.O. OPEN/CLOSE INLET	131,000 G.P.M.	60 PSI	360 SEC.
BFV - 34	48"	FLANGED	I50B	ELECTRIC MOTOR	N.O. OPEN/CLOSE INLET	43,000 GPM	60 PSI	360 SEC.
BFV - 35	48"	FLANGED	I50B	MANUAL BURIED GEAR 2" STD. AWWA NUT W/EXTENSION	N.O. OPEN/CLOSE OUTLET	---	---	---
BFV - 36	60"	FLANGED	I50B	MANUAL BURIED GEAR 2" STD. AWWA NUT W/EXTENSION	N.O. OPEN/CLOSE OUTLET	---	---	---
BFV - 37	120" x 120" RECTANGULAR	WALL MOUNTED	---	MANUAL GEAR OPERATOR W/HANDWHEEL & EXT. SHAFT	N.O. OPEN/CLOSE ISOLATION	---	---	---
BFV - 38	120" x 120" RECTANGULAR	WALL MOUNTED	---	MANUAL GEAR OPERATOR W/HANDWHEEL & EXT. SHAFT	N.O. OPEN/CLOSE ISOLATION	---	---	---



LEGEND

- ⊗ TRAFFIC SIGNAL
- ⊕ POWER POLE
- ⊗ CHAIN LINK FENCE
- ⊕ WATER VALVE
- ⊙ SANITARY SEWER MANHOLE
- ⊙ SANITARY SEWER CLEANOUT
- ⊙ ELECTRICAL MANHOLE
- ⊙ ELECTRICAL RISER
- ⊙ WATER MANHOLE
- ⊙ WATER METER
- ⊙ PIPE VENT
- ⊙ GAS VALVE
- ⊙ TRAFFIC CONTROL BOX
- ⊙ ELECTRICAL PANEL
- ⊙ AIR RELEASE VALVE MANHOLE
- ⊙ OVERFLOW SYSTEM MANHOLE
- ⊙ THRUST BLOCK

NOTES:  
 1. CONTRACTOR SHALL VERIFY (HORIZONTAL AND VERTICAL) LOCATIONS OF ALL TIE-IN POINTS PRIOR TO SUBMITTING PIPE LAYING PLANS.  
 2. RECONDITION ALL PLUGS BEFORE USE.



NO.	DATE	REVISION	APPROVED
BELTWOOD RESERVOIR EXPANSION			
YARD PIPING LAYOUT			
DALLAS WATER UTILITIES CITY OF DALLAS, TEXAS			
TurnerCollie & Braden Inc.			
DESIGN	B.C.R.	CONTRACT NO.	89-79
DRAWN	C.A.	FILE NO.	630 Q 700 F
TRACED			
CHECKED			
DATE	5/89		

SHEET NO. 8 OF 44