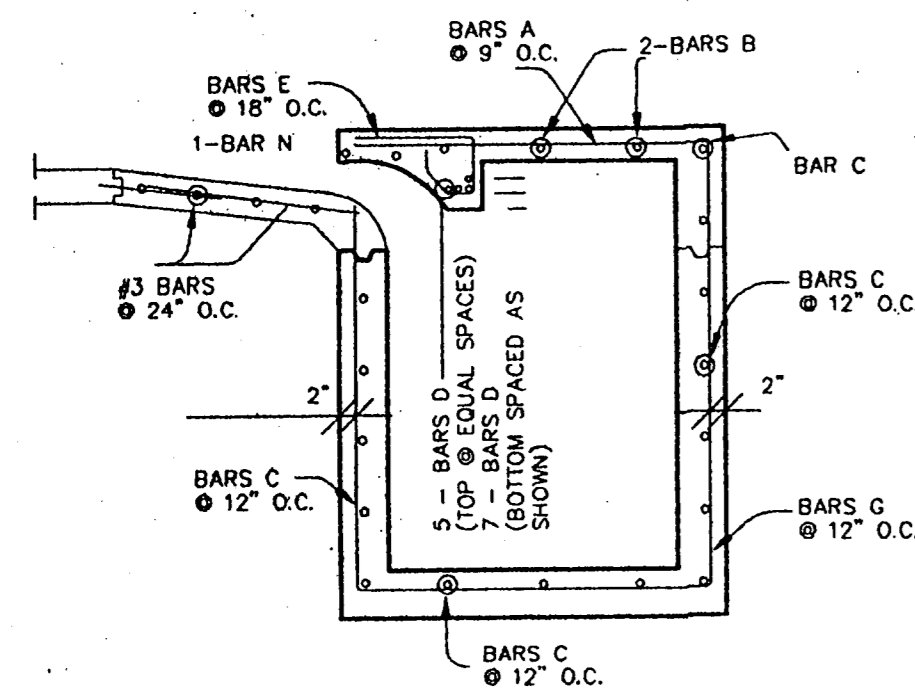
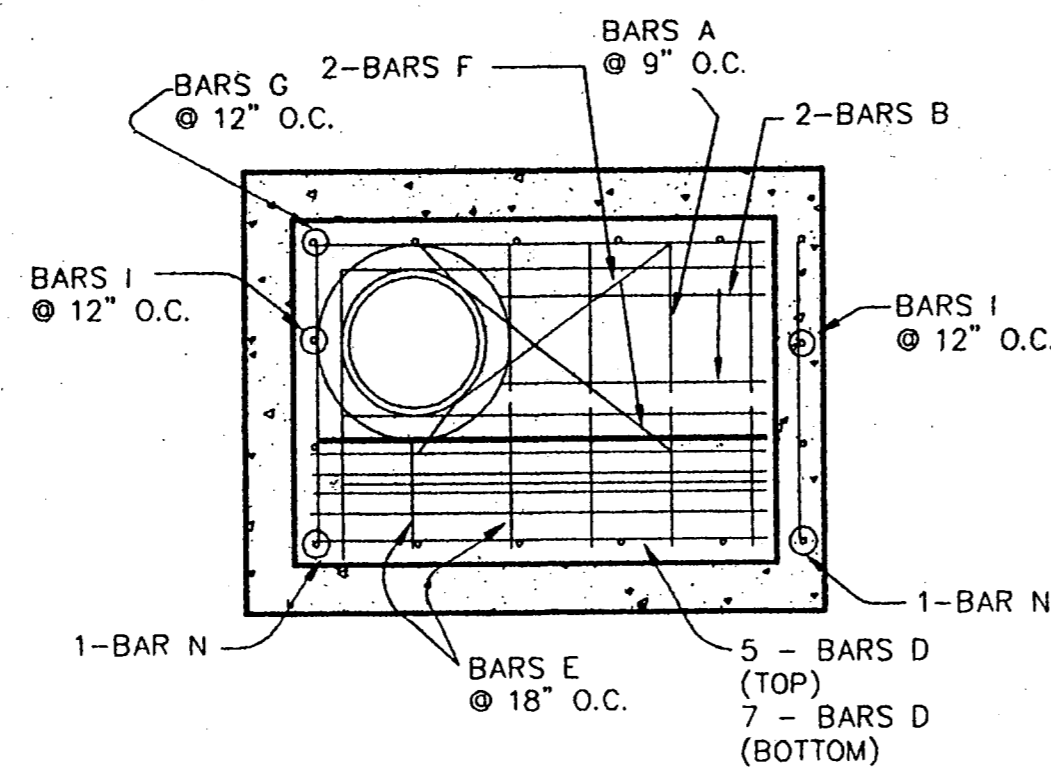


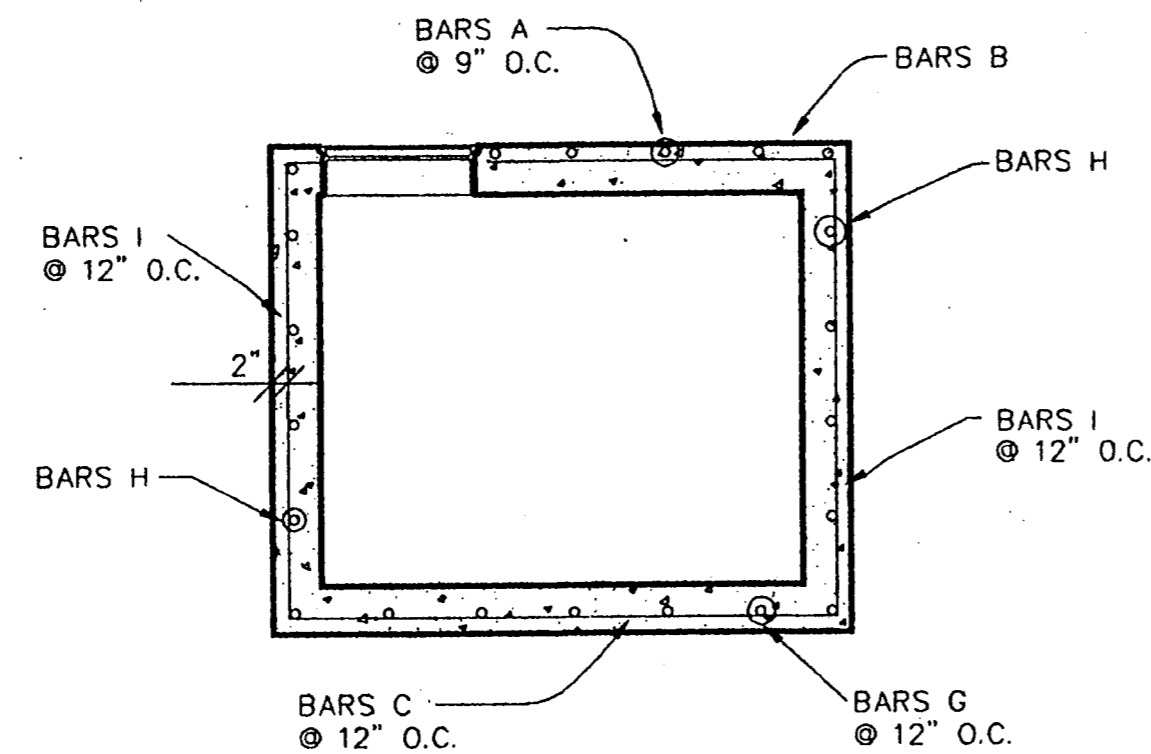
TYPICAL CROSS SECTION



SECTION E-E



PLAN VIEW

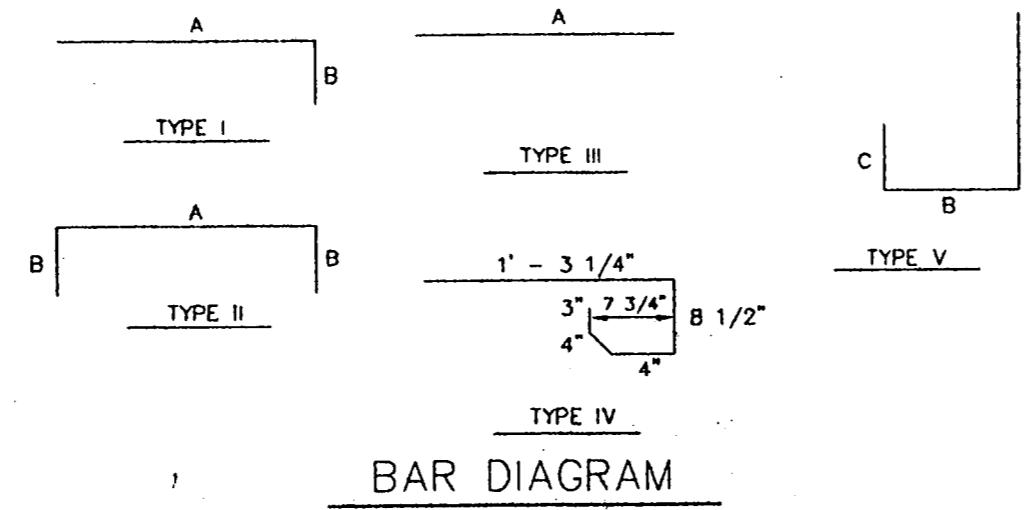


SECTION B-B

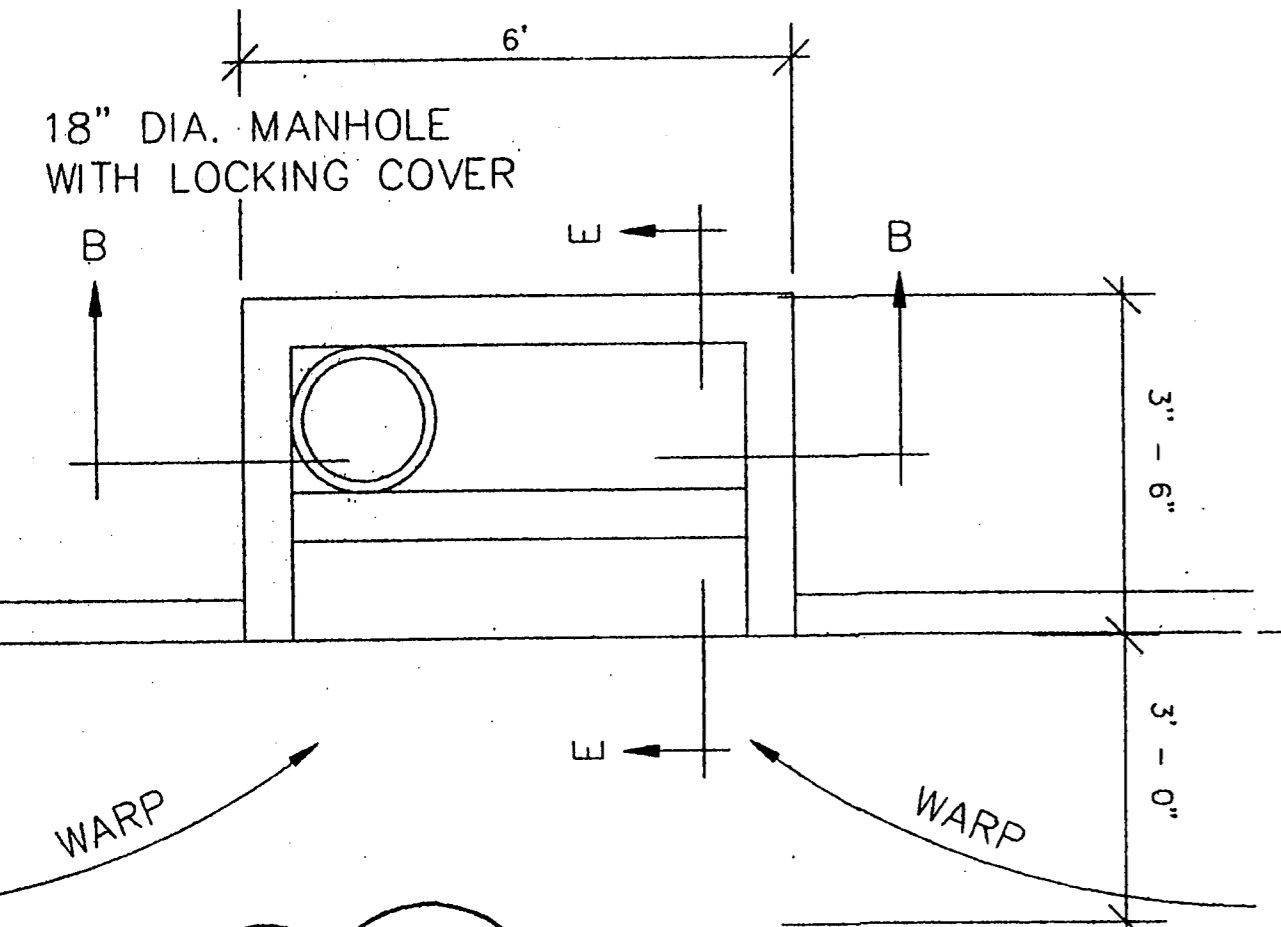
REINFORCING BAR SCHEDULE					
INLET LENGTH	BAR MARK #	BAR DIAGRAM TYPE	BAR SIZE	NUMBER REQUIRED	BAR BENDING DIMENSIONS
5'	A	I	#3	5	3' - 2"
	B	I	#3	2	3' - 8"
	C	II	#4	VARIES	5' - 8"
	D	II	#4	12	5' - 8"
	E	IV	#3	6	"
	F	III	#3	2	4' - 0"
	G	V	#4	7	"
	H	III	#4	VARIES	3' - 2"
	I	III	#4	4	"
	N	III	#4	2	1' - 6"

SEE BAR DIAGRAM FOR DIMENSIONS. LENGTH VARIES DUE TO DEPTH OF INLET

CURB INLET REINFORCING

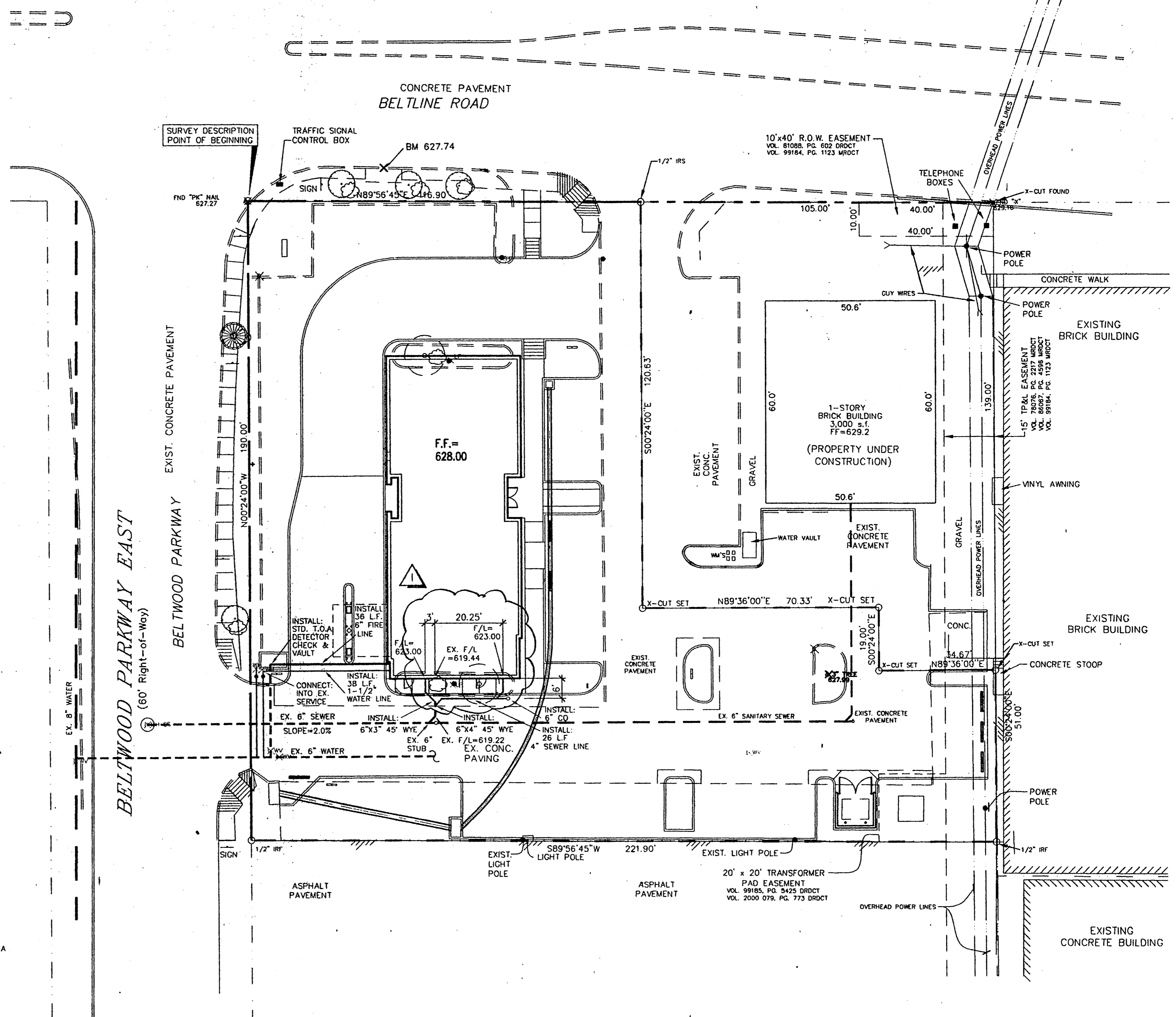


BAR DIAGRAM



5 FOOT CURB INLET

BELT LINE ROAD  
(100' Right-of-Way)



UTILITY PLAN  
SCALE: 1" = 20'-0"



MICHAEL PEEPLES  
ENGINEERS & PLANNERS  
2514 TARPLEY ROAD, #118 - CARROLLTON, TX 75006  
972-416-1968 (TEL) 972-416-5289 (FAX)

	<p><b>R-F</b> ROGERS - FORD ARCHITECTURE - INTERIOR DESIGN 2616 THOMAS AVENUE DALLAS, TEXAS 75204 TELEPHONE (214) 971-9388 FAX (214) 871-3155</p>	<p>LONE STAR BANK 4650 BELTLINE ROAD at Beltwood Parkway East ADDISON, TX. Project # 1804</p>	<p>07-25-00 ISSUE FOR PERMIT 08/17/2000 ISSUE FOR BID 08/25/2000 ADDENDUM #1</p>	<p>CE-2</p>
	<p><b>UTILITY PLAN</b></p>			

Copyright 2000 ROGERS-FORD ARCHITECTURE, P.C. PLOTTED BY: P:\AutoCad Drawing\Eliza Rogers-Ford\Arch\Line Star Bank\BELTLINE ROAD.dwg at Aug 27, 2000 4:00pm by MICHAEL PEEPLES