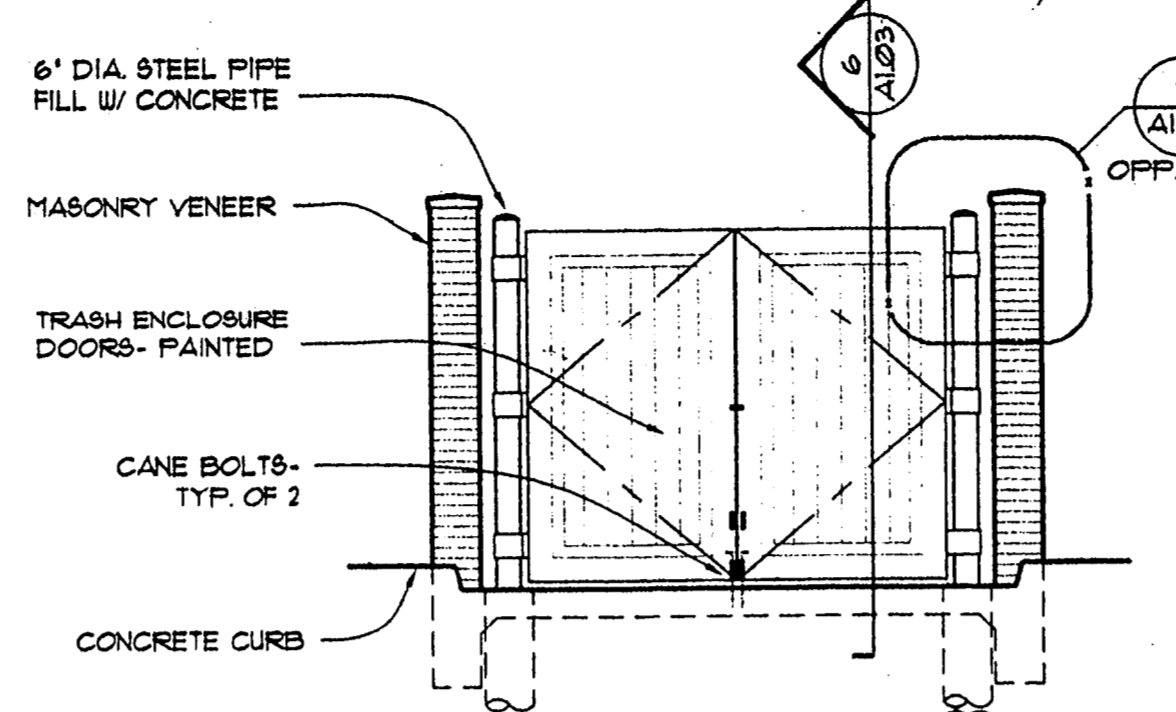
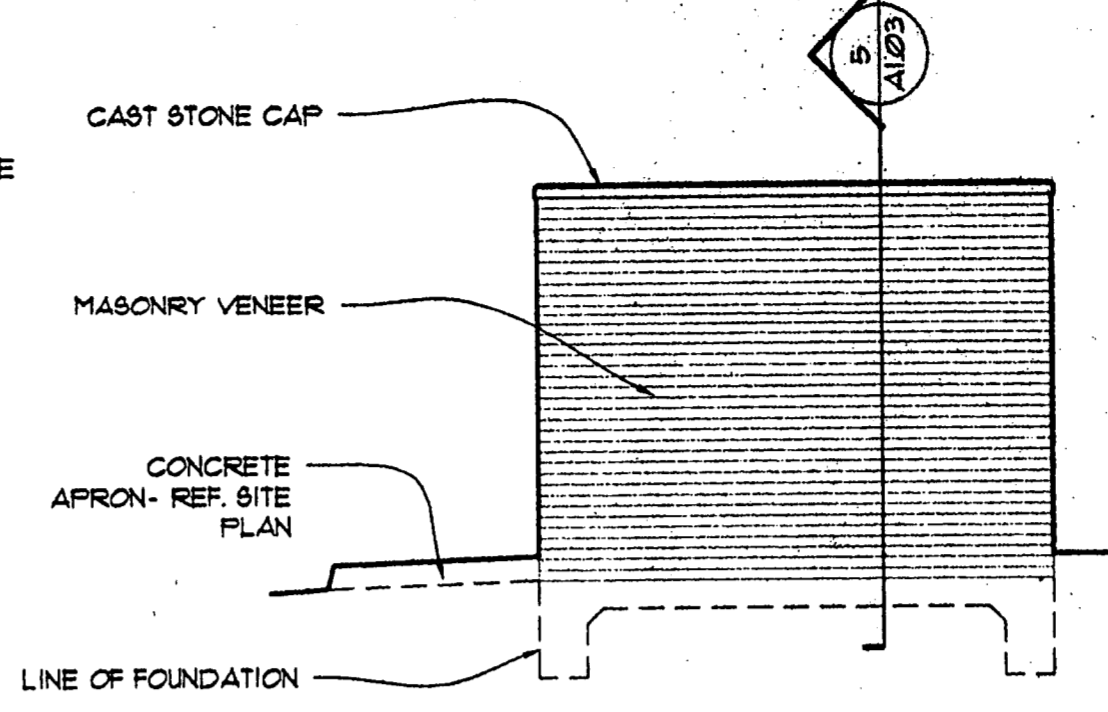


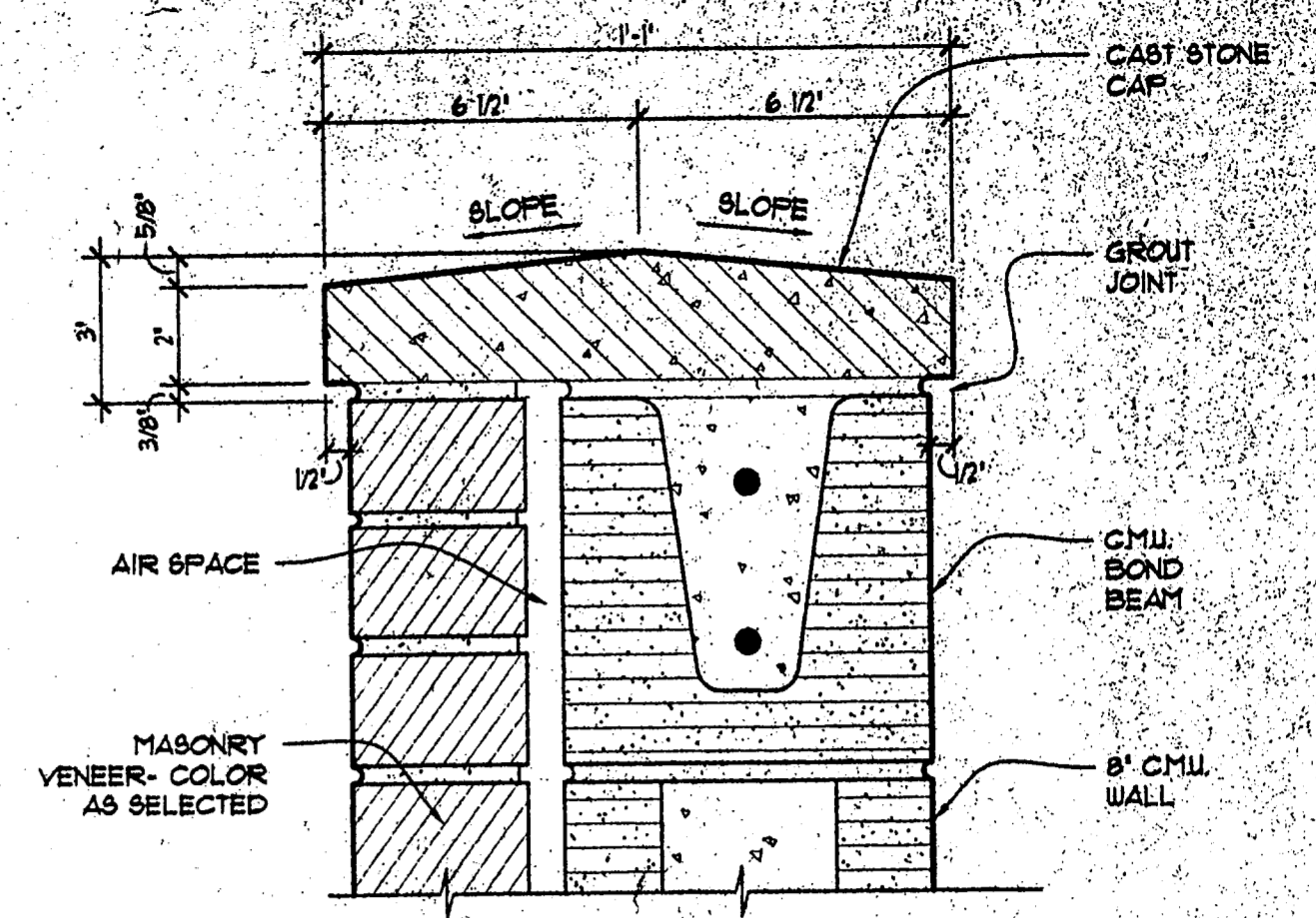
1 ENLARGED DUMPSTER ENCLOSURE PLAN
 A1.03 SCALE: 1/4" = 1'-0"



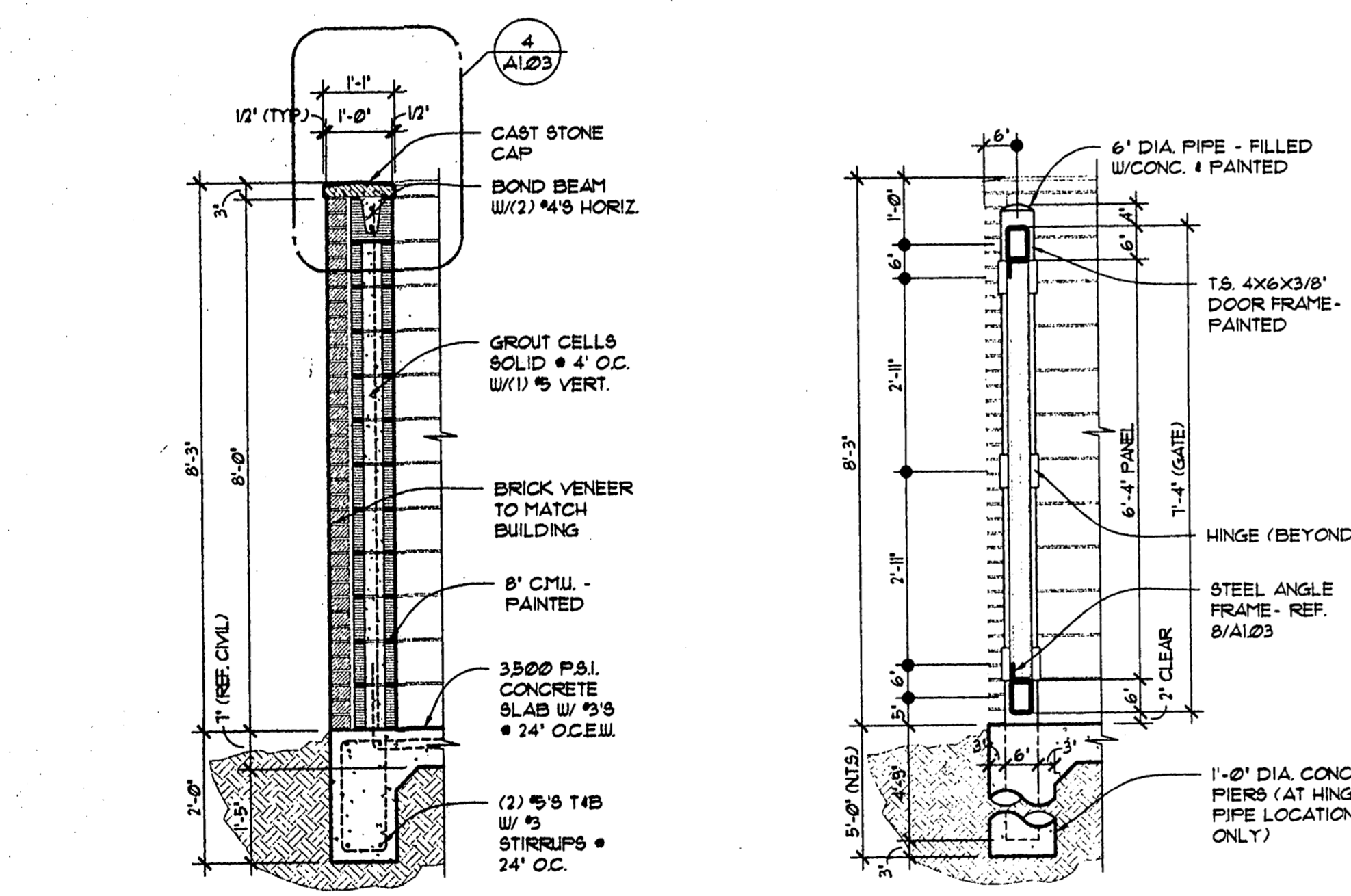
2 DUMPSTER ENCLOSURE
 A1.03 SCALE: 1/4" = 1'-0"



3 DUMPSTER ENCLOSURE
 A1.03 SCALE: 1/4" = 1'-0"

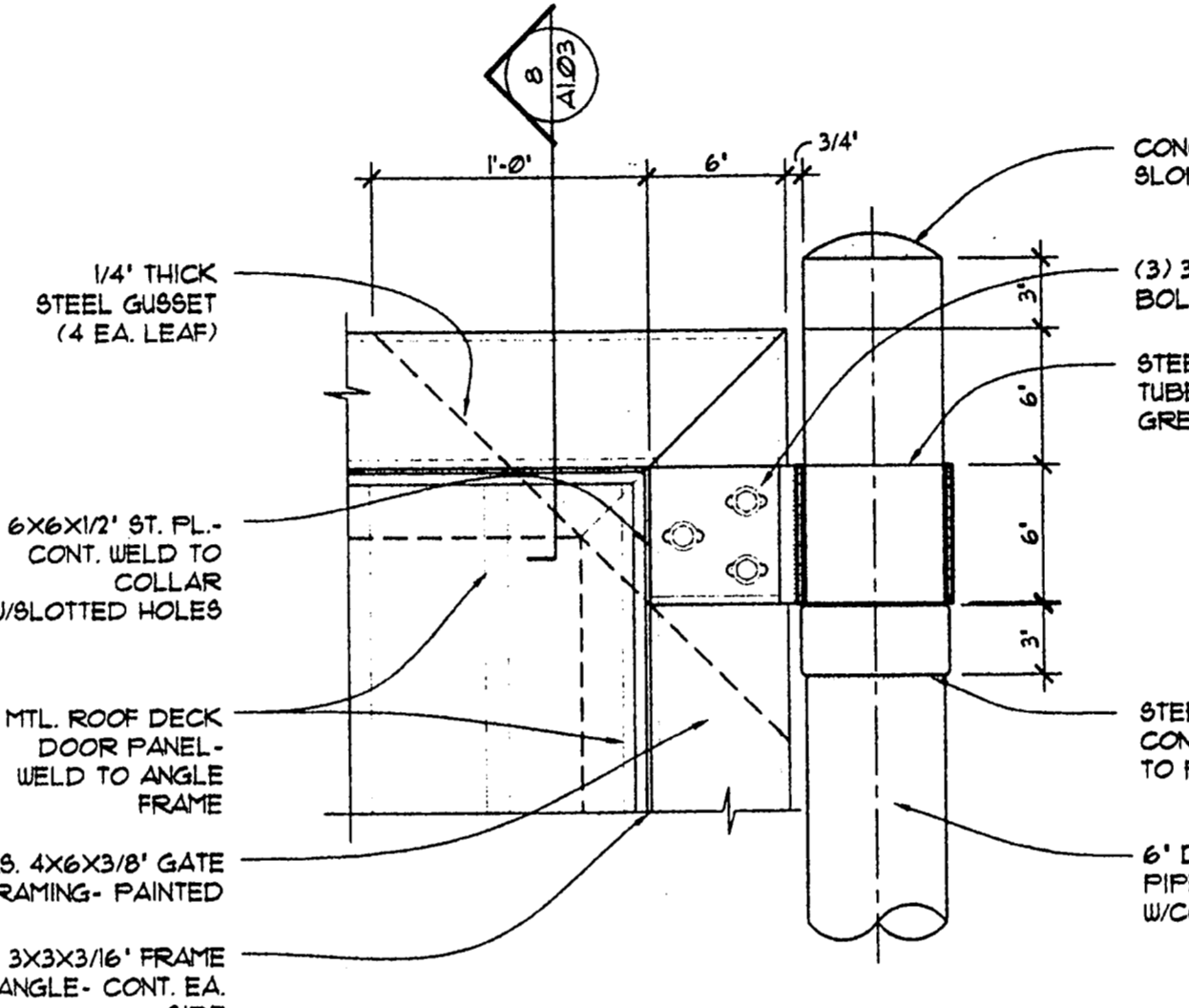


4 DETAIL - WALL CAP
 A1.03 SCALE: 3" = 1'-0"

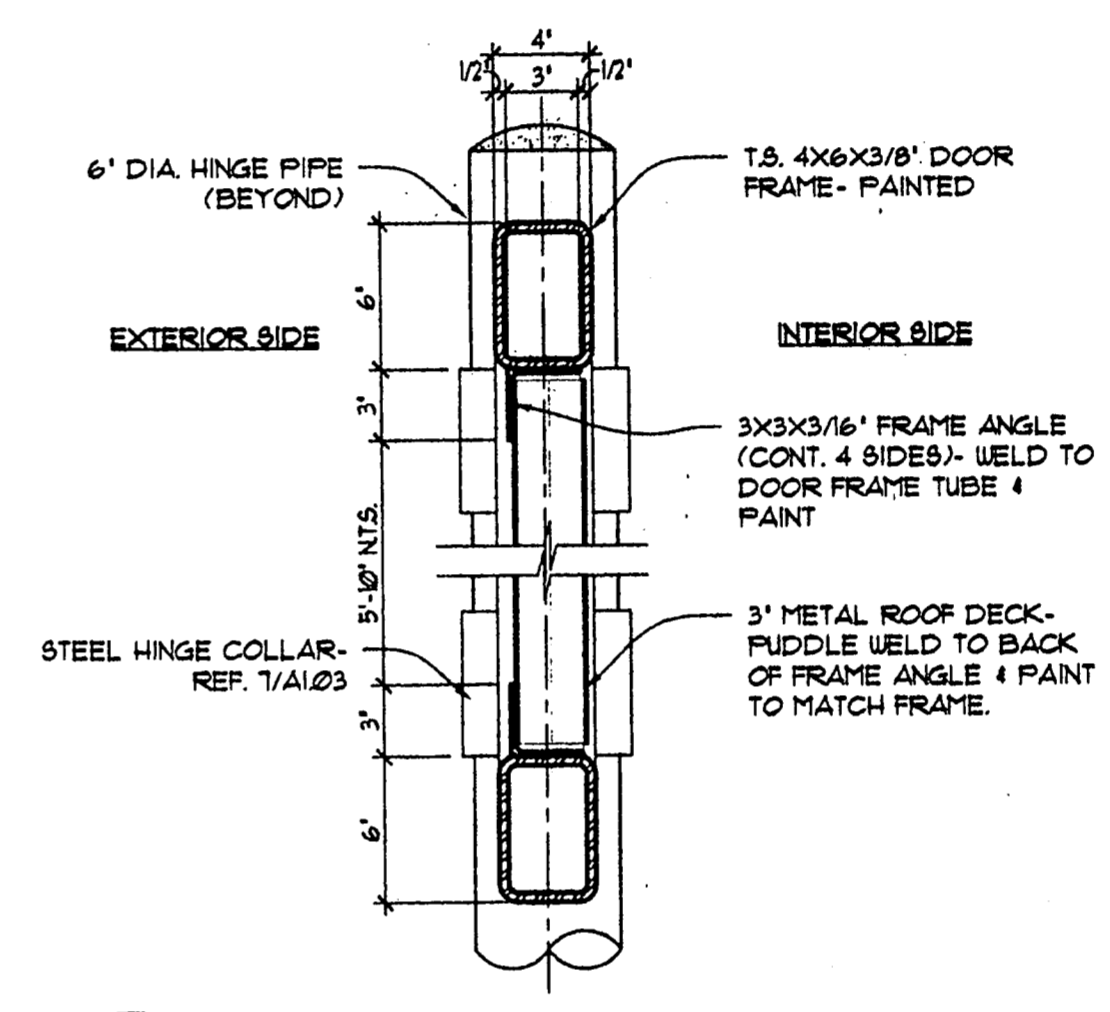


5 SECTION @ DUMPSTER
 A1.03 SCALE: 1/2" = 1'-0"

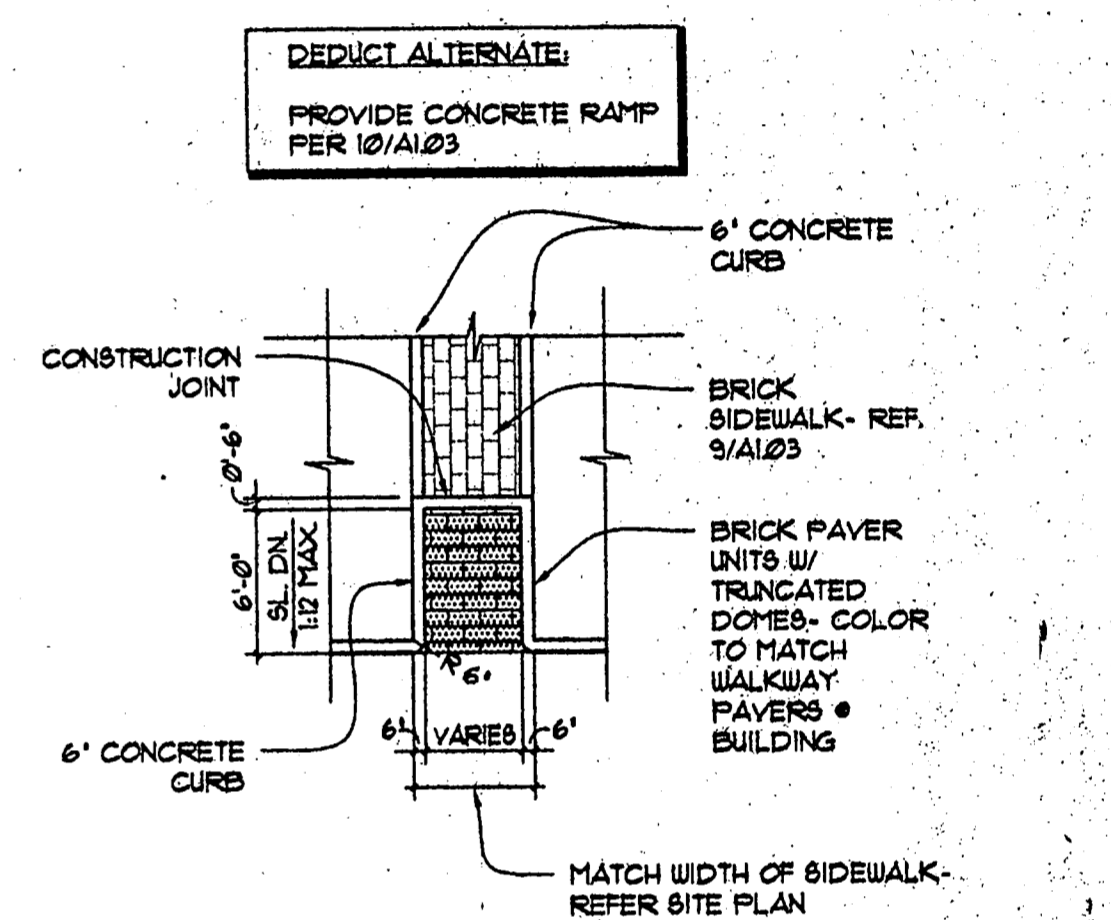
6 SECTION @ DOOR
 A1.03 SCALE: 1/2" = 1'-0"



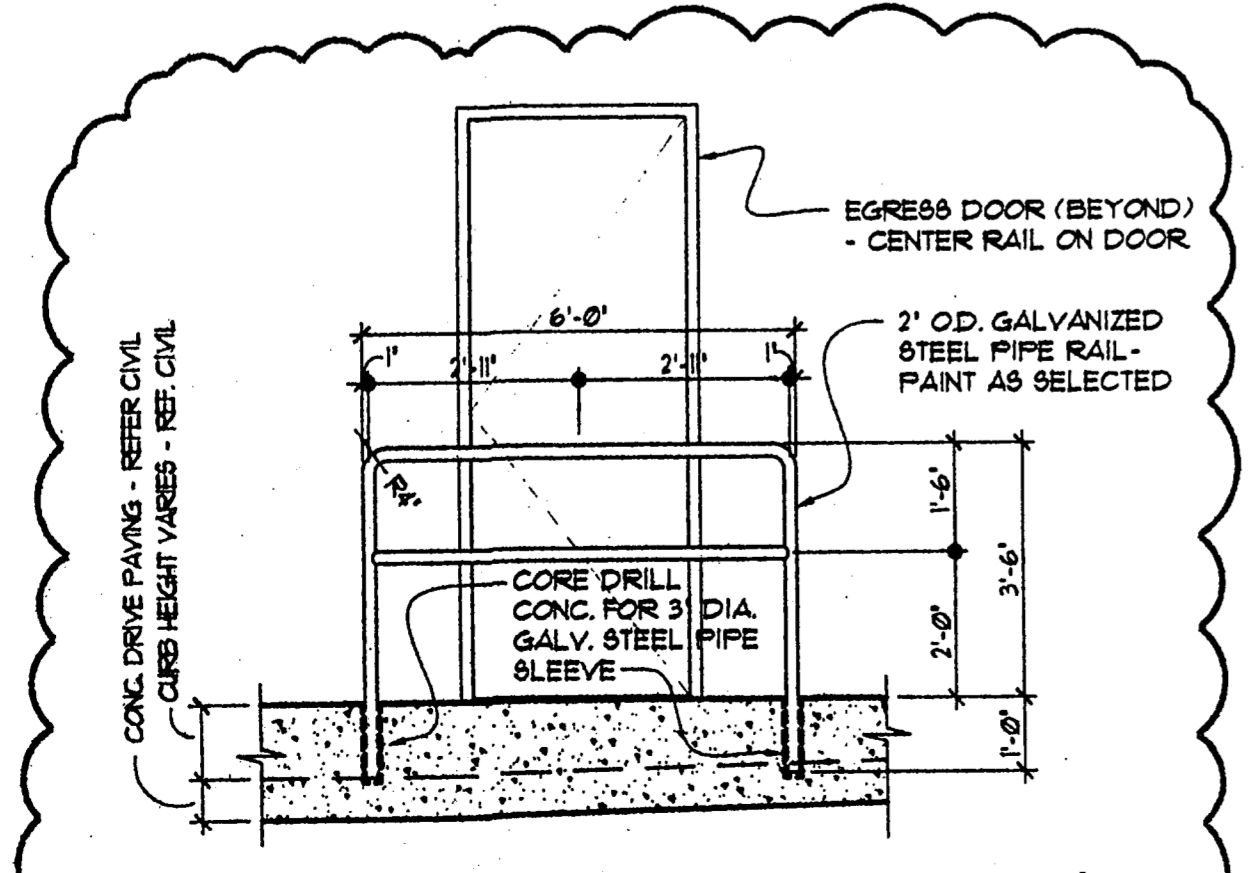
7 DETAIL - DUMPSTER HINGE
 A1.03 SCALE: 1-1/2" = 1'-0"



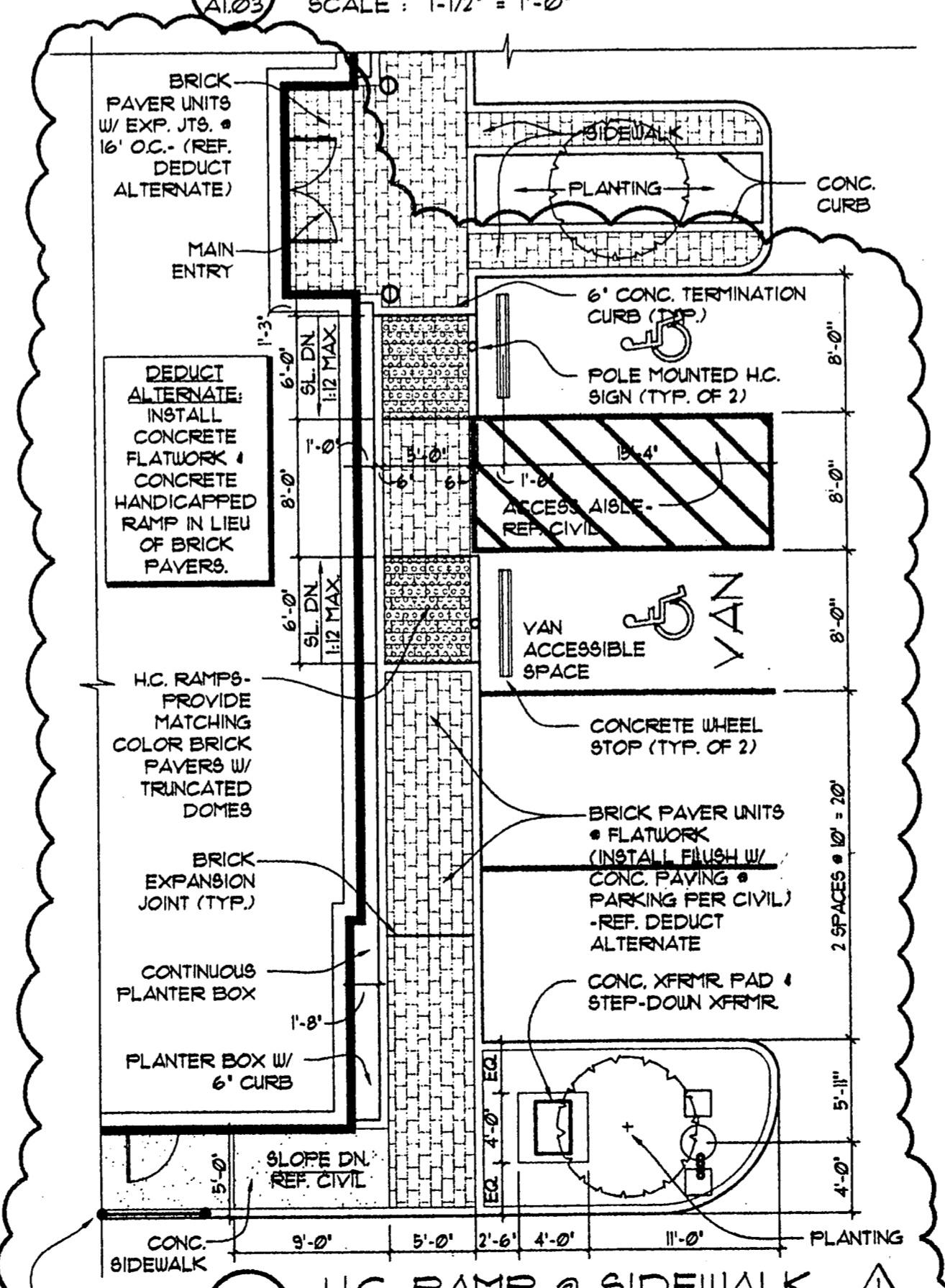
8 DETAIL - DUMPSTER GATE
 A1.03 SCALE: 1-1/2" = 1'-0"



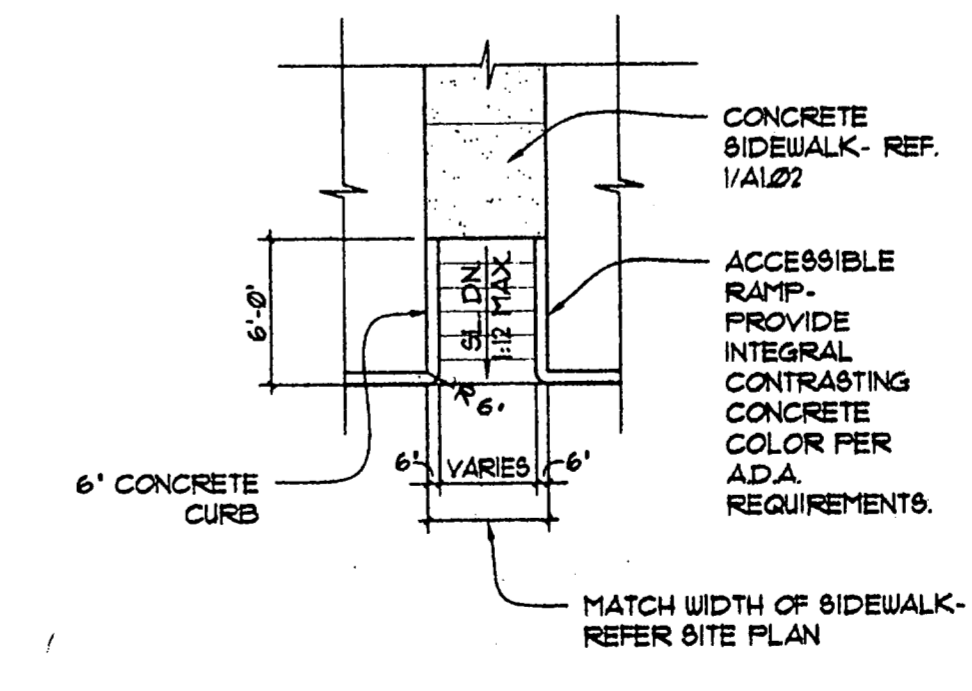
12 BRICK HANDICAPPED RAMP
 A1.03 SCALE: 1/8" = 1'-0"



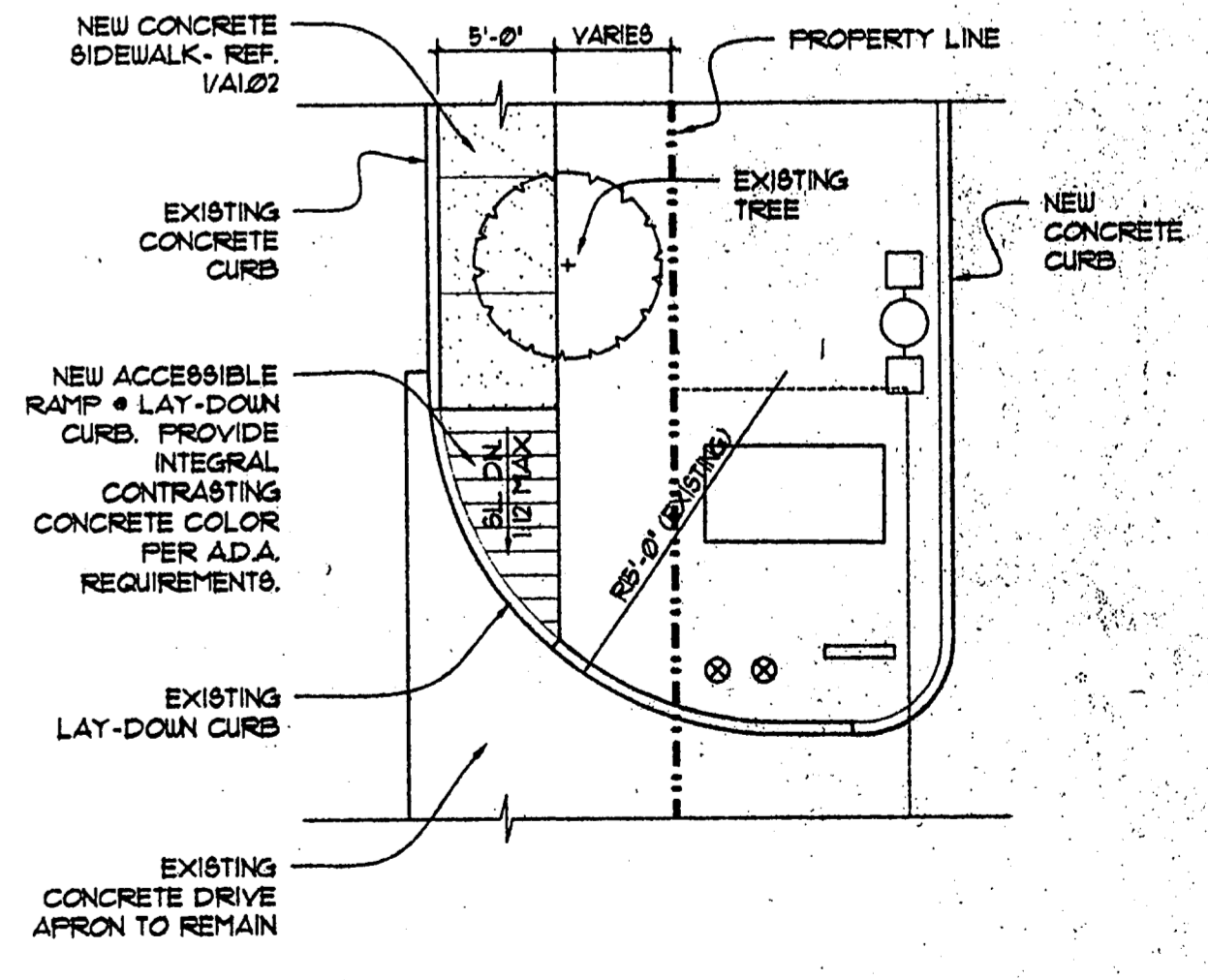
12 REMOVABLE GUARDRAIL
 A1.03 SCALE: 3/8" = 1'-0"



9 H.C. RAMP @ SIDEWALK
 A1.03 SCALE: 1/8" = 1'-0"

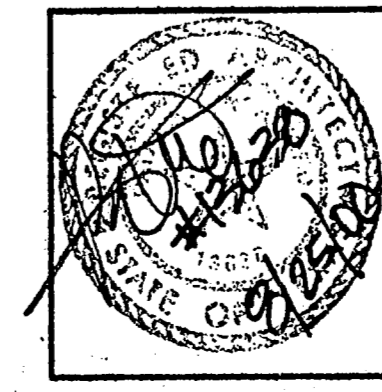


10 TYPICAL HANDICAPPED RAMP
 A1.03 SCALE: 1/8" = 1'-0"



11 HANDICAPPED RAMP
 A1.03 SCALE: 1/8" = 1'-0"

NOTE: REMOVE FLATWORK PAVING 4" FOR MORTAR SET BRICK PAVERS WHERE SHOWN.



R-F
 ROGERS-FORD ARCHITECTS - INTERIOR DESIGN
 3616 THOMAS AVENUE DALLAS, TEXAS 75204
 TELEPHONE (214) 871-9388 FAX (214) 871-3153

LONE STAR BANK
 4650 BELTLINE ROAD at Beltwood Parkway East ADDISON, TX.
 Project # 1804

07/25/00 ISSUE FOR PERMIT
 08-17-00 ISSUE FOR BID
 08-25-00 ADDENDUM #1

A1.03