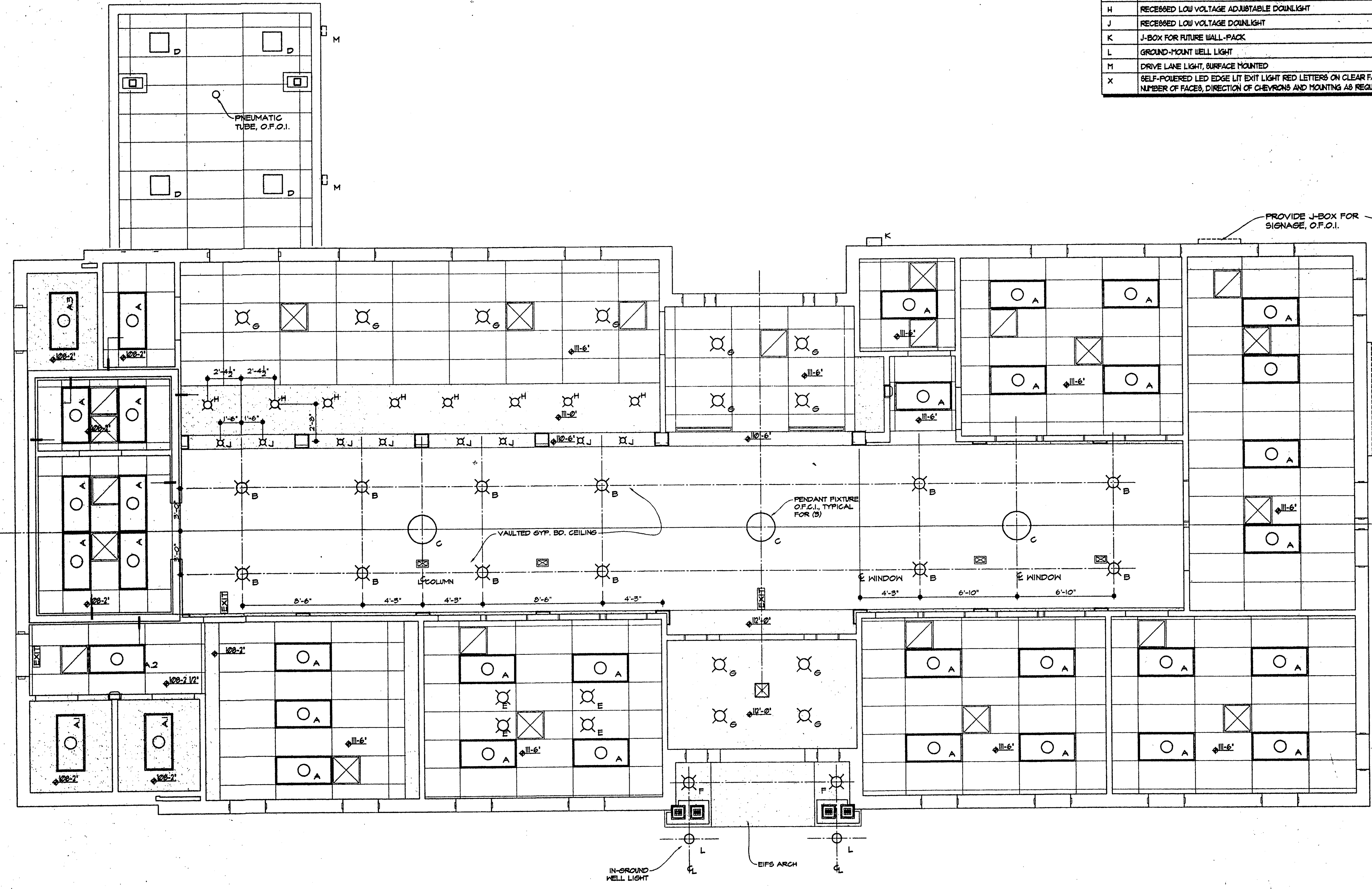


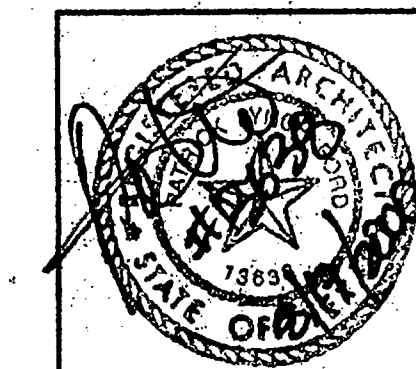
LIGHT SCHEDULE	
TYPE	DESCRIPTION
A	RECESSED 2X4 PARABOLIC FLOURESCENT FIXTURE 21 CELL
A1	RECESSED AIR HANDLING ACRYLIC LENSED FLOURESCENT TROFFER WITH (3) LAMPS
A2	NOT USED (SAME AS 'A')
A3	SURFACE MOUNTED CHANNEL STRIP FLOURESCENT WITH WIRE GUARD AND (2) LAMPS
B	RECESSED DOWNLIGHT WITH CLEAR REFLECTOR
C	PENDANT LIGHT, O.F.C.I.
D	RECESSED SQUARE METAL HALIDE DOWNLIGHT WITH HFF BALLAST AND GLASS LENS
E	RECESSED MULTI-PURPOSE ADJUSTABLE ACCENT WITH CLEAR REFLECTOR
F	EXTERIOR DOWNLIGHT
G	RECESSED DOWNLIGHT WITH CLEAR REFLECTOR
H	RECESSED LOW VOLTAGE ADJUSTABLE DOWNLIGHT
J	RECESSED LOW VOLTAGE DOWNLIGHT
K	J-BOX FOR FUTURE WALL-PACK
L	GROUND-MOUNT WELL LIGHT
M	DRIVE LANE LIGHT, SURFACE MOUNTED
X	SELF-POWERED LED EDGE LIT EXIT LIGHT RED LETTERS ON CLEAR FACE. NUMBER OF FACES, DIRECTION OF CHEVRONS AND MOUNTING AS REQUIRED.

REFLECTED CEILING PLAN SYMBOL LEGEND	
	LAY-IN ACOUSTICAL CEILING TILE REF. FINISH SCHEDULE/SPECIFICATIONS
	GYP. BOARD CLG. PAINTED REF. FINISH SCHEDULE
	2X4 FLOURESCENT LIGHT REF. LIGHTING SCHED.
	RECESSED INCANDESCENT DOWNLIGHT REF. LIGHTING SCHEDULE
	SUPPLY AIR GRILLE AS SPECIFIED
	RETURN AIR GRILLE AS SPECIFIED



Copyright 2000 ROGERS-FORD, L.L.C.  
Drawing: P:1804 L25 - Addendum 04/06/00  
Drawing: P:1804 L25 - Addendum 04/06/00

**1 REFLECTED CEILING PLAN**  
A2.02 SCALE: 1/4" = 1'-0"



**R-F**  
ROGERS - FORD  
ARCHITECTURE - INTERIOR DESIGN  
2615 THOMAS AVENUE  
DALLAS, TEXAS 75204  
TELEPHONE (214) 871-9388  
FAX (214) 871-3155

LONE STAR BANK  
4650 BELTLINE ROAD  
at Bellwood Parkway East  
ADDISON, TX  
Project # 1804

7-25-2000 PERMIT ISSUE  
8-17-2000 ISSUE FOR BID

**A2.02**

**REFLECTED CEILING PLAN**