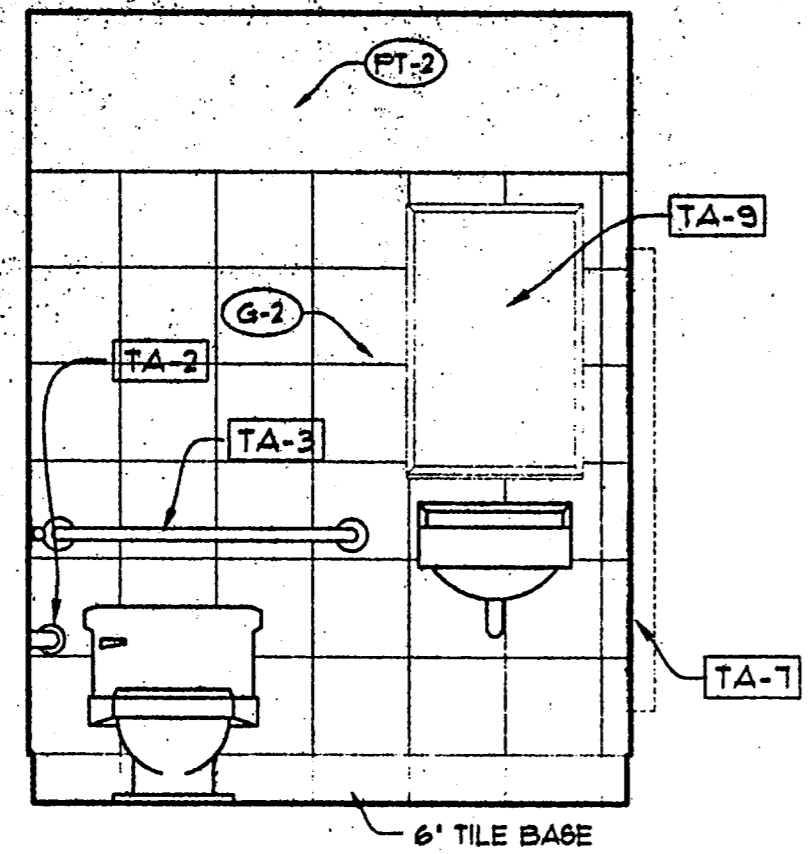
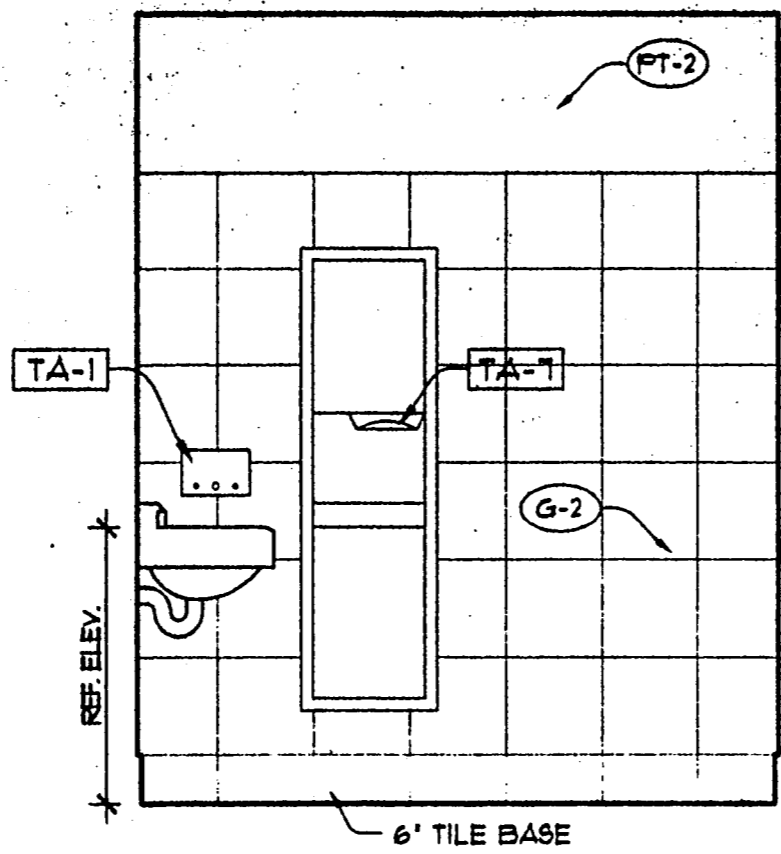


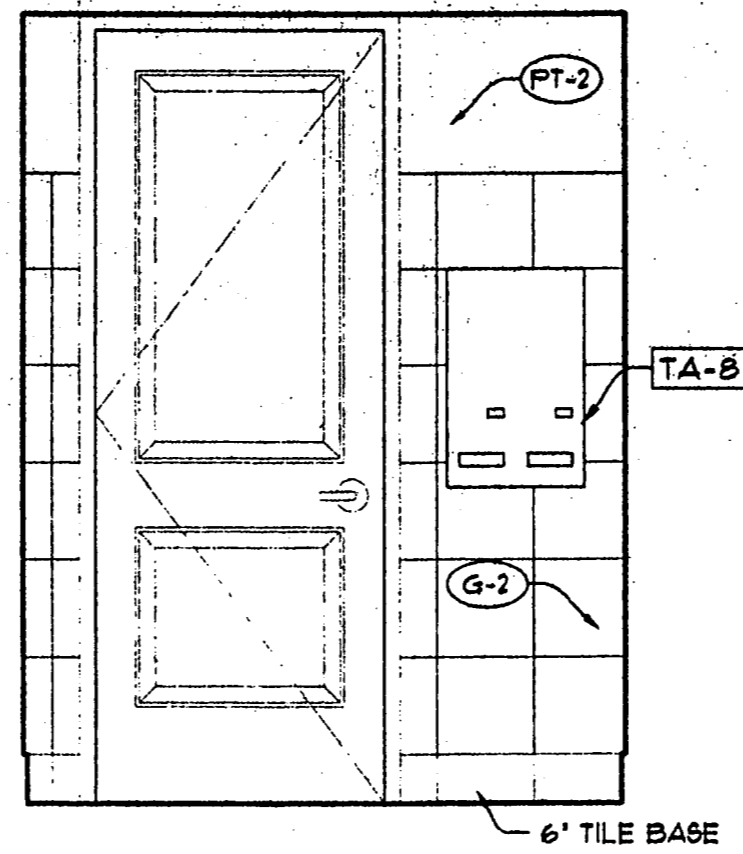
1 WOMEN'S 120
A5.03 SCALE: 1/2" = 1'-0"



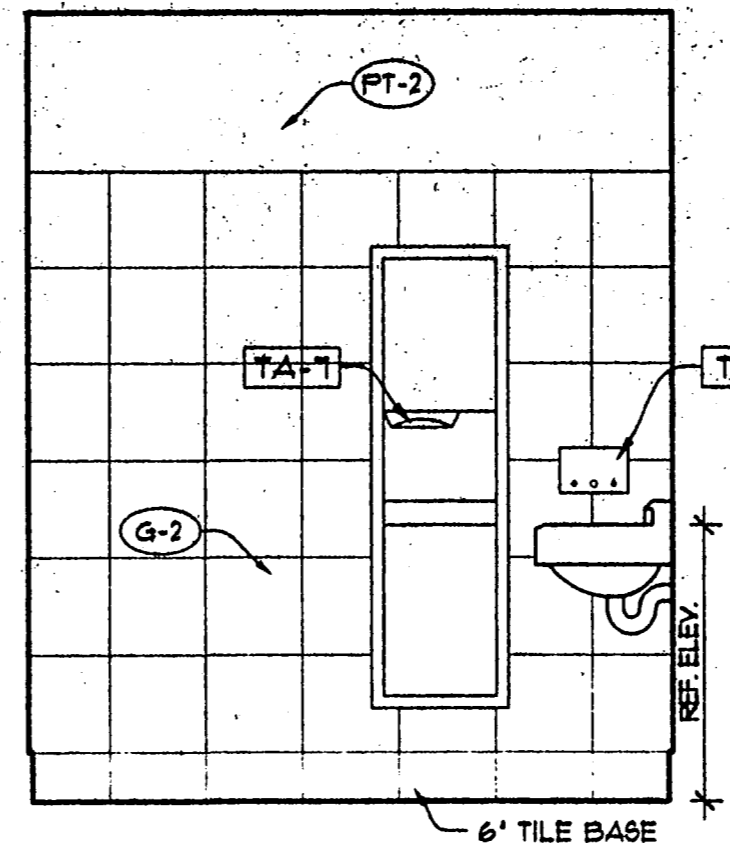
2 WOMEN'S 120
A5.03 SCALE: 1/2" = 1'-0"



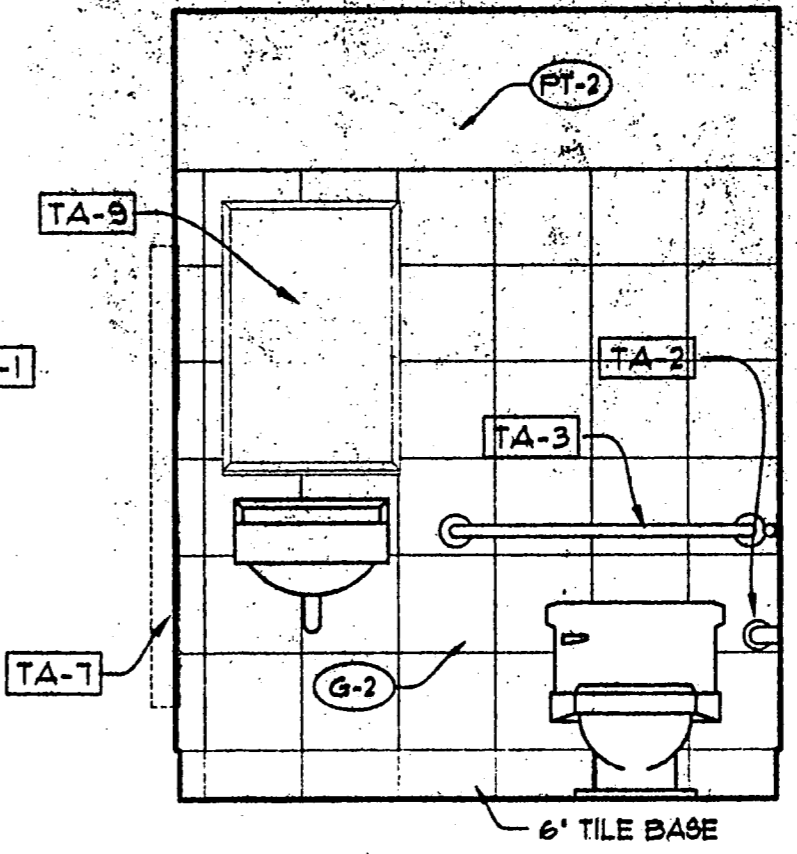
3 WOMEN'S 120
A5.03 SCALE: 1/2" = 1'-0"



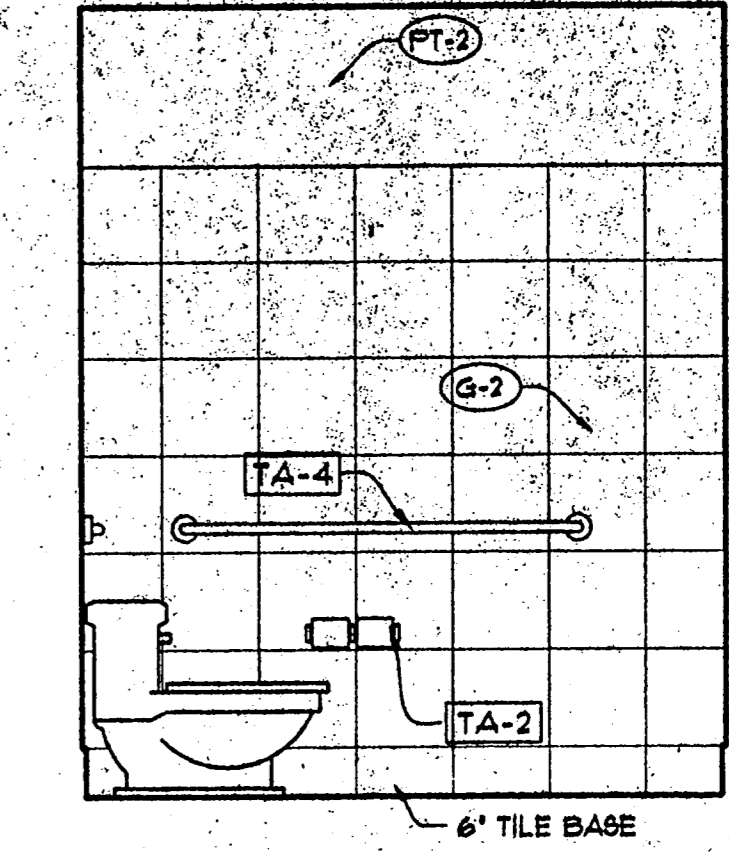
4 WOMEN'S 120
A5.03 SCALE: 1/2" = 1'-0"



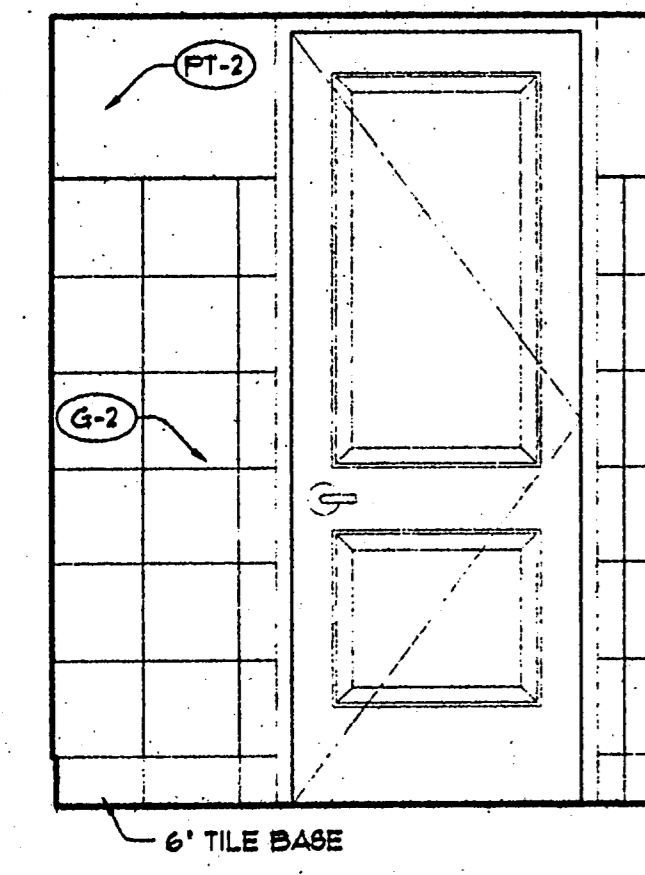
5 MEN'S 119
A5.03 SCALE: 1/2" = 1'-0"



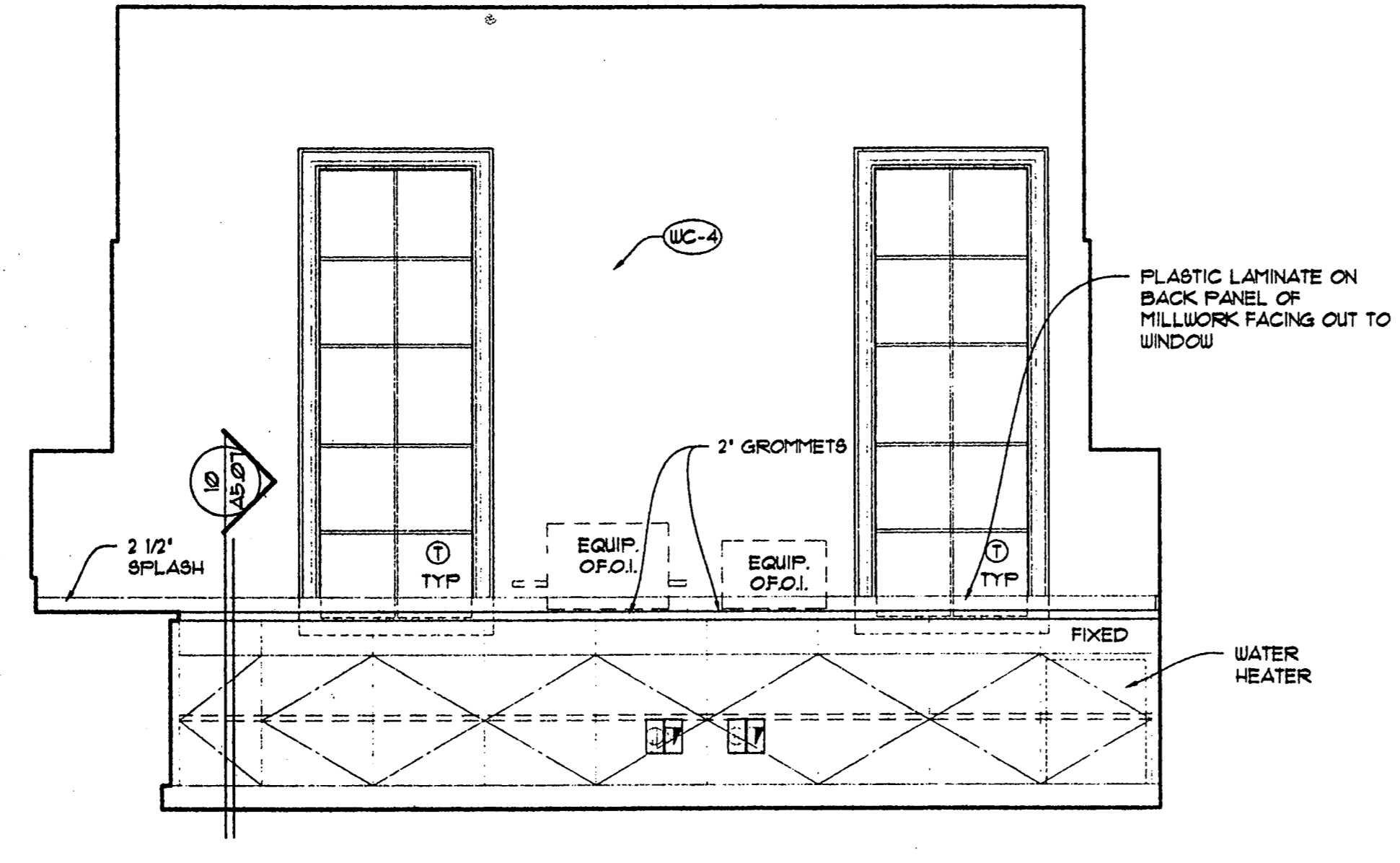
6 MEN'S 119
A5.03 SCALE: 1/2" = 1'-0"



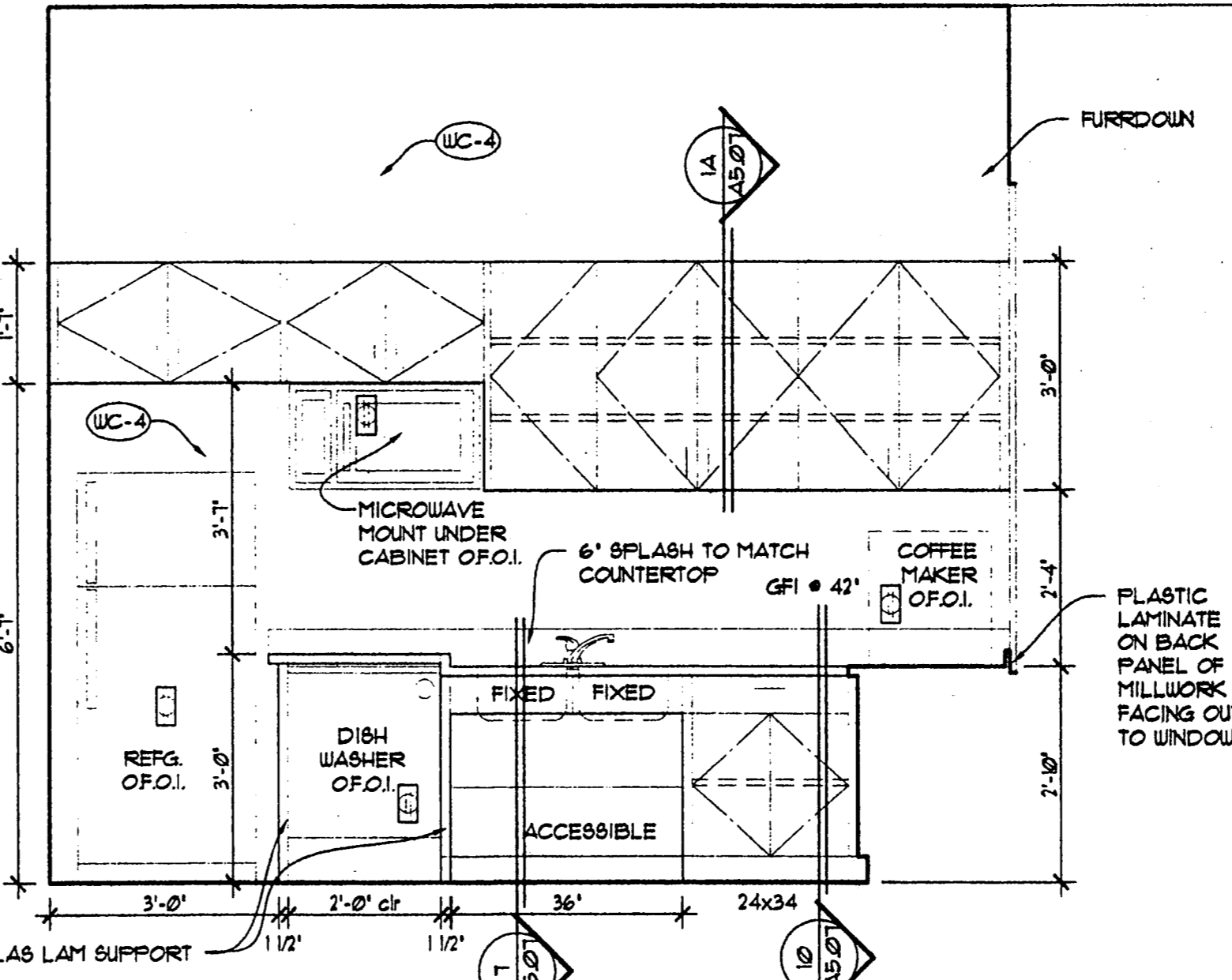
7 MEN'S 119
A5.03 SCALE: 1/2" = 1'-0"



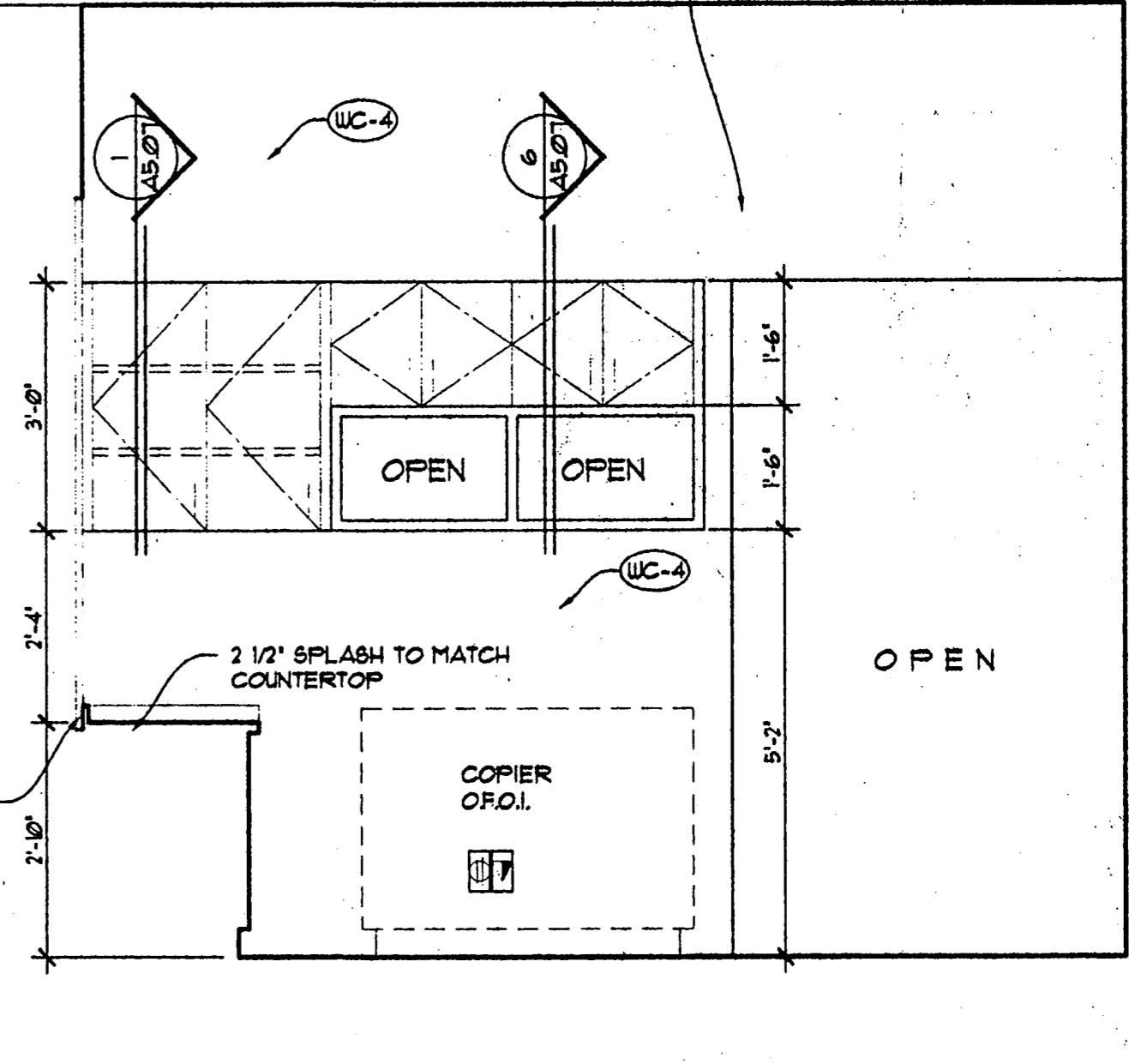
8 MEN'S 119
A5.03 SCALE: 1/2" = 1'-0"



9 WORK 117
A5.03 SCALE: 1/2" = 1'-0"



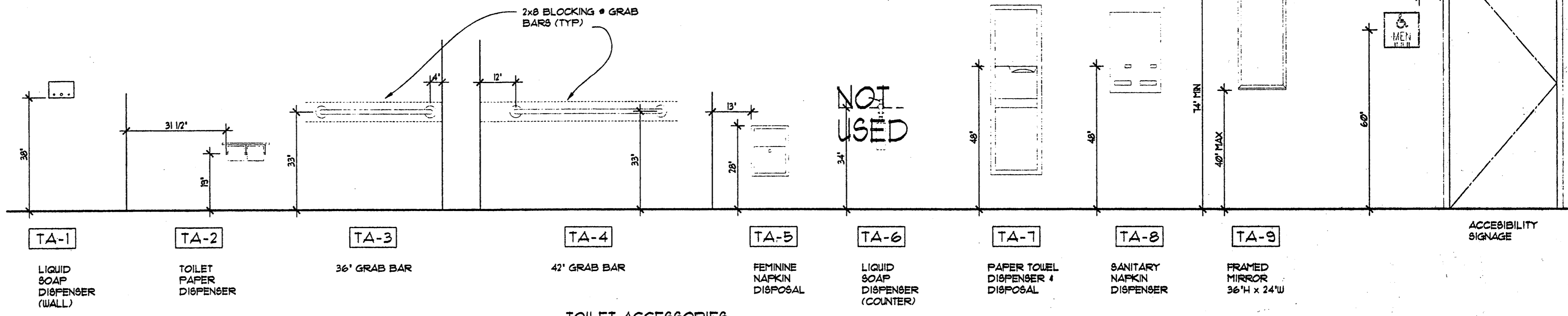
10 WORK 117
A5.03 SCALE: 1/2" = 1'-0"



11 WORK 117
A5.03 SCALE: 1/2" = 1'-0"

TOILET ACCESSORIES		
NUMBER	ITEM DESCRIPTION	REMARKS
TA-1	Liquid Soap Dispenser, recessed	Bobrick B-326
TA-2	Toilet Paper Dispenser	Bobrick B-2740
TA-3	Grab Bar--36"	Bobrick B-6826 x 36"
TA-4	Grab Bar--42"	Bobrick B-6826 x 42"
TA-5	Feminine Napkin Disposal, recessed	Bobrick B-353
TA-6	Not Used	
TA-7	Paper Towel Dispenser and Receptacle, recessed	Bobrick B-3823
TA-8	Feminine Napkin Dispenser recessed	Bobrick B-3520 x 2 (50 cents)
TA-9	Framed Mirror	Bobrick B-290 24"x36"

NOTES:
1. Refer Interior Elevations on sheet A5.01 for mounting heights UNO.



12 MOUNTING HEIGHTS
A5.03 SCALE: 1/2" = 1'-0"

Copyright © 2000 ROGERS-FORD, L.P. Drawing: P11804_LSP - Addison Auto/6-Drawing/Subjective-14 drawings/1804A5.03.dwg at Aug 18, 2000 9:42am by chris

	R-F ROGERS-FORD ARCHITECTURE - INTERIOR DESIGN 2616 THOMAS AVENUE DALLAS, TEXAS 75204 TELEPHONE (214) 971-9188 FAX (214) 971-3155	LONE STAR BANK Belwood Parkway East at Bellline Road Addison, TX Project # 1804	7-25-00 ISSUED FOR PERMIT 8-17-00 ISSUE FOR BID	A5.03
	RESTROOM ELEVATIONS			