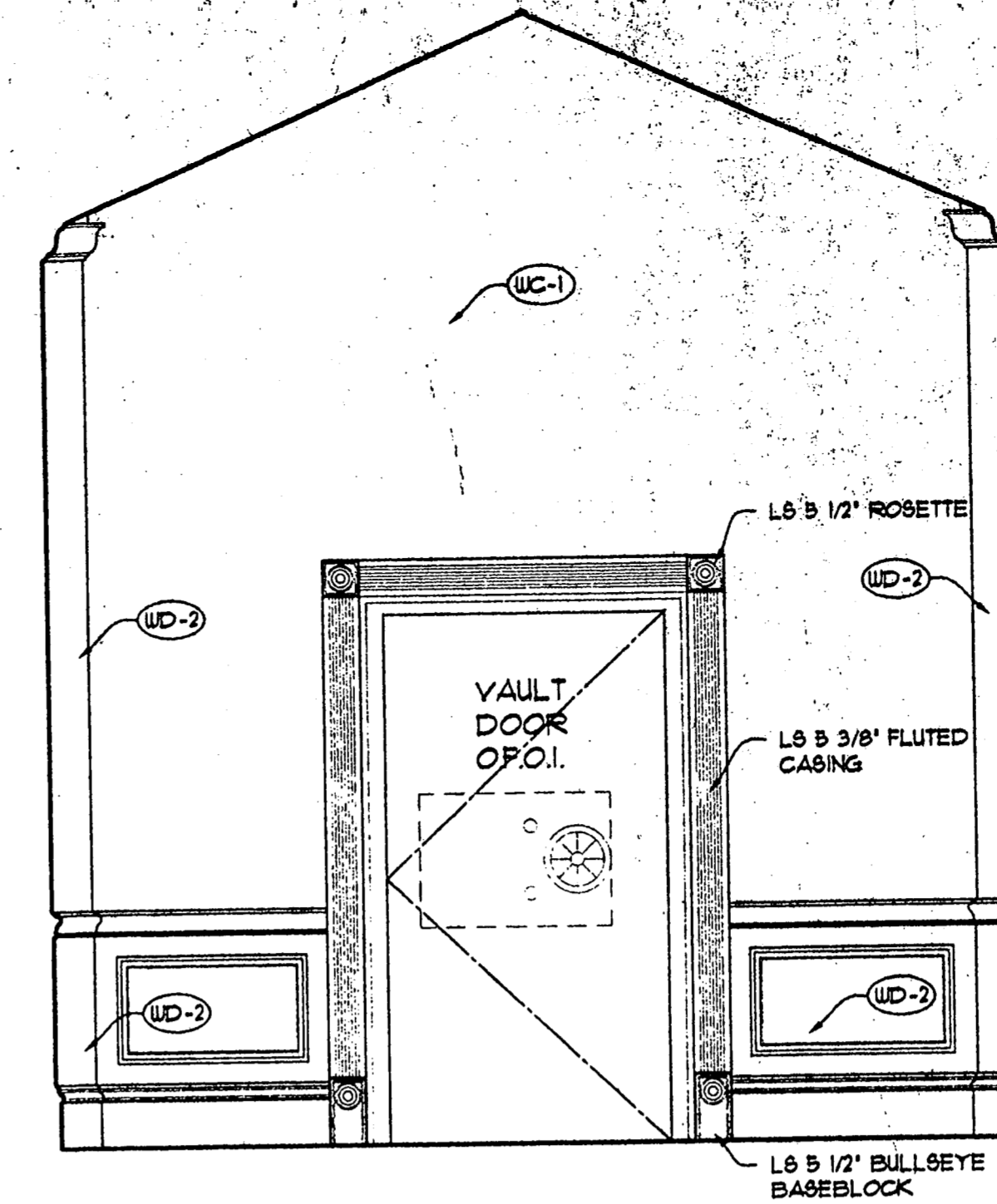
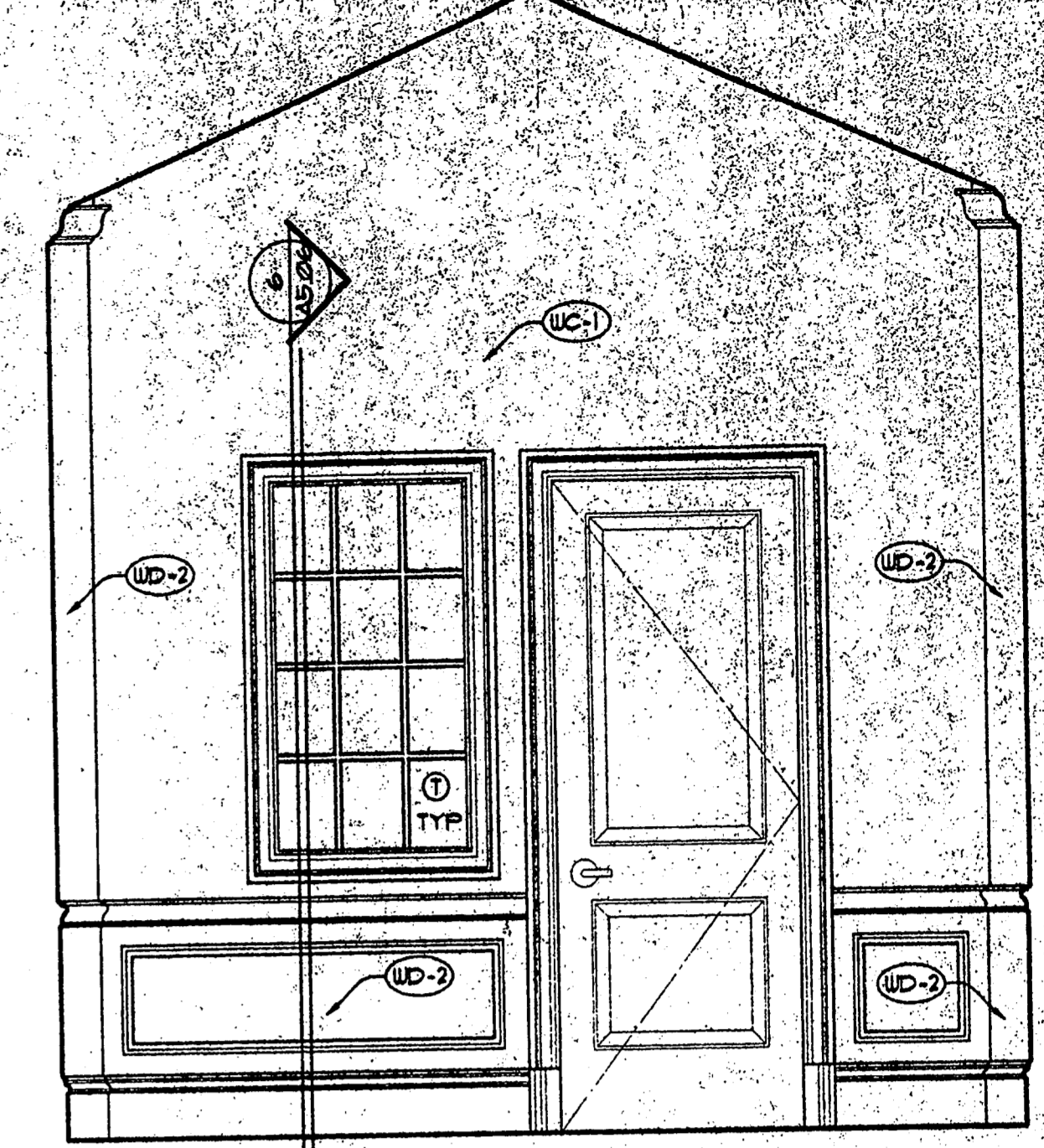


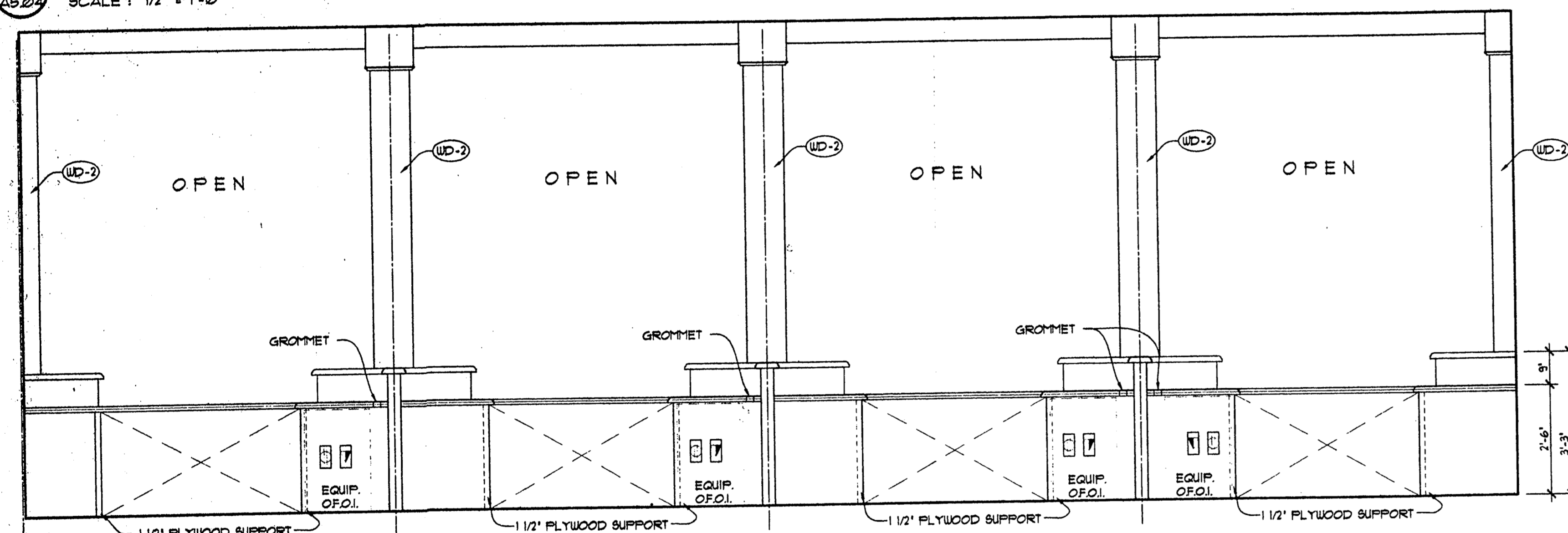
1 TELLER 112
SCALE: 1/2" = 1'-0"



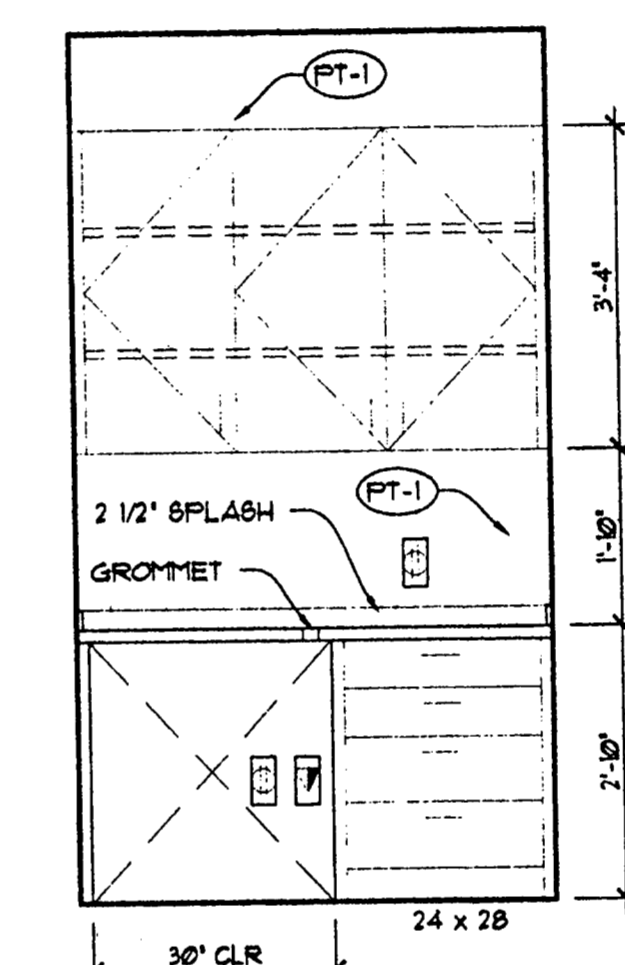
2 LOBBY III
SCALE: 1/2" = 1'-0"



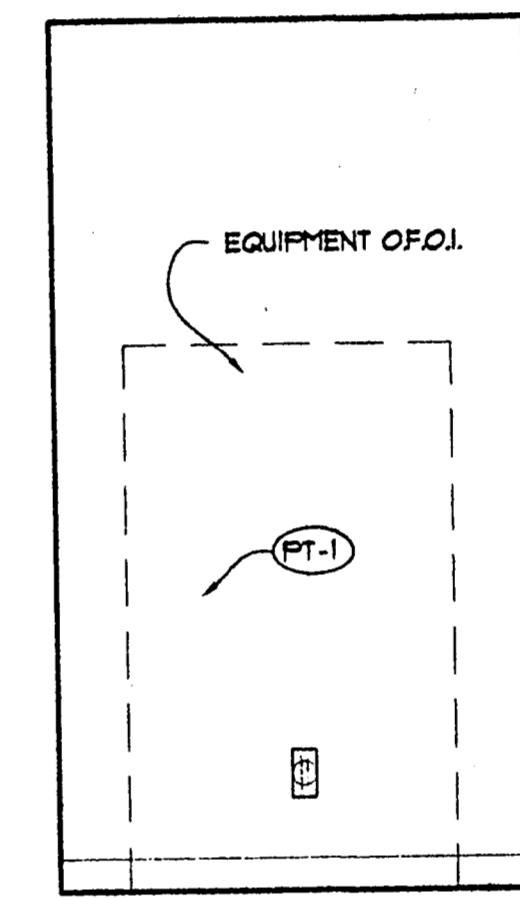
3 WAITING 104
SCALE: 1/2" = 1'-0"



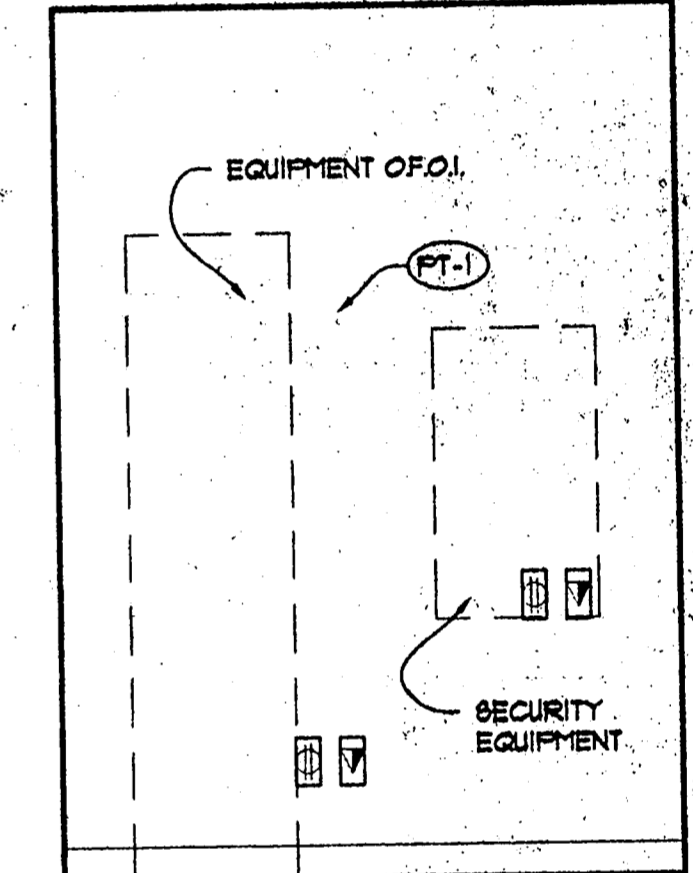
4 TELLER 112
SCALE: 1/2" = 1'-0"



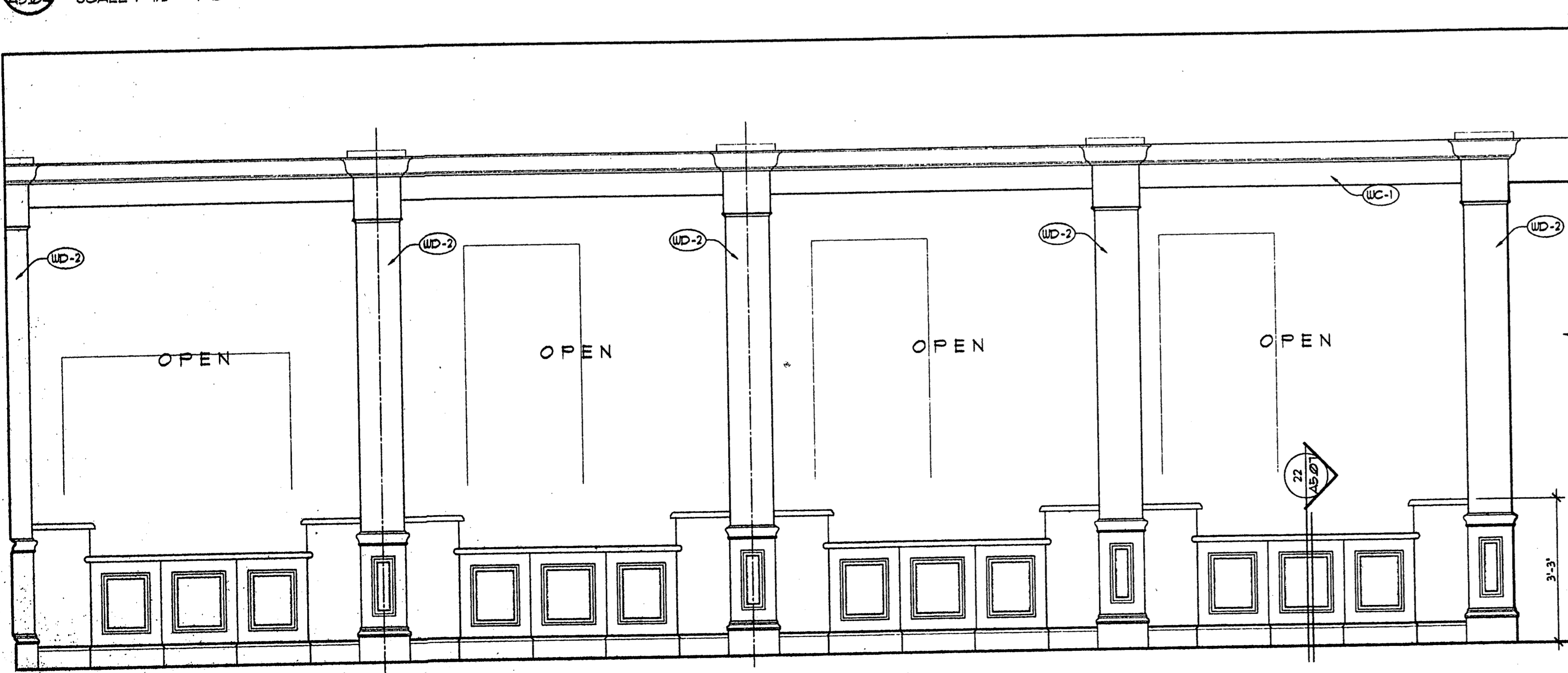
5 CASH 115
SCALE: 1/2" = 1'-0"



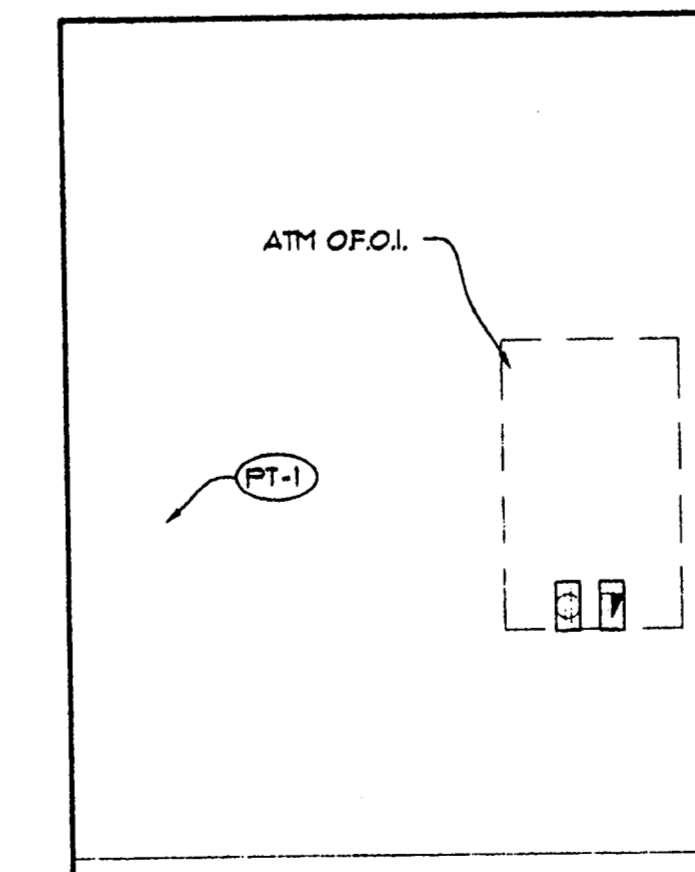
6 CASH 115
SCALE: 1/2" = 1'-0"



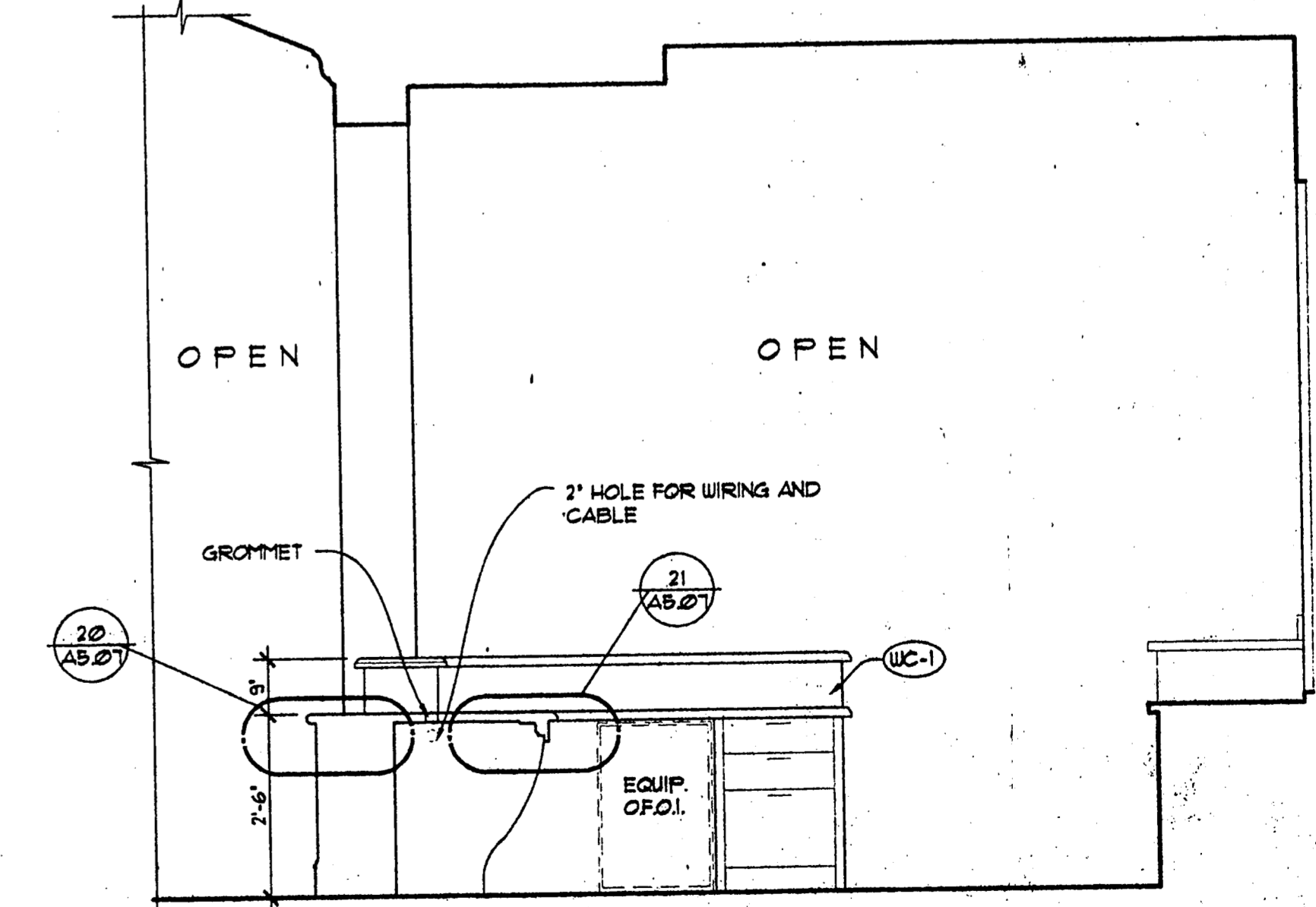
7 ATM 106
SCALE: 1/2" = 1'-0"



8 LOBBY III
SCALE: 1/2" = 1'-0"

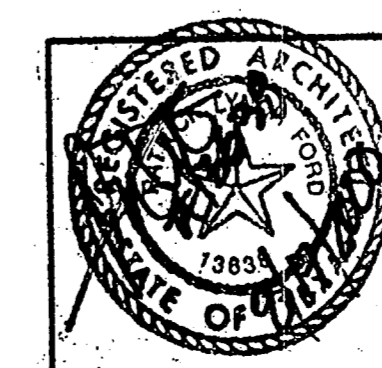


9 ATM 106
SCALE: 1/2" = 1'-0"



10 TELLER 112
SCALE: 1/2" = 1'-0"

Copyright 2000 ROGERS-FORD, L.C. Drawing: P11804.LBS - Address Arch-Drawings-tablet-14 drawings1804A5.04.dwg at Aug. 18, 2000-11:43am by cbrs



R-F
ROGERS-FORD
ARCHITECTURE - INTERIOR DESIGN
2616 THOMAS AVENUE
DALLAS, TEXAS 75204
TELEPHONE (214) 871-9388
FAX (214) 871-3155

LONE STAR BANK
Belwood Parkway East
at Beltline Road
Addison, TX
Project # 1804

7-25-00 ISSUED FOR PERMIT
8-17-00 ISSUE FOR BID

A5.04

INTERIOR ELEVATIONS