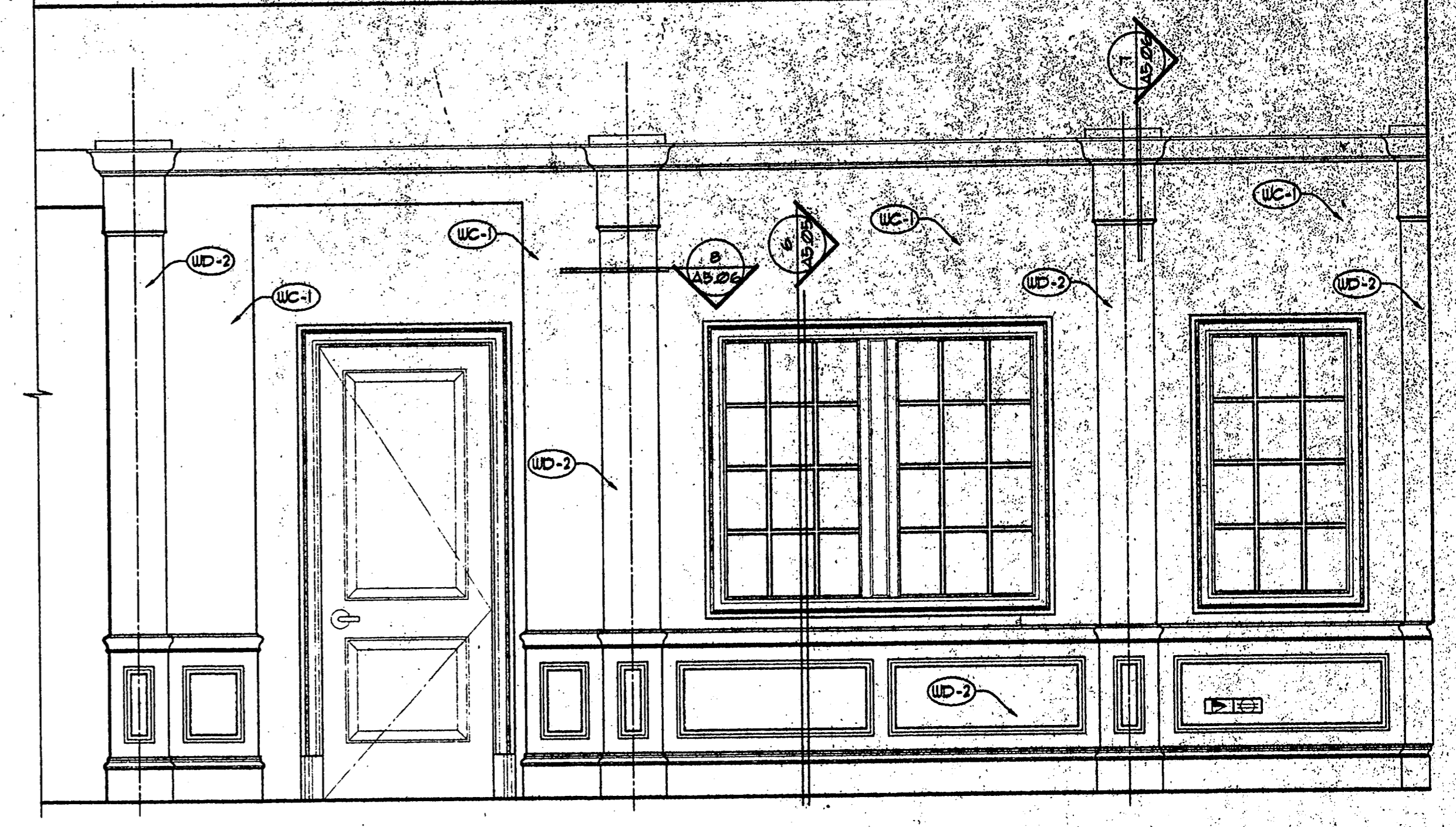
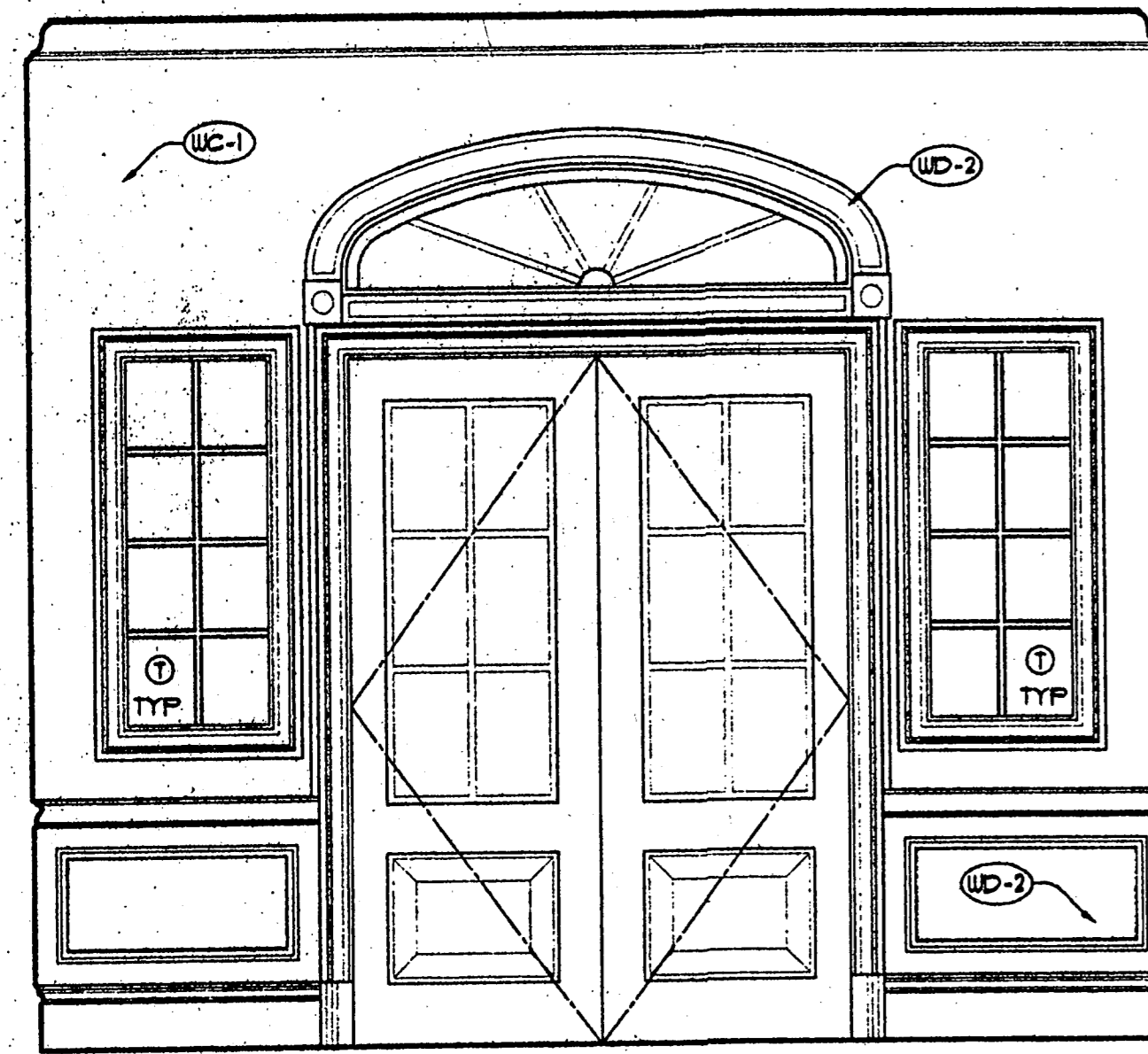




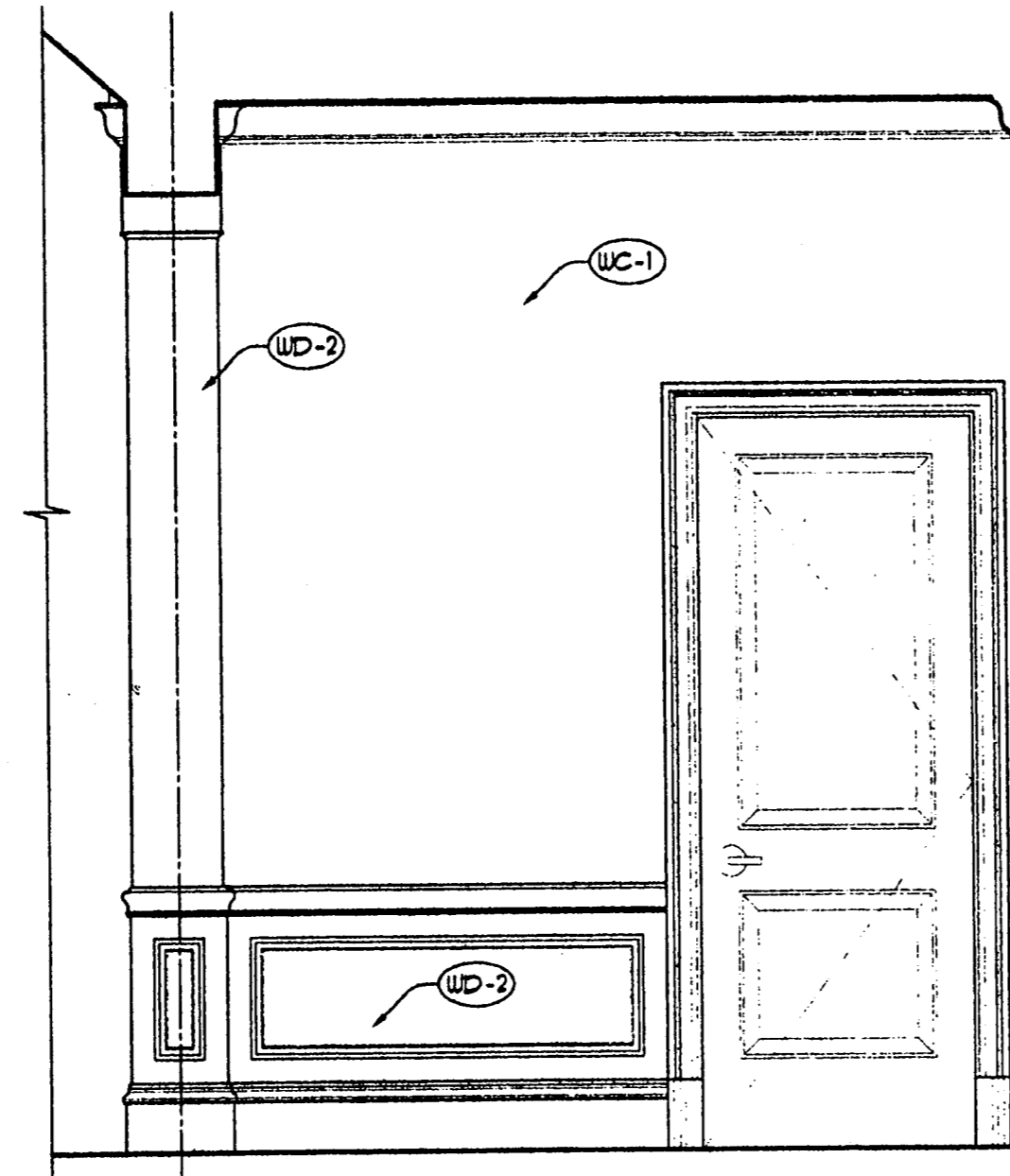
1 LOBBY III
 AS.05 SCALE: 1/2" = 1'-0"



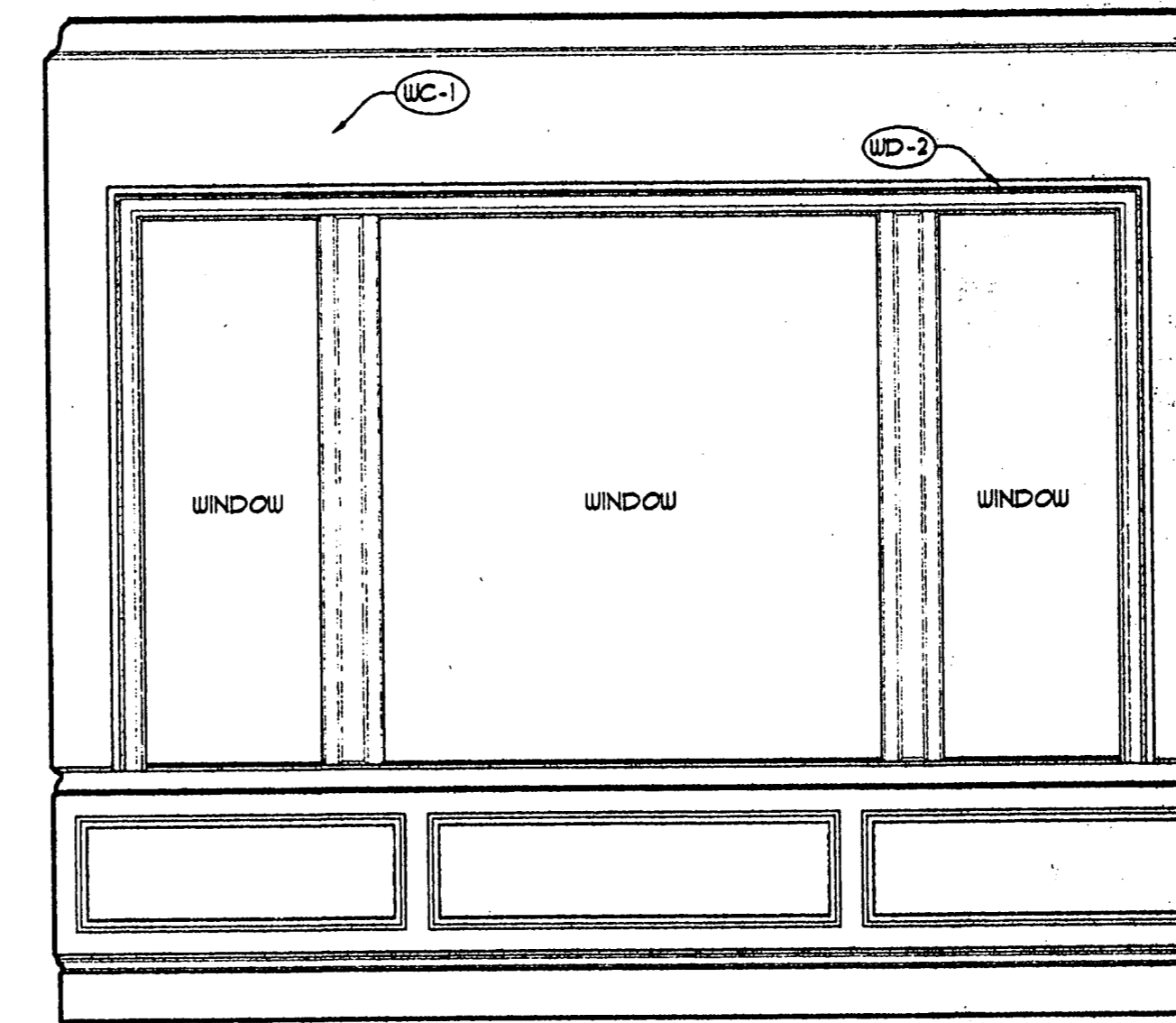
2 WAITING 104
 AS.05 SCALE: 1/2" = 1'-0"



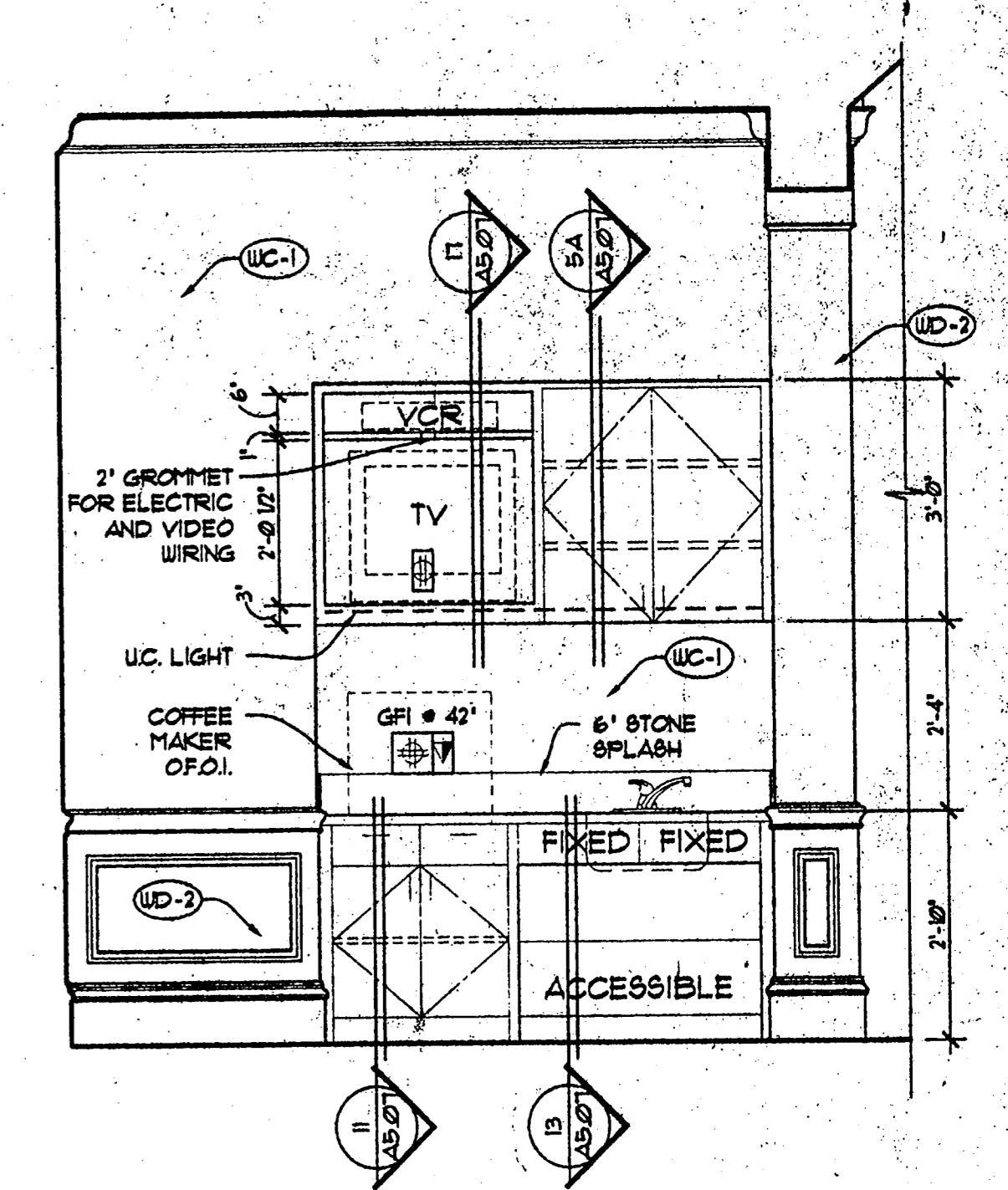
3 WAITING 103
 AS.05 SCALE: 1/2" = 1'-0"



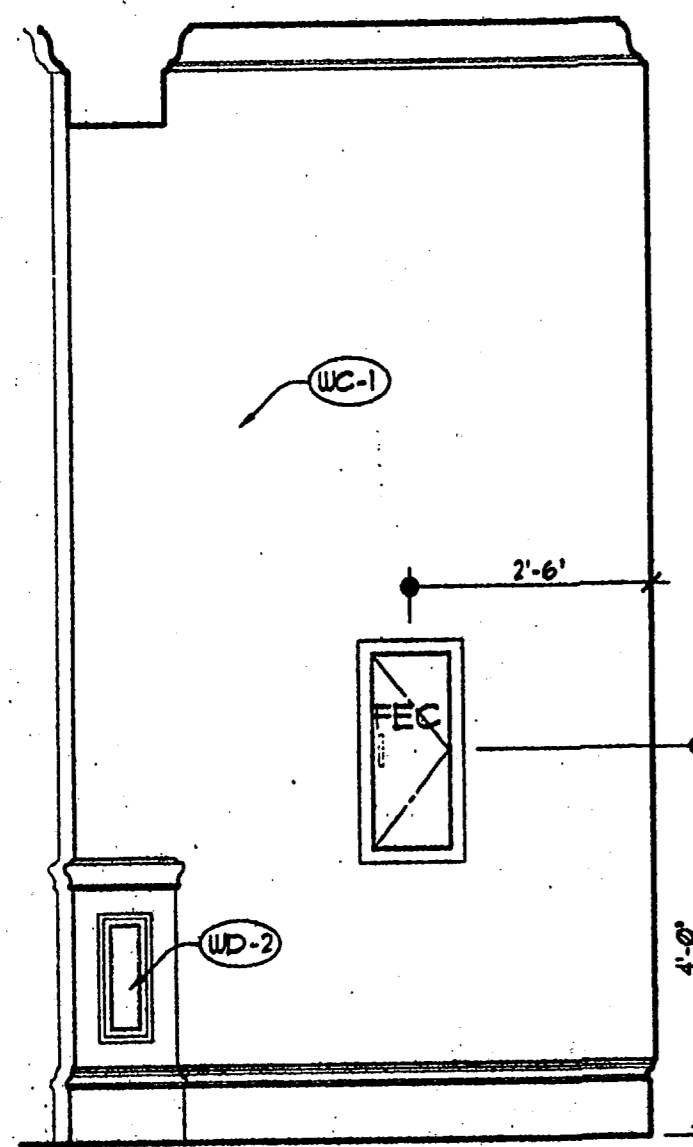
4 WAITING 103
 AS.05 SCALE: 1/2" = 1'-0"



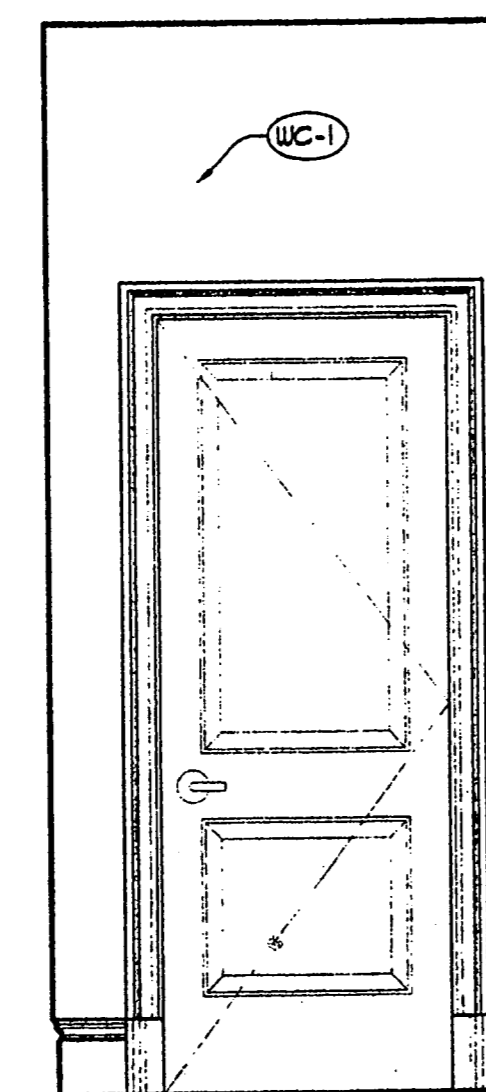
5 WAITING 103
 AS.05 SCALE: 1/2" = 1'-0"



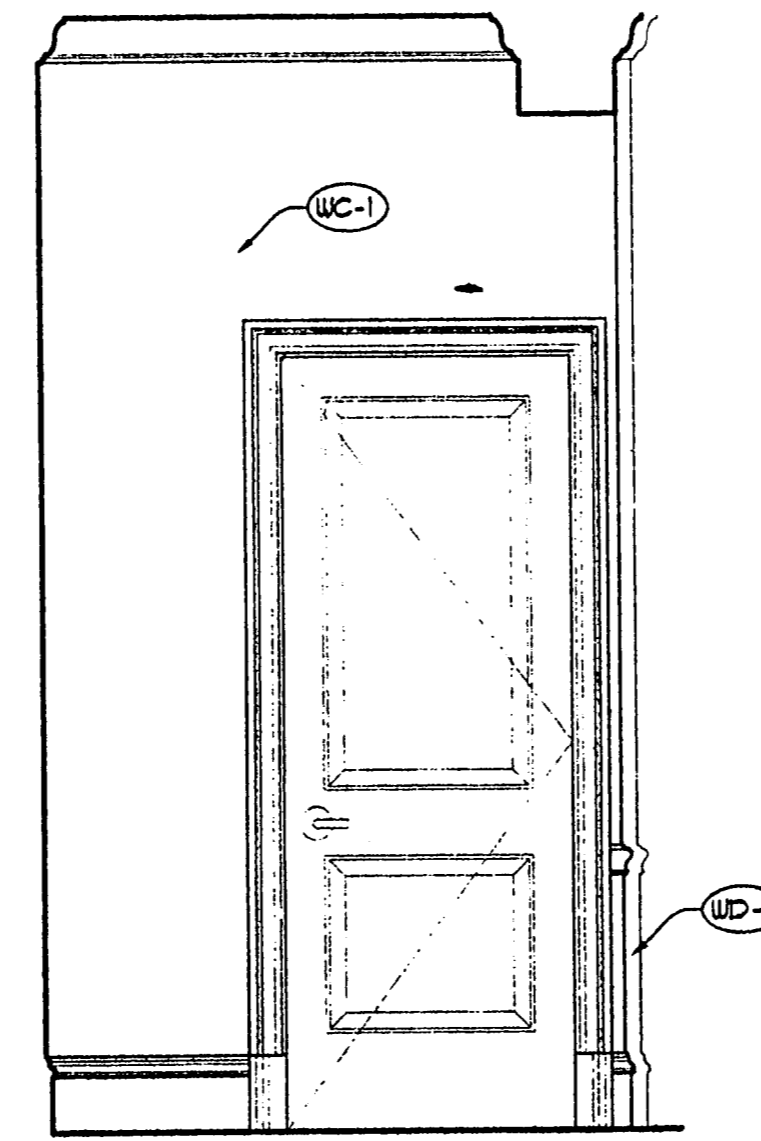
6 WAITING 103
 AS.05 SCALE: 1/2" = 1'-0"



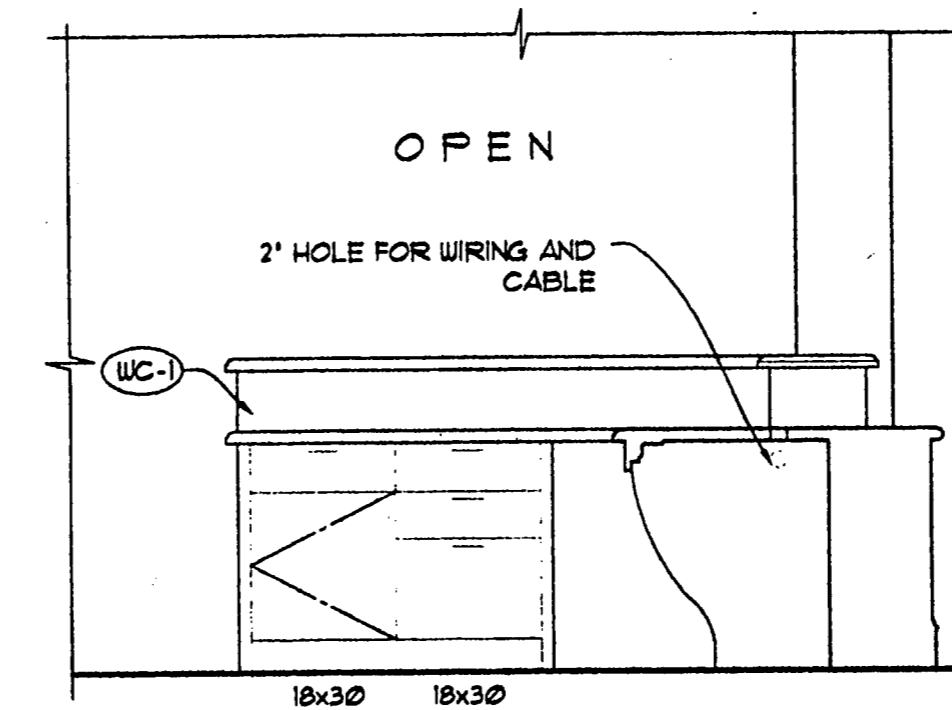
7 HALL 105
 AS.05 SCALE: 1/2" = 1'-0"



8 HALL 105
 AS.05 SCALE: 1/2" = 1'-0"



9 HALL 105
 AS.05 SCALE: 1/2" = 1'-0"



10 TELLER 112
 AS.05 SCALE: 1/2" = 1'-0"

Copyright 2000 ROGERS-FORD, L.P.C. Drawing: P:\1804\1804-1804-1804-1804.dwg at Aug 18, 2000 11:40am by chris



R-F
 ROGERS - FORD
 ARCHITECTURE - INTERIOR DESIGN
 2616 THOMAS AVENUE
 DALLAS, TEXAS 75204
 TELEPHONE (214) 871-9188
 FAX (214) 871-3153

LONE STAR BANK
 Beltwood Parkway East
 at Beltline Road
 Addison, TX
 Project # 1804

7-25-00 ISSUED FOR PERMIT
 8-17-00 ISSUE FOR BID

A5.05