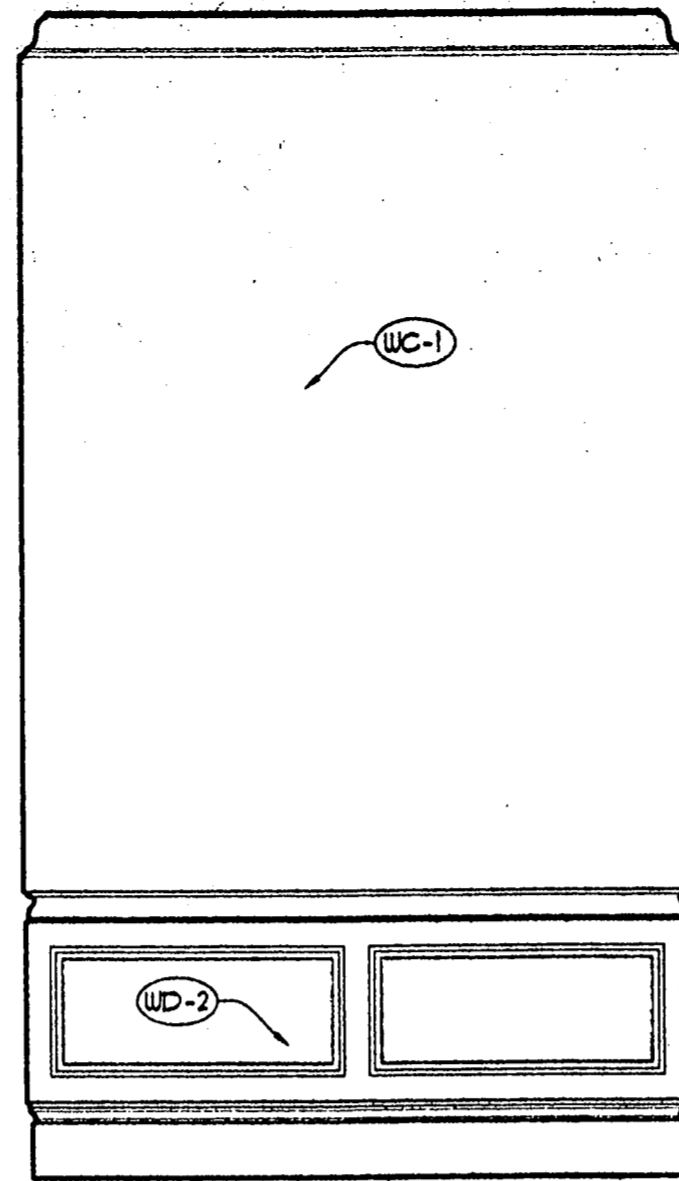
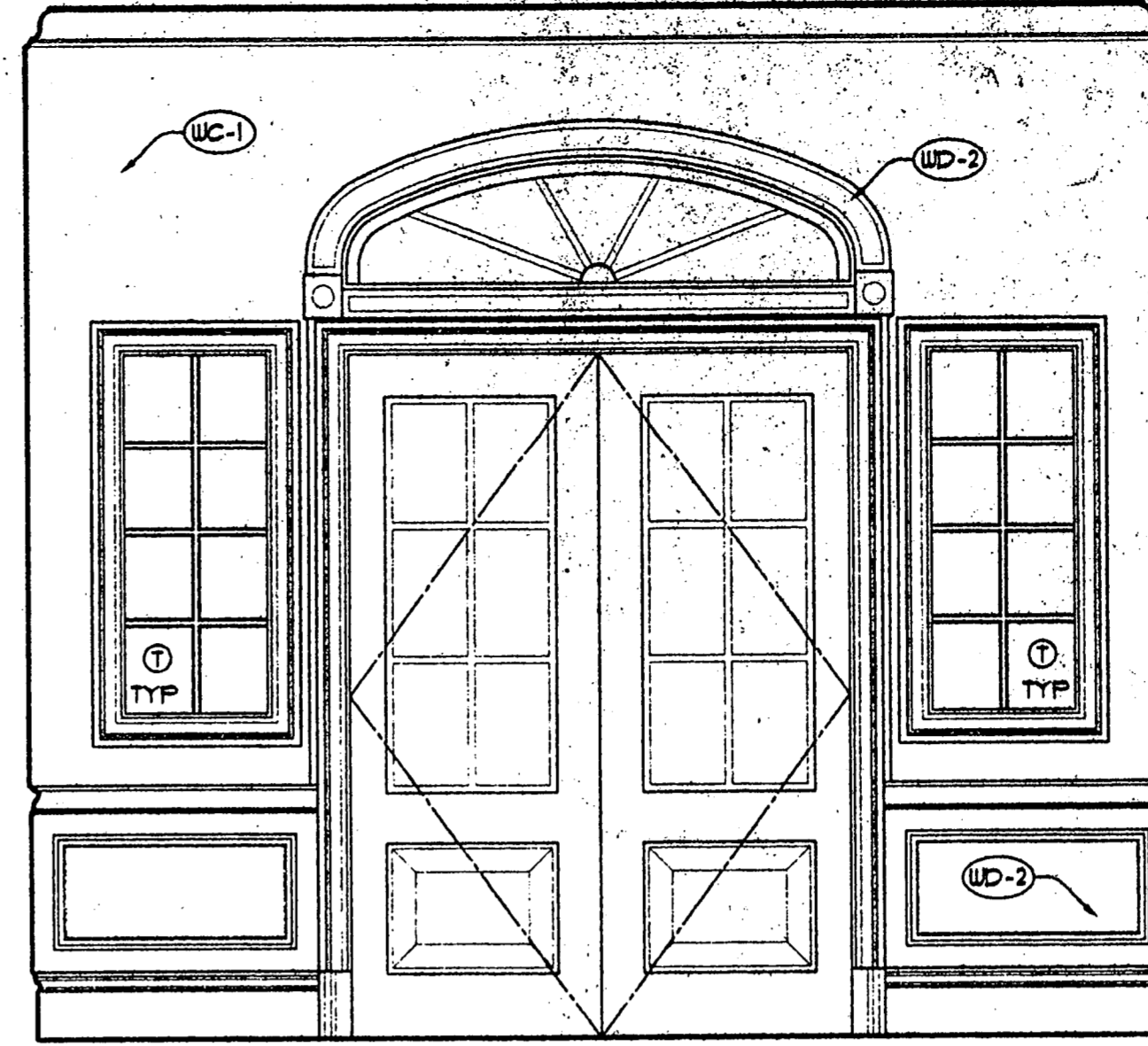


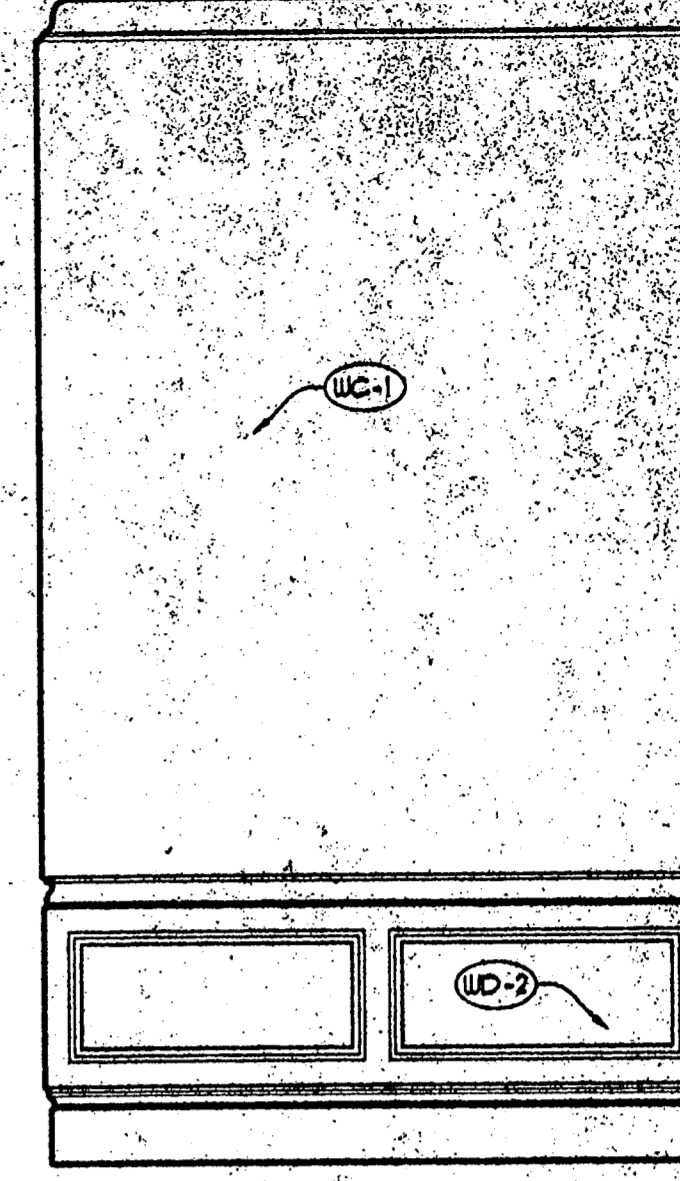
1 WAITING 104  
A5.06 SCALE: 1/2" = 1'-0"



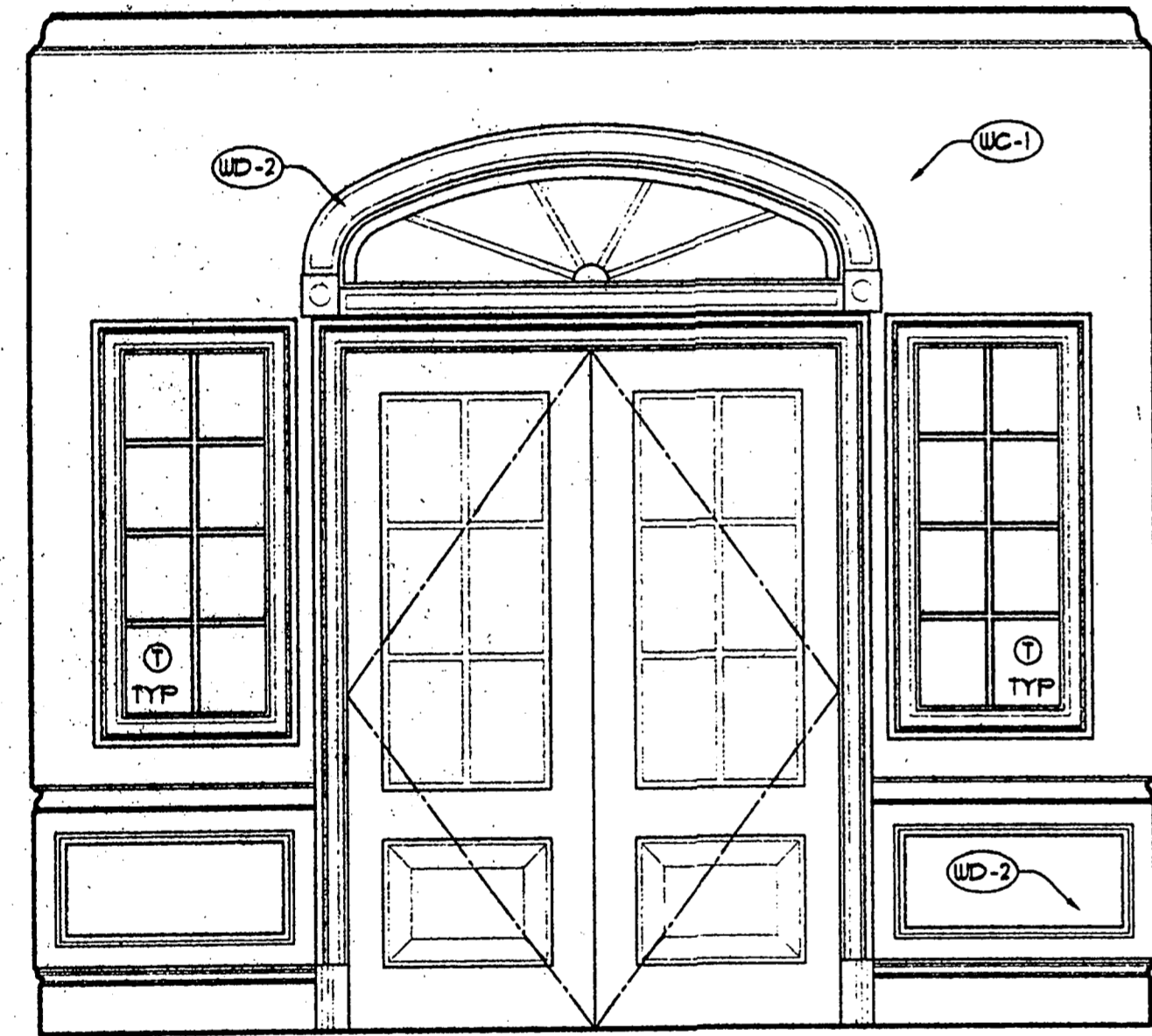
2 VESTIBULE 101  
A5.06 SCALE: 1/2" = 1'-0"



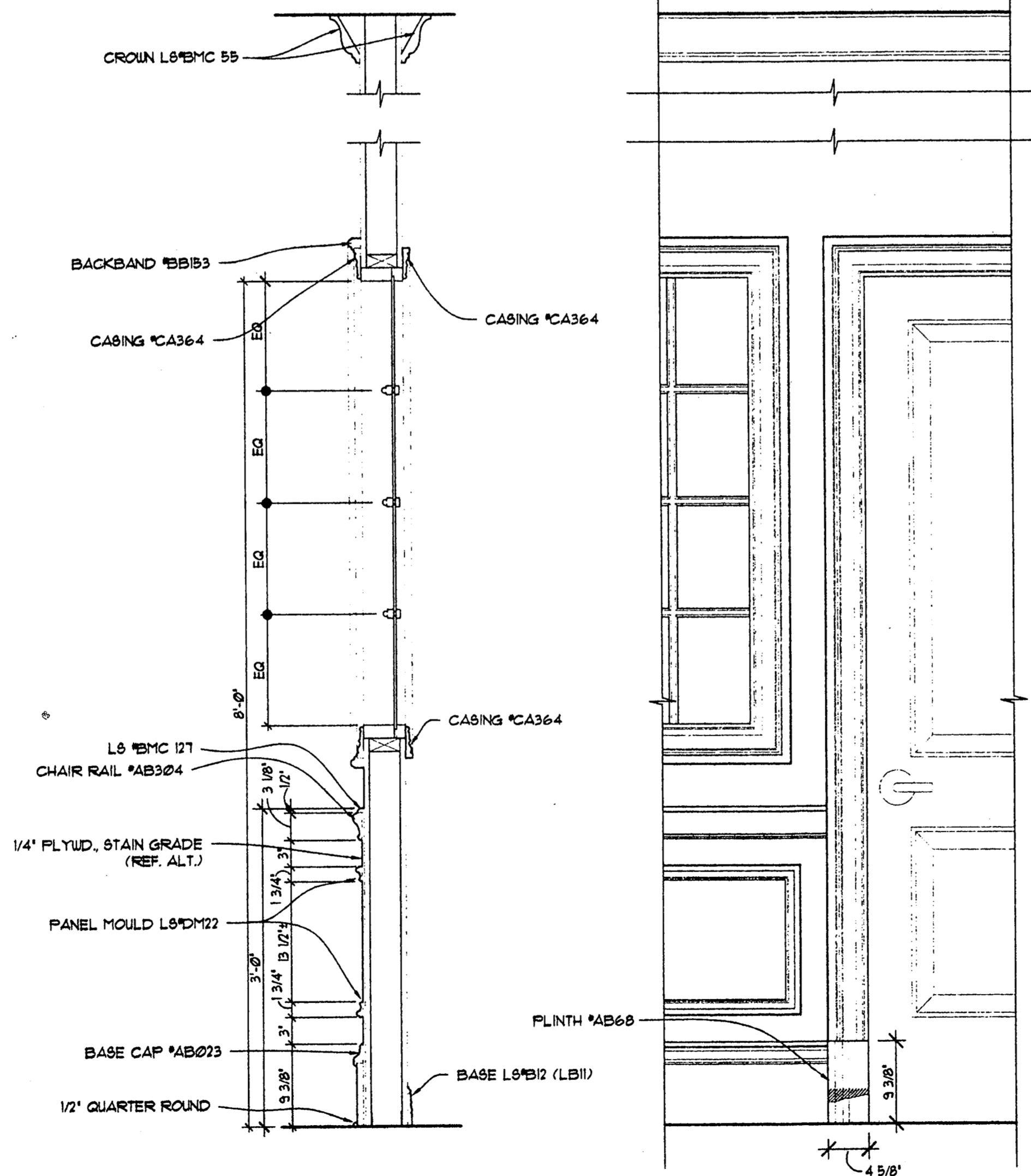
3 VESTIBULE 101  
A5.06 SCALE: 1/2" = 1'-0"



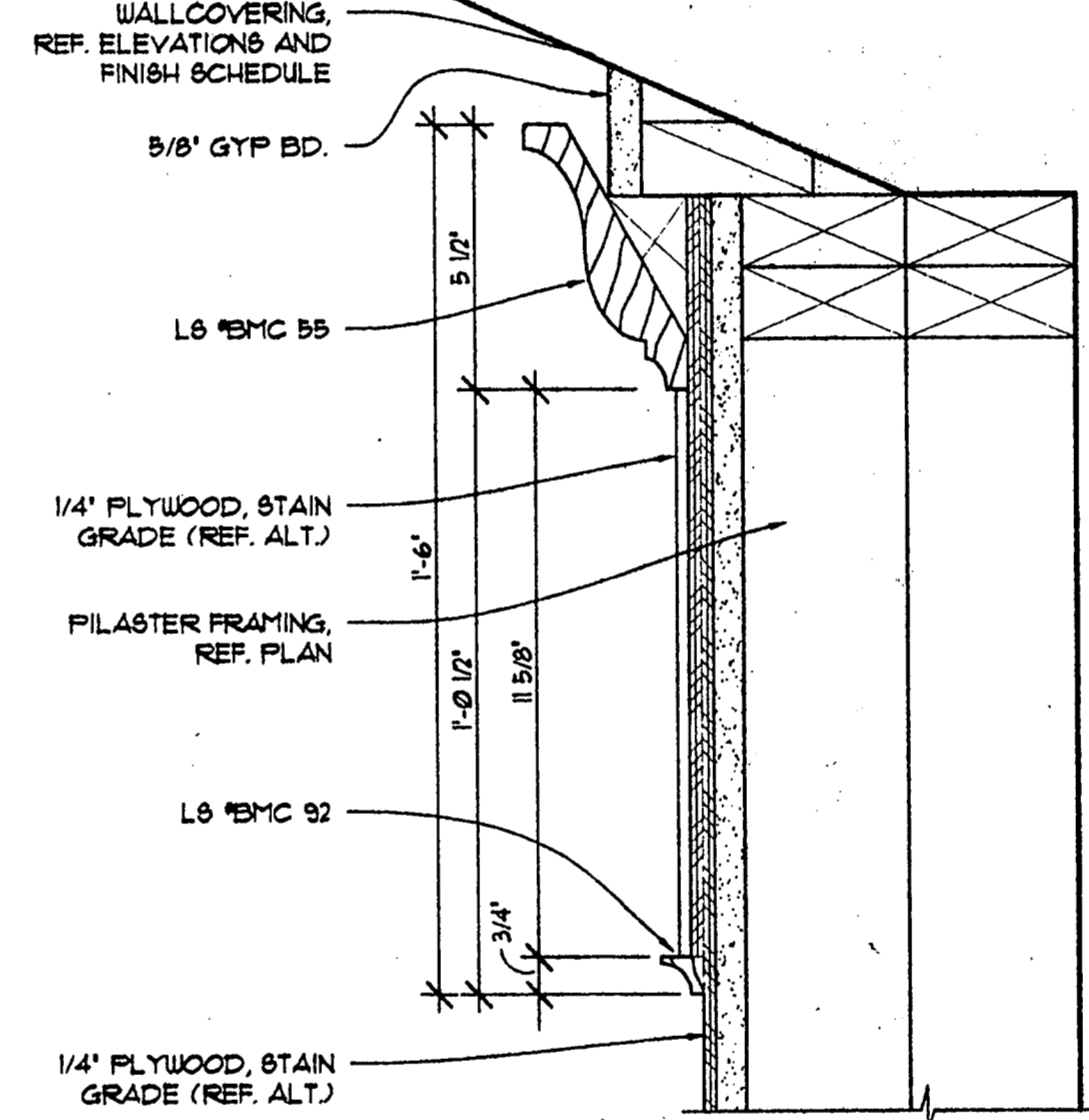
4 WAITING 103  
A5.06 SCALE: 1/2" = 1'-0"



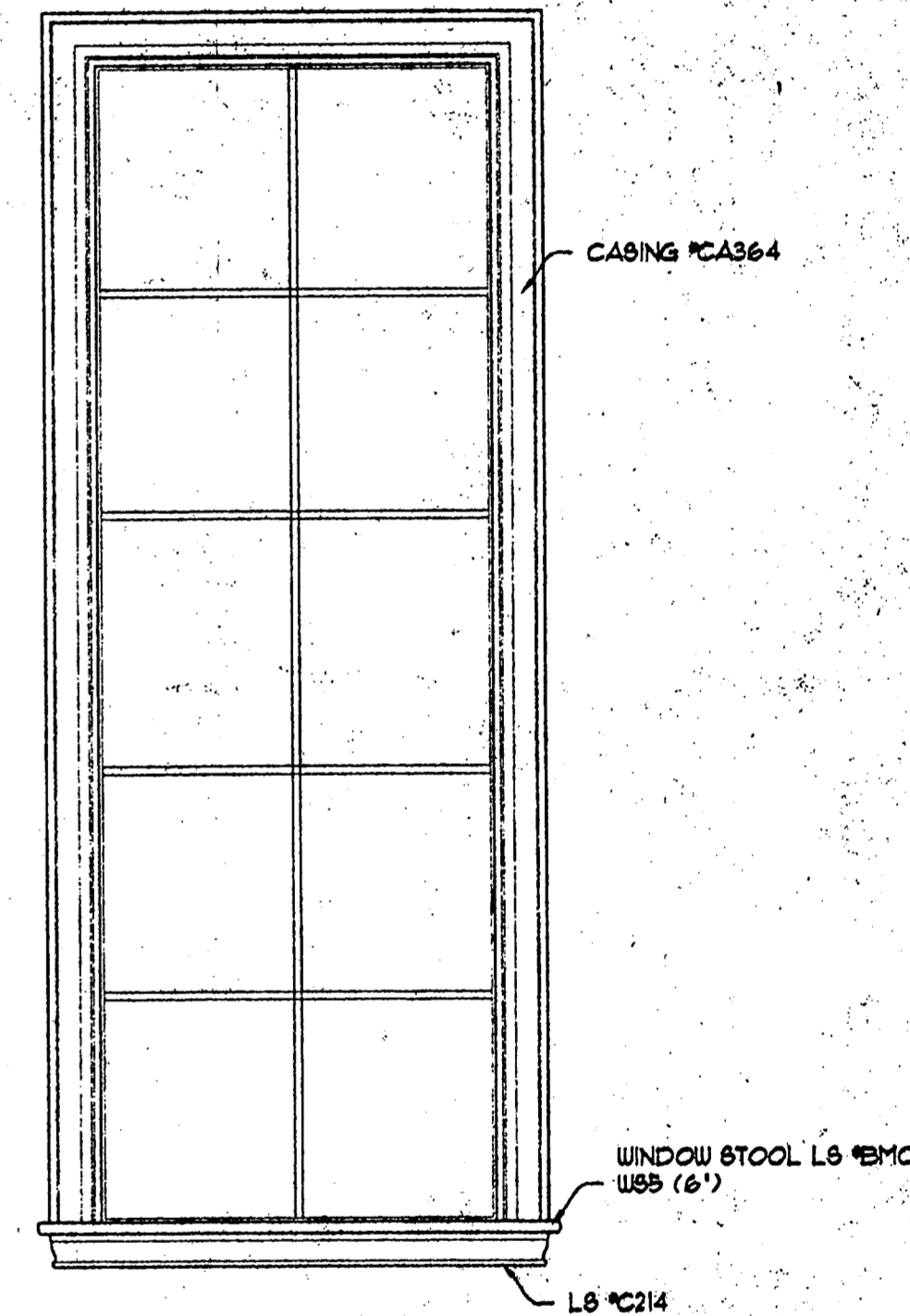
5 VESTIBULE 101  
A5.06 SCALE: 1/2" = 1'-0"



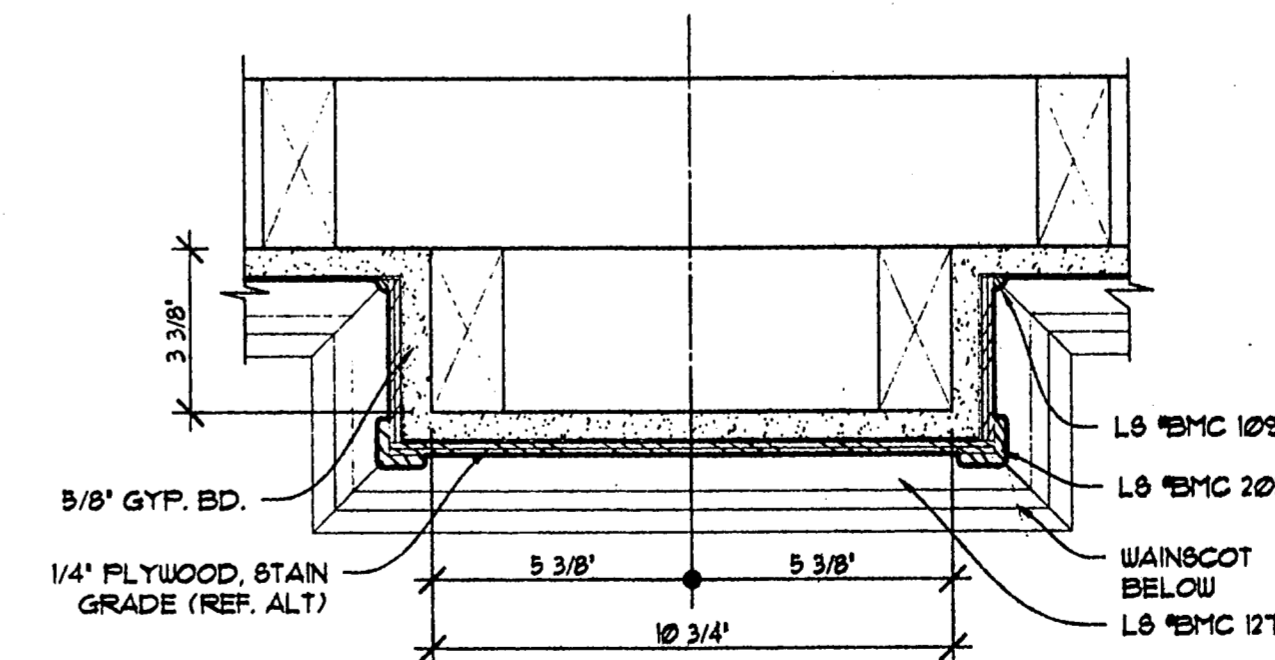
6 WAINSCOT DETAIL  
A5.06 SCALE: 1" = 1'-0"



7 PILASTER DETAIL  
A5.06 SCALE: 3" = 1'-0"



8 TYPICAL-TRIM @ INSIDE OF EXT. WINDOWS  
A5.06 SCALE: 1/2" = 1'-0"



9 PILASTER DETAIL  
A5.06 SCALE: 3" = 1'-0"

Copyright 2008, ROGERS-FORD, L.P. Drawing: F:\1804\1804-1804-1804-1804.dwg at Aug. 18, 2008-11:38am by dbr



**R-F**  
ROGERS - FORD  
ARCHITECTURE - INTERIOR DESIGN  
2616 THOMAS AVENUE  
DALLAS, TEXAS 75204  
TELEPHONE (214) 871-9388  
FAX (214) 871-3155

LONG STAR BANK  
Beltwood Parkway East  
at Beltline Road  
Addison, TX  
Project # 1804

7-25-00 ISSUED FOR PERMIT  
8-17-00 ISSUE FOR BID

A5.06