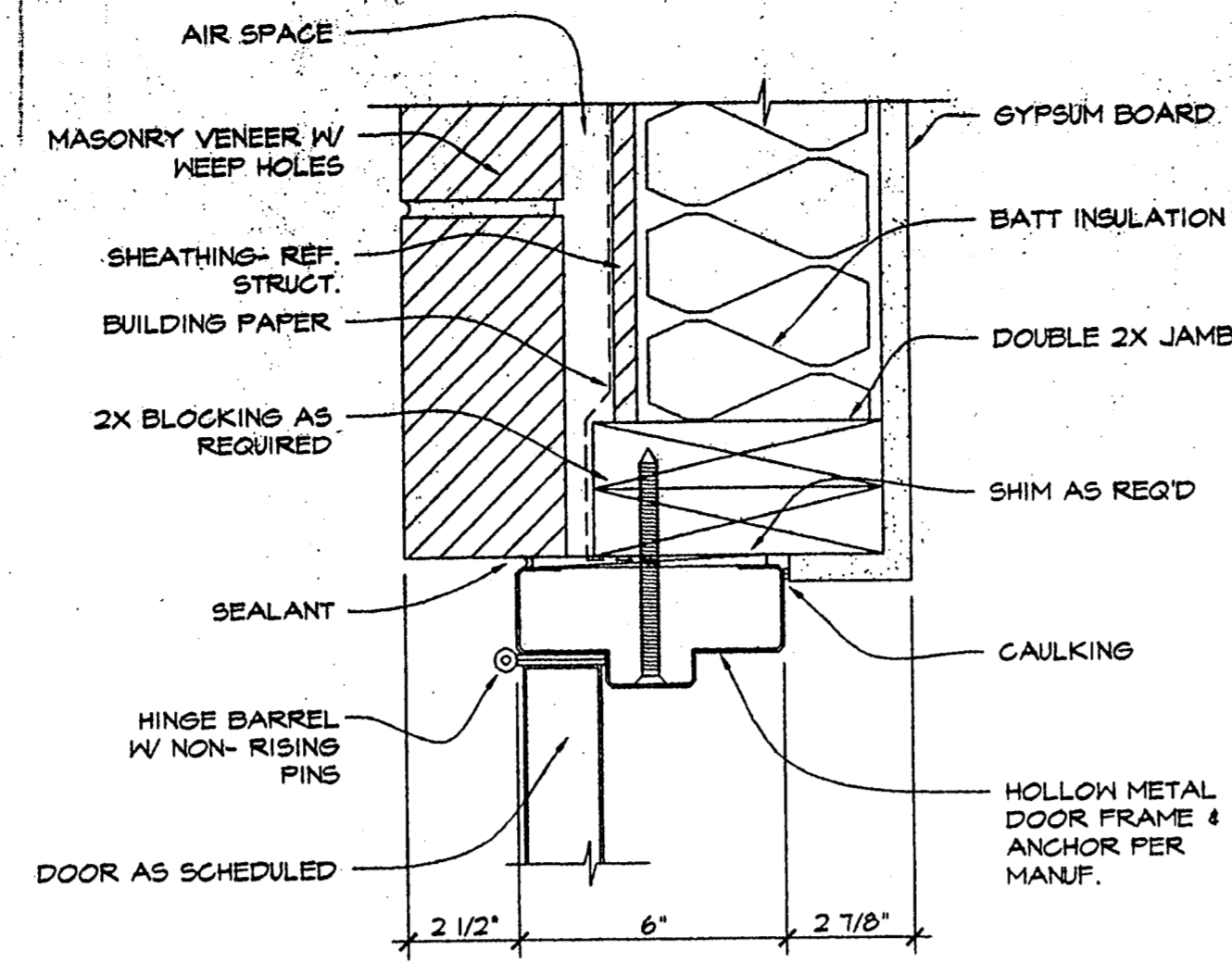
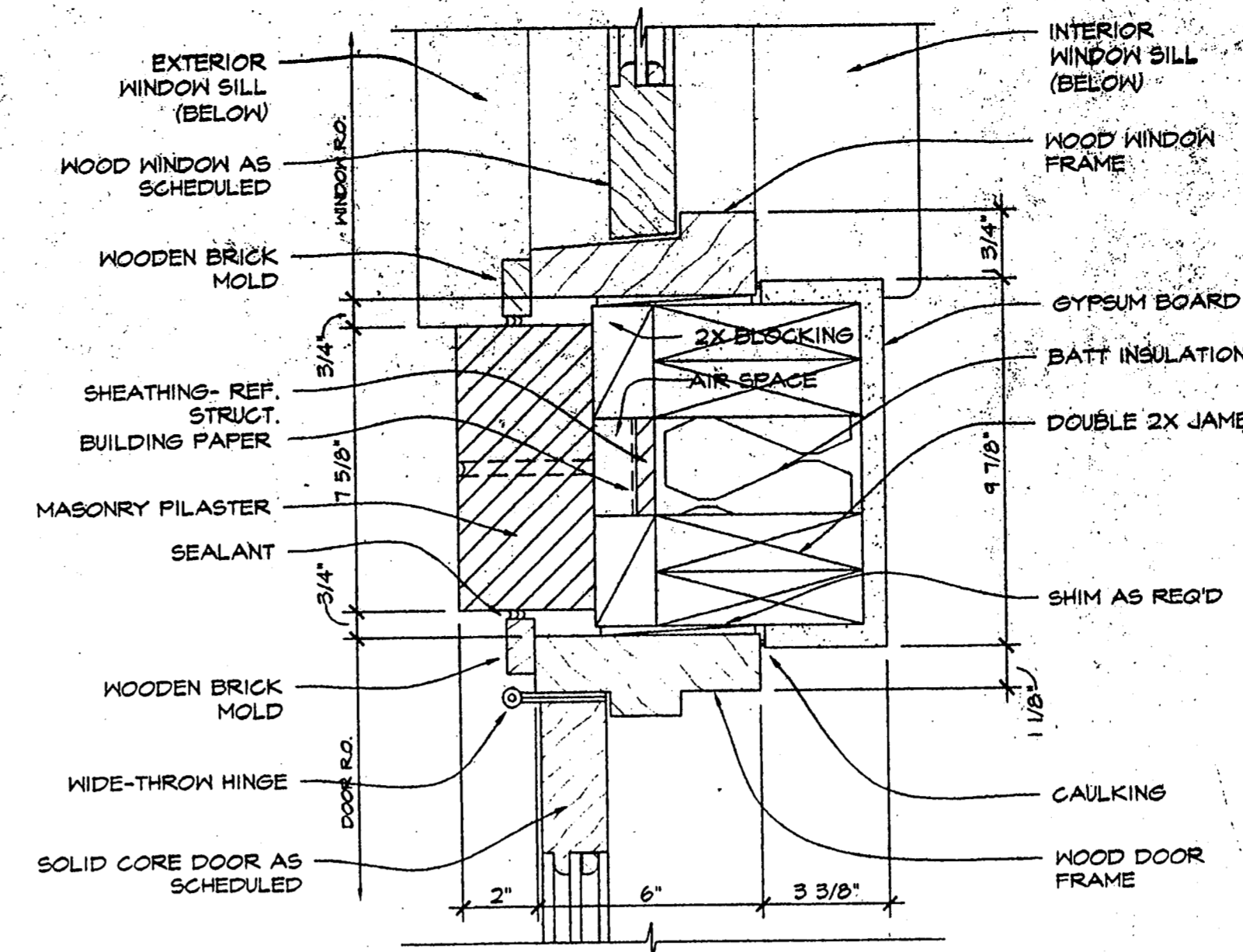


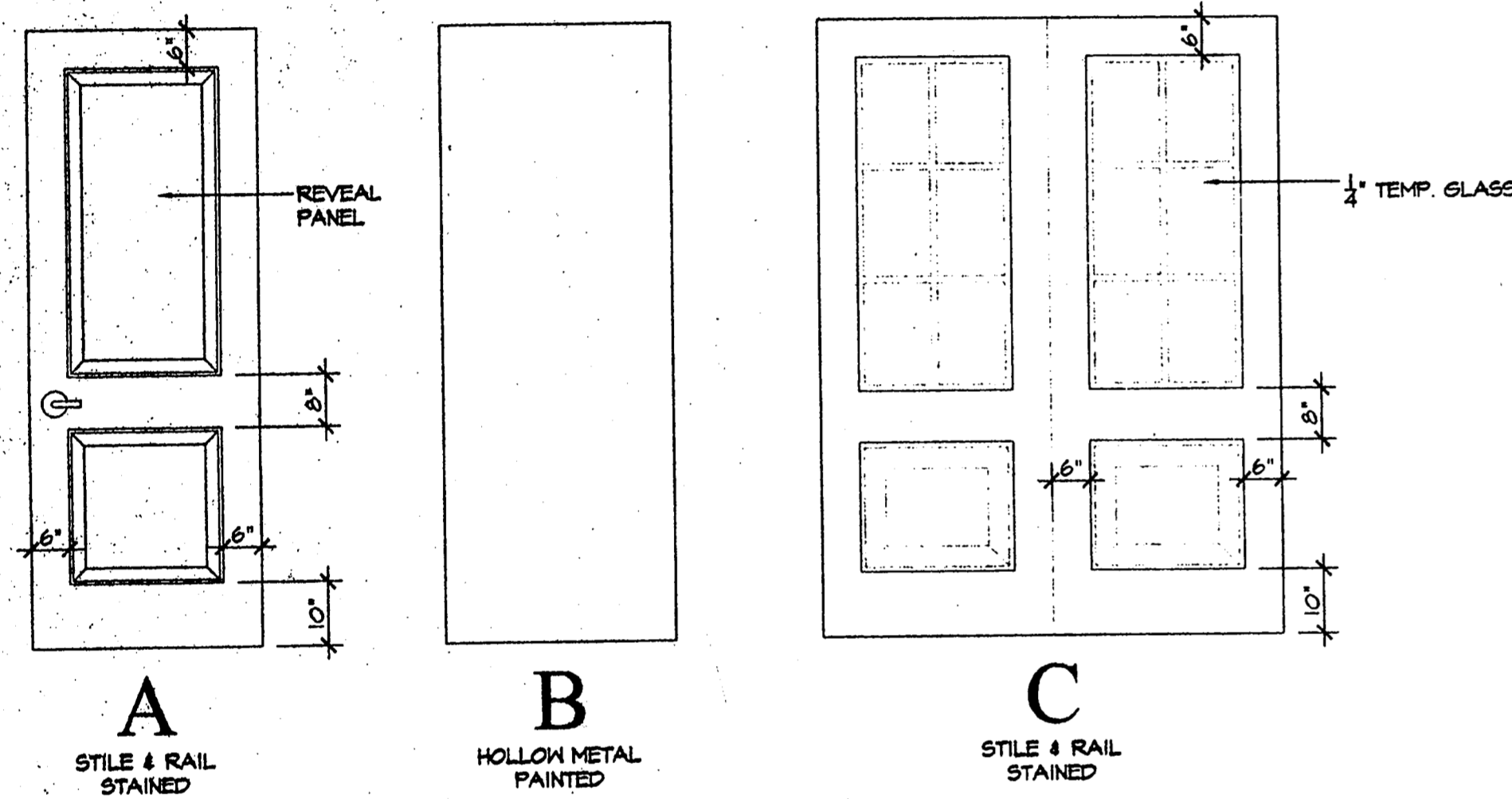
1 HEAD DETAIL
SCALE: 3" = 1'-0"



2 JAMB DETAIL
SCALE: 3" = 1'-0"



3 JAMB DETAIL
SCALE: 3" = 1'-0"



4 DOOR TYPES
SCALE: 1/2" = 1'-0"

MARK	DOOR				FRAME			FIRE RATING	REMARKS	
	TYPE	MATL.	WIDTH	HEIGHT	THICK.	HARDWARE	HEAD			JAMB
001	C	WOOD	6'-0"	8'-0"	1-3/4"	WOOD HS-7	-	3/A1.00	-	-
002	C	WOOD	6'-0"	8'-0"	1-3/4"	WOOD HS-8	-	3/A1.00	-	-
003	A	WOOD	3'-0"	8'-0"	1-3/4"	WOOD HS-3	-	-	-	COAT HOOK @ 60" A.F.F.
004	A	WOOD	3'-0"	8'-0"	1-3/4"	WOOD HS-3	-	-	-	COAT HOOK @ 60" A.F.F.
005	A	WOOD	3'-0"	8'-0"	1-3/4"	WOOD HS-3	-	-	-	COAT HOOK @ 60" A.F.F.
006	A	WOOD	3'-0"	8'-0"	1-3/4"	WOOD HS-3	-	-	-	COAT HOOK @ 60" A.F.F.
007	A	WOOD	3'-0"	8'-0"	1-3/4"	WOOD HS-4	-	-	-	-
008	A	WOOD	3'-0"	8'-0"	1-3/4"	WOOD HS-4	-	-	-	-
009	A	WOOD	3'-0"	8'-0"	1-3/4"	WOOD HS-6	-	-	-	-
010	A	WOOD	3'-0"	8'-0"	1-3/4"	WOOD HS-6	-	-	-	-
011	A	WOOD	3'-0"	8'-0"	1-3/4"	WOOD HS-10	-	-	-	-
012	A	WOOD	3'-0"	8'-0"	1-3/4"	WOOD HS-9	-	-	-	-
013	A	WOOD	3'-0"	8'-0"	1-3/4"	WOOD HS-4	-	-	-	H.C. SIGN 'WOMENS' @ WALL - REF. ELEV.
014	A	WOOD	3'-0"	8'-0"	1-3/4"	WOOD HS-4	-	-	-	H.C. SIGN 'MENS' @ WALL - REF. ELEV.
015	B	H. MTL	3'-0"	8'-0"	1-3/4"	H. MTL HS-1	1/A1.00	2/A1.00	-	-
016	B	H. MTL	3'-0"	8'-0"	1-3/4"	H. MTL HS-2	1/A1.00	2/A1.00	-	-
-	-	-	-	-	-	-	-	-	-	-
-	-	-	-	-	-	-	-	-	-	-
-	-	-	-	-	-	-	-	-	-	-

- | | | | |
|--|---|---|---|
| <p>HS-1</p> <ul style="list-style-type: none"> 4 BUTT HINGES 1 OVERHEAD EXPOSED CLOSER 1 LOCKSET- ENTRY FUNCTION 1 DOOR VIEWER 1 DOOR STOP 1 SET WEATHERSTRIPPING 1 THRESHOLD 1 RAIN DRIP | <p>HS-2</p> <ul style="list-style-type: none"> 4 BUTT HINGES 1 OVERHEAD EXPOSED CLOSER 1 LOCKSET- STOREROOM FUNCTION 1 DOOR STOP 1 SET WEATHERSTRIPPING 1 THRESHOLD 1 RAIN DRIP | <p>HS-3</p> <ul style="list-style-type: none"> 4 BUTT HINGES 1 LOCKSET- OFFICE FUNCTION 1 MALL STOP 1 COAT HOOK | <p>HS-4</p> <ul style="list-style-type: none"> 4 BUTT HINGES 1 OVERHEAD EXPOSED CLOSER 1 PUSH PLATE 1 FULL PLATE 1 KICK PLATE 1 DOOR STOP 1 SET- A.D.A. & GENDER SIGNAGE ('MENS' OR 'WOMENS') |
| <p>HS-5</p> <ul style="list-style-type: none"> 4 BUTT HINGES 1 OVERHEAD EXPOSED CLOSER 1 LOCKSET- ENTRY FUNCTION 1 DOOR STOP | <p>HS-6</p> <ul style="list-style-type: none"> 4 BUTT HINGES 1 OVERHEAD EXPOSED CLOSERS 1 LOCKSET- STOREROOM FUNCTION 1 DOOR STOP | <p>HS-7</p> <ul style="list-style-type: none"> 2 BUTT HINGES 2 OVERHEAD EXPOSED CLOSERS 1 DEADLOCK 1 SET - FLUSH BOLTS 1 THRESHOLD 2 DOOR STOPS 2 SETS- WEATHERSTRIPPING 2 SETS- PUSH/PULL 1 KNOX BOX | <p>HS-8</p> <ul style="list-style-type: none"> 2 BUTT HINGES 2 OVERHEAD EXPOSED CLOSERS 2 THRESHOLD 2 DOOR STOPS 2 SETS- WEATHERSTRIPPING 2 SETS- PUSH/PULL |

GENERAL NOTES:

ACCEPTABLE MANUFACTURERS- LOCKSETS, LATCHSETS, & CYLINDERS:

1. CORBIN/RUSSWIN
2. SARGENT MANUFACTURING CO.
3. SCHLAGE LOCK CO.
4. YALE SECURITY

Copyright © 2000 by Rogers, Ford, L.P. All rights reserved. Printed at Aug 17, 2000 4:52pm by Craig

	<p>R-F ROGERS - FORD ARCHITECTURE - INTERIOR DESIGN 2616 THOMAS AVENUE DALLAS, TEXAS 75204 TELEPHONE (214) 711-9188 FAX (214) 871-3155</p>	<p>LONE STAR BANK 4650 BELTLINE ROAD at Beltwood Parkway East ADDISON, TX</p>	<p>7-25-2000 PERMIT ISSUE 8-17-2000 ISSUE FOR BID</p>	<p>A7.01</p>
	<p>SCHEDULES & DETAILS</p>			