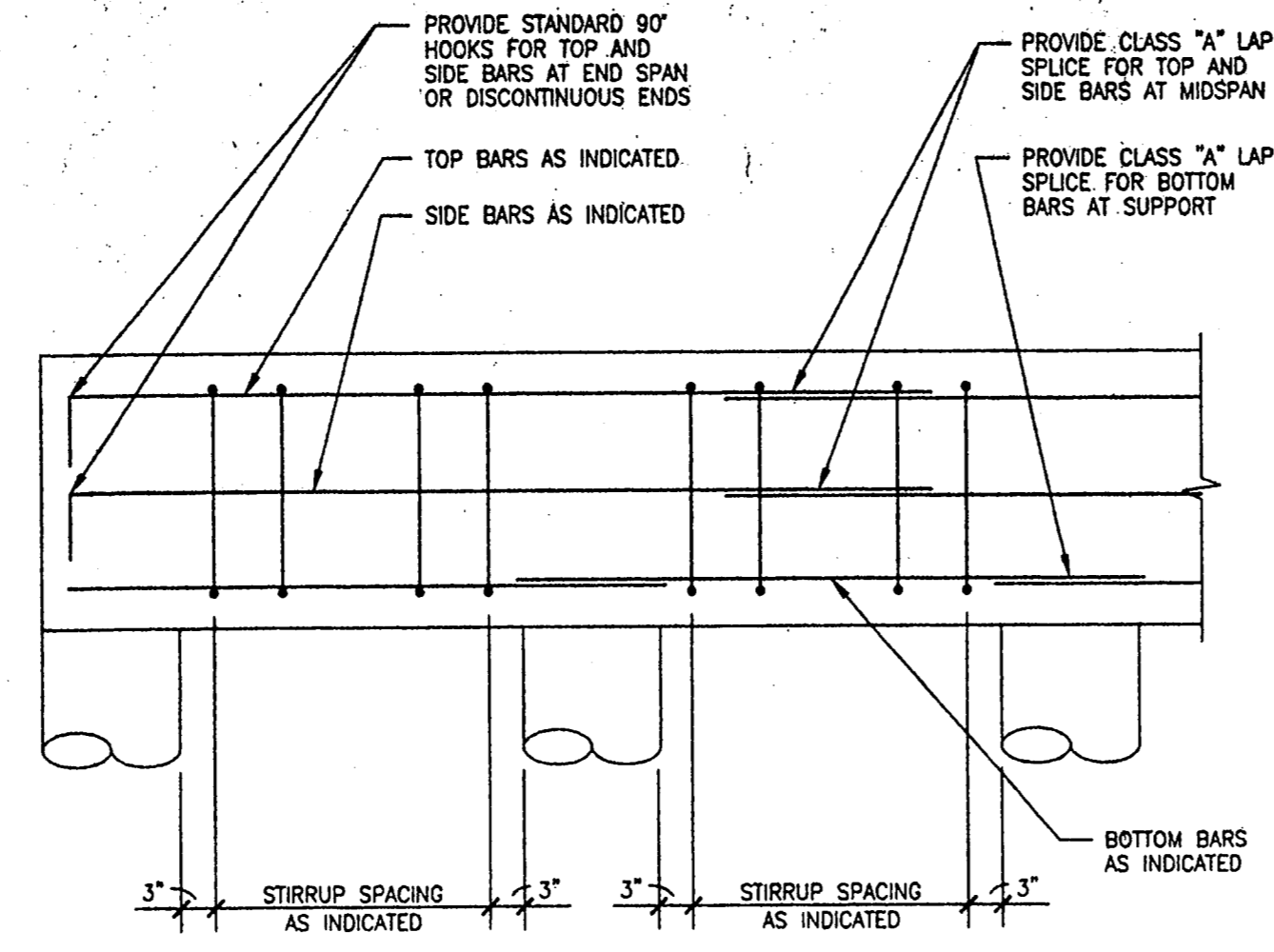
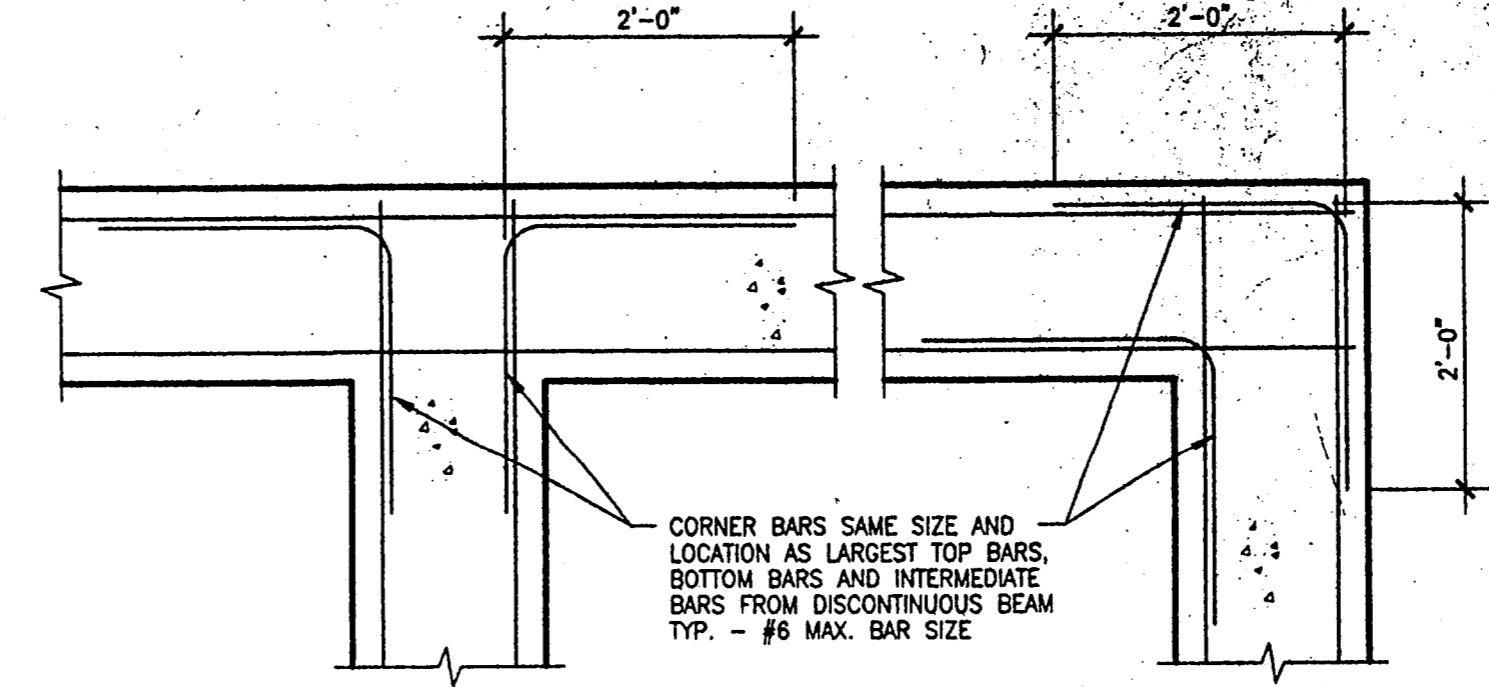


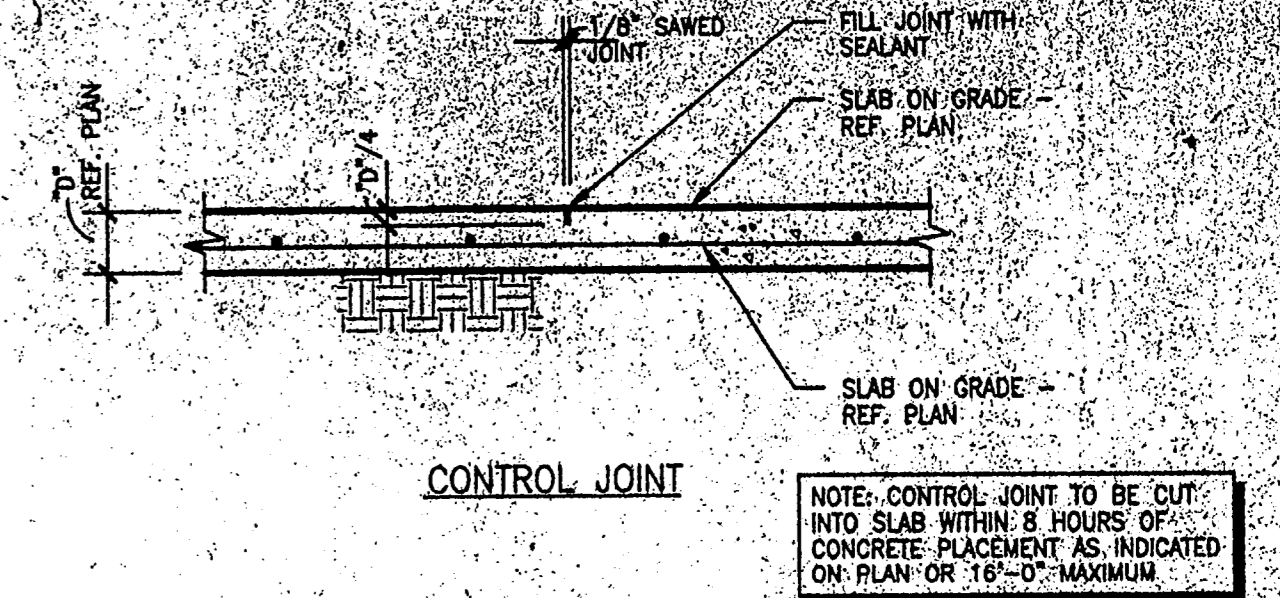
1 TYPICAL DRILLED PIER DETAIL  
S3.01 NO SCALE



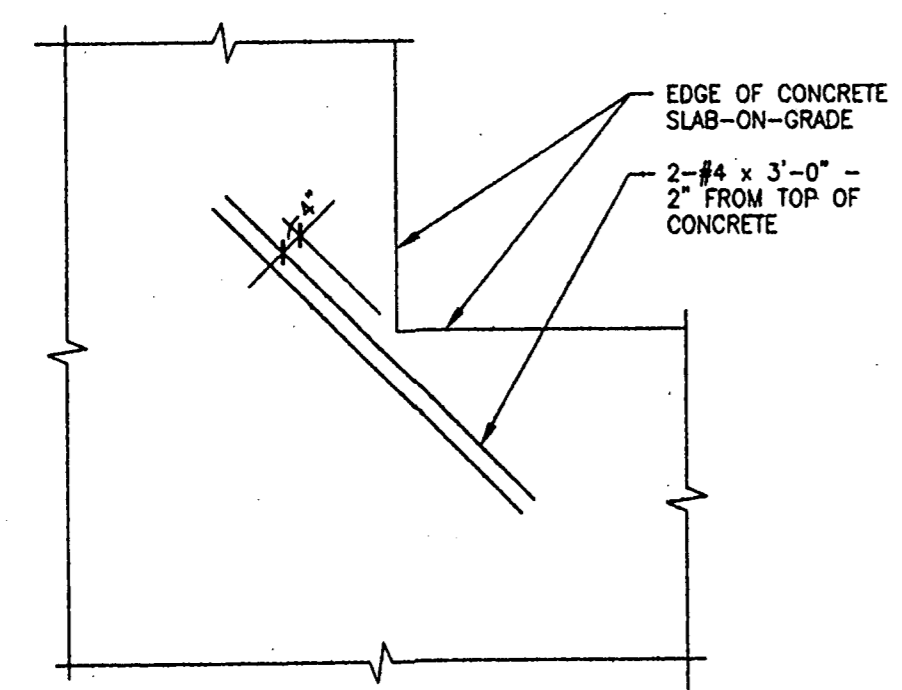
2 TYPICAL UNSCHEDULED CONCRETE BEAM REINFORCEMENT DETAIL  
S3.02 NO SCALE



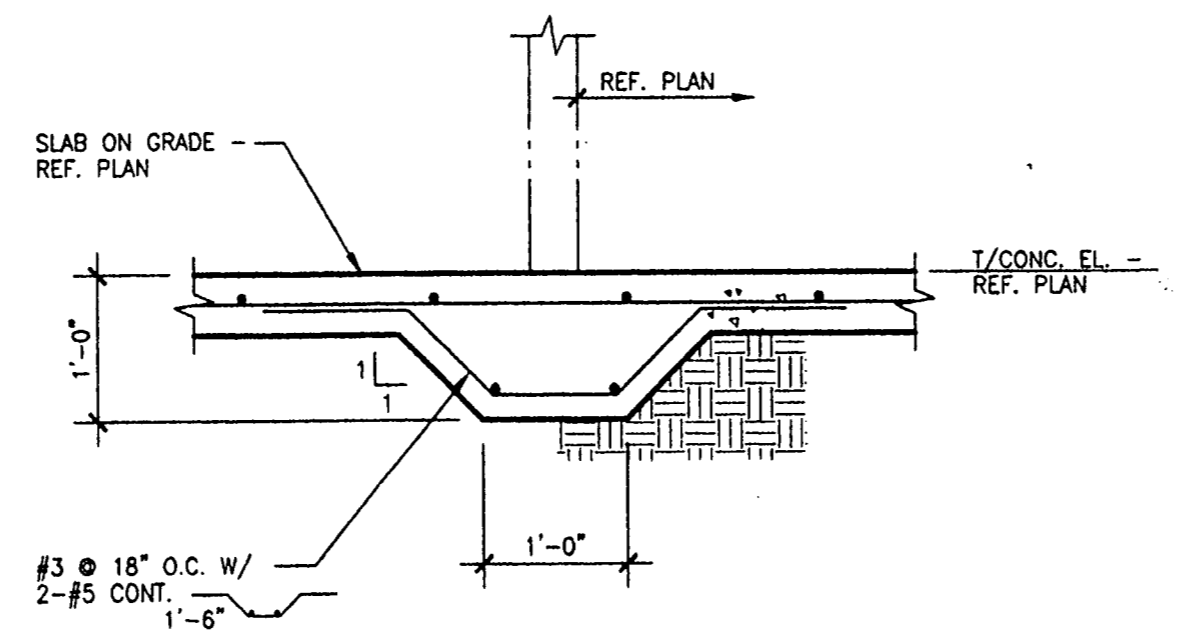
3 TYPICAL CORNER BARS AT WALL, BEAM AND FOOTING INTERSECTION DETAIL  
S3.03 NO SCALE



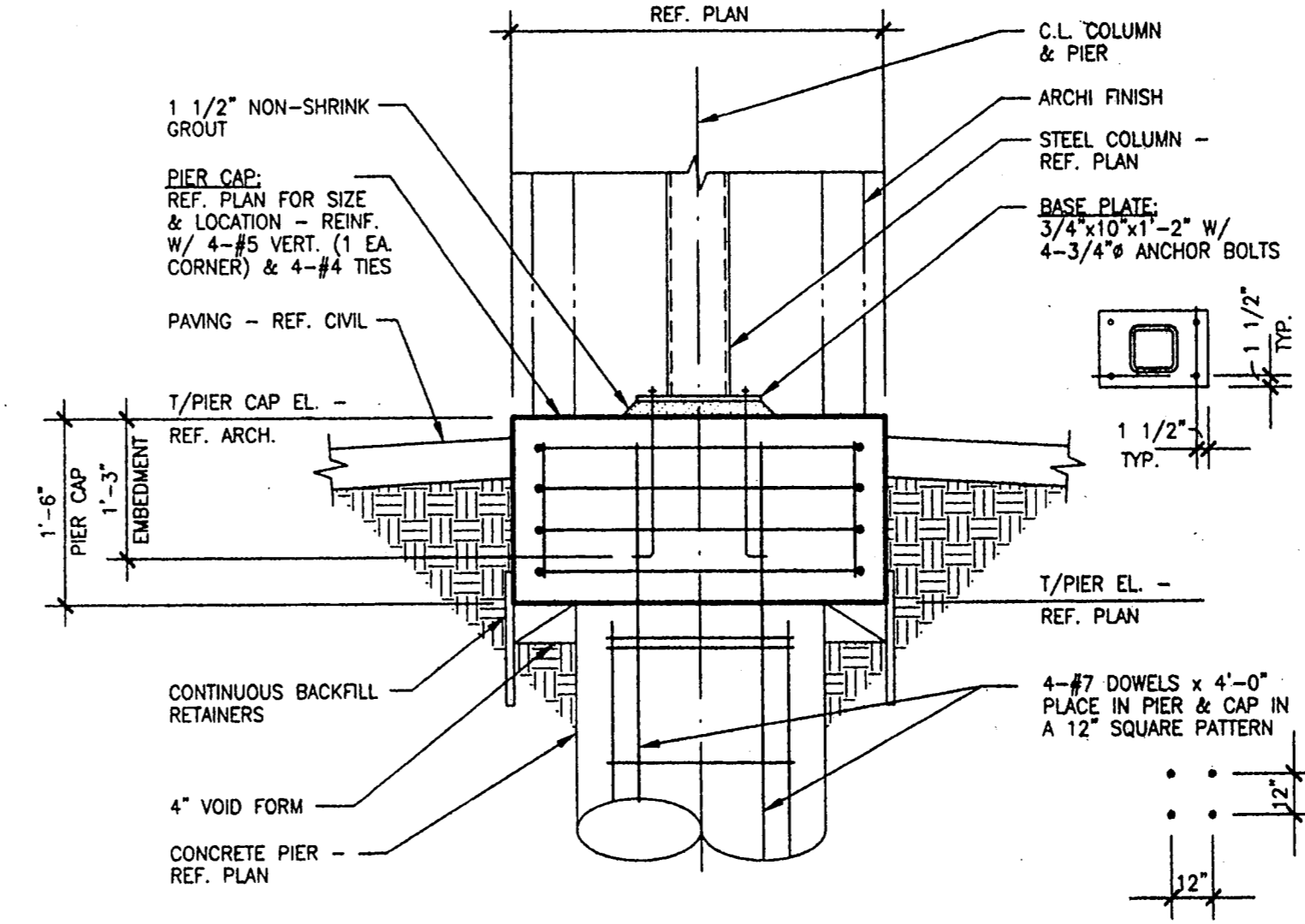
4 TYPICAL JOINTS IN SLAB-ON-GRADE DETAIL  
S3.04 NO SCALE



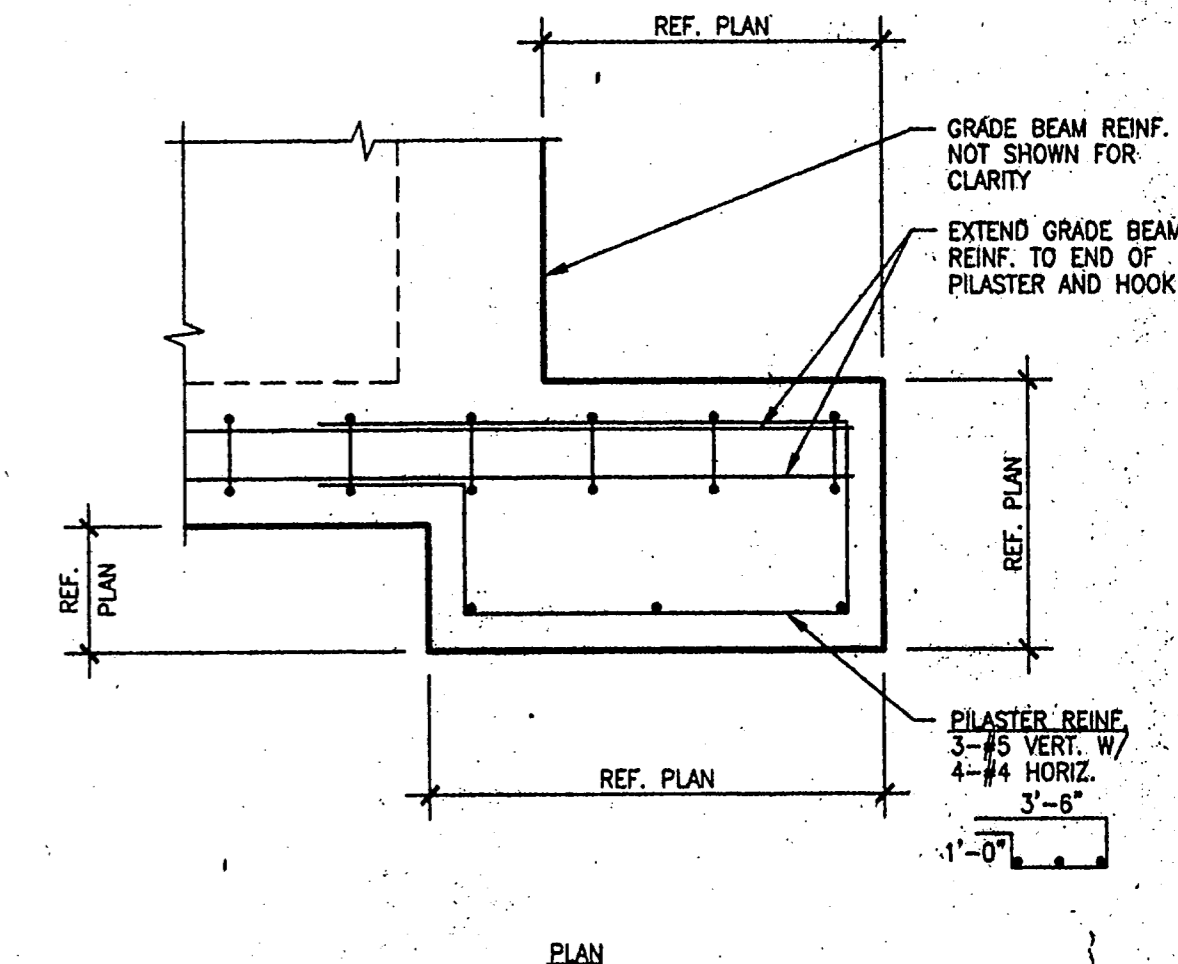
5 TYPICAL RE-ENTRANT SLAB CORNER REINFORCING DETAIL  
S3.05 NO SCALE



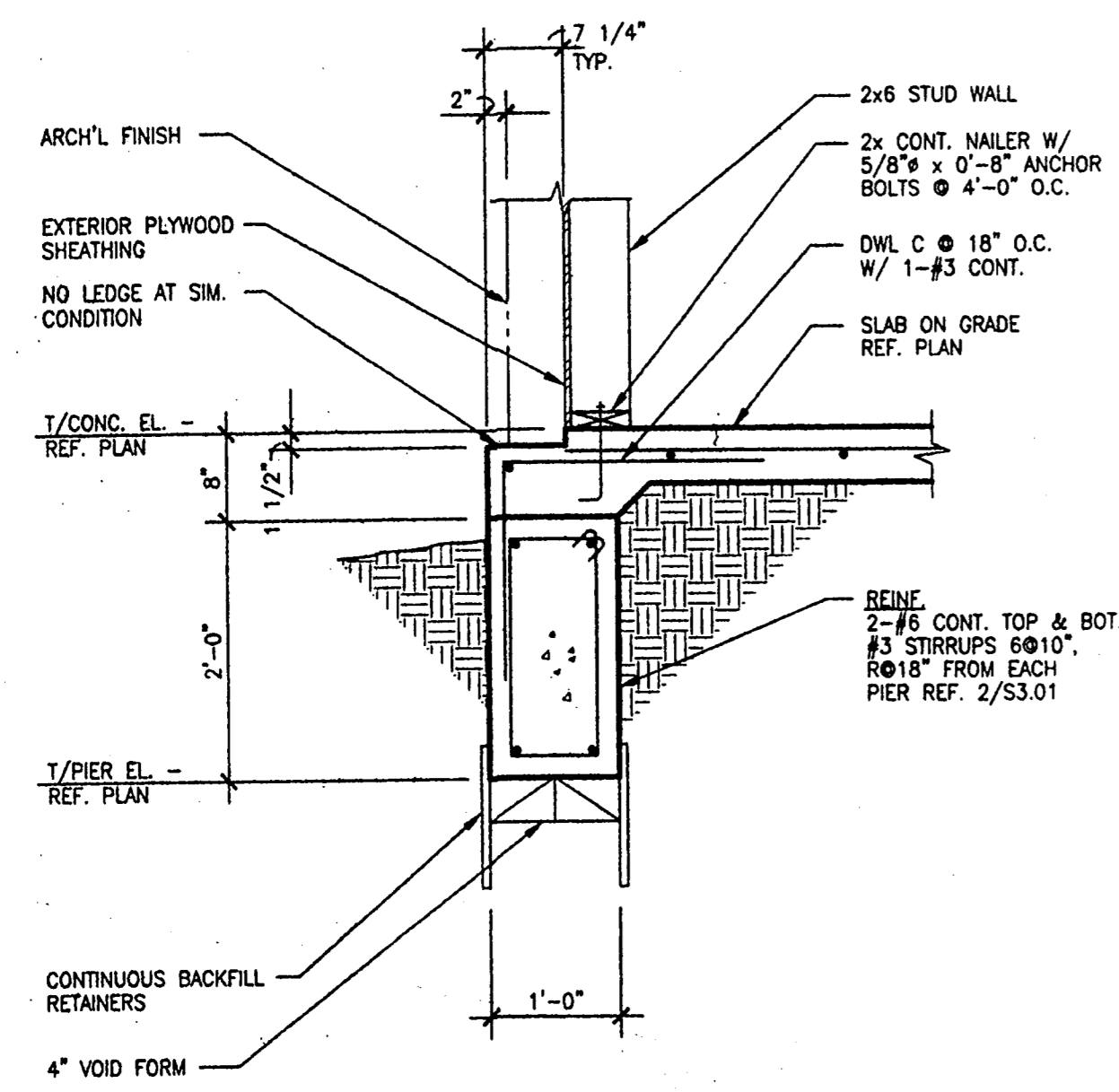
6 SECTION  
S3.06 NO SCALE



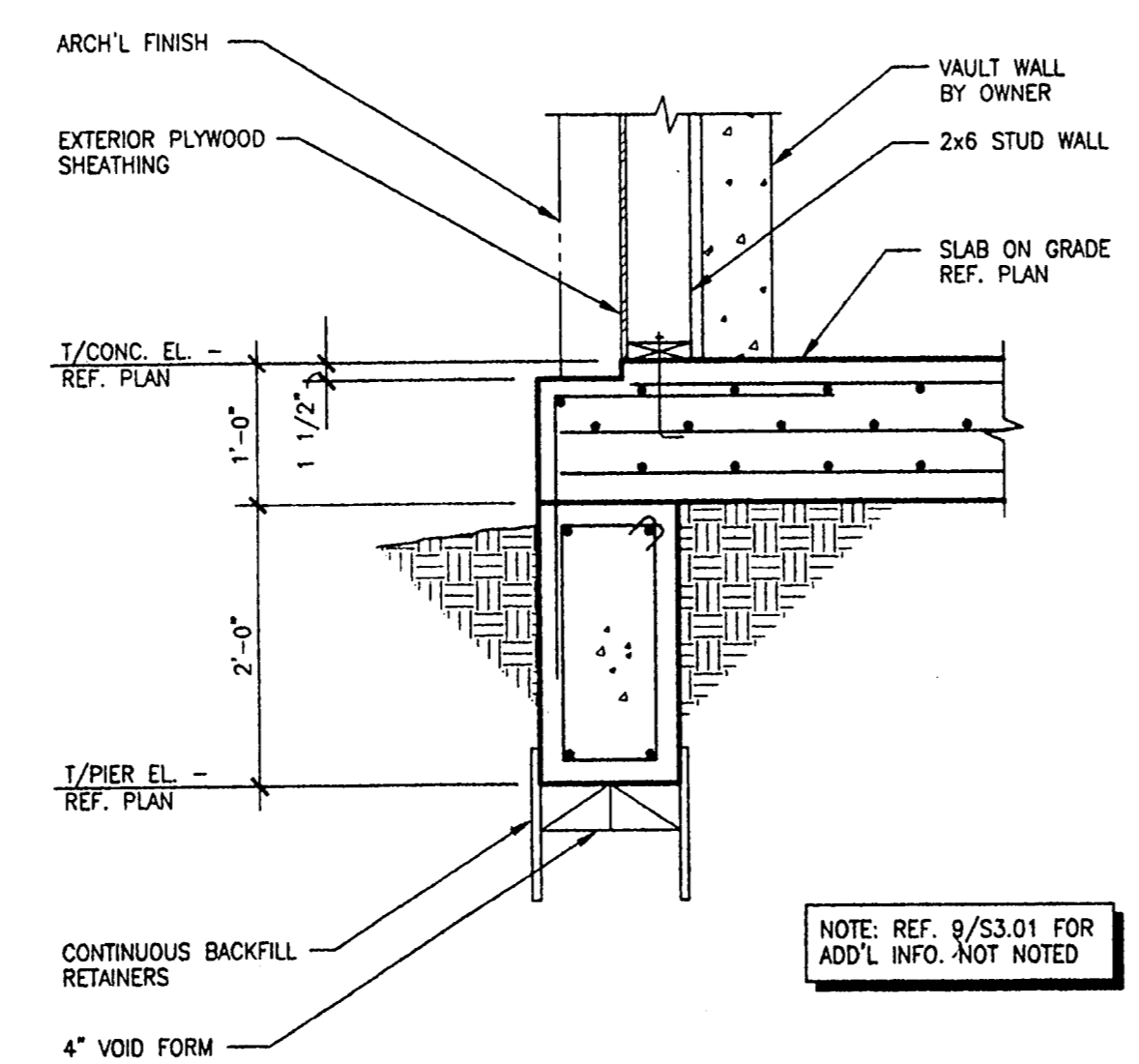
7 DETAIL  
S3.07 NO SCALE



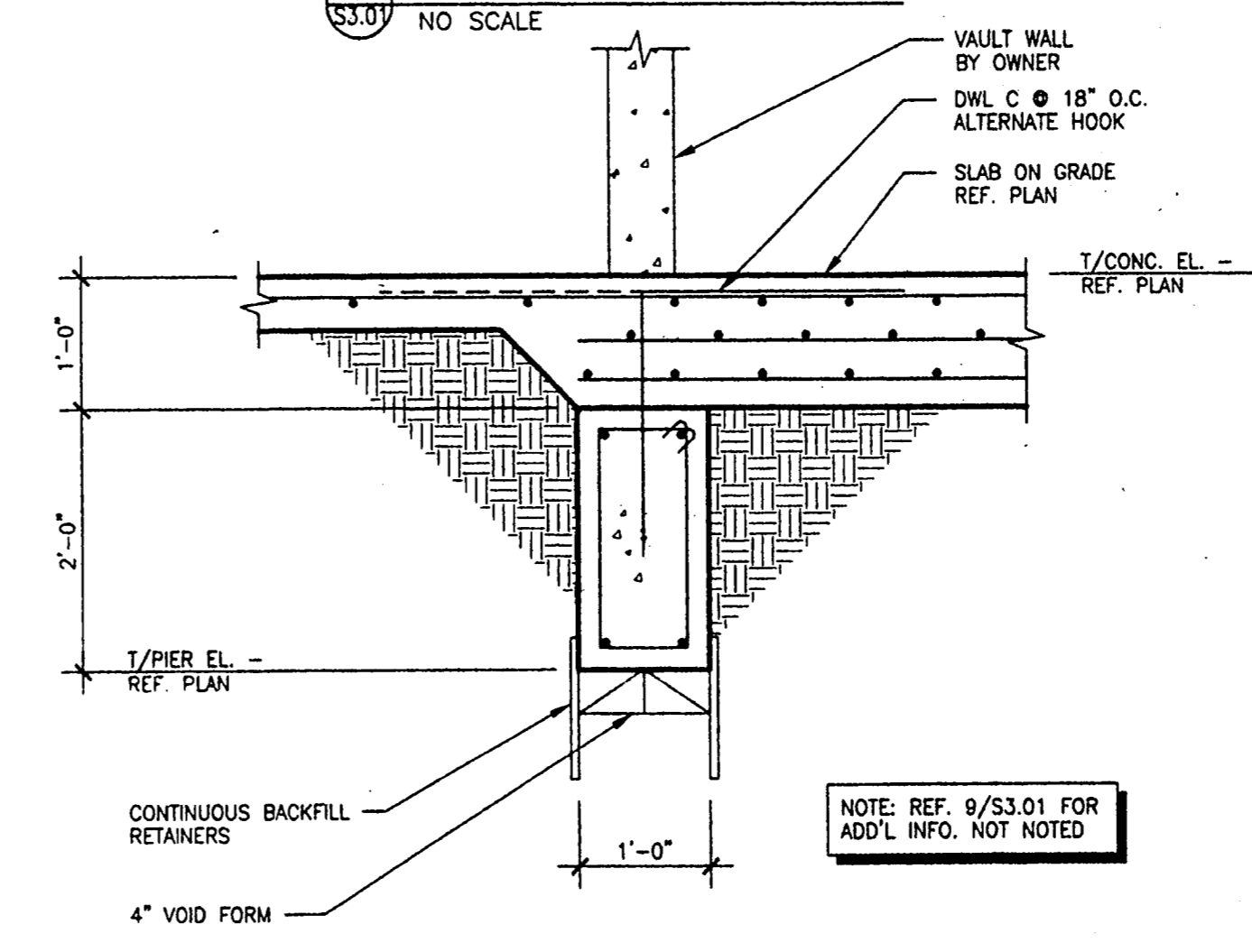
8 DETAIL  
S3.08 NO SCALE



9 SECTION  
S3.09 NO SCALE

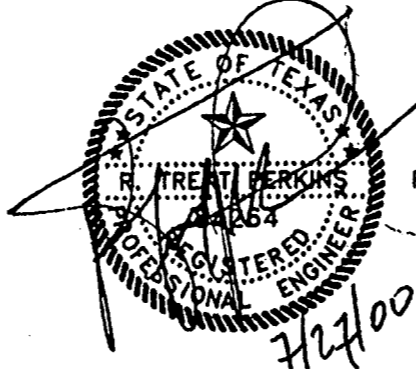


10 SECTION  
S3.10 NO SCALE



11 SECTION  
S3.11 NO SCALE

FILE INFO: 80188301.dwg, 1=16 07/27/00 08:51.



THE SEAL APPEARING ON THIS DOCUMENT WAS AUTHORIZED BY R. TRENT PERKINS, P.E. 84264 ON 27 JULY 00

THIS DOCUMENT IS THE RENDERING OF A PROFESSIONAL SERVICE, THE ESSENCE OF WHICH IS THE PROVIDING OF ADVICE, JUDGEMENT, OPINION, OR SIMILAR PROFESSIONAL SKILL.

**P P O**  
Parkin • Perkins • Olsen  
Consulting Engineering, Inc.  
12970 Pandora Drive Suite 200  
Dallas, Texas 75238  
Tel 214.221.2220 - Fax 214.221.2252  
Project No. 38018

**R-F**  
ROGERS - FORD  
ARCHITECTURE - INTERIOR DESIGN  
2616 THOMAS AVENUE  
DALLAS, TEXAS 75204  
TELEPHONE (214) 871-9388  
FAX (214) 871-3152

LONE STAR BANK  
4650 Beltline Road  
Addicks, TX  
Project # 1804

7-27-2000 PERMIT ISSUE  
2-17-2001 1:56 PM R.F. E.M.D.

S3.01

FOUNDATION DETAILS