

ALL PIPING, VALVES, FITTINGS, ETC. SHALL BE UL LISTED FOR FIRE SPRINKLER SYSTEM APPLICATIONS, BE IN COMPLIANCE WITH NFPA 13, AND BE INSTALLED IN ACCORDANCE TO NFPA 13, THE AUTHORITY HAVING JURISDICTION AND CITY OF ADDISON.

FIRE SPRINKLER RISER DETAIL
TO SCALE

GENERAL NOTES

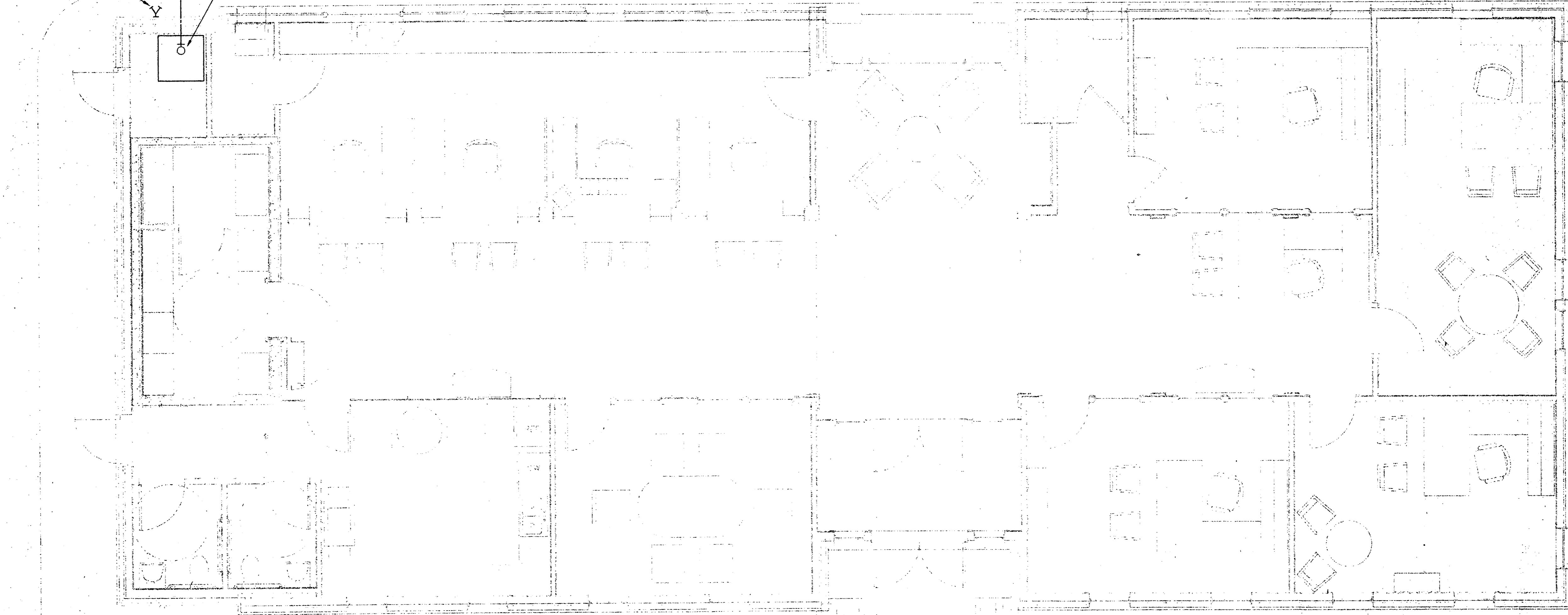
- A. DESIGN AND INSTALL NEW FIRE SPRINKLER SYSTEM IN ACCORDANCE TO THE LATEST ADDITION OF NFPA 13 AND AUTHORITY HAVING JURISDICTION.
- B. ALL FIRE SPRINKLER HEADS SHALL BE QUICK RESPONSE, CONCEALED TYPE, WITH HEAD COVER PAINTED AS DIRECTED BY ARCHITECT.
- C. PROVIDE FIRE SPRINKLER COVERAGE IN ACCORDANCE TO NFPA 13 AND THE LOCAL AUTHORITY HAVING JURISDICTION IN ALL AREAS OF THE BUILDING UNLESS SPECIFICALLY NOTED OTHERWISE.
- D. SPRINKLER COVERAGE SHALL INCLUDE ABOVE CEILING ATTIC SPACE.

REFER TO SITE PLAN, SHEET MP1.01 FOR CONTINUATION

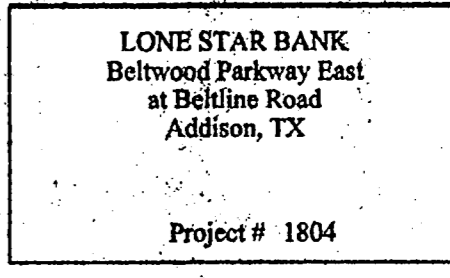
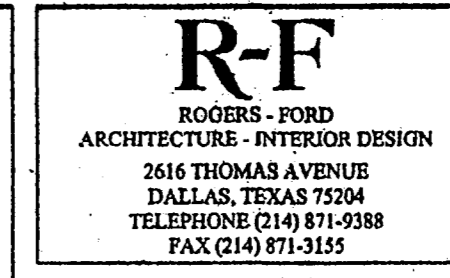
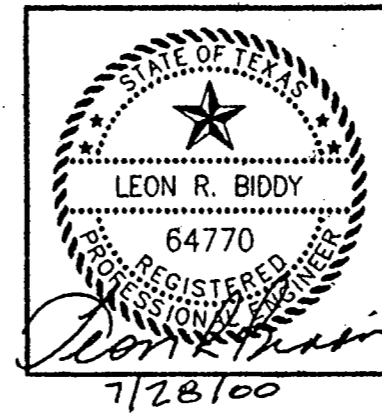
LOCATION FOR FIRE DEPARTMENT CONNECTION

6"

LOCATION FOR FIRE SPRINKLER RISER



FLOORPLAN - FIRE SPRINKLER SYSTEM
SCALE: 1/4" = 1'-0"



7-28-2000 Issue for Permit
8-17-2000 Issue for RFP

FP1.01

FIRE SPRINKLER SYSTEM PLAN