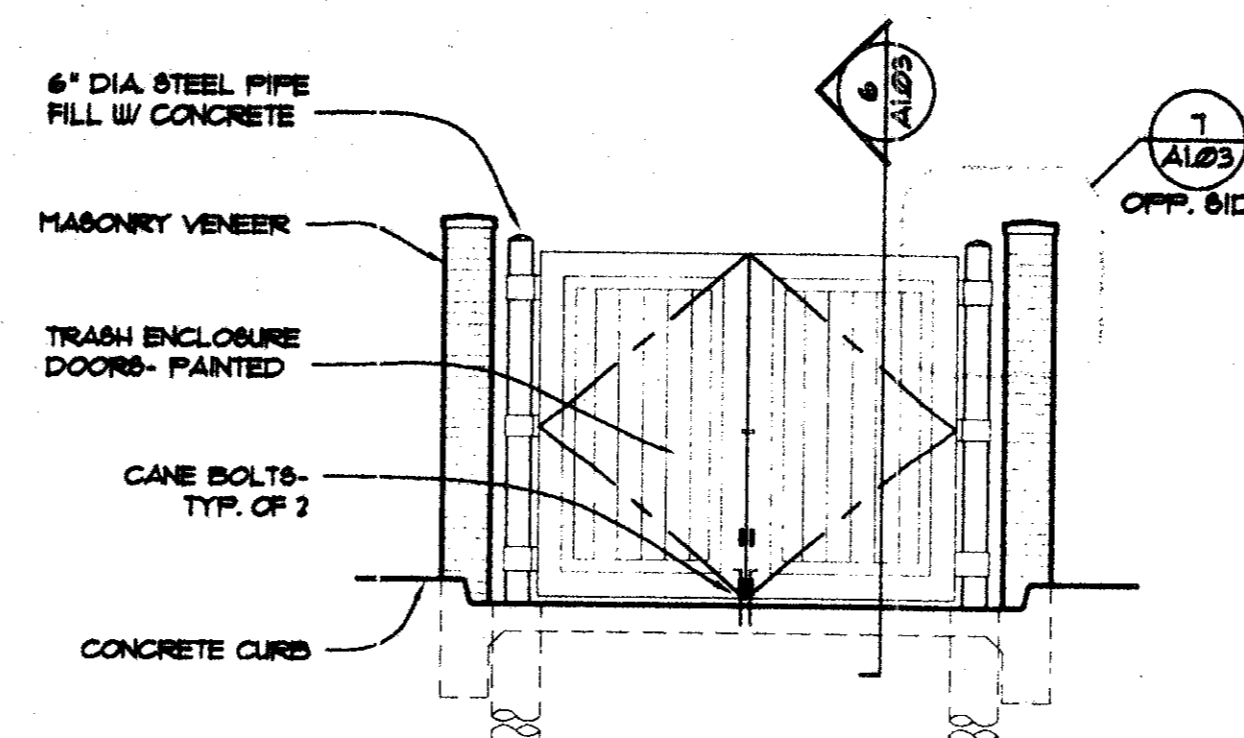
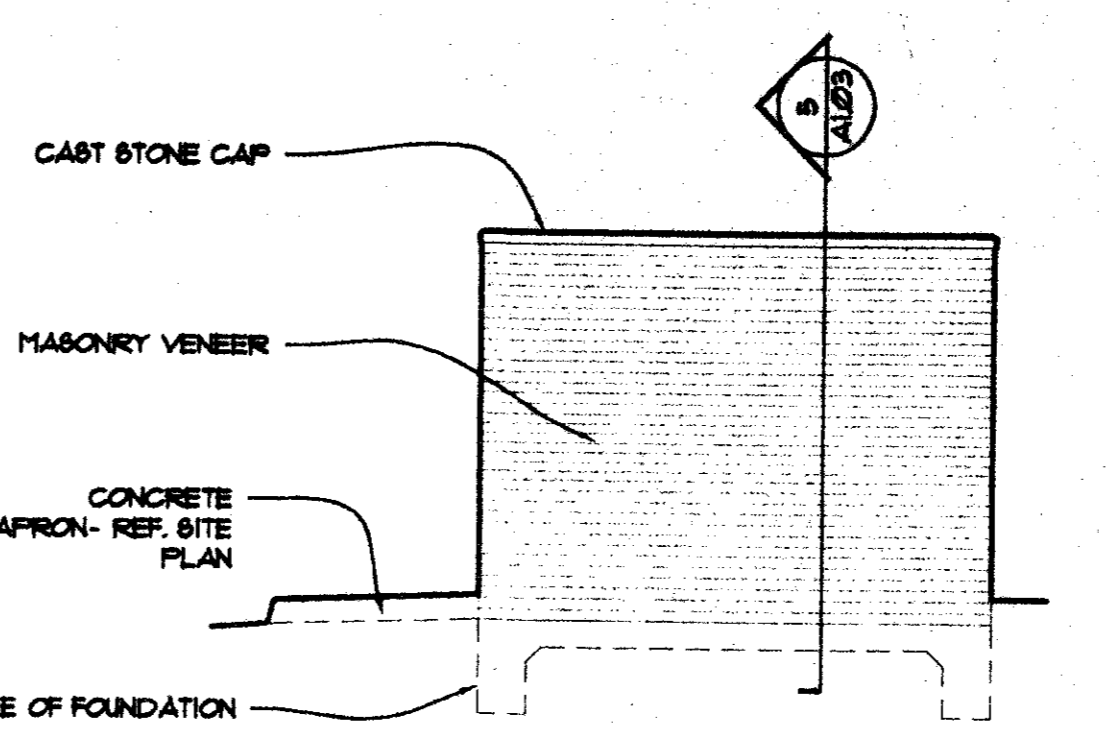


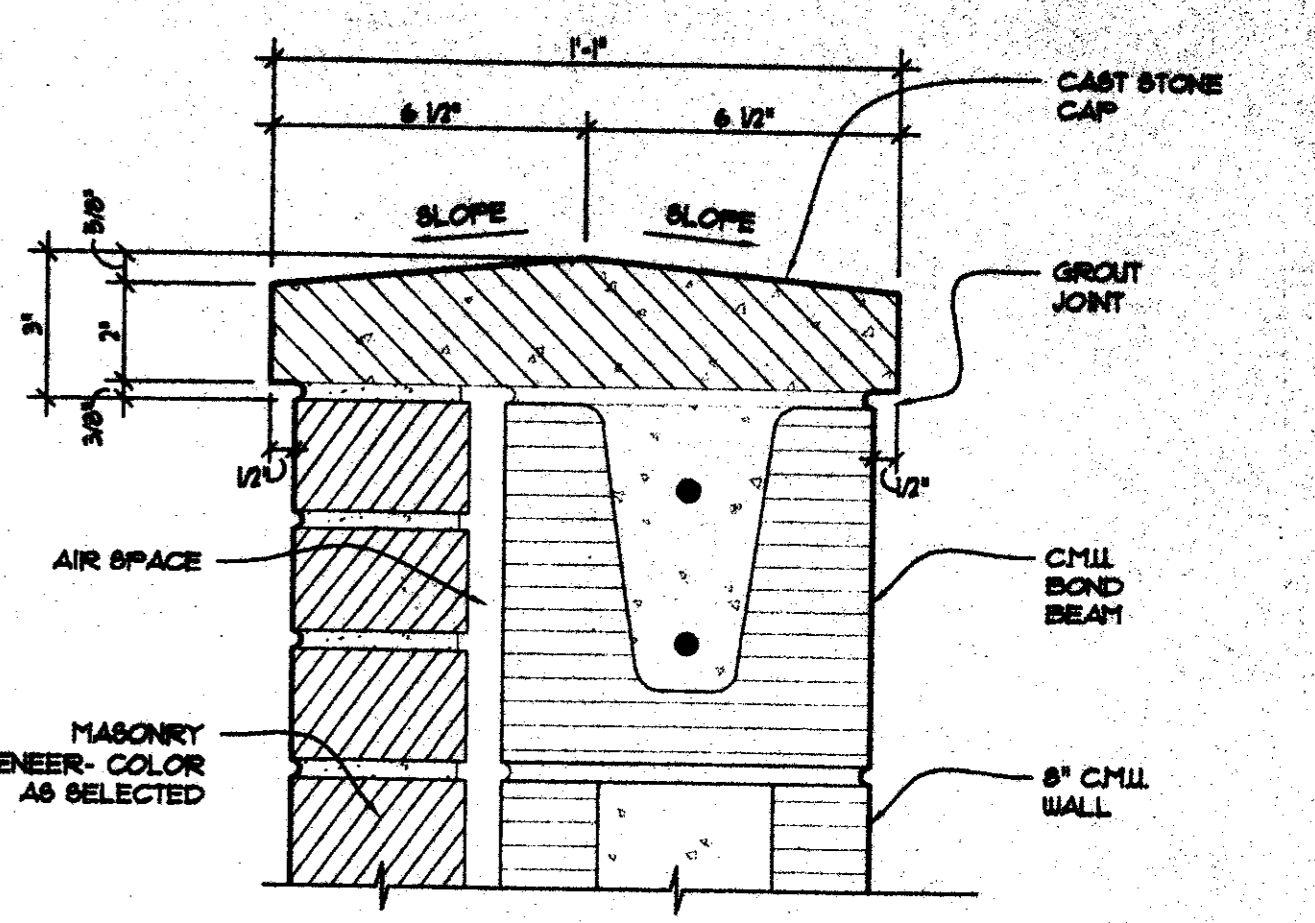
1 ENLARGED DUMPSTER ENCLOSURE PLAN  
 A1.03 SCALE: 1/4" = 1'-0"



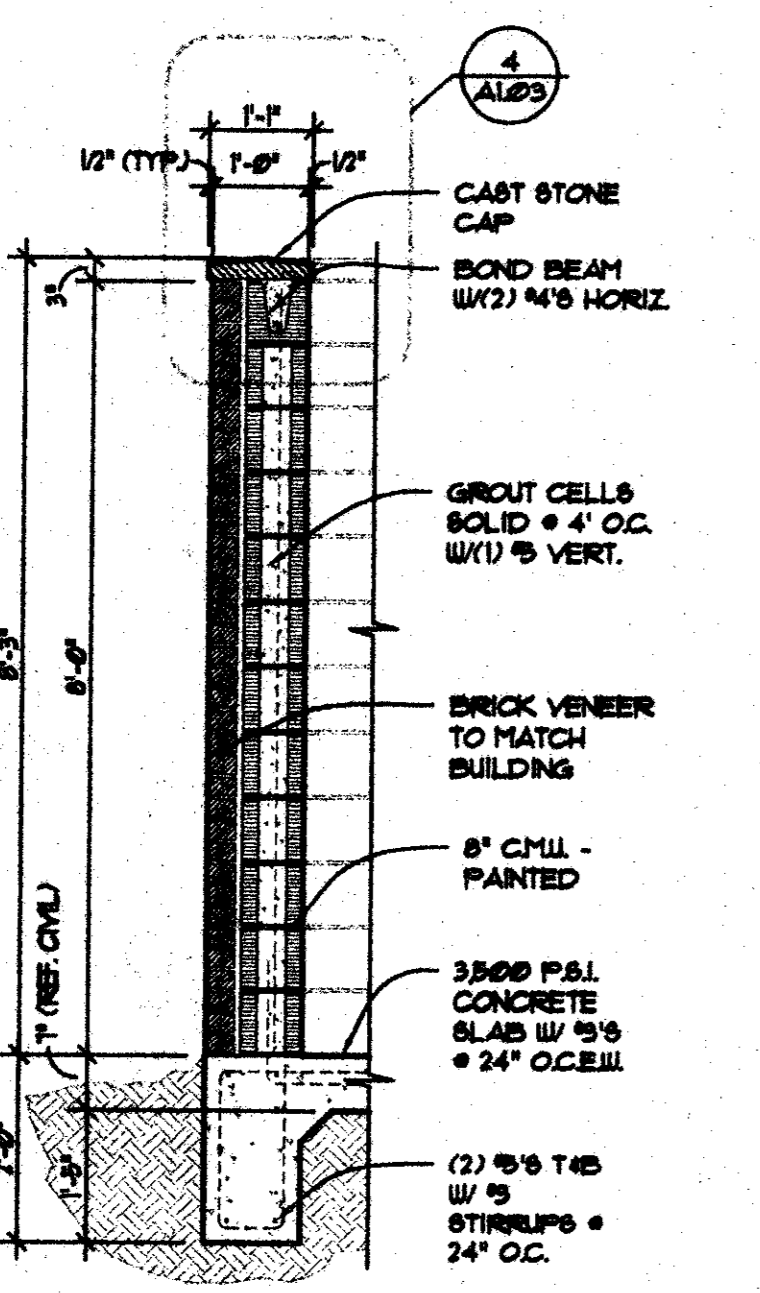
2 DUMPSTER ENCLOSURE  
 A1.03 SCALE: 1/4" = 1'-0"



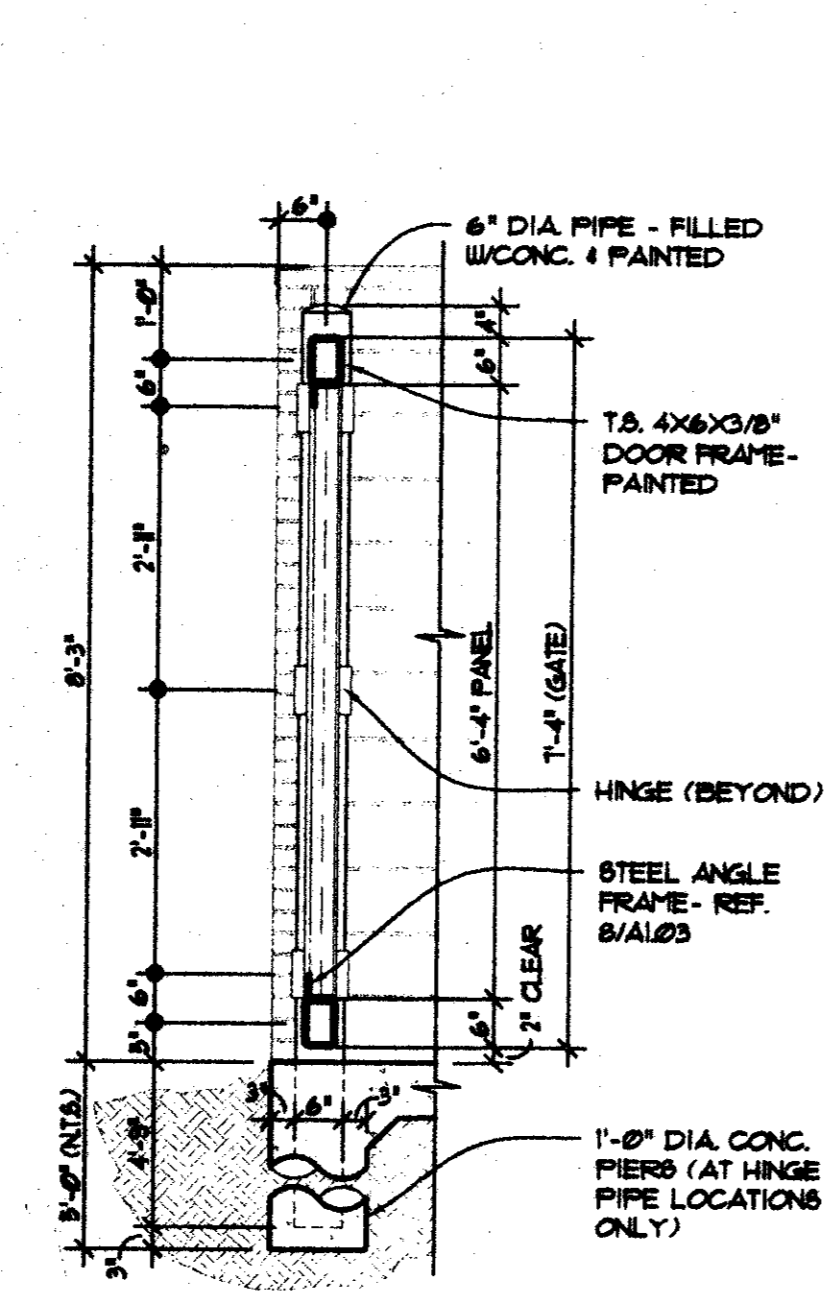
3 DUMPSTER ENCLOSURE  
 A1.03 SCALE: 1/4" = 1'-0"



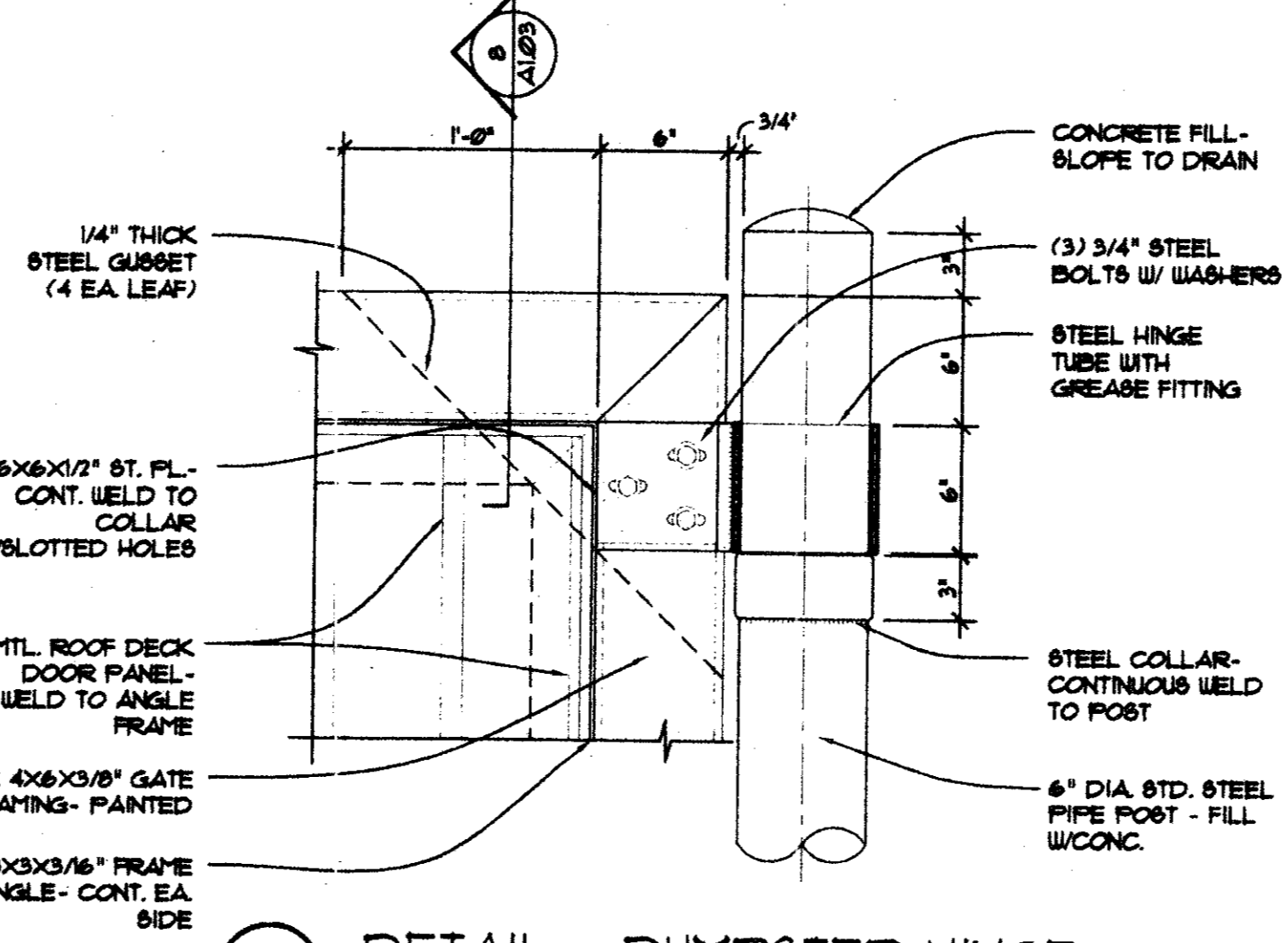
4 DETAIL - WALL CAP  
 A1.03 SCALE: 3" = 1'-0"



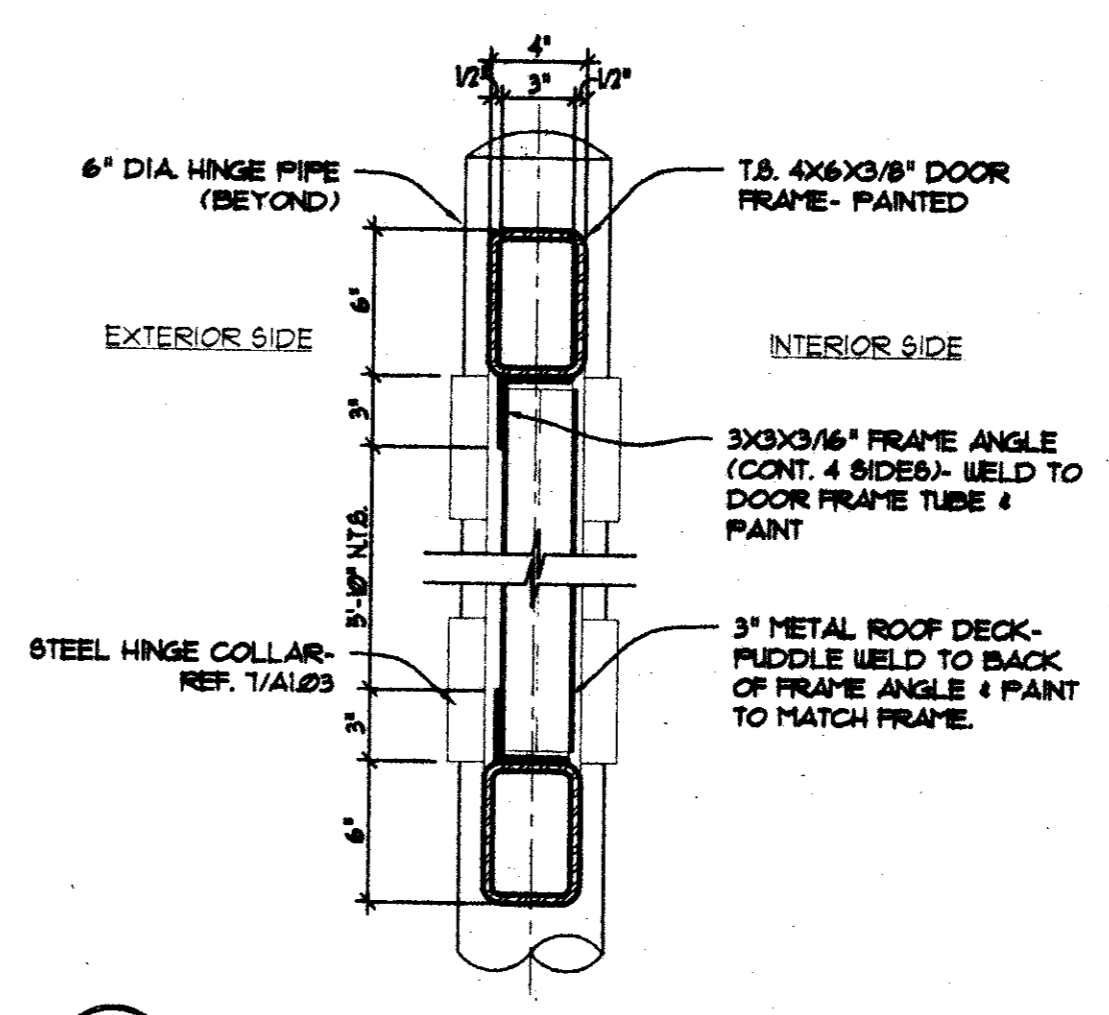
5 SECTION @ DUMPSTER  
 A1.03 SCALE: 1/2" = 1'-0"



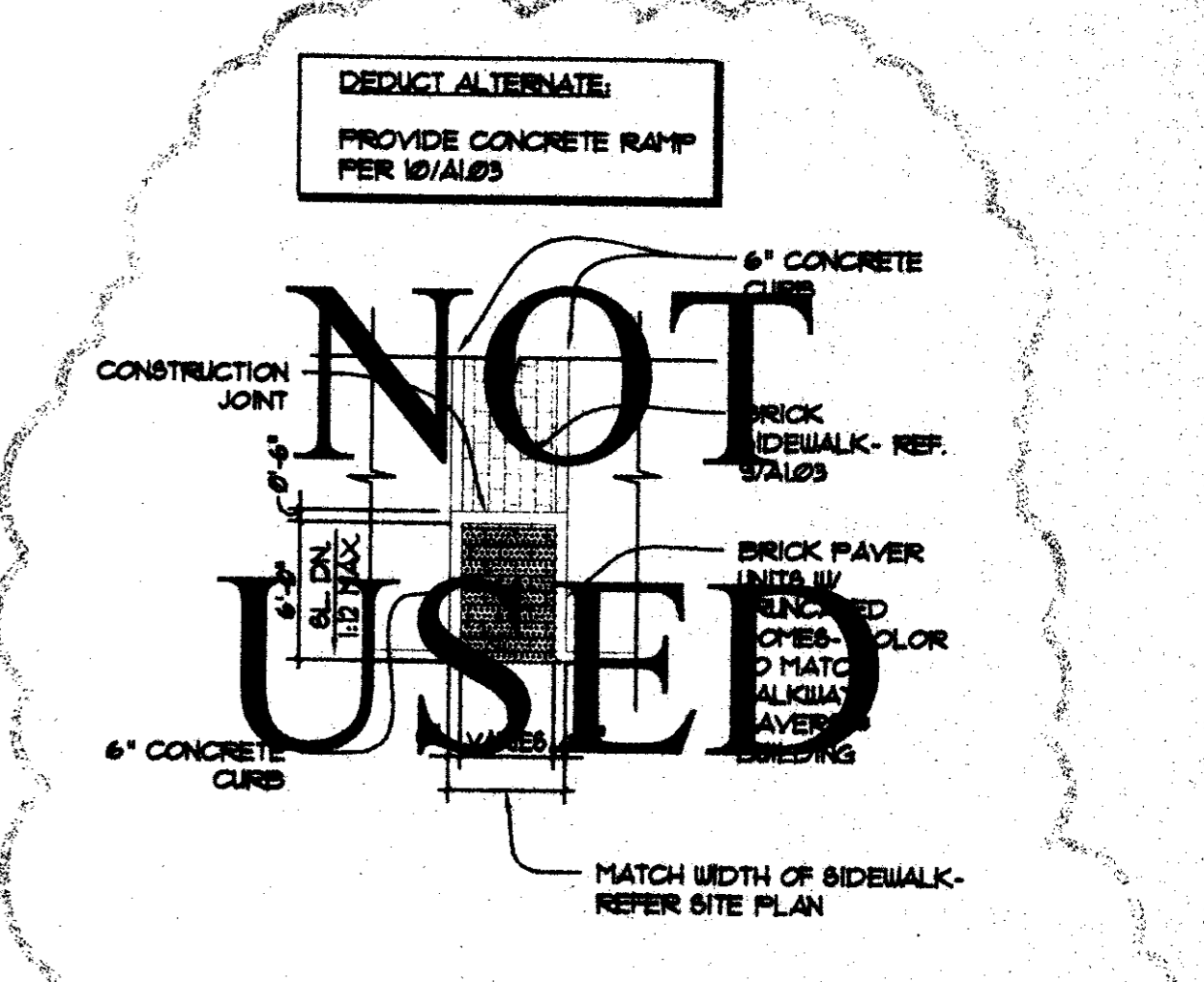
6 SECTION @ DOOR  
 A1.03 SCALE: 1/2" = 1'-0"



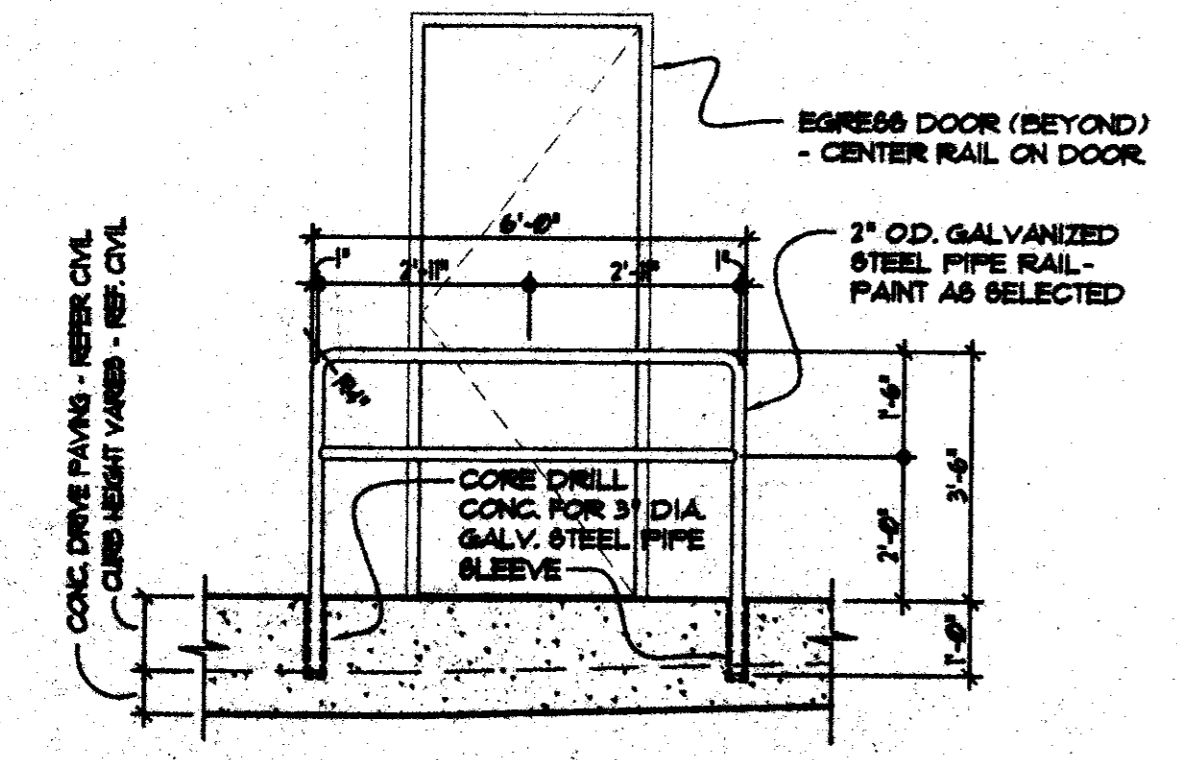
7 DETAIL - DUMPSTER HINGE  
 A1.03 SCALE: 1-1/2" = 1'-0"



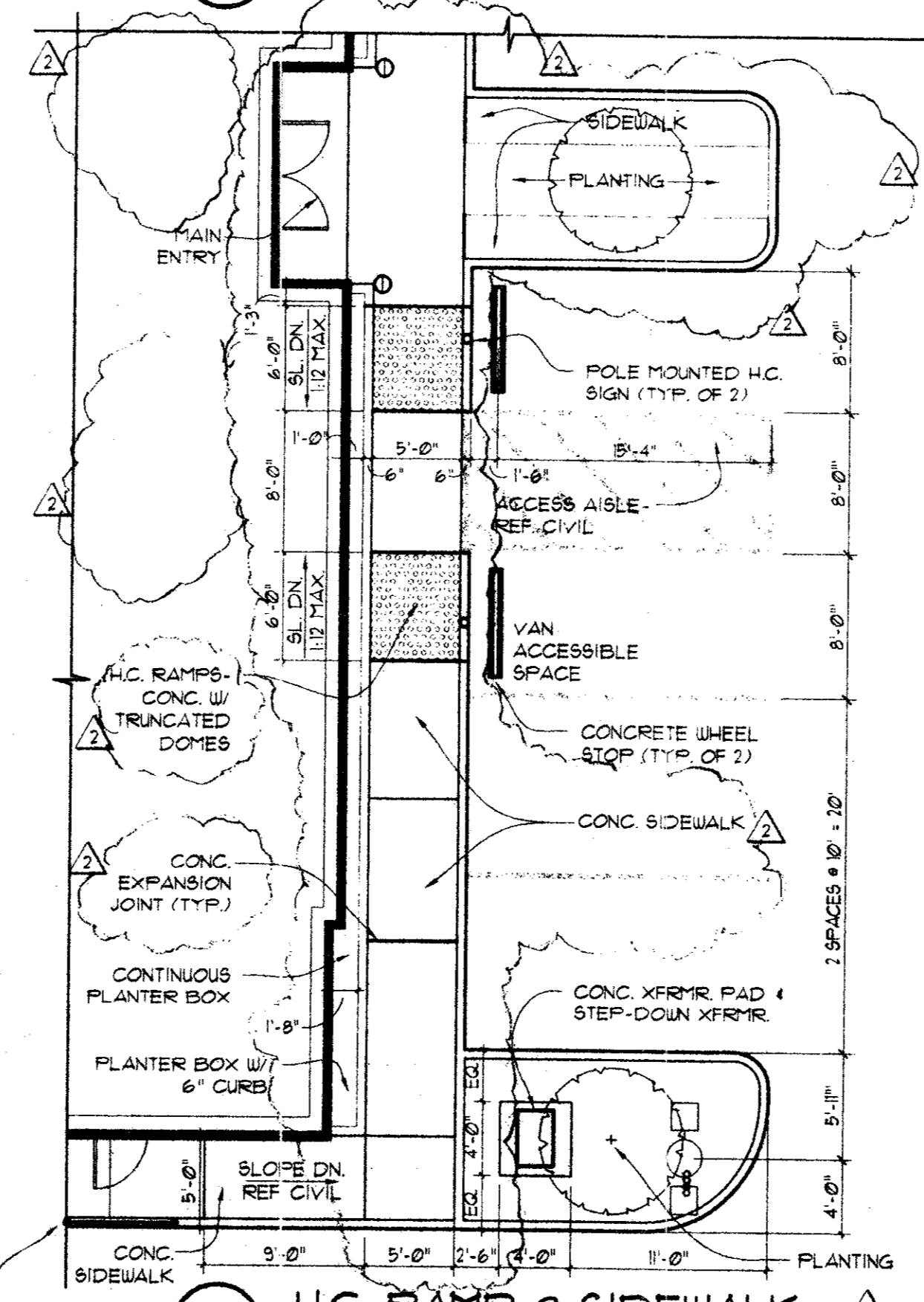
8 DETAIL - DUMPSTER GATE  
 A1.03 SCALE: 1-1/2" = 1'-0"



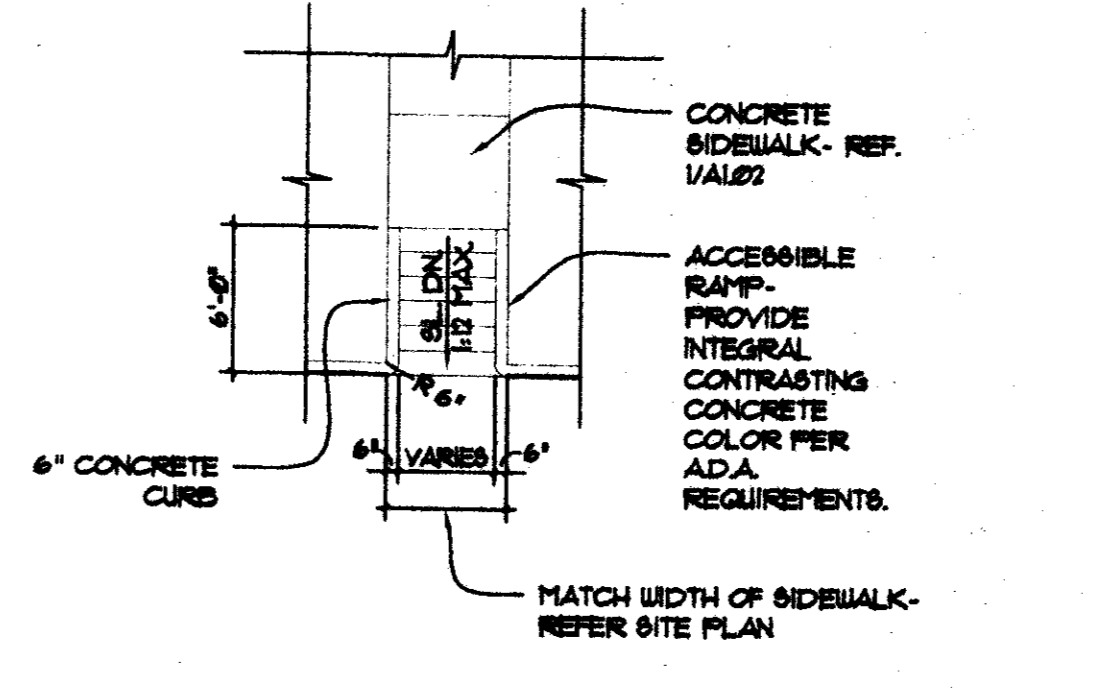
12 BRICK HANDICAPPED RAMP  
 A1.03 SCALE: 1/8" = 1'-0"



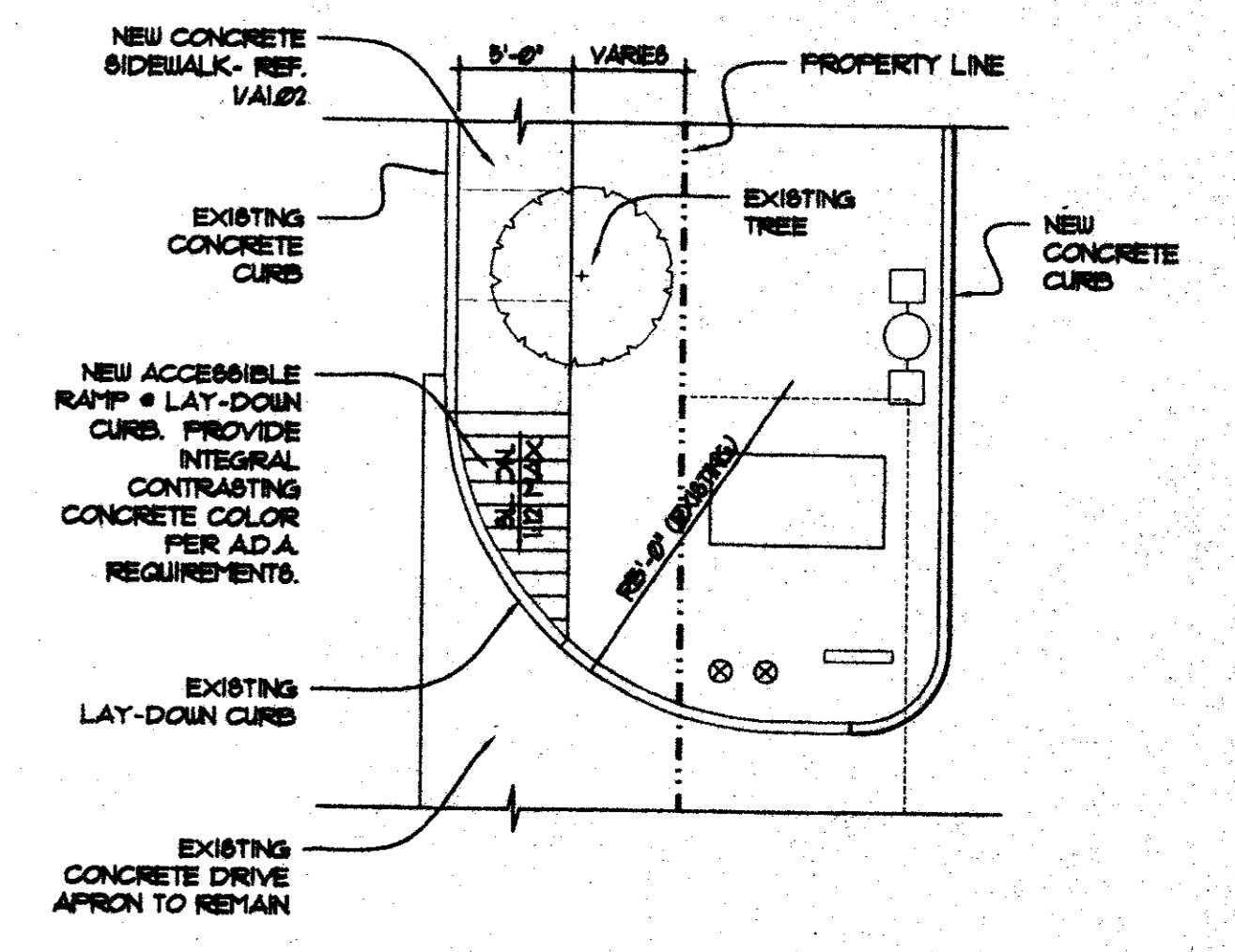
12 REMOVABLE GUARDRAIL  
 A1.03 SCALE: 3/8" = 1'-0"



9 H.C. RAMP @ SIDEWALK  
 A1.03 SCALE: 1/8" = 1'-0"



10 TYPICAL HANDICAPPED RAMP  
 A1.03 SCALE: 1/8" = 1'-0"



11 HANDICAPPED RAMP  
 A1.03 SCALE: 1/8" = 1'-0"

NOTE: RECESS FLATWORK PAVING 4" FOR MORTAR SET BRICK PAVERS WHERE SHOWN.



R-F  
 ROGERS FORD  
 ARCHITECTURE - INTERIOR DESIGN  
 2616 THOMAS AVENUE  
 DALLAS, TEXAS 75204  
 TELEPHONE (214) 871-9988  
 FAX (214) 871-3155

LONE STAR BANK  
 4650 BELTLINE ROAD  
 at Beltwood Parkway East  
 ADDISON, TX.  
 Project # 1804

07/25/00 ISSUE FOR PERMIT  
 08-17-00 ISSUE FOR BID  
 08-25-00 ADDENDUM #1  
 12-05-00 CONST. ISSUE

A1.03

SITE DETAILS

Copyright 2000 ROGERS FORD, L.L.C.  
 Drawing: P:\0041\_03 - Addendum Arch\05-Drawing\0041A1.03.dwg at Dec 04, 2000 - 11:50am by aay