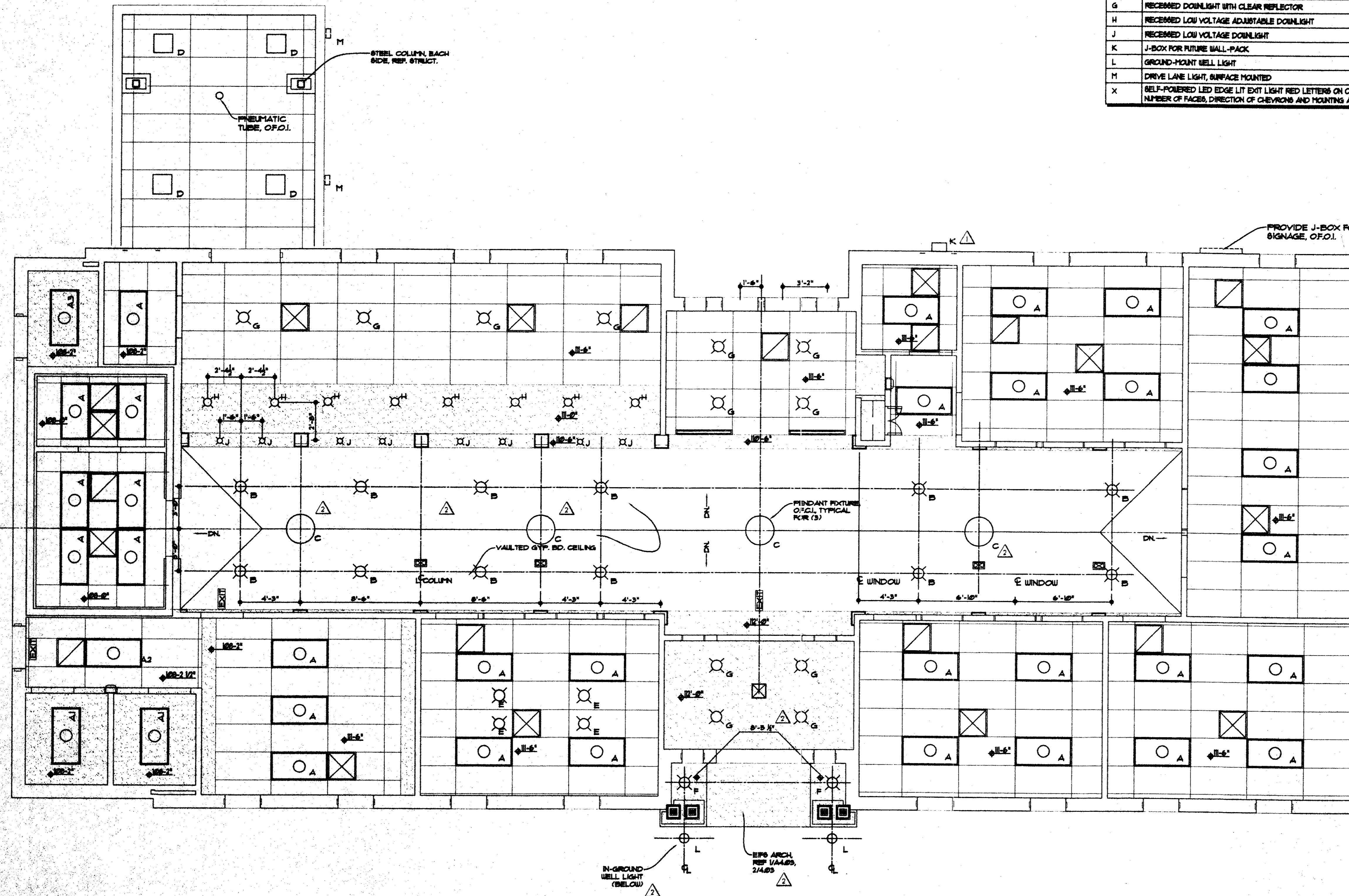


LIGHT SCHEDULE	
TYPE	DESCRIPTION
A	RECESSED 2x4 PARABOLIC FLUORESCENT FIXTURE 71 CELL
A1	RECESSED AIR HANDLING ACRYLIC LINED FLUORESCENT TROWER WITH (3) LAMPS
A2	NOT USED (SAME AS 'A')
A3	SURFACE MOUNTED CHANNEL STRIP FLUORESCENT WITH WIRE GUARD AND (3) LAMPS
B	RECESSED DOWNLIGHT WITH CLEAR REFLECTOR
C	PENDANT LIGHT, OFCL
D	RECESSED SQUARE METAL HALIDE DOWNLIGHT WITH HFF BALLAST AND GLASS LENS
E	RECESSED MULTI-PURPOSE ADJUSTABLE ACCENT WITH CLEAR REFLECTOR
F	EXTERIOR DOWNLIGHT
G	RECESSED DOWNLIGHT WITH CLEAR REFLECTOR
H	RECESSED LOW VOLTAGE ADJUSTABLE DOWNLIGHT
J	RECESSED LOW VOLTAGE DOWNLIGHT
K	J-BOX FOR FUTURE WALL-PACK
L	GROUND-MOUNT WELL LIGHT
M	DRIVE LANE LIGHT, SURFACE MOUNTED
X	SELF-POWERED LED EDGE LIT EXIT LIGHT RED LETTERS ON CLEAR FACE. NUMBER OF FACES, DIRECTION OF CHEVRONS AND MOUNTING AS REQUIRED.

REFLECTED CEILING PLAN SYMBOL LEGEND	
	LAY-IN ACOUSTICAL CEILING TILE REF. FINISH SCHEDULE / SPECIFICATIONS
	GYP. BOARD CLG. PAINTED REF. FINISH SCHEDULE
	2x4 FLUORESCENT LIGHT REF. LIGHTING SCHED.
	RECESSED INCANDESCENT DOWNLIGHT REF. LIGHTING SCHEDULE
	SUPPLY AIR GRILLE AS SPECIFIED
	RETURN AIR GRILLE AS SPECIFIED



REFLECTED CEILING PLAN
SCALE: 1/4" = 1'-0"



R-F
ROGERS - FORD
ARCHITECTURE - INTERIOR DESIGN
2616 THOMAS AVENUE
DALLAS, TEXAS 75204
TELEPHONE (214) 871-9588
FAX (214) 871-3155

LONE STAR BANK
4650 BELTLINE ROAD
at Beltwood Parkway East
ADDISON, TX
Project # 1804

7-25-2000 PERMIT ISSUE
8-17-2000 ISSUE FOR BID
12-05-00 CONST. ISSUE
12-05-00 P.R. #1

A2.02

REFLECTED CEILING PLAN