

1 WOMEN'S 120  
AS-03 SCALE: 1/2" = 1'-0"

2 WOMEN'S 120  
AS-03 SCALE: 1/2" = 1'-0"

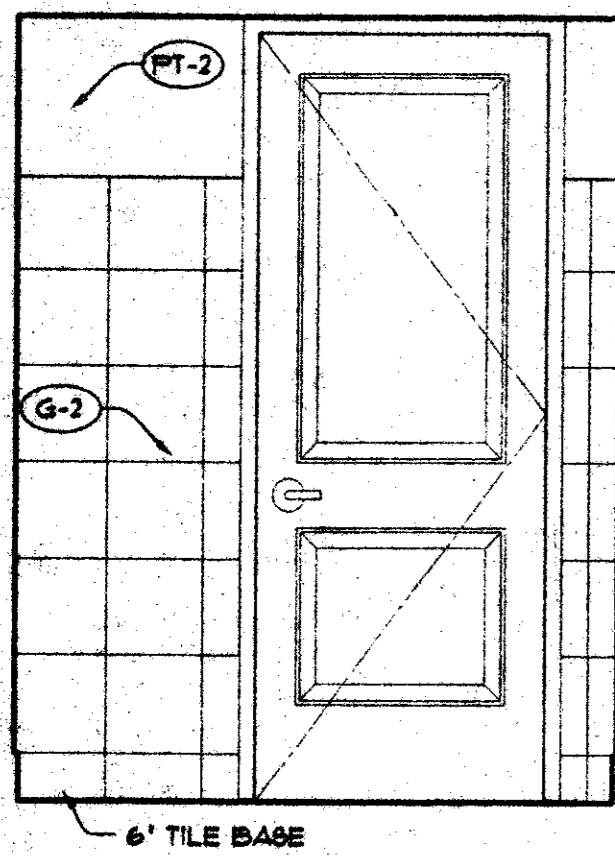
3 WOMEN'S 120  
AS-03 SCALE: 1/2" = 1'-0"

4 WOMEN'S 120  
AS-03 SCALE: 1/2" = 1'-0"

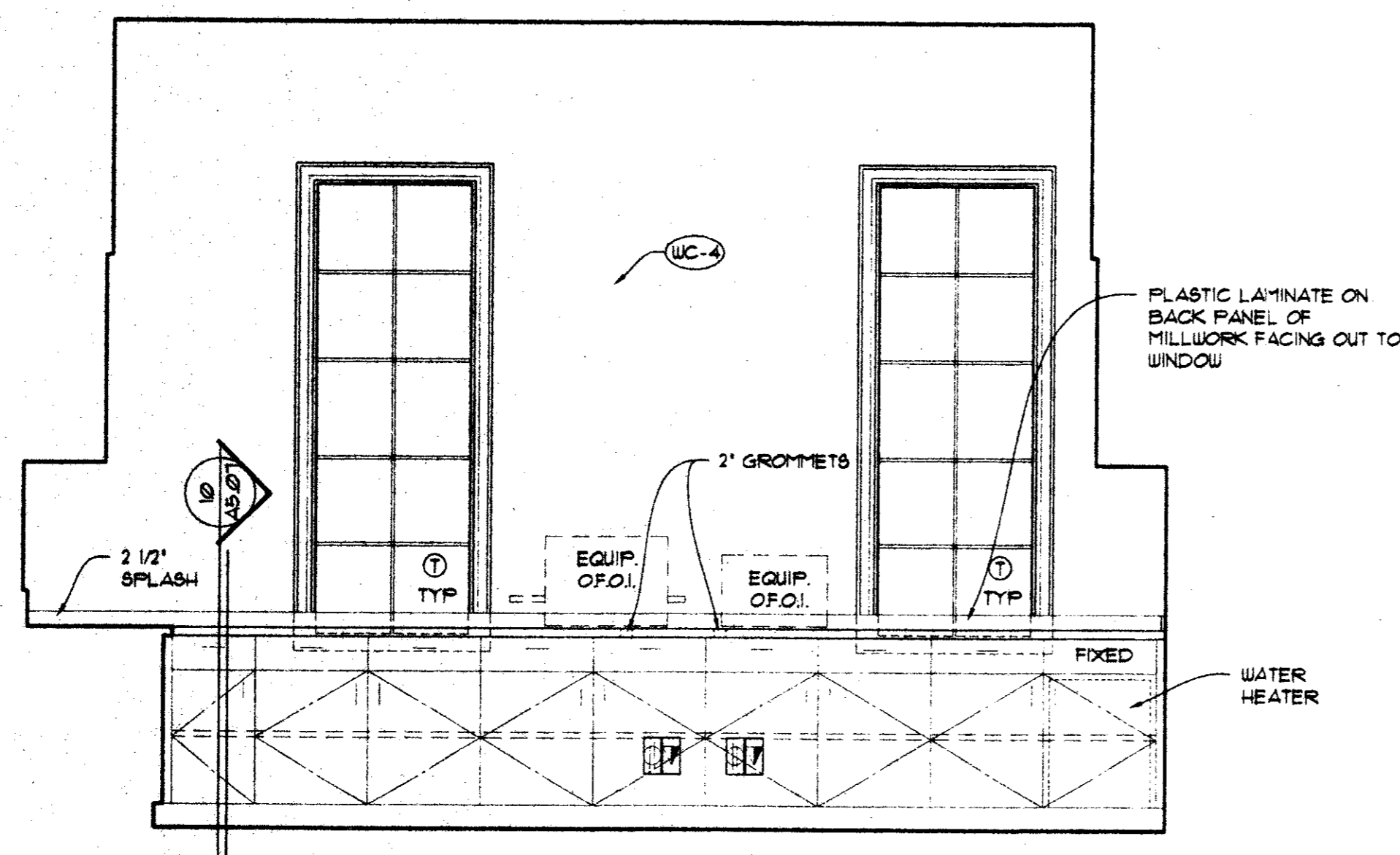
5 MEN'S 119  
AS-03 SCALE: 1/2" = 1'-0"

6 MEN'S 119  
AS-03 SCALE: 1/2" = 1'-0"

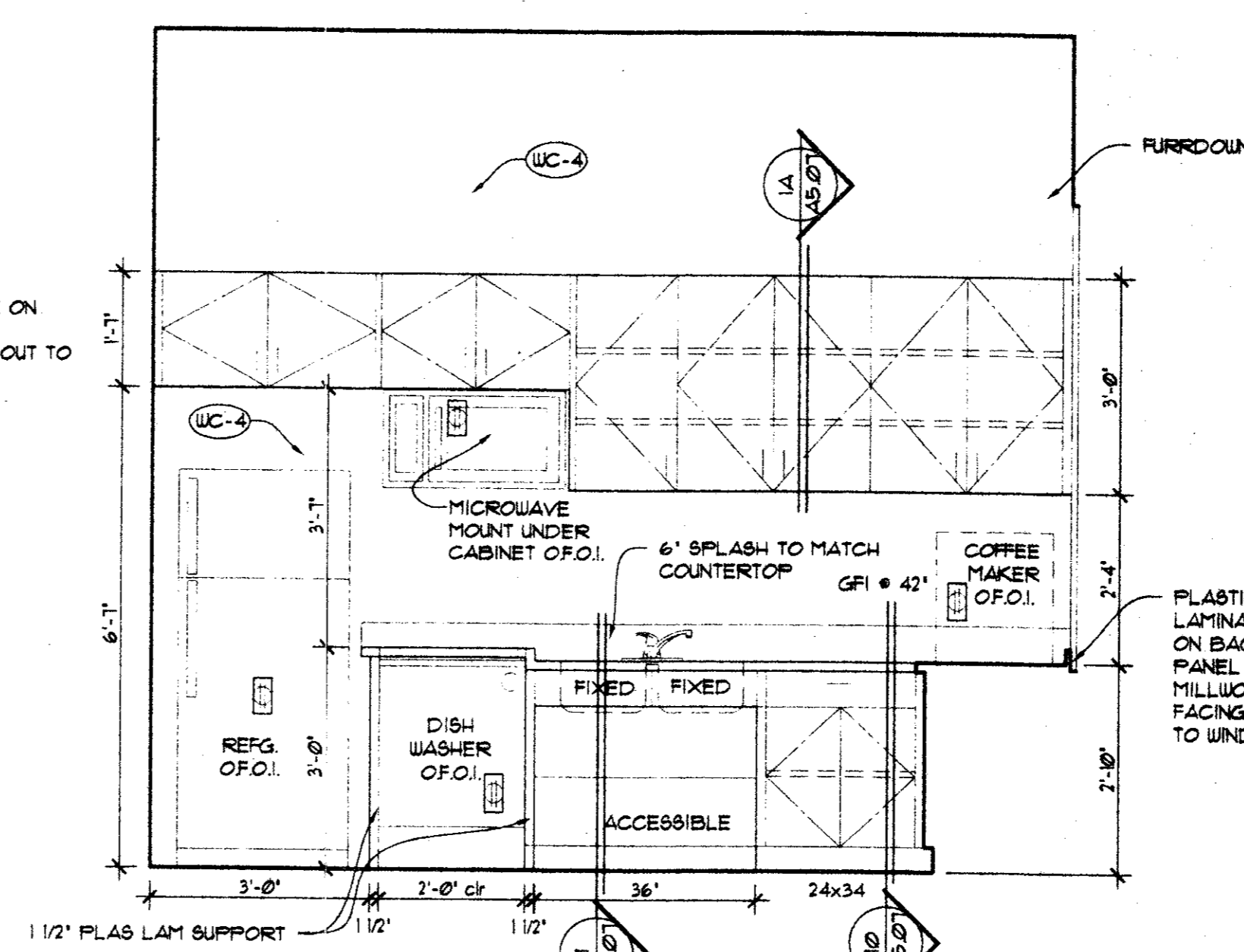
7 MEN'S 119  
AS-03 SCALE: 1/2" = 1'-0"



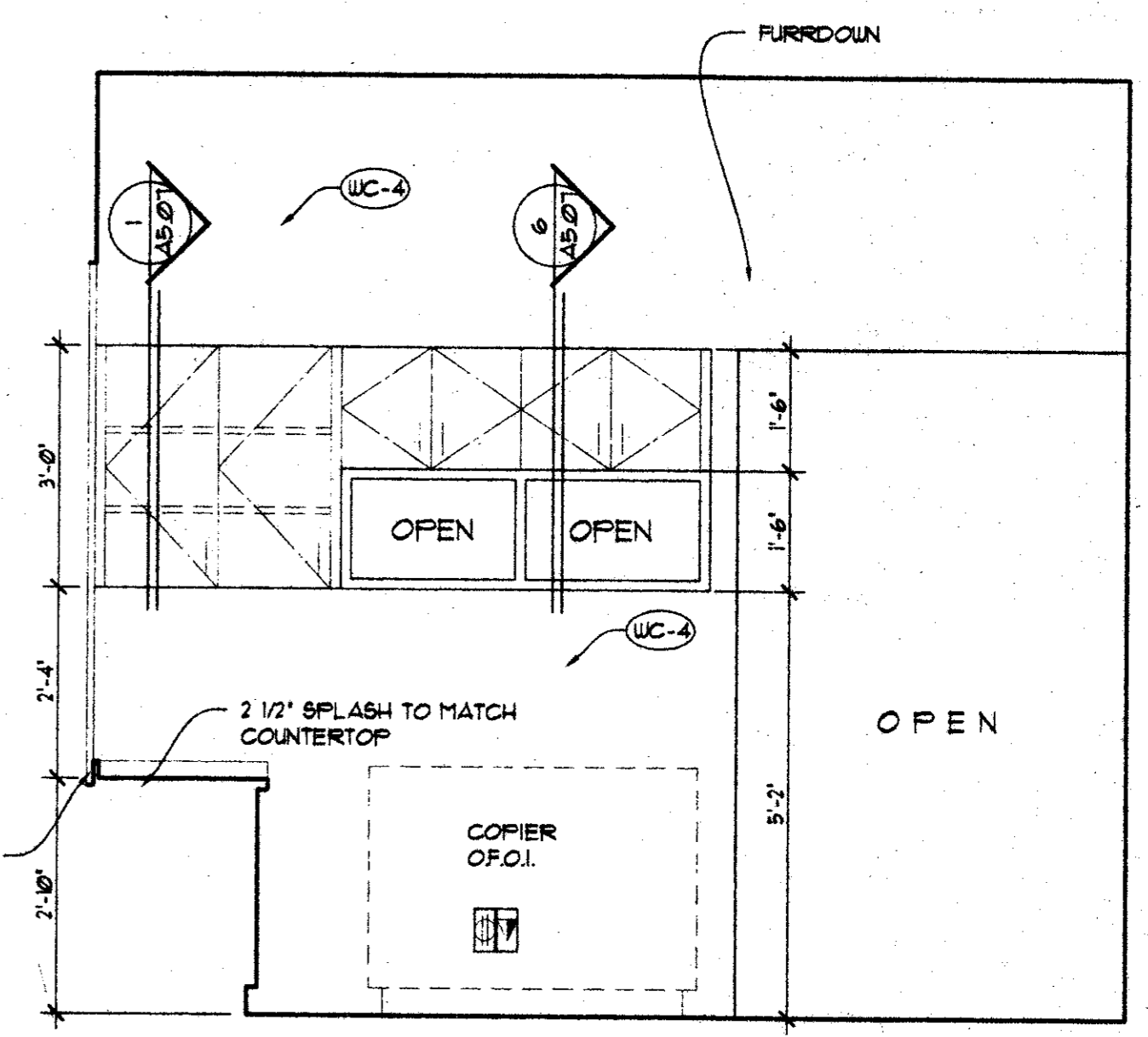
8 MEN'S 119  
AS-03 SCALE: 1/2" = 1'-0"



9 WORK 117  
AS-03 SCALE: 1/2" = 1'-0"



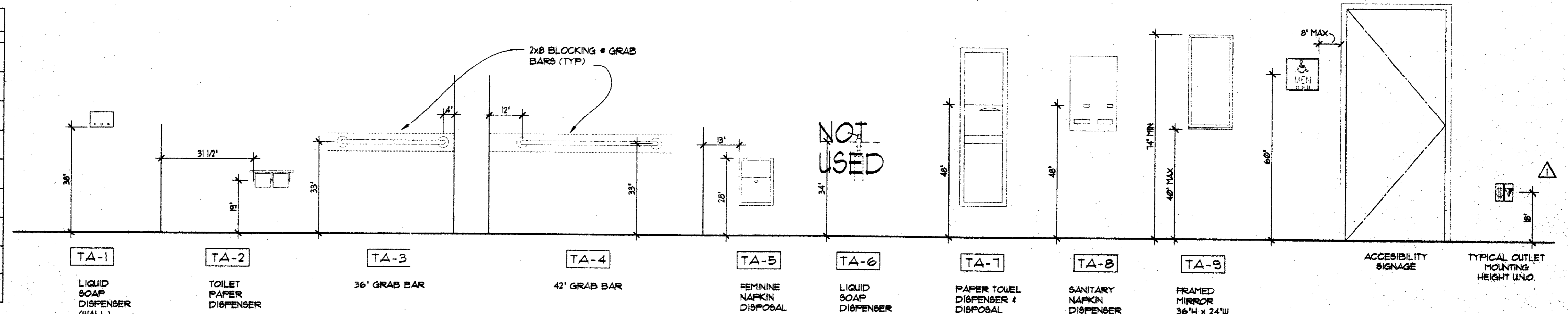
10 WORK 117  
AS-03 SCALE: 1/2" = 1'-0"



11 WORK 117  
AS-03 SCALE: 1/2" = 1'-0"

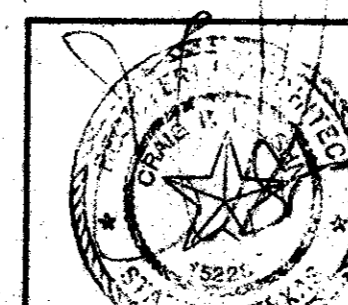
TOILET ACCESSORIES		
NUMBER	ITEM DESCRIPTION	REMARKS
TA-1	Liquid Soap Dispenser, recessed	Bobrick B-306
TA-2	Toilet Paper Dispenser	Bobrick B-2140
TA-3	Grab Bar--36"	Bobrick B-6806 x 36"
TA-4	Grab Bar--42"	Bobrick B-6806 x 42"
TA-5	Feminine Napkin Dispenser recessed	Bobrick B-393
TA-6	Not Used	
TA-7	Paper Towel Dispenser and Receptacle, recessed	Bobrick B-3603
TA-8	Feminine Napkin Dispenser recessed	Bobrick B-3900 x 2 (30 cents)
TA-9	Framed Mirror	Bobrick B-290 24"x36"

NOTES:  
1. Refer Interior Elevations on Sheet A5-03 for mounting heights UNO.  
2. Refer Sheet A5-01 for regulations regarding water closets and flush controls.  
3. Refer Sheet A5-02 for regulations and mounting heights for sinks.



12 MOUNTING HEIGHTS  
AS-03 SCALE: 1/2" = 1'-0"

TOILET ACCESSORIES



**R-F**  
ROGERS - FORD  
ARCHITECTURE - INTERIOR DESIGN  
2616 THOMAS AVENUE  
DALLAS, TEXAS 75284  
TELEPHONE (214) 871-9388  
FAX (214) 871-3155

LONE STAR BANK  
Beltwood Parkway East  
at Beltline Road  
Addicks, TX  
Project # 1804

7-25-00 ISSUED FOR PERMIT  
8-17-00 ISSUE FOR BID  
12-05-00 CONST. ISSUE  
AS-03