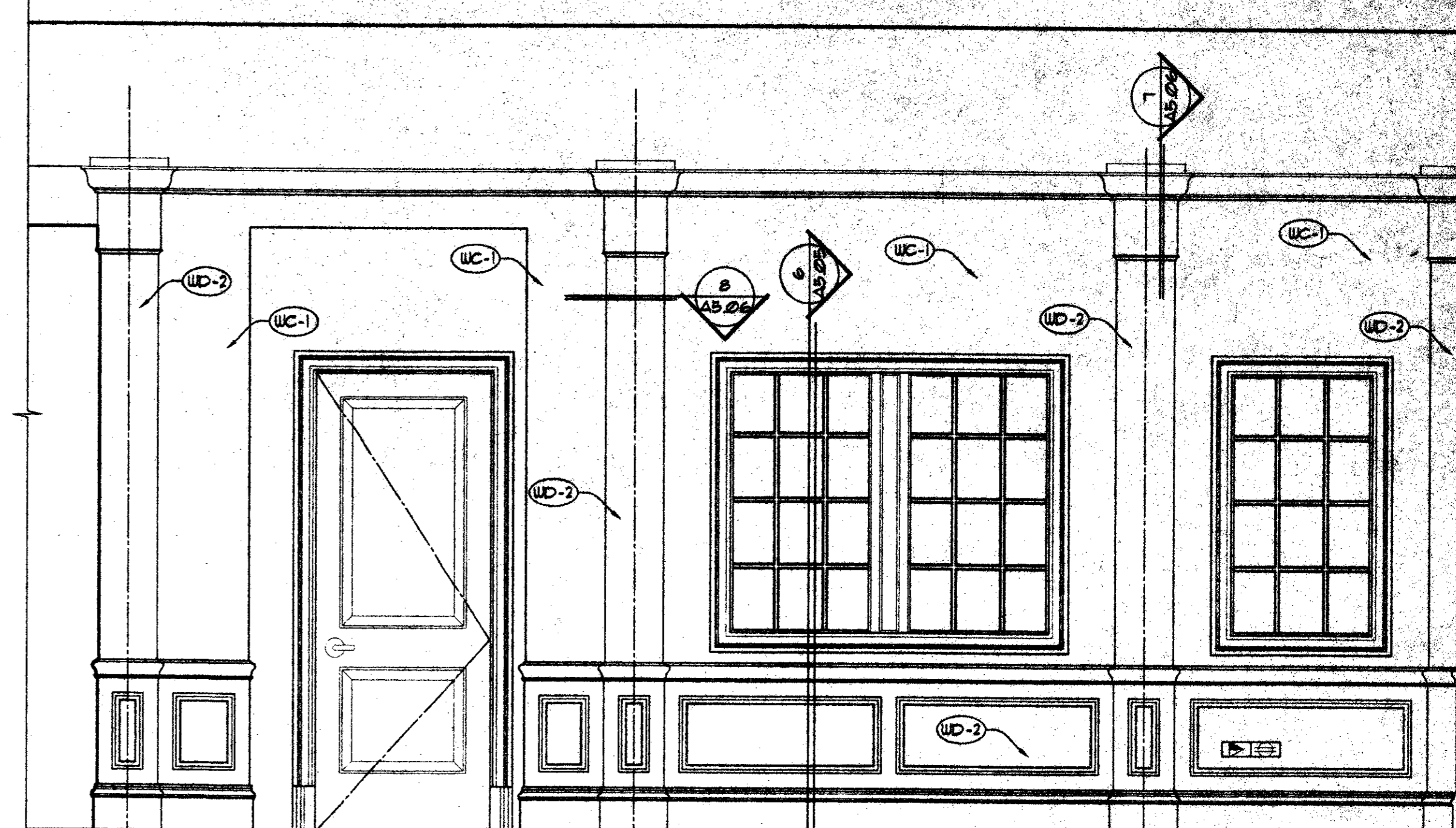
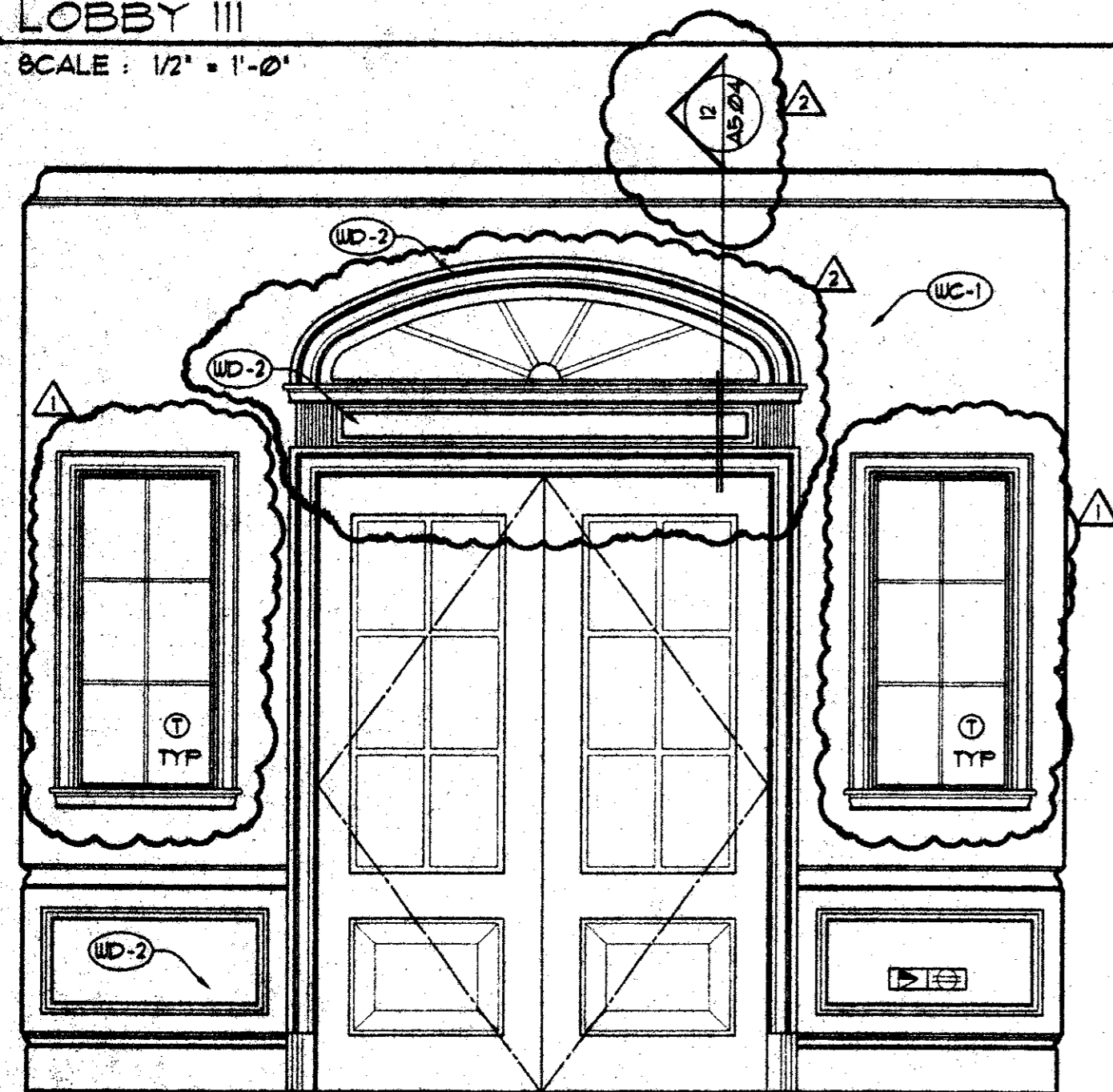


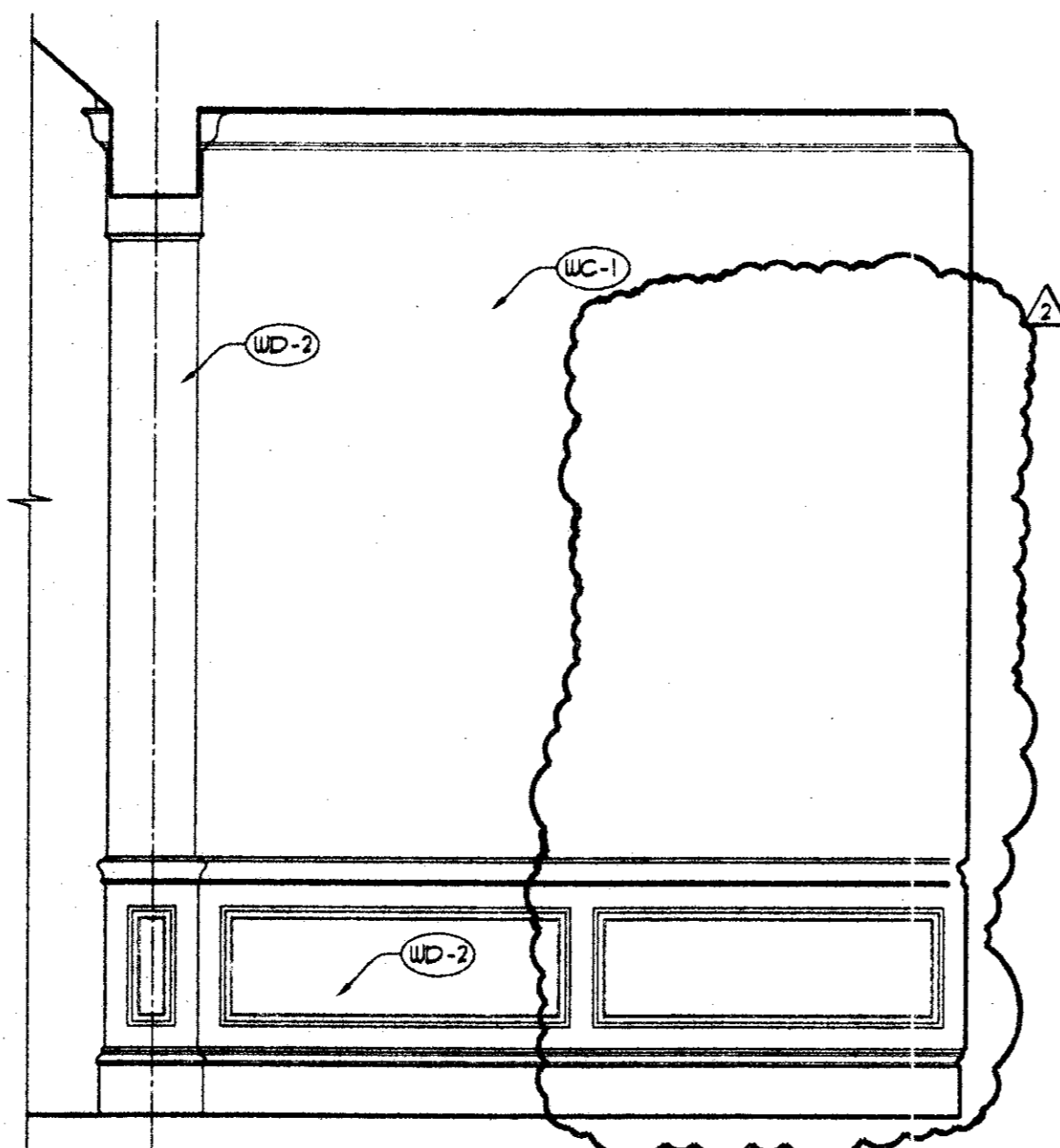
1 LOBBY III
A5.05 SCALE: 1/2" = 1'-0"



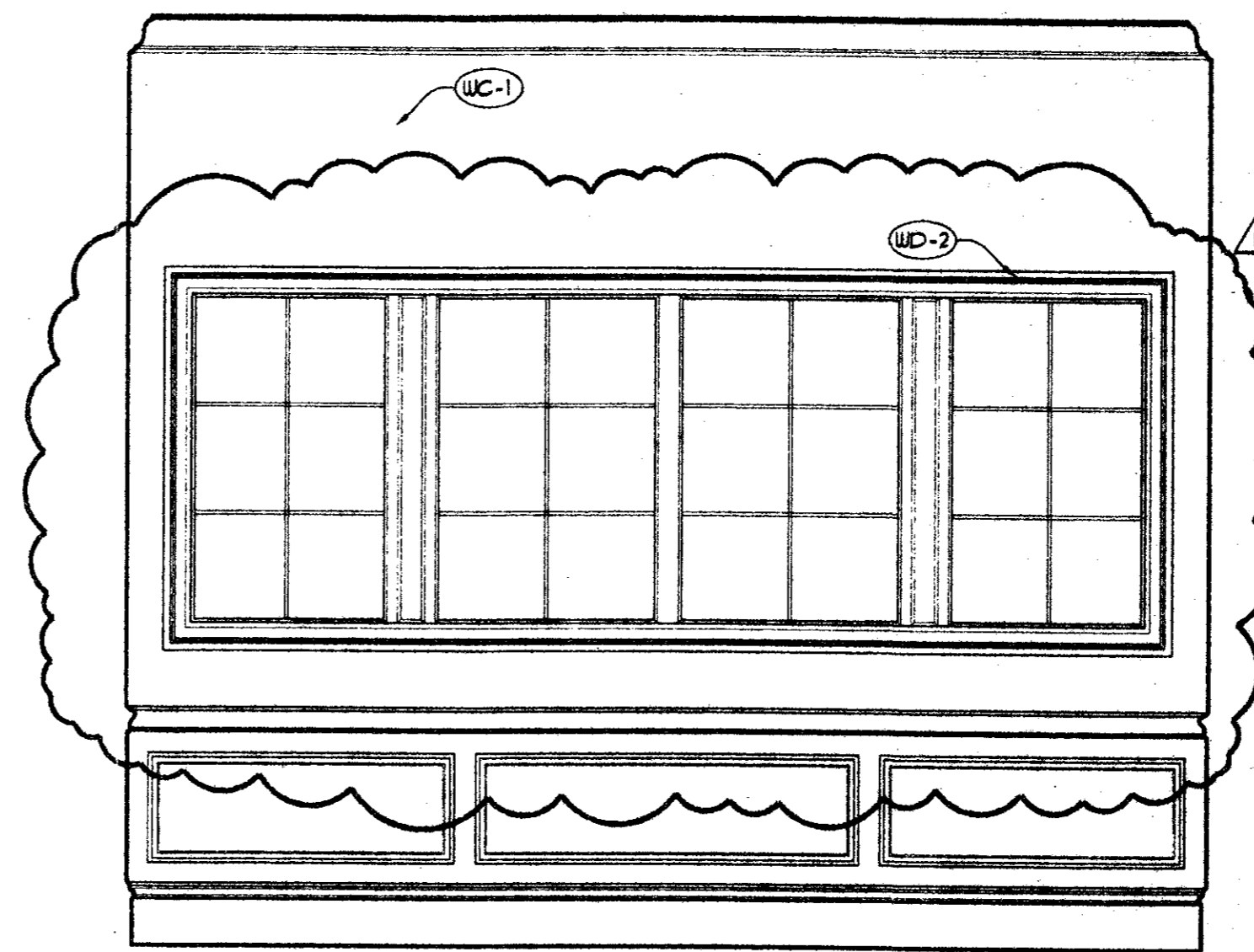
2 WAITING 104
A5.05 SCALE: 1/2" = 1'-0"



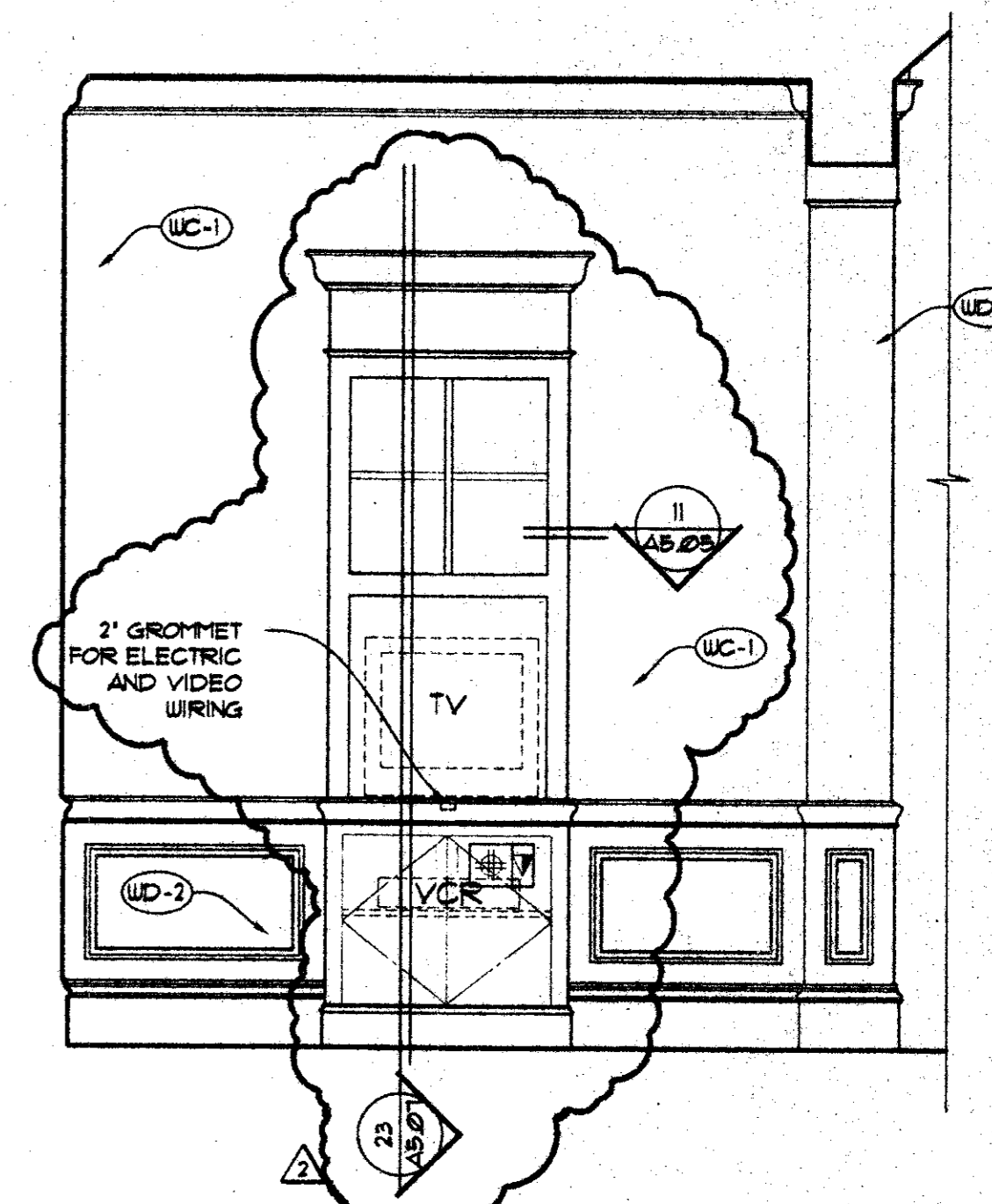
3 WAITING 103
A5.05 SCALE: 1/2" = 1'-0"



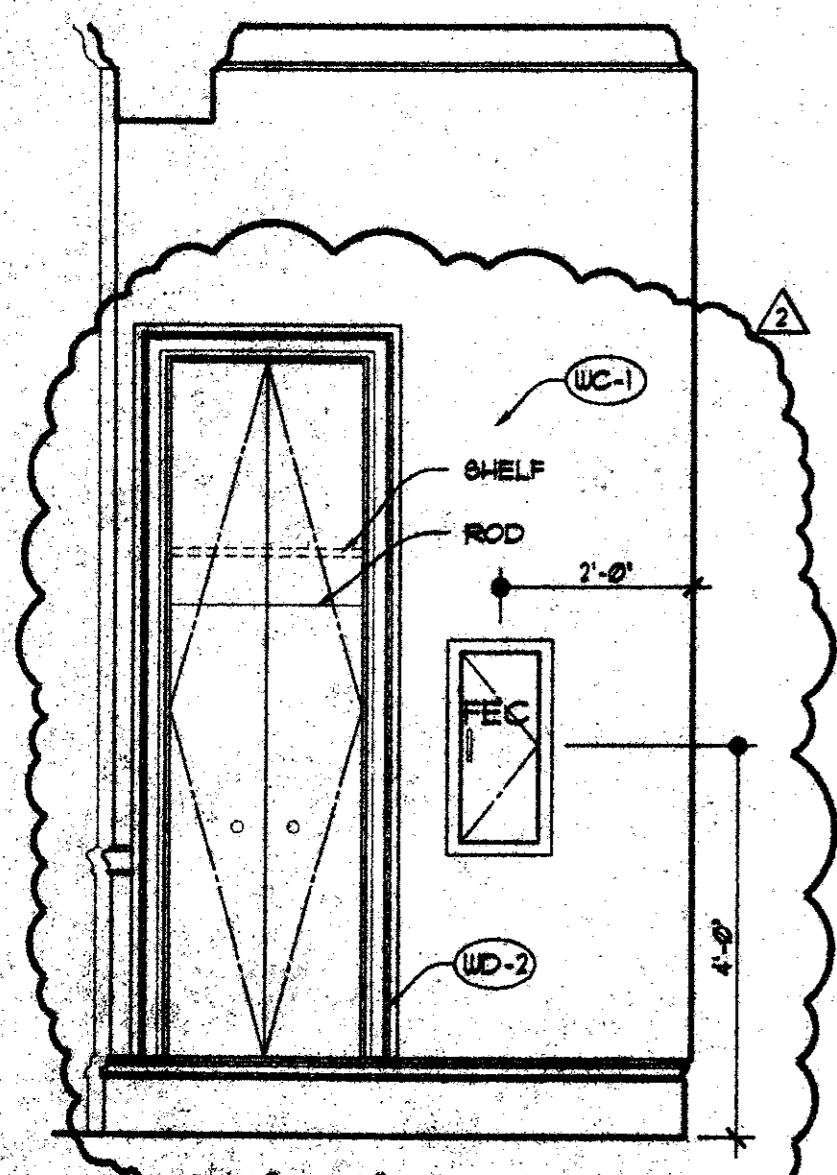
4 WAITING 103
A5.05 SCALE: 1/2" = 1'-0"



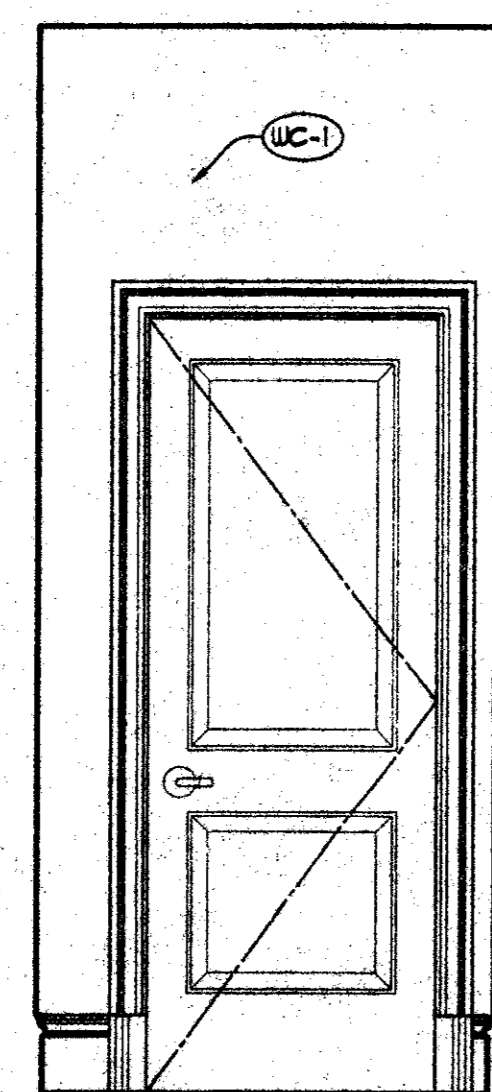
5 WAITING 103
A5.05 SCALE: 1/2" = 1'-0"



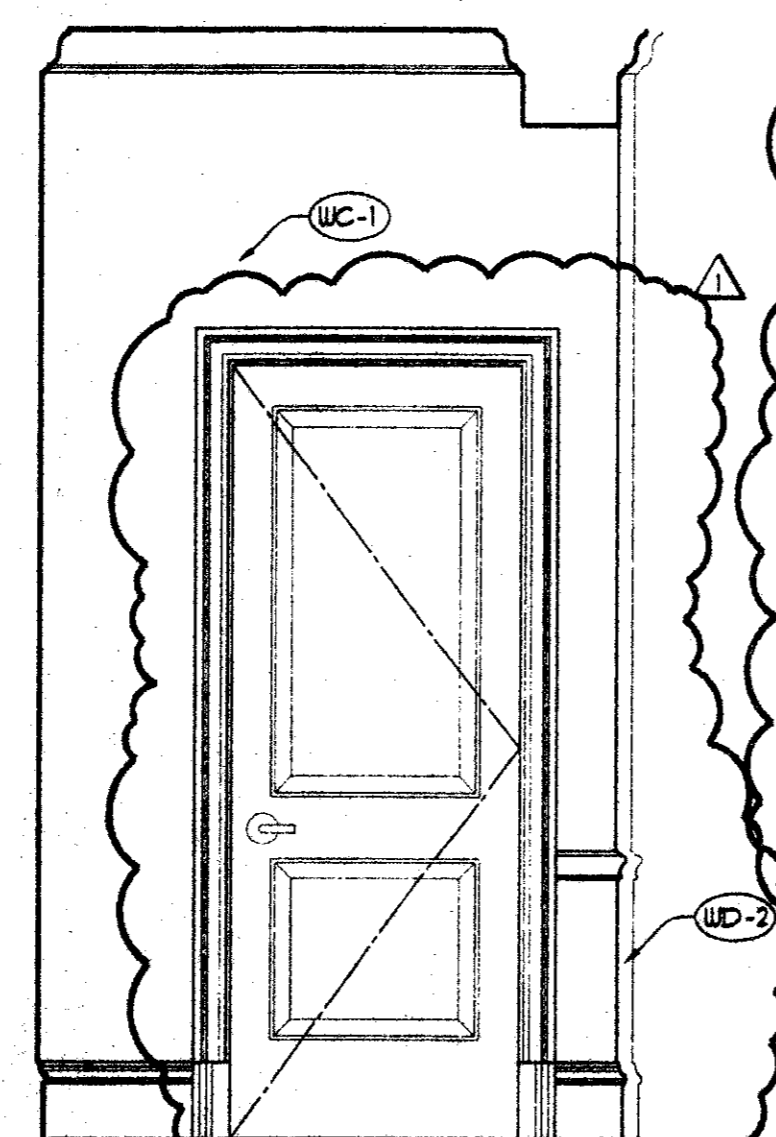
6 WAITING 103
A5.05 SCALE: 1/2" = 1'-0"



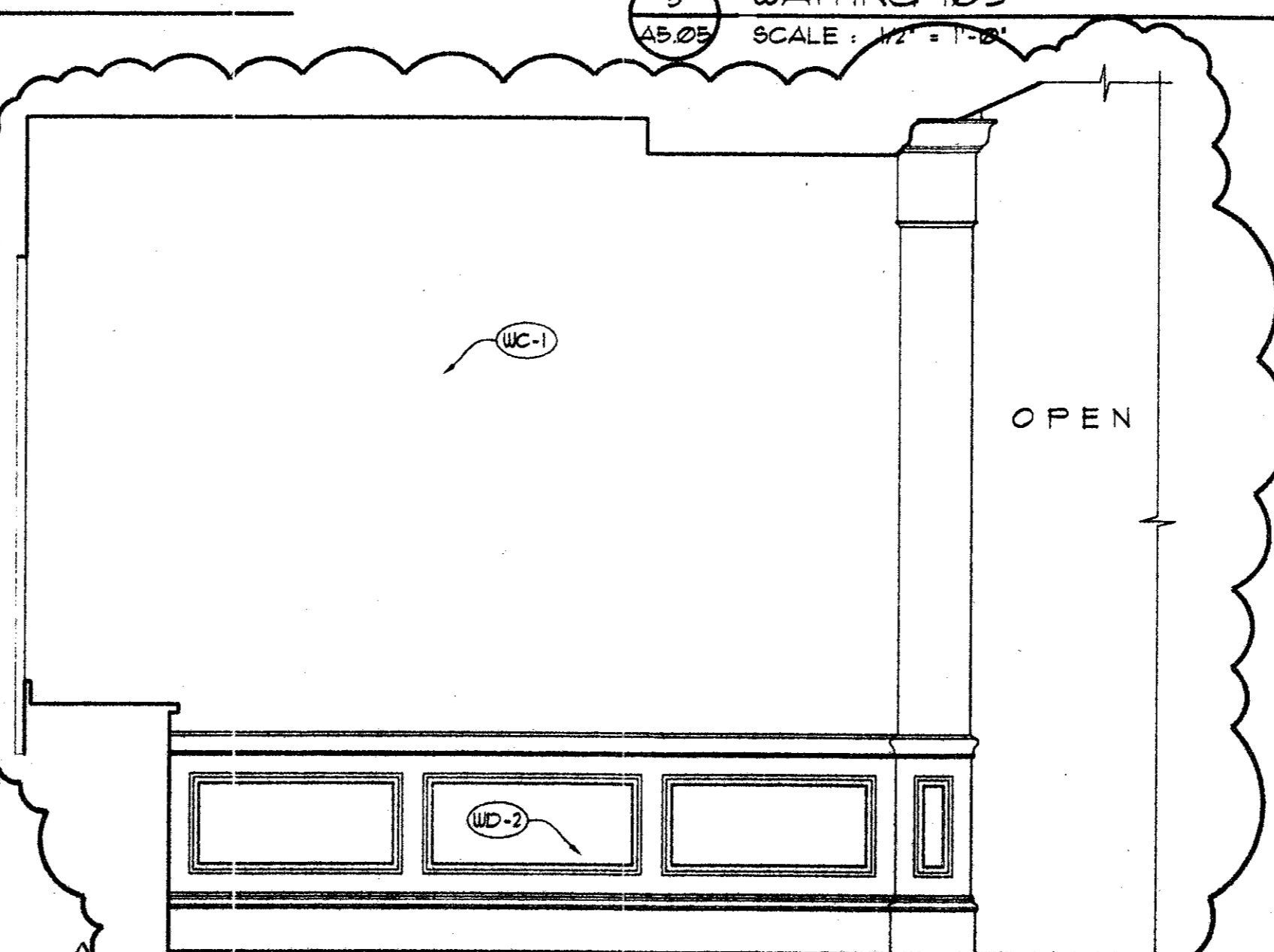
7 HALL 105
A5.05 SCALE: 1/2" = 1'-0"



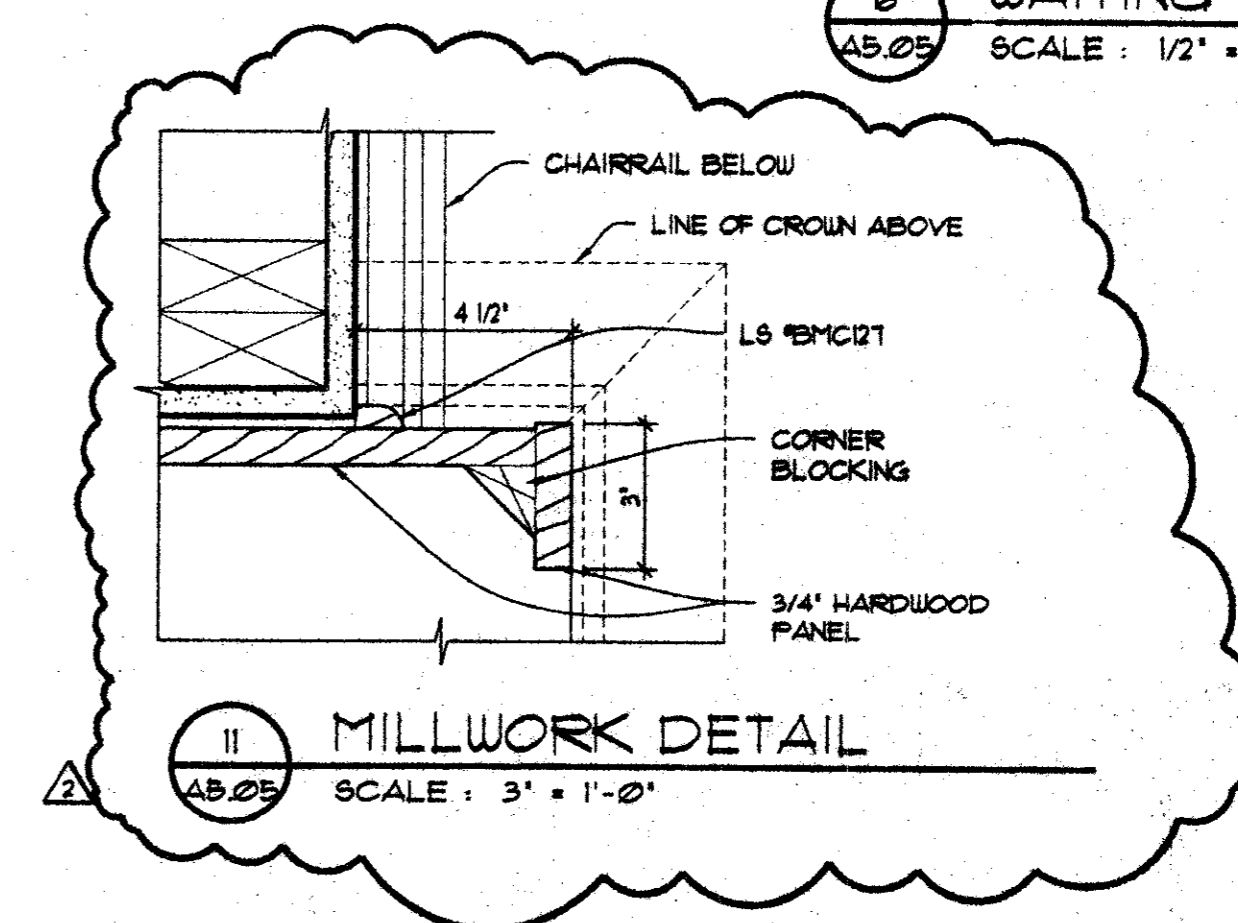
8 HALL 105
A5.05 SCALE: 1/2" = 1'-0"



9 HALL 105
A5.05 SCALE: 1/2" = 1'-0"

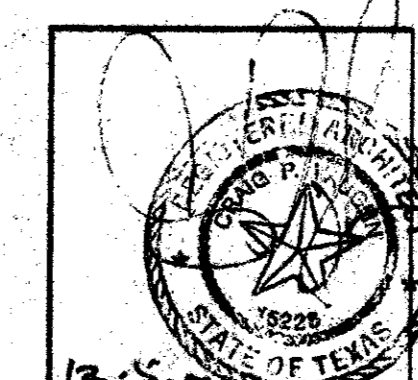


10 TELLER 112
A5.05 SCALE: 1/2" = 1'-0"



11 MILLWORK DETAIL
A5.05 SCALE: 3" = 1'-0"

Copyright 2000 ROBERTS-FORD, L.L.C. Drawing P-1804-ESB - Addison, Texas. Change sheet 14 drawings 1/04/05. Drawn by DSC 04, 2000-11-14 by dms



R-F
ROBERTS-FORD
ARCHITECTURE - INTERIOR DESIGN
2616 THOMAS AVENUE
DALLAS, TEXAS 75204
TELEPHONE (214) 871-9188
FAX (214) 871-9155

LONE STAR BANK
Belwood Parkway East
at Beltline Road
Addison, TX
Project # 1804

7-25-00 ISSUED FOR PERMIT
8-17-00 ISSUE FOR BID
12-05-00 CONST. ISSUE
12-05-00 P.R. #1

A5.05