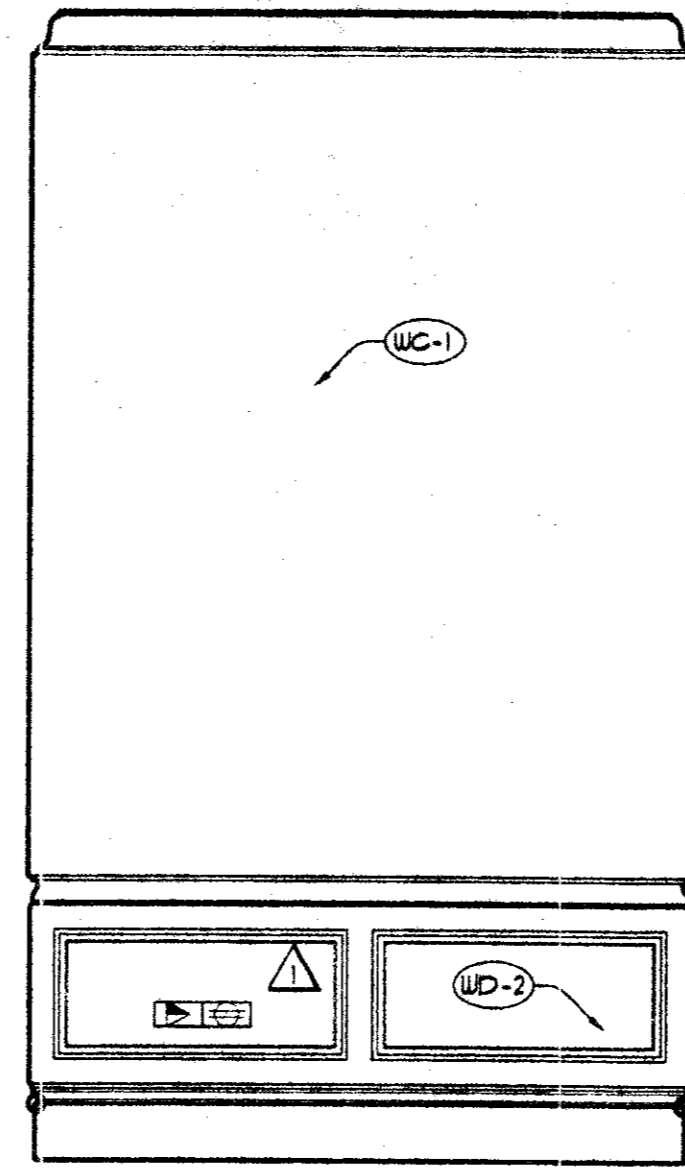
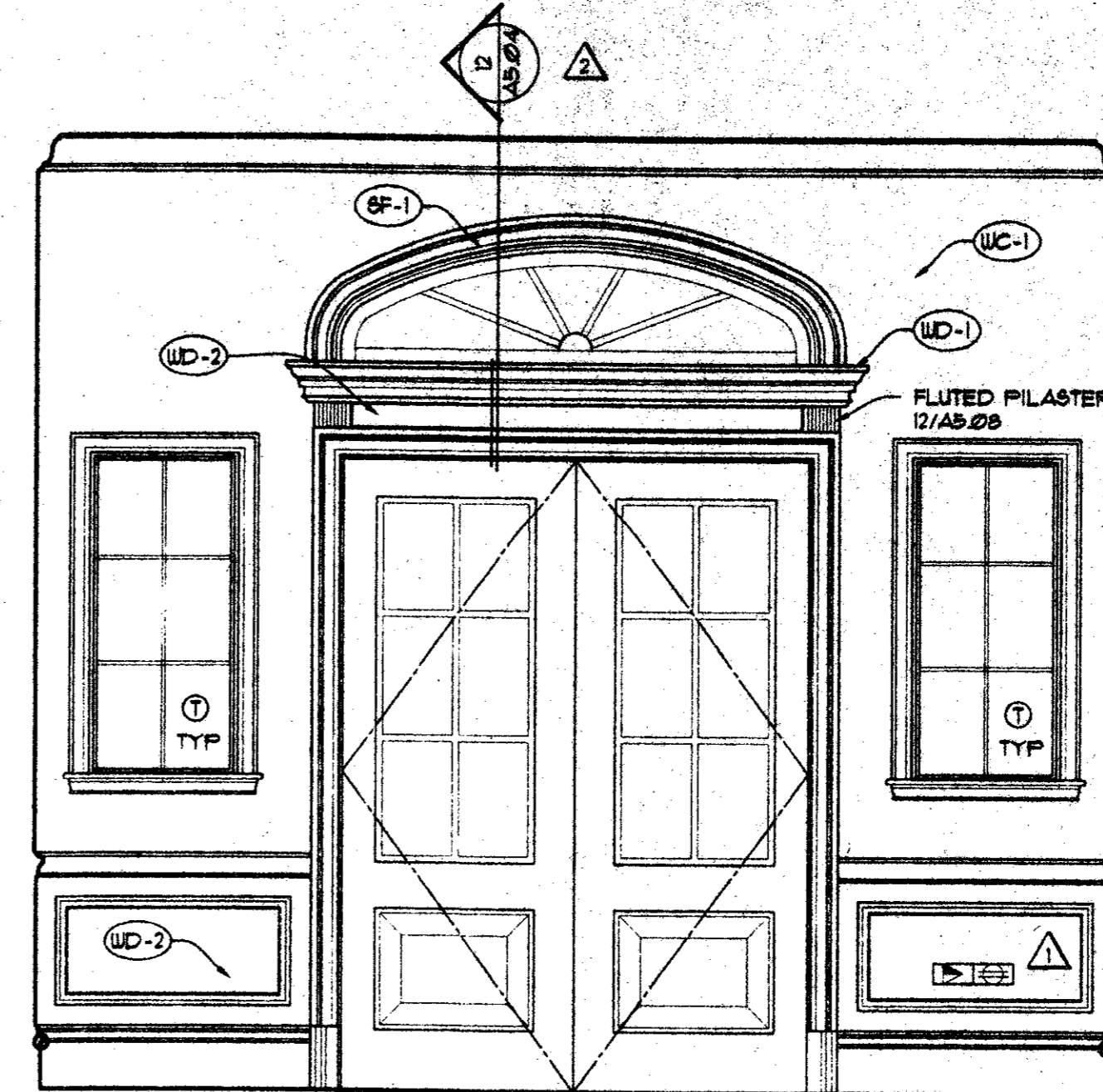


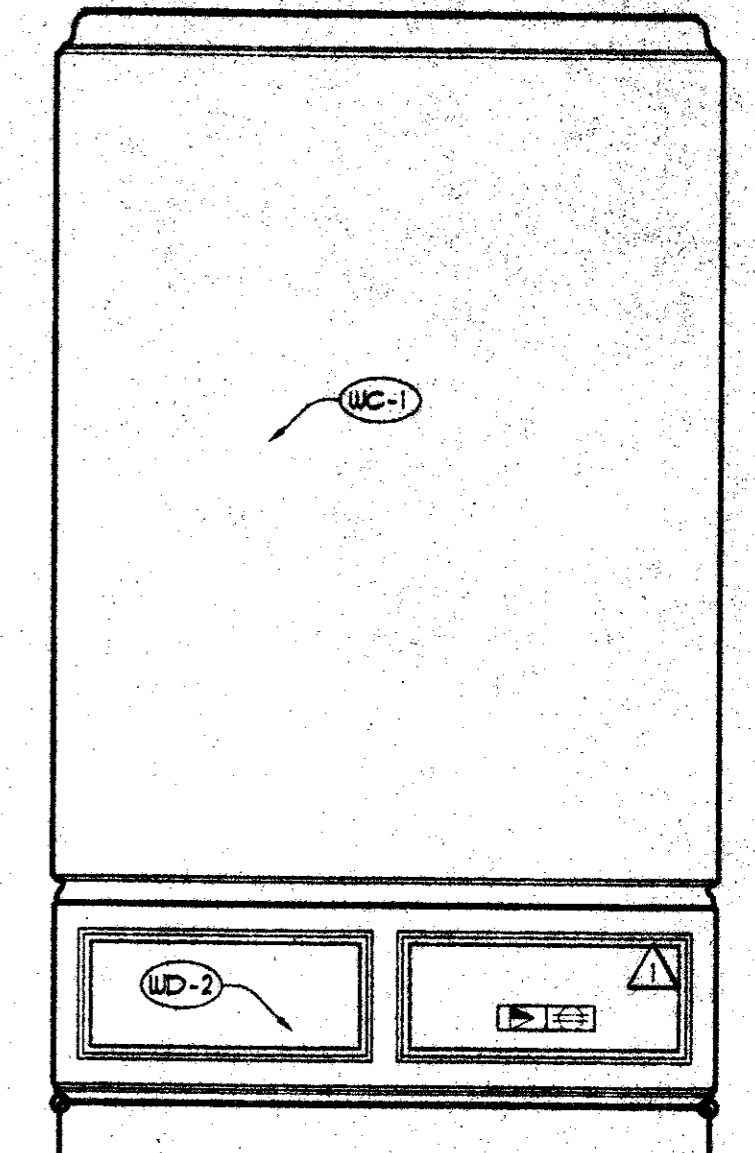
1 WAITING 104
 AB 206 SCALE: 1/2" = 1'-0"



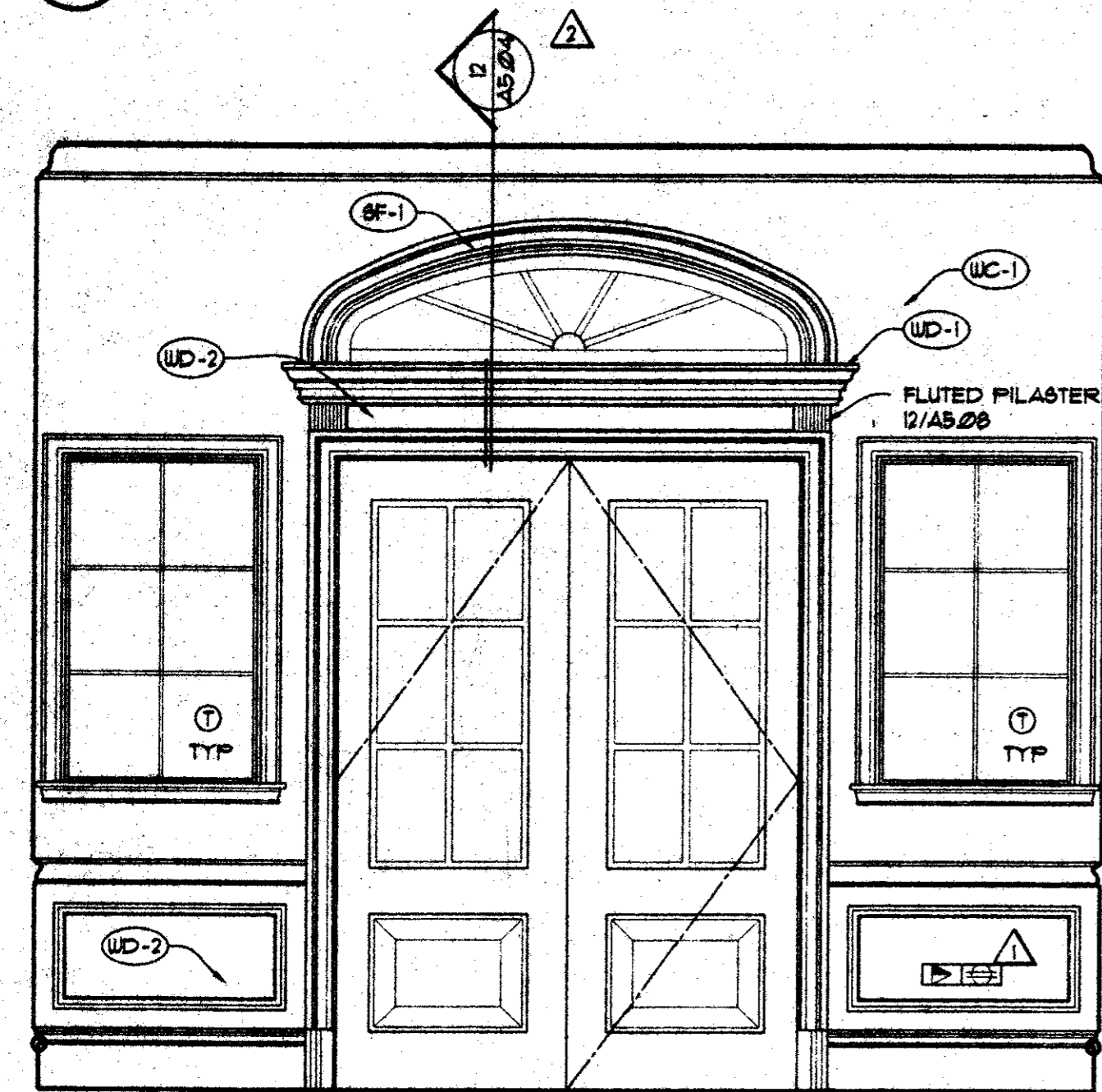
2 VESTIBULE 101
 AB 206 SCALE: 1/2" = 1'-0"



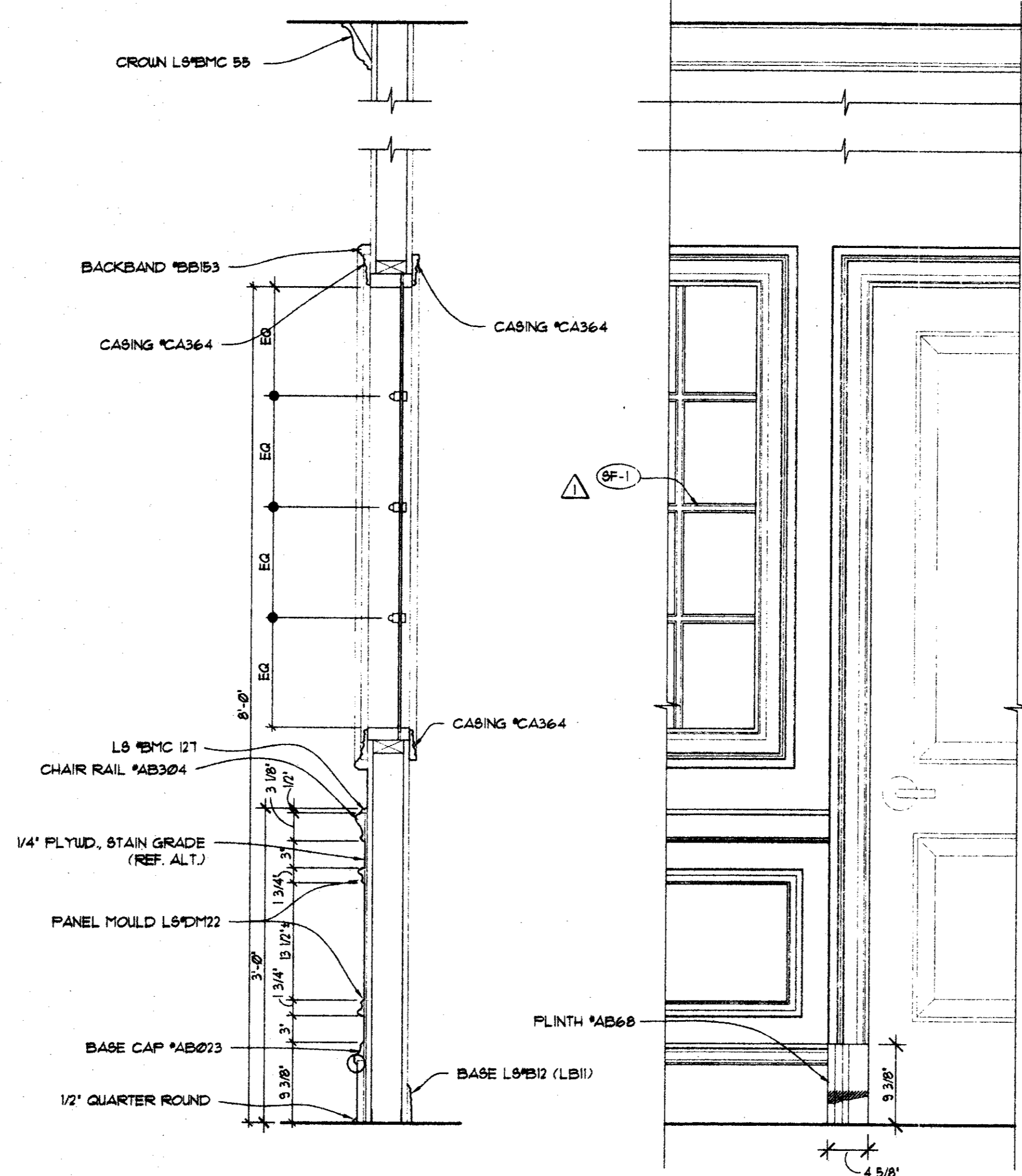
3 VESTIBULE 101
 AB 206 SCALE: 1/2" = 1'-0"



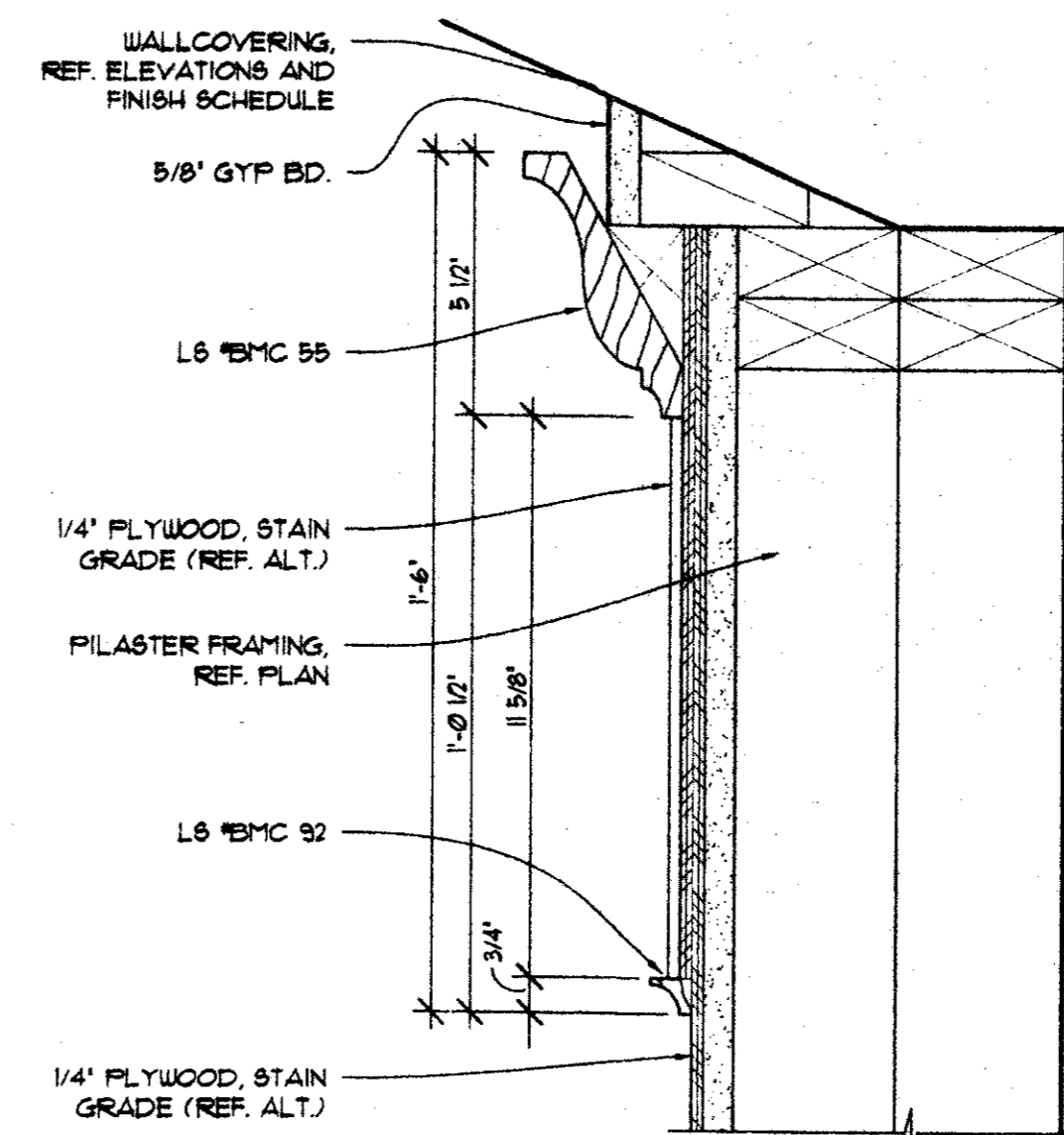
4 WAITING 103
 AB 206 SCALE: 1/2" = 1'-0"



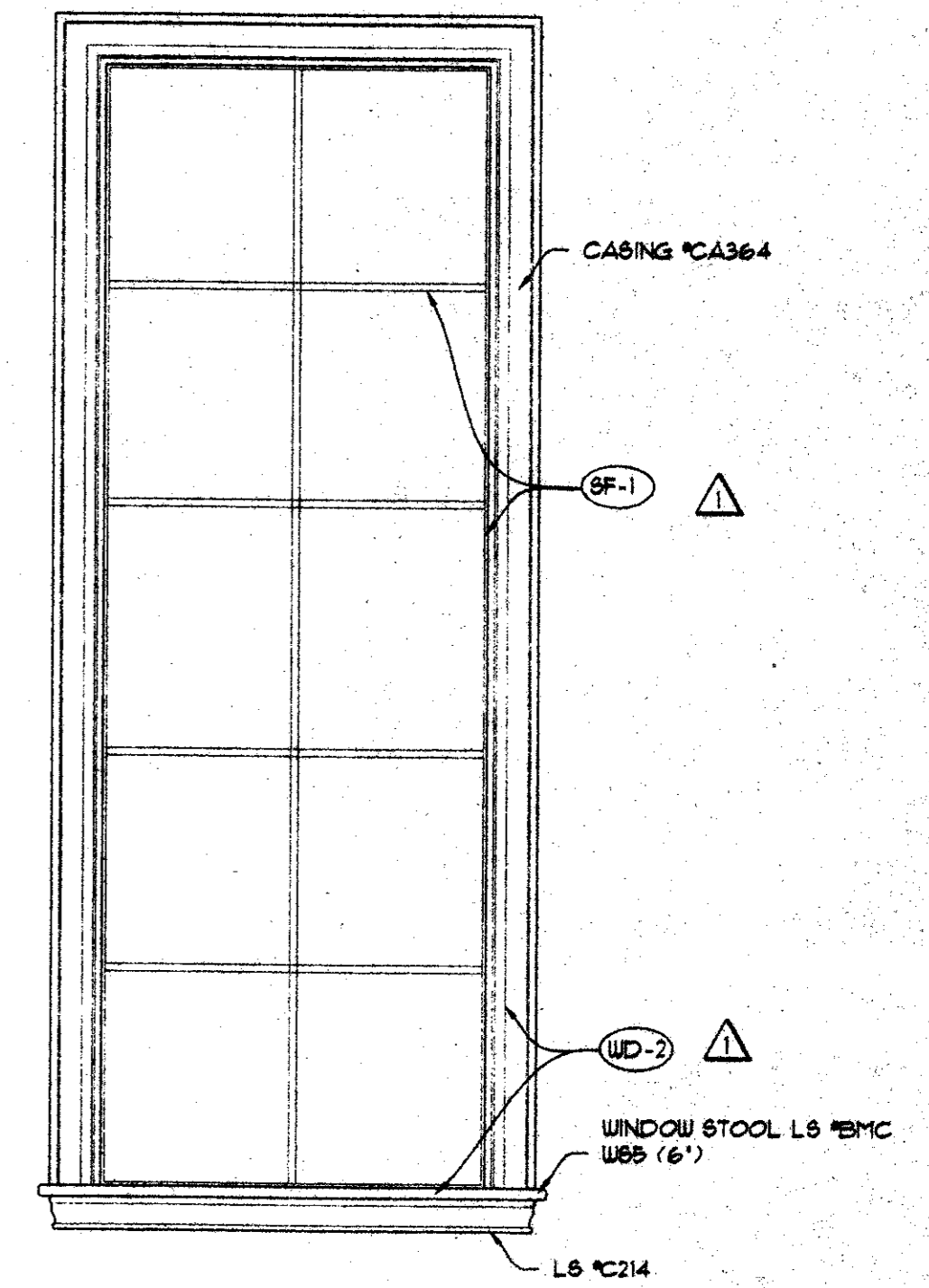
5 VESTIBULE 101
 AB 206 SCALE: 1/2" = 1'-0"



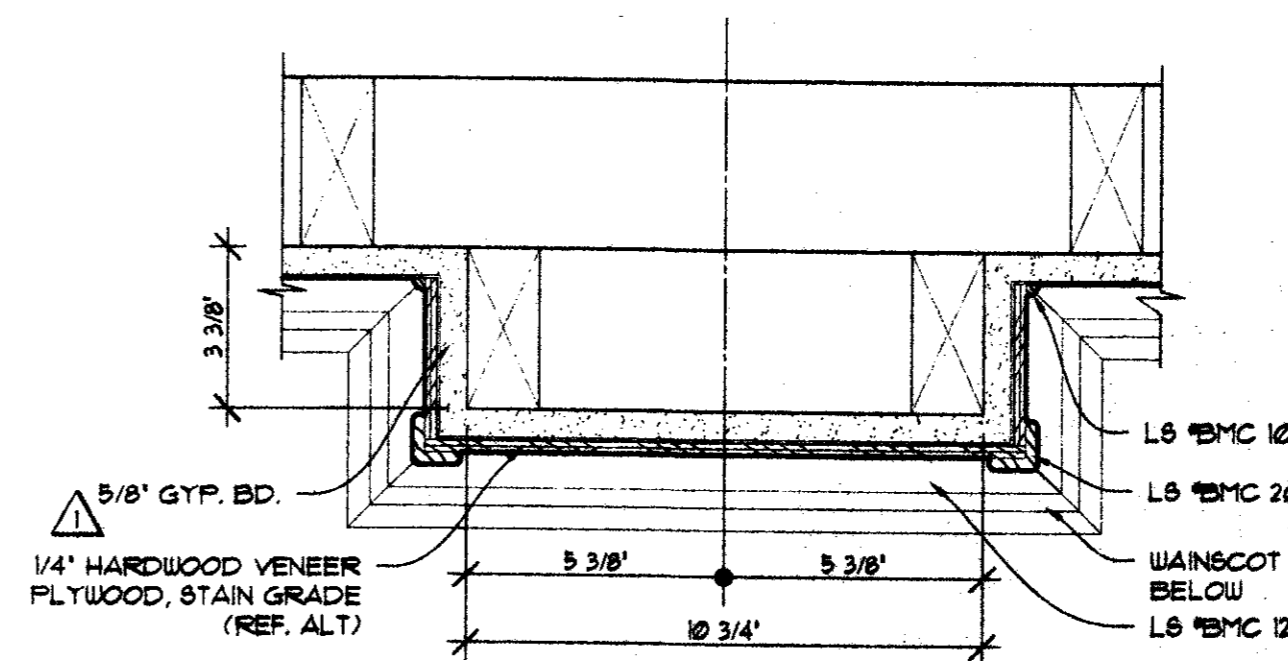
6 WAINSCOT DETAIL
 AB 206 SCALE: 1" = 1'-0"



7 PILASTER DETAIL
 AB 206 SCALE: 3" = 1'-0"

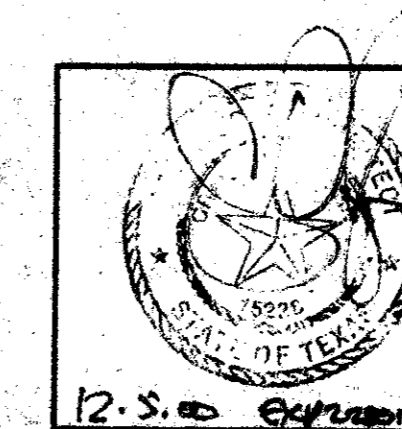


8 TYPICAL-TRIM @ INSIDE OF EXT WINDOWS
 AB 206 SCALE: 1" = 1'-0"



8 PILASTER DETAIL
 AB 206 SCALE: 3" = 1'-0"

Copyright © 2004 ROGERS-FORD ARCHITECTURE - INTERIOR DESIGN, L.L.C.
 Drawing # 1804-1135 - Addition #1804-1135-14 drawings | 1804-1135.dwg at Dec 05, 2004 12:50am by chis



R-F
 ROGERS-FORD
 ARCHITECTURE - INTERIOR DESIGN
 2616 THOMAS AVENUE
 DALLAS, TEXAS 75204
 TELEPHONE (214) 871-0188
 FAX (214) 871-3152

LONE STAR BANK
 Beltwood Parkway East
 at Beltline Road
 Addison, TX
 Project # 1804

7-25-00 ISSUED FOR PERMIT
 8-17-00 ISSUE FOR BID
 12-05-00 CONST. ISSUE
 12-05-00 P.R. #1

A5.06