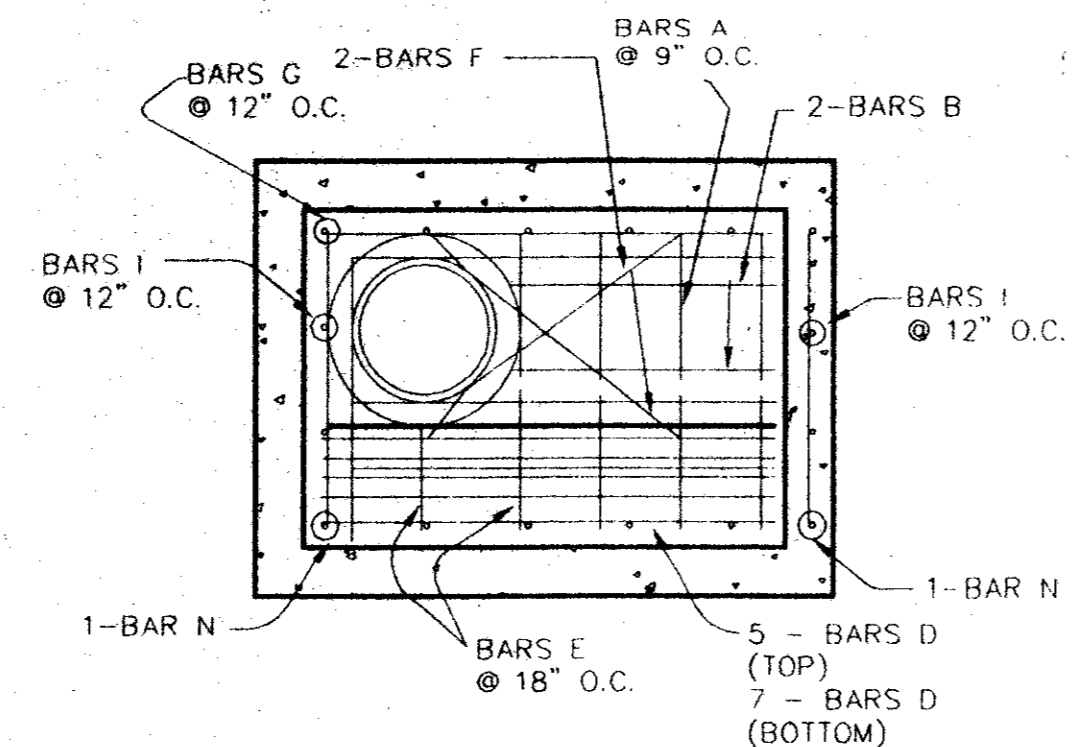
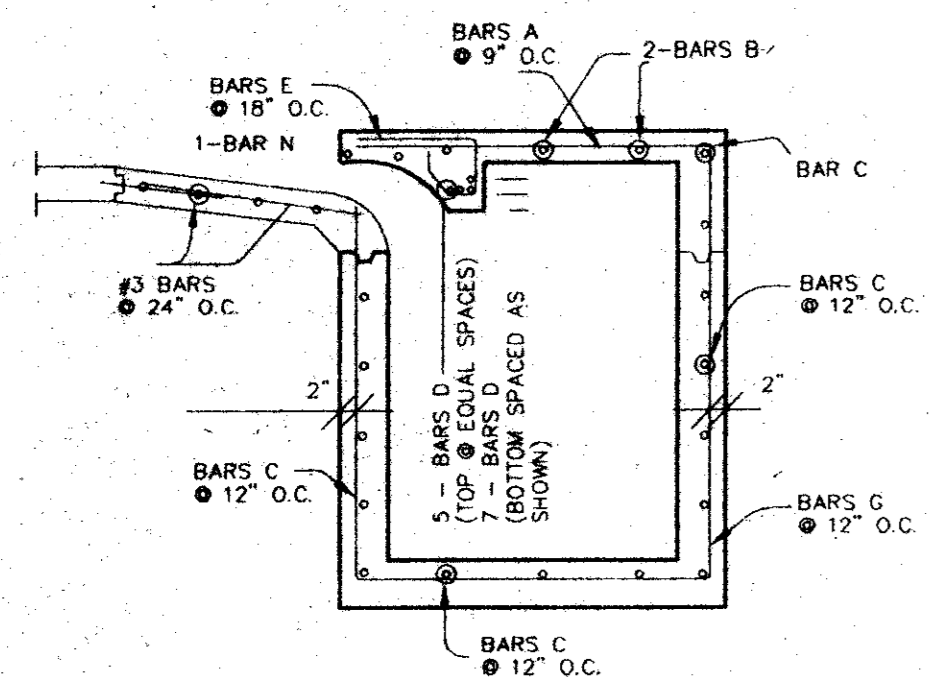


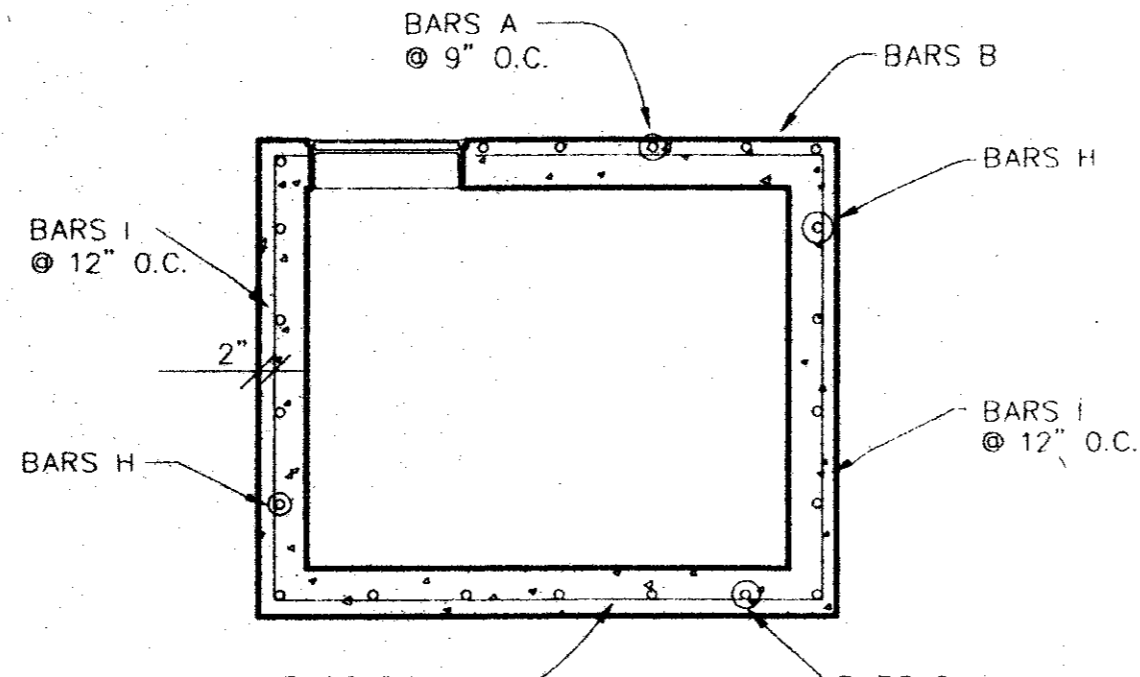
TYPICAL CROSS SECTION



PLAN VIEW



SECTION E-E

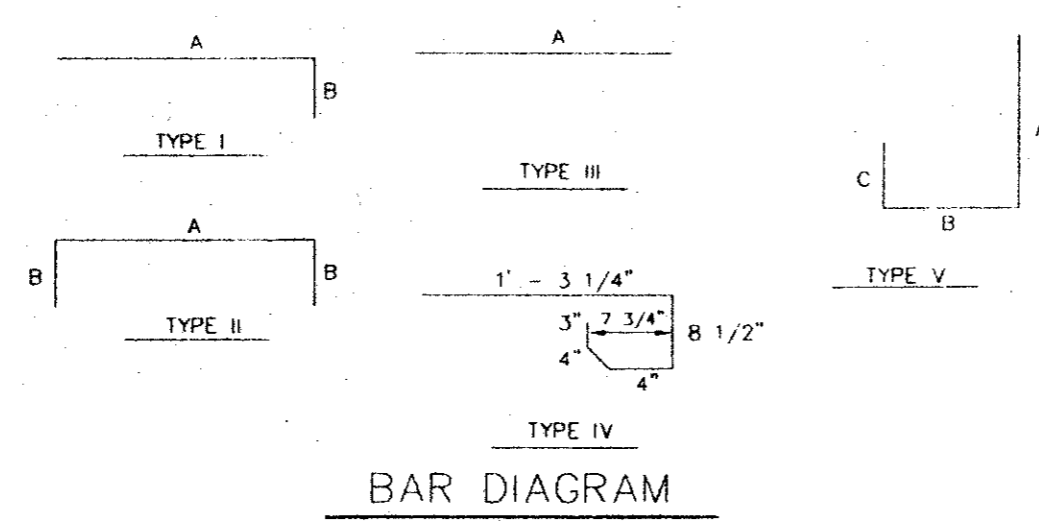


SECTION B-B

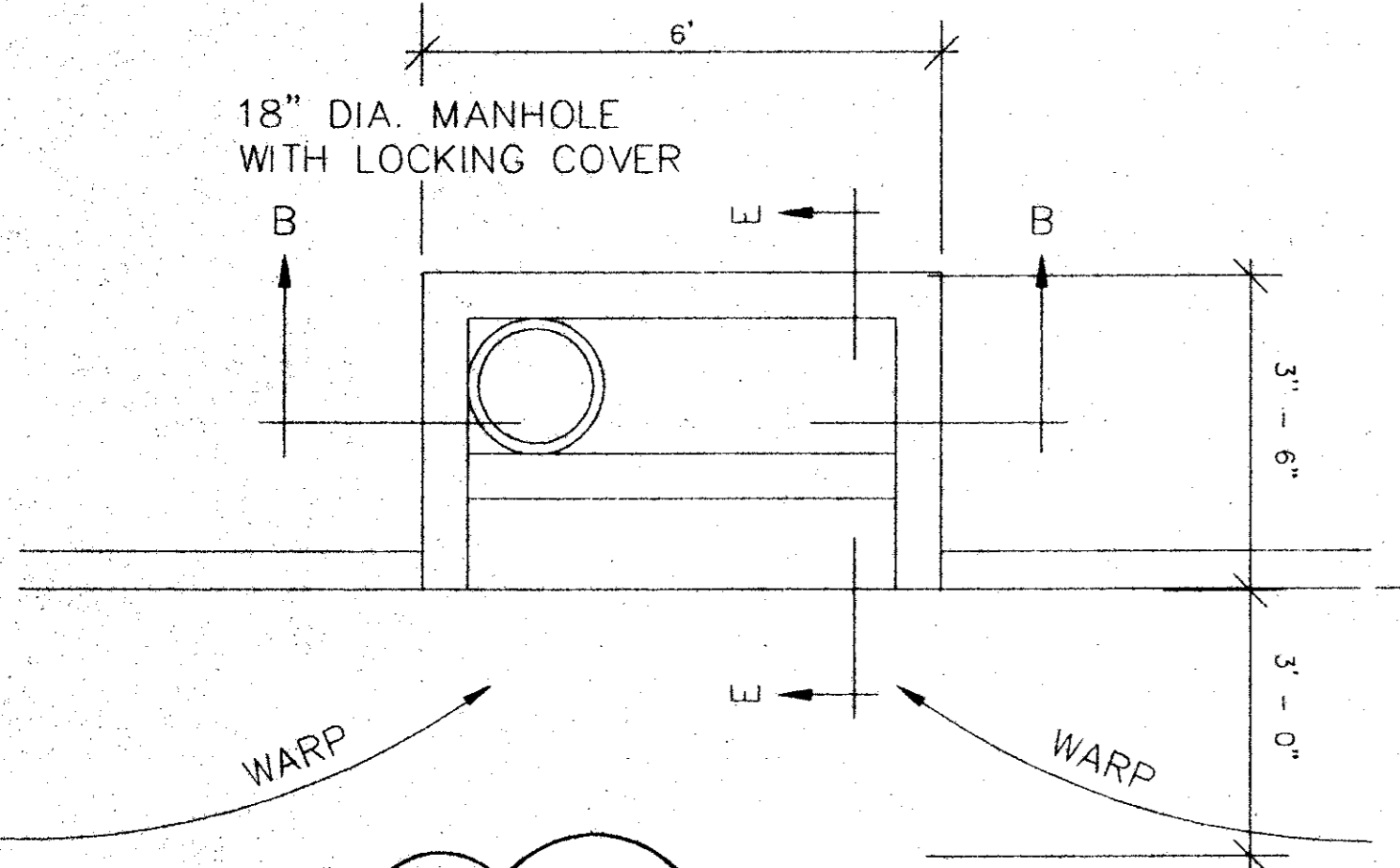
REINFORCING BAR SCHEDULE						
INLET LENGTH	BAR MARK #	BAR DIAGRAM TYPE	BAR SIZE	NUMBER REQUIRED	BAR BENDING DIMENSIONS	
					A	B
5	A	I	#3	5	3'-2"	6"
	B	I	#3	2	3'-8"	6"
	C	II	#4	VARIES	5'-8"	6"
	D	II	#4	12	5'-8"	6"
	E	IV	#3	6	-	-
	F	III	#3	2	4'-0"	-
	G	V	#4	7	3'-2"	4"
	H	III	#4	VARIES	3'-2"	-
	I	III	#4	4	-	-
	N	II	#4	2	1'-6"	-

SEE BAR DIAGRAM FOR DIMENSIONS
LENGTH VARIES DUE TO DEPTH OF INLET

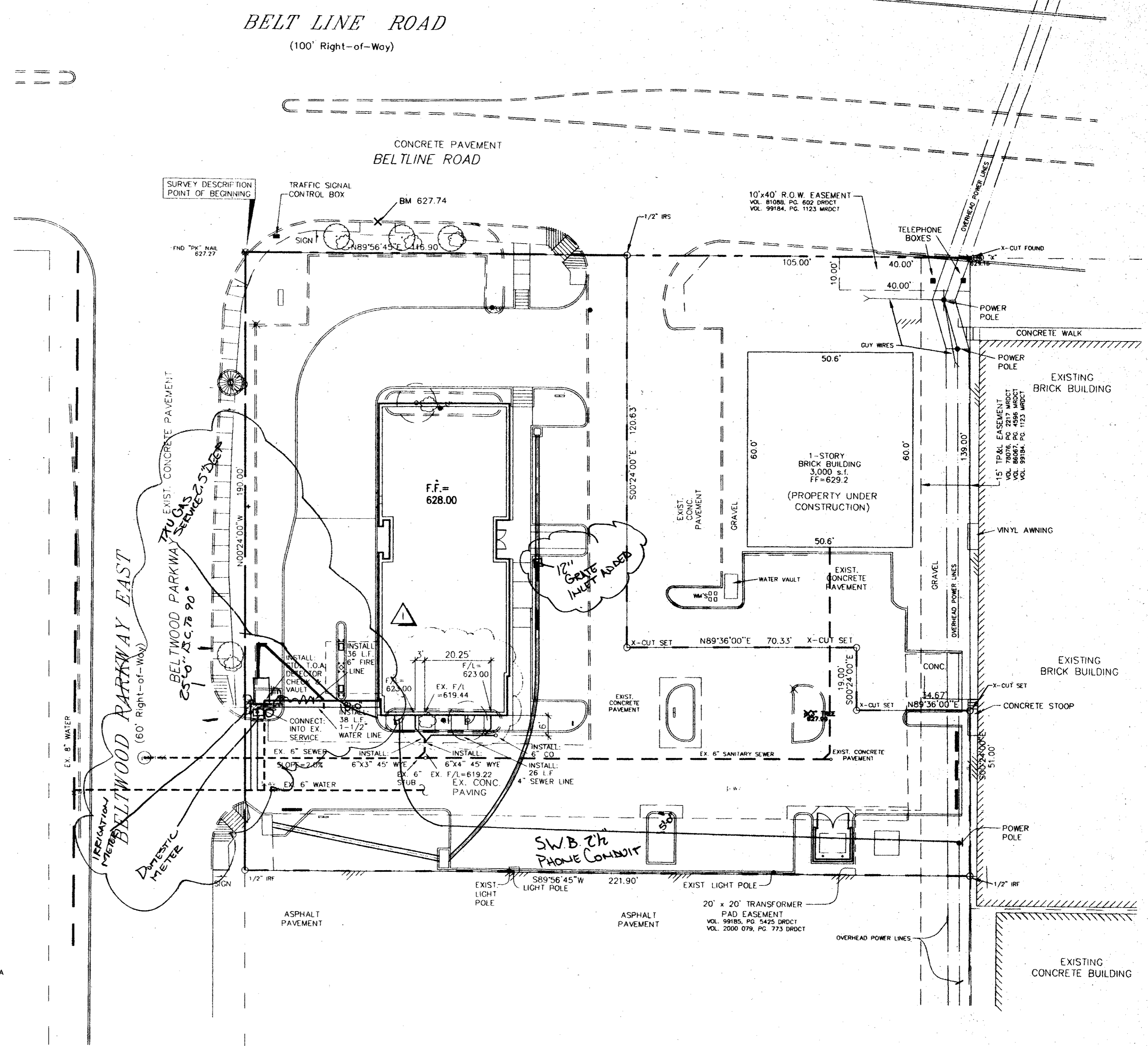
CURB INLET REINFORCING



BAR DIAGRAM



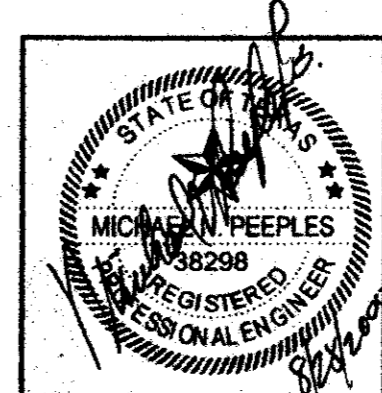
5 FOOT CURB INLET



UTILITY PLAN
SCALE: 1" = 20'-0"



MICHAEL PEEPLES
ENGINEERS & PLANNERS
254 TARPLEY ROAD, #118 - CARROLLTON, TX 75006
972-416-1968 (TEL) 972-416-5289 (FAX)



R-F
ROGERS - FORD
ARCHITECTURE - INTERIOR DESIGN
2616 THOMAS AVENUE
DALLAS, TEXAS 75204
TELEPHONE (214) 871-9388
FAX (214) 871-3155

LONE STAR BANK
4650 BELTLINE ROAD
at Bellwood Parkway East
ADDISON, TX.
Project # 1804

07-25-00 ISSUE FOR PERMIT
08/17/2000 ISSUE FOR BID
08/25/2000 ADDENDUM #1
12/5/2000 CORRECT. ISSUE

CE-2

UTILITY PLAN

Copyright 2000 ROGERS-FORD, L.C. Showing P. AutoCad Drawing Files (Rogers-Ford Arch) Lone Star Bank (BELTLINE ROAD) Aug. 27, 2000. 4:00pm by MICHAEL PEEPLES