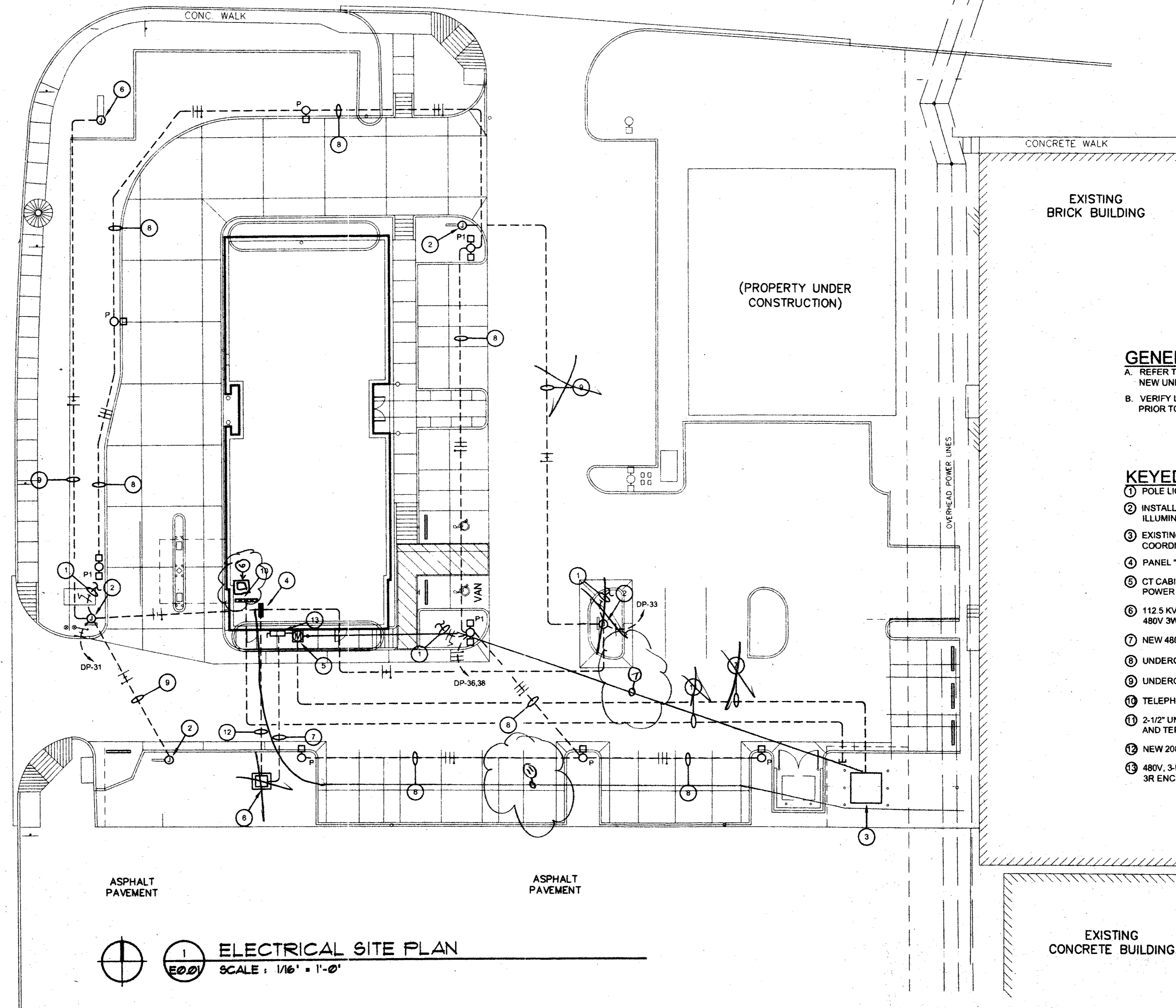


UNDERGROUND CONDUIT DETAIL

SCALE: NONE

BELT LINE ROAD

BELTWOOD PARKWAY EAST



GENERAL NOTES:

- A. REFER TO MECHANICAL SITE PLAN FOR LOCATION OF ADDITIONAL NEW UNDERGROUND UTILITIES TO FACILITY.
- B. VERIFY LOCATION OF ALL NEW AND EXISTING UNDERGROUND UTILITIES PRIOR TO BEGINNING ANY EXCAVATION.

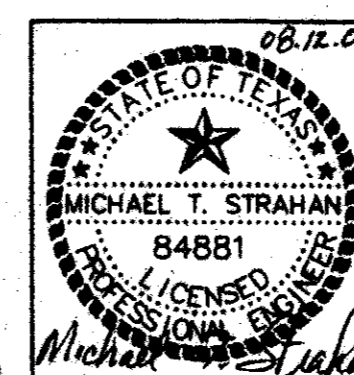
KEYED NOTES:

- 1 POLE LIGHT TO BE CONTROLLED BY PHOTOCELL ON ROOF.
- 2 INSTALL GRADE LEVEL J-BOX FOR CONNECTION TO NEW ILLUMINATED SIGN.
- 3 EXISTING 480Y/277 PAD MOUNTED TRANSFORMER TO REMAIN. COORDINATE FINAL CONNECTIONS.
- 4 PANEL "DP".
- 5 CT CABINET AND METER BASE BY CONTRACTOR. INSTRUMENT BY POWER CO. VERIFY EXACT REQUIREMENTS WITH POWER CO.
- 6 112.5 KVA DRY-TYPE TRANSFORMER IN WEATHER PROOF ENCLOSURE. 480V 3W PRIMARY / 208Y/120 3PH 4W SECONDARY.
- 7 NEW 480 UNDERGROUND SECONDARY.
- 8 UNDERGROUND LIGHTING CIRCUIT.
- 9 UNDERGROUND ILLUMINATED SIGN CIRCUIT.
- 10 TELEPHONE BACKBOARD.
- 11 2-1/2" UNDERGROUND TELEPHONE CONDUIT. VERIFY ROUTING AND TERMINATION POINT WITH TELEPHONE CO.
- 12 NEW 208V UNDERGROUND SECONDARY.
- 13 480V, 3-POLE, 200 AMP MAIN SERVICE DISCONNECT IN NEMA 3R ENCLOSURE. FUSE AT 175 AMPS.

ELECTRICAL SITE PLAN
SCALE: 1/16" = 1'-0"

VOICE: 806.780.7475 CELL: 806.777.7775
FAX: 806.780.0129 EMAIL: mtspe@door.net

STRAHAN ENGINEERING
4601 50TH STREET SUITE 212
LUBBOCK, TEXAS 79414



R-F
ROGERS - FORD
ARCHITECTURE - INTERIOR DESIGN
2616 THOMAS AVENUE
DALLAS, TEXAS 75204
TELEPHONE (214) 871-9388
FAX (214) 871-3155

LONE STAR BANK
Belwood Parkway East
at Beltline Road
Addison, TX
Project # 1804

8-17-2000 ISSUED FOR BID
12-5-2000 CORRECT. ISSUE

E0.01

ELECTRICAL SITE PLAN