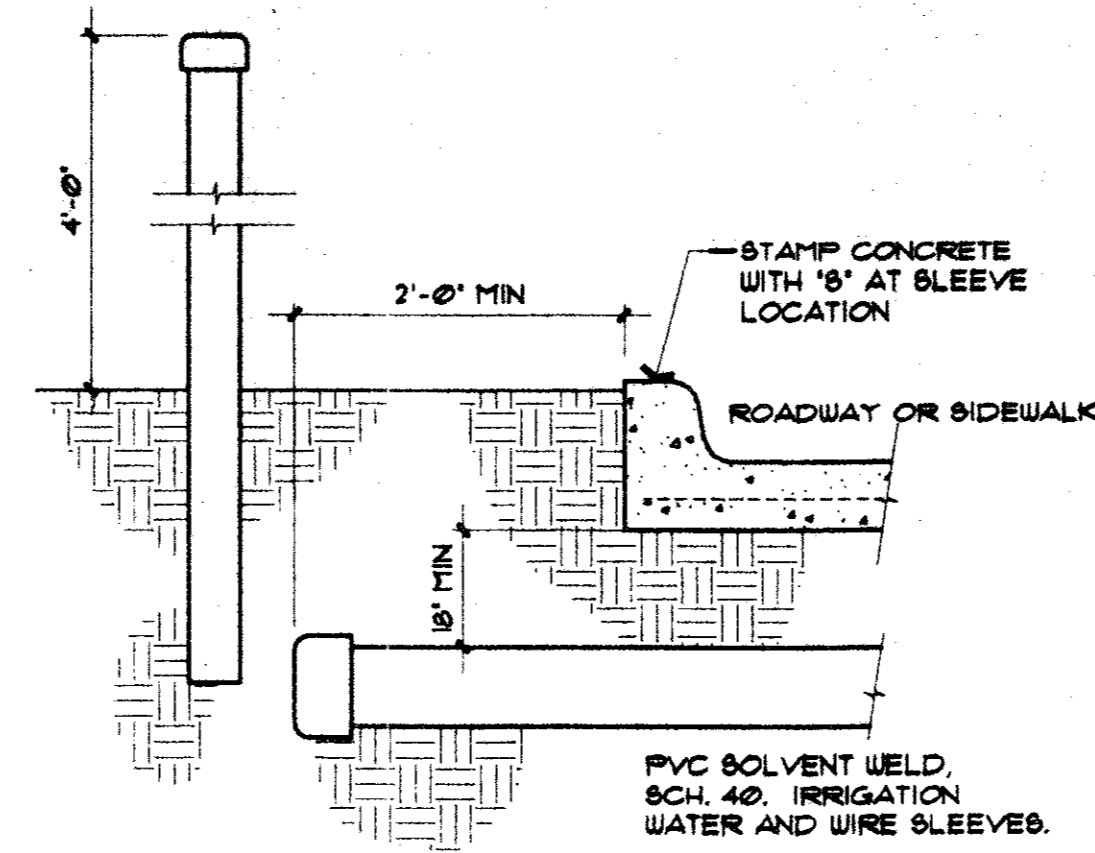
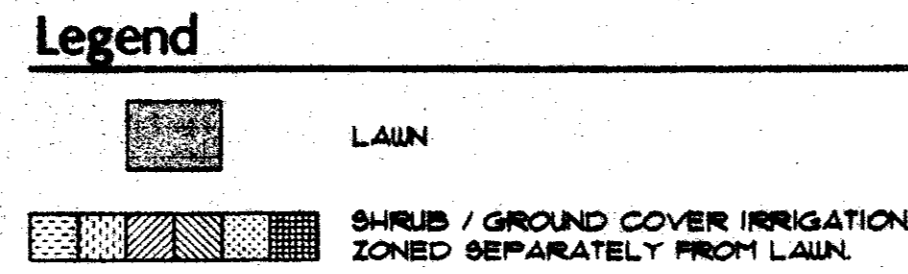
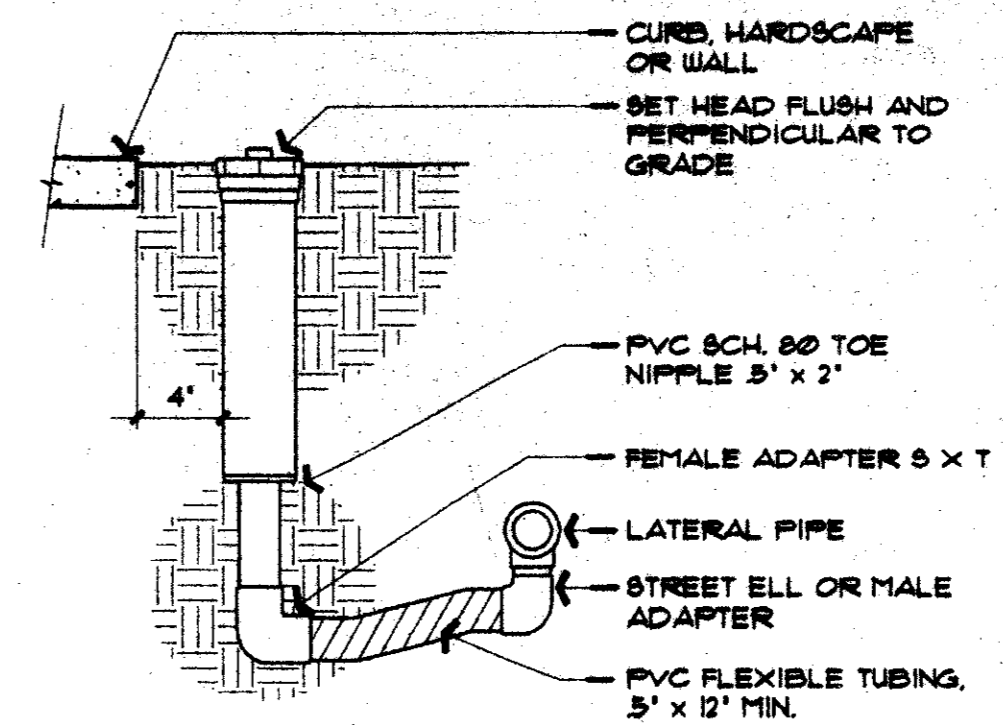


**Irrigation General Notes**

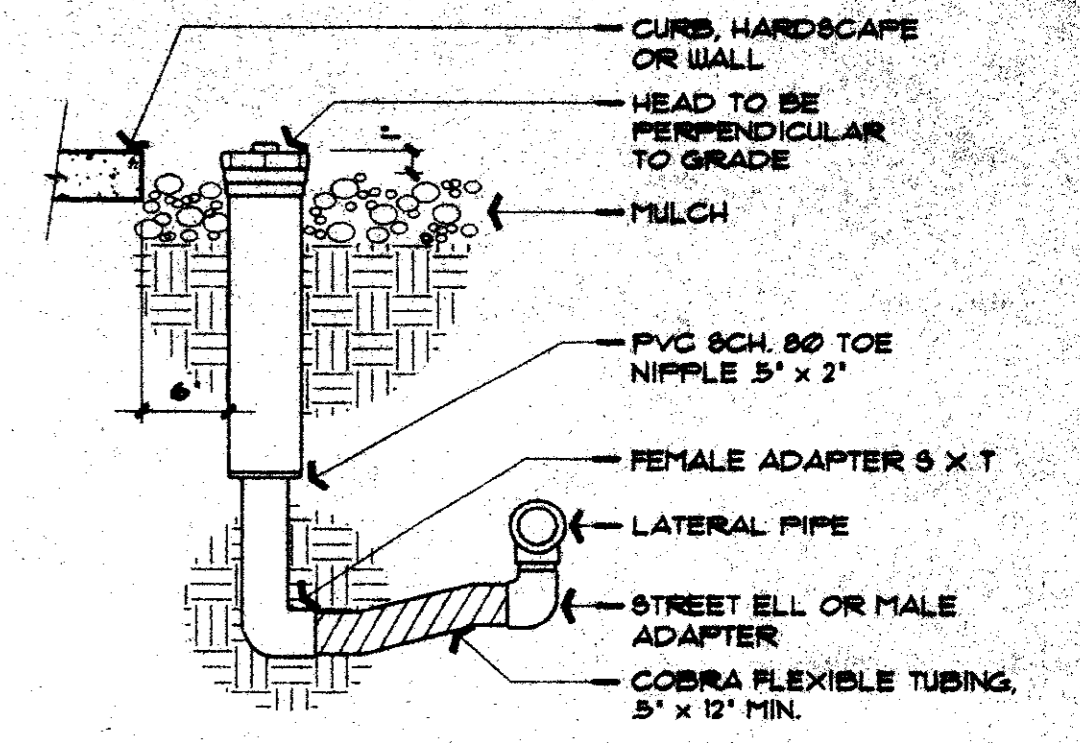
1. See Section 02810 - Irrigation System for description and product information.
2. All lawn, shrub/groundcover, pressure compensating tree bubblers and seasonal color must be zoned separately.
3. See Civil Engineering and Detailed paving drawing for sleeve and meter location.
4. Irrigation controller to be building mounted. See plan.
5. Irrigation coverage shall be 100% in the areas to be irrigated.
6. The irrigation sub-contractor is required to prepare an irrigation plan. The plan must be reviewed and approved by the Landscape Architect prior to installation. Any work installed prior to an approved plan is subject to rejection.
7. No irrigation head or valve shall be within three (3) feet of a water utility.
8. No sprinkler heads or irrigation line shall be installed within one foot six inches (1'-6") from drive pavement.
9. All mainlines three (3) feet from back of the curb (except for major intersections).
10. Over spray within the right-of-way is prohibited.
11. Verify a static water pressure of 60 psi at the point of connection before start of installation. If lower, notify the landscape architect or owner's representative for instructions. Failure to do so will result in the contractor liable for all expenses in making the system operational.
12. All piping shall be flushed of all debris prior to installing heads and nozzles.
13. No wire splices will be allowed between the controller and the solenoid valves. The valve "common" wire shall be spliced only at the solenoid valve and within the valve boxes.
14. Contractor to arrange valve boxes in a straight line and evenly spaced apart (2') and at no time closer than 3' from any hardscape.



**Irrigation Service Sleeves**  
NTS

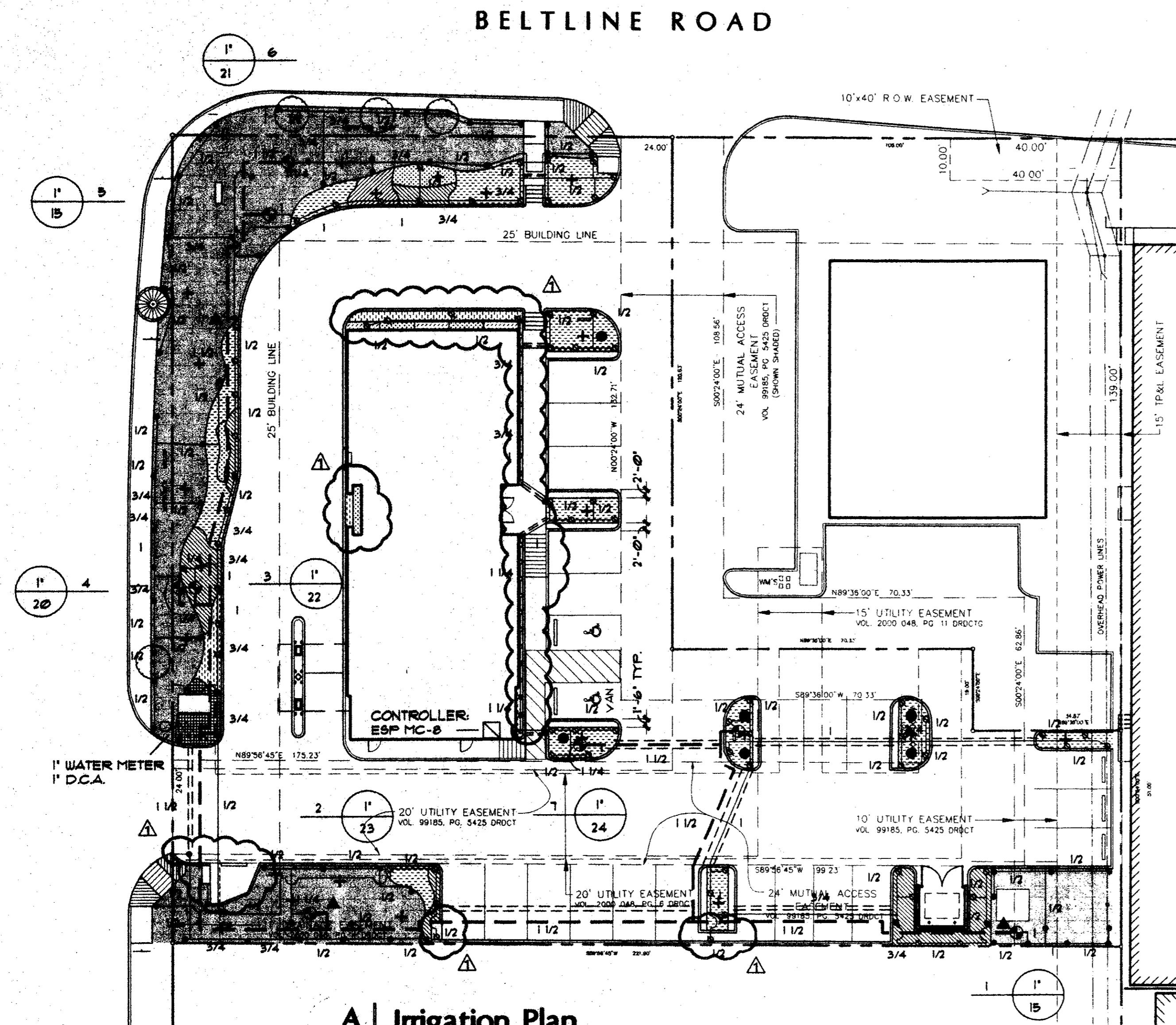


**Turf Spray**  
NTS



**High Rise Shrub Spray**  
NTS

BELTWOOD PARKWAY EAST

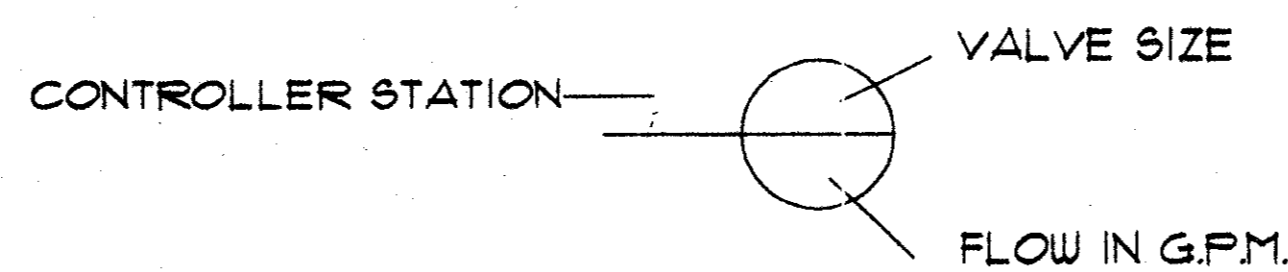


**A Irrigation Plan**  
scale: 1" = 20'-0"

**LEGEND**

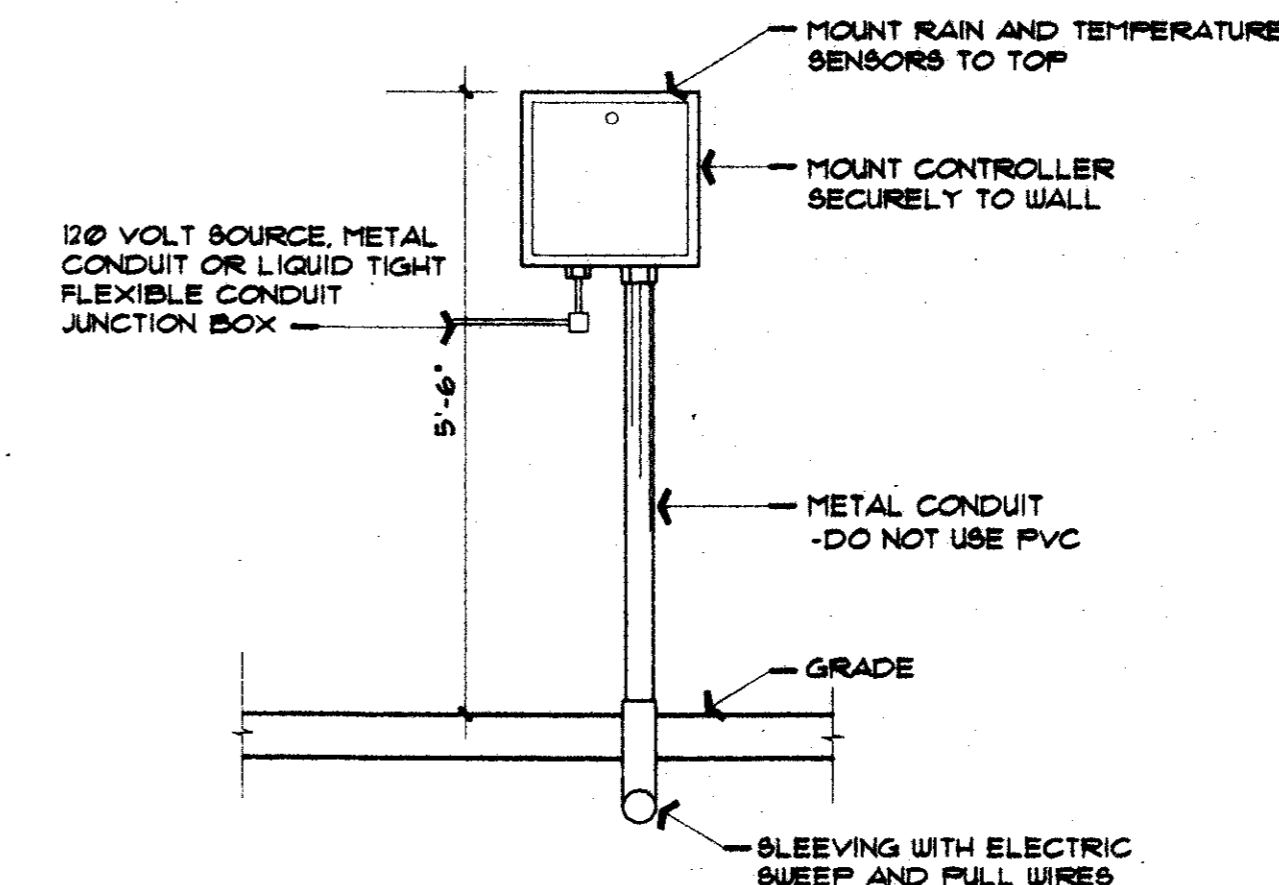
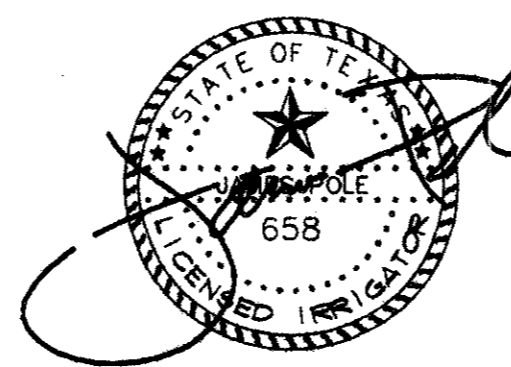
- RAINBIRD #1401 PRESSURE COMPENSATING BUBBLER NOZZLE ON SCH. 80 RISER 2' ABOVE GRADE.
- RAINBIRD #1024 POP UP SPRAY HEAD WITH MPR NOZZLE AS NOTED BELOW
- RAINBIRD #1012 POP UP SPRAY HEAD WITH MPR NOZZLE AS NOTED BELOW
- RAINBIRD FEB SERIES ELECTRIC REMOTE CONTROL VALVE
- RAINBIRD #3RC QUICK COUPLING VALVE
- FEBCO 805Y 1" D.C.A. INSTALLED PER CITY CODE
- 1" IRRIGATION WATER METER AND TAP
- RAINBIRD ESPFX SERIES AUTOMATIC CONTROLLER WITH PENN A-19 FREEZE SENSOR AND MINI-CLICK RAIN SENSOR
- CLASS 200 PVC MAINLINE PIPE
- CLASS 200 ( EXCEPT 1/2 INCH 3/4 ) PVC LATERAL PIPE
- CLASS 200, 4" PVC SLEEVE PIPES

CONTRACTOR SHALL SELECT MPR SERIES SPRAY NOZZLES FOR 'HEAD-TO-HEAD' COVERAGE, ADJUSTED FOR MINIMUM OVERSPRAY ONTO WALLS AND WALKS. NO OVERSPRAY INTO STREETS IS PERMITTED.

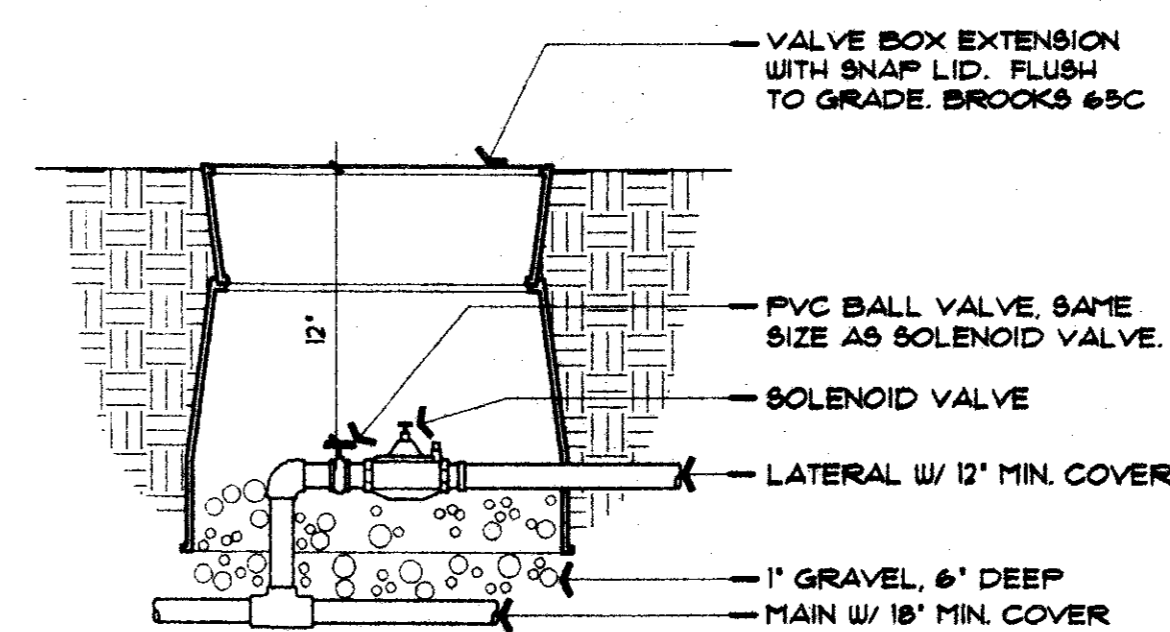


**James Pole**  
LANDSCAPE IRRIGATION SPECIALIST

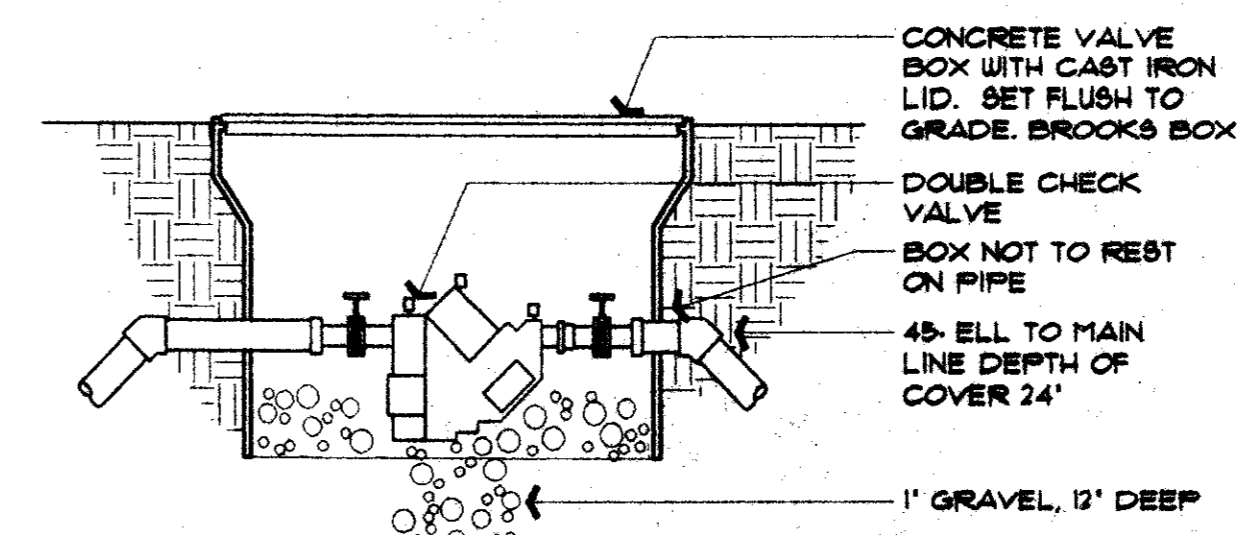
CONSULTING, DESIGN, SPECIFICATIONS  
TEXAS LICENSED IRRIGATOR #658



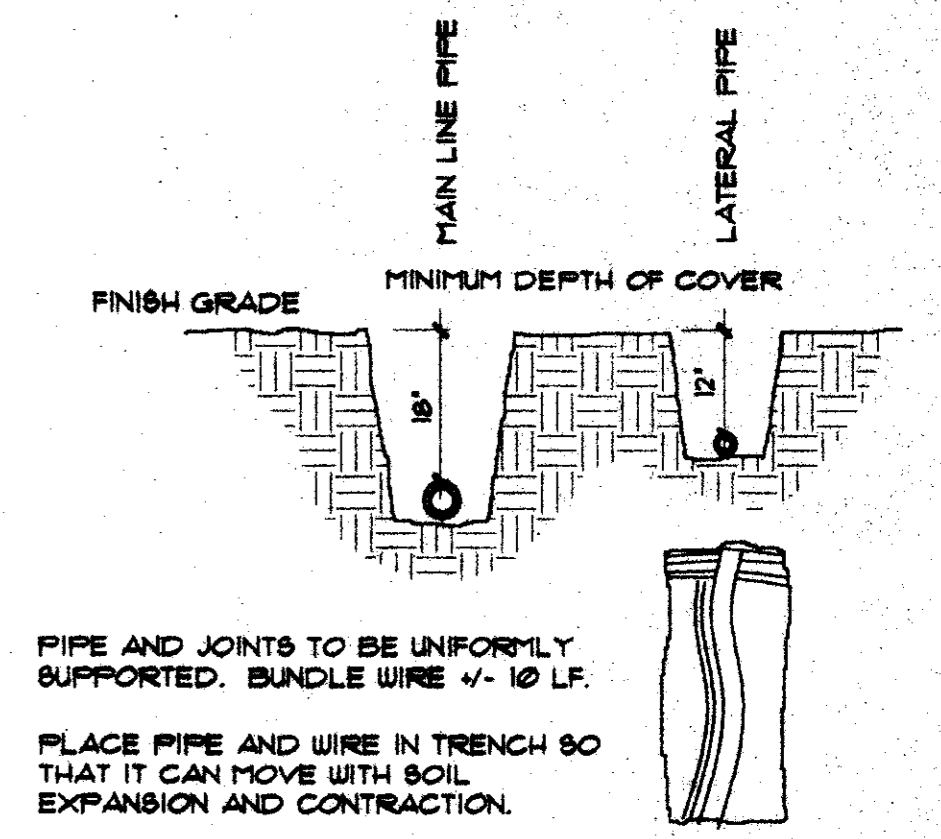
**Wall Mounted Controller**  
NTS



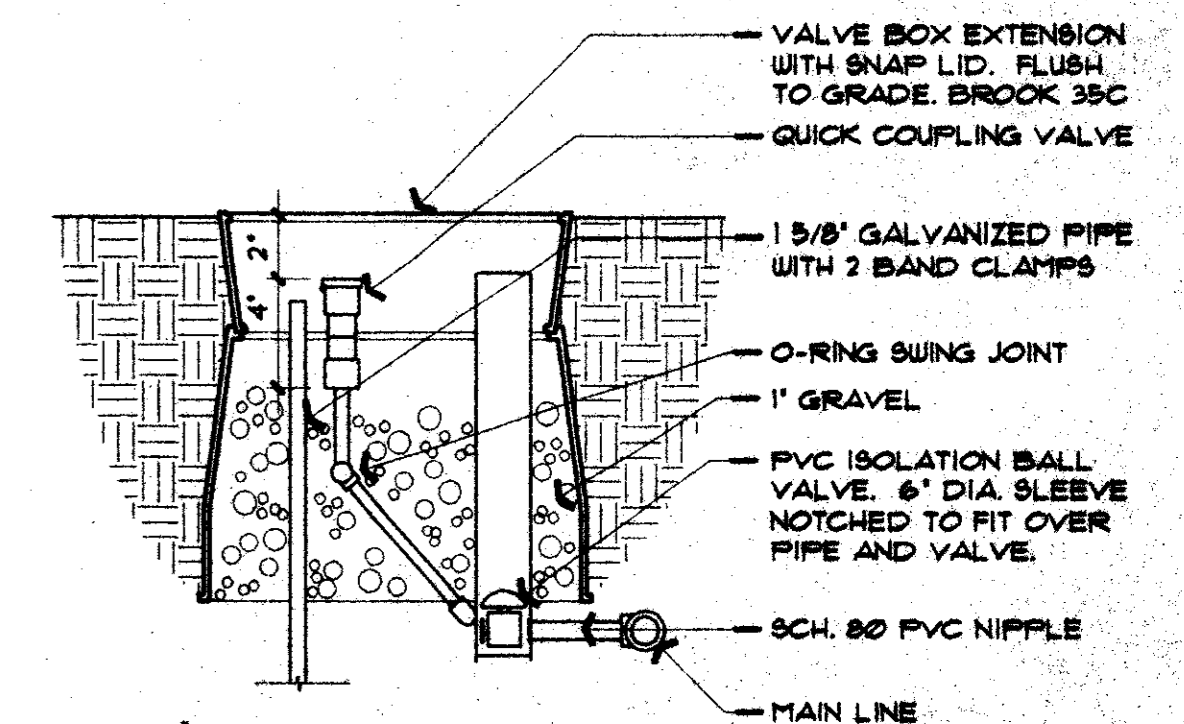
**Solenoid Valve**  
NTS



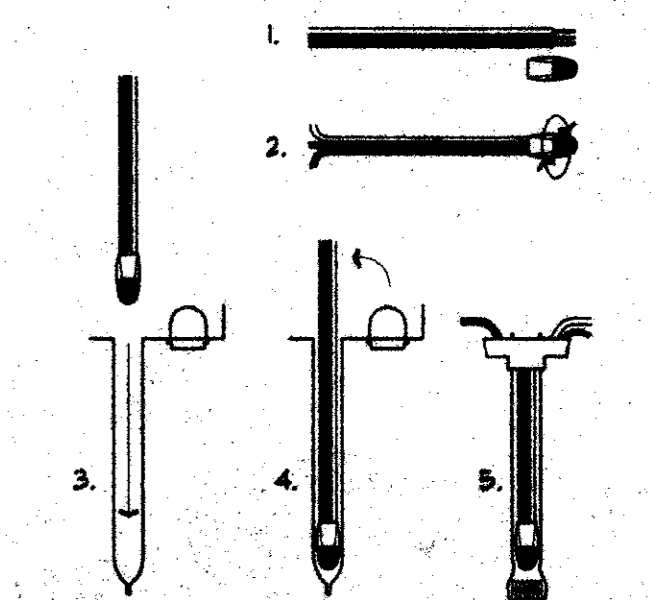
**Double Check Valve Assembly**  
NTS



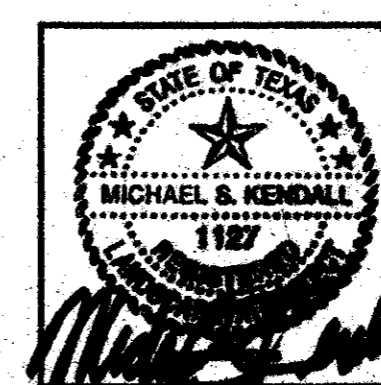
**Trench Depth**  
NTS



**Quick Coupling Valve**  
NTS



**24 Volt Wire Connections**  
NTS



**R-F**  
ROBERTS - FORD  
ARCHITECTURE - INTERIOR DESIGN  
2615 THOMAS AVENUE  
DALLAS, TEXAS 75204  
TELEPHONE (214) 871-9388  
FAX (214) 871-8155

**LONE STAR BANK**  
Beltwood Parkway East  
at Beltline Road  
Addison, Texas  
Project # 1804

08/17/00 - Issued for Bid  
09/01/00  
12/05/00 CONST. ISSUE

**L2**

Lone Star Bank - Addison