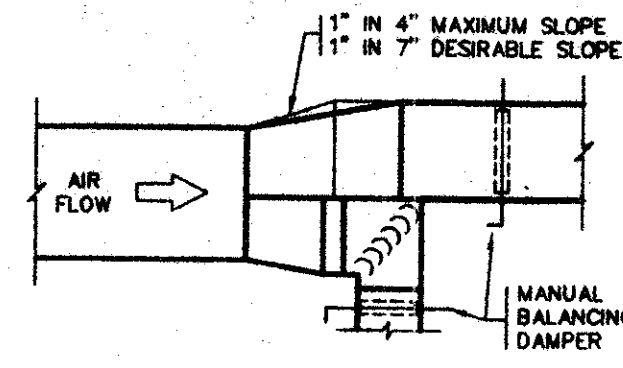
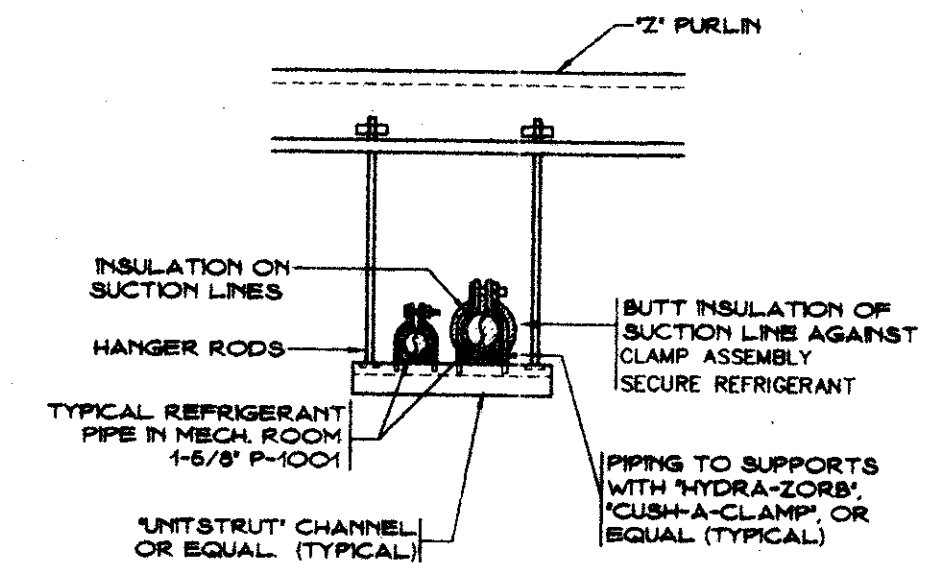


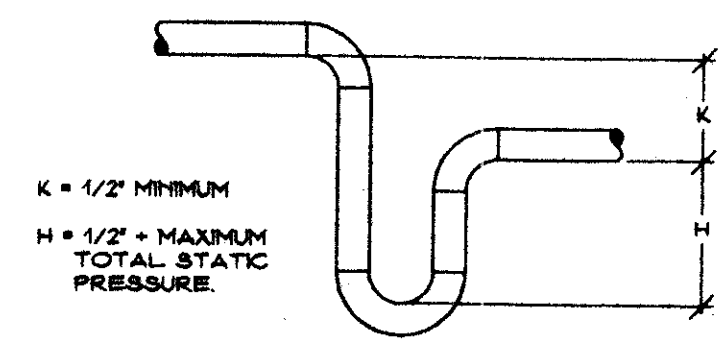
**SUPPLY AIR DIFFUSER MOUNTING DETAIL**  
NO SCALE



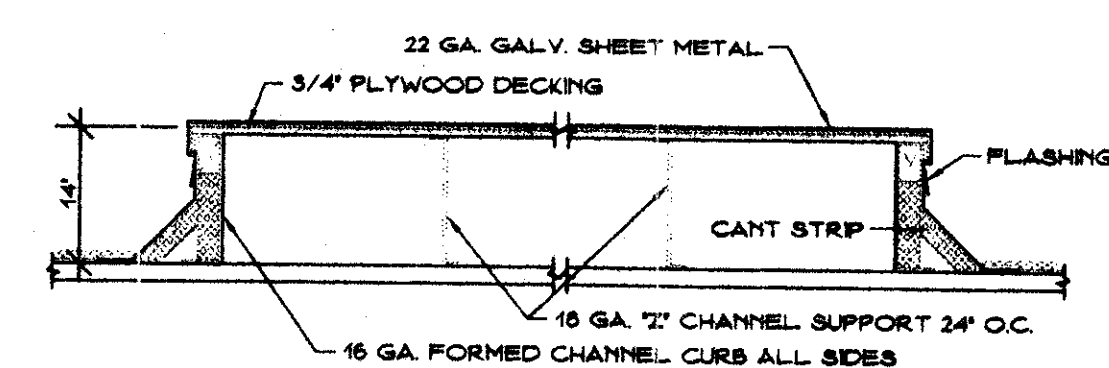
**FULL ELBOW TAKE-OFF DETAIL**  
NO SCALE



**SUSPENDED REFRIGERANT PIPE SUPPORT AT CEILING**  
NO SCALE



**POSITIVE PRESSURE P-TRAP DETAIL**  
NO SCALE



**CONDENSING UNIT MOUNTING PLATFORM**  
NO SCALE

EXHAUST FAN SCHEDULE								
MARK	CFM	SP	RPM	HP	DRIVE	ELEC. DATA	TYPE	EXAMPLE
EF #1-00	80	0.375	950	80 W	DIRECT	120 V, 1 $\phi$ , 60 HZ	CEILING	GREENHECK SP-70
EF #2-00	80	0.375	950	80 W	DIRECT	120 V, 1 $\phi$ , 60 HZ	CEILING	GREENHECK SP-70

Notes:  
1. Provide solid state speed controller for each fan.

FURNACE AND COIL SCHEDULE											
MARK	CFM	FAN DATA				COOLING DATA			HEATING		EXAMPLE (CARRIER)
		O.A. CFM	ESP	HP	ELECTRICAL DATA	SENS	TOTAL	EAT(DB/WB)	INPUT	OUTPUT	
FC #1-00	2000	200	0.6	3/4	115 V, 1 $\phi$ , 60 HZ	42.2	52.0	76.0F/63.0F	120.0	113.0	FURNACE / COIL
FC #2-00	1500	160	0.6	3/4	115 V, 1 $\phi$ , 60 HZ	30.2	38.0	76.0F/63.0F	80.0	74.0	58MXA-080-20 / CK3BXA060
FC #3-00	2000	260	0.6	3/4	115 V, 1 $\phi$ , 60 HZ	42.2	52.0	76.0F/63.0F	120.0	113.0	58MXA-120-20 / CK3BXA060
FC #3-00	2000	220	0.6	3/4	115 V, 1 $\phi$ , 60 HZ	42.2	52.0	76.0F/63.0F	120.0	113.0	58MXA-120-20 / CK3BXA060

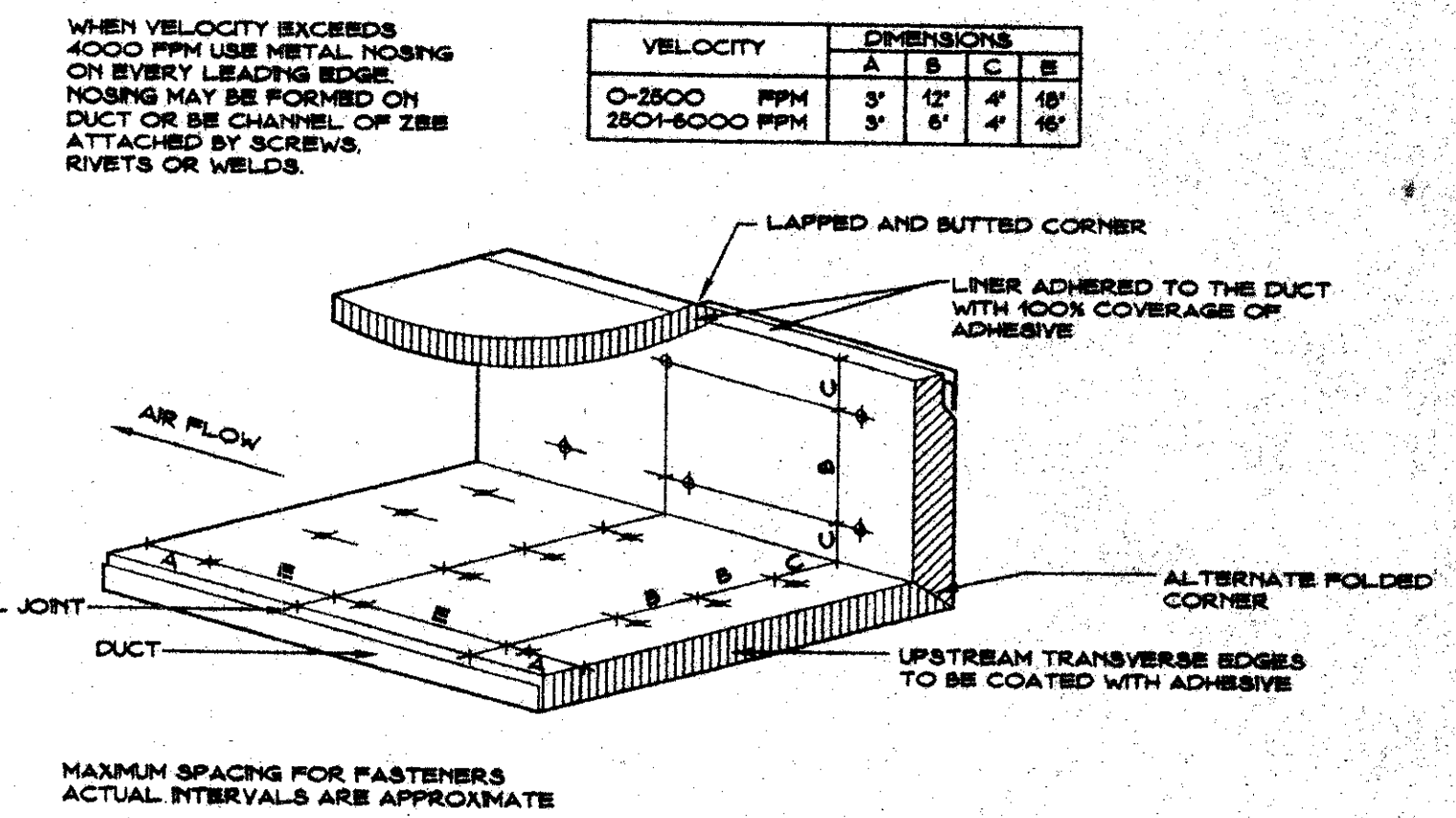
Notes:  
1. All selections based on jobsite elevation.  
2. Cooling coil velocity 500 fpm or less.  
3. Sensible and total capacities are expressed in MBTUH.  
4. Heating output and input are expressed in MBTUH.

CONDENSING UNIT SCHEDULE						
MARK	SERVES	CAPACITY - MBH	SEER	ELECTRIC DATA	EXAMPLE (CARRIER)	
CU #1-00	FC #1-00	52.0	12.0	208 V, 3 $\phi$ , 60 HZ	38BRC060	
CU #2-00	FC #2-00	38.0	12.0	208 V, 3 $\phi$ , 60 HZ	38BRC042	
CU #3-00	FC #3-00	52.0	12.0	208 V, 3 $\phi$ , 60 HZ	38BRC060	
CU #4-00	FC #4-00	52.0	12.0	208 V, 3 $\phi$ , 60 HZ	38BRC060	

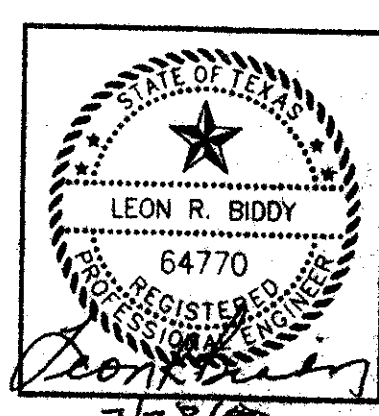
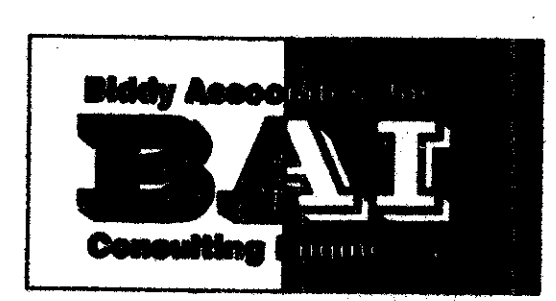
Notes:  
1. All selections based on jobsite elevation.  
2. All selections based on ambient temperature of 100°F.  
3. Submit performance data with matched coil.

AIR DISTRIBUTION SCHEDULE						
MARK	TYPE	LOCATION	FRAME	FINISH	EXAMPLE	
S-1	SUPPLY	CEILING	TB	WHITE	TITUS TMSA 24x24, OBD	
S-2	SUPPLY	CEILING	TB	WHITE	TITUS T-SLOT-IN, 48" LONG, 3 SLOTS, OBD	
S-3	SUPPLY	CEILING	PF	WHITE	TITUS 300RS, OBD, NOTE 6	
S-4	SUPPLY	CEILING	PF	WHITE	TITUS MCD, OBD, NOTE 6	
R-1	RETURN	CEILING	TB	WHITE	TITUS PAR, 24x24, NOTE 6	
R-2	RETURN	CEILING	PF	WHITE	TITUS 355ZRL, NOTE 6	

Notes:  
1. OBD = Opposed blade damper  
2. EXT = Extractor  
3. PF = Plaster Frame  
4. TB = Lay-in T-bar  
5. Verify frame type with ceiling installer's layout.  
6. Provide square to round transition at diffuser. See drawings for size.



**DUCT LINER FASTENER SPACING DETAIL**  
NO SCALE



**R-F**  
ROGERS - FORD  
ARCHITECTURE - INTERIOR DESIGN  
2616 THOMAS AVENUE  
DALLAS, TEXAS 75288  
TELEPHONE (214) 871-9388  
FAX (214) 871-3155

LONE STAR BANK  
Beltwood Parkway East  
at Beltline Road  
Addison, TX  
Project # 1804

7-85-2000 Issue for Revit  
7-28-2000 Rev. 11/2000 Rev. 11/2000  
8-17-2000 2nd ISSUE FOR REVIT  
12-5-2000 CONST. ISSUE

M1.02