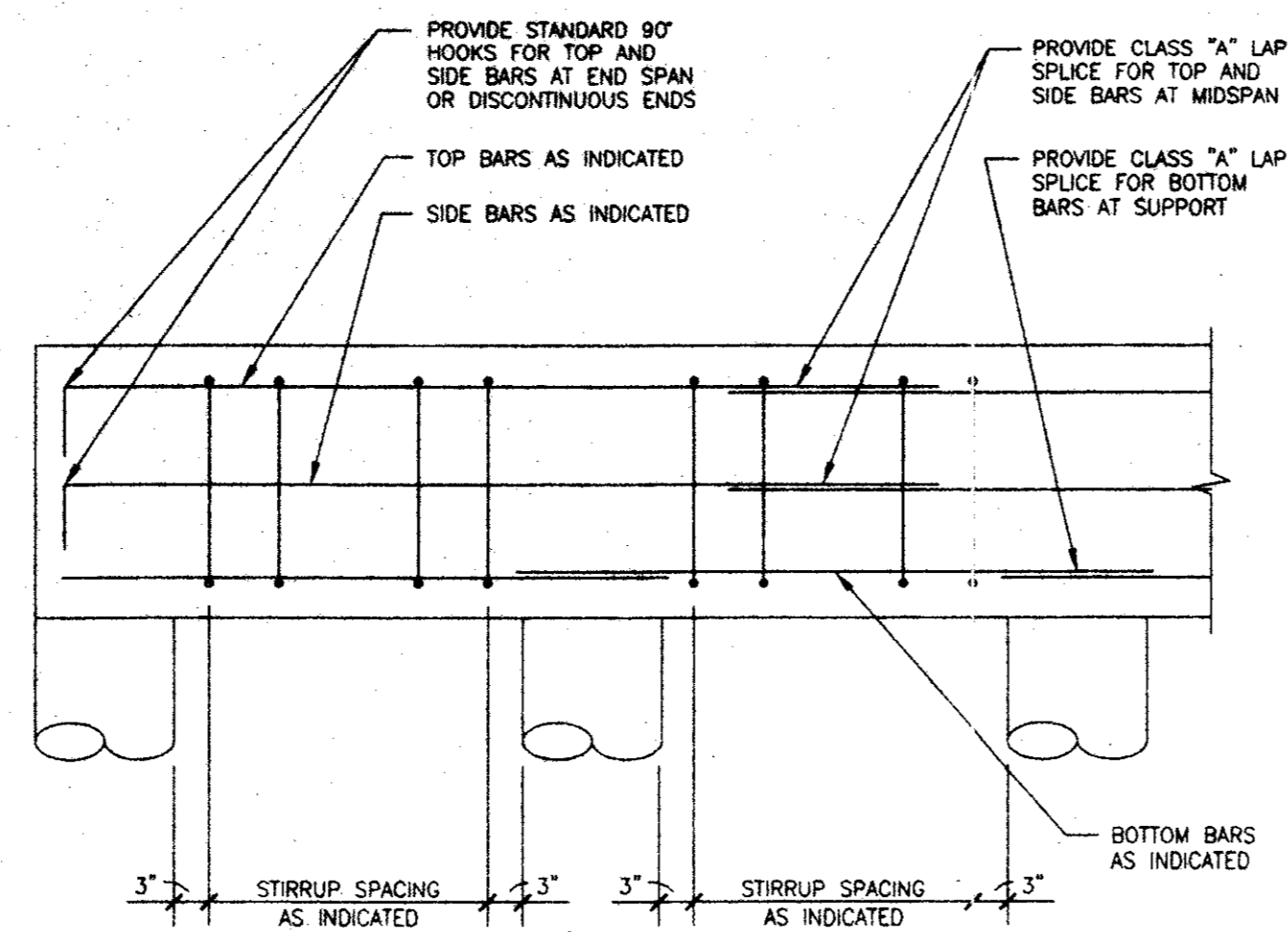
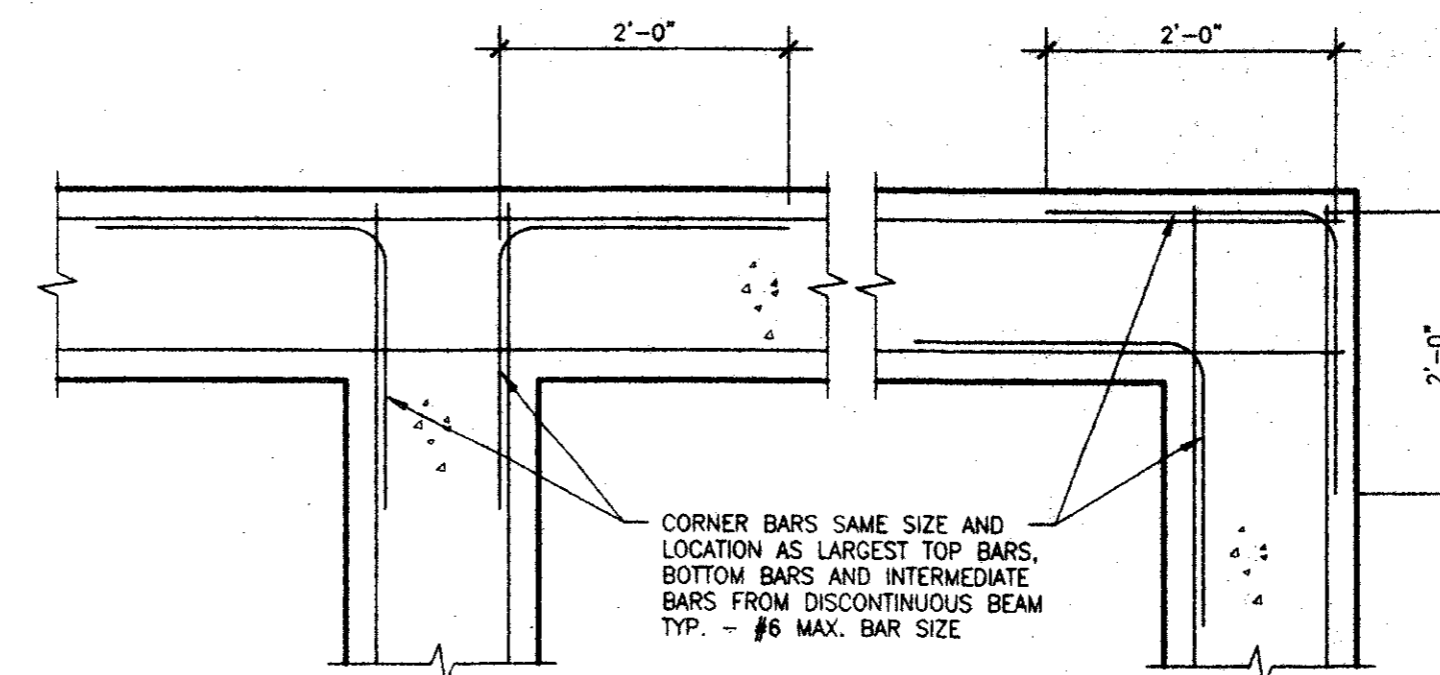


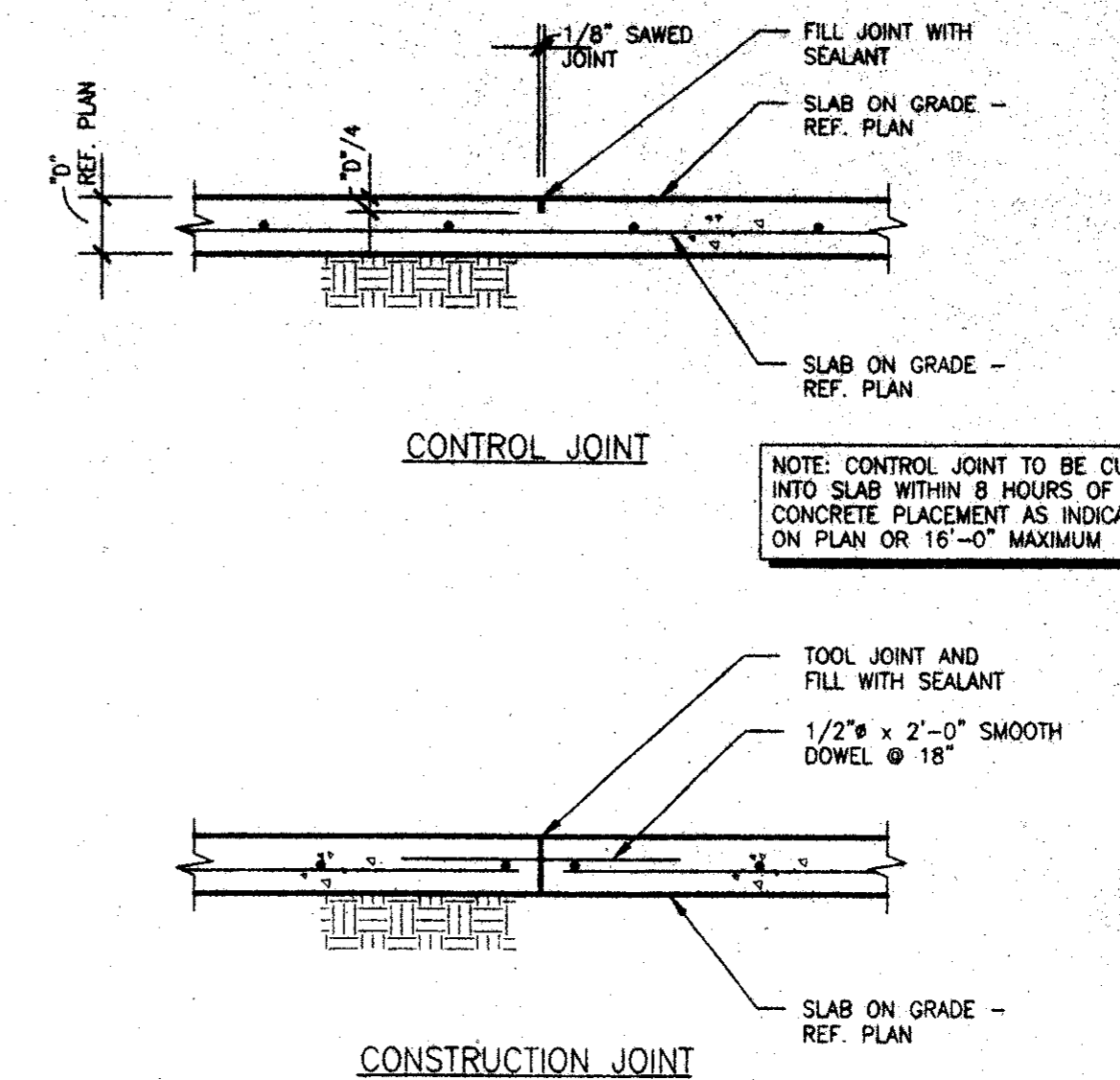
1 TYPICAL DRILLED PIER DETAIL
NO SCALE



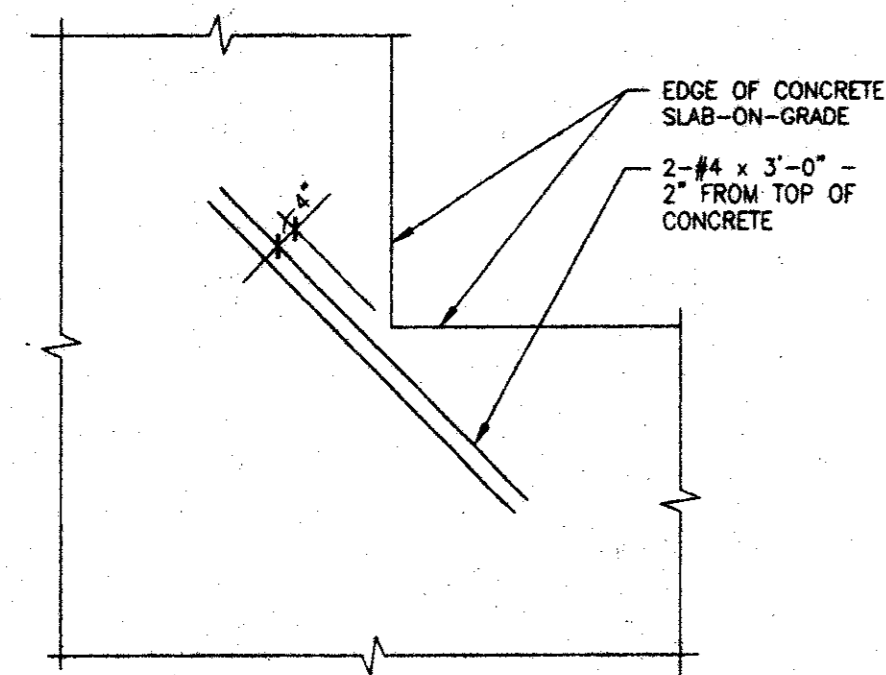
2 TYPICAL UNSCHEDULED CONCRETE BEAM REINFORCEMENT DETAIL
NO SCALE



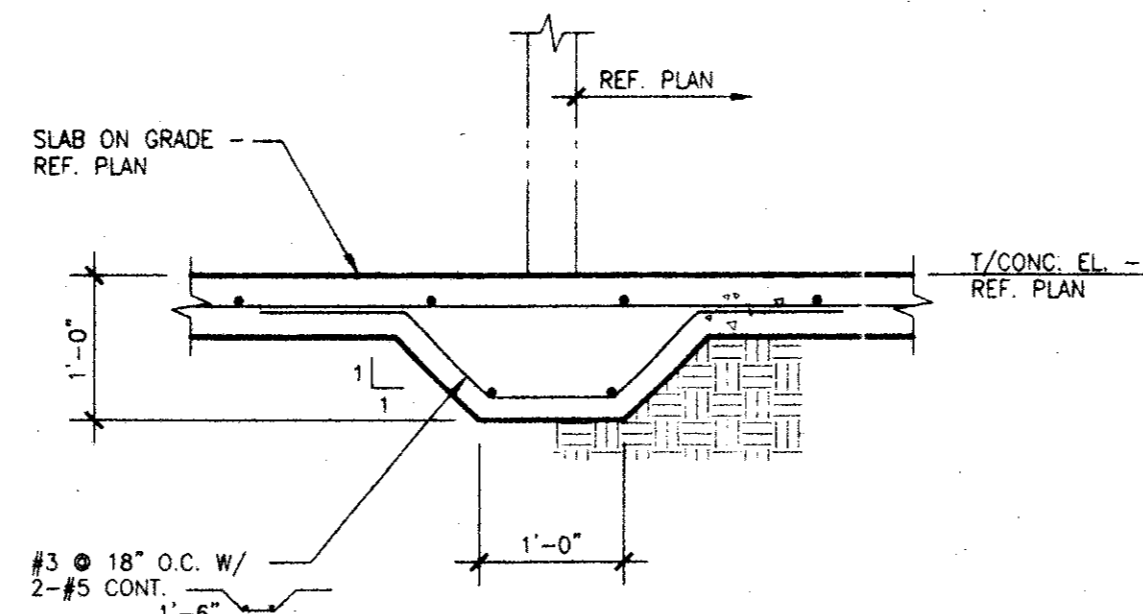
3 TYPICAL CORNER BARS AT WALL, BEAM AND FOOTING INTERSECTION DETAIL
NO SCALE



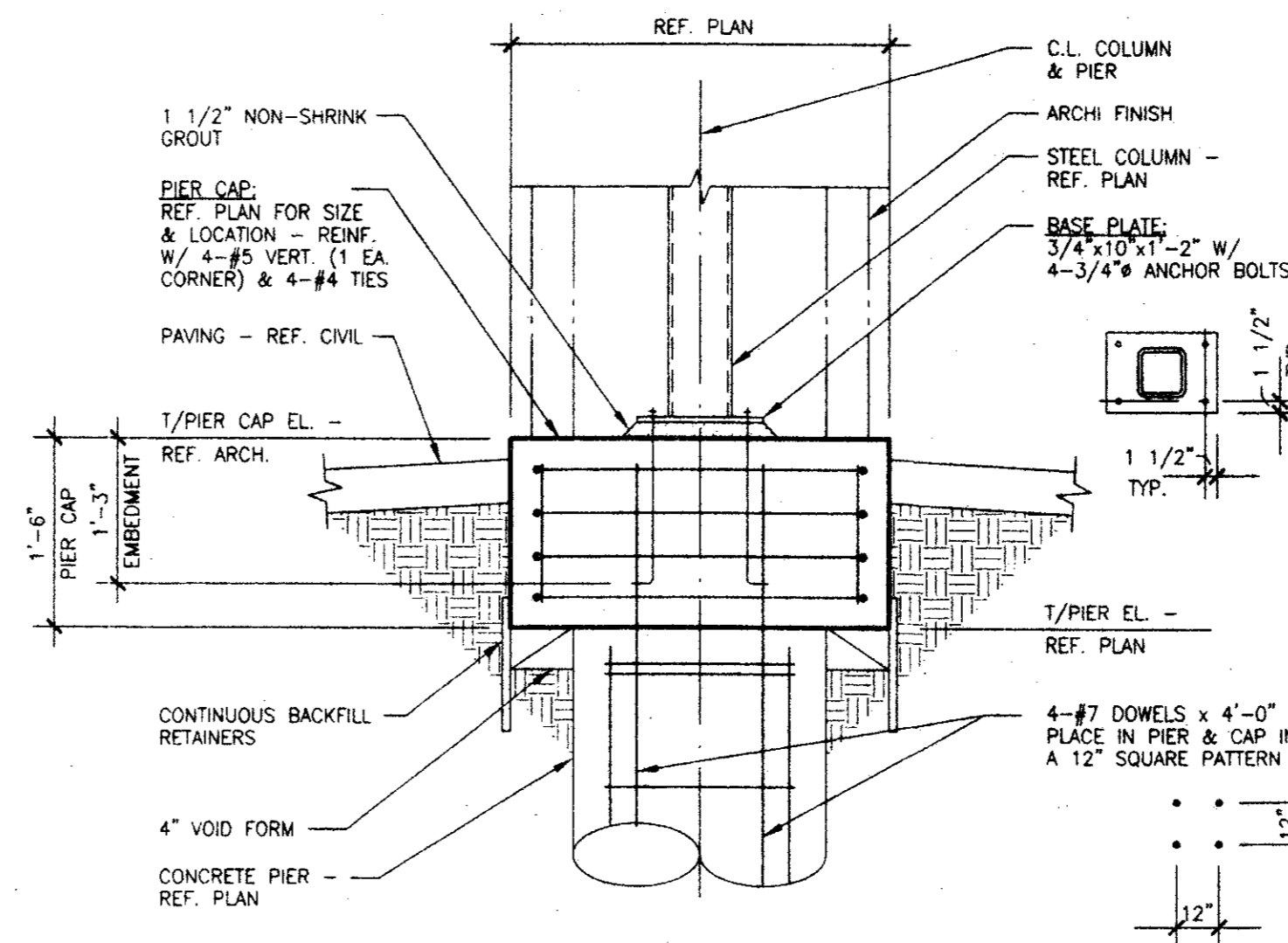
4 TYPICAL JOINTS IN SLAB-ON-GRADE DETAIL
NO SCALE



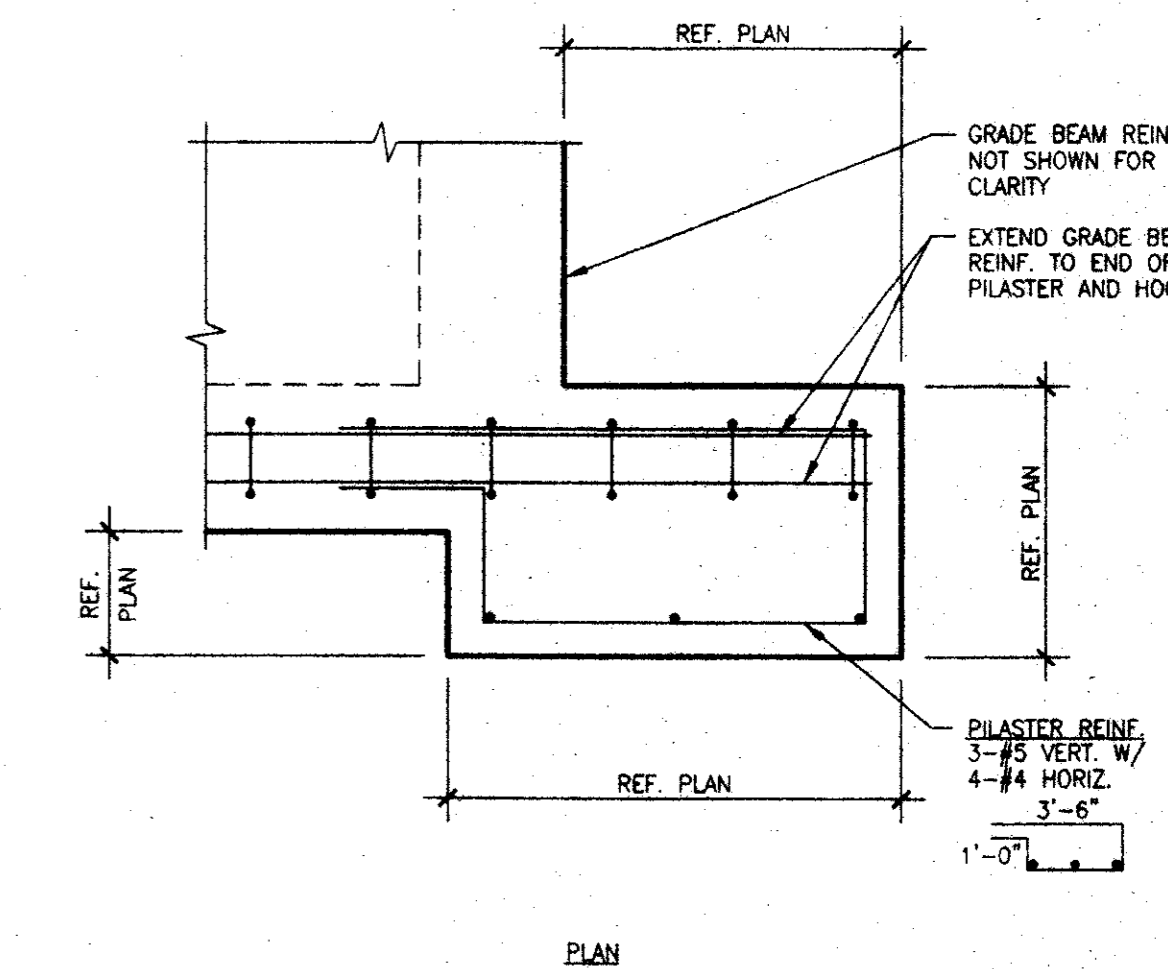
5 TYPICAL RE-ENTRANT SLAB CORNER REINFORCING DETAIL
NO SCALE



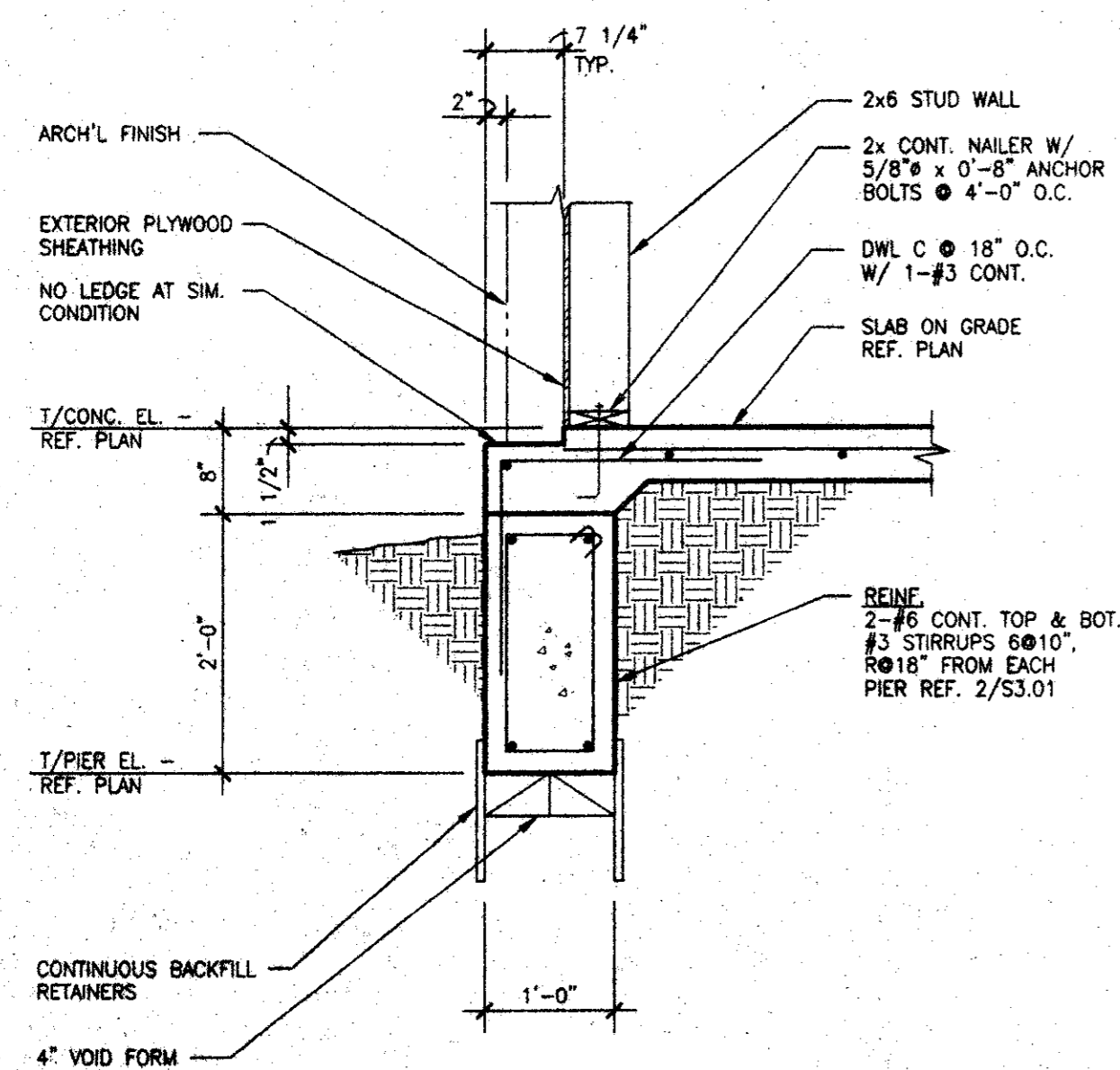
6 SECTION
NO SCALE



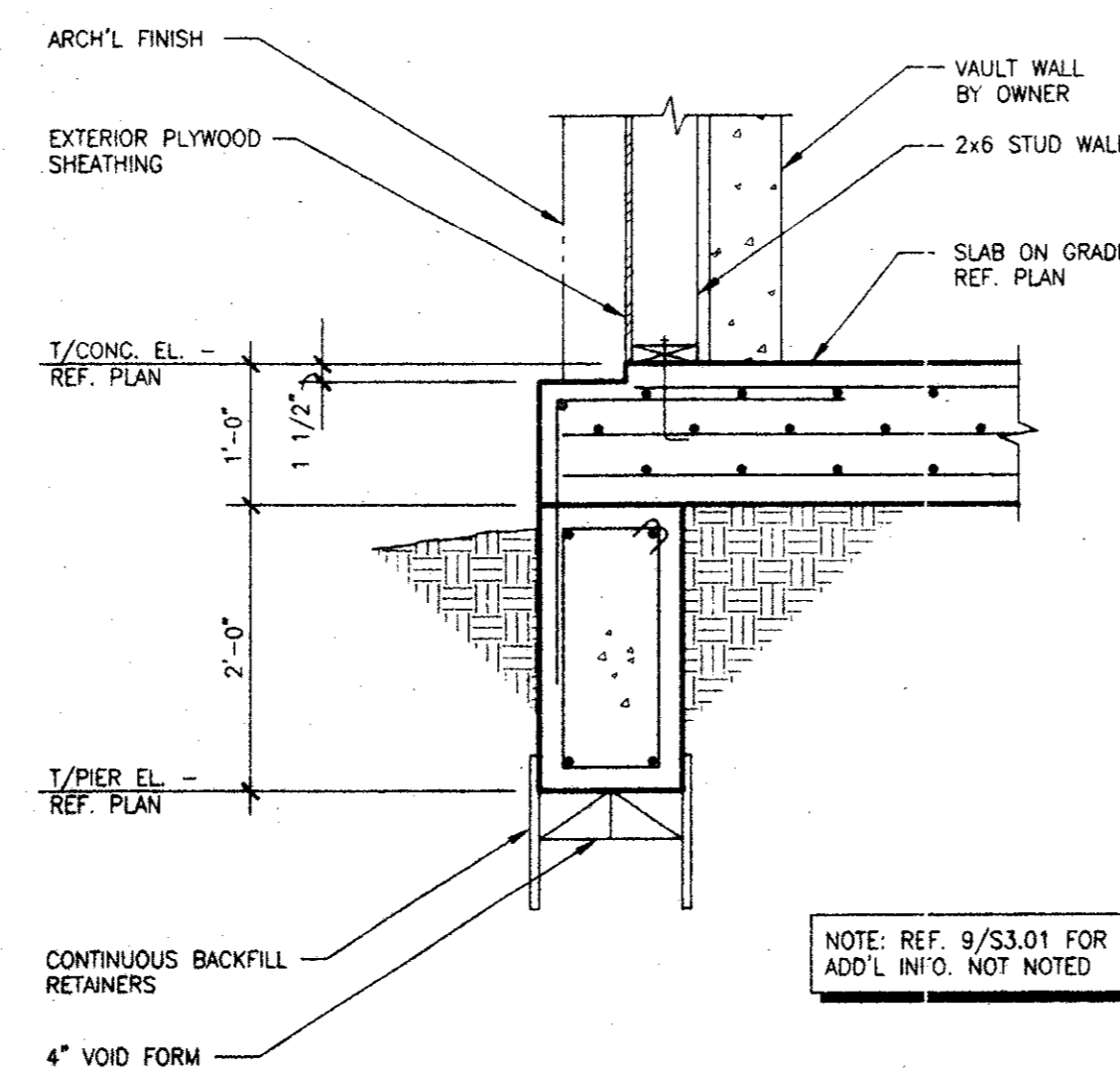
7 DETAIL
NO SCALE



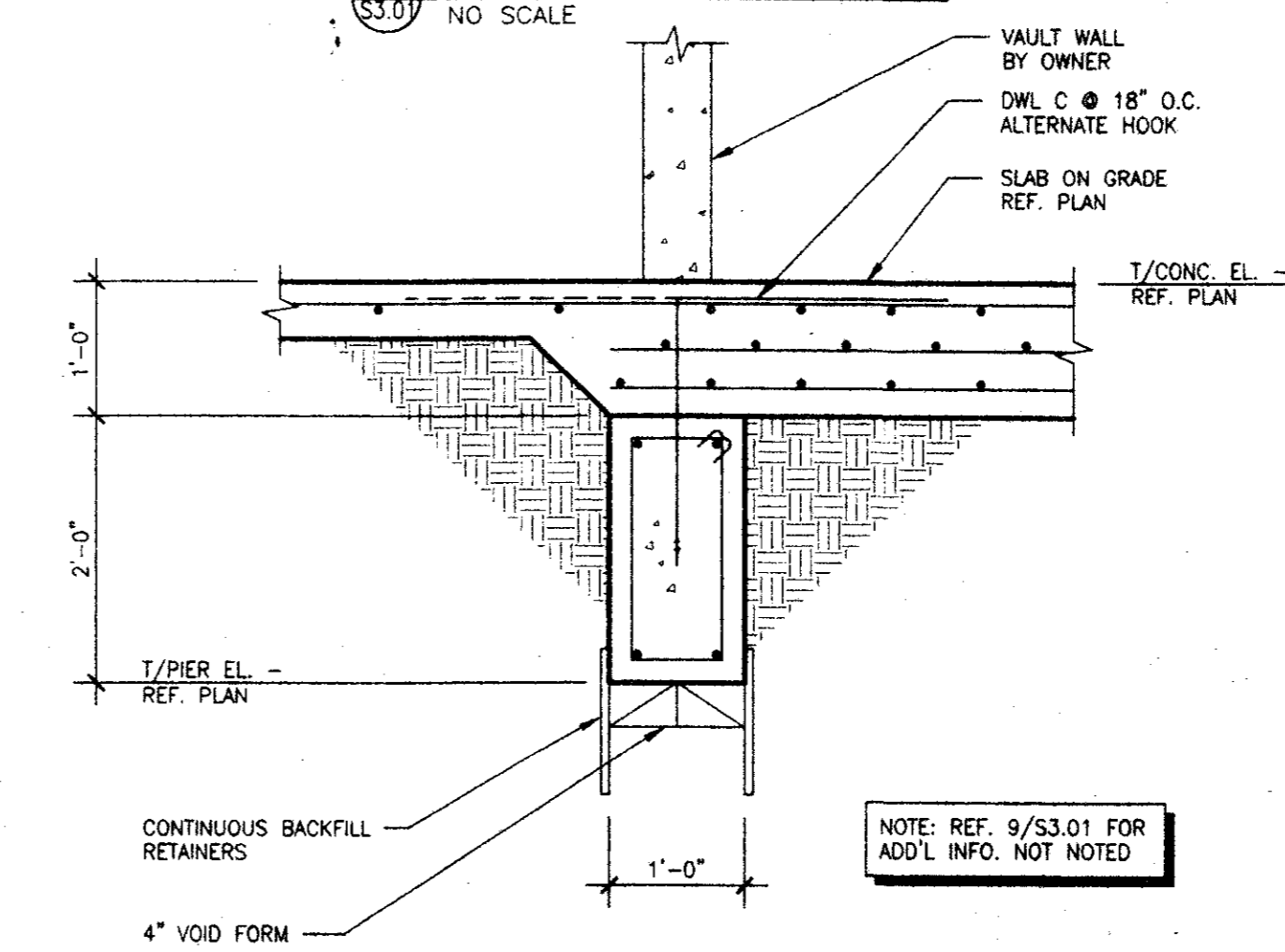
8 DETAIL
NO SCALE



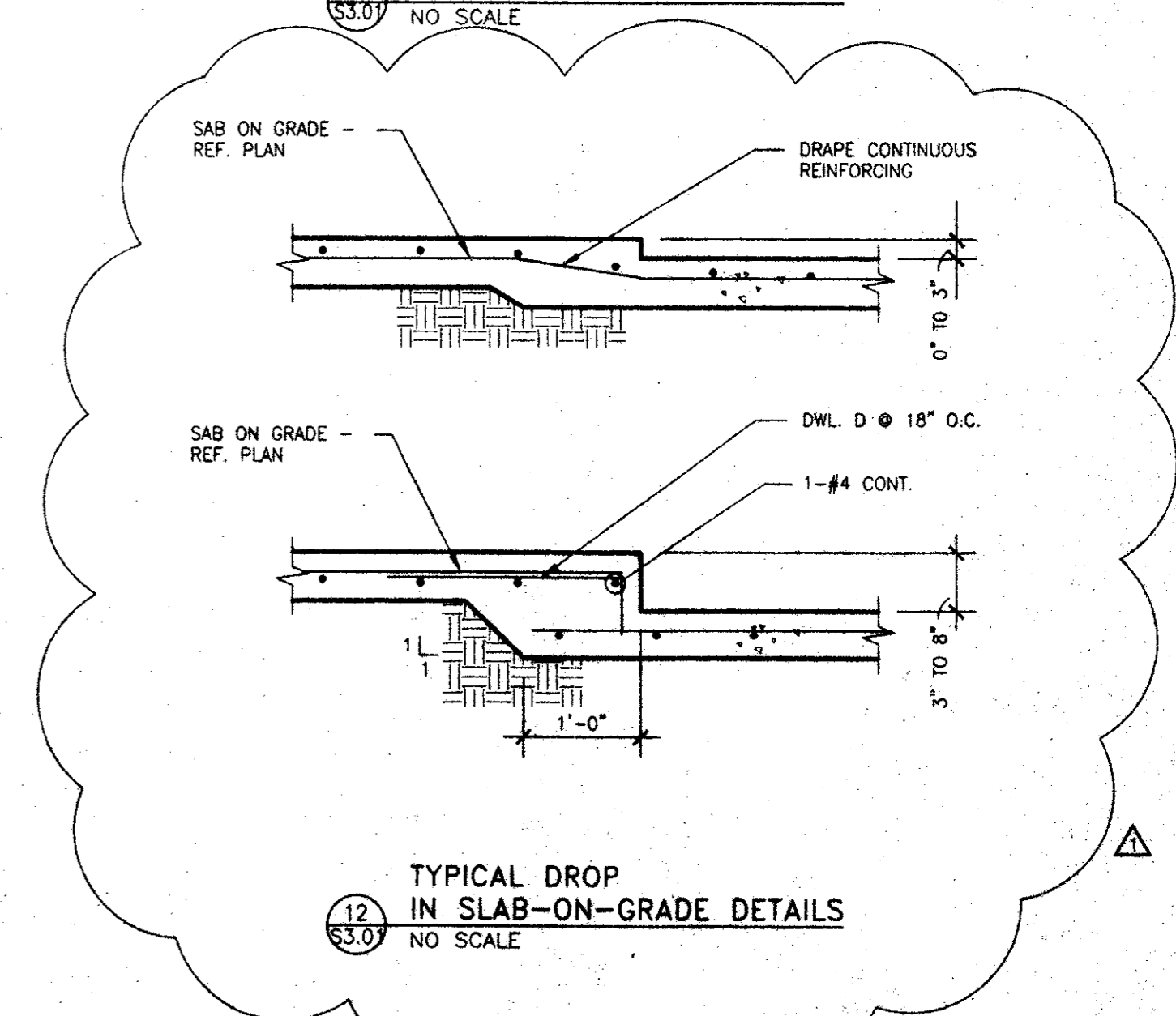
9 SECTION
NO SCALE



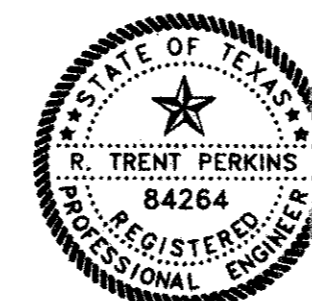
10 SECTION
NO SCALE



11 SECTION
NO SCALE



12 TYPICAL DROP IN SLAB-ON-GRADE DETAILS
NO SCALE



THE SEAL APPEARING ON THIS DOCUMENT WAS AUTHORIZED BY R. TRENT PERKINS, P.E. 84266 ON 27 JULY 00

P P O
Parkin • Perkins • Olsen
Consulting Engineering, Inc.
12970 Pandora Drive Suite 200
Dallas, Texas 75238
Tel 214.221.2220 Fax 214.221.2252
Project No. 38018

R-F
ROGERS • FORD
ARCHITECTURE - INTERIOR DESIGN
2616 THOMAS AVENUE
DALLAS, TEXAS 75204
TELEPHONE (214) 871-9388
FAX (214) 871-3155

LONE STAR BANK
4650 Beltline Road
Addison, TX
Project # 1804

7-27-2000 PERMIT ISSUE
8-17-2000 ISSUE FOR BID
8-25-2000 ADDENDUM #1
12-5-2000 CORRECT. ISSUE

S3.01

FILE INFO: 80168301.dwg 1=16 10/31/00 14:01