

LEGEND

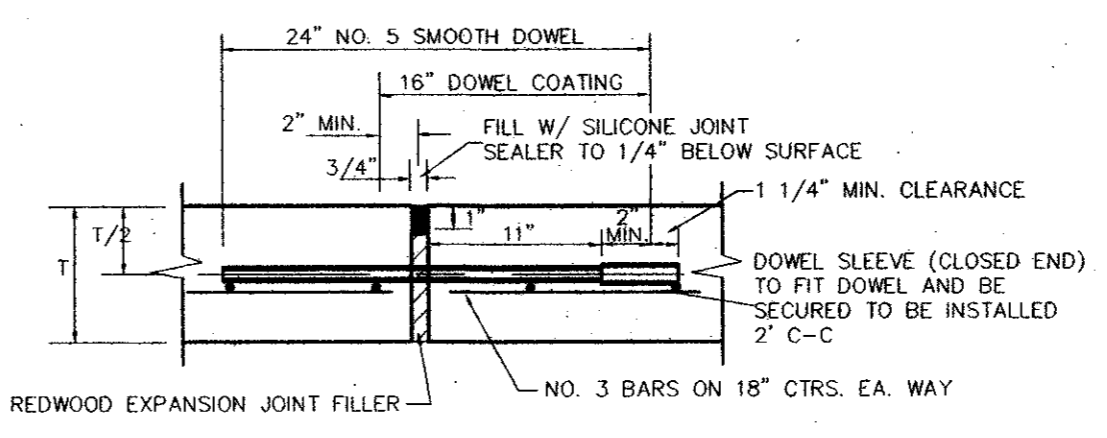
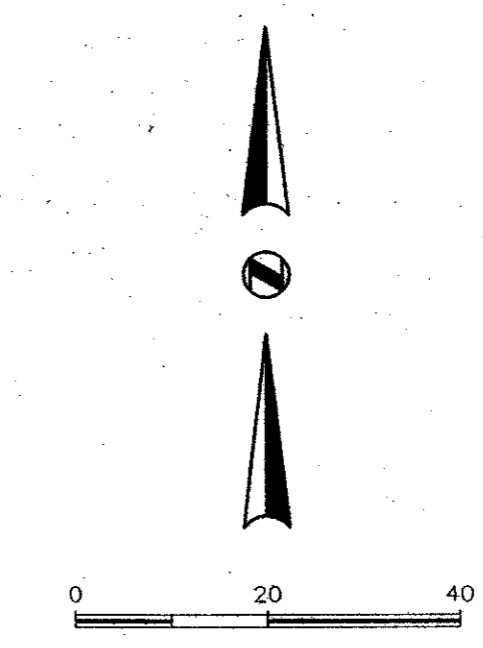
- EXISTING CURB
- PROPOSED CURB
- SAWCUT
- PROPOSED 5" PAVEMENT
5" 3500 PSI
CONCRETE REINFORCED W/ #3 BARS
@ 18" O.C.E.W.
(PARKING AREAS)
- ▨ PROPOSED 6" PAVEMENT
6" 3500 PSI
CONCRETE REINFORCED W/ #3 BARS
@ 18" O.C.E.W.
(FIRE LANE & DRIVE APPROACHES)
- ▩ PROPOSED 8" PAVEMENT
8" 3600 PSI
CONCRETE REINFORCED W/ #3 BARS
@ 18" O.C.E.W.
(R.O.W. APPROACHES)
- ▧ PROPOSED 4" PAVEMENT
4" 3000 PSI
CONCRETE REINFORCED W/ #3 BARS
@ 24" O.C.E.W.
(CITY SIDEWALK)

GENERAL NOTES

1. ALL MATERIALS AND CONSTRUCTION SHALL CONFORM TO THE TOWN OF ADDISON'S STANDARDS AND SPECIFICATIONS.
2. IT WILL BE THE RESPONSIBILITY OF THE CONTRACTOR TO PROTECT ALL PUBLIC UTILITIES IN THE CONSTRUCTION OF THIS PROJECT. ALL MANHOLES, CLEAN-OUTS, VALVE BOXES, FIRE HYDRANTS, ETC. MUST BE ADJUSTED TO PROPER LINE AND GRADE BY THE CONTRACTOR PRIOR TO AND AFTER THE PLACING OF PERMANENT PAVING. UTILITIES MUST BE MAINTAINED TO PROPER LINE AND GRADE DURING CONSTRUCTION OF THIS PROJECT.
3. THE CONTRACTOR WILL BE RESPONSIBLE FOR COORDINATING WITH ALL THE APPROPRIATE UTILITY COMPANIES FOR THE LOCATION OF ALL UTILITIES WITHIN THE CONSTRUCTION AREA.
4. THE PAVING CONTRACTOR SHALL COORDINATE WITH THE UTILITY CONTRACTOR TO INSURE ALL SLEEVING FOR IRRIGATION HAS BEEN INSTALLED PRIOR TO PLACEMENT OF PERMANENT PAVEMENT.
5. ALL PAVING AND EARTHWORK OPERATIONS SHALL CONFORM TO THE RECOMMENDATIONS IN THE GEOTECHNICAL INVESTIGATION REPORT.
6. ALL DIMENSIONS ARE TO FACE OF CURB UNLESS OTHERWISE NOTED.
7. ALL CURB RETURN RADII ARE 2' UNLESS OTHERWISE NOTED.
8. ALL CONSTRUCTION DEBRIS SHALL BE LEGALLY DISPOSED OF OFFSITE.
9. AREAS OF CONSTRUCTION SHALL BE PROPERLY BARRICADED FOR THE PROTECTION OF THE PUBLIC.

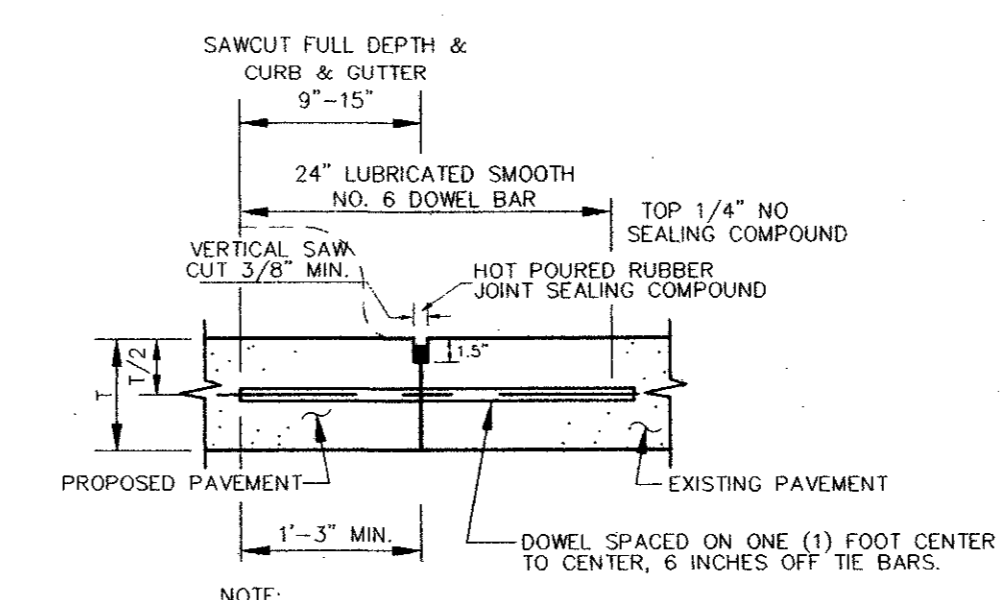
CAUTION!!!
GTE BURIED CABLE IN THIS AREA.
CONTACT GTE 48 HOURS PRIOR
TO CONSTRUCTION.

!! CAUTION !!
EXISTING GAS MAIN IN AREA
CONTACT ONE STAR GAS 48 HOURS
PRIOR TO CONSTRUCTION



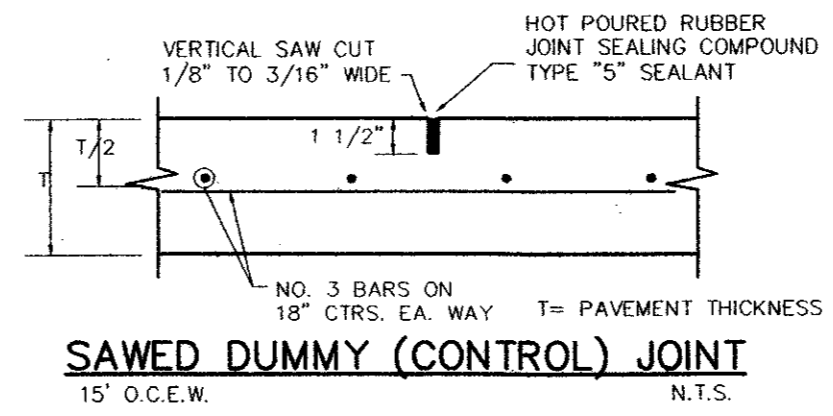
EXPANSION JOINT

60" O.C.E.W. N.T.S.
NOTE: DOWELS AND REINFORCING BARS SHALL BE SUPPORTED BY AN APPROVED DEVICE.



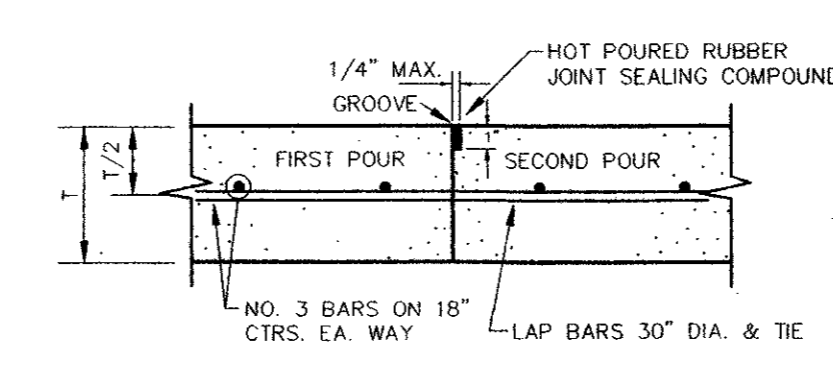
LONGITUDINAL BUTT JOINT

N.T.S.
NOTE:
1. NO. 5 SMOOTH DOWEL BAR MAY BE USED IN 5 INCH AND 6 INCH PAVEMENT THICKNESS.
2. LONGITUDINAL BUTT CONSTRUCTION MAY BE UTILIZED IN PLACE OF LONGITUDINAL HINGED (KEYWAY) JOINT AT CONTRACTOR'S OPTION.
3. DOWEL BARS SHALL BE DRILLED INTO PAVEMENT HORIZONTALLY BY USE OF A MECHANICAL RIG.
4. DRILLED BY HAND IS NOT ACCEPTABLE. PUSHING DOWEL BARS INTO GREEN CONCRETE NOT ACCEPTABLE.



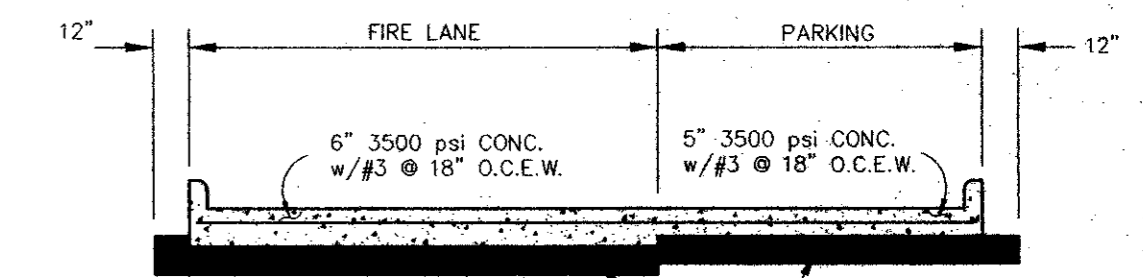
SAWED DUMMY (CONTROL) JOINT

15" O.C.E.W. N.T.S.



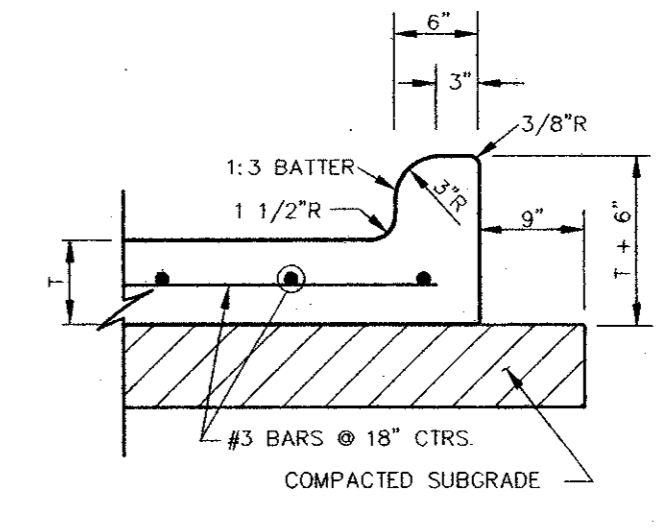
CONSTRUCTION JOINT

N.T.S.



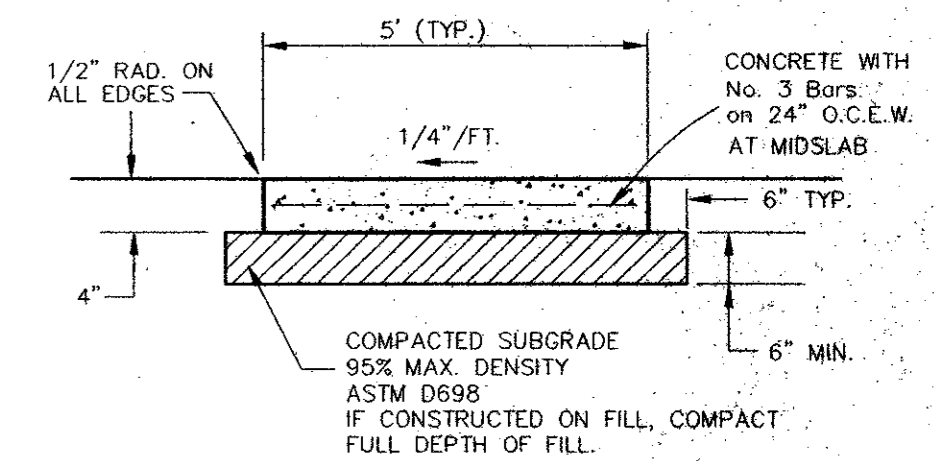
TYPICAL PAVING SECTION

N.T.S.



TYPICAL PAVEMENT SECTION

N.T.S.



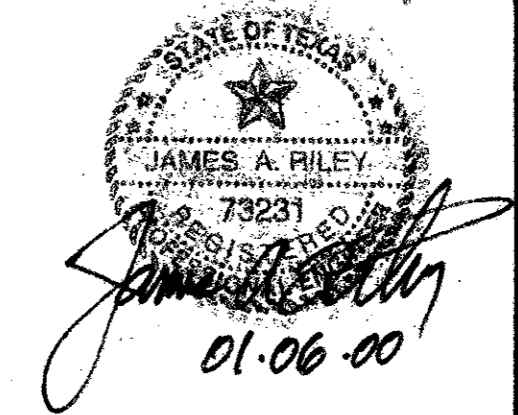
TYPICAL SIDEWALK SECTION

N.T.S.

PAVING PLAN

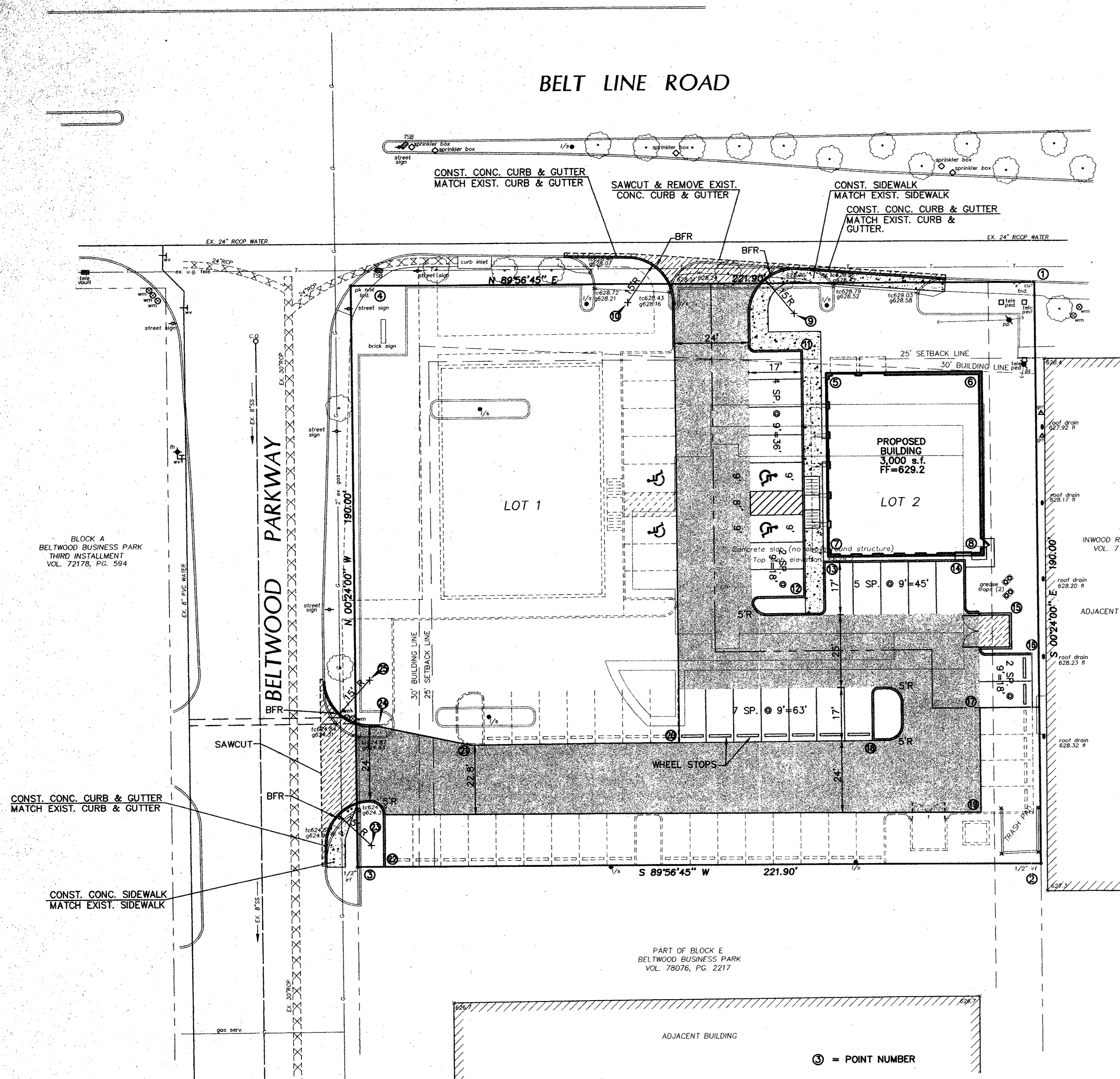
THE PRINT PLACE
TOWN OF ADDISON
DALLAS COUNTY, TEXAS

BROCKETTE • DAVIS • DRAKE, INC.
consulting engineers
Civil & Structural Engineering • Surveying
4144 North Central Expressway, Suite 1100 • Dallas, Texas 75204
(214) 824-3647 • fax (214) 824-7064



DESIGN	DRAWN	DATE	SCALE	NOTES	FILE	NO.
JAR	FG	01/00	1"=20'	BDD	C99356	C4

BELT LINE ROAD



CONTROL COORDINATES			CONTROL COORDINATES		
PNT	NORTHING	EASTING	PNT	NORTHING	EASTING
1	5087.2082	5078.7402	14	4996.0292	5055.3458
2	4897.2128	5080.0666	15	4978.4620	5070.0834
3	4897.0031	4858.1667	16	4965.1705	5077.3118
4	5086.9984	4856.8403	17	4948.0522	5060.4309
5	5057.7058	5010.9142	18	4937.8192	5025.4663
6	5058.0593	5061.5484	19	4914.0531	5060.6683
7	4997.6864	5011.3332	20	4937.3814	4962.7530
8	4998.0399	5061.9674	21	4936.9117	4895.4695
9	5000.7782	5077.1479	22	4897.0116	4867.1514
10	4946.7498	5081.0315	23	4904.0074	4862.7230
11	5064.6645	5002.8654	24	4943.0099	4865.9960
12	4984.6665	5003.4239	25	4958.0070	4862.2985
13	4995.7151	5010.3469			

⊙ = POINT NUMBER

BLOCK A
BELTWOOD BUSINESS PARK
THIRD INSTALLMENT
VOL. 72178, PG. 594

PART OF BLOCK E
BELTWOOD BUSINESS PARK
VOL. 78076, PG. 2217

ADJACENT BUILDING